

T. 8 N., R. 52 W. 6th P.M.

FED. ROAD REGION	DMSION	PROJ. NO.	SHEET NO.	TOTAL SHEETS
VIII	COLORADO	NH 0762-038		

REVISIONS	

RIGHT OF WAY
Sterling to Iliff

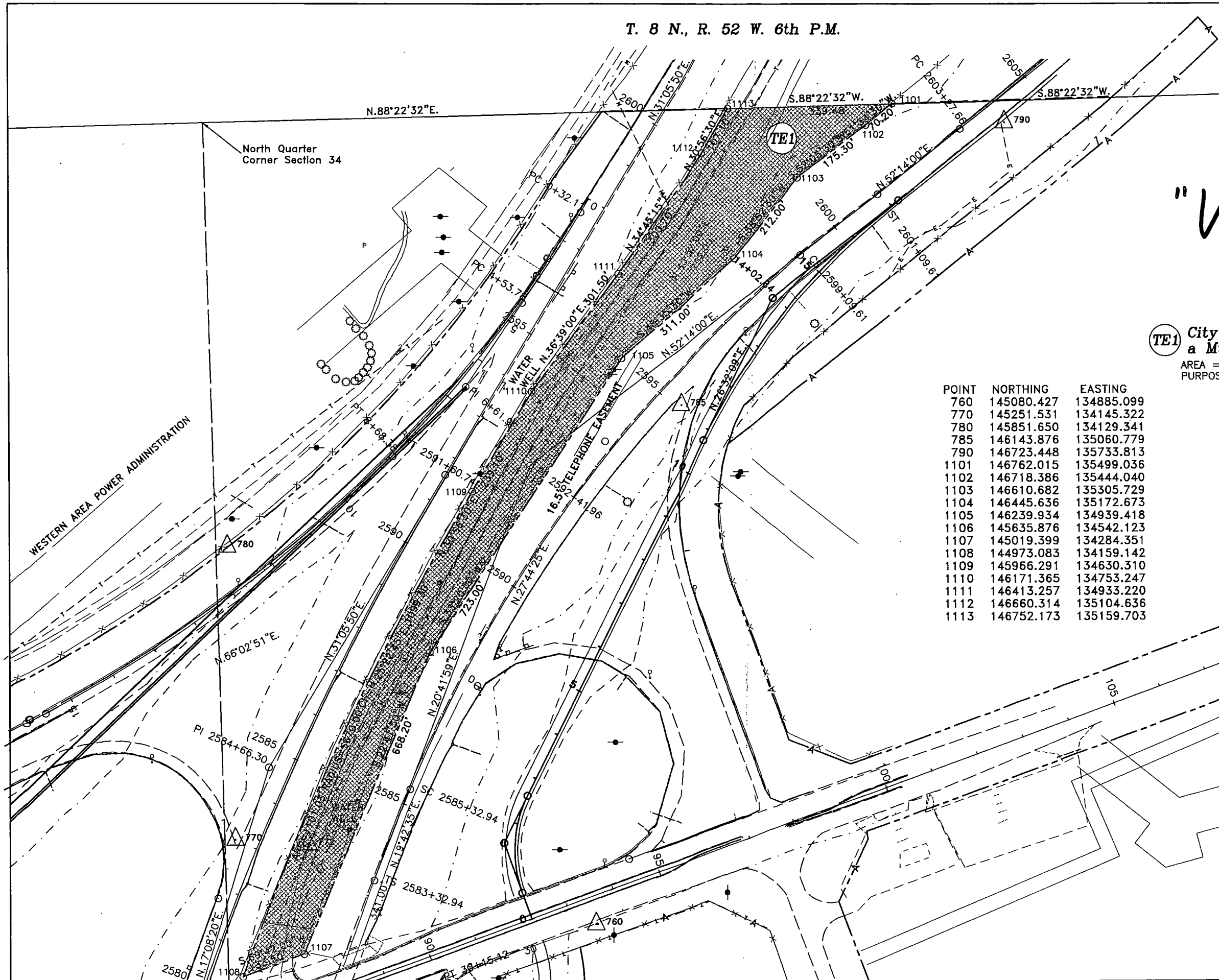
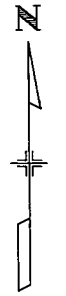
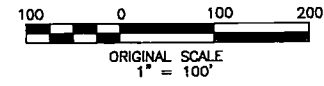
N.E. Cor.
Section 34

"V-File"

TE1 City of Sterling,
a Municipal Corporation

AREA = 5.955 ACRES
PURPOSE: FOR A DETOUR

POINT	NORTHING	EASTING
760	145080.427	134885.099
770	145251.531	134145.322
780	145851.650	134129.341
785	146143.876	135060.779
790	146723.448	135733.813
1101	146762.015	135499.036
1102	146718.386	135444.040
1103	146610.682	135305.729
1104	146445.636	135172.673
1105	146239.934	134939.418
1106	145635.876	134542.123
1107	145019.399	134284.351
1108	144973.083	134159.142
1109	145966.291	134630.310
1110	146171.365	134753.247
1111	146413.257	134933.220
1112	146660.314	135104.636
1113	146752.173	135159.703



T. 8 N., R. 52 W. 6th P.M.

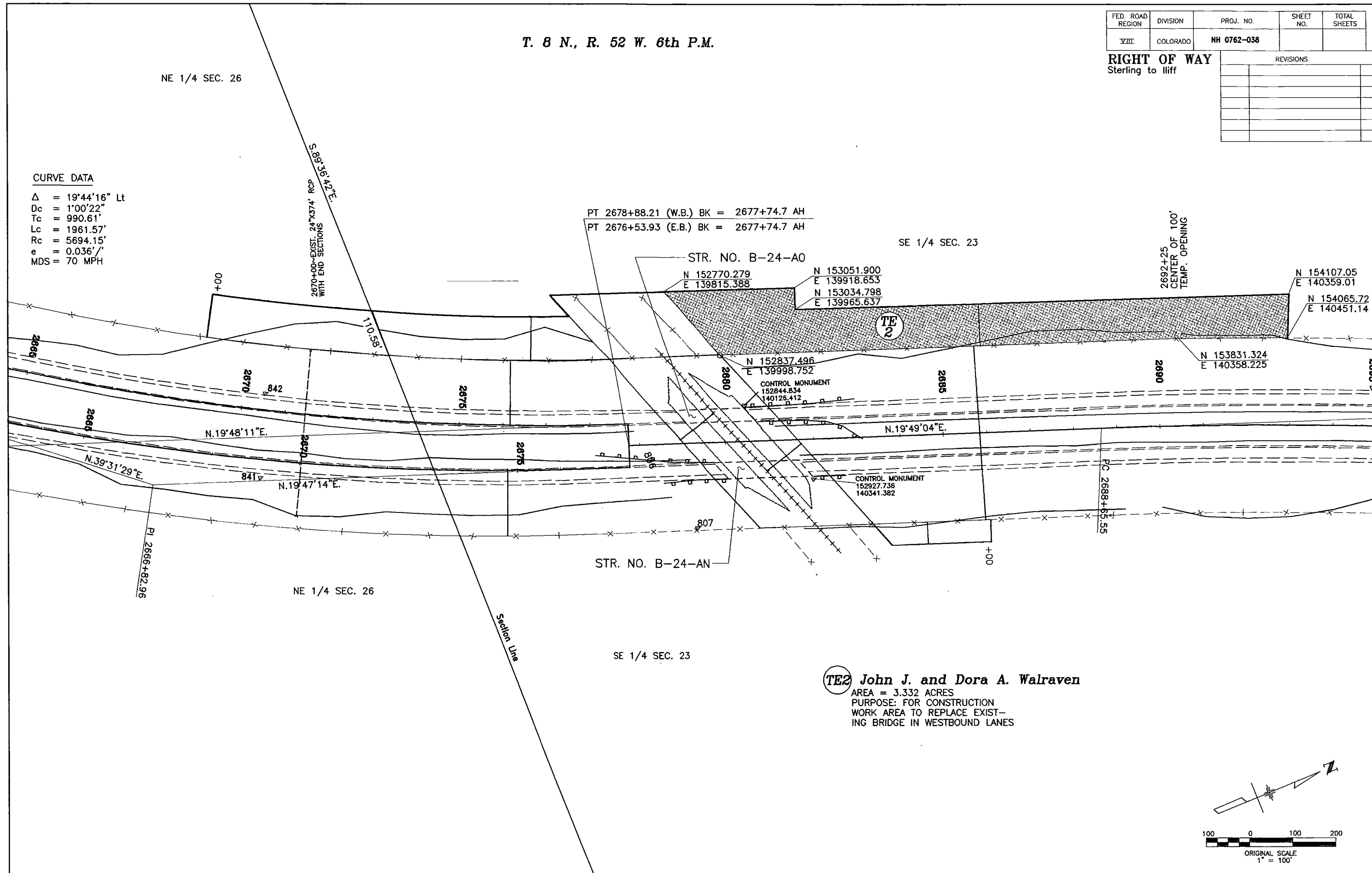
FED. ROAD REGION	DIVISION	PROJ. NO.	SHEET NO.	TOTAL SHEETS
VIII	COLORADO	NH 0762-038		

RIGHT OF WAY
Sterling to liiff

REVISIONS	

CURVE DATA

Δ = 19°44'16" Lt
 Dc = 1°00'22"
 Tc = 990.61'
 Lc = 1961.57'
 Rc = 5694.15'
 e = 0.036'/'
 MDS = 70 MPH



TE2 John J. and Dora A. Walraven
 AREA = 3.332 ACRES
 PURPOSE: FOR CONSTRUCTION
 WORK AREA TO REPLACE EXISTING BRIDGE IN WESTBOUND LANES

