

13497

CDOT Form #126Rev 7/00

COLORADO DEPARTMENT OF TRANSPORTATION



Region 5
Address: 3803 North Main Avenue, Suite 300
Durango, Colorado 81301
Phone: (970) 385-1400 FAX: (970) 385-1410

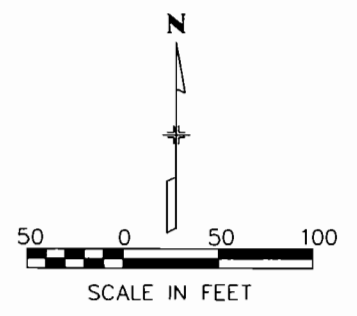
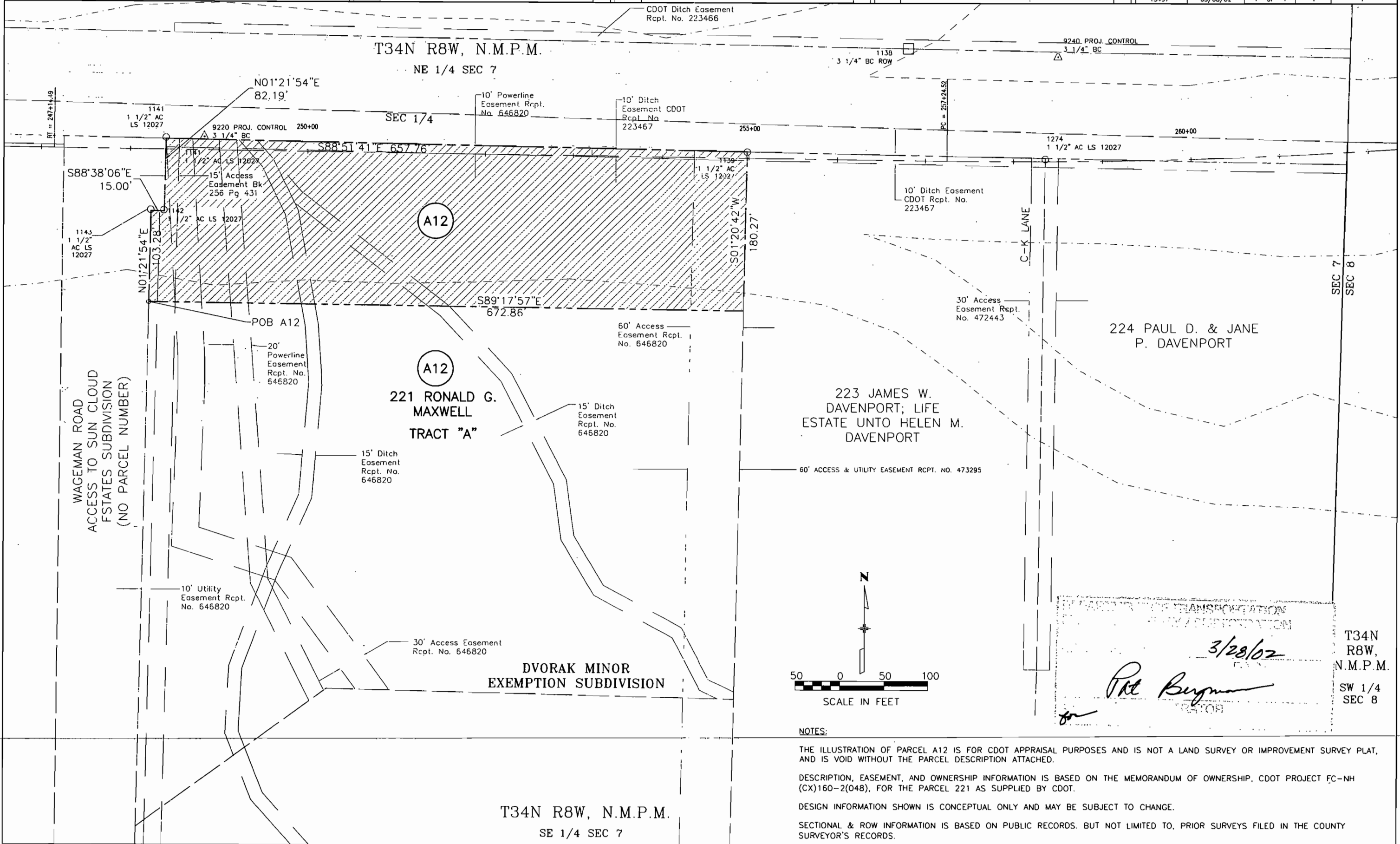
Right of Way Plans Unit:

Sheet Revisions	
mm/yy	xxxx

Sheet Revisions	
mm/yy	xxxx

Sheet Revisions	
mm/yy	xxxx

Right of Way Plans				
Ownership Map				
Project Number:	NH1602-082			
Project Location:	US HWY 160-2			
Project Location:	La Plata County			
Project Code:	Last Mod. Date:	Subset Sheets:	Sheet No.:	Total No. of Sheets:
13497	03/08/02	1 of 1	1	1

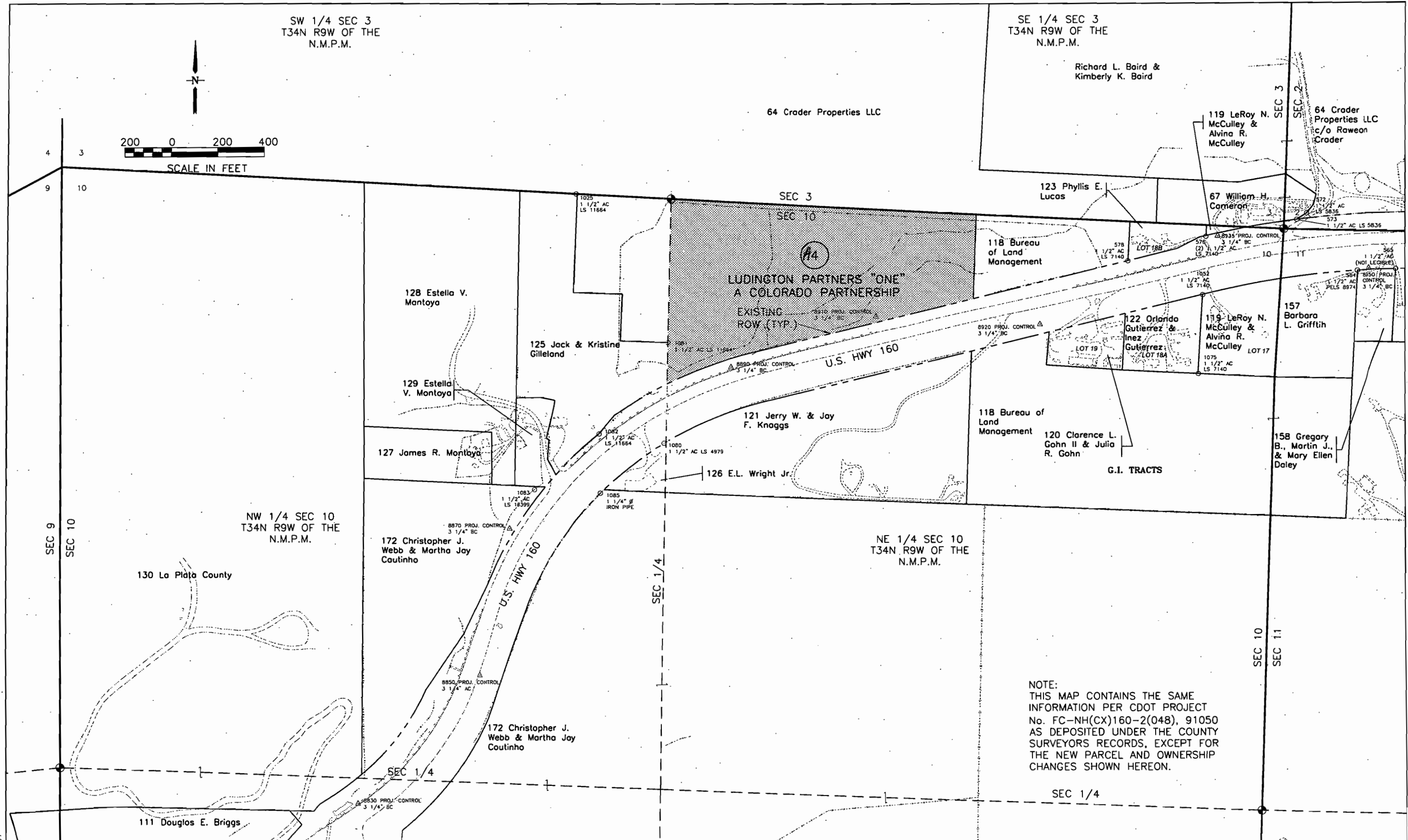


COLORADO DEPARTMENT OF TRANSPORTATION
 DIVISION OF HIGHWAY & CONSTRUCTION
 3/28/02
Pat Bergman
 DIRECTOR

T34N
 R8W,
 N.M.P.M.
 SW 1/4
 SEC 8

NOTES:
 THE ILLUSTRATION OF PARCEL A12 IS FOR CDOT APPRAISAL PURPOSES AND IS NOT A LAND SURVEY OR IMPROVEMENT SURVEY PLAT, AND IS VOID WITHOUT THE PARCEL DESCRIPTION ATTACHED.
 DESCRIPTION, EASEMENT, AND OWNERSHIP INFORMATION IS BASED ON THE MEMORANDUM OF OWNERSHIP, CDOT PROJECT EC-NH (CX)160-2(048), FOR THE PARCEL 221 AS SUPPLIED BY CDOT.
 DESIGN INFORMATION SHOWN IS CONCEPTUAL ONLY AND MAY BE SUBJECT TO CHANGE.
 SECTIONAL & ROW INFORMATION IS BASED ON PUBLIC RECORDS. BUT NOT LIMITED TO, PRIOR SURVEYS FILED IN THE COUNTY SURVEYOR'S RECORDS.

T34N R8W, N.M.P.M.
 SE 1/4 SEC 7



SW 1/4 SEC 3
T34N R9W OF THE
N.M.P.M.

SE 1/4 SEC 3
T34N R9W OF THE
N.M.P.M.

SCALE IN FEET

200 0 200 400


NOTE:
THIS MAP CONTAINS THE SAME
INFORMATION PER CDOT PROJECT
No. FC-NH(CX)160-2(048), 91050
AS DEPOSITED UNDER THE COUNTY
SURVEYORS RECORDS, EXCEPT FOR
THE NEW PARCEL AND OWNERSHIP
CHANGES SHOWN HEREON.

URS JOB#: 6742387

Computer File Information	
Creation Date: 9/14/00	Initials: RDP
Last Modification Date: 5/8/01	Initials: RDP
Full Path: \6742387\CAD\ROW\PLANS\	
Drawing File Name: P124_OWNERSHIP.DWG	
Acad Ver: R14	Scale: 1" = 400' Units: ENGLISH

Sheet Revisions	
(R-)	
(R-)	
(R-)	
(R-)	

Colorado Department of Transportation



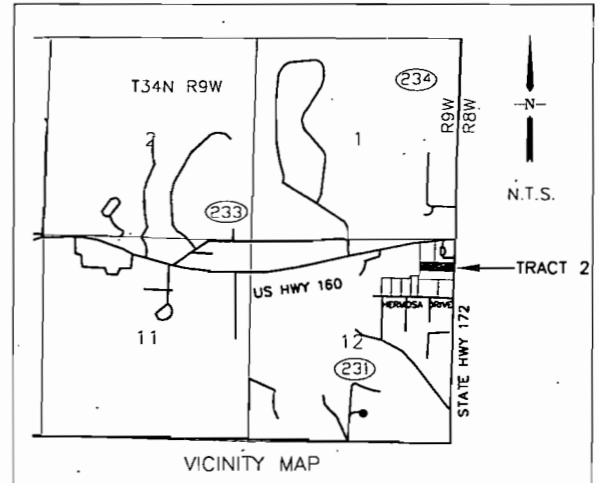
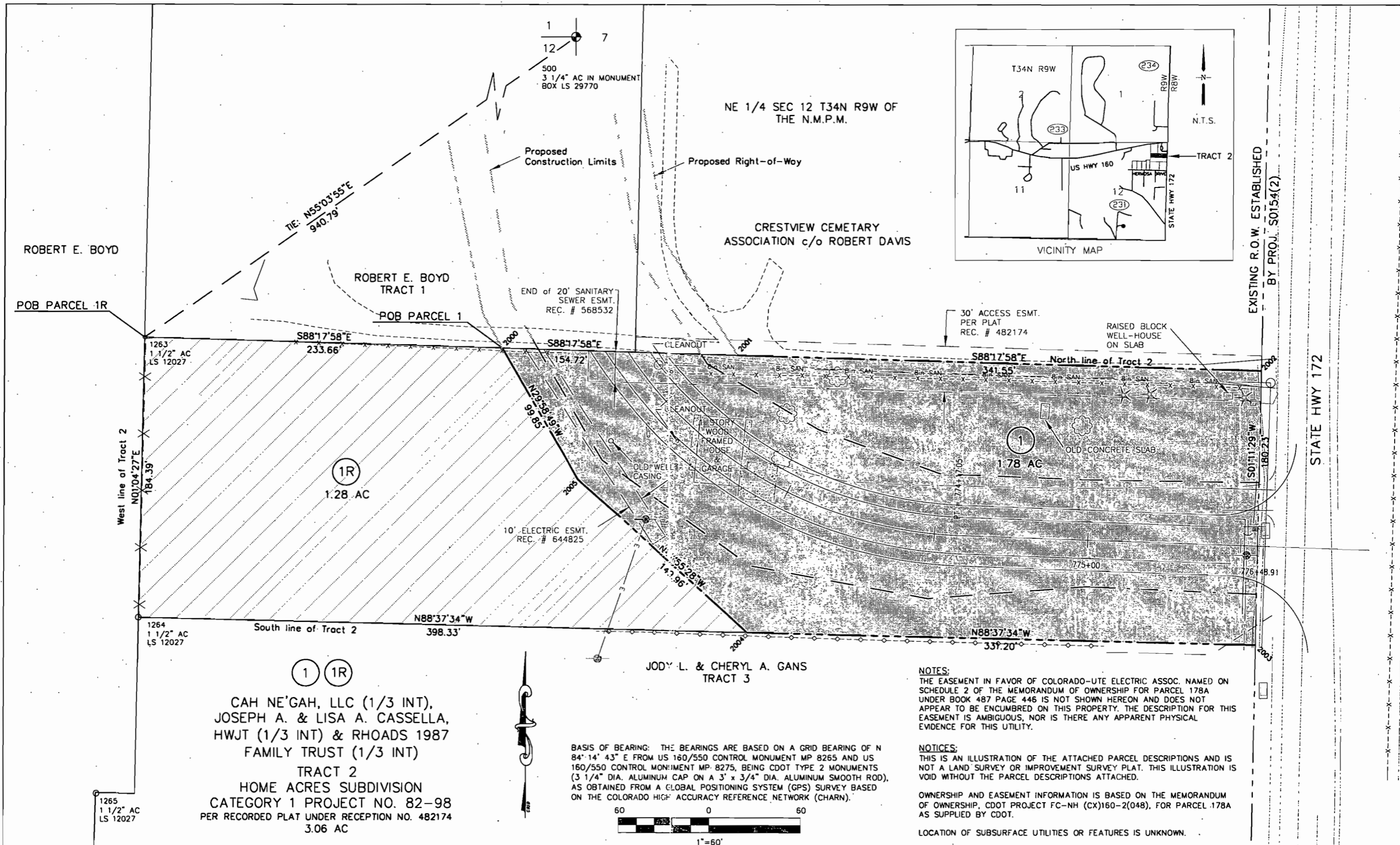
3803 N. Main Street, Suite 300
Durango, Co 81301
Phone: (970) 385-1400 Fax: (970) 385-1410

Region 5

As Constructed
No. Revisions:
Revised:
Void:

PRELIMINARY OWNERSHIP MAP	
PARCEL 4	
Designer: JJR	Structure
Detailer: RDP	Numbers
Sheet Subset: OWNERSHIP	Subset Sheets: 1 OF 1

Project No./Code
NH 1602-082
13497
Sheet Number 1

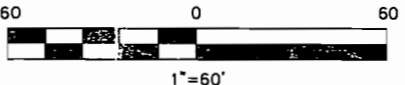


EXISTING R.O.W. ESTABLISHED BY PROJ. S0154(2)

STATE HWY 172

1 1R
 CAH NE'GAH, LLC (1/3 INT),
 JOSEPH A. & LISA A. CASSELLA,
 HWJT (1/3 INT) & RHOADS 1987
 FAMILY TRUST (1/3 INT)
 TRACT 2
 HOME ACRES SUBDIVISION
 CATEGORY 1 PROJECT NO. 82-98
 PER RECORDED PLAT UNDER RECEPTION NO. 482174
 3.06 AC

BASIS OF BEARING: THE BEARINGS ARE BASED ON A GRID BEARING OF N 84° 14' 43\"/>




NOTES:
 THE EASEMENT IN FAVOR OF COLORADO-UTE ELECTRIC ASSOC. NAMED ON SCHEDULE 2 OF THE MEMORANDUM OF OWNERSHIP FOR PARCEL 178A UNDER BOOK 487 PAGE 446 IS NOT SHOWN HEREON AND DOES NOT APPEAR TO BE ENCUMBERED ON THIS PROPERTY. THE DESCRIPTION FOR THIS EASEMENT IS AMBIGUOUS, NOR IS THERE ANY APPARENT PHYSICAL EVIDENCE FOR THIS UTILITY.

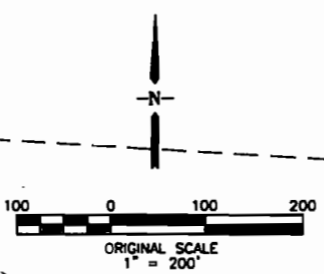
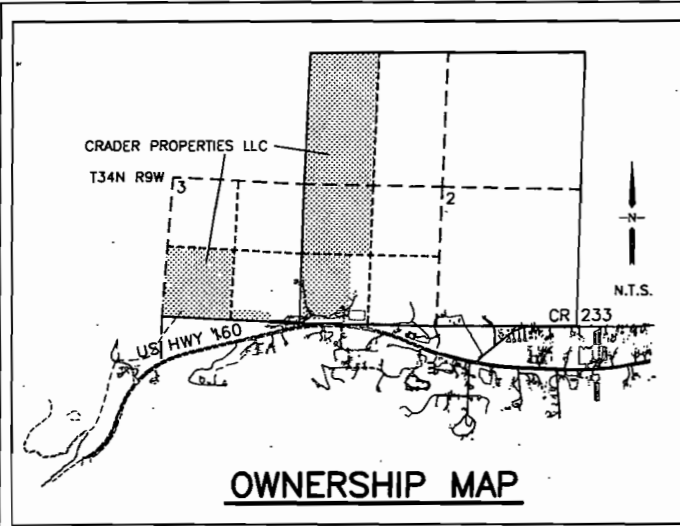
NOTICES:
 THIS IS AN ILLUSTRATION OF THE ATTACHED PARCEL DESCRIPTIONS AND IS NOT A LAND SURVEY OR IMPROVEMENT SURVEY PLAT. THIS ILLUSTRATION IS VOID WITHOUT THE PARCEL DESCRIPTIONS ATTACHED.

OWNERSHIP AND EASEMENT INFORMATION IS BASED ON THE MEMORANDUM OF OWNERSHIP, CDOT PROJECT FC-NH (CX)160-2(048), FOR PARCEL 178A AS SUPPLIED BY CDOT.

LOCATION OF SUBSURFACE UTILITIES OR FEATURES IS UNKNOWN.

UBS JOB#: 6742387

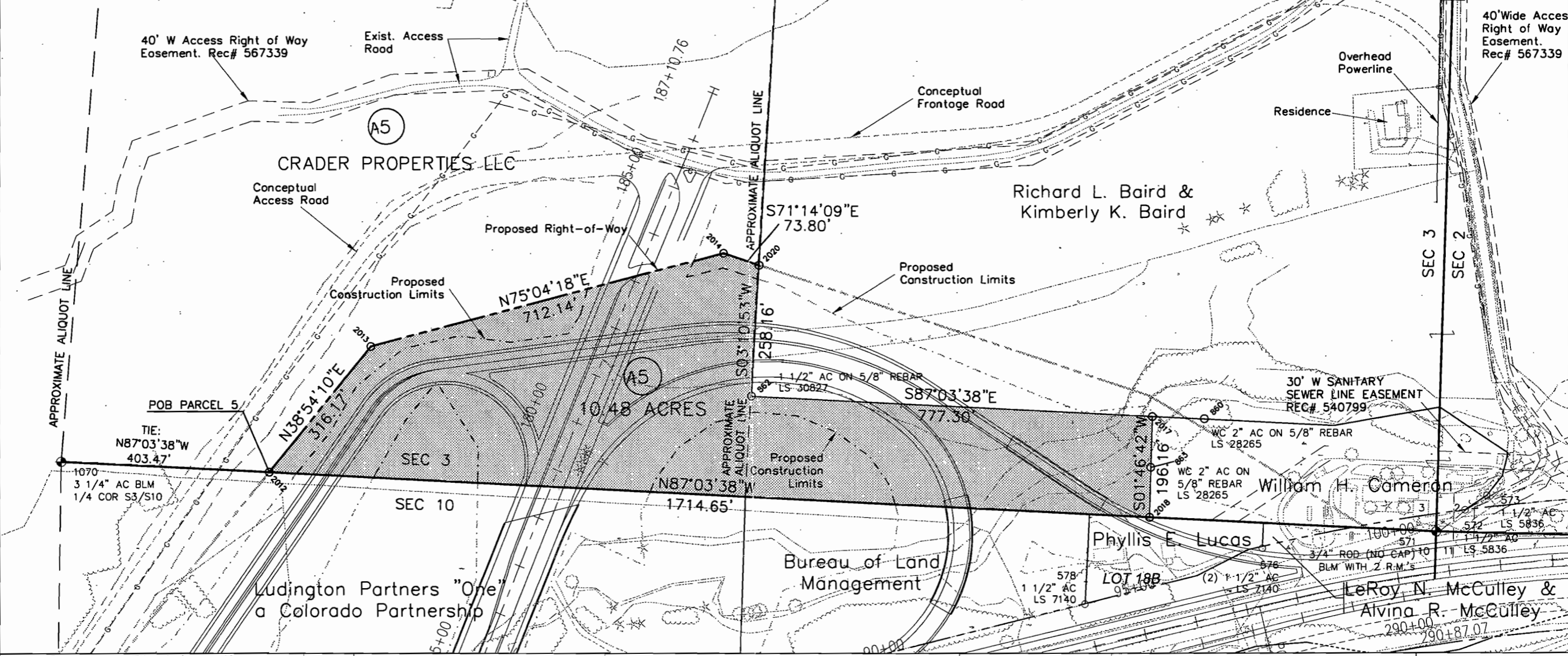
Computer File Information		Sheet Revisions		Colorado Department of Transportation		As Constructed		PARCEL DESCRIPTION ILLUSTRATION		Project No./Code	
Creation Date:	7/30/00 Initials: CST	(R-)		 3803 N Main Street, Suite 300 Durango, CO 81301 Phone: (970) 385-1400 FAX: (970) 385-1410	No. Revisions:	Designer: CST Structure		NH 1602-082			
Last Modification Date:	8/4/00 Initials: JR	(R-)			Revised:	Detailer: CST Numbers		13497			
Full Path:	6842387\CAD\ROW\PLANS\	(R-)			Void:	Sheet Subset: ROW		Subset Sheets: 1 of 1		Sheet Number	
Drawing File Name:	P178A-TAKE.DWG	(R-)			Region 5						1
Acad Ver:	R14 Scale: 1" = 60' Units: ENGLISH	(R-)									



BASIS OF BEARING: THE BEARINGS ARE BASED ON A GRID BEARING OF N 84° 14' 43" E FROM US 160/550 CONTROL MONUMENT MP 8265 AND US 160/550 CONTROL MONUMENT MP 8275, BEING CDOT TYPE 2 MONUMENTS (3 1/4" DIA. ALUMINUM CAP ON A 3" x 3/4" DIA. ALUMINUM SMOOTH ROD), AS OBTAINED FROM A GLOBAL POSITIONING SYSTEM (GPS) SURVEY BASED ON THE COLORADO HIGH ACCURACY REFERENCE NETWORK (CHARN).

NOTICES:
 THIS IS AN ILLUSTRATION OF THE ATTACHED PARCEL DESCRIPTIONS AND IS NOT A LAND SURVEY OR IMPROVEMENT SURVEY PLAT. THIS ILLUSTRATION IS VOID WITHOUT THE PARCEL DESCRIPTIONS ATTACHED.
 OWNERSHIP AND EASEMENT INFORMATION IS BASED ON THE MEMORANDUM OF OWNERSHIP, CDOT PROJECT FC-NH (CX)160-2(048), FOR PARCEL 64 AS SUPPLIED BY CDOT.
 LOCATION OF SUBSURFACE UTILITIES OR FEATURES IS UNKNOWN.
 THE PROPOSED ROW AREA (PARCEL 5) DOES NOT APPEAR TO BE ENCUMBERED BY THE EASEMENTS LISTED IN THE MEMORANDUM OF OWNERSHIP FOR PARCEL NO. 64 AS SUPPLIED BY CDOT, AND NO SURFACE EVIDENCE OF UTILITIES.

SE 1/4 SEC 3
 T34N R9W OF THE
 N.M.F.M.



JES JOB#: 6742387

Computer File Information	
Creation Date:	8/2/00 Initials: CST
Last Modification Date:	5/8/01 Initials: RDP
Full Path:	6842387\CAD\ROW\PLANS\
Drawing File Name:	P64-TAKE.DWG
Acad Ver:	R14 Scale: 1" = 200' Units: ENGLISH

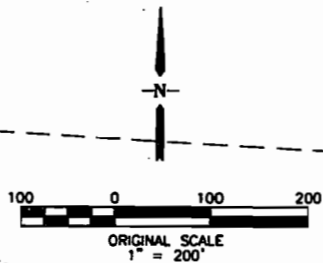
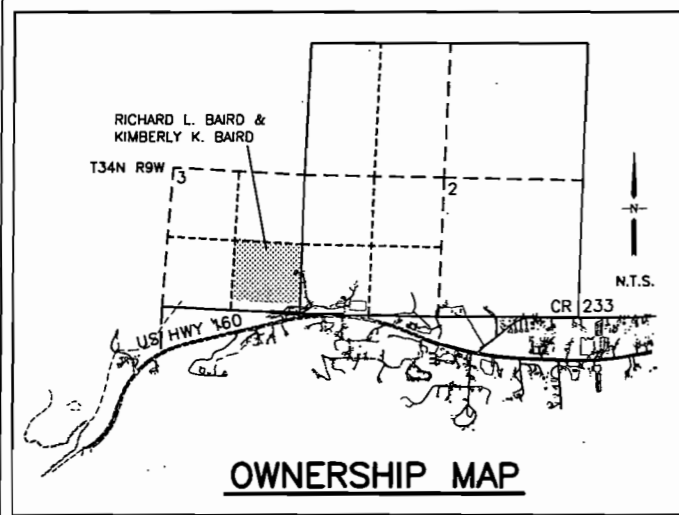
Sheet Revisions	
(R-)	
(R-)	
(R-)	
(R-)	

Colorado Department of Transportation
 3803 N. Main Street, Suite 300
 Durango, CO 81301
 Phone: (370) 385-1400
 FAX: (370) 385-1410
 Region 5

As Constructed
No Revisions:
Revised:
Void:

PARCEL 5 DESCRIPTION ILLUSTRATION	
Designer:	CST
Detailer:	RDP
Sheet Subset:	ROW

Project No./Code	
NH 1602-082	
13497	
1 of 1	Sheet Number



BASIS OF BEARING: THE BEARINGS ARE BASED ON A GRID BEARING OF N 84° 14' 43" E FROM US 160/550 CONTROL MONUMENT MP 8265 AND US 160/550 CONTROL MONUMENT MP 8275, BEING CDOT TYPE 2 MONUMENTS (3 1/4" DIA. ALUMINUM CAP ON A 3" x 3/4" DIA. ALUMINUM SMOOTH ROD), AS OBTAINED FROM A GLOBAL POSITIONING SYSTEM (GPS) SURVEY BASED ON THE COLORADO HIGH ACCURACY REFERENCE NETWORK (CHARN).

NOTICES:
THIS IS AN ILLUSTRATION OF THE ATTACHED PARCEL DESCRIPTIONS AND IS NOT A LAND SURVEY OR IMPROVEMENT SURVEY PLAT. THIS ILLUSTRATION IS VOID WITHOUT THE PARCEL DESCRIPTIONS ATTACHED.

OWNERSHIP AND EASEMENT INFORMATION IS BASED ON THE DEED (REC. #734157) SUPPLIED BY CDOT PROJECT FC-NH (CX)160-2(048).

LOCATION OF SUBSURFACE UTILITIES OR FEATURES IS UNKNOWN.

THE PROPOSED ROW AREA (PARCEL 6) DOES NOT APPEAR TO BE ENCUMBERED BY THE EASEMENTS LISTED IN THE DEED FOR THE PARCEL SHOWN, AS SUPPLIED BY CDOT, AND NO SURFACE EVIDENCE OF UTILITIES.

SE 1/4 SEC 3
T34N R9W OF THE
N.M.F.M.

RICHARD L. BAIRD &
KIMBERLY K. BAIRD

Crader Properties, LLC

Bureau of Land
Management

William H. Cameron

Phyllis E. Lucas

LeRoy N. McCulley &
Alvina R. McCulley

40' W Access Right of Way
Easement. Rec# 567339

34' Wide Access
& Utility Esmnt
Rec# 773384

40' Wide Access
Right of Way
Easement.
Rec# 567339

APPROXIMATE ALIQUOT LINE

APPROXIMATE ALIQUOT LINE

SEC 3
SEC 2

1070
3 1/4" AC BLM
1/4 COR S3/S10

SEC 3

SEC 10

Ludington Partners "One"
a Colorado Partnership

POB PARCEL 6

1 1/2" AC ON
5/8" REBAR
LS 30827

WC 2" AC ON
5/8" REBAR
LS 28265

WC 2" AC ON 5/8" REBAR
LS 28265

30' W SANITARY
SEWER LINE EASEMENT
REC# 540799

2.67 ACRES

WC 2" AC ON 5/8" REBAR
LS 28265

WC 2" AC ON 5/8" REBAR
LS 28265

30' W SANITARY
SEWER LINE EASEMENT
REC# 540799

2.67 ACRES

WC 2" AC ON 5/8" REBAR
LS 28265

WC 2" AC ON 5/8" REBAR
LS 28265

30' W SANITARY
SEWER LINE EASEMENT
REC# 540799

2.67 ACRES

WC 2" AC ON 5/8" REBAR
LS 28265

WC 2" AC ON 5/8" REBAR
LS 28265

30' W SANITARY
SEWER LINE EASEMENT
REC# 540799

2.67 ACRES

WC 2" AC ON 5/8" REBAR
LS 28265

WC 2" AC ON 5/8" REBAR
LS 28265

30' W SANITARY
SEWER LINE EASEMENT
REC# 540799

2.67 ACRES

WC 2" AC ON 5/8" REBAR
LS 28265

WC 2" AC ON 5/8" REBAR
LS 28265

30' W SANITARY
SEWER LINE EASEMENT
REC# 540799

2.67 ACRES

WC 2" AC ON 5/8" REBAR
LS 28265

WC 2" AC ON 5/8" REBAR
LS 28265

30' W SANITARY
SEWER LINE EASEMENT
REC# 540799

2.67 ACRES

WC 2" AC ON 5/8" REBAR
LS 28265

WC 2" AC ON 5/8" REBAR
LS 28265

30' W SANITARY
SEWER LINE EASEMENT
REC# 540799

2.67 ACRES

WC 2" AC ON 5/8" REBAR
LS 28265

WC 2" AC ON 5/8" REBAR
LS 28265

30' W SANITARY
SEWER LINE EASEMENT
REC# 540799

2.67 ACRES

WC 2" AC ON 5/8" REBAR
LS 28265

WC 2" AC ON 5/8" REBAR
LS 28265

30' W SANITARY
SEWER LINE EASEMENT
REC# 540799

2.67 ACRES

WC 2" AC ON 5/8" REBAR
LS 28265

WC 2" AC ON 5/8" REBAR
LS 28265

30' W SANITARY
SEWER LINE EASEMENT
REC# 540799

2.67 ACRES

WC 2" AC ON 5/8" REBAR
LS 28265

WC 2" AC ON 5/8" REBAR
LS 28265

30' W SANITARY
SEWER LINE EASEMENT
REC# 540799

2.67 ACRES

WC 2" AC ON 5/8" REBAR
LS 28265

WC 2" AC ON 5/8" REBAR
LS 28265

30' W SANITARY
SEWER LINE EASEMENT
REC# 540799

2.67 ACRES

WC 2" AC ON 5/8" REBAR
LS 28265

WC 2" AC ON 5/8" REBAR
LS 28265

30' W SANITARY
SEWER LINE EASEMENT
REC# 540799

2.67 ACRES

WC 2" AC ON 5/8" REBAR
LS 28265

WC 2" AC ON 5/8" REBAR
LS 28265

30' W SANITARY
SEWER LINE EASEMENT
REC# 540799

2.67 ACRES

WC 2" AC ON 5/8" REBAR
LS 28265

WC 2" AC ON 5/8" REBAR
LS 28265

30' W SANITARY
SEWER LINE EASEMENT
REC# 540799

2.67 ACRES

WC 2" AC ON 5/8" REBAR
LS 28265

WC 2" AC ON 5/8" REBAR
LS 28265

30' W SANITARY
SEWER LINE EASEMENT
REC# 540799

2.67 ACRES

WC 2" AC ON 5/8" REBAR
LS 28265

WC 2" AC ON 5/8" REBAR
LS 28265

30' W SANITARY
SEWER LINE EASEMENT
REC# 540799

2.67 ACRES

WC 2" AC ON 5/8" REBAR
LS 28265

WC 2" AC ON 5/8" REBAR
LS 28265

30' W SANITARY
SEWER LINE EASEMENT
REC# 540799

2.67 ACRES

WC 2" AC ON 5/8" REBAR
LS 28265

WC 2" AC ON 5/8" REBAR
LS 28265

30' W SANITARY
SEWER LINE EASEMENT
REC# 540799

2.67 ACRES

WC 2" AC ON 5/8" REBAR
LS 28265

WC 2" AC ON 5/8" REBAR
LS 28265

30' W SANITARY
SEWER LINE EASEMENT
REC# 540799

2.67 ACRES

WC 2" AC ON 5/8" REBAR
LS 28265

WC 2" AC ON 5/8" REBAR
LS 28265

30' W SANITARY
SEWER LINE EASEMENT
REC# 540799

2.67 ACRES

WC 2" AC ON 5/8" REBAR
LS 28265

WC 2" AC ON 5/8" REBAR
LS 28265

30' W SANITARY
SEWER LINE EASEMENT
REC# 540799

2.67 ACRES

WC 2" AC ON 5/8" REBAR
LS 28265

WC 2" AC ON 5/8" REBAR
LS 28265

30' W SANITARY
SEWER LINE EASEMENT
REC# 540799

2.67 ACRES

WC 2" AC ON 5/8" REBAR
LS 28265

WC 2" AC ON 5/8" REBAR
LS 28265

30' W SANITARY
SEWER LINE EASEMENT
REC# 540799

2.67 ACRES

WC 2" AC ON 5/8" REBAR
LS 28265

WC 2" AC ON 5/8" REBAR
LS 28265

30' W SANITARY
SEWER LINE EASEMENT
REC# 540799

2.67 ACRES

WC 2" AC ON 5/8" REBAR
LS 28265

WC 2" AC ON 5/8" REBAR
LS 28265

30' W SANITARY
SEWER LINE EASEMENT
REC# 540799

2.67 ACRES

WC 2" AC ON 5/8" REBAR
LS 28265

WC 2" AC ON 5/8" REBAR
LS 28265

30' W SANITARY
SEWER LINE EASEMENT
REC# 540799

2.67 ACRES

WC 2" AC ON 5/8" REBAR
LS 28265

WC 2" AC ON 5/8" REBAR
LS 28265

30' W SANITARY
SEWER LINE EASEMENT
REC# 540799

2.67 ACRES

WC 2" AC ON 5/8" REBAR
LS 28265

WC 2" AC ON 5/8" REBAR
LS 28265

30' W SANITARY
SEWER LINE EASEMENT
REC# 540799

2.67 ACRES

WC 2" AC ON 5/8" REBAR
LS 28265

WC 2" AC ON 5/8" REBAR
LS 28265

30' W SANITARY
SEWER LINE EASEMENT
REC# 540799

2.67 ACRES

WC 2" AC ON 5/8" REBAR
LS 28265

WC 2" AC ON 5/8" REBAR
LS 28265

30' W SANITARY
SEWER LINE EASEMENT
REC# 540799

2.67 ACRES

WC 2" AC ON 5/8" REBAR
LS 28265

WC 2" AC ON 5/8" REBAR
LS 28265

30' W SANITARY
SEWER LINE EASEMENT
REC# 540799

2.67 ACRES

WC 2" AC ON 5/8" REBAR
LS 28265

WC 2" AC ON 5/8" REBAR
LS 28265

30' W SANITARY
SEWER LINE EASEMENT
REC# 540799

2.67 ACRES

WC 2" AC ON 5/8" REBAR
LS 28265

WC 2" AC ON 5/8" REBAR
LS 28265

30' W SANITARY
SEWER LINE EASEMENT
REC# 540799

2.67 ACRES

WC 2" AC ON 5/8" REBAR
LS 28265

WC 2" AC ON 5/8" REBAR
LS 28265

30' W SANITARY
SEWER LINE EASEMENT
REC# 540799

2.67 ACRES

WC 2" AC ON 5/8" REBAR
LS 28265

WC 2" AC ON 5/8" REBAR
LS 28265

30' W SANITARY
SEWER LINE EASEMENT
REC# 540799

2.67 ACRES

WC 2" AC ON 5/8" REBAR
LS 28265

WC 2" AC ON 5/8" REBAR
LS 28265

30' W SANITARY
SEWER LINE EASEMENT
REC# 540799

2.67 ACRES

WC 2" AC ON 5/8" REBAR
LS 28265

WC 2" AC ON 5/8" REBAR
LS 28265

30' W SANITARY
SEWER LINE EASEMENT
REC# 540799

2.67 ACRES

WC 2" AC ON 5/8" REBAR
LS 28265

WC 2" AC ON 5/8" REBAR
LS 28265

30' W SANITARY
SEWER LINE EASEMENT
REC# 540799

2.67 ACRES

WC 2" AC ON 5/8" REBAR
LS 28265

WC 2" AC ON 5/8" REBAR
LS 28265

30' W SANITARY
SEWER LINE EASEMENT
REC# 540799

2.67 ACRES

WC 2" AC ON 5/8" REBAR
LS 28265

WC 2" AC ON 5/8" REBAR
LS 28265

30' W SANITARY
SEWER LINE EASEMENT
REC# 540799

2.67 ACRES

WC 2" AC ON 5/8" REBAR
LS 28265

WC 2" AC ON 5/8" REBAR
LS 28265

30' W SANITARY
SEWER LINE EASEMENT
REC# 540799

2.67 ACRES

WC 2" AC ON 5/8" REBAR
LS 28265

WC 2" AC ON 5/8" REBAR
LS 28265

30' W SANITARY
SEWER LINE EASEMENT
REC# 540799

2.67 ACRES

WC 2" AC ON 5/8" REBAR
LS 28265

WC 2" AC ON 5/8" REBAR
LS 28265

30' W SANITARY
SEWER LINE EASEMENT
REC# 540799

2.67 ACRES

WC 2" AC ON 5/8" REBAR
LS 28265

WC 2" AC ON 5/8" REBAR
LS 28265

30' W SANITARY
SEWER LINE EASEMENT
REC# 540799

2.67 ACRES

WC 2" AC ON 5/8" REBAR
LS 28265

WC 2" AC ON 5/8" REBAR
LS 28265

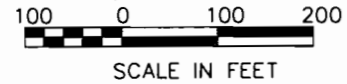
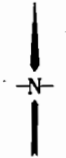
30' W SANITARY
SEWER LINE EASEMENT
REC# 540799

2.67 ACRES

WC 2" AC ON 5/8" REBAR
LS 28265

WC 2" AC ON 5/8" REBAR
LS 28265

30' W SANITARY
SEWER LINE EASEMENT
REC# 540799



SE 1/4 SEC 3
T34N R9W OF THE
N.M.P.M.

NOTE:
THIS MAP CONTAINS THE SAME
INFORMATION PER CDOT PROJECT
No. FC-NH(CX)160-2(048), 91050
AS DEPOSITED UNDER THE COUNTY
SURVEYORS RECORDS, EXCEPT FOR
THE NEW PARCEL AND OWNERSHIP
CHANGES SHOWN HEREON.

Richard L. Baird &
Kimberly K. Baird

64 Croder
Properties LLC

66 Rowean
Croder

64 Croder
Properties LLC

119 LeRoy N.
McCulley &
Alvino R.
McCulley

WILLIAM H. CAMERON

EXISTING
ROW (TYP.)

SEC 3
SEC 10

SEC 3
SEC 2

SEC 2
SEC 11

Ludington Partners "One"
o Colorado Partnership

118 Bureau
of Land
Management

123 Phyllis E.
Lucas
LOT 18B

U.S. HWY 160

158 Gregory B.
Martin J., &
Mary Ellen Daley

159 Thomas
A. Probst

160 Bryon
G. Evans &
Suzanne
L. Evans

162 Elwin T.
Smith, Trustee

163 Elwin T.
Smith, Trustee

119 LeRoy N.
McCulley &
Alvino R.
McCulley

157
Barbara
L. Griffith

120 Clarence L.
Gohn & Julia
R. Gohn
LOT 19


122 Orlando
Gutierrez &
Inez
Gutierrez
LOT 18A

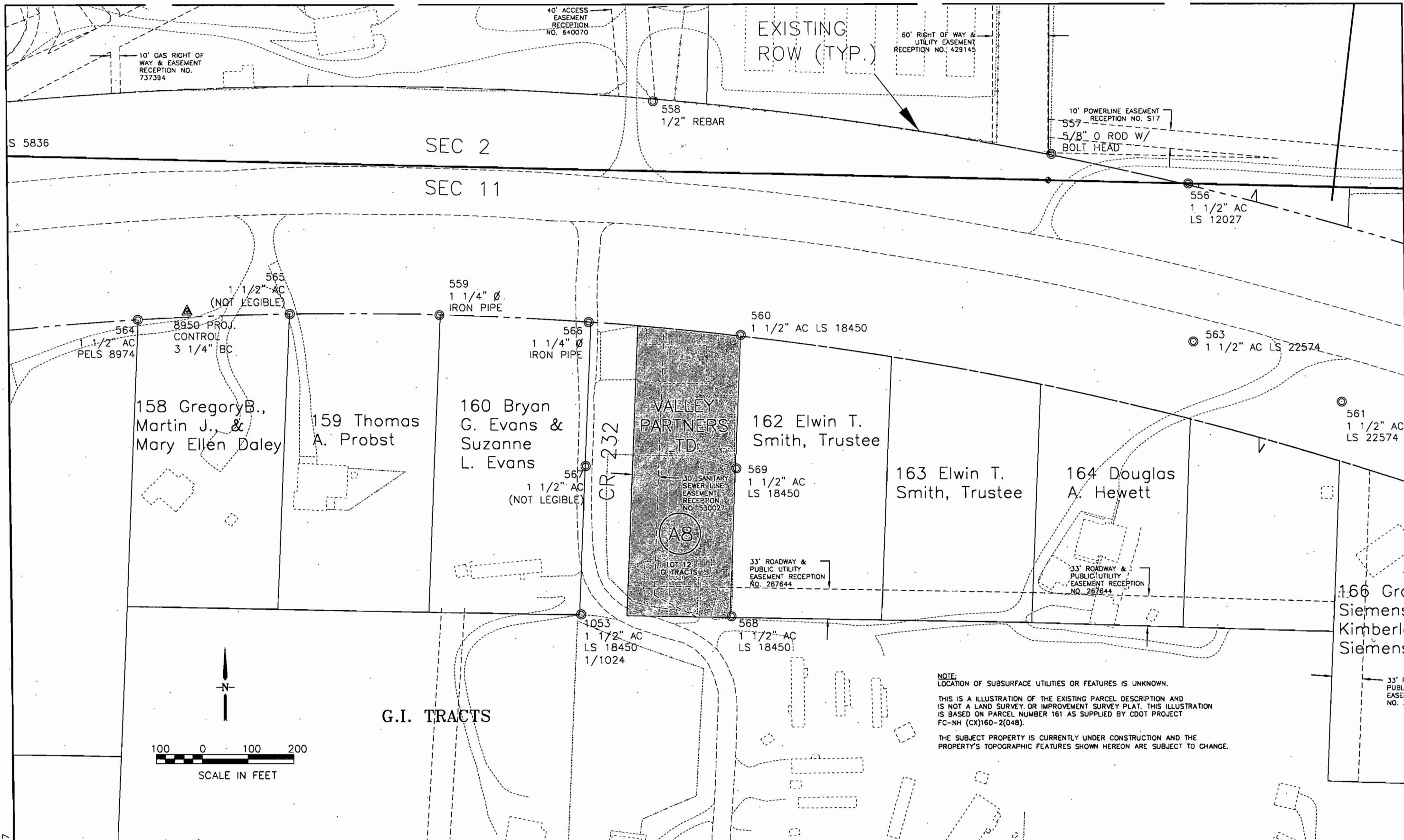
LOT 17

118 Bureau of
Land
Management

G.I. TRACTS

JOB#: 6742387

Computer File Information		Sheet Revisions		Colorado Department of Transportation		As Constructed		PRELIMINARY OWNERSHIP MAP		Project No./Code	
Creation Date: 9/14/00	Initials: RDP	(R-) 7/23/01	Changed parcel name	JR	 3803 N. Main Street, Suite 300 Durango, Co 81301 Phone: (970) 385-1400 Fax: (970) 385-1410 Region 5	No Revisions:		PARCEL A7		NH 1602-082	
Last Modification Date: 7/23/01	Initials: RDP	(R-) 7/23/01	Added appraisal points	JR.		Revised:		Designer: JJR Structure		13497	
Full Path: \6742387\CAD\ROW\PLANS\		(R-) 7/23/01				Void:		Detailer: RDP Numbers			
Drawing File Name: P67_OWNERSHIP.DWG		(R-) 7/23/01						Sheet Subset: OWNERSHIP		Subset Sheets: 1 OF 1	
Acad Ver: R14	Scale: 1" = 200' Units: ENGLISH	(R-) 7/23/01							Sheet Number		1




Computer File Information

Creation Date: 9/7/01	Initials: RDP
Last Modification Date: 9/7/01	Initials: RDP
Full Path: \6742387\CAD\ROW\PLANS\	
Drawing File Name: P161_OWNERSHIP.DWG	
Acad Ver: R14	Scale: 1" = 100' Units: ENGLISH

Sheet Revisions

Rev	Date	Description	By
R-	7/23/01	Changed parcel name	JR
R-	7/23/01	Added appraisal points	JR

Colorado Department of Transportation



3803 N. Main Street, Suite 300
 Durango, Co 81301
 Phone: (970) 385-1400 Fax: (970) 385-1410

Region 5

As Constructed

No Revisions:
Revised:
Void:

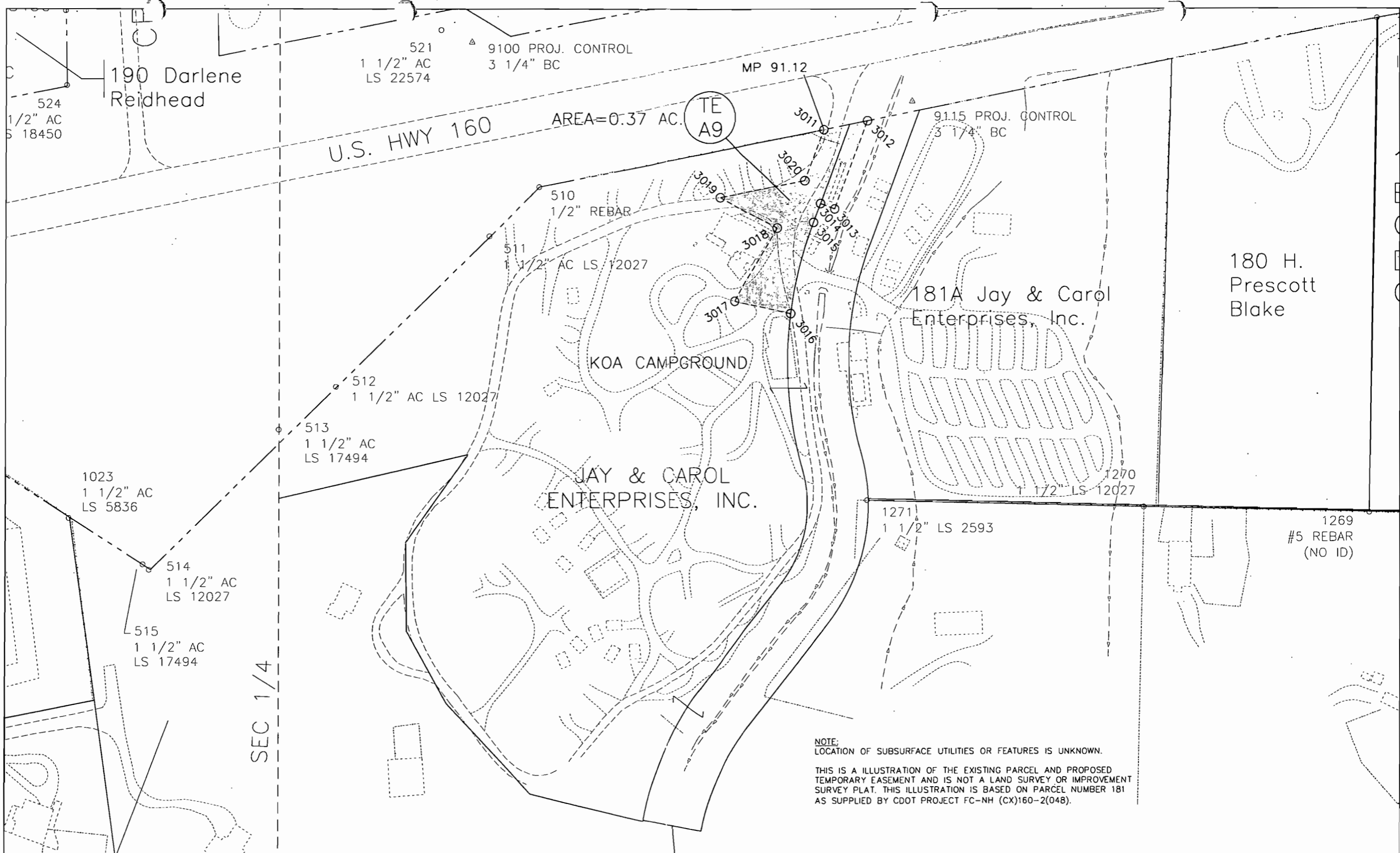
PRELIMINARY OWNERSHIP MAP
 PARCEL A8

Designer: JJR	Structure:
Detailer: RDP	Numbers:
Sheet Subset: OWNERSHIP	Sheet Number: 1 OF 1

Project No./Code

NH 1602-082
13497
Sheet Number 1


JOB#: 6742387



UBS JOB#: 6742387

Computer File Information	
Creation Date: 10/2/01	Initials: RDP
Last Modification Date: 10/4/01	Initials: RDP
Full Path: \6742387\CAD\ROW\PLANS\	
Drawing File Name: TE-A9_OWNERSHIP.DWG	
Acad Ver: R2000	Scale: 1" = 60' Units: ENGLISH

Sheet Revisions	
(R-)	
(R-)	
(R-)	
(R-)	
(R-)	

Colorado Department of Transportation

 3803 N. Main Street, Suite 300
 Durango, Co 81301
 Phone: (970) 385-1400 Fax: (970) 385-1410
 Region 5

As Constructed
No Revisions:
Revised:
Void:

PRELIMINARY OWNERSHIP MAP TEMPORARY EASEMENT TE-A9	
Designer: JJR	Structure
Detailer: RDP	Numbers
Sheet Subset: OWNERSHIP	Subset Sheets: 1 OF 1

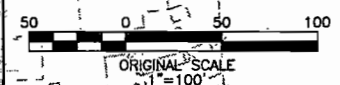
Project No./Code
NH 1602-082
13497
Sheet Number 1

BASIS OF BEARING: THE BEARINGS ARE BASED ON A GRID BEARING OF N 84° 14' 43" E FROM US 160/550 CONTROL MONUMENT MP 8265 AND US 160/550 CONTROL MONUMENT MP 8275, BEING CDOT TYPE 2 MONUMENTS (3 1/4" DIA. ALUMINUM CAP ON A 3/4" DIA. ALUMINUM SMOOTH ROD), AS OBTAINED FROM A GLOBAL POSITIONING SYSTEM (GPS) SURVEY BASED ON THE COLORADO HIGH ACCURACY REFERENCE NETWORK (CHARN).

NOTICES: THIS IS AN ILLUSTRATION OF THE ATTACHED PARCEL DESCRIPTIONS AND IS NOT A LAND SURVEY OR IMPROVEMENT SURVEY. THIS ILLUSTRATION IS VOID WITHOUT THE PARCEL DESCRIPTIONS ATTACHED.

OWNERSHIP AND EASEMENT INFORMATION IS BASED ON THE MEMORANDUM OF OWNERSHIP, CDOT PROJECT EC-NH (CX)160-2(048), FOR PARCEL 192 AS SUPPLIED BY CDOT.

LOCATION OF SUBSURFACE UTILITIES OR FEATURES IS UNKNOWN.



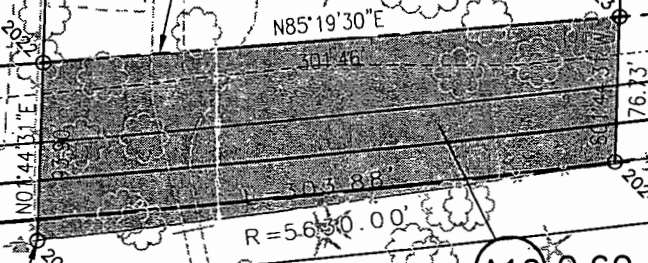
10' ELECT. EASEMENT
REC. No. 772811

(A10)
PALMER PIPE &
CONSTRUCTION L.L.C.
Lot 17 of
Pine Acres Subdivision

LIMITS OF CONSTRUCTION

PROPOSED ROW

LIMITS OF CONSTRUCTION



(A10) 0.60 Acres


POB PARCEL A10

US 160

UBRS JOB#: 6742387

Computer File Information	
Creation Date:	1/9/02 Initials: RDP
Last Modification Date:	2/13/02 Initials: RDP
Full Path:	6842387\CAD\ROW\PLANS\
Drawing File Name:	P192-TAKE.DWG
Acad Ver:	R2000 Scale: 1"= 100' Units: ENGLISH

Sheet Revisions	
(R-)	
(R-)	
(R-)	
(R-)	
(R-)	

Colorado Department of Transportation

 3803 N. Main Street, Suite 300
 Durango, CO 81301
 Phone: (970) 385-1400
 FAX: (970) 385-1410
 Region 5

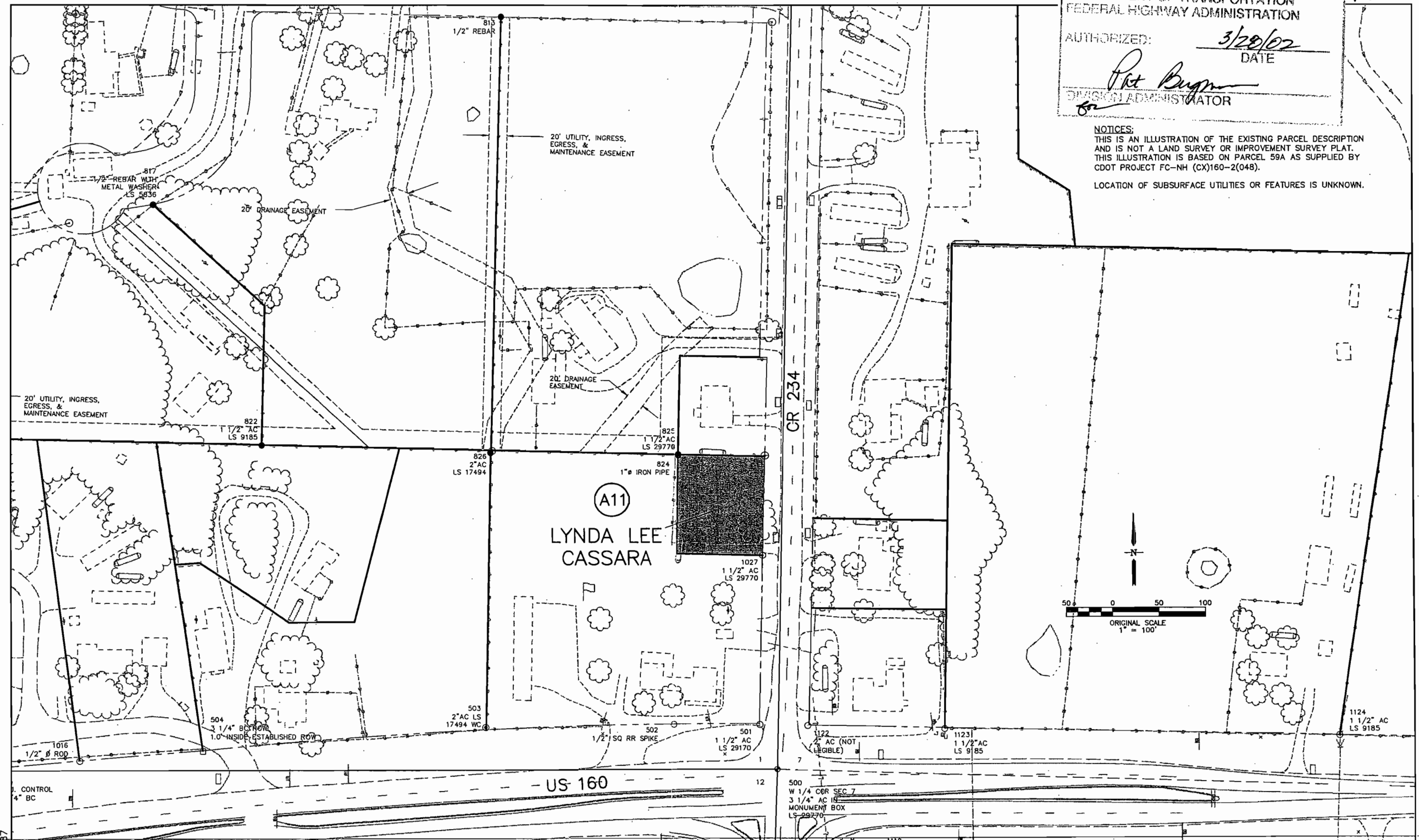
As Constructed
No Revisions:
Revised:
Void:

PARCEL A10 DESCRIPTION ILLUSTRATION	
Designer:	RDP Structure
Detailer:	RDP Numbers
Sheet Subset:	ROW Subset Sheets: 1 of 1

Project No./Code
NH 1602-082
13497
Sheet Number 1

AUTHORIZED: *Pet Bagn*
DATE: 3/29/02
DIVISION ADMINISTRATOR


NOTICES:
THIS IS AN ILLUSTRATION OF THE EXISTING PARCEL DESCRIPTION AND IS NOT A LAND SURVEY OR IMPROVEMENT SURVEY PLAT. THIS ILLUSTRATION IS BASED ON PARCEL 59A AS SUPPLIED BY CDOT PROJECT FC-NH (CX)160-2(048).
LOCATION OF SUBSURFACE UTILITIES OR FEATURES IS UNKNOWN.



UTBS JOB#: 6742387

Computer File Information	
Creation Date:	1/11/02 Initials: RDP
Last Modification Date:	1/11/02 Initials: RDP
Full Path:	6842387\CAD\ROW\PLANS\
Drawing File Name:	P59A_OWNERSHIP.DWG
Acad Ver:	R2000 Scale: 1" = 100' Units: ENGLISH

Sheet Revisions	
(R-)	
(R-)	
(R-)	
(R-)	

Colorado Department of Transportation

 3803 N. Main Street, Suite 300
 Durango, CO 81301
 Phone: (970) 385-1400
 FAX: (970) 385-1410
 Region 5

As Constructed
 No Revisions:
 Revised:
 Void:

PRELIMINARY OWNERSHIP MAP
 PARCEL A11
 Designer: RDP Structure
 Detailer: RDP Numbers
 Sheet Subset: ROW Subset Sheets: 1 of 1

Project No./Code
 NH 1602-082
 13497
 Sheet Number 1