

COLORADO

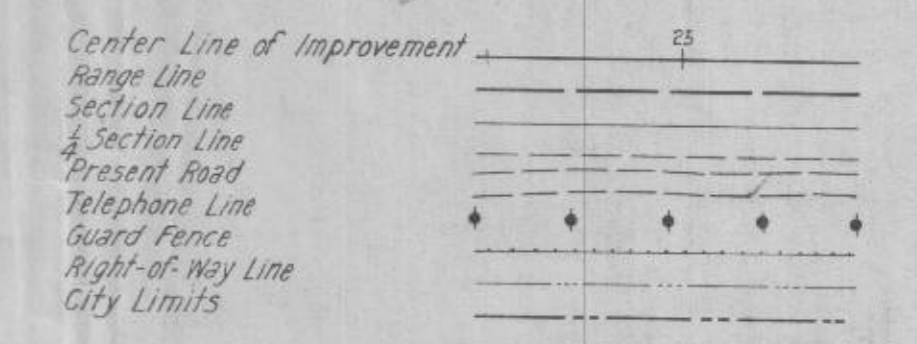
STATE HIGHWAY DEPARTMENT

PLAN AND PROFILE OF PROPOSED FEDERAL AID PROJECT NO. NRM-279-J STATE HIGHWAY NO. 8 JEFFERSON COUNTY

INDEX OF SHEETS

	1. Title Sheet	
	2. Typical Cross-Section & Summary of Quantities	
	3-6A. Details of Bridge-Sta. 314	
	7. Standard Double Concrete Box Culverts (Sta. 304)	M-10-B
	8. Standard Concrete Box Culverts	M-104-D
	9.	M-103-D
CONST. DIVN. 1	10. Standard Wire Fences & Marker Posts	M-24-F
	11. Cable Guard Fence	M-20-F
	12. Methods For Super-elevation and Widening of Curves	M-1-A
	13. Plan & Profile	
	14-26. Cross-Sections	
	3A. Standard Headwalls	M-102-E
CONST. DIVN. 2	1. TITLE SHEET	
	2. TYPICAL SECTION AND SUMMARY OF QUANTITIES	
	3. DETAILS OF APPROACH SLAB	
	4. STANDARD SUPERELEVATION & WIDENING SHEET (M-1-A)	
	13. PLAN AND PROFILE SHEET	

CONVENTIONAL SIGNS



SCALES
 ON PLAN, 1 IN. = 100 FT.
 ON PROFILE { 1 IN. = 100 FT. HORIZONTAL
 { 1 IN. = 10 FT. VERTICAL

GRADE LINE ON PROFILE IS SHOWN AS GRADE OF FINISHED ROAD
 GROSS LENGTH OF PROJECT 1,912.1 FT. = 0.362 MI.
 NET LENGTH OF PROJECT



SCALE: 1 INCH = 1 MILE

RECOMMENDED FOR APPROVAL 11/2/33
Ed. L. ...
 ASSISTANT ENGINEER

APPROVED
Chas. V. ...
 STATE HIGHWAY ENGINEER

RECOMMENDED FOR APPROVAL
 DIST. ENG. BUREAU PUBLIC ROADS

RECOMMENDED FOR APPROVAL
 CHIEF ENG. BUREAU PUBLIC ROADS

APPROVED
 DIRECTOR BUREAU PUBLIC ROADS

