

Delta Pa. 011

FED. ROAD DIST. NO.	STATE	U.S.P.W.H. PROJ. NO.	SHEET NO.	TOTAL SHEETS
3	COLO.	N.R.S.-W.R.409 (1935)	1	

# COLORADO STATE HIGHWAY DEPARTMENT

## PLAN AND PROFILE OF PROPOSED U. S. P. W. HIGHWAY PROJECT NO. N.R.S. - W.R. 409 (1935) STATE HIGHWAY NO. 92 DELTA COUNTY

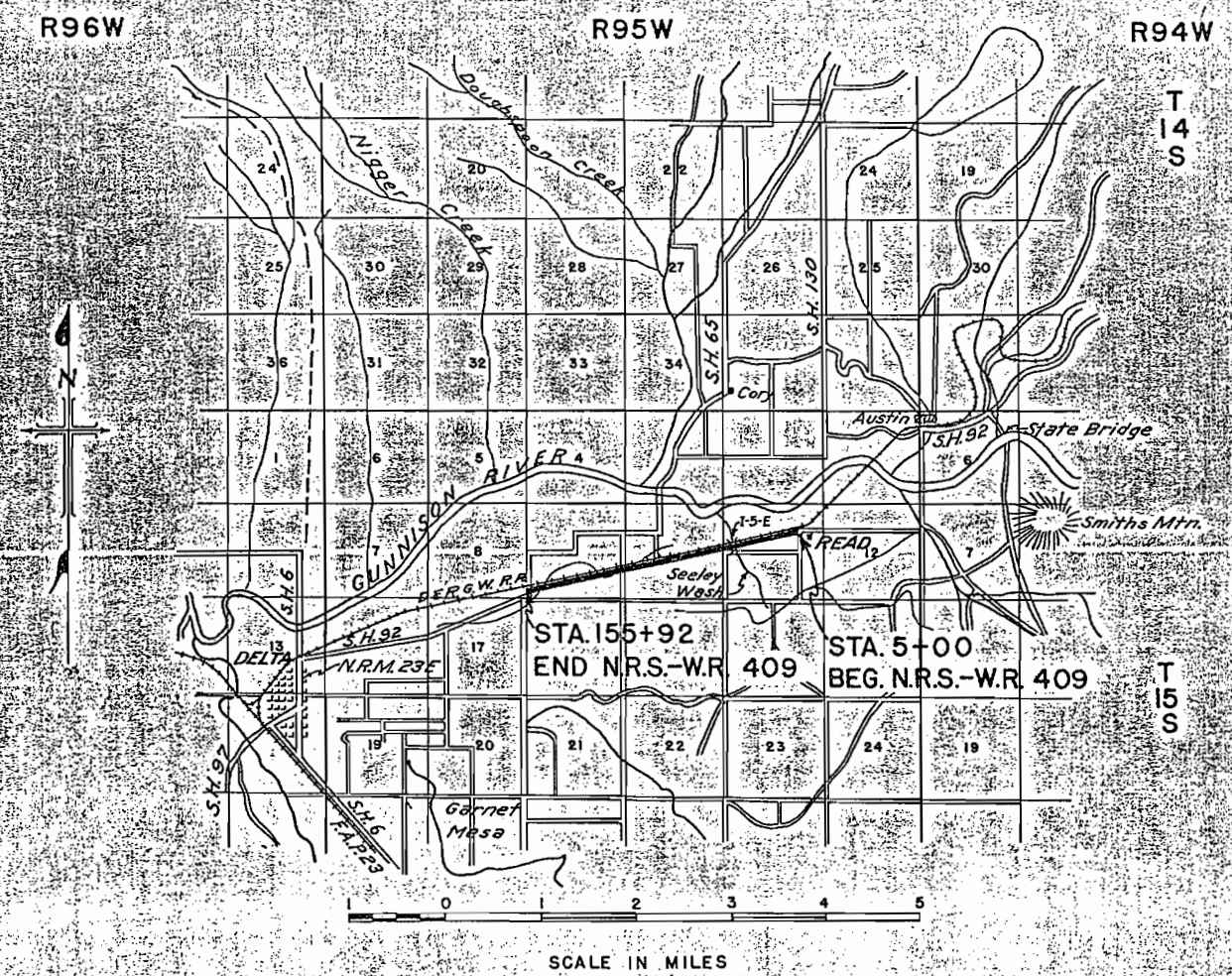
### INDEX OF SHEETS

1. SKETCH MAP AND TITLE SHEET.
2. TYPICAL CROSS SECTION AND SUMMARY OF QUANTITIES.
3. TREATED TIMBER BRIDGE, STA. 42+
4. STANDARD WIRE FENCES AND MARKER POSTS M-24-F (WOOD POSTS)
- 5 TO 7. PLAN AND PROFILE SHEETS.

### CONVENTIONAL SIGNS

- CENTER LINE OF SURVEY 150
- RIGHT OF WAY LINES
- TOWNSHIP OR RANGE LINES
- SECTION LINES
- ONE QUARTER SECTION LINES
- RAILROAD TRACKS
- BARBED WIRE FENCE
- POLE LINES

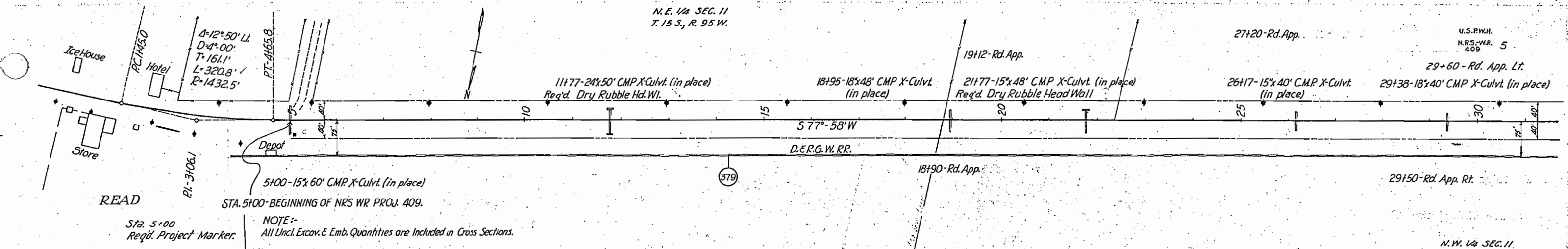
**SCALES**  
 ON PLAN, 1 IN. - 100 FT.  
 ON PROFILE { 1 IN. - 100 FT. HORIZONTAL  
 1 IN. - 10 FT. VERTICAL  
 GRADE LINE ON PROFILE IS SHOWN AS GRADE OF FINISHED ROAD  
 GROSS LENGTH OF PROJECT } 15,092 FT. = 2.858 MILES  
 NET LENGTH OF PROJECT }



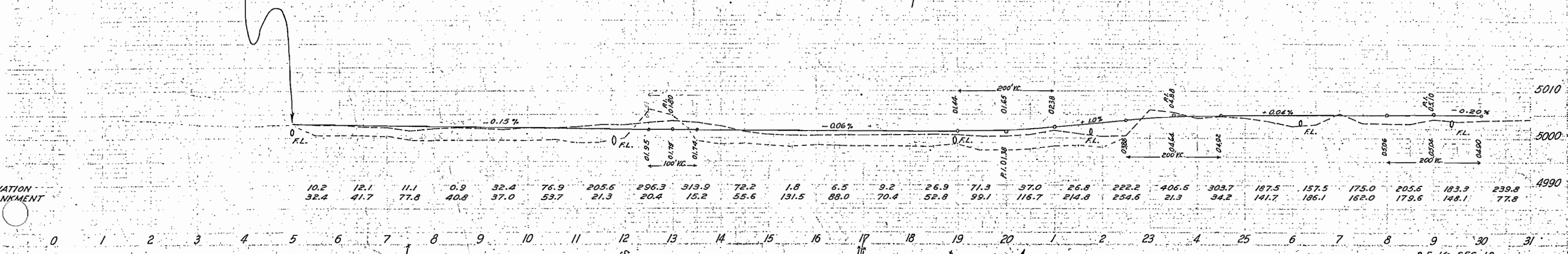
RECOMMENDED FOR APPROVAL 2/15/36  
*J. J. Maloney*  
 ASSISTANT ENGINEER  
 APPROVED  
*Chas. J. Van*  
 STATE HIGHWAY ENGINEER  
 RECOMMENDED FOR APPROVAL  
 DIST. ENG. BUREAU PUBLIC ROADS  
 RECOMMENDED FOR APPROVAL  
 CHIEF ENG. BUREAU PUBLIC ROADS  
 APPROVED  
 DIRECTOR BUREAU PUBLIC ROADS

N.E. 1/4 SEC. 11  
T. 15 S., R. 95 W.

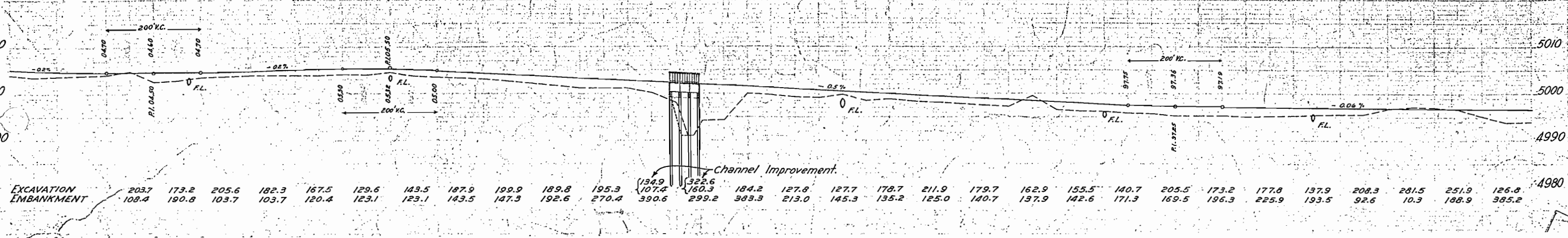
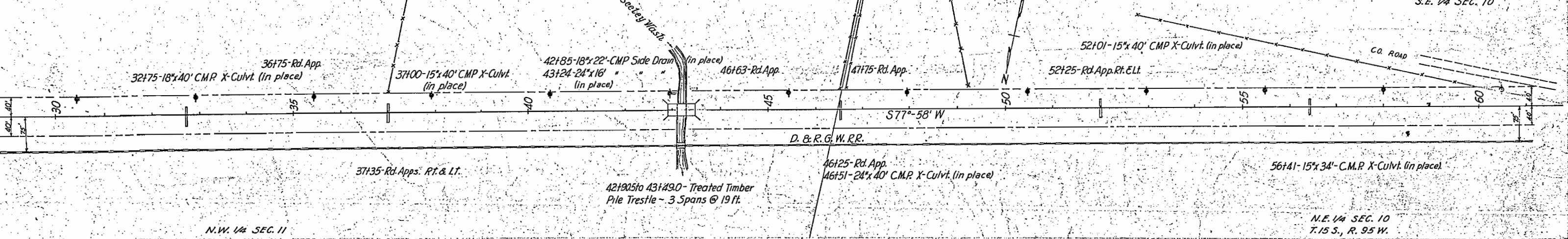
U.S.P.W.H.  
N.R.S.-W.R. 5  
409  
29+60 - Rd. App. Lt.



NOTE:-  
All Uncl. Excav. & Emb. Quantities are Included in Cross Sections.



10.2	12.1	11.1	0.9	32.4	76.9	205.6	296.3	313.9	72.2	1.8	6.5	9.2	26.9	71.3	37.0	26.8	222.2	406.5	303.7	187.5	157.5	175.0	205.6	183.3	239.8	4990
32.4	41.7	77.8	40.8	37.0	53.7	21.3	20.4	15.2	55.6	131.5	88.0	70.4	52.8	99.1	116.7	214.8	254.6	21.3	34.2	141.7	186.1	162.0	179.6	148.1	77.8	

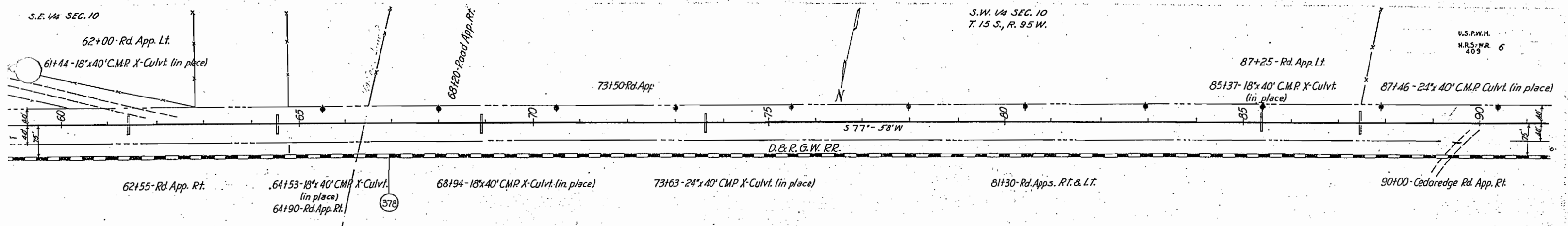


EXCAVATION	203.7	173.2	205.6	182.3	167.5	129.6	143.5	187.9	199.9	189.8	195.3	134.9	322.6	184.2	127.8	127.7	178.7	211.9	179.7	162.9	155.5	140.7	205.5	173.2	177.8	137.9	208.3	281.5	251.9	126.8	4980
EMBANKMENT	108.4	190.8	103.7	103.7	120.4	123.1	123.1	143.5	147.3	192.6	270.4	390.6	299.2	383.3	213.0	145.3	135.2	125.0	140.7	137.9	142.6	171.3	169.5	196.3	225.9	193.5	92.6	10.3	188.9	385.2	

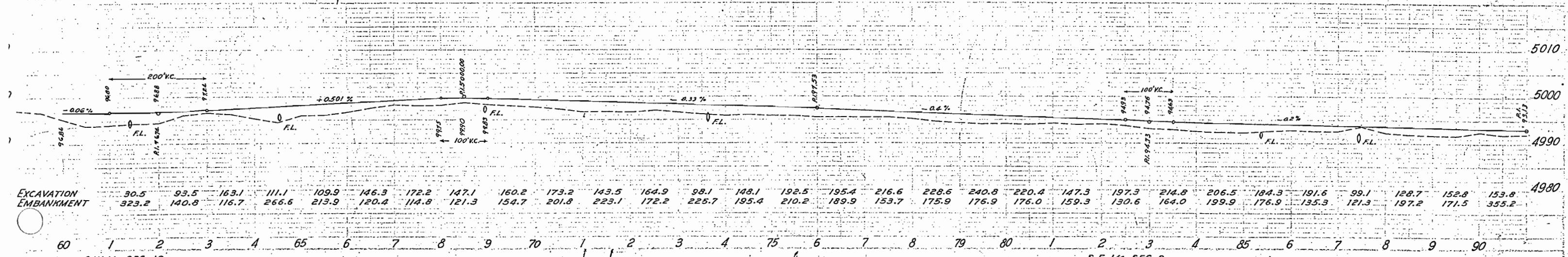
S.E. 1/4 SEC. 10

S.W. 1/4 SEC. 10  
T. 15 S., R. 95 W.

U.S.P.W.H.  
N.R.S.-W.R. 6  
409

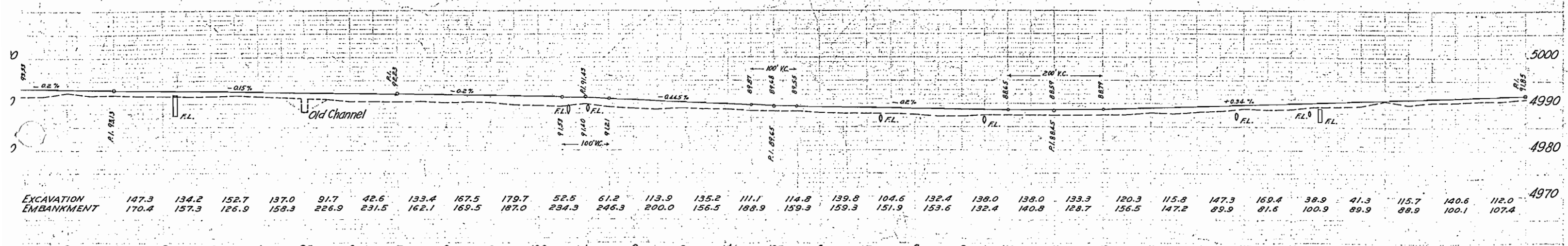
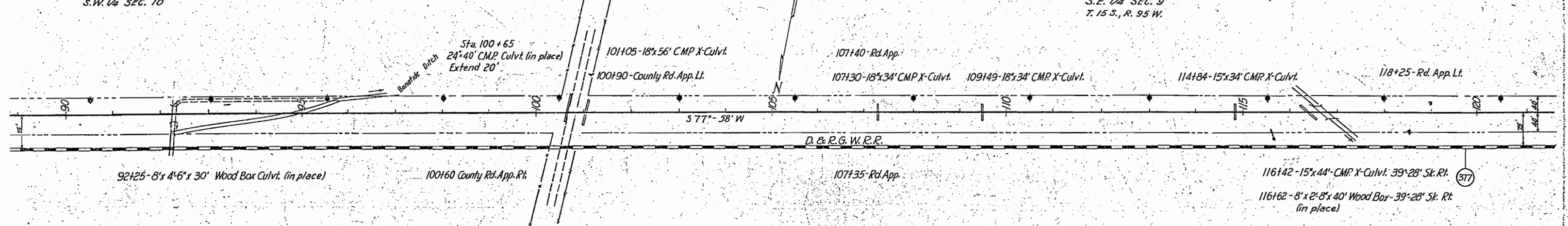


N.E. 1/4 SEC. 10



S.W. 1/4 SEC. 10

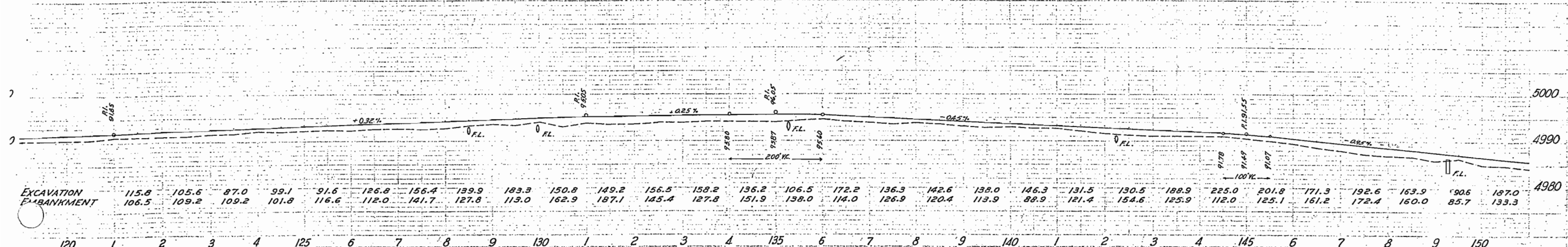
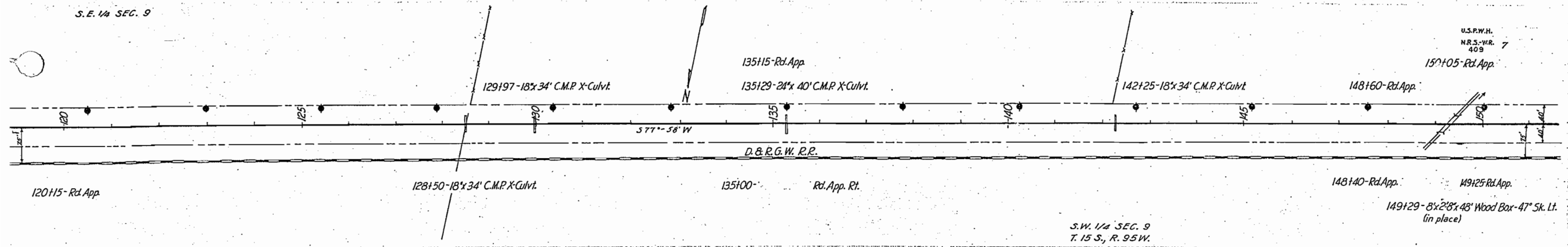
S.E. 1/4 SEC. 9  
T. 15 S., R. 95 W.



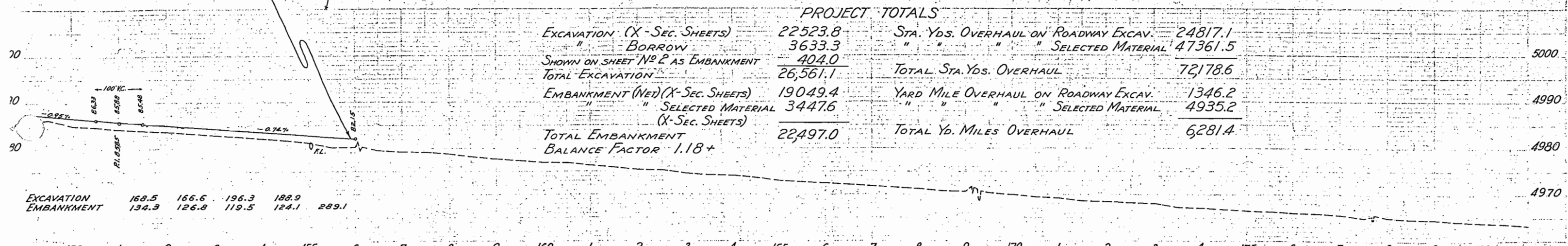
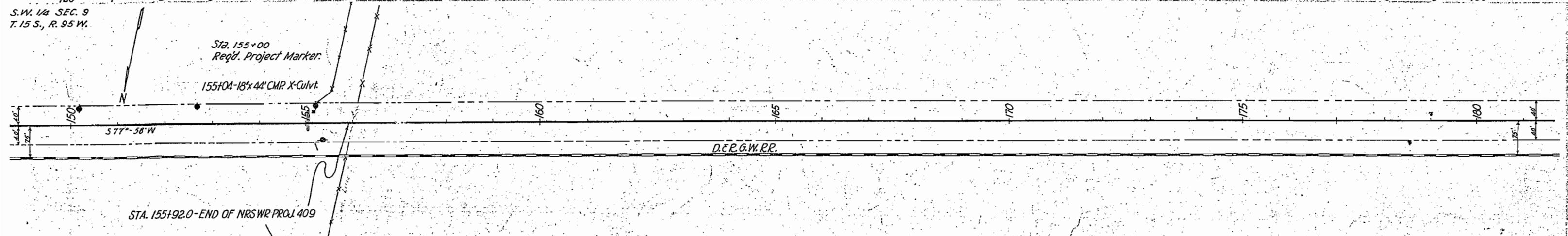
S.E. 1/4 SEC. 9

U.S.P.W.H.  
N.R.S.-WR.  
409

150+05 Rd.App.



EXCAVATION	115.8	105.6	87.0	99.1	91.6	126.8	156.4	139.9	183.3	150.8	149.2	156.5	158.2	136.2	106.5	172.2	136.3	142.6	138.0	146.3	131.5	130.5	188.9	225.0	201.8	171.3	192.6	163.9	90.6	187.0
EMBANKMENT	106.5	109.2	109.2	101.8	116.6	112.0	141.7	127.8	113.0	162.9	187.1	145.4	127.8	151.9	138.0	114.0	126.9	120.4	113.9	88.9	121.4	154.6	125.9	112.0	125.1	161.2	172.4	160.0	85.7	133.3



EXCAVATION	168.5	166.6	196.3	188.9	
EMBANKMENT	134.3	126.8	119.5	124.1	289.1

PROJECT TOTALS		
EXCAVATION (X-SEC. SHEETS)	22523.8	STA. YDS. OVERHAUL ON ROADWAY EXCAV.
" BORROW	3633.3	" " " " SELECTED MATERIAL
SHOWN ON SHEET NO 2 AS EMBANKMENT	404.0	TOTAL STA. YDS. OVERHAUL
TOTAL EXCAVATION	26,561.1	YARD MILE OVERHAUL ON ROADWAY EXCAV.
EMBANKMENT (NET) (X-SEC. SHEETS)	19049.4	" " " " SELECTED MATERIAL
" " " " SELECTED MATERIAL	3447.6	TOTAL YD. MILES OVERHAUL
TOTAL EMBANKMENT	22,497.0	
BALANCE FACTOR	1.18+	