

# COLORADO STATE HIGHWAY DEPARTMENT

## PLAN AND PROFILE OF PROPOSED U.S.P.W. HIGHWAY PROJECT N.R.S. 365-B (1935) STATE HIGHWAY NO. 115 FREMONT COUNTY

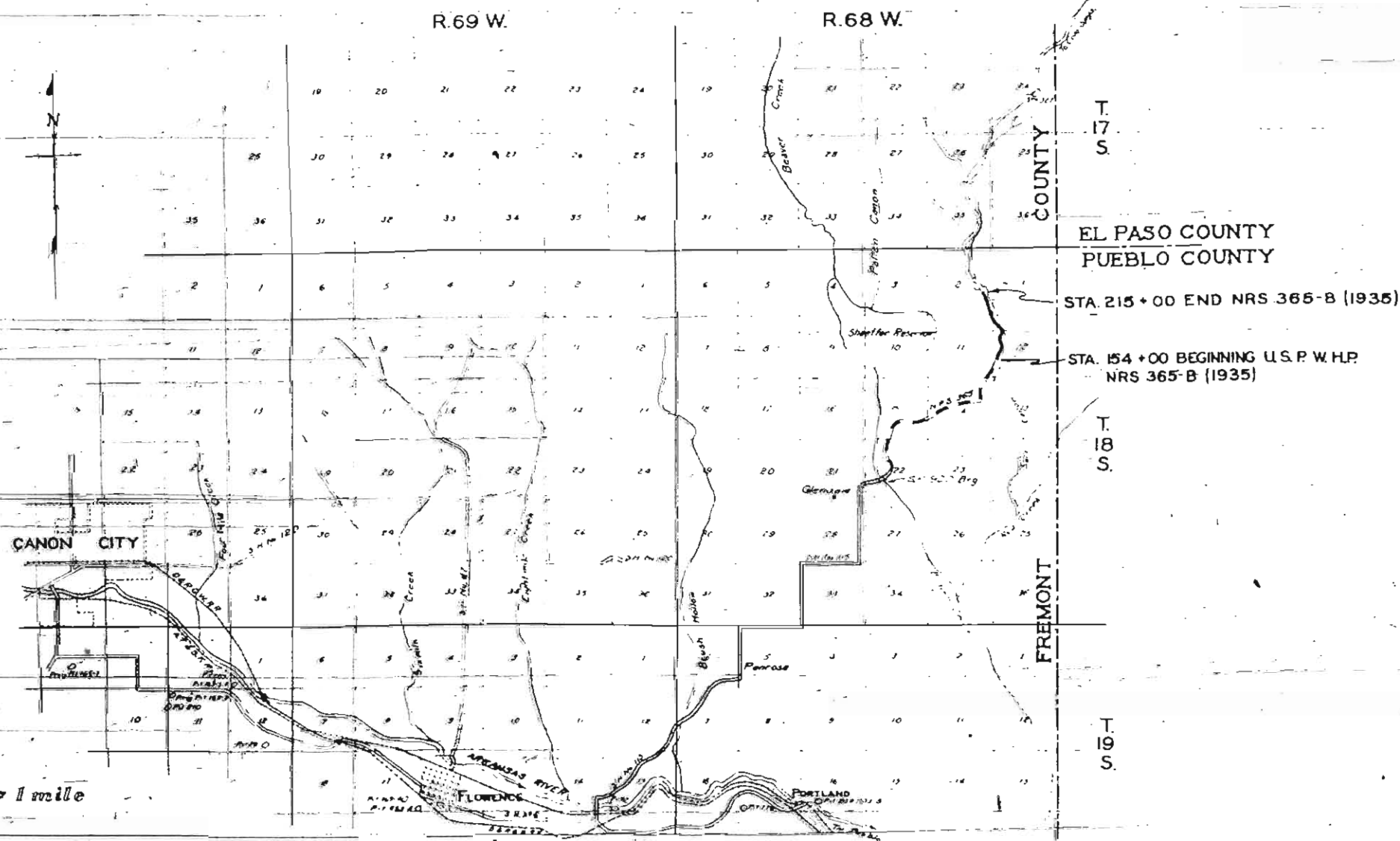
**INDEX OF SHEETS**

Sheet No 1	Title Sheet
" 2	Typical Cross Section and Summary of Quantities
" 3	Standard Methods for Super-elevation of Curves M-1-A
" 4	Standard Wire Fences and Marker Posts M-24-F
" 5	Standard Wire Cable Guard Fence M-20-G
" 6	Standard Headwall M-102-E
" 7	750 Alignment Plan and Profile

**CONVENTIONAL SIGNS**

- CENTER LINE OF SURVEY
- RIGHT OF WAY LINES
- SECTION LINES
- ONE QUARTER SECTION LINES
- FENCE LINES
- WIRE CABLE GUARD FENCE
- POLE LINES

**SCALES**  
 ON PLAN 1 IN. = 100 FT.  
 ON PROFILE 1 IN. = 100 FT. HORIZONTAL  
 1 IN. = 10 FT. VERTICAL  
 GRADE LINE ON PROFILE IS SHOWN AS GRADE OF FINISHED ROAD  
 GROSS LENGTH OF PROJECT } 6043.4 FT. = 1.144 MI.  
 NET LENGTH OF PROJECT }



Scale 1 inch = 1 mile

RECOMMENDED FOR APPROVAL 9/21/35

*J. J. [Signature]*  
 ASSISTANT ENGINEER

APPROVED  
*C. [Signature]*  
 STATE HIGHWAY ENGINEER

RECOMMENDED FOR APPROVAL

CHIEF ENGINE BUREAU PUBLIC WORKS

RECOMMENDED FOR APPROVAL

CHIEF ENGINE BUREAU PUBLIC WORKS

APPROVED

DIRECTOR BUREAU PUBLIC WORKS



