

FED. ROAD DIST. NO.	STATE	U.S. PROJ. NO.	SHEET NO.	TOTAL SHEETS
	COLO.	N.R.S. 373-D (1935)	1	

R.O.W.

# COLORADO

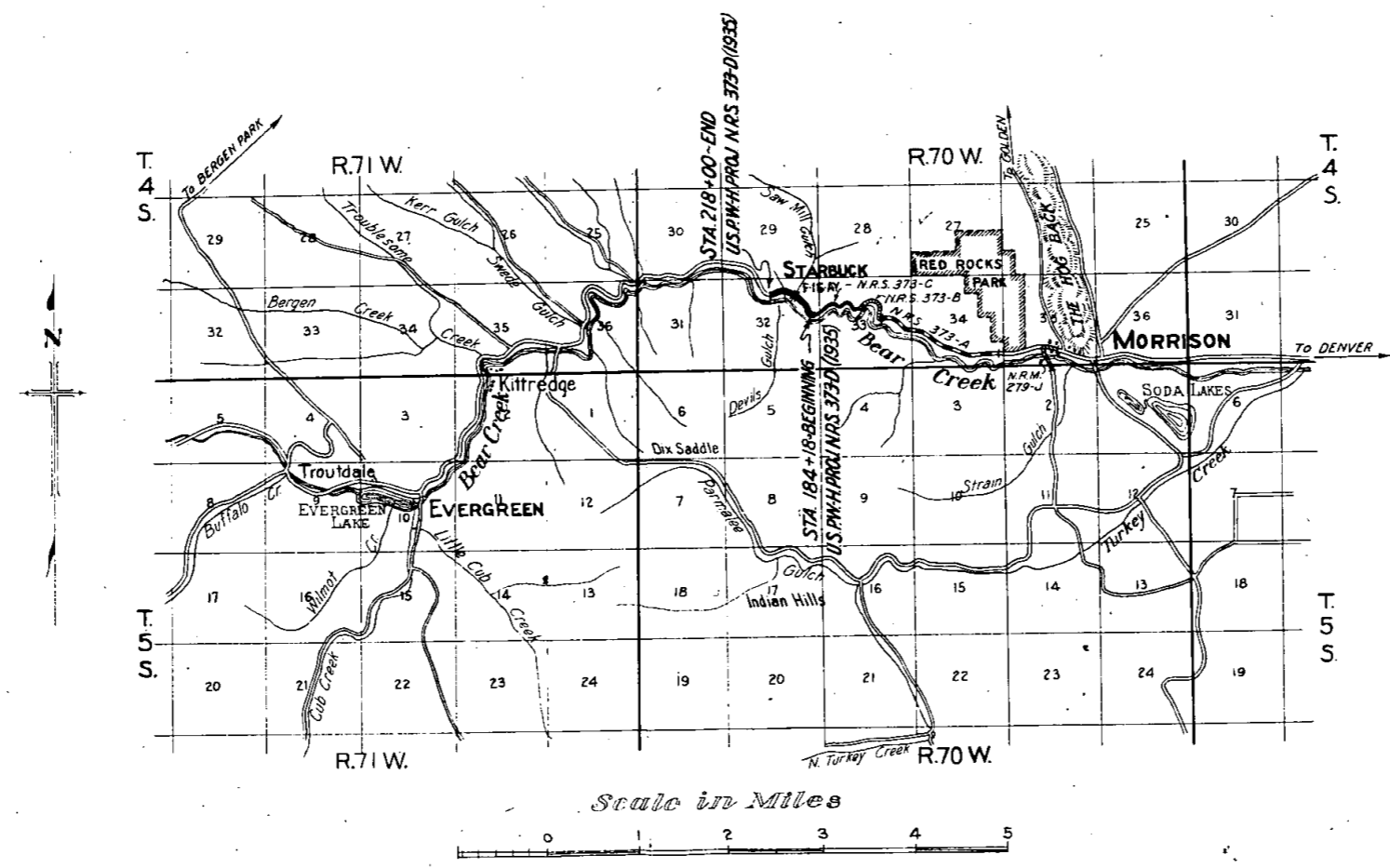
## STATE HIGHWAY DEPARTMENT

### PLAN AND PROFILE OF PROPOSED U.S.P.W. HIGHWAY PROJECT N.R.S. 373-D (1935) STATE HIGHWAY NO. 74 JEFFERSON COUNTY

SCALES ON ORIGINAL TRACINGS  
 ON PLAN, 1 IN. = 50 FT.  
 ON PROFILE { 1 IN. = 50 FT. HORIZONTAL  
 1 IN. = 10 FT. VERTICAL  
 GRADE LINE ON PROFILE IS SHOWN AS GRADE OF FINISHED ROAD  
 GROSS LENGTH OF PROJECT } 3380.0 FT. = 0.640 MI.  
 NET LENGTH OF PROJECT }

### RIGHT OF WAY

INFORMATION OBTAINED FROM AVAILABLE COUNTY RECORDS.



# JEFFERSON COUNTY

FED. ROAD DIST. NO.	STATE	U.S.R.W. PROJ. NO.	SHEET NO.	TO SHE
3	COLO.	N.R.S. 373 D 1935	2	5

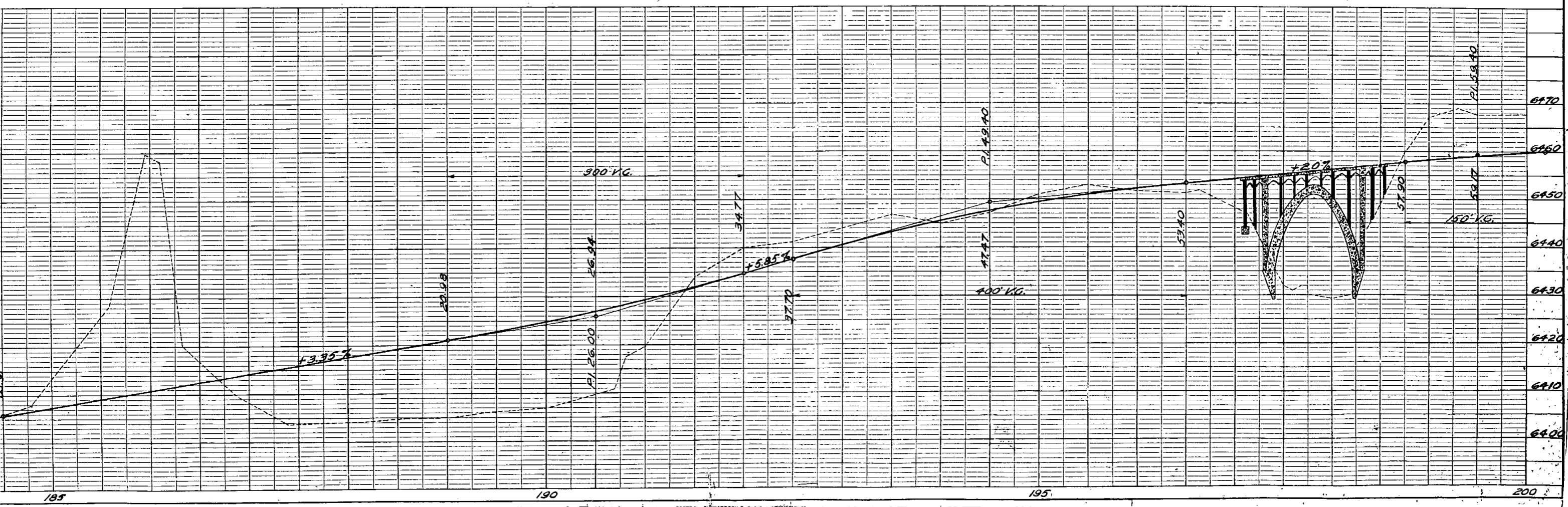
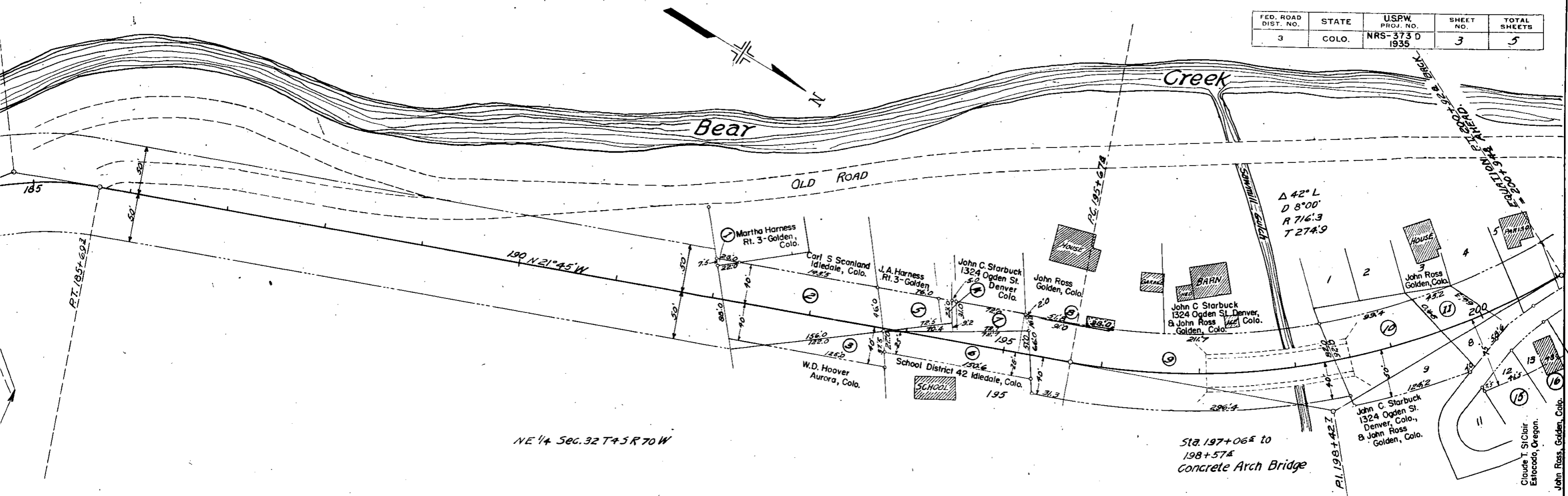
OWNER	LOCATION	AREA IN ACRES		ASSESSED VALUE			REMARKS
		TOTAL	REQ'D.	IMP'MS	LAND	PARCEL	
Harness, Rt. 3, Golden, Colo.	NE 1/4 32-4-70	0.131	0.0002				
Scanland, Idledale, Colo.	NE 1/4 32 4 70	0.413	0.250		70.00	1.00	Encumbrancer, Edgar M. or Rosa W. Cosner.
Over, Receiver, First Nat'l. Bank, Aurora, Colo.	NE 1/4 32 4 70	9.00	0.054		70.00	42.00	" Sarah L. Scanland.
Starbuck, 1324 Ogden St., Denver, Colo.	NE 1/4 32 4 70	2.85	0.007		320.00	2.00	" W.B. Barger, Idledale, Colo.
Harness, Rt. 3, Golden, Colo.	NE 1/4 32 4 70	0.241	0.056		40.00	1.00	" Arthur D. Quaintance, Golden, Colo.
Dist. No. 42, Idledale, Colo. % Maurice Peter, Idledale, Colo.	NE 1/4 32 4 70	1.29	0.124		40.00	10.00	" None
Starbuck, 1324 Ogden St., Denver, Colo. & John Ross, Golden, Colo.	NE 1/4 32 4 70	2.85	0.039		40.00	1.00	" None
Starbuck, 1324 Ogden St., Denver, Colo. & John Ross, Golden, Colo.	NE 1/4 32 4 70	0.64	0.004		320.00	2.00	" Arthur D. Quaintance, Golden, Colo.
Starbuck, 1324 Ogden St., Denver, Colo. & John Ross, Golden, Colo.	NE 1/4 32 4 70	2.85	0.586		40.00	8.00	" None
Starbuck, 1324 Ogden St., Denver, Colo. & John Ross, Golden, Colo.	Lot 9, Starbuck Heights	0.330	0.240		70.00	51.00	" Arthur D. & Mary Ross Quaintance, Golden, Colo.
Starbuck, 1324 Ogden St., Denver, Colo. & John Ross, Golden, Colo.	Lot 8 " "	0.095	0.091		70.00	68.00	" " " " " " " " " "
Starbuck, 1324 Ogden St., Denver, Colo. & John Ross, Golden, Colo.	Lot 4 " "	0.173	0.053		30.00	9.00	" None
Starbuck, 1324 Ogden St., Denver, Colo. & John Ross, Golden, Colo.	Lot 5 " "	0.138	0.060		80.00	35.00	" " " " " " " " " "
Starbuck, 1324 Ogden St., Denver, Colo. & John Ross, Golden, Colo.	Lot 6 " "	0.107	0.056	80.00	30.00	96.00	" " " " " " " " " "
Starbuck, 1324 Ogden St., Denver, Colo. & John Ross, Golden, Colo.	Lot 7 " "	0.062	0.040		20.00	13.00	" " " " " " " " " "
Starbuck, 1324 Ogden St., Denver, Colo. & John Ross, Golden, Colo.	Lot 12 " "	0.081	0.017		30.00	6.00	" " " " " " " " " "
Starbuck, 1324 Ogden St., Denver, Colo. & John Ross, Golden, Colo.	Lot 13 " "	0.118	0.041	320.00	70.00	344.00	" " " " " " " " " "
Starbuck, 1324 Ogden St., Denver, Colo. & John Ross, Golden, Colo.	Lot 14 " "	0.130	0.051		40.00	16.00	" Levina E. Baker, Cliff Hotel, 1723 Stout St., Denver, Colo.
Starbuck, 1324 Ogden St., Denver, Colo. & John Ross, Golden, Colo.	Lot 15 " "	0.089	0.049	350.00	40.00	372.00	" None
Starbuck, 1324 Ogden St., Denver, Colo. & John Ross, Golden, Colo.	Lot 35 " "	0.145	0.040	675.00	25.00	682.00	" Margaret Stewart, Denver, Colo.
Starbuck, 1324 Ogden St., Denver, Colo. & John Ross, Golden, Colo.	Lot 35 " "	0.459	0.379		30.00	25.00	" None
Starbuck, 1324 Ogden St., Denver, Colo. & John Ross, Golden, Colo.	Lot 36 " "	0.231	0.010		20.00	1.00	" " " " " " " " " "
Starbuck, 1324 Ogden St., Denver, Colo. & John Ross, Golden, Colo.	Lot 349 " "	0.067	0.056		50.00	42.00	" " " " " " " " " "
Starbuck, 1324 Ogden St., Denver, Colo. & John Ross, Golden, Colo.	Lots 352-3 " "	0.207	0.102		100.00	49.00	" American Industrial Bank, 213 Boston Bldg., Globe Casket Mf. Co., 1315-23'd St., Denver, Colo.
Starbuck, 1324 Ogden St., Denver, Colo. & John Ross, Golden, Colo.	Lot 351 " "	0.094	0.018		50.00	10.00	" " " " " " " " " "
Starbuck, 1324 Ogden St., Denver, Colo. & John Ross, Golden, Colo.	Lot 343 " "	0.090	0.090		9.00	9.00	" Clayton Ryan
Starbuck, 1324 Ogden St., Denver, Colo. & John Ross, Golden, Colo.	Lot 344 " "	0.096	0.096		40.00	40.00	" Arthur D. Quaintance, Golden, Colo., Esther M. Christensen & Harry C. Haynes, 104 Bro'dy, Denver, Colo.
Starbuck, 1324 Ogden St., Denver, Colo. & John Ross, Golden, Colo.	Lot 341 " "	0.113	0.089		40.00	31.00	" None
Starbuck, 1324 Ogden St., Denver, Colo. & John Ross, Golden, Colo.	Lot 339 " "	0.115	0.061		40.00	21.00	" " " " " " " " " "
Starbuck, 1324 Ogden St., Denver, Colo. & John Ross, Golden, Colo.	Lot 320 " "	0.128	0.002		40.00	1.00	" " " " " " " " " "
Starbuck, 1324 Ogden St., Denver, Colo. & John Ross, Golden, Colo.	Lot 322 " "	0.197	0.122		38.00	23.00	" " " " " " " " " "
Starbuck, 1324 Ogden St., Denver, Colo. & John Ross, Golden, Colo.	Lots 323-4-5-6 Starbuck Heights	0.619	0.287		160.00	72.00	" Arthur D. Quaintance, Golden, Colo., N. Ellen Gorich, Contract to purchase.
Starbuck, 1324 Ogden St., Denver, Colo. & John Ross, Golden, Colo.	Lots 336-7 " "	0.179	0.044	970.00	60.00	984.00	" None
Starbuck, 1324 Ogden St., Denver, Colo. & John Ross, Golden, Colo.	Lot 335-6 " "	0.113	0.008		70.00	5.00	" " " " " " " " " "
Starbuck, 1324 Ogden St., Denver, Colo. & John Ross, Golden, Colo.	Lot 327 " "	0.124	0.078		40.00	25.00	" Ernst Braun
Starbuck, 1324 Ogden St., Denver, Colo. & John Ross, Golden, Colo.	Lot 328-9 " "	0.364	0.345		75.00	71.00	" None
Starbuck, 1324 Ogden St., Denver, Colo. & John Ross, Golden, Colo.	Lot 330 " "	0.189	0.189		40.00	40.00	" Arthur D. Quaintance, Golden, Colo.
Starbuck, 1324 Ogden St., Denver, Colo. & John Ross, Golden, Colo.	Lots 331-2-3 " "	0.550	0.550		120.00	120.00	" None
Starbuck, 1324 Ogden St., Denver, Colo. & John Ross, Golden, Colo.	Lot 334 " "	0.151	0.151		45.00	45.00	" " " " " " " " " "
Starbuck, 1324 Ogden St., Denver, Colo. & John Ross, Golden, Colo.	Lots 1-2-3-6 Block 1	0.716	0.716		230.00	230.00	" " " " " " " " " "
Starbuck, 1324 Ogden St., Denver, Colo. & John Ross, Golden, Colo.	Lots 4-5 Block 1	0.339	0.339		40.00	40.00	" " " " " " " " " "
Starbuck, 1324 Ogden St., Denver, Colo. & John Ross, Golden, Colo.	Lots 7-8 Block 1	0.364	0.364	390.00	80.00	470.00	" " " " " " " " " "
Starbuck, 1324 Ogden St., Denver, Colo. & John Ross, Golden, Colo.	Tract West of Lot 8, Block 1	0.256	0.256	170.00	50.00	220.00	" Otto & Kate Boettcher.
Starbuck, 1324 Ogden St., Denver, Colo. & John Ross, Golden, Colo.	Lot 5, Starbuck Ranch Heights	0.076	0.010		17.00	3.00	" " " " " " " " " "
Starbuck, 1324 Ogden St., Denver, Colo. & John Ross, Golden, Colo.	Ea. 90ft. Lot 5, Starbuck Ranch Hg'ts.	0.269	0.028		70.00	6.00	" Arthur D. Quaintance, Golden, Colo.
Starbuck, 1324 Ogden St., Denver, Colo. & John Ross, Golden, Colo.	Lots 6-7, Ea. 25ft. of Lot 8- S.R.H.	0.312	0.059		160.00	30.00	" Sarah L. Scanland.
Starbuck, 1324 Ogden St., Denver, Colo. & John Ross, Golden, Colo.	West 50ft. of Lot 8- S.R.H.	0.126	0.027		65.00	14.00	" None
Starbuck, 1324 Ogden St., Denver, Colo. & John Ross, Golden, Colo.	W 60ft. of Ea. 75ft. & Ea. 15ft., Lot 9	0.258	0.041		55.00	9.00	" " " " " " " " " "
Starbuck, 1324 Ogden St., Denver, Colo. & John Ross, Golden, Colo.	W 75ft., Lot 9 Starbuck Ranch Hg'ts.	0.269	0.025		50.00	5.00	" Zoe Ruff, (M
Starbuck, 1324 Ogden St., Denver, Colo. & John Ross, Golden, Colo.	Ea. 1/2 Lot 10 " " "	0.183	0.010		40.00	2.00	" Mrs. Lawrence, Mrs. White, R.A. Hamack hold W.D., Delia N. Harris holds release of TD 350-25
Starbuck, 1324 Ogden St., Denver, Colo. & John Ross, Golden, Colo.	W 1/2 Lot 10 " " "	0.195	0.006		40.00	1.00	" Delia N. Harris, release of T.D. 350-25. Join Elmore D. Currier.
Starbuck, 1324 Ogden St., Denver, Colo. & John Ross, Golden, Colo.	Lot 11 & Ea. 17ft. of Lot 12 S.R.H.	0.283	0.003		90.00	1.00	" None
Starbuck, 1324 Ogden St., Denver, Colo. & John Ross, Golden, Colo.	Lots 14-15, Starbuck Ranch Heights	0.315	0.057		140.00	25.00	" Otto & Kate Boettcher
Starbuck, 1324 Ogden St., Denver, Colo. & John Ross, Golden, Colo.	W 33ft. Lot 12 " " "	0.155	0.004		40.00	1.00	" " " " " " " " " "
Starbuck, 1324 Ogden St., Denver, Colo. & John Ross, Golden, Colo.	Lot 13 " " "	0.103	0.010		40.00	4.00	" " " " " " " " " "
Starbuck, 1324 Ogden St., Denver, Colo. & John Ross, Golden, Colo.	Lots 16-17 " " "	0.433	0.072		140.00	23.00	" " " " " " " " " "
Starbuck, 1324 Ogden St., Denver, Colo. & John Ross, Golden, Colo.	Lot 18 " " "	0.149	0.027	290.00	80.00	305.00	" " " " " " " " " "
Starbuck, 1324 Ogden St., Denver, Colo. & John Ross, Golden, Colo.	Lot 19 " " "	0.132	0.021	180.00	80.00	193.00	" None
Starbuck, 1324 Ogden St., Denver, Colo. & John Ross, Golden, Colo.	Lots 20-21 " " "	0.182	0.025		50.00	7.00	" " " " " " " " " "
Starbuck, 1324 Ogden St., Denver, Colo. & John Ross, Golden, Colo.	Lots 22-23 " " "	0.226	0.024	220.00	80.00	230.00	" Arthur D. Quaintance, Golden, Colo.
Starbuck, 1324 Ogden St., Denver, Colo. & John Ross, Golden, Colo.	NE 1/4 (tract) 32 4 70	40.000	1.110		190.00	5.00	" None

# JEFFERSON COUNTY

FED. ROAD DIST. NO.	STATE	U. P.
3	COLO.	N.R.

NO	OWNER	LOCATION	AREA IN ACRES		ASSESSED VALUE			REMARKS
			TOTAL	REQ'D.	IMP'MS	LAND	PARCEL	
1	Martha Harness, Rt. 3, Golden, Colo.	NE 1/4 32-4-70	0.131	0.0002		70.00	1.00	Encumbrancer, Edgar M. or Rosa W. Cosner.
2	Carl S. Scanland, Idledale, Colo.	NE 1/4 32 4 70	0.413	0.250		70.00	42.00	" Sarah L. Scanland.
3	W.D. Hbover, Receiver, First Nat'l. Bank, Aurora, Colo.	NE 1/4 32 4 70	9.00	0.054		320.00	2.00	" W.B. Berger, Idledale, Colo.
4	John C. Starbuck, 1324 Ogden St., Denver, Colo.	NE 1/4 32 4 70	2.85	0.007		40.00	1.00	" Arthur D. Quaintance, Golden, Colo.
5	J.A. Harness, Rt. 3, Golden, Colo.	NE 1/4 32 4 70	0.241	0.056		40.00	10.00	" None
6	School Dist. No. 42, Idledale, Colo. % Maurice Peter, Idledale, Colo.	NE 1/4 32 4 70	1.29	0.124		None		" None
7	John C. Starbuck, 1324 Ogden St., Denver, Colo. & John Ross, Golden.	NE 1/4 32 4 70	2.85	0.039		40.00	1.00	" Arthur D. Quaintance, Golden, Colo.
8	John Ross, Golden, Colo.	NE 1/4 32 4 70	0.64	0.004		320.00	2.00	" None
9	John C. Starbuck, 1324 Ogden St., Denver, Colo. & John Ross, Golden.	NE 1/4 32 4 70	2.85	0.586		40.00	8.00	" Arthur D. & Mary Ross Quaintance, Golden, Colo.
10	John C. Starbuck, 1324 Ogden St., Denver, Colo. & John Ross, Golden.	Lot 9, Starbuck Heights	0.330	0.240		70.00	51.00	" " " " " " " " " "
11	John Ross, Golden, Colo.	Lot 8 " "	0.095	0.091		70.00	68.00	" None
12	G.E. Arnold, Watseka, Illinois.	Lot 4 " "	0.173	0.053		30.00	9.00	" "
13	Wm. A. & Nettie B. Vickers, Idledale, Colo.	Lot 5 " "	0.138	0.060		80.00	35.00	" "
14	John Ross, Golden, Colo.	Lot 6 " "	0.107	0.056	80.00	30.00	96.00	" "
	" " " " " " " " " "	Lot 7 " "	0.062	0.040		20.00	13.00	" "
15	Claude T. St. Clair, Estocoda, Oregon.	Lot 12 " "	0.081	0.017		30.00	6.00	" "
16	John Ross, Golden, Colo.	Lot 13 " "	0.118	0.041	320.00	70.00	344.00	" Levina E. Baker, Cliff Hotel, 1723 Stout St., Denver, Colo.
17	Florence M. Liljenstolpe, 4568 Newton St., Denver, Colo.	Lot 14 " "	0.130	0.051		40.00	16.00	" None
18	Harvie B. Duval, 3782 Stuart St., Denver, Colo.	Lot 15 " "	0.089	0.049	350.00	40.00	372.00	" Margaret Stewart, Denver, Colo.
19	Wm. E. & Laura E. Fitzgerald, 4884 Lowell Blvd., Denver, Colo.	Lot 35 " "	0.145	0.040	675.00	25.00	682.00	" None
20	Albert J. Snyder, P.O. Box No. 1, Idledale, Colo.	Lot 35 " "	0.459	0.379		30.00	25.00	" "
21	" " " " " " " " " "	Lot 36 " "	0.231	0.010		20.00	1.00	" "
22	Rex B. Yeager, 213 Boston Bldg., Denver, Colo.	Lot 349 " "	0.067	0.056		50.00	42.00	" American Industrial Bank, 213 Boston Bldg. - Globe Casket Mf. Co., 1315-23'd St., Denver, Colo.
23	" " " " " " " " " "	Lots 352-3 " "	0.207	0.102		100.00	49.00	" " " " " " " " " "
24	Miss Julia Hutchmaker, 1937 Washington St., Murphysboro, Illinois.	Lot 351 " "	0.094	0.018		50.00	10.00	" Clayton Ryan
25	John C. Starbuck, 1324 Ogden St., Denver, Colo.	Lot 343 " "	0.090	0.090		9.00	9.00	" Arthur D. Quaintance, Golden, Colo., Esther M. Christensen & Harry C. Haynes, 104 Bro'dy, Denver, Colo.
26	Esther Marie Christensen & Harry Clay Haynes, 104 Broadway, Denver, Colo.	Lot 344 " "	0.096	0.096		40.00	40.00	" None
27	J.D. Laughlin, 61 Exchange Place, Salt Lake City, Utah.	Lot 341 " "	0.113	0.089		40.00	31.00	" "
28	Miss Lenora Klatt, Idledale, Colo.	Lot 339 " "	0.115	0.061		40.00	21.00	" "
29	B. C. Jones, 430 University Bldg. Denver, Colo.	Lot 320 " "	0.128	0.002		40.00	1.00	" "
30	John C. Starbuck, 1324 Ogden St., Denver, Colo.	Lot 322 " "	0.197	0.122		38.00	23.00	" Arthur D. Quaintance, Golden, Colo., N. Ellen Gorich, Contract to purchase.
31	J.N. Andrews, 1324 Ogden St., Denver, Colo.	Lots 323-4-5-6 Starbuck Heights	0.619	0.287		160.00	72.00	" None
32	O. J. Klatt, Idledale, Colo.	Lots 336-7 " "	0.179	0.044	970.00	60.00	984.00	" "
33-4	Earl J. & Dora Mason, Idledale, Colo.	Lot 335-6 " "	0.113	0.008		70.00	5.00	" Ernst Braun
35	J.N. Andrews, 1324 Ogden St., Denver, Colo.	Lot 327 " "	0.124	0.078		40.00	25.00	" None
36-7	John C. Starbuck, 1324 Ogden St., Denver, Colo.	Lot 328-9 " "	0.364	0.345		75.00	71.00	" Arthur D. Quaintance, Golden, Colo.
38	Mr. & Mrs. C. C. Dawson, Keota, Iowa.	Lot 330 " "	0.189	0.189		40.00	40.00	" None
39	J.N. Andrews, 1324 Ogden St., Denver, Colo.	Lots 331-2-3 " "	0.550	0.550		120.00	120.00	" "
40	The Liberal Church Inc. 1825 1/2 Larimer St., Denver, Colo.	Lot 334 " "	0.151	0.151		45.00	45.00	" "
41	Mary E. Heath or Prun, 3241 Zuni St., Denver, Colo.	Lots 1-2-3-6 Block 1	0.716	0.716		230.00	230.00	" " " " " " " " " "
42	Harry K. & Virginia Boone, 1st Nat'l. Bank Bldg., Culver City, California.	Lots 4-5 Block 1	0.339	0.339		40.00	40.00	" " " " " " " " " "
43	Sherman G. Miller, Idledale, Colo.	Lots 7-8 Block 1	0.364	0.364	390.00	80.00	470.00	" Otto & Kate Boettcher.
43A	" " " " " " " " " "	△ Tract West of Lot 8, Block 1	0.256	0.256	170.00	50.00	220.00	" " " " " " " " " "
44	John C. Starbuck, 1324 Ogden St., Denver, & Carl Scanland, Idledale.	Lot 5, Starbuck Ranch Heights.	0.076	0.010		17.00	3.00	" Arthur D. Quaintance, Golden, Colo.
45	Carl S. Scanland, Idledale, Colo.	Ea. 90ft. Lot 5, Starbuck Ranch Hg'ts.	0.269	0.028		70.00	6.00	" Sarah L. Scanland.
46	Estate of J.J. Wafer (deceased) 1758 Humboldt St., Denver, Colo.	Lots 6-7, Ea. 25ft. of Lot 8- S.R.H.	0.312	0.059		160.00	30.00	" None
47	Delia M. or N. Harris, 1332 St. Paul Street, Denver, Colo.	West 50ft. of Lot 8- S.R.H.	0.126	0.027		65.00	14.00	" "
48	Delia M. & Wm. G. Harris, 1332 St. Paul Street, Denver, Colo.	W 60ft. of Ea. 75ft. & Ea. 15ft. Lot 9	0.258	0.041		55.00	9.00	" Zoe Ruff, (M
49	Mrs. Agnes Lawrence & Mrs. Mary White, 534 So. Wash. St. Denver, Colo.	W 75ft., Lot 9 Starbuck Ranch Hg'ts.	0.269	0.025		50.00	5.00	" Mrs. Lawrence, Mrs. White, R.A. Hamack hold W.D., Delia N. Harris holds release of TD 350-25
50	R.A. Hamack, Idledale, Colo.	Ea. 1/2 Lot 10 " " "	0.183	0.010		40.00	2.00	" Delia N. Harris, release of T.D. 350-25. Join Elmore D. Currier.
51	Elmore D. or E.D. Currier, Box 136 University Place, Lincoln, Nebraska.	W 1/2 Lot 10 " " "	0.195	0.006		40.00	1.00	" None
52	S. C. & Ida B. Miller, Idledale, Colo.	Lot 11 & Ea. 17ft. of Lot 12 S.R.H.	0.283	0.003		90.00	1.00	" Otto & Kate Boettcher
53	" " " " " " " " " "	Lots 14-15, Starbuck Ranch Heights	0.315	0.057		140.00	25.00	" " " " " " " " " "
54	" " " " " " " " " "	W 33ft. Lot 12 " " "	0.155	0.004		40.00	1.00	" " " " " " " " " "
55	S. G. Miller, Idledale, Colo.	Lot 13 " " "	0.103	0.010		40.00	4.00	" " " " " " " " " "
56	S. G. & Ida B. Miller, Idledale, Colo.	Lots 16-17 " " "	0.433	0.072		140.00	23.00	" " " " " " " " " " & Naomi B. Daniels - Purchase contract.
57	Harry W. Risley, 9 East 1st Ave., Denver, Colo.	Lot 18 " " "	0.149	0.027	290.00	80.00	305.00	" None
58	Rose Roloff Bradley, 1574 So. Pennsylvania St., Denver, Colo.	Lot 19 " " "	0.132	0.021	180.00	80.00	193.00	" "
59	John C. Starbuck, 1324 Ogden St., Denver, Colo.	Lots 20-21 " " "	0.182	0.025		50.00	7.00	" Arthur D. Quaintance, Golden, Colo.
60	John Ross, Golden, Colo.	Lots 22-23 " " "	0.226	0.024	220.00	80.00	230.00	" None
61	Chas. J. Stromberg, 430 So. Clark St., Chicago, Illinois.	NE 1/4 (tract) 32 4 70	40.000	1.110		190.00	5.00	" "

FED. ROAD DIST. NO.	STATE	USPW PROJ. NO.	SHEET NO.	TOTAL SHEETS
3	COLO.	NRS-373 D 1935	3	5



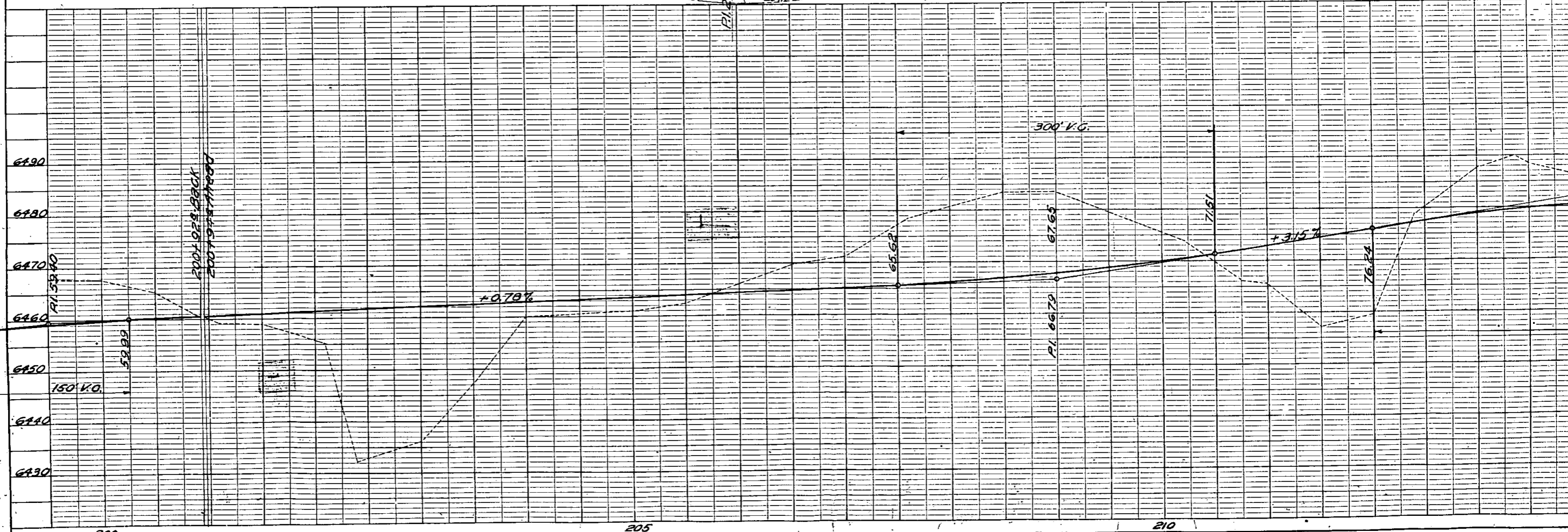
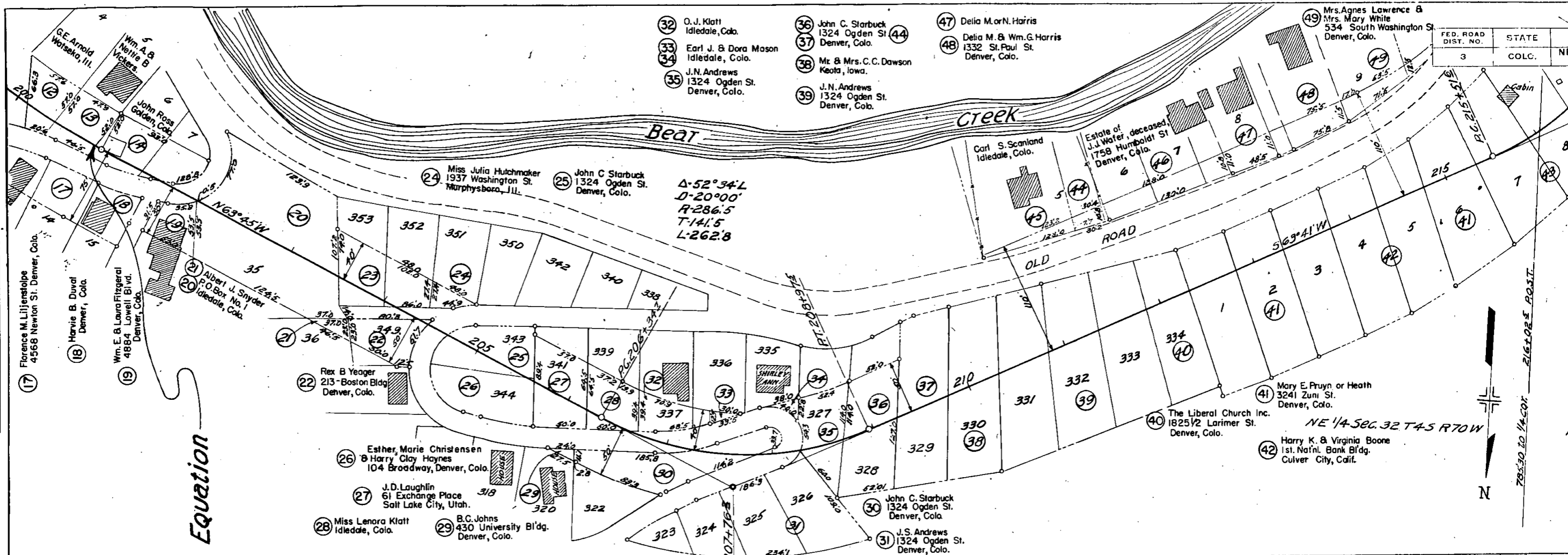




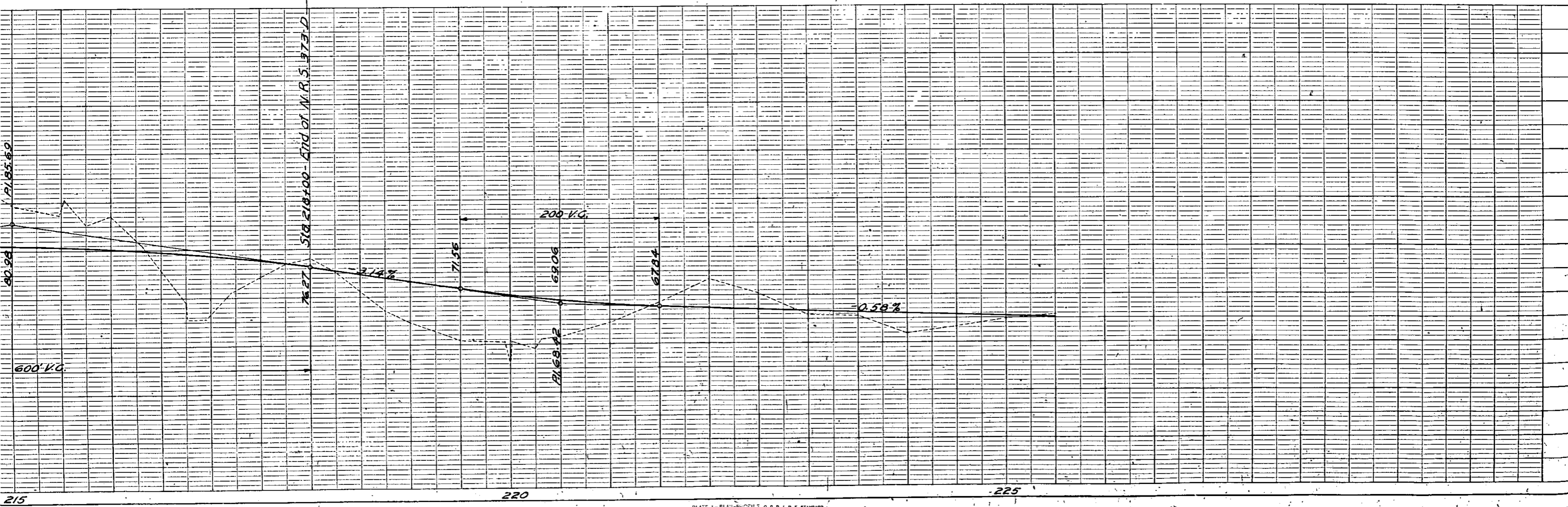
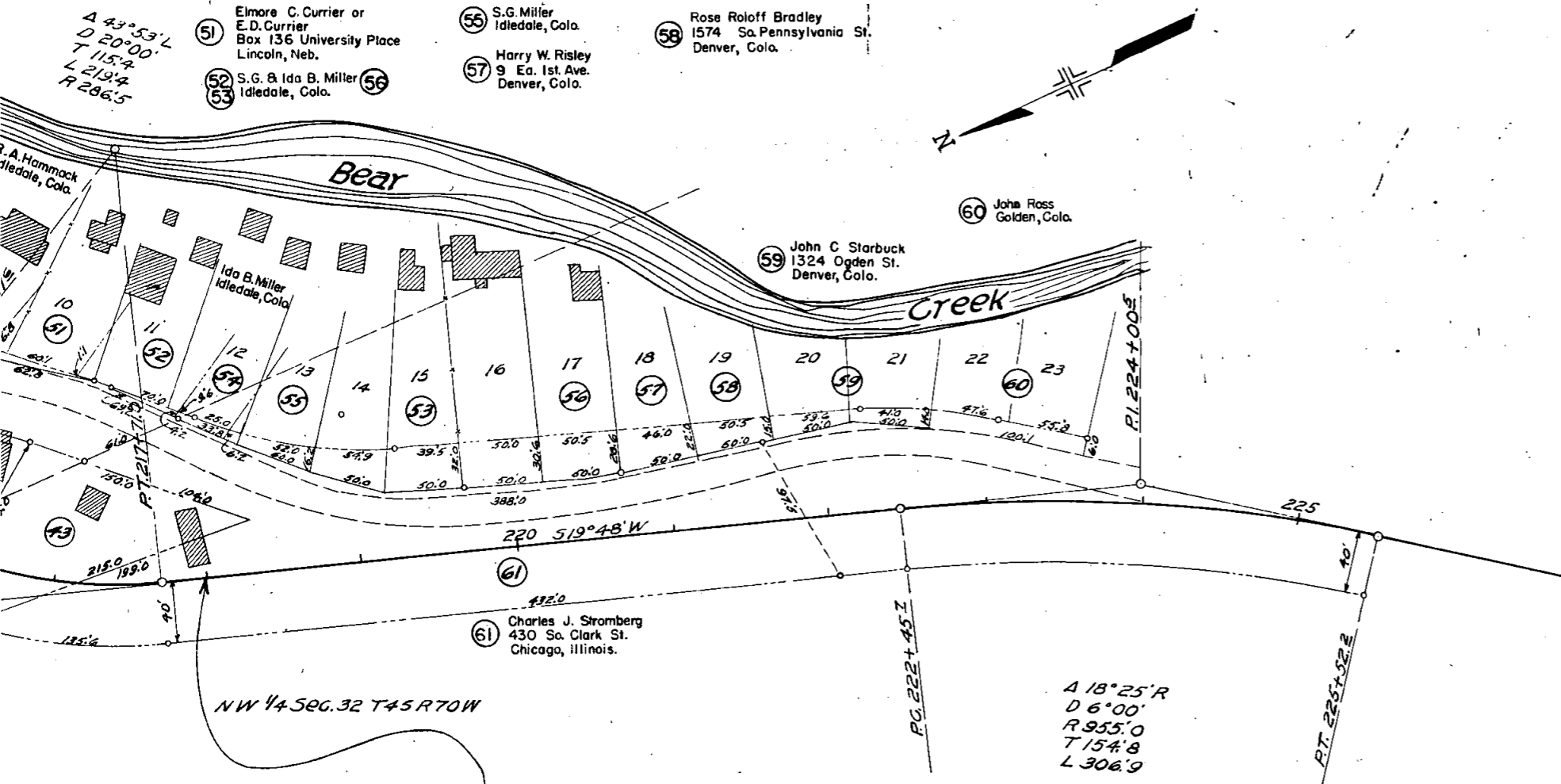
PLAN SURVEYED BY DATE  
 PLOTTED BY  
 NOTE BOOK NO. ALIGNMENT CHECKED BY  
 RT. OF WAY CHECKED BY

PROFILE SURVEYED BY DATE  
 PLOTTED BY  
 NOTE BOOK NO. GRADES CHECKED BY  
 E. MEAS. NOTED BY  
 STRUCTURE NOTATIONS BY

FED. ROAD DIST. NO.	STATE	NR
3	COLG.	NR



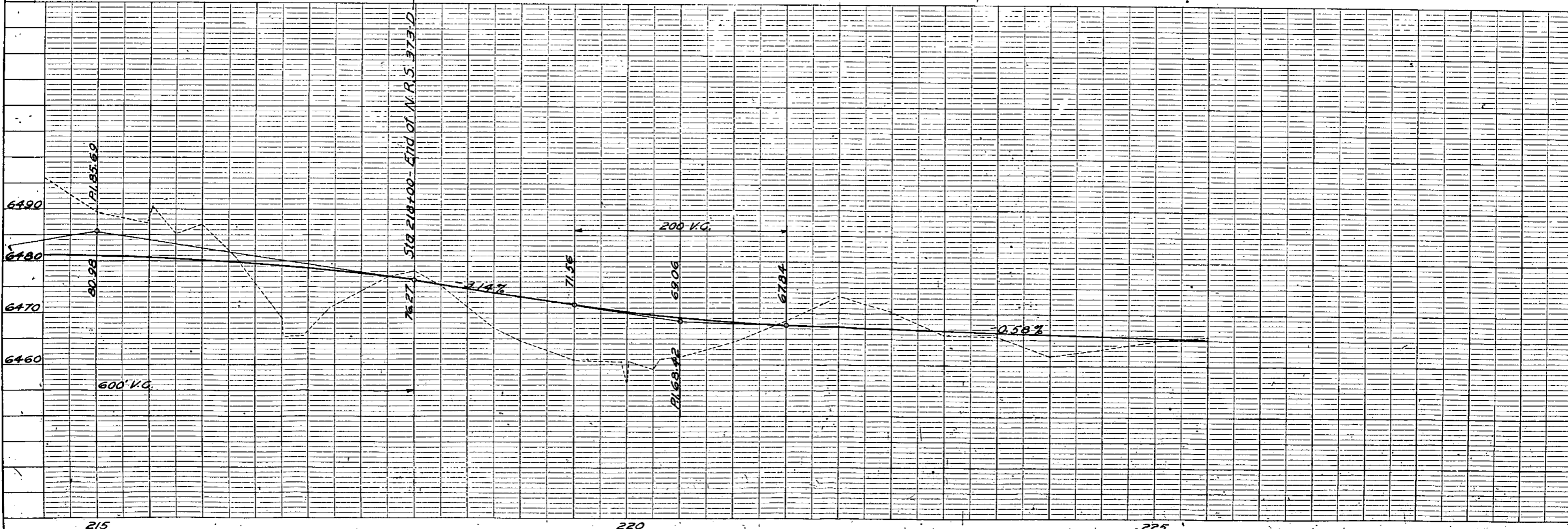
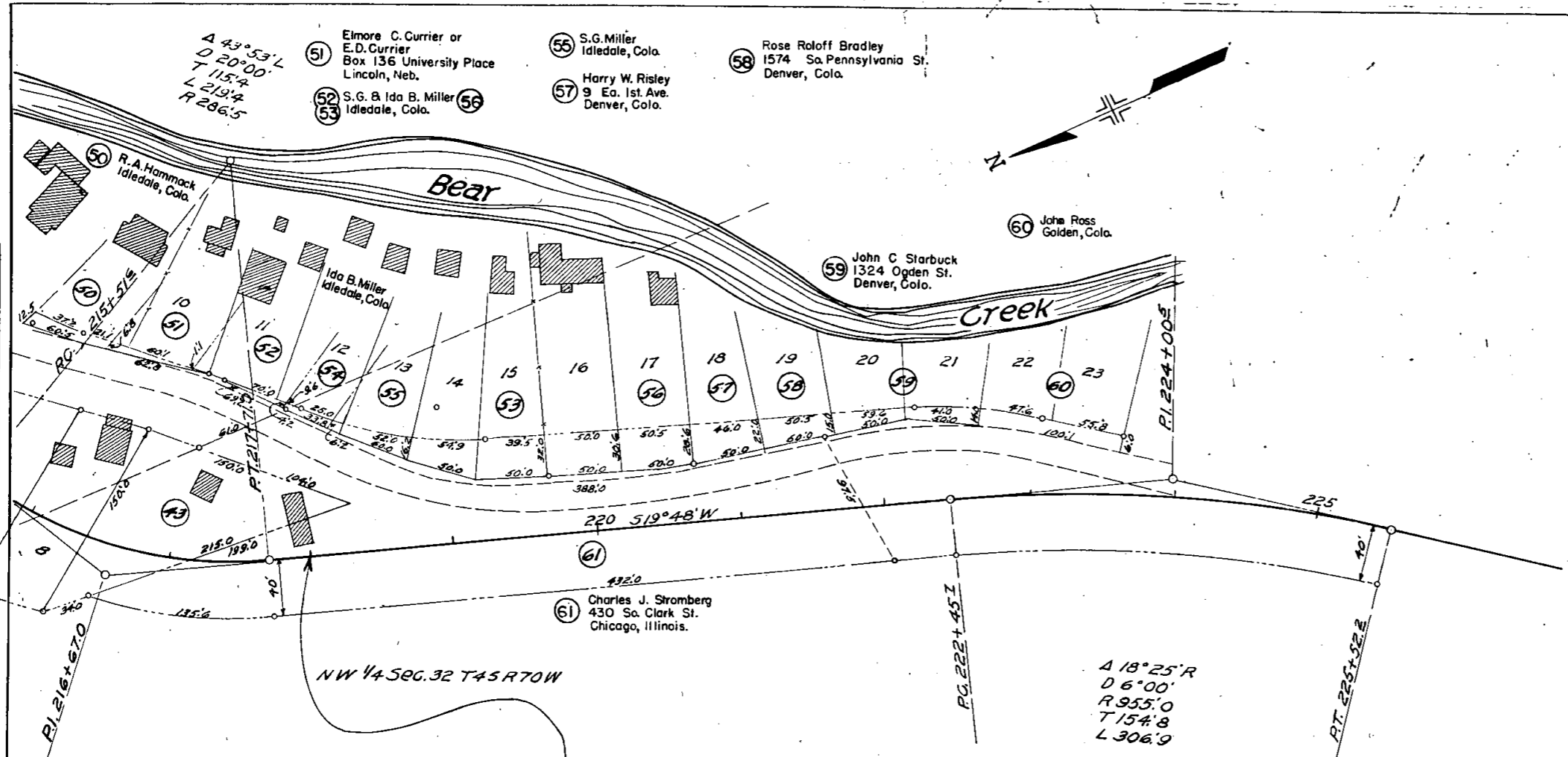
FED. ROAD DIST. NO.	STATE	USPW PROJ. NO.	SHEET NO.	TOTAL SHEETS
3	COLO.	NRS 373 D 1935	5	5



FED. ROAD DIST. NO.	STATE
3	COLO.

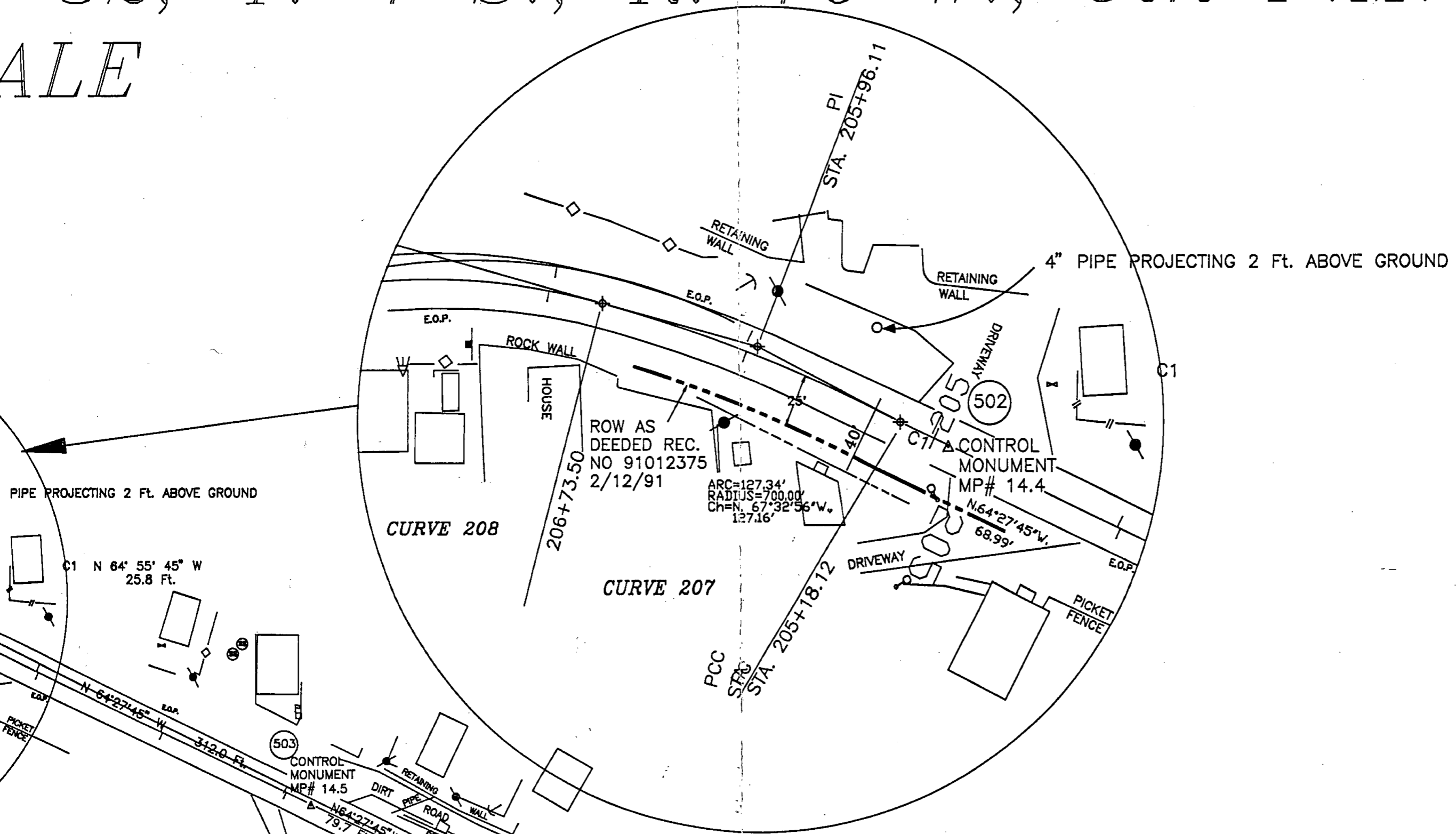
PLAN	SURVEYED	DATE
	PLOTTED	
	ALIGNMENT CHECKED	
	RT. OF WAY CHECKED	
	NOTE BOOK NO.	

PROFILE	SURVEYED	DATE
	PLOTTED	
	STRUCTURE NOTATIONS CHECKED	
	NO. 8 WAS NOTED	
	NO.	

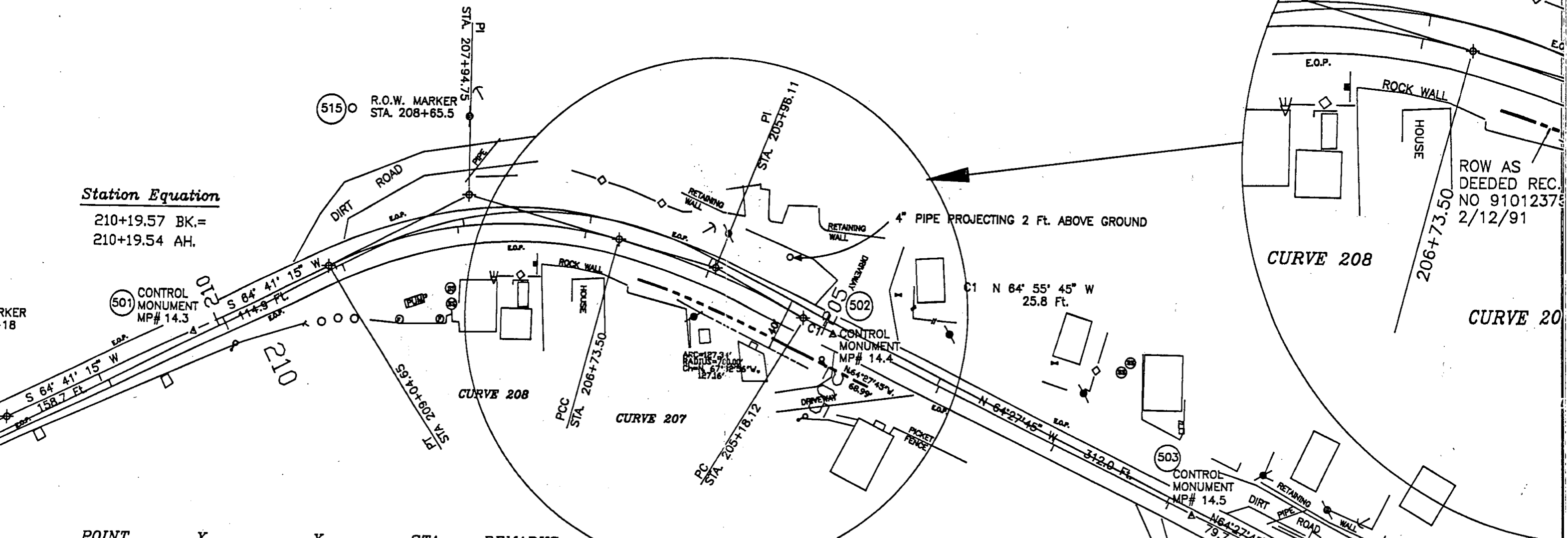


32, T. 4 S., R. 70 W., 6th P.M.

ALE



part of NE 1/4 Section 32, T. 4 S., R.  
TOWN of IDLEDALE



Station Equation

210+19.57 BK.=  
210+19.54 AH.

ROW AS  
DEEDED REC.  
NO 91012375  
2/12/91

MARKER  
18

POINT Y Y STA REMARKS



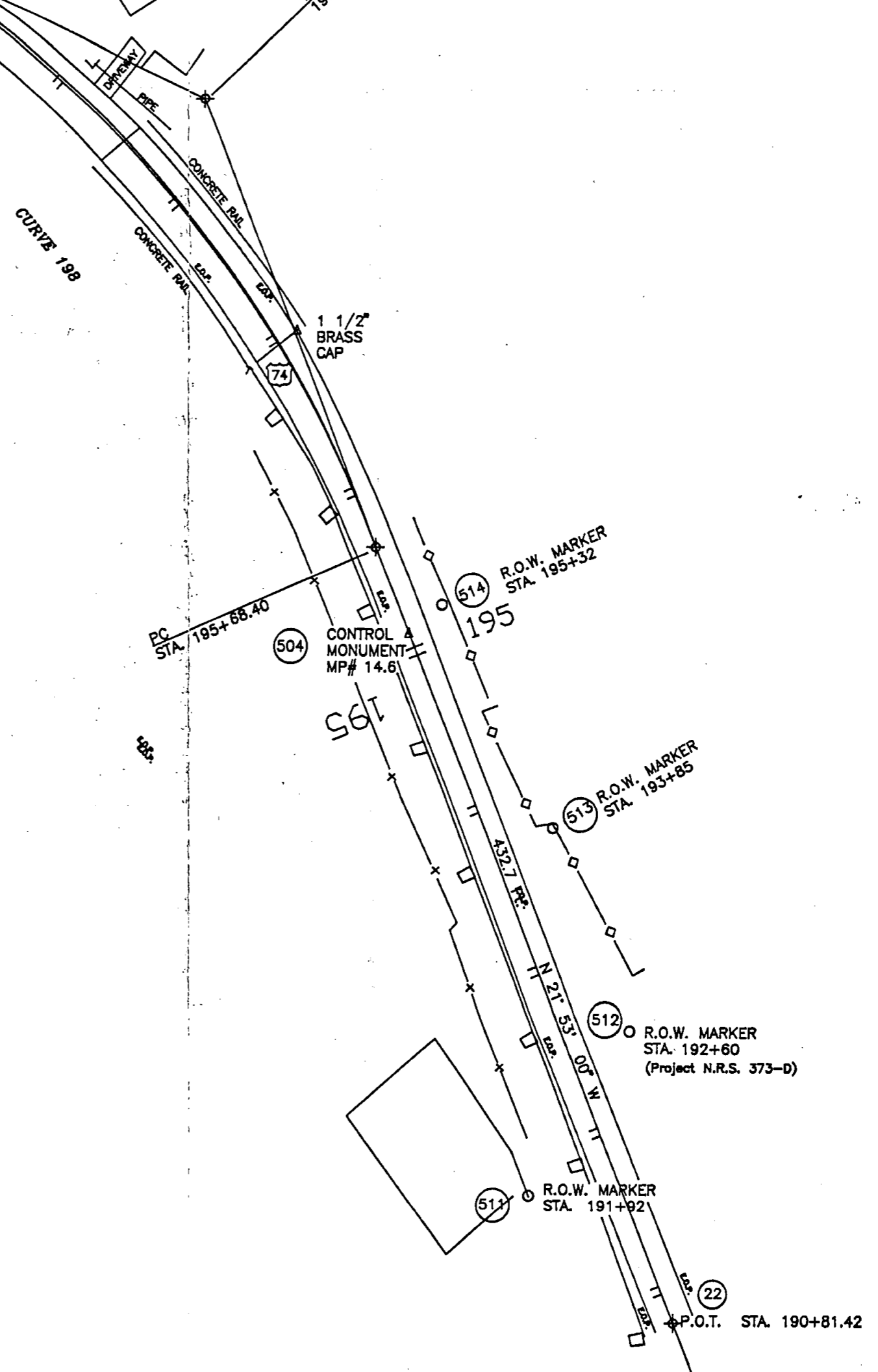
**CURVE 198**

CURVE 198	TYPE CIRCULAR CURVE	LEFT
BACK N 21. 53. 0.4	W AHEAD N 64. 27. 40.6	W DEFLECTION 42. 34. 40.2
CIRCULAR CURVE RADIUS	716.300	DELTA 42. 34. 40.2
DEGREE 7. 59. 55.9	LENGTH 532.299	
TANGENT (PC TO PI)	279.114	
TANGENT (PI TO PT)	279.114	
PNT PC 198	167259.010	73595.708
PNT PI 198	167518.012	73491.677
PNT CC 198	168992.031	72931.022
PNT PT 198	167638.344	73239.834
		195+68.40
		198+47.51
		201+00.70

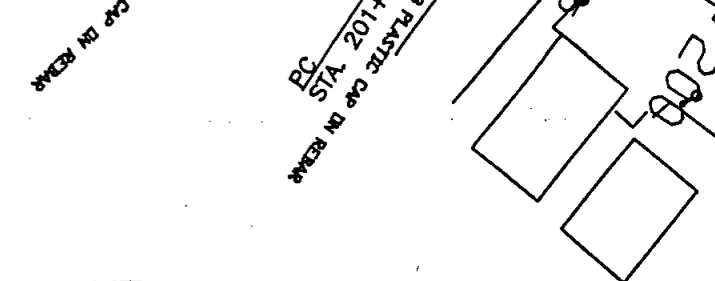
**LEGEND**

- - - COMBINATION FENCE
- x - x - BARBED WIRE FENCE
- ◊ - ◊ - CHAIN LINK FENCE
- - □ - GUARD RAIL
- E.P. — EDGE OF PAVEMENT
- ▲ CONTROL MONUMENT
- R.O.W. MARKER
- ⊙ SANITARY SEWER MANHOLE
- ⊙ UNDERGROUND FUEL TANK
- ⊙ PUMP ISLAND
- ⊙ POWER POLE W/ ANCHOR
- ∇ FLOOD OR SPOT LIGHT
- ⊥ SIGN
- ⊙ LIGHT STANDARD
- ⊥ WATER VALVE
- PHONE BOOTH
- ⊙ ELECTRICAL
- ⊙ PROPERTY PIN
- ⊕ FIRE HYDRANT

ORIGINAL SCALE  
ONE IN = 75 FT.



502	167807.205	72886.424	204+92.38	CONTROL MON. MP#14.4
501	167802.583	72390.113	210+19.54	CONTROL MON. MP#14.3
496	167734.701	72246.641	211+78.25	P.O.T. SHOT#1496



CURVE	LEFT		
HEAD S 62. 48. 55.1 W	DEFLECTION	42. 43. 25.5	
310.000 DELTA	42. 43. 25.5		
NGTH	231.158		
121.250			
121.250			
0	72718.667	206+73.50	
2	72601.849	207+94.75	
1	72635.620		
8	72493.993	209+04.85	

**CURVE 207**

CURVE 207	TYPE CIRCULAR CURVE	LEFT	
BACK N 62. 29. 52.8 W	AHEAD N 74. 46. 39.1 W	DEFLECTION	12. 16. 46.3
CIRCULAR CURVE RADIUS	725.000	DELTA	12. 16. 46.3
DEGREE	7. 54. 10.3	LENGTH	155.381
TANGENT (PC TO PI)	77.989		
TANGENT (PI TO PT)	77.989		
PNT PC 207	167818.119	72863.096	205+18.12
PNT PI 207	167854.133	72793.920	205+96.11
PNT CC 207	167175.048	72528.308	
PNT PT 207	167874.610	72718.667	206+73.50

**CURVE 198**

CURVE 198	TYPE CIRCULAR CURVE	LEFT	
BACK N 21. 53. 0.4 W	AHEAD N 64. 27. 40.6 W	DEFLECTION	42. 34. 40.2
CIRCULAR CURVE RADIUS	716.300	DELTA	42. 34. 40.2
DEGREE	7. 59. 55.9	LENGTH	532.299
TANGENT (PC TO PI)	279.114		
TANGENT (PI TO PT)	279.114		
PNT PC 198	167259.010	73595.708	195+68.40
PNT PI 198	167518.012	73491.677	198+47.51
PNT CC 198	166992.031	72931.022	
PNT PT 198	167638.344	73239.834	201+00.70

**GENERAL NOTES**

According to Colorado Law you commence any legal action based upon this survey within three years after you first discover such defect. In no event shall any action based upon any defect in this survey be commenced more than ten years after the date of the certification of this survey.

Stationing and offset stationing is shown only and may not represent the line as constructed in the field.

Coordinates listed are assumed to be State Plane coordinates. Points 501 through 504, 511 through 518 were assigned coordinates by multiplying State Plane coordinates by 1.00032524 then subtracting 500,000 from the X coordinate and 500,000 from the Y coordinate. The State Plane coordinates for these points were taken from the Jefferson County Mapping Department April 1990. The 500 series numbers are the same as those assigned by the Jefferson County Mapping Department.

Curve 198 is a tangential curve; Curve 207 and Curve 208 are non-tangential curves.

This plan does not show any recorded or unrecorded easements. Users of this plan are advised to be on the alert for the existence of any easements not shown.

Points 501, 502, 503 and 504 are Colorado State Highway 3 inch diameter aluminum rods. Points 505 through 508 are 3/8" aluminum rods in range boxes set on the centerline of State Highway 74.

*Basis of Bearings: All bearings based on the line from point 503 to 502 which bears N 64° 27' 45" W as calculated from the project coordinates of points 502 and 503.*

ORIGINAL SCALE  
ONE IN = 75 FT.

**SURVEYOR CERTIFICATE (FIELD)**

Control survey and monumentation was done under my supervision and checking.

Name \_\_\_\_\_ P.L.S. No. \_\_\_\_\_

Date \_\_\_\_\_

**SURVEYOR CERTIFICATE (OFFICE)**

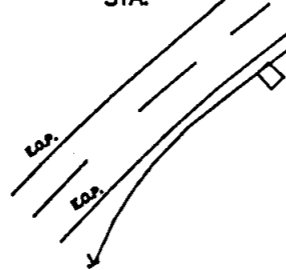
R.O.W. Plans and Legal Descriptions were prepared under my supervision and checking.

Name \_\_\_\_\_ P.L.S. No. \_\_\_\_\_

Date \_\_\_\_\_

**LEGEND**

- #- COMBINATION FENCE
- x-x- BARBED WIRE FENCE
- ◇-◇- CHAIN LINK FENCE
- GUARD RAIL
- E.O.P. — EDGE OF PAVEMENT
- △ CONTROL MONUMENT
- R.O.W. MARKER
- ⊙ SANITARY SEWER MANHOLE
- ⊙ UNDERGROUND FUEL TANK
- ⊙ PUMP ISLAND
- ← ⊙ POWER POLE W/ ANCHOR
- ∨ FLOOD OR SPOT LIGHT
- ⊥ SIGN
- ⊙ LIGHT STANDARD
- ∨ WATER VALVE
- PHONE BOOTH
- ⊥ ELECTRICAL
- ⊙ PROPERTY PIN
- ⊕ FIRE HYDRANT



**CURVE 208**

CURVE 208	TYPE CIRCULAR	CURVE	LEFT	
BACK N 74. 27. 39.4 W	AHEAD	S 62. 48. 55.1 W	DEFLECTION	42. 43. 25.5
CIRCULAR CURVE RADIUS		310.000	DELTA	42. 43. 25.5
DEGREE	18. 28. 57.0	LENGTH		231.158
TANGENT (PC TO PI)		121.250		
TANGENT (PI TO PT)		121.250		
PNT PC 208	167874.610	72718.667	206+73.50	
PNT PI 208	167907.092	72601.849	207+94.75	
PNT CC 208	167575.941	72635.620		
PNT PT 208	167851.698	72493.993	209+04.65	

**CURVE 207**

CURVE 207	TYPE CIRCULAR	CURVE	LEFT
BACK N 62. 29. 52.8 W	AHEAD	N 74. 46. 39.1	
CIRCULAR CURVE RADIUS		725.000	DELTA
DEGREE	7. 54. 10.3	LENGTH	155.30
TANGENT (PC TO PI)		77.989	
TANGENT (PI TO PT)		77.989	
PNT PC 207	167818.119	72863.0	
PNT PI 207	167854.133	72793.92	
PNT CC 207	167175.048	72528.3	
PNT PT 207	167874.610	72718.6	

**GENERAL NOTES**

1. NOTICE: According to Colorado Law you must commence any legal action based upon any defect in this survey within three years after you first discover such defect. In no event, may any action based upon any defect in this survey be commenced more than ten years from the date of the certification shown hereon.
2. All centerline and offset stationing is theoretical only and may not represent the centerline as constructed in the field.
3. All coordinates listed are assumed project coordinates. Points 501 through 504, and points 511 through 518 were assigned project coordinates by multiplying State Plane coordinates by 1,000,325.24 then subtracting 2,000,000 from the X coordinate and 500,000 from the Y coordinate. The State Plane Coordinates for these points were taken from a survey performed by the Jefferson County Mapping Department April 1990. The 500 series point numbers are the same as those assigned by Jefferson County Mapping Department.
4. Curve 198 is a tangential curve; Curve 207 and Curve 208 are non-tangential curves.
5. This plat does not show any recorded or implied easements. Users of this plat are hereby warned to on the alert for the existence of any easements not shown here on.
6. Points 501, 502, 503 and 504 are Colorado Department of Highway 3 inch diameter aluminum caps on 3/8" aluminum rods in range boxes set in the centerline of State Highway 74.

**SURVEYOR CERTIFICATION**

Control survey and monumentation was done and checked.

Name \_\_\_\_\_

Date \_\_\_\_\_

---

**SURVEYOR CERTIFICATION**

R.O.W. Plans and Legal Descriptions were prepared and checked.

Name \_\_\_\_\_

Date \_\_\_\_\_

*Basis of Bearings: All bearings based from point 503 to 502 which bears as calculated from the project coordinates 502 and 503.*

SH 74 IDLEDALE  
NRS 373-DC(35)

# STATE OF COLORADO

DEPARTMENT OF HIGHWAYS

4201 East Arkansas Ave.  
Denver, Colorado 80222  
(303) 757-9011



July 20, 1990

Bruce Mock  
Associate Division Counsel  
Transamerica  
Title Insurance Co.  
1800 Lawrence Street  
Denver, Co 80202

Dear Mr. Mock:

The Department of Highways has completed a survey of the highway right of way in the Town of Idledale in cooperation with Jefferson County. As a result of this survey, it was determined that the description in the deed for the highway right of way in Lots 341 and 343 was in error by approximately 40 feet.

I have prepared two Quit Claim Deeds which in effect establishes a property line 25 feet southwesterly of the centerline of the highway as monumented in the field within these two lots. A plat showing the monumentation will be filed and recorded in the Jefferson County records.

By copy of this letter, I am sending a copy of the draft deeds and map to Mr. Marc Bouchie and to Mr. Maurcie Jenks, County Attorney. Please let me know if these deeds are satisfactory. If they are, I will arrange a meeting with Mr. Bouchie to finalize the exchange of deeds.

Thank you for your cooperation in this matter.

Sincerely,

*Eduard M. Tormohlen*  
E. M. Tormohlen  
Staff Right of Way Manager

cc: Marc Bouchie  
Sam Gamboe  
Maurice Jenks

14.5, CONTROL POINT bearing S. 64° 37' 23" E.

It is the intent of this deed to Quit Claim the interest of Marc A. Bouchie in the above described property in exchange for a Quit Claim Deed from the State Department of Highways, Division of Highways, State of Colorado for any interest it may have in the Right of Way of State highway 74 lying southwesterly of the above described property.

\*If in Denver, insert "City and."



# TYPICAL CROSS SECTION OF IMPROVEMENT AND SUMMARY OF QUANTITIES

REV. 3-22-35	STATE	U.S. HIGHWAY	SHEET	TOTAL
4-4-35 & 4-17-35	COLO.	NRS 373-D	2	2
4-9-35				

## GENERAL NOTES

This project is to be constructed in conformity with the Specifications of the Colorado State Highway Department dated January 1, 1930.

Quantities on preliminary plans are to be considered as only.

Excavation required to construct this project is to be obtained as indicated on the plans. Quantities in excess of the limits of the ditch as shown on the Typical Section are to be classified as Borrow or on Tabulation as Embankment, and are to be classified and paid as Excavation.

Quantities are to be stated as part of the original plan at locations indicated on the plans. Slope Stakes, limits of the Typical Section as shown are subject to the Engineer to fit Embankment requirements actually constructed.

Except as limited by the Special Provisions, power may be used on this project.

Curves are to be super-elevated and widened as per the Standard Super-elevation Sheet.

Poles encroaching on the construction are to be moved.

Clearing and grubbing shall be of variable widths and to the minimum required for the construction of the road and to accommodate visibility. Ordinarily the clearing shall extend more than 8 feet beyond the toes of the tops of cut banks.

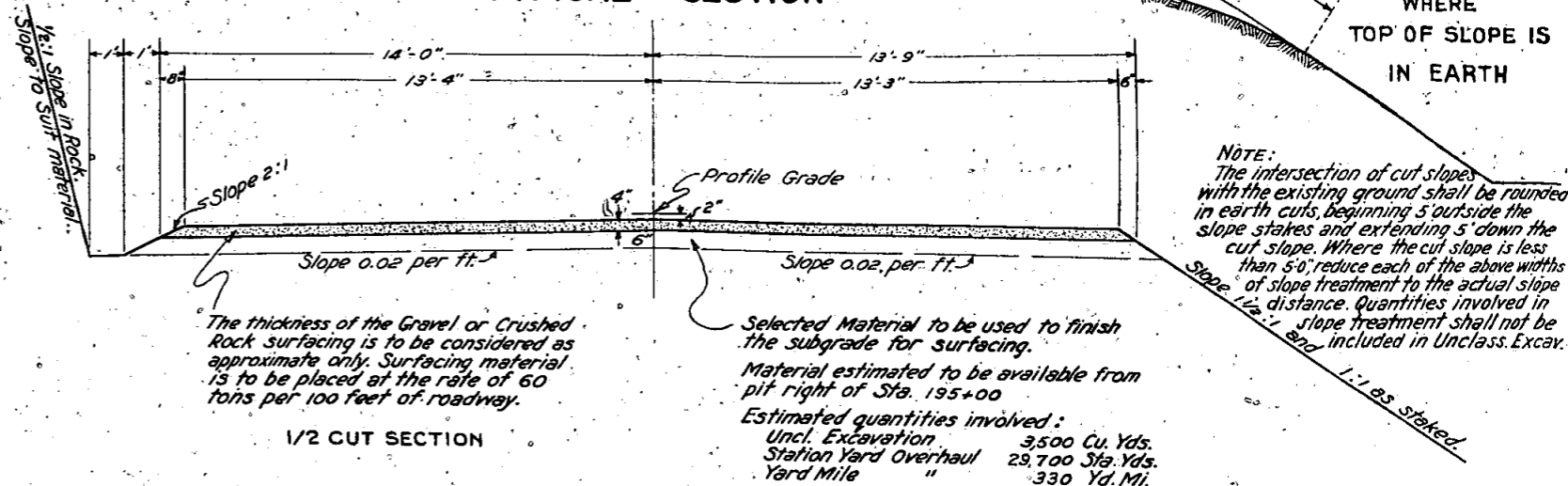
At all places on the project where the new road is along the present travelled road, the contractor shall, at his own expense, prosecute in such a manner that traffic may pass over the road. Also, the contractor shall maintain in safe condition and at his own expense all temporary approaches.

A guard fence shall be placed to separate the roadway and pedestrian traffic.

## FENCING REQUIREMENTS

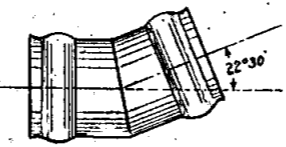
STATIONS	SIDE	REMOVE FENCE	REM.&REB'D FENCE	CHAIN LINK WIRE MESH FENCE	DOUBLE DRIVEWAY GATES
		LIN. FT.	LIN. FT.	LIN. FT.	EACH
192+20 to 193+80	R.	160		330	1
193+80 to 196+80	R.				
197+50	X	150			
199+60	L.	60			
201+90	R.	75			
206+40	R.	20			
210+75 to 213+68	L.		290		
219+65 to 220+70	L.	60	105		
206+70	L.	25			
207+30	L.	10			
<b>Federal Aid Totals</b>		<b>500</b>	<b>290</b>	<b>330</b>	<b>1</b>
<b>Non Fed. Aid Totals</b>		<b>60</b>	<b>105</b>	<b>0</b>	<b>0</b>

## TYPICAL SECTION



1/2 CUT SECTION

ELBOW FOR 24" C.M.P. CULV., STA. 211+50



1/2 FILL SECTIONS



ITEMS INVOLVED IN SIDEWALK

- 30x-Grav. or Crushed Rock Surf.- 330 tons
- 30y-M-C2 Asphaltic Mat'l. - 1300 gals.
- 31 - Oil Processed sidewalk- 2500 sq. yd.

TYPICAL SECTION 5' SIDEWALK

Location of walk to be as indicated on plan sheets and staked by the Engineer. The top inch of thickness of sidewalk is to be oil processed.

## SUMMARY OF APPROXIMATE QUANTITIES

No.	Item	Unit	Federal Aid		Approach 218-225+52.6 Non-Fed. Aid	Totals
			Roadway	Bridge Sta. 197+		
100-b	Clearing & Grubbing Entire Proj.	Imp. Sum.	(a)		(b)	
11a	Removing 15 structures	"				
11b	Remove steps & walk Sta. 194+	"				
11c	Remove & replace Rock wall	Lin. Ft.	535			535
11d	Removing 2 structures	Imp. Sum.				
12a	Remove Fence	Lin. Ft.	500		100	600
12b	Removing & rebuilding fence	"	300		105	405
13c	Unclassified Excav.	Cu. Yd.	50,000		3,000	53,000
13y	Cut Slope Treatment	Mi.	1		0.1	1.1
14a	Dry Rock Excavation (Struct.)	Cu. Yd.	295	270	5	570
14b	Dry Common	"	495	150	5	650
14c	Wet Rock	"	95	5	5	105
14d	Wet Common	"	195	5	5	205
18a	Station Yard Overhaul	Sta. Yd.	90,000		11,000	101,000
18b	Yard Mile Overhaul	Yd. Mi.	1,000		500	1,500
30x	Gravel or Crushed Rock Surfacing	Ton	2,300		500	2,800
46a	Class 'A' concrete	Cu. Yd.	450	666		1,116
46b	Class 'B' concrete	"	5		2	7
47	Reinforcing Steel	Lbs.	39,200	112,200		151,400
48	Structural Steel	"		11,900		11,900
50	Dry Rubble Masonry	Cu. Yd.	6			6
53b	18" Cor. Metal Culvert Pipe	Lin. Ft.	40			40
53c	24" "	"	128		40	168
53e	36" "	"	84			84
53x	24" Elbows for Cor. Met. Pipe	Each	1			1
65	Dry Rubble Slope Paving - 1 ft. Thick	Sq. Yd.	125			125
72	Wire Cable Guard Fence	Lin. Ft.	4376			4376
78	Project Marker	Each	1			1
79	Right of Way Markers	"	42		2	44
81	Brass Name Plate	"	1			1
91a	3/4" Electrical Conduit	Lin. Ft.	80			80
91b	1 1/2" "	"		310		310
92	Junction Boxes	Each		8		8
93a	1 1/2" Pipe Handrail	Lin. Ft.	35			35
93b	1 1/2" Wall railing	"	35			35
97a	Chain Link Wire Mesh Fence	"	330			330
97b	Double Driveway Gates	Each	1			1
30y	M-C2 Asphaltic Material	Gal.	1300			1300
31	Oil Processed Sidewalk	Sq. Yd.	2500			2500
12c	Remove & Replace Wire Mesh Fence	Lin. Ft.	900			900
89	3" Diam. Drain Pipes - 2'-0" Long	Each		4		4
120a	Struct. Clay Tile, 12"x12"x12", 9-cell	"		450		450
WORK TO BE DONE AND MATERIALS FURNISHED BY STATE FORCES						
218+20	Resetting 16 structures	Imp. Sum.				
219+33		"				
<b>Total (F.A.)</b>			<b>42</b>			
<b>Non Fed. Aid</b>			<b>2</b>			

## TABULATION OF STRUCTURES

Station	Description	Remove Struct. No.	Uncl. Excavation Cu. Yds.		Structural Excavation Cu. Yds.		Concrete Cu. Yds.		Reinf. Steel Lbs.	Corr. Metal Culv. Pipe Lin. Ft.			Wire Cable Guard Fence Lin. Ft.	Rem. & Replace Rock Wall	Miscellaneous	
			Excav.	Embank.	Cu. Yds.	Cu. Yds.	Cu. Yds.	Cu. Yds.		18"	24"	36"				
					C.I.A.	C.I.B.										
184+18	Project Marker														1 Proj. Marker	
184+00 to 192+00	Approach to Proj. & Gd Fence															
186+15	Remove structure	1-Bldg.		1700												
187+64	Cross Culvert					10	3.0					84				
189+40	Remove structure	1-Bldg.														
186+46-197+04	Wire Cable Guard Fence (L)												1058			
187+46-190+74	" (R)												328			
193+00	Remove 1 Structure	1-Bldg.														
192+80-193+80	Rem. & Replace Rock wall													100		
193+50-207+25	Rem. & Rebuild Power Line (375)															
194+41	Pedestrian Und. pass. Rem. steps & walk						450	82	5870							
197+065-198+575	Bridge - Conc. Arch															
198+61-199+11	Wire Cable Guard Fence (L)												50			
198+61-199+11	" (R)												50			
199+60	Remove structure	1-Bldg.														
199+65-200+30	Remove & Rebuild Rock Wall													90		
199+75-201+50	Road approach															
199+40-201+50	Wire Cable Guard Fence - R. bank												216			
200+40	Remove Structure	1-Bldg.														
200+55-201+50	Remove & Rebuild Rock Wall													115		
200+75-201+00	"													30		
201+00-201+50	" Rock Wall & No.	1-Bldg.												45		
201+80	Road approach															
201+65-202+10	Remove 55' Rock Wall	1-Wall														
201+90	Remove structure	1-Bldg.														
202+00-204+80	Wire Cable Guard Fence (L)												280			
202+08-204+40	" (R)												292			
203+24	8'x8'x32' Con. Box Culv. Special					370	254		23,160	40						
204+60	C.M.P. side drain & Rd approach															
206+65-208+55	Remove & Rebuild Rock Wall					200	5							155		
207+00-210+75	Road approach															
207+15-210+28	Wire cable Guard Fence - R. bank															
208+96-223+92	" (L)												344			
210+25-223+50	Relocate road on Left												1496			
21+50	C.M.P. Culv. with 22 1/2" Elbow					3200					70			1-24", 22 1/2" Elbow		
216+00-218+00	Remove 6 Bldgs	6-Bldgs														
216+60-217+16	Wire Cable Guard Fence															
216+89	8'x8'x32' Con. Box Culv. (8-T) & Chan.					200			120	113.6			10,165			
220+90	Remove Bldg.	1-Bldg.														
221+50	"	1-Bldg.														
224+00	Cross Culvert and ditches															
201+25	Remove structure	1-Bldg.				10			10	1.65			40			
196+54-197+04	Wire Cable Guard Fence R.													50		
<b>Federal Aid Totals (Sta. 183+95.6-218+00)</b>			15	200	5300			563	443.6	4.65	39,195	40	128	84	4376	535
<b>Non Fed. Aid (Sta. 218+00-223+52.6)</b>			2	10	0			10	0	1.65	0	0	40	0	0	0

\* Structural excavation is estimated to be 60% rock & 40% common, each of which is estimated to be 75% dry & 25% wet.