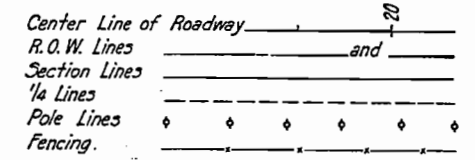


FED. ROAD DIST. NO.	STATE	U.S. P.M. - H. PROJ. NO.	SHEET NO.	TOTAL SHEETS
2	COLORADO	N.R.S. 388-B (1935)	1	1

COLORADO STATE HIGHWAY DEPARTMENT

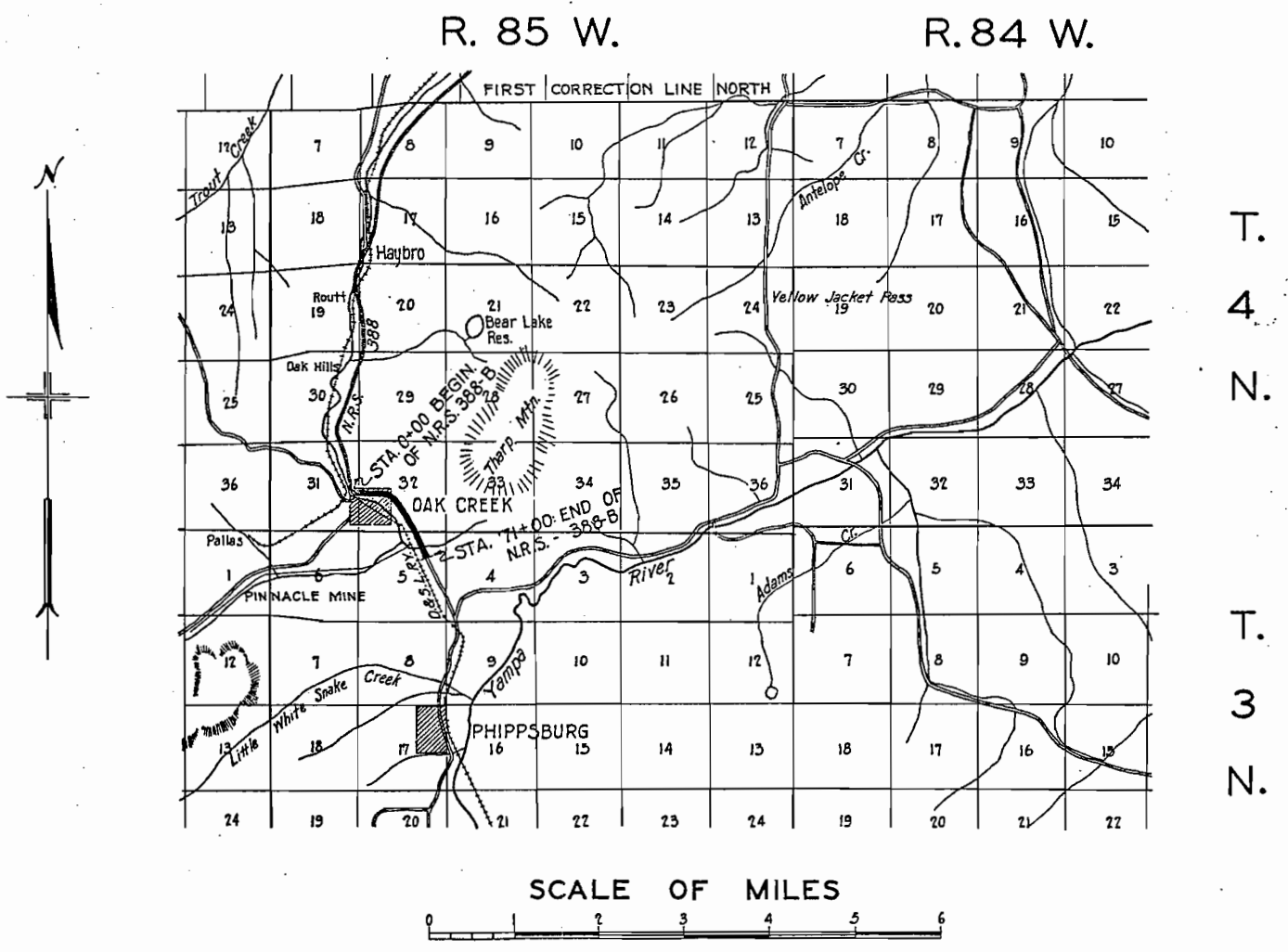
PLAN AND PROFILE OF PROPOSED U. S. P. W. H. PROJECT NO. N.R.S. 388-B (1935) STATE HIGHWAY NO. 131 ROUTT COUNTY

CONVENTIONAL SIGNS



- INDEX OF SHEETS**
- 1. Title Sheet
 - 2. Typical Section and Summary of Quant's
 - 3. List of Structures
 - 4,5,6. Details of Bridge, Sta. 23+
 - 7. Std. Superelevation & Widening M-1-A
 - 8. Std. Wire Cable Guard Fence M-20-G
 - 9. Std. Wire Fences & Marker Posts M-24-F
 - 9A. Std. Structure Number Lettering-M-10-A
 - 10. Std. Headwalls M-102-E
 - 11,12,B. Plan and Profile
 - 14-38. Cross Sections. See final Const. X Sect.

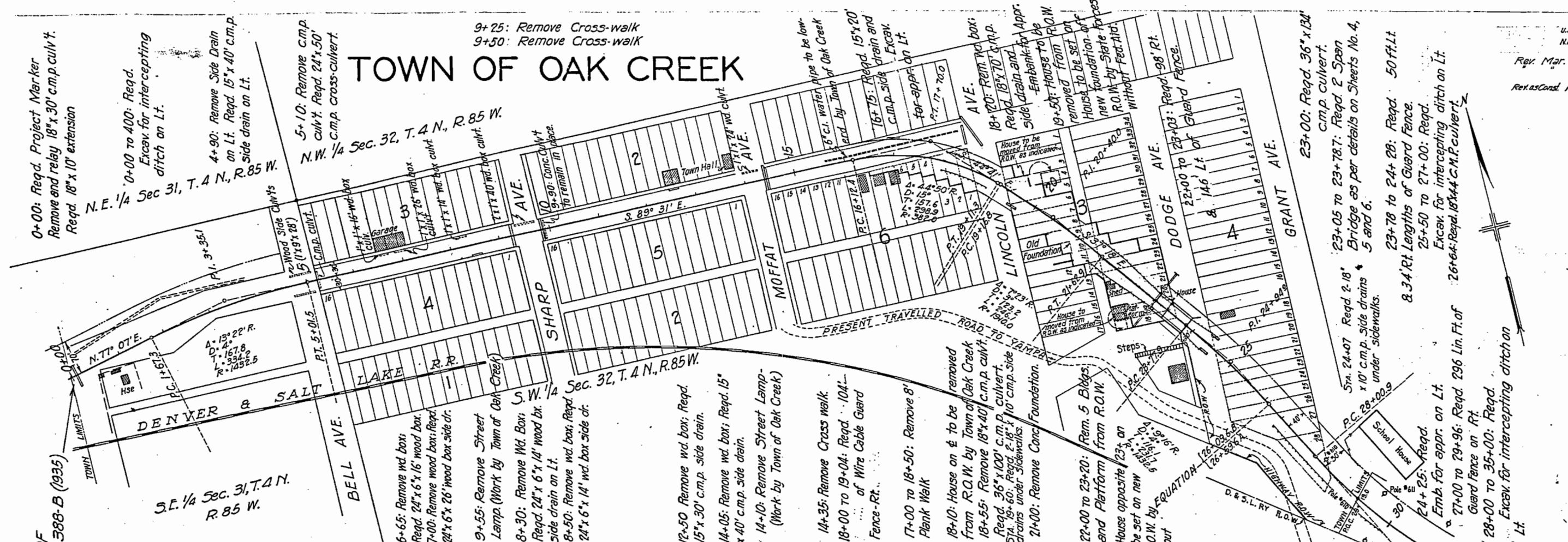
SCALES OF ORIGINAL TRACINGS:
 ON PLAN, 1 IN. = 100 FT.
 ON PROFILE { 1 IN. = 100 FT. HORIZONTAL
 { 1 IN. = 10 FT. VERTICAL
 GRADE LINE ON PROFILE IS SHOWN AS GRADE OF FINISHED ROAD
 GROSS LENGTH OF PROJECT } 7059.6 FT. = 1.337 MILES
 NET LENGTH OF PROJECT }



NOTE
 It is recommended that bidders go over the plan details of the Project with one of the following authorized representatives of this Department.
 H.L. JENNESS, Division Engineer, GLENWOOD SPGS
 STANLEY DISMUKE, Resident Engineer, OAK CREEK

RECOMMENDED FOR APPROVAL 3/7/35
J. J. Maloney
 ASSISTANT ENGINEER
 APPROVED
Chas. Hail
 STATE HIGHWAY ENGINEER
 RECOMMENDED FOR APPROVAL
 DIST. ENG. BUREAU PUBLIC ROADS
 RECOMMENDED FOR APPROVAL
 CHIEF ENG. BUREAU PUBLIC ROADS
 APPROVED
 DIRECTOR BUREAU PUBLIC ROADS

TOWN OF OAK CREEK



U.S.P.M. - H.
N.R.S. 388-B
(1935) II
Rev. Mar. 22 '35 F.W.D.
29 '35 R.L.S. & R.W.
Revised No. 12-36. A.J.T.

NOTE: All poles encroaching upon the R.O.W. shall be moved by the owners.
Fencing and Gates are tabulated on Sheet No. 2.

