

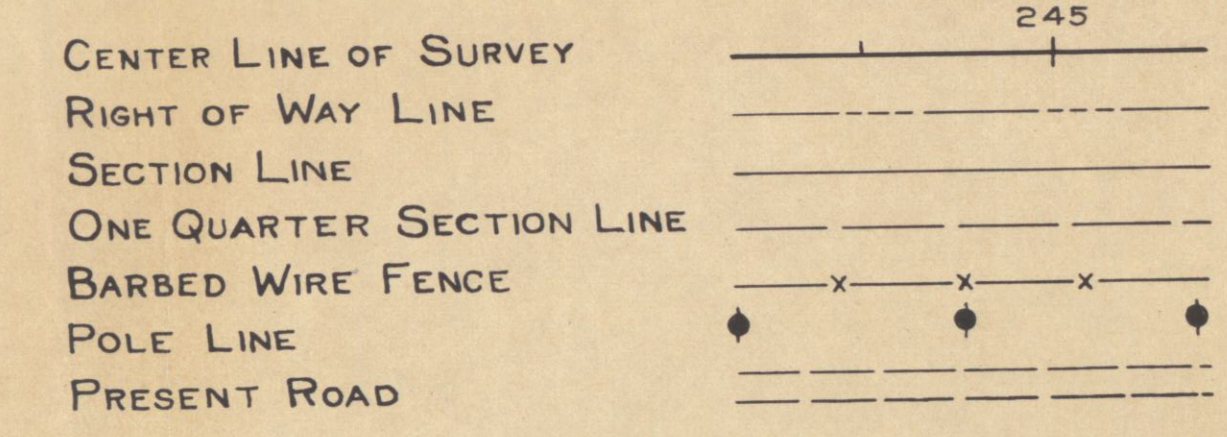
COLORADO STATE HIGHWAY DEPARTMENT

PLAN AND PROFILE OF PROPOSED U.S.P.W. HIGHWAY PROJECT N.R.S. 401 (1935) STATE HIGHWAY NO. 66 BOULDER & LARIMER COUNTIES

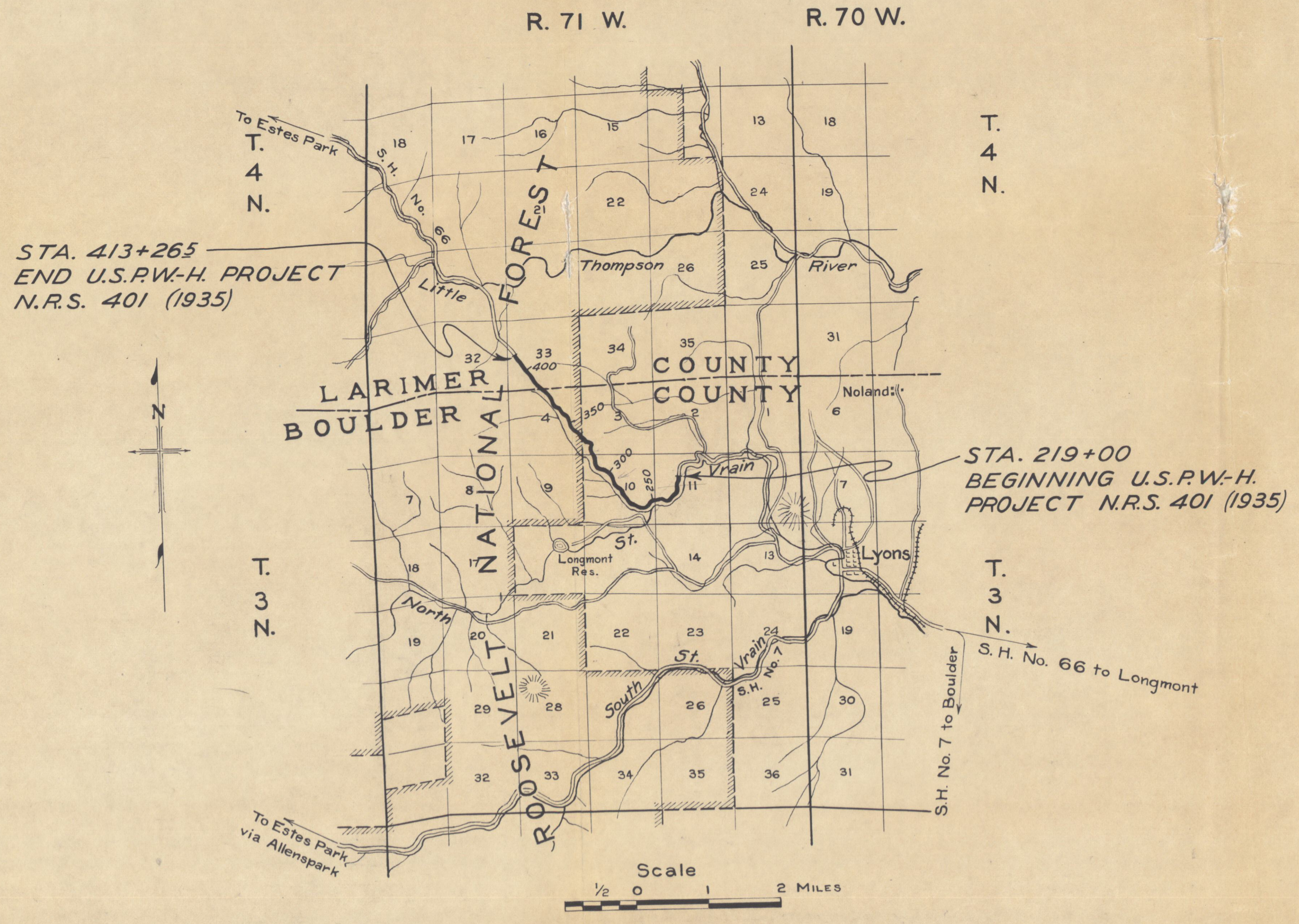
INDEX OF SHEETS

- SHEET No. 1. SKETCH MAP AND TITLE SHEET.
- 2. TYPICAL SECTION AND SUMMARY OF QUANTITIES.
- 3. TABULATION OF STRUCTURES.
- 4. STANDARD SUPERELEVATION AND WIDENING M-1-A
- 5. " WIRE CABLE GUARD FENCE M-20-G
- 6. " WIRE FENCES AND MARKER POSTS M-24-F
- 7. " HEADWALLS M-102-E
- 8. " CONCRETE BOX CULVERTS M-103-D
- 9 to 15. ALIGNMENT PLAN AND PROFILE SHEETS.

CONVENTIONAL SIGNS



SCALE OF ORIGINAL TRACINGS
ON PLAN, 1 IN. = 100 FT.
ON PROFILE { 1 IN. = 100 FT. HORIZONTAL
 1 IN. = 10 FT. VERTICAL
GRADE LINE ON PROFILE IS SHOWN AS GRADE OF FINISHED ROAD
GROSS LENGTH OF PROJECT } 19,321.0 FEET = 3.659 MILES
NET LENGTH OF PROJECT }



MICROFILMED

RECOMMENDED FOR APPROVAL 12/29/34
Chas. D. Hail
 ASSISTANT ENGINEER
 APPROVED
Chas. D. Hail
 STATE HIGHWAY ENGINEER
 RECOMMENDED FOR APPROVAL
 DIST. ENG. BUREAU PUBLIC ROADS
 RECOMMENDED FOR APPROVAL
 CHIEF ENG. BUREAU PUBLIC ROADS
 APPROVED
 DIRECTOR BUREAU PUBLIC ROADS

N.W. 1/4 Sec. 11

S.W. 1/4 Sec. 11
T. 3 N., R. 71 W.

FED. ROAD DIST. NO.	STATE	PROJECT NO.	SHEET NO.	TOTAL SHEETS
3	OKLA.	N.R.S. 401 (1935)	9	

NOTE:
Wire Cable Guard Fence is to be placed at the stations shown on sheet No. 2.

STA. 233+05 (30' Left)
46' Span Conc. I-Beam Bridge (D-15-D) to remain in place.
Req'd. 100 cu. yds. uncl. excav. for road approach.

Sta. 226+90
Remove chicken-house and outhouse.

Sta. 232+50
Req'd. 6'x7'x38' conc. box culvert & 150 cu. yds. uncl. excav. for inlet & outlet.

Sta. 229+40
Req'd. 24" x 50' C.M.P. cross culvert & 10 cu. yds. uncl. excav. for inlet.

Sta. 225+30
Req'd. 24" x 54' C.M.P. cross culvert.

Both Houses Have been moved
Sta. 232+00
Remove house off R.O.W. Same to be reset by State Forces without Federal Aid.

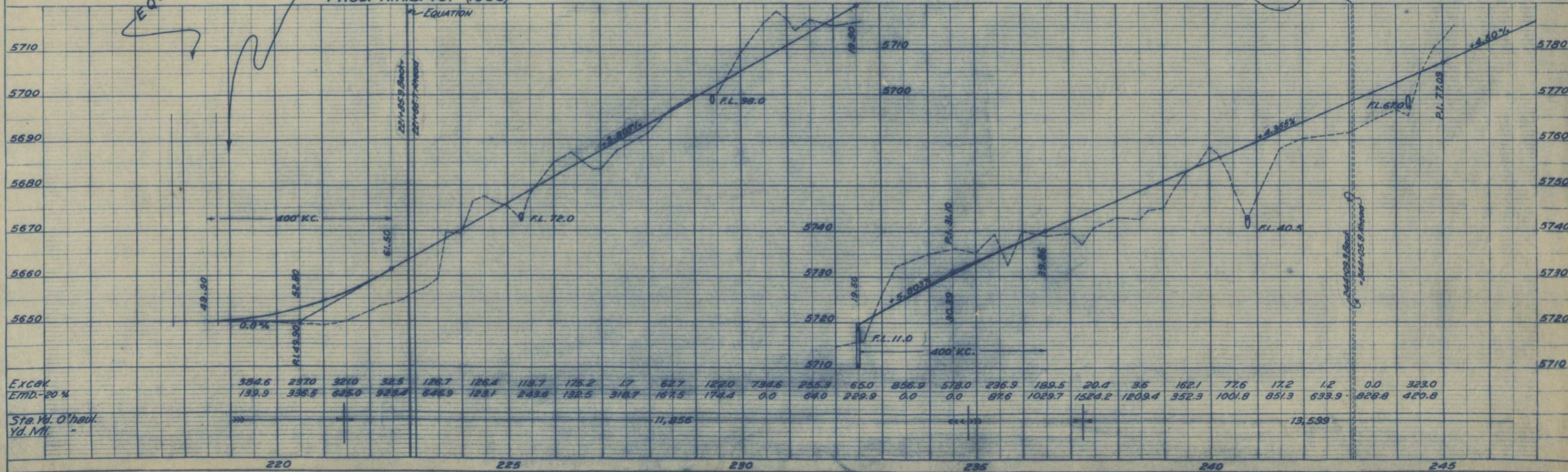
Sta. 240+80
Req'd. 36" x 100' C.M.P. cross culvert

Sta. 234+00
Req'd. to lower 200 lin. ft. 1" water pipe.

Sta. 244+25
Req'd. 36" x 58' C.M.P. cross culvert & 10 cu. yds. uncl. excav. for inlet.

STA. 219+00
BEGINNING U.S.P.W.-H
PROJ. N.R.S. 401 (1935)

S.E. 1/4 Sec. 10



Handwritten notes:
The fence line is to be moved
7/2/39

PLAN
SCALE
DATE
BY

PROFILE
SCALE
DATE
BY

S.W. 1/4 Sec. 10
T. 3 N., R. 71 W.

N.W. 1/4 Sec. 10

Sta. 274+50
Reqd. 30"x102' C.M.P.
cross culvert & 15
cu. yds. uncl. excav.
for inlet.

Sta. 283+10
Reqd. 36"x78' C.M.P.
cross culvert & 15
cu. yds. uncl. excav.
for inlet.

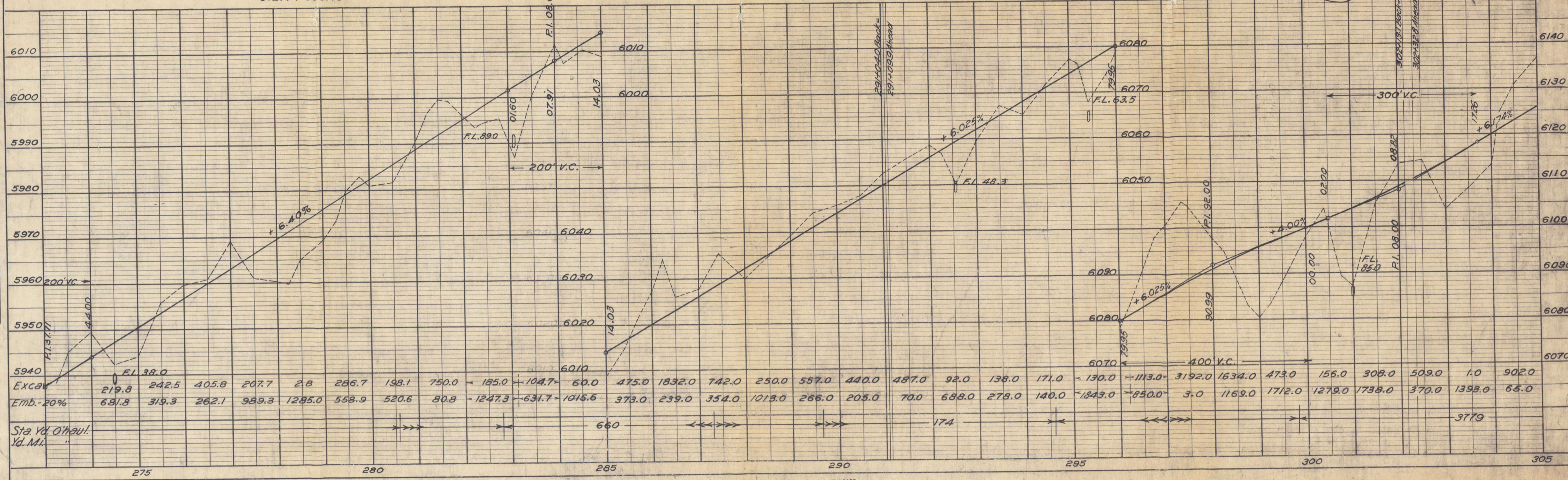
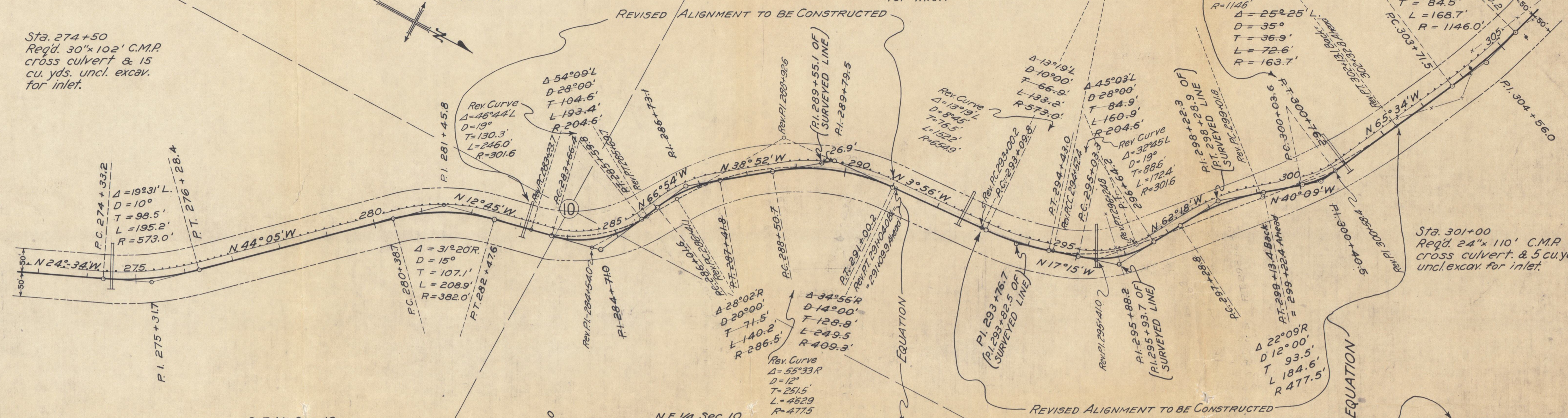
Sta. 292+55
Reqd. 30"x74' C.M.P.
cross culvert & 5
cu. yds. uncl. excav.
for inlet.

Sta. 295+40
Reqd. 30"x110' C.M.P.
cross culvert & 10
cu. yds. uncl. excav.
for inlet.

Sta. 301+00
Reqd. 24"x110' C.M.P.
cross culvert & 5 cu. yds.
uncl. excav. for inlet.

PLAN	DATE
BY	
REVISIONS	
NO.	DATE
1	
2	
3	
4	
5	
6	
7	
8	
9	
10	
11	
12	
13	
14	
15	
16	
17	
18	
19	
20	
21	
22	
23	
24	
25	
26	
27	
28	
29	
30	

PROFILE	DATE
BY	
REVISIONS	
NO.	DATE
1	
2	
3	
4	
5	
6	
7	
8	
9	
10	
11	
12	
13	
14	
15	
16	
17	
18	
19	
20	
21	
22	
23	
24	
25	
26	
27	
28	
29	
30	

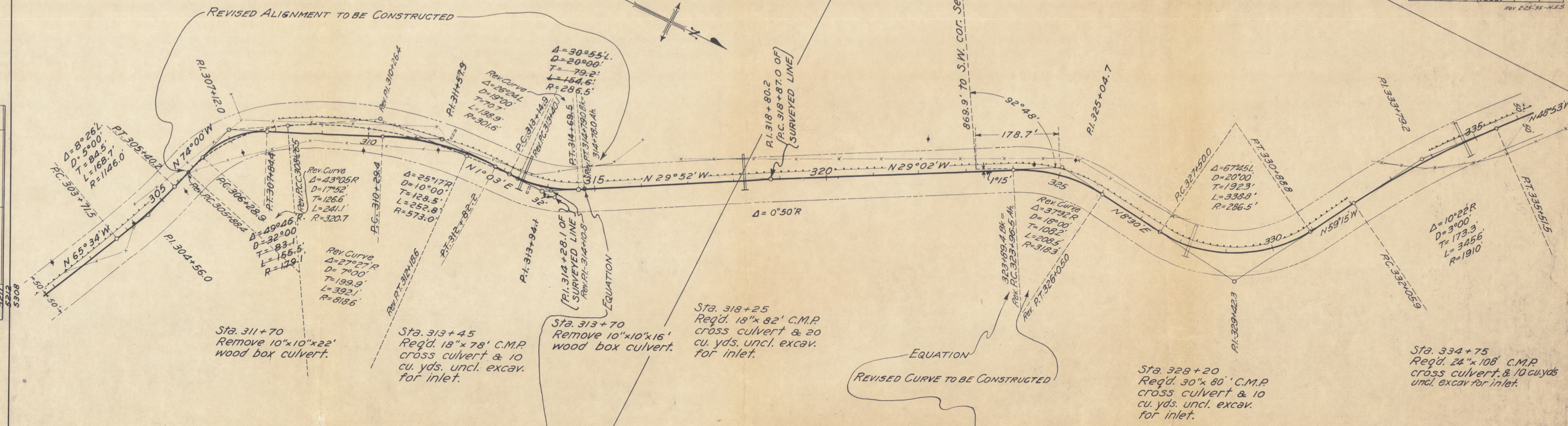


Excav.	219.8	242.5	405.8	207.7	2.8	286.7	198.1	750.0	185.0	104.7	60.0	475.0	1832.0	742.0	250.0	557.0	440.0	487.0	92.0	138.0	171.0	130.0	1113.0	3192.0	1634.0	473.0	156.0	308.0	509.0	1.0	902.0	
Emb.-20%	631.8	319.3	262.1	939.3	1285.0	559.9	520.6	80.8	1247.3	631.7	1015.6	373.0	239.0	354.0	1013.0	266.0	205.0	70.0	688.0	278.0	140.0	1843.0	850.0	3.0	1169.0	1712.0	1279.0	1738.0	370.0	1393.0	66.0	
Sta. Vd. O'Haul.																																
Yd. Mi.																																

FED. ROAD DIST. NO.	STATE	U.S.P.W.-M. PROJ. NO.	SHEET NO.	TOTAL SHEETS
3	COLO.	N.R.S. 401 (1935)	12	

PLAN	DATE
2/27/35	
REVISIONS	
NOTE BOOK ALIGNED CHECKED	
NO. 5275	BY
5277	
5278	

PROFILE	DATE
2/27/35	
REVISIONS	
NOTE BOOK CHECKED	
NO. 5275	BY
5276	
5277	
5278	



Sta. 311+70
Remove 10"x10"x22'
wood box culvert.

Sta. 313+45
Req'd. 18"x78' C.M.P.
cross culvert & 10
cu. yds. uncl. excav.
for inlet.

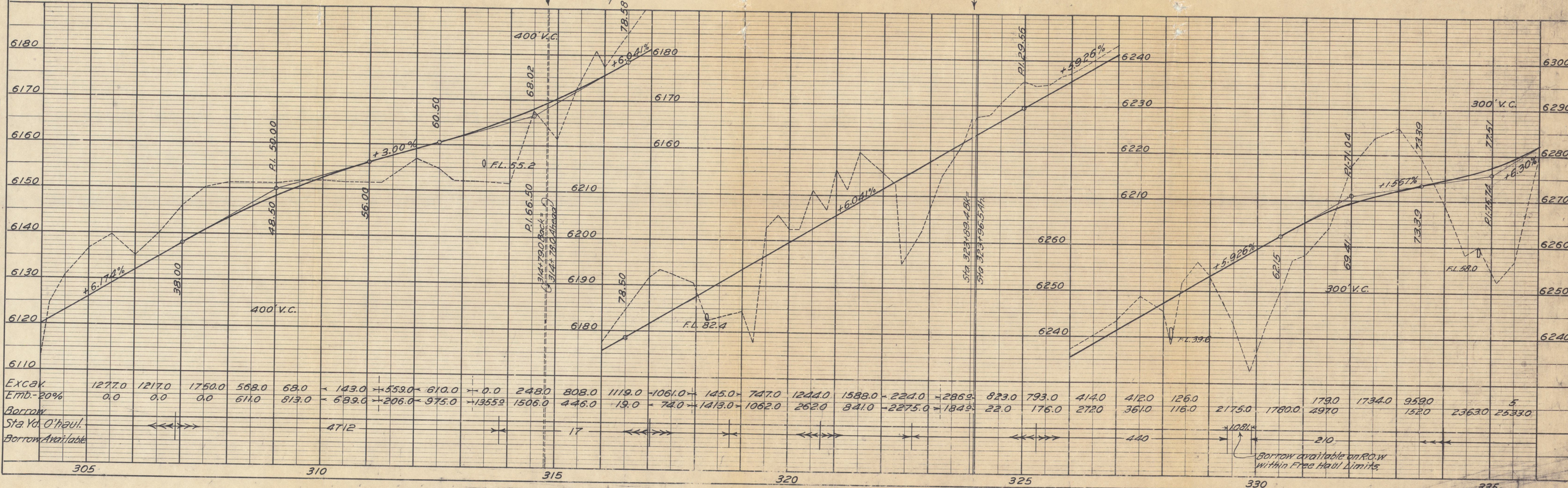
Sta. 313+70
Remove 10"x10"x16'
wood box culvert.

Sta. 318+25
Req'd. 18"x82' C.M.P.
cross culvert & 20
cu. yds. uncl. excav.
for inlet.

EQUATION
REVISED CURVE TO BE CONSTRUCTED

Sta. 328+20
Req'd. 30"x80' C.M.P.
cross culvert & 10
cu. yds. uncl. excav.
for inlet.

Sta. 334+75
Req'd. 24"x108' C.M.P.
cross culvert & 10 cu. yds
uncl. excav for inlet.



Excav	1277.0	1217.0	1750.0	568.0	68.0	143.0	559.0	610.0	0.0	2480	808.0	1119.0	1061.0	145.0	747.0	1244.0	1588.0	224.0	286.9	823.0	793.0	414.0	412.0	126.0	2175.0	1780.0	179.0	1734.0	959.0	5
Emb.-20%	0.0	0.0	0.0	611.0	813.0	689.0	206.0	975.0	1355.9	1506.0	446.0	19.0	74.0	1413.0	1062.0	262.0	841.0	2275.0	1849.9	22.0	176.0	272.0	361.0	116.0	1081.0	210	497.0	152.0	2363.0	
Borrow																														
Sta. Vol. O'haul.																														
Borrow Available																														

S.E. 1/4 Sec. 4
T. 3 N., R. 71 W.

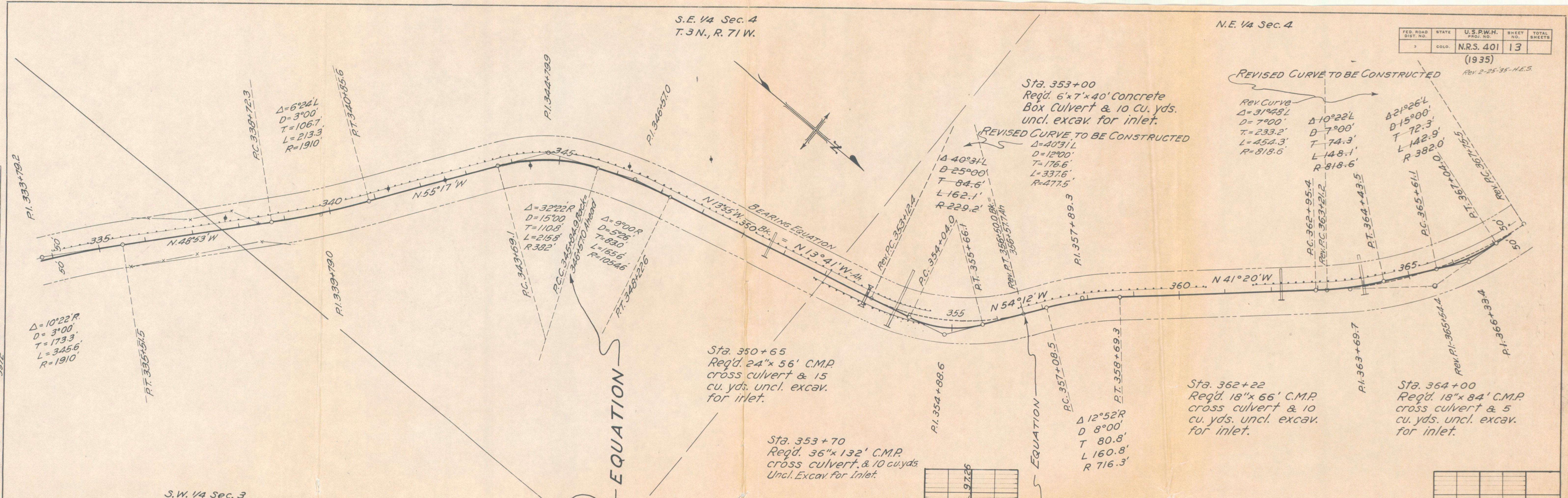
N.E. 1/4 Sec. 4

FED. ROAD DIST. NO.	STATE	U.S.P.W.H. PROJ. NO.	SHEET NO.	TOTAL SHEETS
3	COLO.	N.R.S. 401	13	

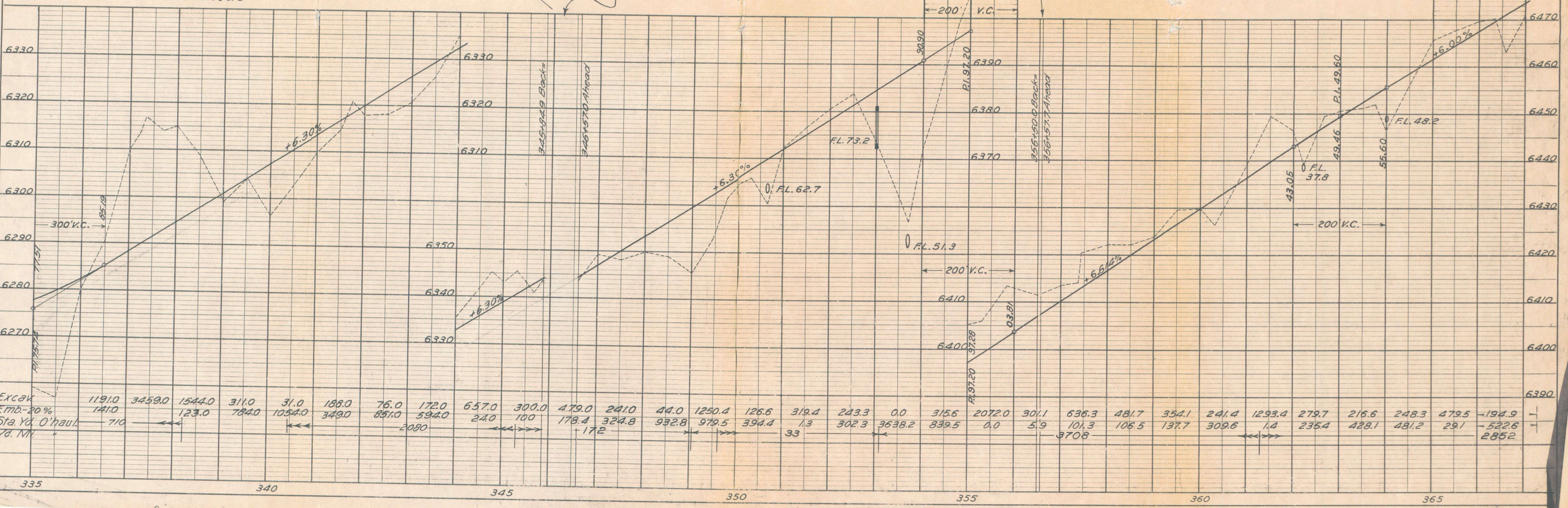
(1935)
Rev 2-25-35-H.E.S.

PLAN	DATE
BY	
CHECKED	
DATE	
NOTE BOOK NO. 5271	RT. OF WAY CHECKED
5272	

PROFILE	DATE
BY	
CHECKED	
DATE	
NOTE BOOK NO. 5276	STRUCTURE NOTATIONS CHECKED
5277	



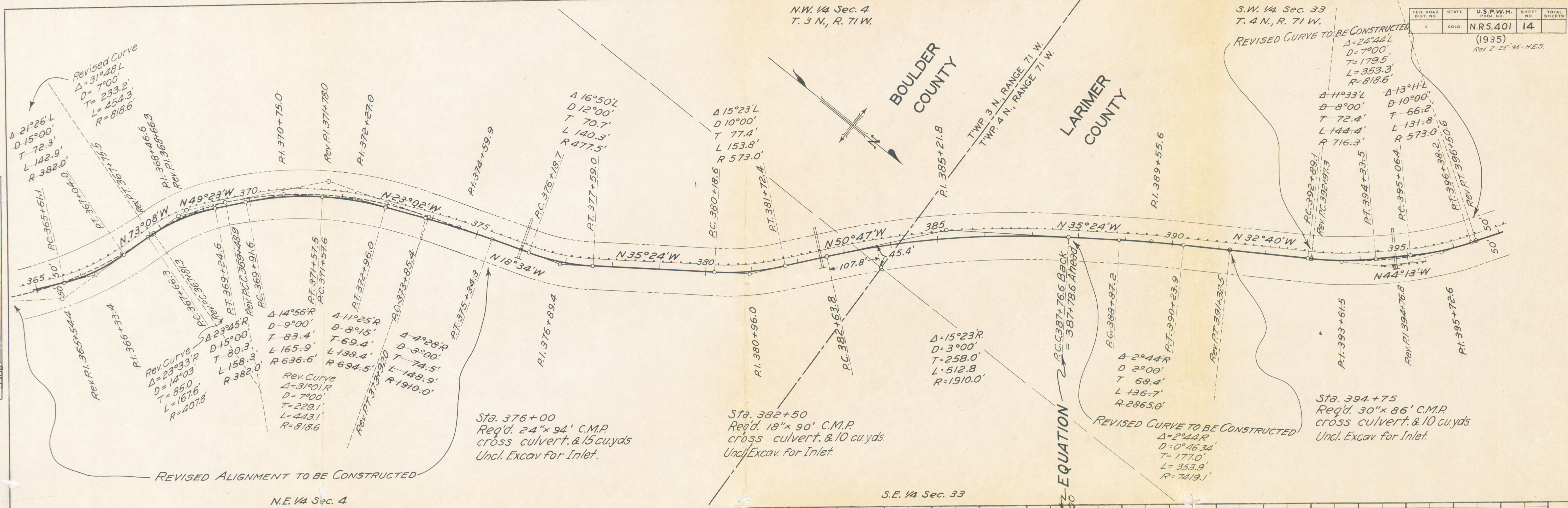
S.W. 1/4 Sec. 3



Excav	119.0	3459.0	1544.0	311.0	31.0	188.0	76.0	172.0	657.0	300.0	479.0	241.0	44.0	1250.4	126.6	319.4	243.3	0.0	315.6	2072.0	301.1	636.3	481.7	354.1	241.4	1293.4	279.7	216.6	248.3	479.5	-194.9
Emb. 30%	141.0		123.0	784.0	1054.0	349.0	887.0	594.0	24.0	100	178.4	324.8	932.8	979.5	394.4	1.3	302.3	3638.2	839.5	0.0	5.9	101.3	106.5	137.7	309.6	1.4	235.4	428.1	481.2	291	
Sta. Yd. O'Haul	710						2080																								
Yd. M.																															

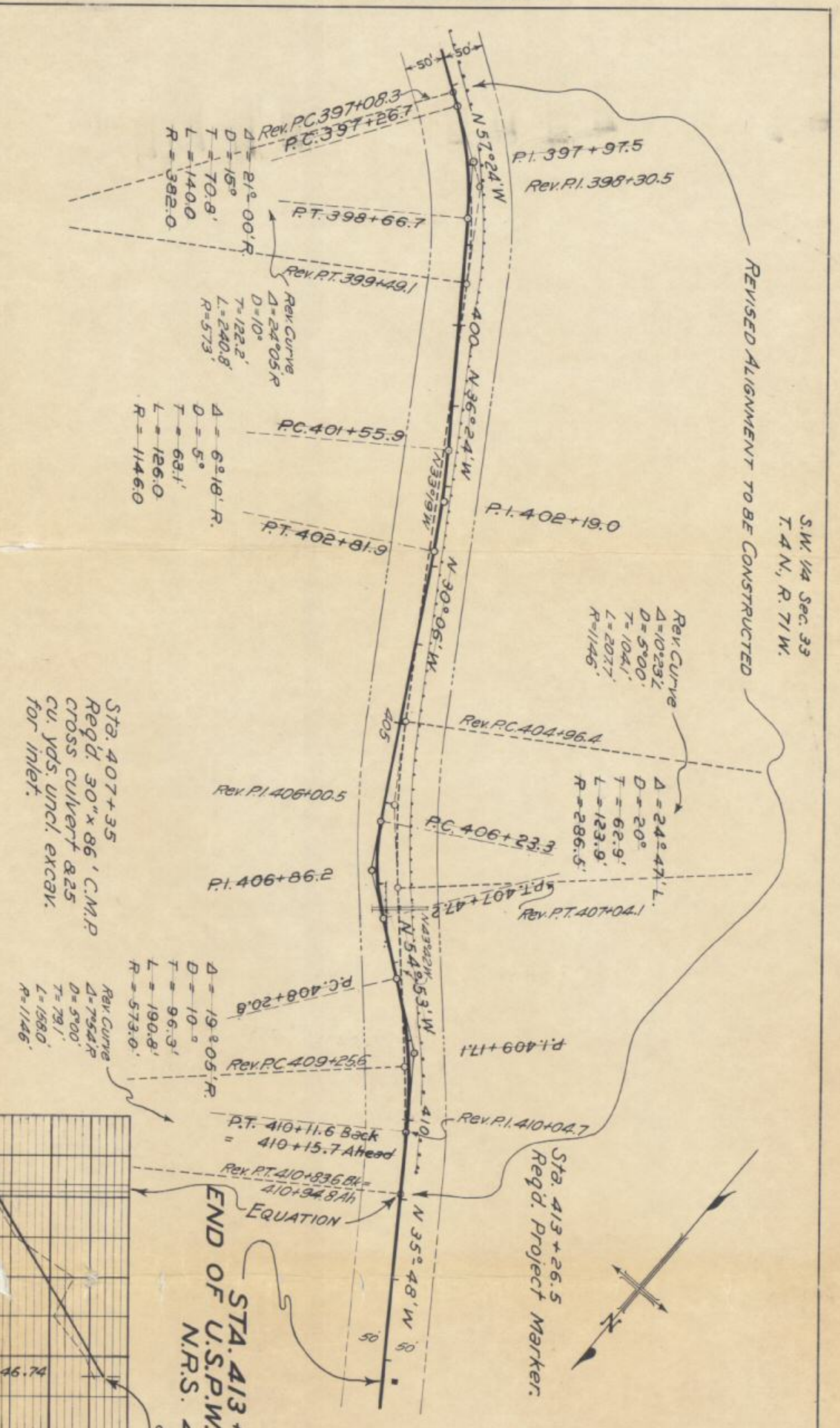
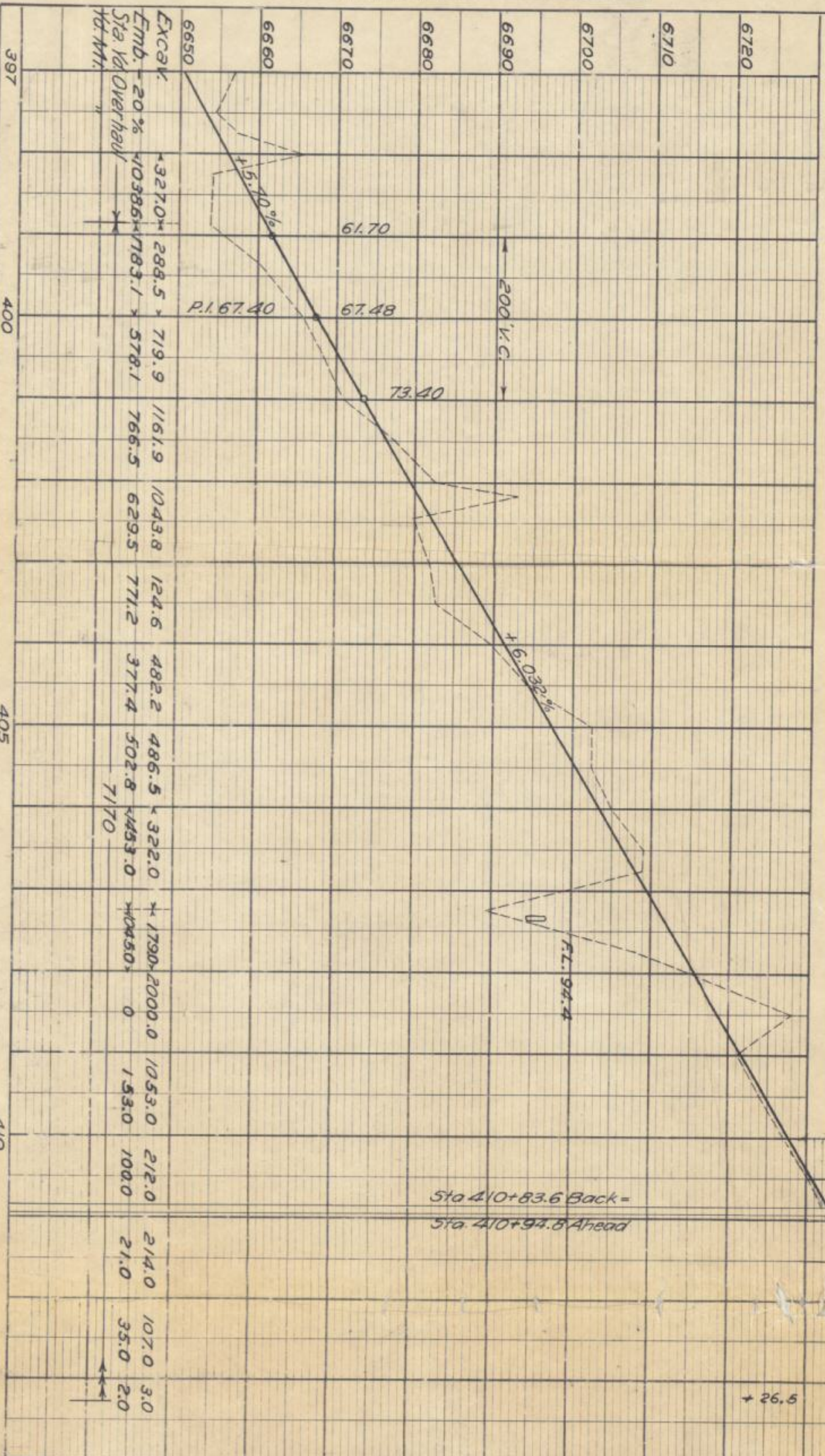
PLAN
 SHEET NO. BY DATE
 PLOTTED
 ALIGNED CHECKED
 NOTE BOOK GRADES CHECKED
 No. 5216
 REVISIONS CHECKED

PROFILE
 SHEET NO. BY DATE
 PLOTTED
 GRADES CHECKED
 NOTE BOOK GRADES CHECKED
 No. 5216
 REVISIONS CHECKED

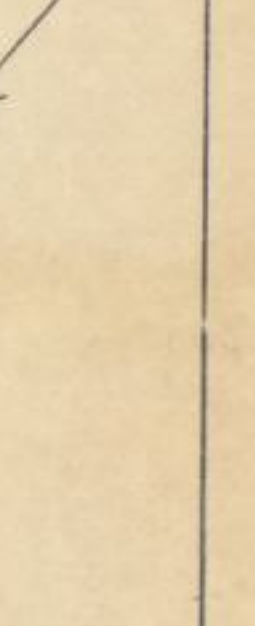


PROFILE	BY	DATE
SURVEYED		
PLOTTED		
GRADES CHECKED		
NO. 5216		
STRUCTURE NOTATIONS CHECKED		

PLAN	BY	DATE
PLOTTED		
ALIGNMENT CHECKED		
NO. 5211		
RT. OF WAY CHECKED		



S.W. 1/4 Sec. 33
T. 4 N., R. 71 W.



PROJECT TOTALS		Excavation	Embankment	Overhaul	Excavation	Embankment	Overhaul	Excavation	Embankment	Overhaul	
113,046	Cu Yds.	1,081	"	23,009	"	12,222	"	670	"	152,028	"
137,274	"	109,820	"	560	"	112	"	7232	"	7904	"
394,646											

U.S.P.W.-H. DIST. CORP.
NRS 401 15
(1935)
REV. 2-25-34-H-2.5