

INDEX OF SHEETS

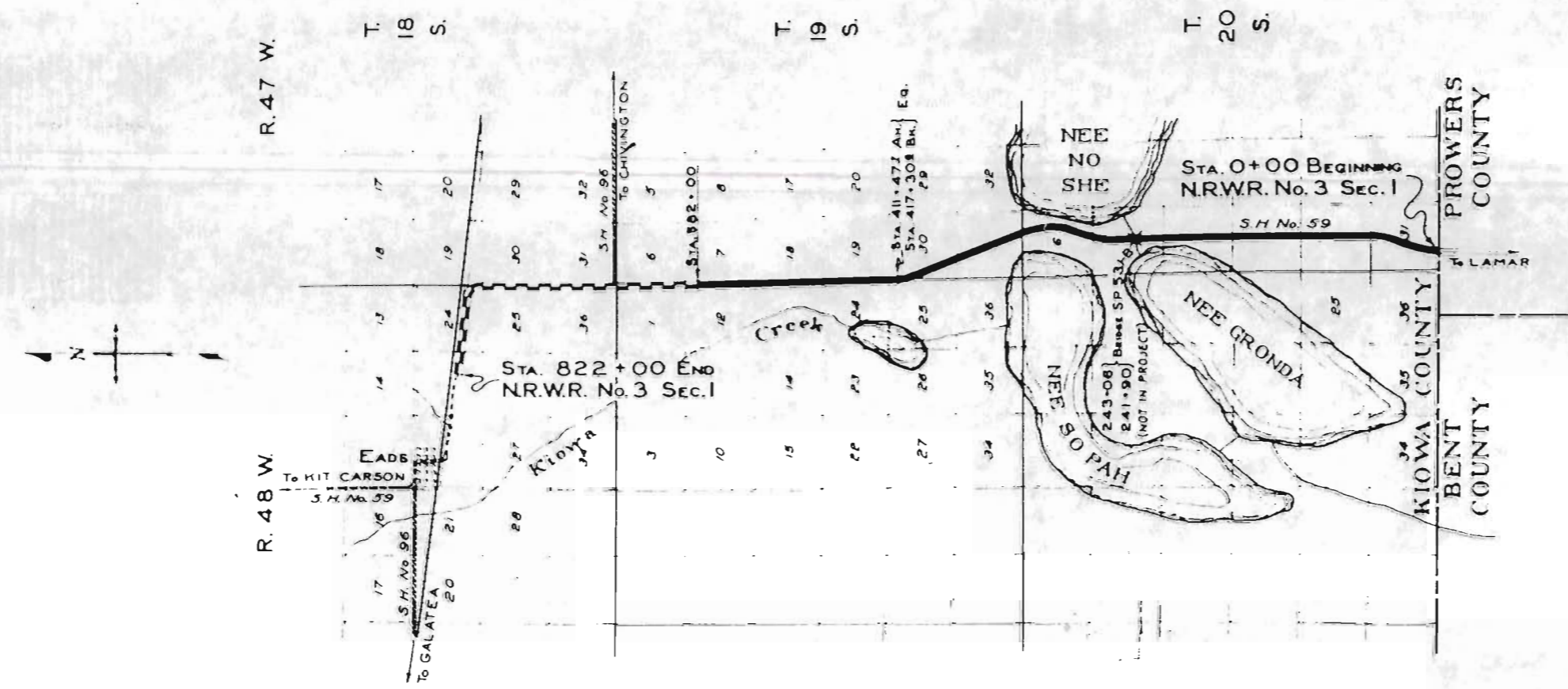
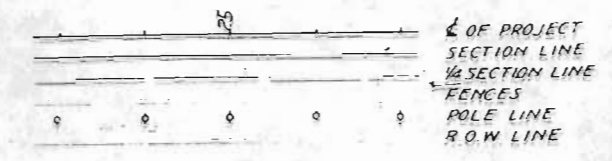
- 1. TITLE PAGE
- 2. TYPICAL SECTION & SUMMARY
- 3. STANDARD SUPERELEVATION SHEET
- 4-19. PLAN & PROFILE SHEETS

COLORADO STATE HIGHWAY DEPARTMENT

PLAN AND PROFILE OF PROPOSED U.S.P.W. RELIEF HIGHWAY PROJECT COLORADO N.R.W.R. NO. 3 SECTION NO. 1 KIOWA COUNTY STATE HIGHWAY NO. 59

SCALES
ON PLAN. 1 IN. = 100 FT.
ON PROFILE 1 1/2 IN. = 100 FT. HORIZONTAL
1 1/2 IN. = 10 FT. VERTICAL
GRADE LINE ON PROFILE IS SHOWN AS GRADE OF FINISHED ROAD
GROSS LENGTH OF PROJECT - 82,782.9 FEET = 15.678 MILES
NET LENGTH OF PROJECT - 82,666.9 " = 15.656 "

CONVENTIONAL SIGNS

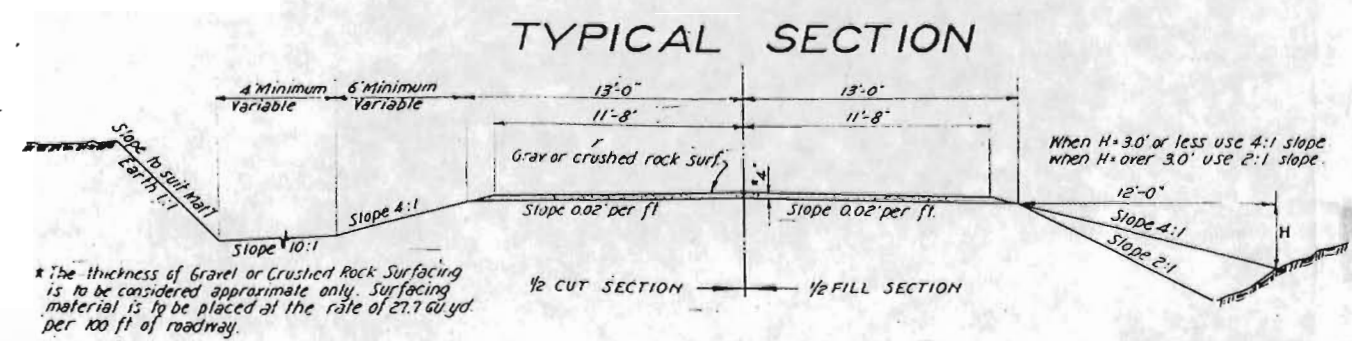


LEGEND - GRADED & SURFACED
GRADED

Scale 1 inch = 1 mile

RECOMMENDED FOR APPROVAL 7/13/35
J. J. Maloney
ASSISTANT ENGINEER
APPROVED 7/13/35
Chas. D. Vail
STATE HIGHWAY ENGINEER
RECOMMENDED FOR APPROVAL
DIST. ENG. BUREAU PUBLIC ROADS
RECOMMENDED FOR APPROVAL
CHIEF ENG. BUREAU PUBLIC ROADS
APPROVED
DIRECTOR BUREAU PUBLIC ROADS

TYPICAL CROSS SECTION OF IMPROVEMENT AND SUMMARY OF QUANTITIES



* The thickness of Gravel or Crushed Rock Surfacing is to be considered approximate only. Surfacing material is to be placed at the rate of 27.7 cu. yd. per 100 ft. of roadway.

LIST OF STRUCTURES (AS CONST.)

LOCATION	DESCRIPTION	Excavation		Struct. Excav.	Corr. Metal Culv. Pipe	Miscellaneous
		Cu. Yd.	Excav. Emb.			
107+00	Cross Drain and outlet ditch	143.8		129	42	
141+00	" " " "	40.6		122	42	
231+00	Double Cross Drain and outlet ditch	71.5		262	42	
320+00	Cross Drain and outlet ditch	265.0		125	42	
437+00	Double Cross Drain and outlet ditch	245.0		239	42	
451+00	" " " "	77.0		236	42	
480+00	Cross Drain and outlet ditch	324		129	42	
484+25	Outlet ditch	155.1				
513+00	Cross Drain and outlet ditch	165.8		125	42	
529+00	Outlet ditch	112.6				
554+00	Cross Drain and outlet ditch	172.8		120	42	
598+00	" " " "	77.1		134	42	
TOTALS		1558.7		1619	546	

PLATING

At locations indicated in the following tabulation, Plating will be required to stabilize embankments. The sources of plating material, locations of plating and quantities involved are as follows.

SOURCE	LOCATION OF PLATING	QUANTITY - CU. YD.
PIT STAS 756-766	STA 706+00 TO STA 724+00	1883
" " "	STA 724+00 TO STA 756+00	817
" " "	STA 801+00 TO STA 822+00	294
TOTAL		2994

GENERAL NOTES

This project is to be constructed in conformity with Standard Specifications of the Colorado State Highway Department adopted on Jan. 1, 1930. All curves are to be super-elevated and widened as shown on the Standard Super-elevation sheet included with the plans.

FENCING (AS CONST.)

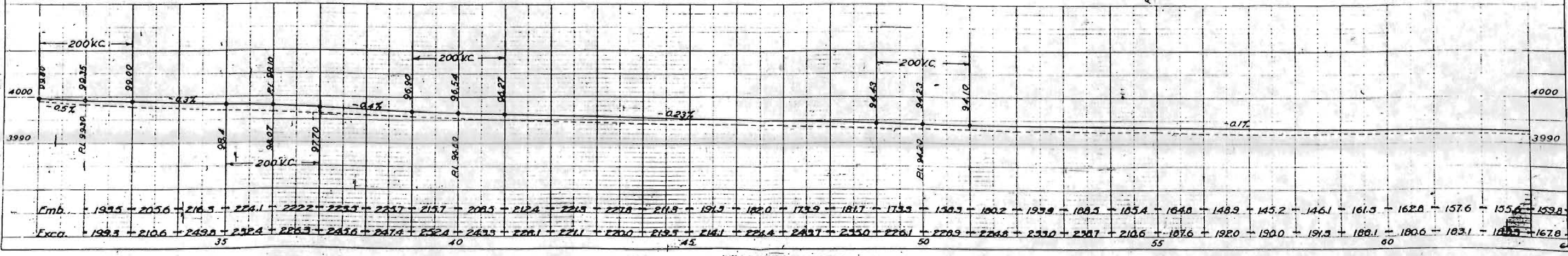
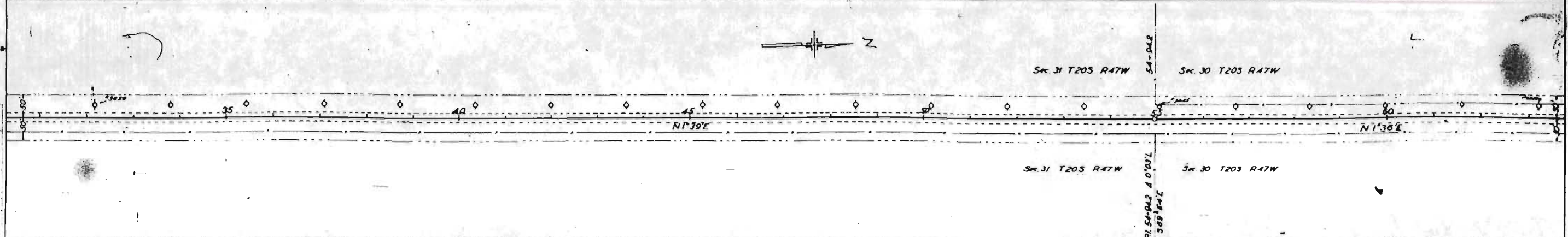
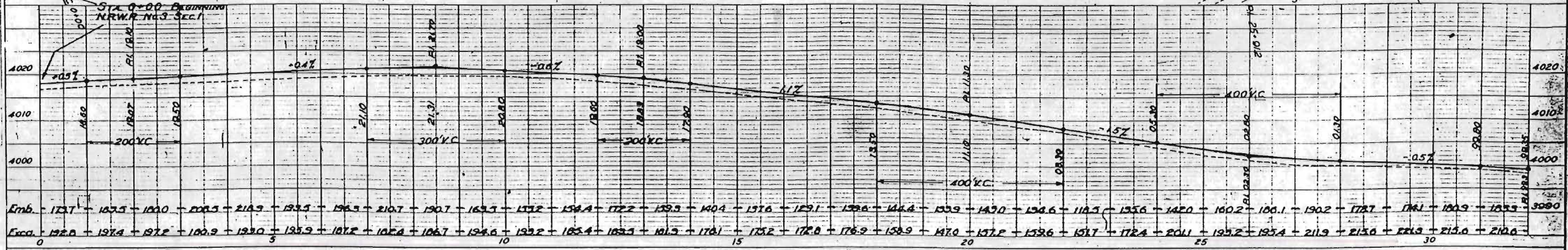
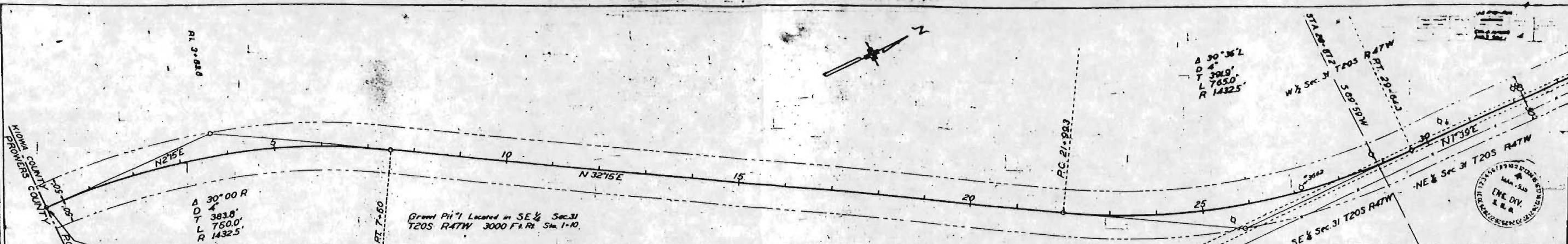
STATION	REMOVED		REBUILT	
	Left Lin. Ft.	Right Lin. Ft.	Left Lin. Ft.	Right Lin. Ft.
27+00 - 107+20		8060.	2615.	8020
54+85 - 81+10	2635			
107+80 - 133+48		4608.	2882.	4568.
213+28 - 241+90	2882			
293+00 - 320+12		2746.		2712.
457+20 - 483+40	2680		2620	
483+10 - 617+16		13546.		13406.
536+70 - 642+20	10650.		10550.	
642+85 - 693+01	5276.		5216.	
643+50 - 693+01		5211		5151.
635+61 - 749+85	5504		5424	
695+61 - 726+95		3194.		3134
728+27 - 752+38		2450.		2411.
749+85 - 770+31		2450.		1975
756+70 - Corral	200			
770+31 - 822+00	5462		5360	
TOTAL	55309.	42265.	36642.	39402.
TOTAL L&R	*77574		*76044	

* FENCE REMOVED & REBUILT 76044 Lin. Ft.
 FENCE REMOVED 1530 Lin. Ft.

SUMMARY OF QUANTITIES (AS CONST.)

NO	ITEM	UNIT	ROADWAY		TOTAL
			GRADE & SURFACED	GRADE	
10a	Clear & grub entire project	Lump Sum			
10b	Clear & Grub entire project	Lump Sum			
12a	Remove Fence	Lin. Ft.	354	1176	1530
12b	Remove & Rebuild Fence	Lin. Ft.	37837	38207	76044
13a	Unclassified Excavation	Cu. Yd.	145782.1	60170.1	205952.2
13b	Plating	Cu. Yd.		2994	2994
14b	Dry Com. Excav. (Str)	Cu. Yd.	148.5	13.4	161.9
30*	Gravel or Cr. Rock Surfacing	Cu. Yd.	16254.5		16254.5
33c	24" Corr. Met. Culv. Pipe	Lin. Ft.	504	42.	546.

PLAN
 DRAWN BY
 CHECKED BY
 DATE



S.W. 1/4 Sec. 30
T. 20S., R. 40W.

N.W. 1/4 Sec. 30
T. 20S., R. 47W.

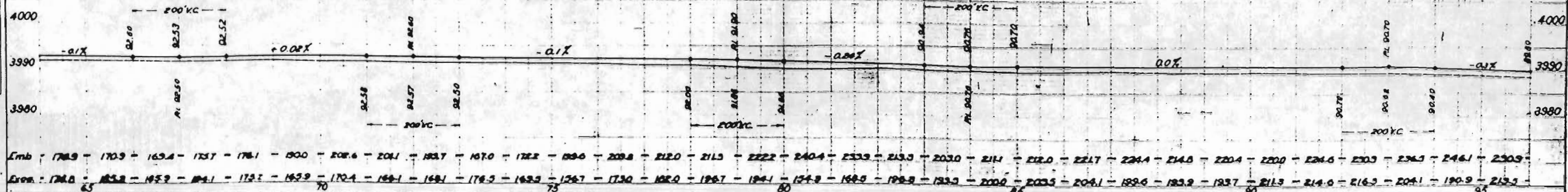
Sheet No.	3	4	5
Scale	1" = 100'	1" = 100'	1" = 100'



PLAN	1" = 100'
SECTION	1" = 100'
PROFILES	1" = 100'

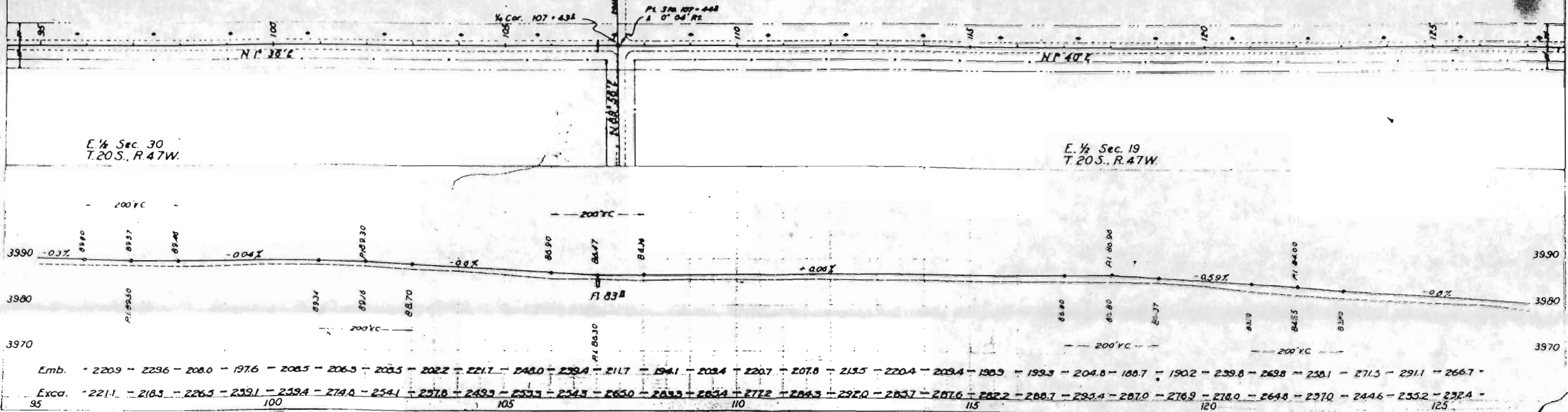


E. 1/2 Sec. 30. T. 20S., R. 47W.



N.W. 1/4 Sec. 30
T. 20S., R. 47W.

W. 1/2 Sec. 19
T. 20S., R. 47W.

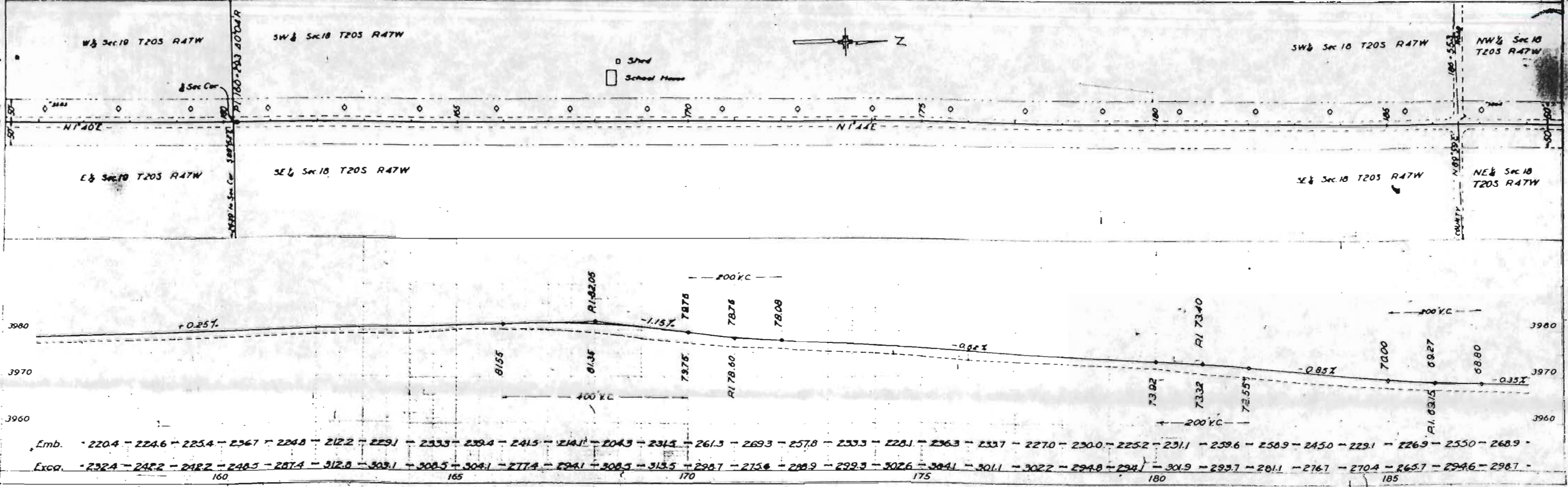
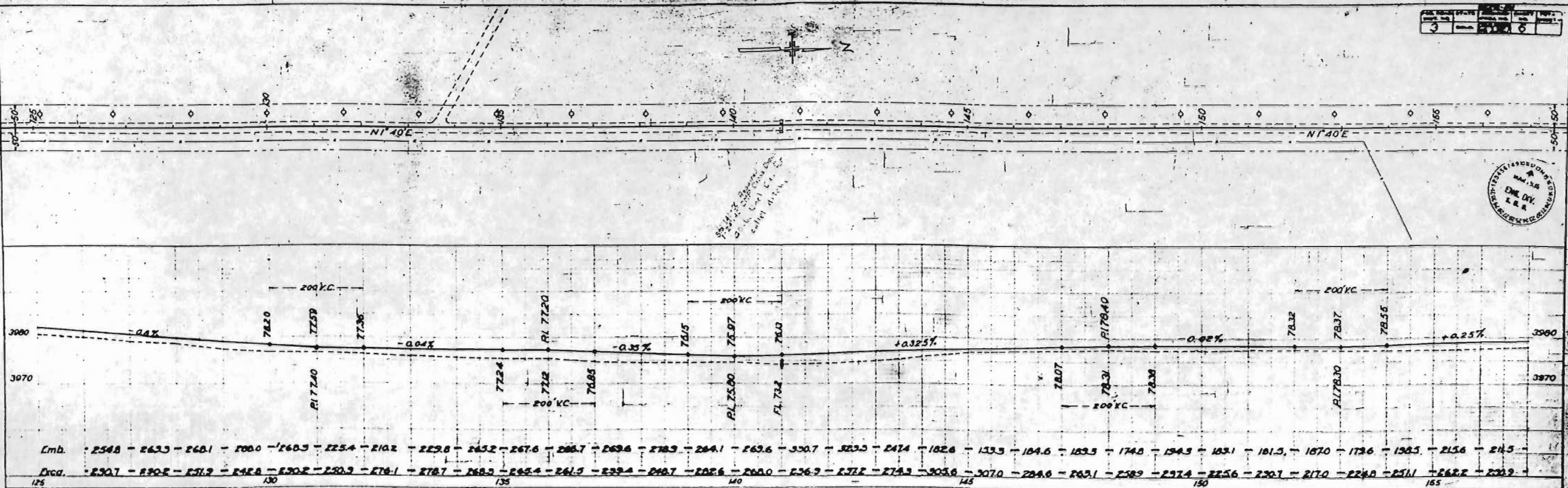


E. 1/2 Sec. 30
T. 20S., R. 47W.

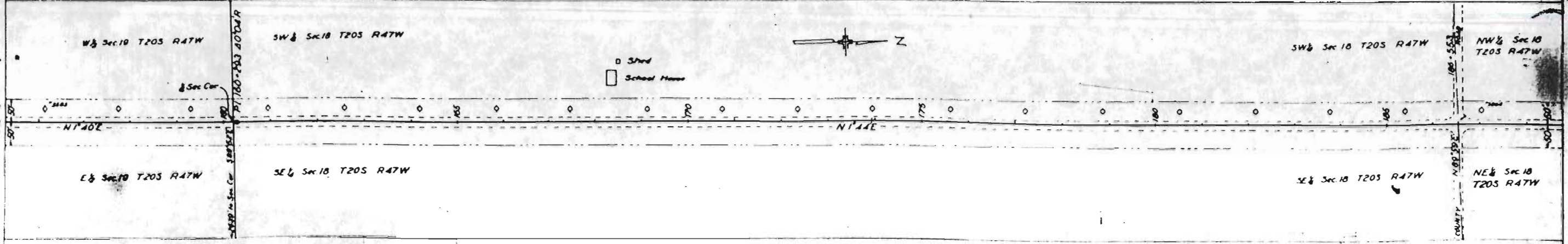
E. 1/2 Sec. 19
T. 20S., R. 47W.

DATE	BY	SCALE	PROJECT
3		6	

PL 1112
 1/2" = 100'
 1" = 200'



PLAN
 1" = 200'



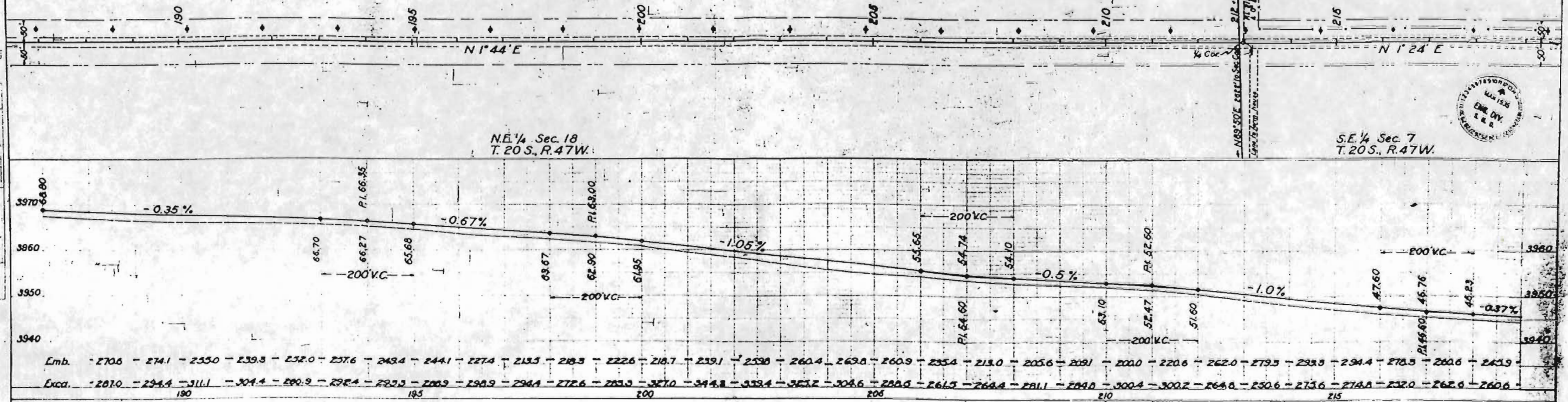
PLAN
 COUNTY OF ...
 ENGINEER ...
 DATE ...

NW 1/4 Sec 18
 T.20S. R.47W.

SW 1/4 Sec 7
 T.20S. R.47W.

NE 1/4 Sec 18
 T.20S. R.47W.

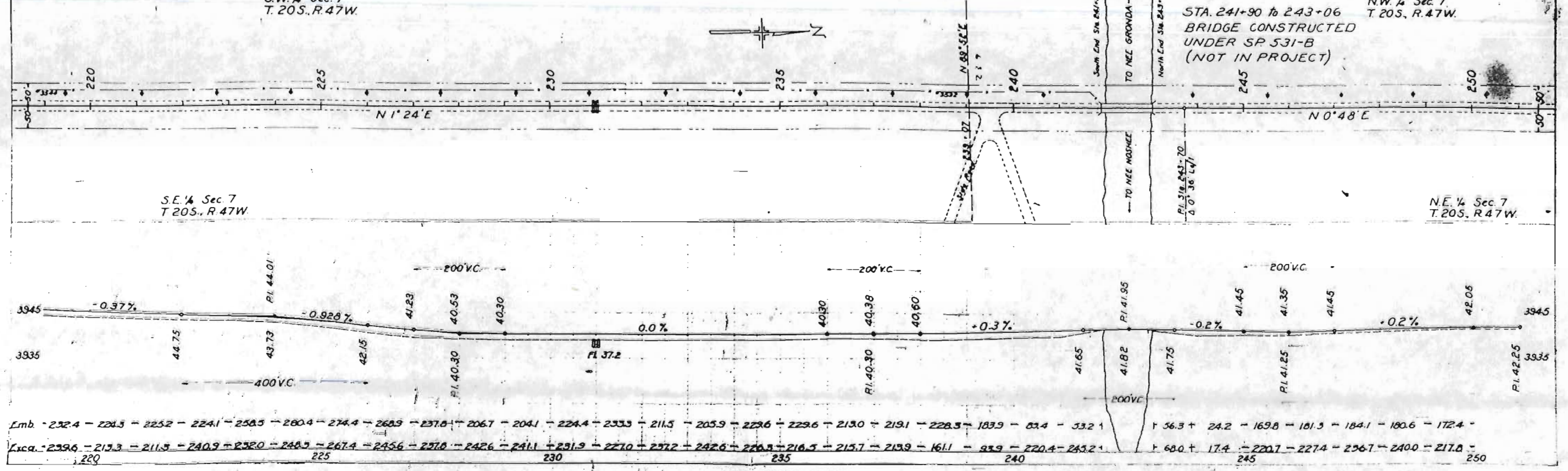
SE 1/4 Sec 7
 T.20S. R.47W.



SW 1/4 Sec 7
 T.20S. R.47W.

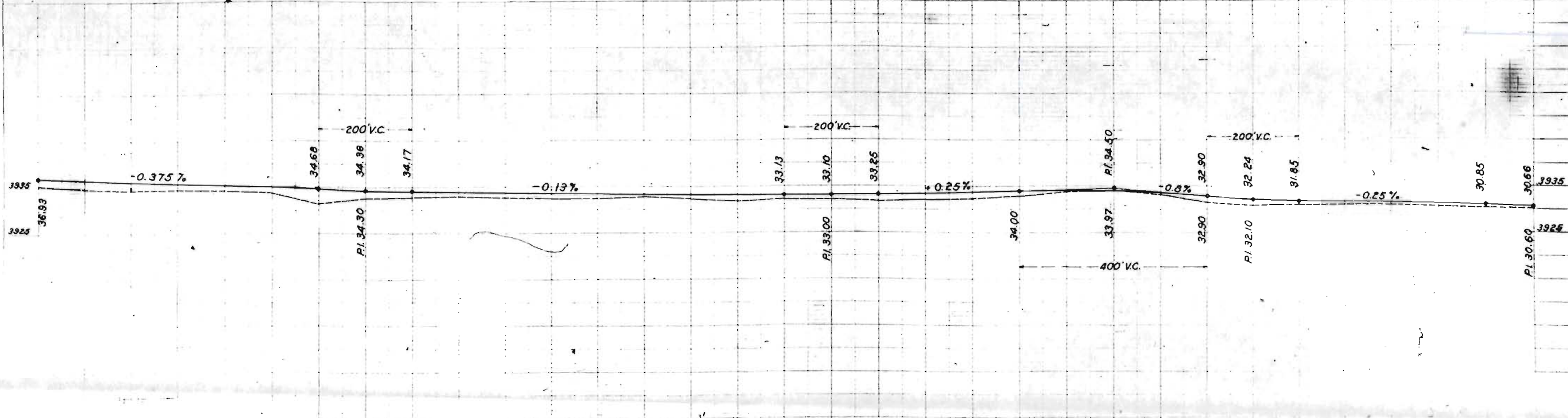
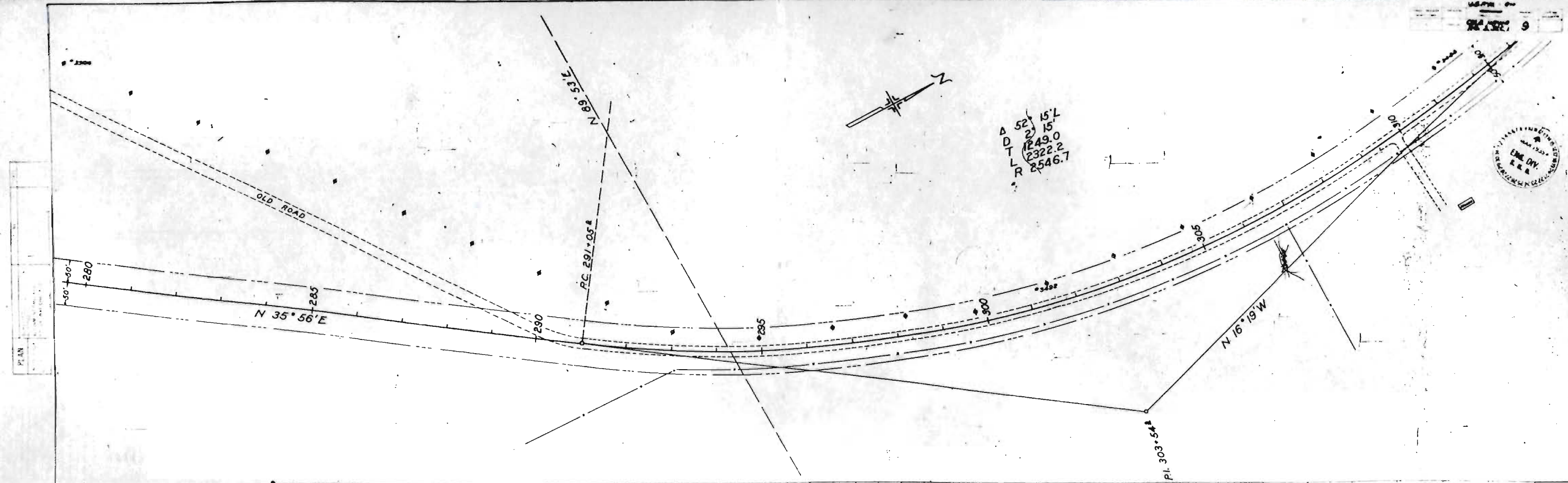
NW 1/4 Sec 7
 T.20S. R.47W.

STA. 241+90 to 243+06
 BRIDGE CONSTRUCTED
 UNDER SP 531-B
 (NOT IN PROJECT)



SE 1/4 Sec 7
 T.20S. R.47W.

NE 1/4 Sec 7
 T.20S. R.47W.



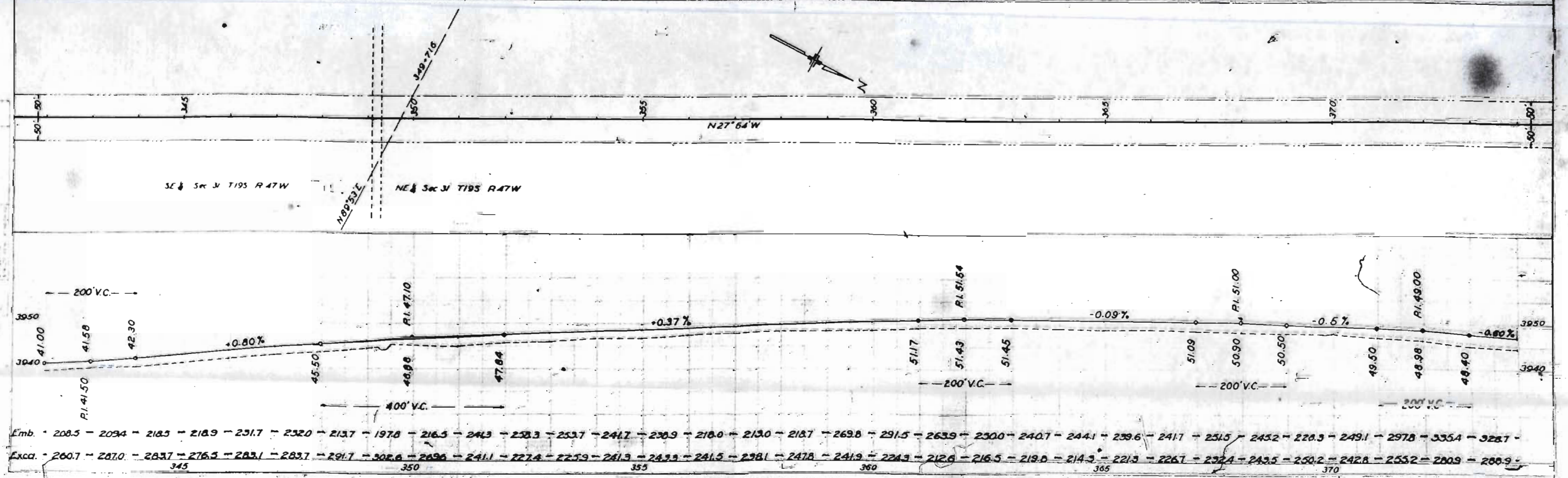
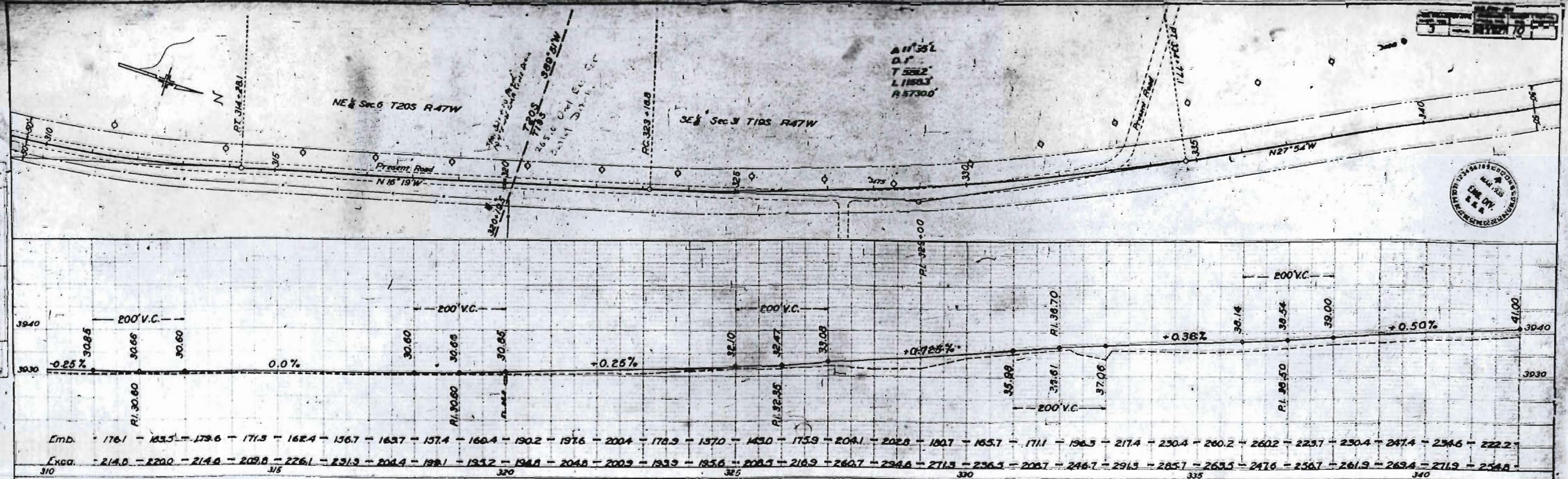
Emb.	-207.2	-165.2	-104.1	-235.9	-245.9	-243.5	-2320	-227.0	-229.1	-218.9	-216.7	-203.6	-203.6	-218.5	-220.9	-219.6	-242.2	-250.6	-237.6	-218.9	-157.8	-80.9	-91.1	-188.7	-276.9	-304.3	-273.6	-221.1	-174.1	-169.8
Exca.	-198.5	-203.5	-218.4	-243.7	-255.2	-254.4	-238.1	-231.1	-263.5	-262.4	-256.5	-243.7	-225.2	-225.9	-246.7	-239.1	-252.0	-219.6	-208.1	-229.3	-203.9	-351.3	-315.4	-256.7	-198.5	-187.6	-223.5	-222.4	-210.9	-213.3
	280			285					290					295							300			305					310	

SECTION 10

A1135L
D.P.
T 562
L 1803
R 5730



PLAN
SECTION 10
D.P.
T 562
L 1803
R 5730



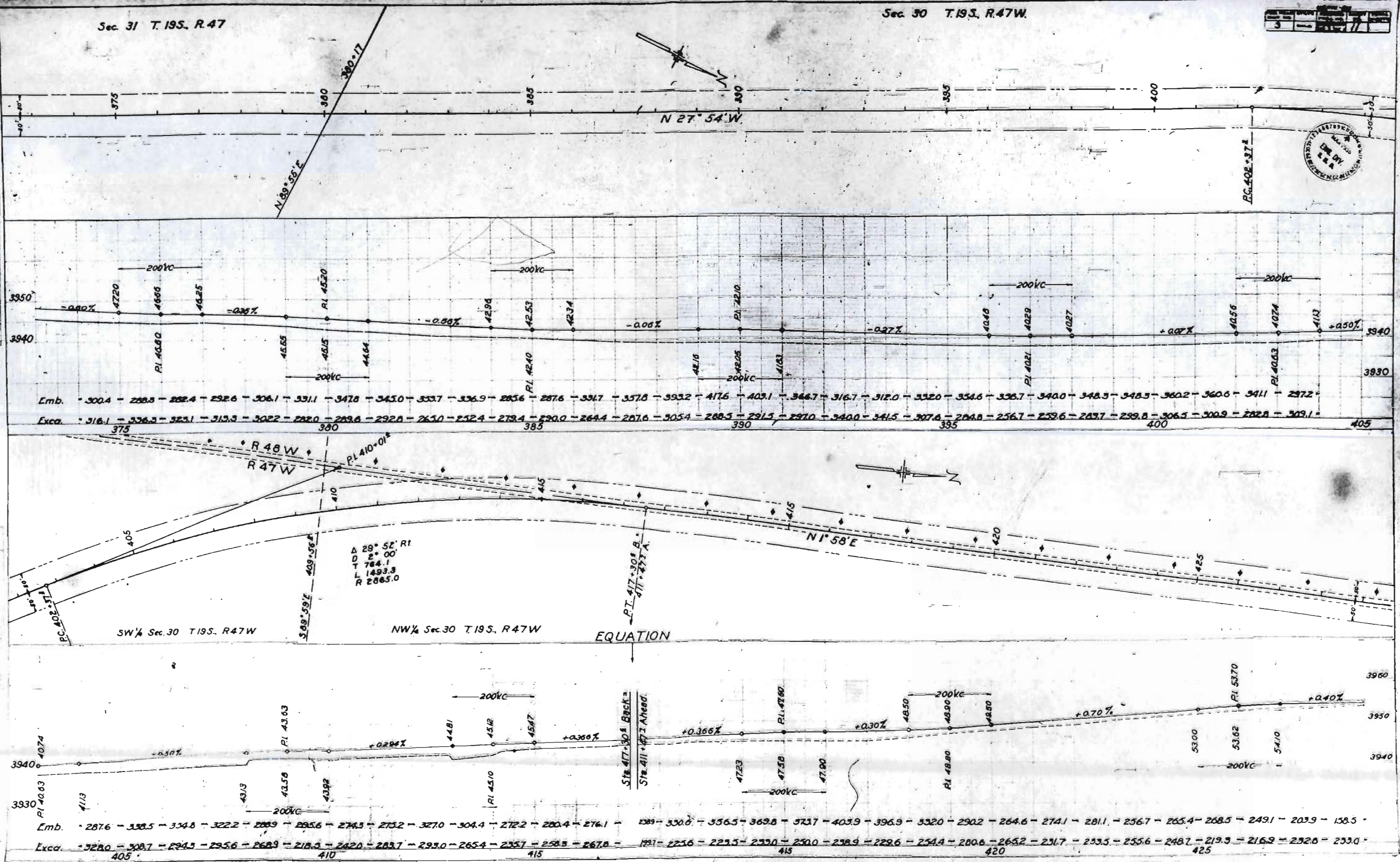
SCALE: HORIZONTAL 1" = 100' VERTICAL 1" = 10'

Sec 31 T.19S. R.47

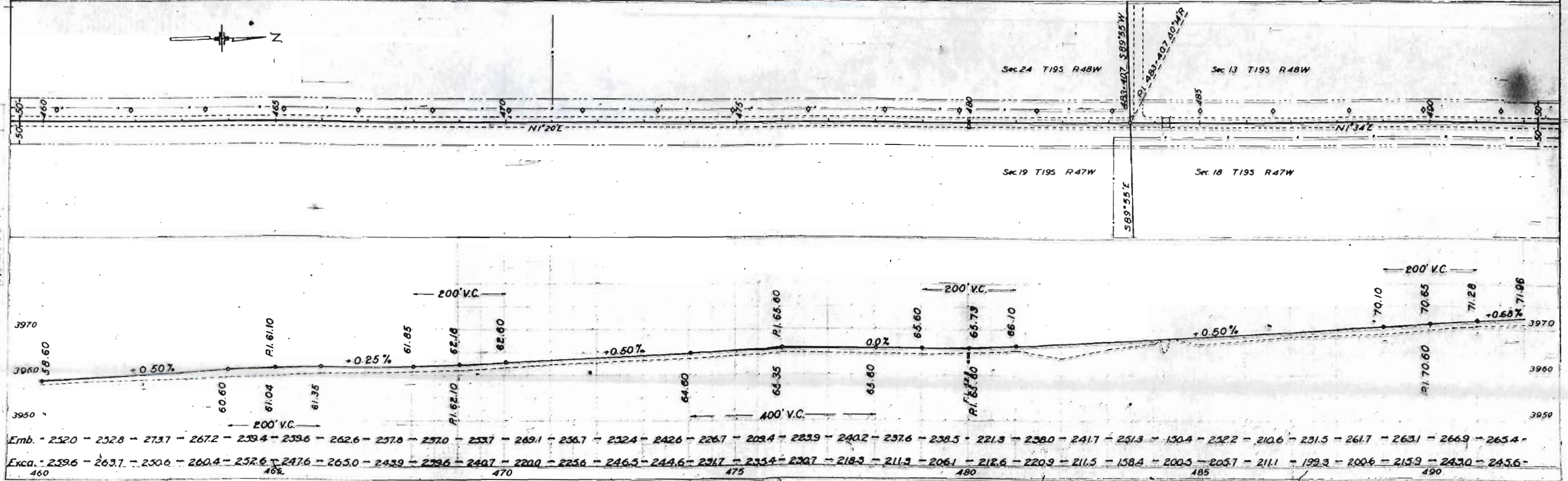
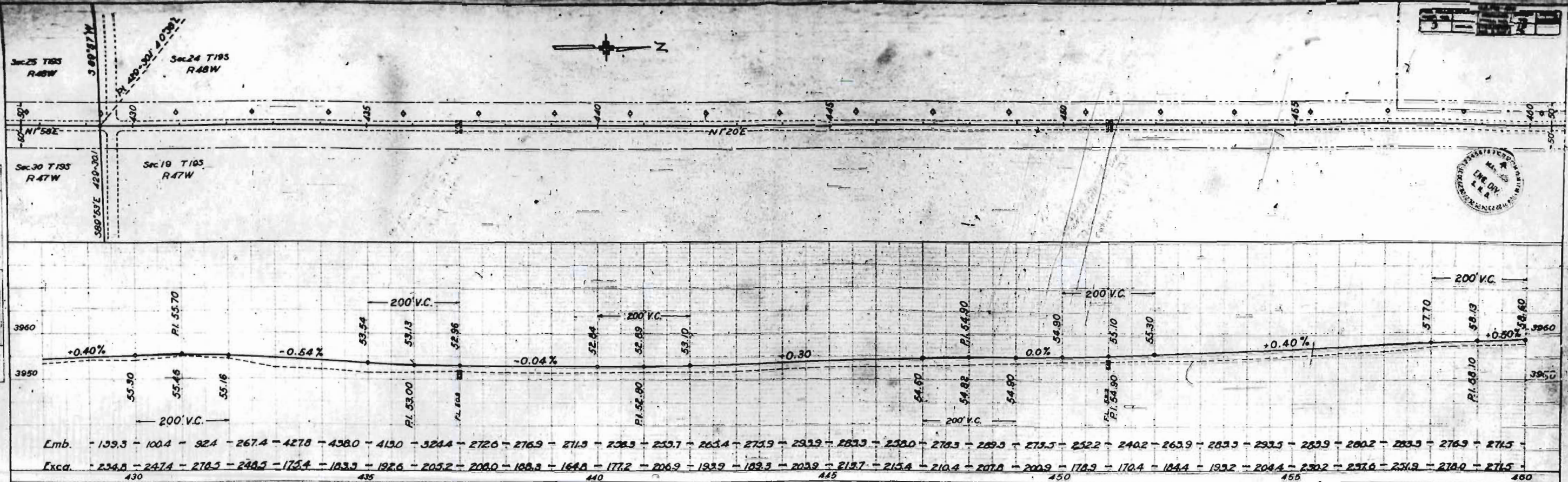
Sec 30 T.19S. R.47W

DATE	3-17-77
BY	
CHECKED	
SCALE	1" = 100'

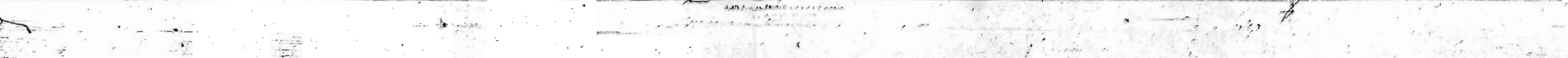
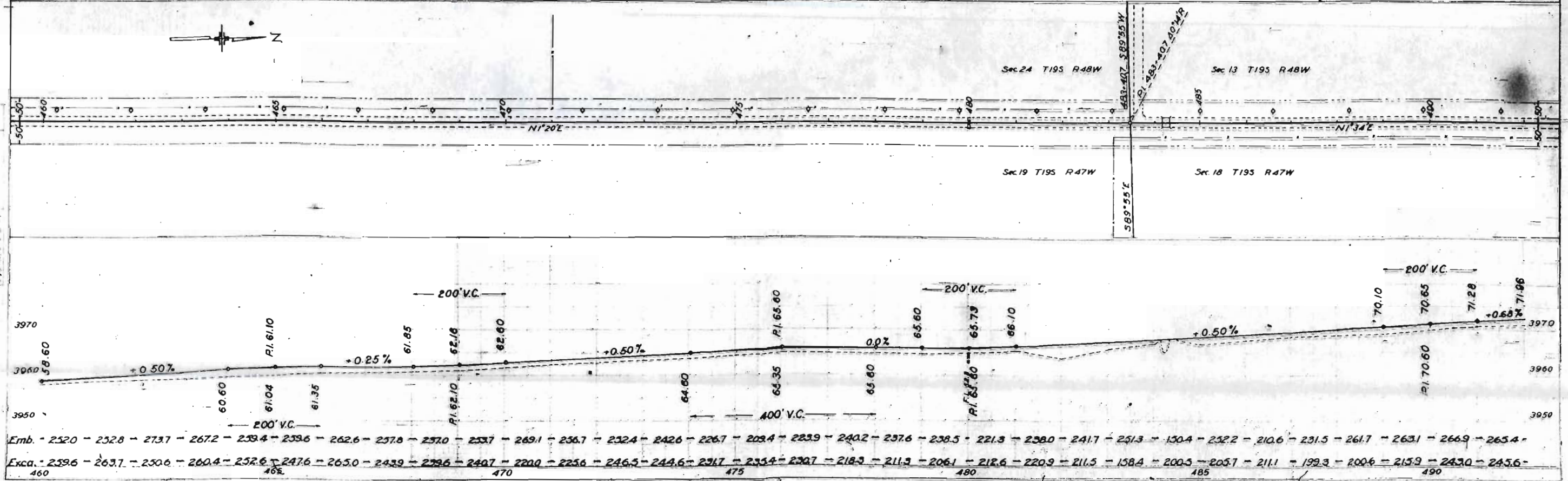
PLAN
 1. ALL DISTANCES ARE IN FEET UNLESS OTHERWISE NOTED.
 2. ALL ANGLES ARE IN DEGREES UNLESS OTHERWISE NOTED.
 3. ALL CURVES ARE TO BE CONSTRUCTED AS SHOWN.



PLAN
 PROFILE
 NOTE BOOK
 AT ST. LOUIS, MISSOURI



PROFILE
 NOTE BOOK
 AT ST. LOUIS, MISSOURI



SE 1/4 Sec. 13 T195 R47W

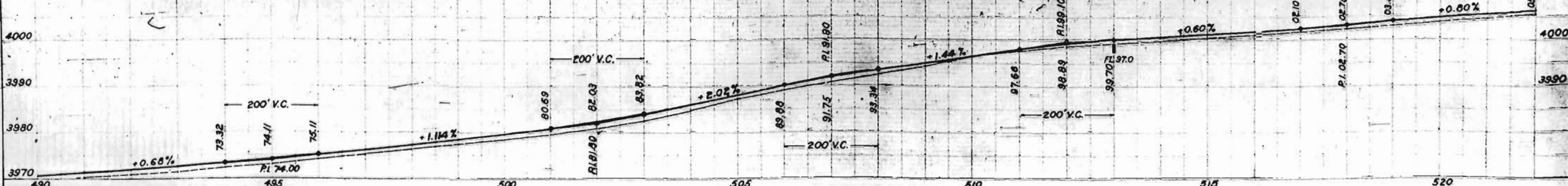
NW 1/4 Sec. 18 T195 R47W

SW 1/4 Sec. 18 T195 R47W

NW 1/4 Sec. 18 T195 R47W

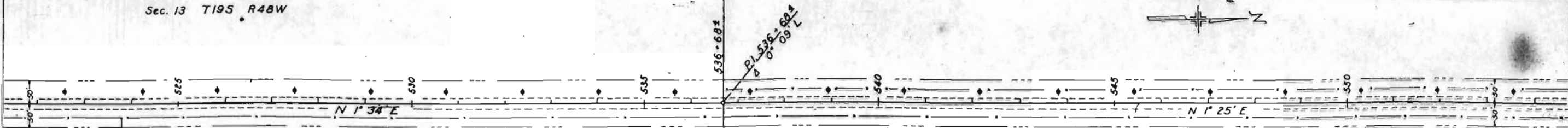
Emb. - 258.7 - 255.9 - 244.4 - 249.4 - 263.7 - 259.8 - 250.9 - 237.4 - 237.4 - 310.9 - 291.3 - 303.6 - 310.7 - 262.4 - 260.4 - 243.7 - 244.9 - 263.1 - 273.6 - 250.0 - 200.0 - 193.5 - 201.5 - 206.7 - 231.5 - 255.9 - 253.7 - 263.1 - 290.4 - 286.7 -

Excd. - 232.4 - 240.2 - 258.0 - 242.6 - 246.3 - 280.0 - 284.8 - 276.7 - 273.3 - 238.0 - 333.1 - 361.7 - 311.2 - 295.0 - 283.1 - 330.9 - 333.3 - 432.0 - 471.3 - 493.3 - 525.0 - 253.3 - 234.3 - 257.8 - 268.0 - 269.6 - 250.2 - 258.9 - 275.2 - 283.9 - 401.0



Sec. 13 T195 R48W

Sec. 12 T195 R48W

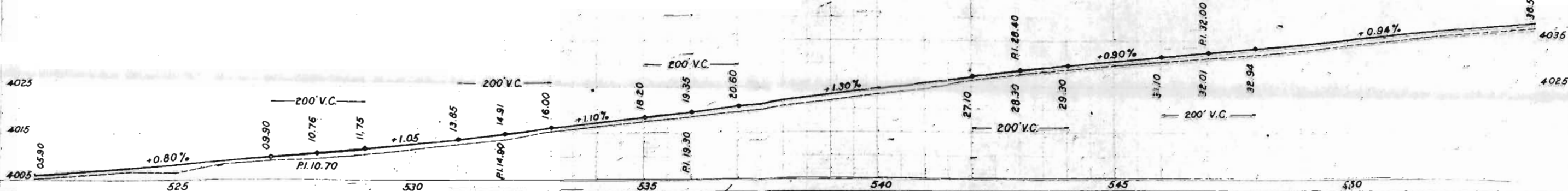


Sec. 18 T195 R47W

Sec. 7 T195 R47W

Emb. - 270.7 - 255.6 - 251.3 - 201.7 - 194.3 - 223.3 - 250.6 - 256.3 - 271.1 - 304.3 - 300.2 - 282.8 - 286.9 - 278.1 - 273.6 - 281.5 - 286.1 - 303.6 - 316.5 - 284.1 - 243.0 - 248.3 - 254.8 - 251.3 - 250.0 - 263.1 - 282.6 - 278.5 - 280.2 - 295.2 - 292.8 - 293.0 -

Excd. - 275.8 - 262.6 - 264.4 - 236.9 - 251.3 - 252.6 - 256.7 - 266.9 - 296.9 - 312.4 - 300.4 - 293.3 - 291.3 - 290.4 - 264.1 - 264.1 - 233.9 - 302.0 - 310.7 - 330.1 - 331.7 - 346.1 - 316.1 - 285.9 - 274.4 - 253.3 - 230.5 - 260.7 - 275.6 - 265.4 - 278.3 - 222.7 - 404.5



PLAN
SURVEY
PARTIAL
ADJUSTMENT
NOTE BOOK
BY
DATE

PROFILE
SURVEY
PARTIAL
ADJUSTMENT
NOTE BOOK
BY
DATE



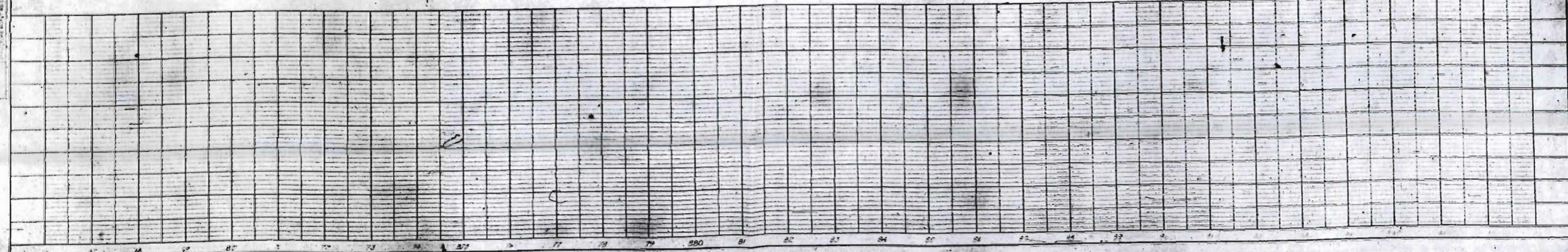
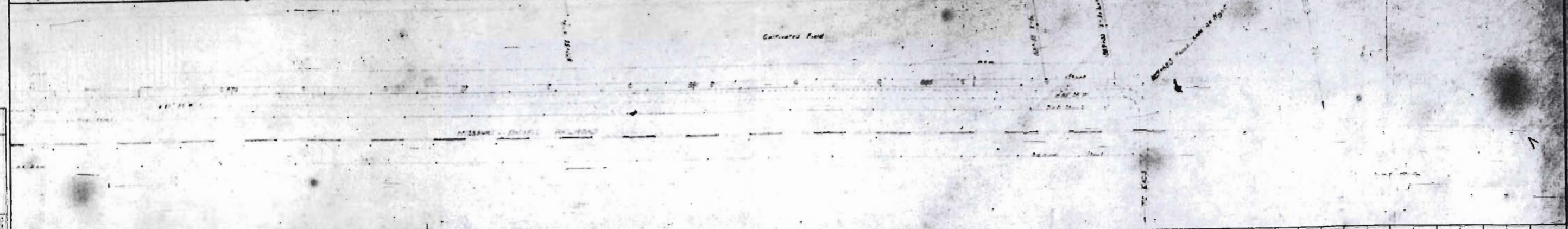
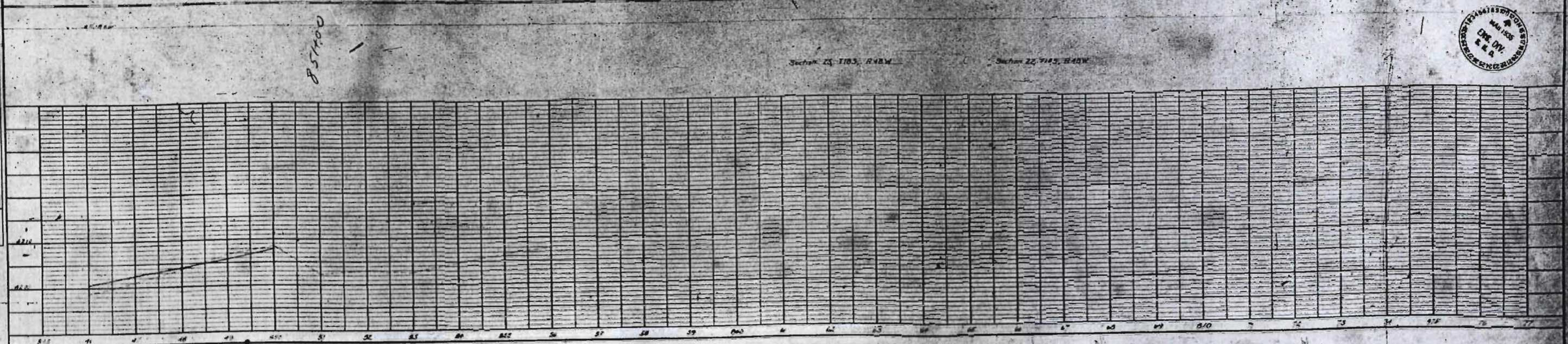
DATE	NO.	BY

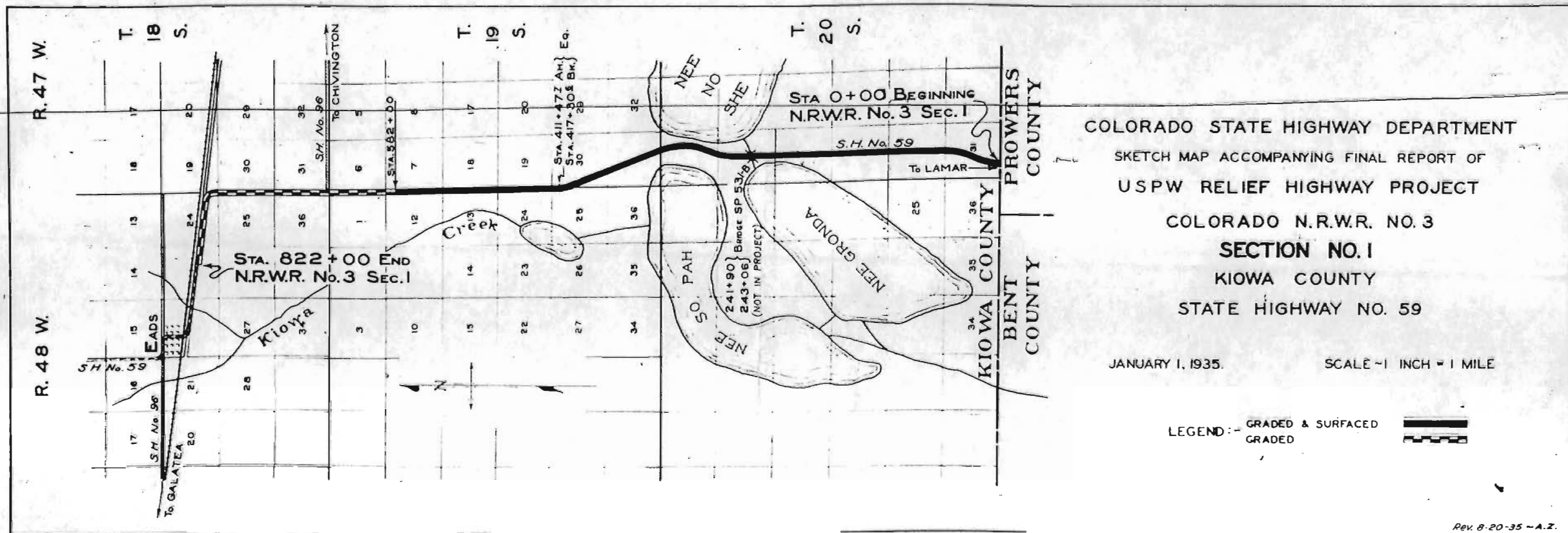


PLAN
 DISTRICT OF COLUMBIA
 ENGINEERING DIVISION
 1915

PROFILE
 DISTRICT OF COLUMBIA
 ENGINEERING DIVISION
 1915

857400



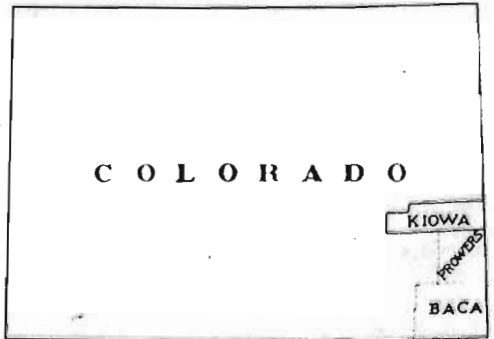
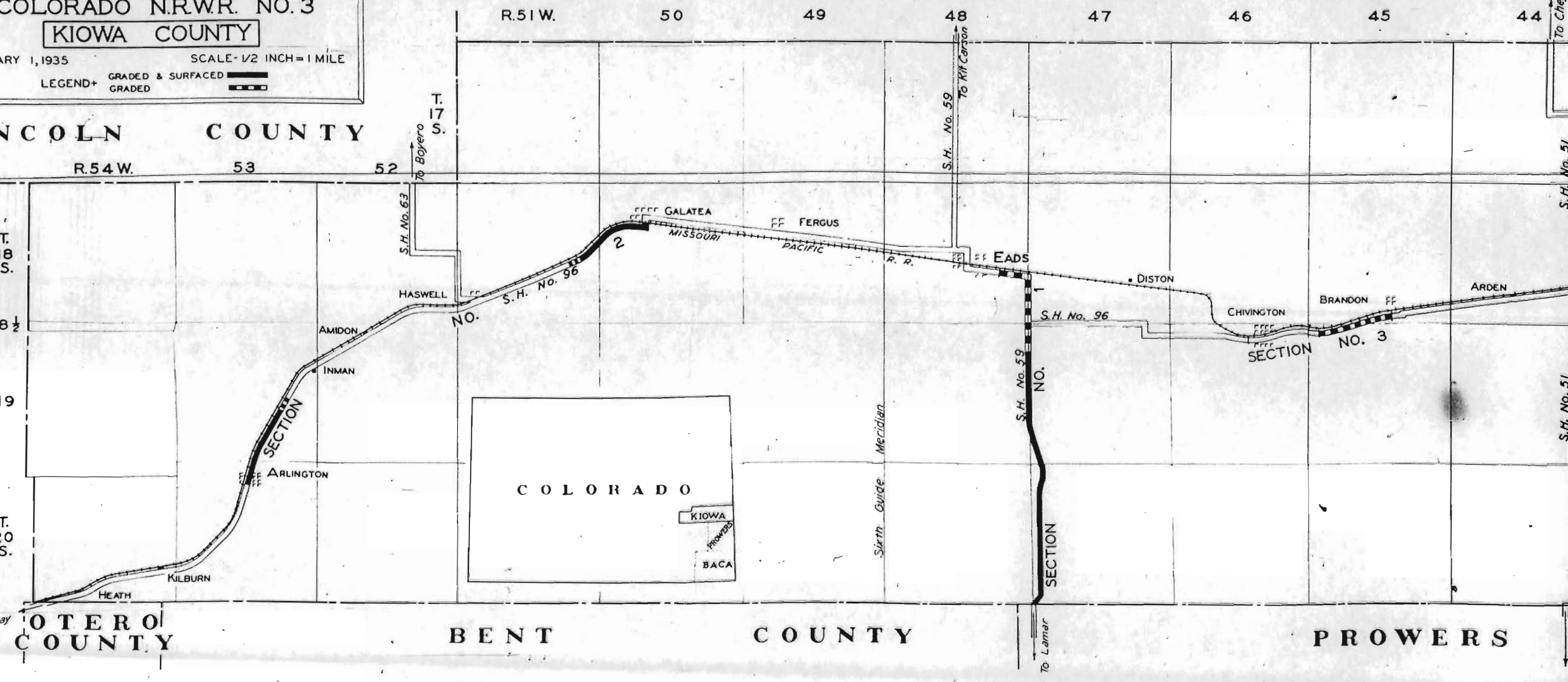


COLORADO STATE HIGHWAY DEPARTMENT
 COUNTY MAP ACCOMPANYING FINAL REPORT OF
 U.S.P.W.-RELIEF HIGHWAY PROJECT
 COLORADO N.R.W.R. NO. 3
KIOWA COUNTY
 JANUARY 1, 1935 SCALE-1/2 INCH=1 MILE
 LEGEND+ GRADED & SURFACED
 GRADED

CHEYENNE COUNTY

LINCOLN COUNTY

CROWLEY COUNTY



BENT COUNTY

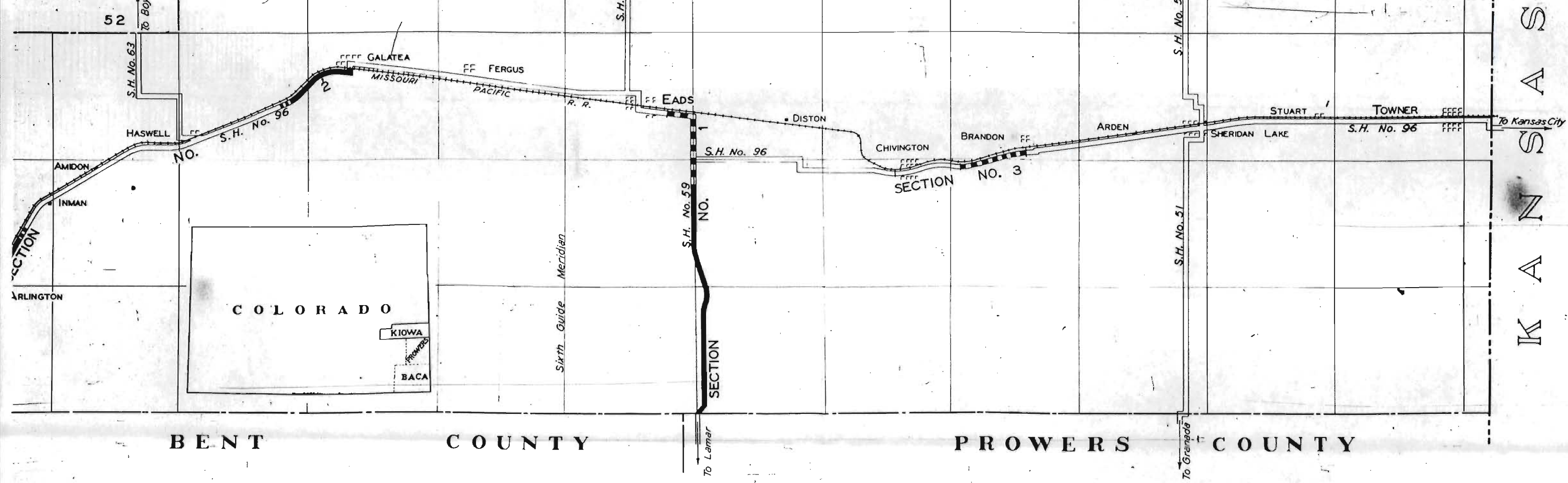
PROWERS

DEPARTMENT OF
ELECT
0.3
SCALE = 1 MILE

CHEYENNE COUNTY

R. 51 W. 50 49 48 47 46 45 44 43 R. 42 W.

T. 17 S.



KANSAS

BENT COUNTY PROWERS COUNTY

R.48 W. 1
R.47 W. 6

T.21 S.
T.20 S.

0100 BEGINNING OF N.C.S.S.

COUNTY
COUNTY

R.48 W.
R.47 W.

STATE OF COLORADO

31

30

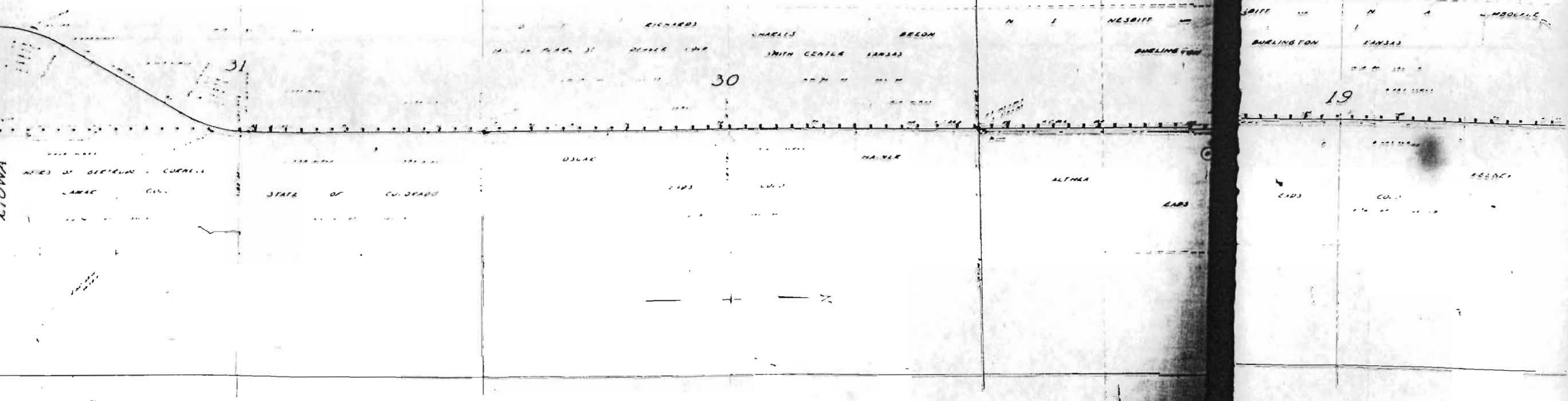
19

PROWERS
IOWA

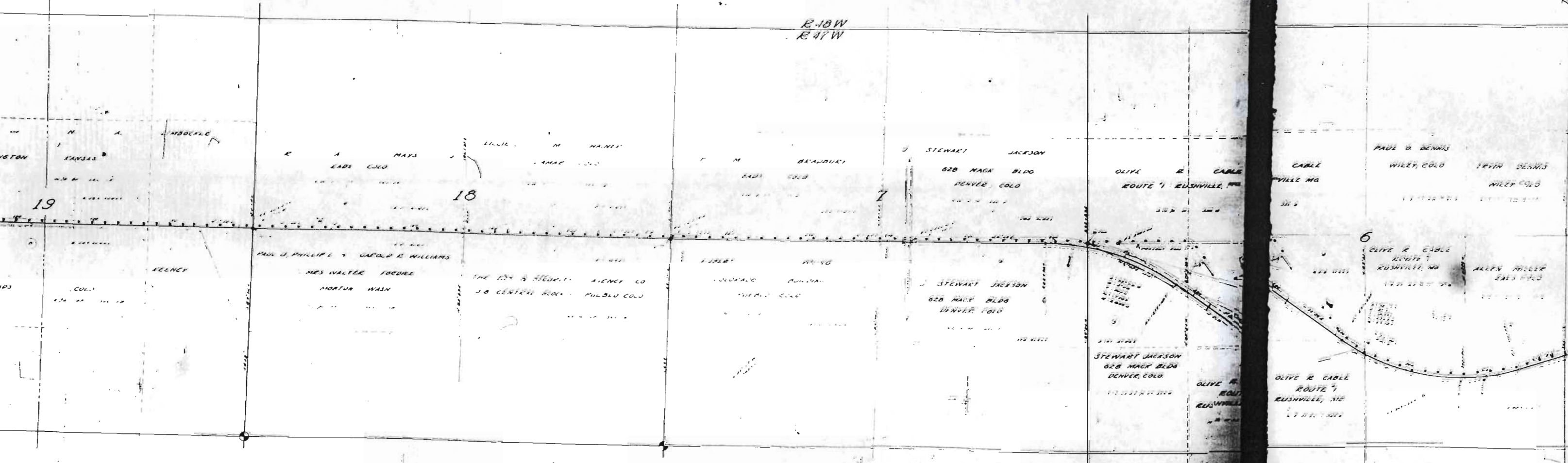
15 CORNER LINE

ATLAW-22M DAM WOB
NOV 3-1

R.30-1



R-18W
R-47W



19

18

7

6

36

25

24

R 48 W

T 20 S
T 19 S

JOSIE E. HOLLAND
1893

F. E. FYLES
1893

STATE OF

COLORADO

STATE OF

COLORADO

STATE

JOHN C. LYON
GRAND VIEW WASH.

STATE OF COLORADO

GRAND VIEW WASH.

JOHN C. LYON
GRAND VIEW WASH.

R 47 W

PAUL O DENNIS
WILEY, COLO.

IRVIN DENNIS
WILEY, COLO.

Y

6

31

30

19

OLIVE R. CABLE
ROUTE 1
RUSHVILLE, MO.

ALLEN MILLER
CALO, COLO.

WOLFE M. CARPENTER
CALO, COLO.

STATE OF COLORADO

OLIVE R. CABLE
ROUTE 1
RUSHVILLE, MO.

OLIVE R. CABLE
ROUTE 1
RUSHVILLE, MO.

OLIVE R. CABLE
ROUTE 1
RUSHVILLE, MO.

OLIVE R. CABLE
ROUTE 1
RUSHVILLE, MO.

OLIVE R. CABLE
ROUTE 1
RUSHVILLE, MO.

OLIVE R. CABLE
ROUTE 1
RUSHVILLE, MO.

OLIVE R. CABLE
ROUTE 1
RUSHVILLE, MO.

OLIVE R. CABLE
ROUTE 1
RUSHVILLE, MO.

OLIVE R. CABLE
ROUTE 1
RUSHVILLE, MO.

OLIVE R. CABLE
ROUTE 1
RUSHVILLE, MO.

OLIVE R. CABLE
ROUTE 1
RUSHVILLE, MO.

OLIVE R. CABLE
ROUTE 1
RUSHVILLE, MO.

OLIVE R. CABLE
ROUTE 1
RUSHVILLE, MO.

OLIVE R. CABLE
ROUTE 1
RUSHVILLE, MO.

OLIVE R. CABLE
ROUTE 1
RUSHVILLE, MO.

OLIVE R. CABLE
ROUTE 1
RUSHVILLE, MO.

OLIVE R. CABLE
ROUTE 1
RUSHVILLE, MO.

OLIVE R. CABLE
ROUTE 1
RUSHVILLE, MO.

OLIVE R. CABLE
ROUTE 1
RUSHVILLE, MO.

OLIVE R. CABLE
ROUTE 1
RUSHVILLE, MO.

OLIVE R. CABLE
ROUTE 1
RUSHVILLE, MO.

OLIVE R. CABLE
ROUTE 1
RUSHVILLE, MO.

OLIVE R. CABLE
ROUTE 1
RUSHVILLE, MO.

OLIVE R. CABLE
ROUTE 1
RUSHVILLE, MO.

OLIVE R. CABLE
ROUTE 1
RUSHVILLE, MO.

OLIVE R. CABLE
ROUTE 1
RUSHVILLE, MO.

OLIVE R. CABLE
ROUTE 1
RUSHVILLE, MO.

OLIVE R. CABLE
ROUTE 1
RUSHVILLE, MO.

OLIVE R. CABLE
ROUTE 1
RUSHVILLE, MO.

OLIVE R. CABLE
ROUTE 1
RUSHVILLE, MO.

OLIVE R. CABLE
ROUTE 1
RUSHVILLE, MO.

24

13

12

13

R 48 W

F. L. FILES

J. C. GRASS VIEW

LYONS WASH

MABEL

FORD

EARTHENITE COLO

JOSEPH

345 E WALNUT ST

WALTON

SPRINGFIELD MO

F. E. DARGATE

C. M. DARGATE

BIRDSLEY

243

JOHN W

373 OFFSHORE ST

MILLHART

DENVER, COLO

JOHN

COLO

JOSEPH

345 E WALNUT ST

COLORADO

LOUIE

NORRIS

ADILEY

FORD

100 N MAIN - LITTLE RIVER 24034

W W

HAYS

2433 COLO

W W

R 47 W

19

18

7

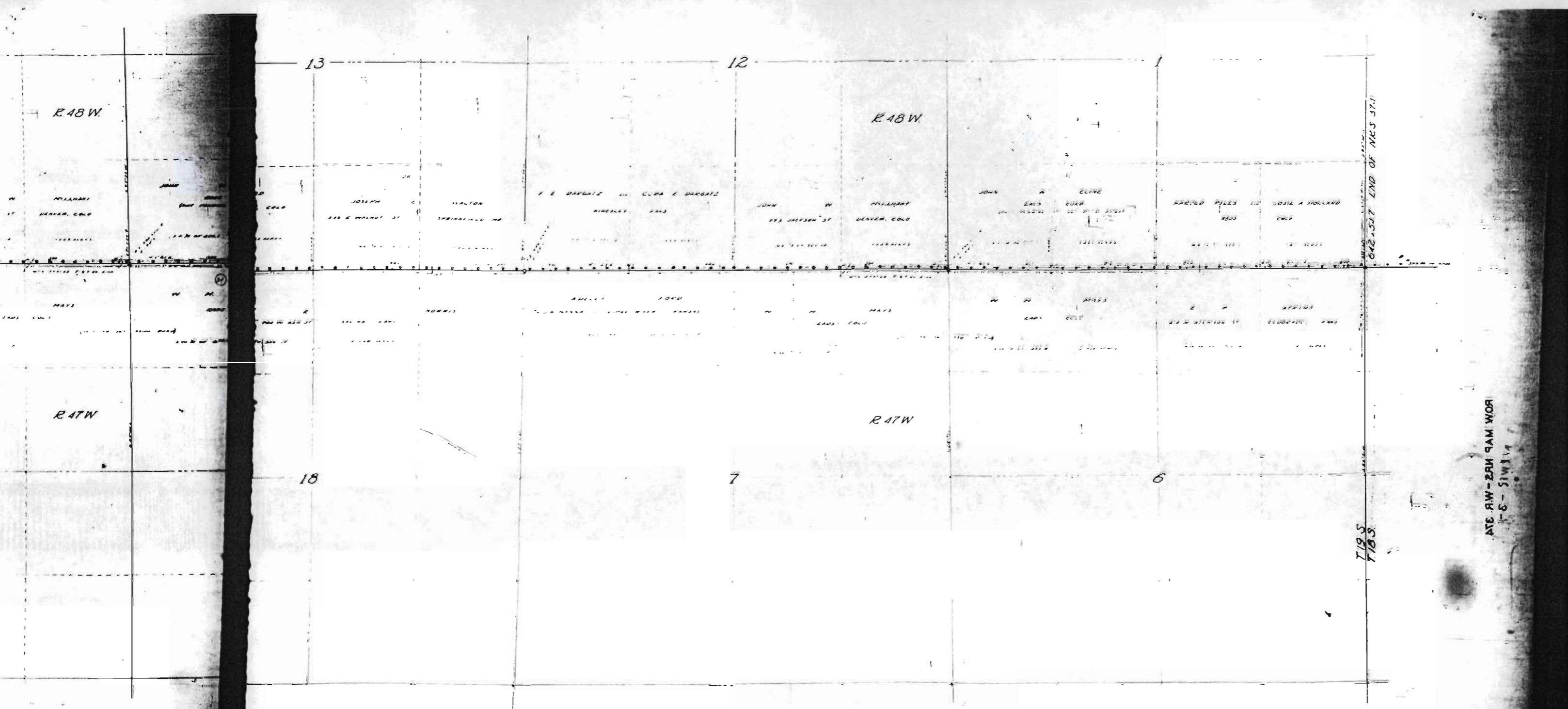
18

The Colorado State Highway Dept.
 R.O.W. MAP OF
 N.R.S. 374 - STATE ROAD NO 59
 KIOWA COUNTY

EXTENDING FROM FRONTIER-KIOWA COUNTY LINE
 NORTH TO STATE ROAD NO 59

SCALE 1"=1000'
 OCT 28, 1933

DRAWN BY ALL
 TRACED BY LEE



Highway Dept.
 OF
 ROAD NO 59
 Y

The Colorado State Highway Dept.
 R.O.W. MAP OF
 N.R.S. 374 - STATE ROAD NO 59
 KIOWA COUNTY

EXTENDING FROM SECTION 12 TO SECTION 13
 NORTH TO STATE ROAD NO 59

DRAWN BY AAA
 TRACED BY AAA

SCALE 1"=100'
 OCT 28, 1935

T19S
 R48W

T18S
 R47W

STATE R.W. - 220' P.A.M. WOR
 1-5-31W 1/4