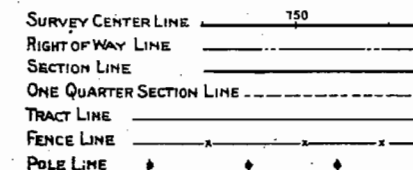


# COLORADO STATE HIGHWAY DEPARTMENT

## PLAN AND PROFILE OF PROPOSED P.W.A. DOCKET COLO. 804-D PROJECT NO. 211-F STATE HIGHWAY NO. 13 MOFFAT COUNTY

### CONVENTIONAL SIGNS

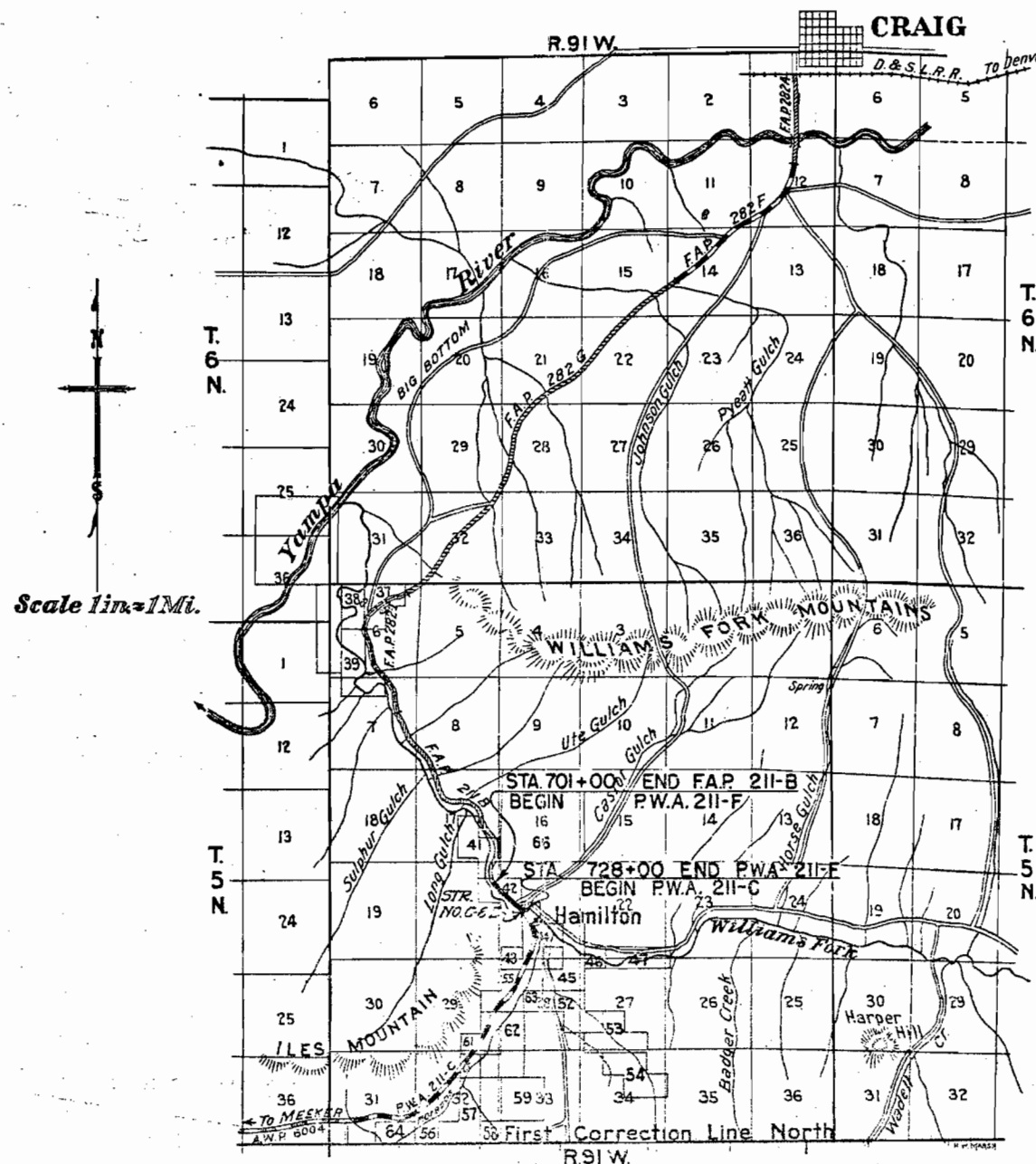


### INDEX OF SHEETS

1. SKETCH MAP AND TITLE SHEET
2. TYPICAL SECTION AND SUMMARY OF QUANTITIES
3. LIST OF STRUCTURES
- 4-5. DETAILS OF BRIDGE STA. 721+
6. STANDARD HEADWALLS FOR C.M.P. CULVERTS M-102-E
7. " WIRE CABLE GUARD FENCE M-20-A
8. " WIRE FENCE (TREATED WOOD POSTS) AND MARKER POSTS M-24-F
9. " STRUCTURE NUMBER LETTERING M-10-A
10. " METHODS FOR SUPERELEVATION AND WIDENING OF CURVES M-1-B
11. TYPICAL SIDE APPROACH ROADS AND ROADWAY CONSTRUCTION TRAFFIC SIGNS M-2-BX
- 12-13. PLAN AND PROFILE SHEETS
- 14-24. GROSS SECTION SHEETS *See Appendix Cross Sections*

SCALES ON ORIGINAL TRACINGS  
 ON PLAN, 1 IN. = 100 FT.  
 ON PROFILE 1 IN. = 100 FT. HORIZONTAL  
 1 IN. = 10 FT. VERTICAL  
 GRADE LINE ON PROFILE IS SHOWN AS GRADE OF FINISHED ROAD  
 GROSS LENGTH OF PROJECT } 2700 FEET = 0.511 MI.  
 NET LENGTH OF PROJECT }

FILE COPY  
Do Not Remove



**NOTE**  
 It is recommended that bidders on this project go over the plan details with one of the following field representatives of this department.  
 H.L. JENNESS DIV. ENGINEER GLENWOOD SPRINGS.  
 J.A. BURTON RES. MEeker, COLORADO.

RECOMMENDED FOR APPROVAL 4-13-37  
*J. Maloney*  
 ASSISTANT ENGINEER  
 APPROVED *Chas. Bail*  
 STATE HIGHWAY ENGINEER  
 RECOMMENDED FOR APPROVAL  
 DIST. ENG. BUREAU PUBLIC ROADS  
 RECOMMENDED FOR APPROVAL  
 CHIEF ENGR. BUREAU PUBLIC ROADS  
 APPROVED  
 DIRECTOR BUREAU PUBLIC ROADS

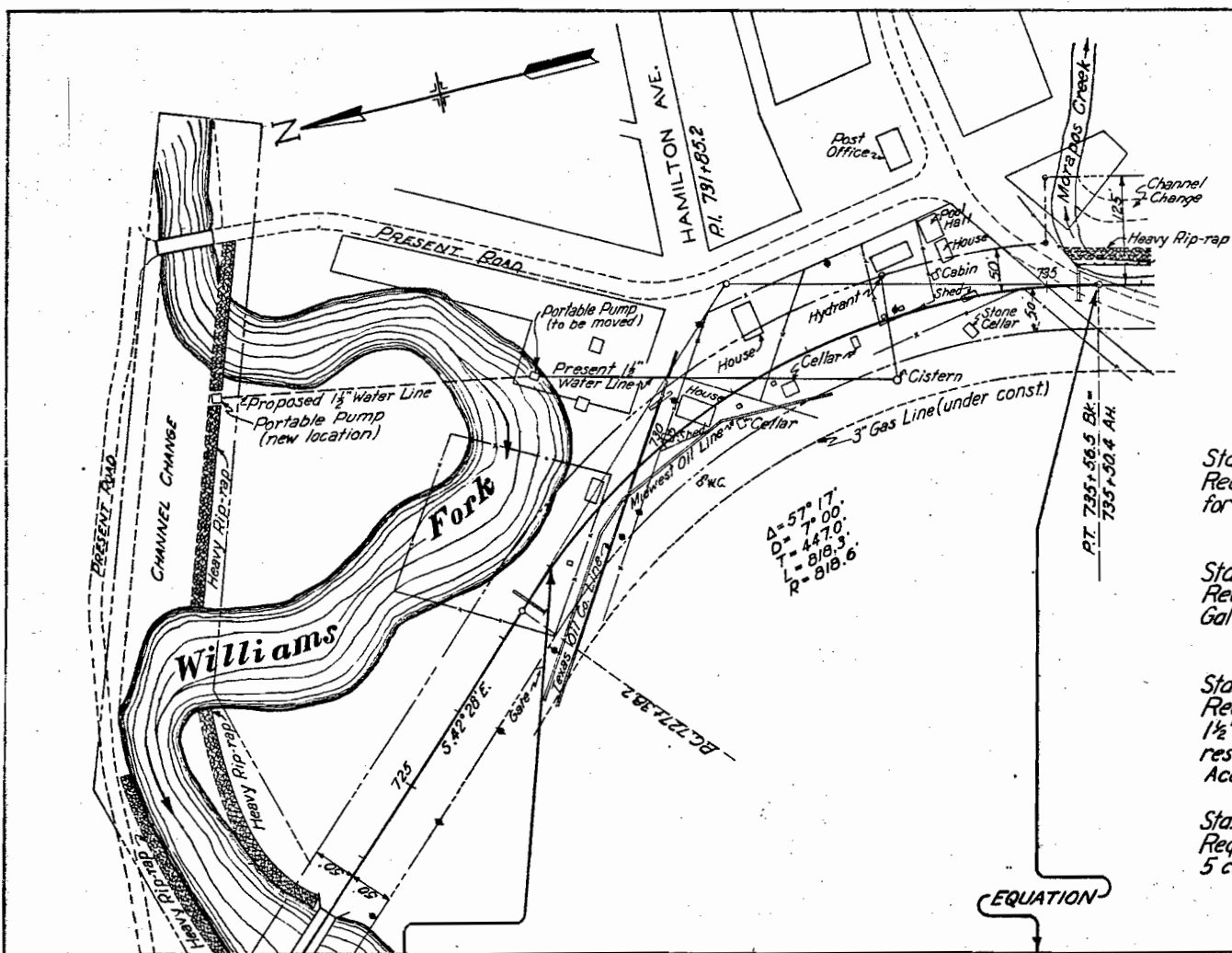
MICROFILMED



FED. ROAD DIST. NO.	STATE	P. W. A. PROJ. NO.	SHEET NO.	TOTAL SHEETS
3	COLO.	211-F	13	

PLAN  
 DATE  
 BY  
 CHECKED  
 APPROVED  
 NO.

PROFILE  
 DATE  
 BY  
 CHECKED  
 APPROVED  
 NO.



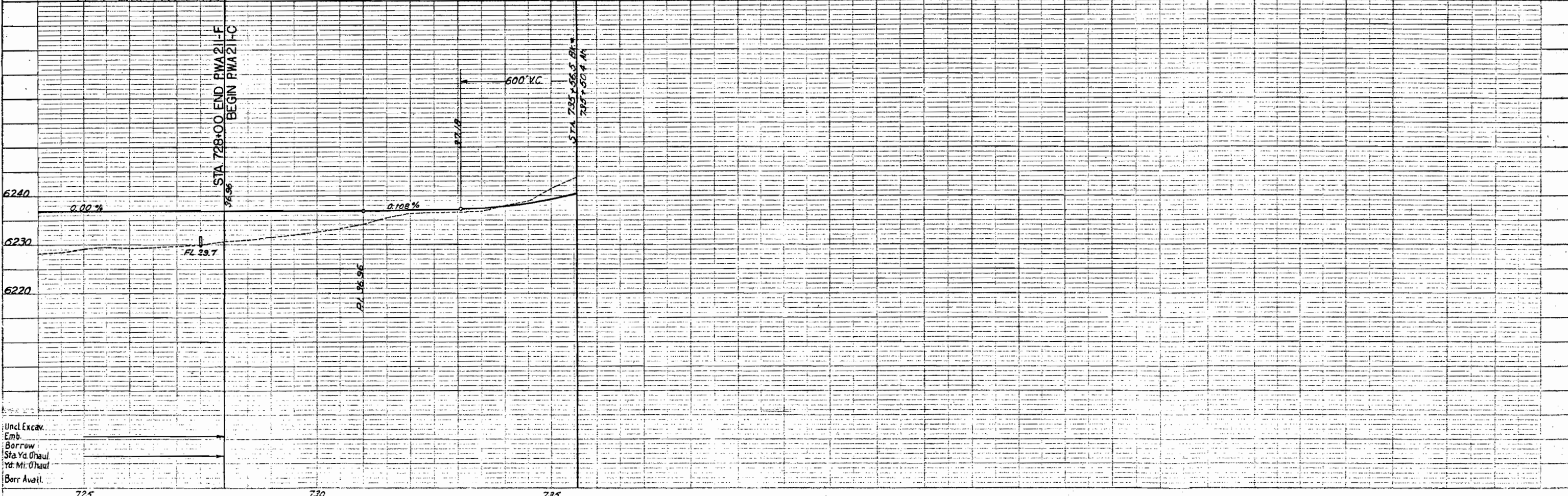
Sta 727+00 -  
 Reqd. 150 cu. yds. Emb.  
 for Rd. Appr. Rt.

Sta. 727+ to 729+ -  
 Reqd. 400 lin. ft. 1 1/2" Standard  
 Galv. Pipe for water line, Lt.

Sta. 728+ to 733+ -  
 Reqd. remove & relay 300 ft.  
 1 1/2" pipe line. Also Reqd. remove &  
 reset Portable Pump, Lt. (FORCE  
 ACCOUNT.)

Sta. 727+50 -  
 Reqd. 24" x 54' C.M.P. cross culvert, &  
 5 cu. yds. Uncl. Excav. for ditches.

$\Delta = 57' 17"$   
 $D = 7' 00"$   
 $L = 447.0'$   
 $R = 818.3'$   
 $R = 818.6'$



Uncl. Excav.  
 Emb.  
 Borrow  
 Sta. Yd. Haul  
 Yd. Mi. Haul  
 Borr. Avail.

725

730

735