

FED. ROAD DIST. NO.	STATE	P.W.A. PROJ. NO.	SHEET NO.	TOTAL SHEETS
3	COLO.	409-B (I)	1	

*Delta - Paria*

INDEX OF SHEETS

- SHEET No. 1 SKETCH MAP & TITLE
- 2 TYPICAL SECTION & SUMMARY OF APPROXIMATE QUANTITIES
- 3&4 LIST OF STRUCTURES, FENCING REQ. & R.O.W. MARKERS
- 5 TO 8 DETAILS OF BRIDGE STA. 54+
- 9 TO 12 DETAILS OF BRIDGE STA. 137+
- 13 STANDARD NAME PLATE M 6 D
- 14 STANDARD HEADWALLS FOR C.M.P. CULVERTS M 102 E
- 15 CONCRETE BOX CULVERTS M 104 D
- 16 STANDARD SIPHON CORRUGATED GALV. IRON PIPE M 123 A
- 17 STANDARD TIMBER GUARD POSTS M 19 A
- 18 STANDARD SEMI-RIGID METAL PLATE GUARD FENCE M 21 B
- 19 STANDARD FLEXIBLE METAL PLATE GUARD FENCE M 22 B
- 20 STANDARD WIRE FENCES TREATED WOODEN POSTS & MARKER POSTS M 24 F
- 21 STANDARD STRUCTURE NUMBER LETTERING M 10 A
- 22 STANDARD METHODS FOR SUPERELEVATION & WIDENING OF CURVES M 1 B
- 23 TYPICAL SIDE APPROACH ROADS—ROADWAY CONSTRUCTION M 2 BX TRAFFIC SIGNS
- 24 TO 32 PLAN & PROFILE
- 33 TO 45 CROSS SECTIONS *see final Const X sect.*

# COLORADO STATE HIGHWAY DEPARTMENT

## PLAN AND PROFILE OF PROPOSED

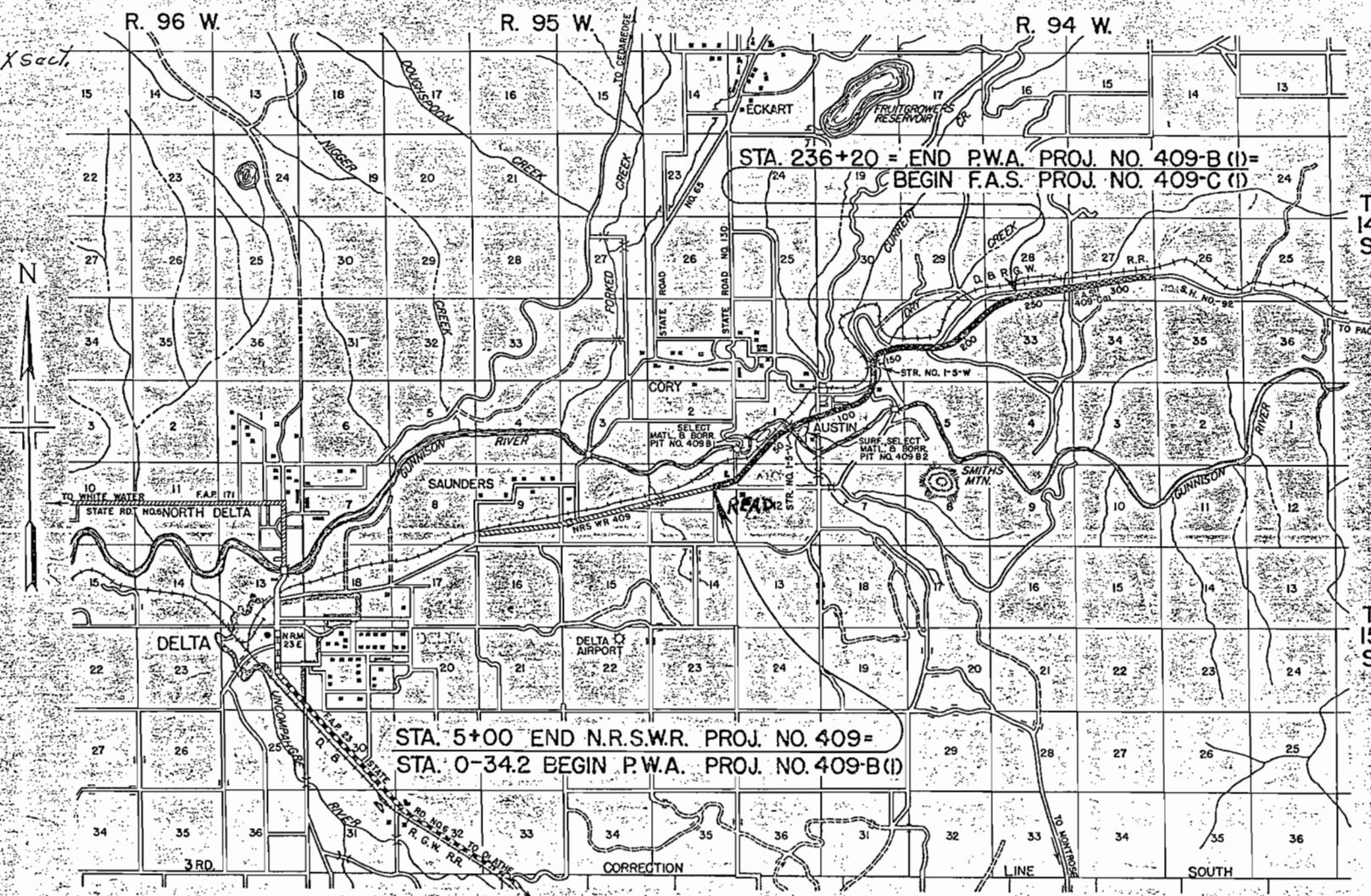
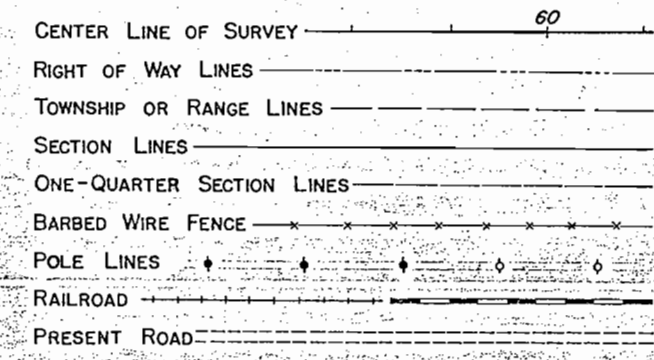
P.W.A. DOCKET COLO. 804-D  
PROJECT NO. 409-B (I)

## STATE HIGHWAY NO. 92

### DELTA COUNTY

SCALES OF ORIGINAL TRACINGS  
ON PLAN, 1 IN. = 100 FT.  
ON PROFILE } 1 IN. = 100 FT. HORIZONTAL  
                  } 1 IN. = 10 FT. VERTICAL  
GRADE LINE ON PROFILE IS SHOWN AS GRADE OF FINISHED ROAD  
GROSS LENGTH OF PROJECT 24,233.1 FT. = 4.589 MI.  
NET LENGTH OF PROJECT

CONVENTIONAL SIGNS



**NOTE**  
*It is recommended that bidders on this project go over the plan details with one of the following field representatives of this department.*  
MR. JOHN J. VANDEMOER, DIVISION ENGINEER, GRAND JUNCTION, COLO.  
MR. E.B. FABER, RESIDENT ENGINEER, HOTCHKISS, COLO.

RECOMMENDED FOR APPROVAL  
*James*  
ASSISTANT ENGINEER  
APPROVED  
*Chas. V. H.*  
STATE HIGHWAY ENGINEER  
RECOMMENDED FOR APPROVAL  
DIST. ENG. BUREAU PUBLIC ROADS  
RECOMMENDED FOR APPROVAL  
CHIEF ENG. BUREAU PUBLIC ROADS  
APPROVED  
DIRECTOR BUREAU PUBLIC ROADS



Sta. 4+~ Req'd. 10 cu. yds. Emb. to fill cellar.

N.E. 1/4 SEC. 11  
T. 15 S. R. 95 W.

S.W. 1/4 SEC. 1  
T. 15 S. R. 95 W.

FED. ROAD DIST. NO.	STATE	P.W.A. PROJ. NO.	SHEET NO.	TOTAL SHEETS
3	COLO.	409-B (I)	24	

Rev. 6-2-38 I.L.M. R.O.W. Dimensions  
Rev. as Const. March 1939

NOTE: All pole lines encroaching on construction are to be moved by owners. Right of way markers, fencing requirements, & gates are tabulated on Sheet No. 3.

Metal Plate Guard fence Requirements are tabulated on Sheet No. 4. E.M.S. WITHOUT FED. AID

Sta. 2+~ Req'd. Move & Restore Shed off R.O.W. (FORCE ACCOUNT)

Sta. 3+~ Req'd. Move & Restore Dance Hall off R.O.W. (FORCE ACCOUNT)

Sta. 6+~ Req'd. Move & Restore Toilet off R.O.W. (FORCE Acc't.)

STA. 5+00 END N.R.S.W.R. PROJ. NO. 409=  
STA. 0-34.2 BEGIN P.W.A. PROJ. NO. 409B(I)

Sta. 100+ , 175+ & 196+ ~ Move Power Poles off R.O.W. (FORCE Acc't.) (WORK BY POWER Co. FORCES)

Sta. 7+ ~ Move Independent Telephone Co. Poles off R.O.W. (FORCE Acc't.) (WORK BY INDEPENDENT TELEPHONE Co. FORCES)

Sta. 0-34.2 ~ Req'd. Rd. Appr. Rt.  
Sta. 0-10 ~ Req'd. Rd. Appr. Lt.  
Sta. 1+00-2+60 ~ Req'd. 11 cu. yds. uncl. excav. for ditch change Lt.

Sta. 6+50-12+50 ~ Req'd. 13 Guard Posts Rt.

Sta. 2+70 ~ Req'd. 18'x96' C.M.P. cross culvert, & remove 15'x64' C.M.P.

A 37°04' L  
D 2°  
T 960.5  
L 1853.3  
R 2865.0

Sta. 7+87 ~ Req'd. 23 cu. yds. emb. for road appr & remove timber bridge Rt.  
Sta. 9+00 ~ Req'd. 18'x60' C.M.P. cross culvert & 1 cu. yd. uncl. excav. for ditches.

Sta. 15+00 ~ Req'd. Remove old flume on Left.

Sta. 3+00 to 12+00 ~ Req'd. 3625 cu. yds. embank. & 356 cu. yds. uncl. excav. for channel change north of railroad. (Details SHEET No. 4)

Sta. 6+50 ~ Req'd. 18'x80' C.M.P. cross culvert & 1 cu. yd. uncl. excav. for ditches.

Sta. 13+95 ~ Req'd. 18'x76' C.M.P. cross culvert (Sk. 60°)  
Sta. 11+08 ~ Req'd. 129 cu. yds. Emb. for Rd. Apprs Rt. & Lt.

Sta. 14+67 ~ Req'd. 30'x86' C.M.P. cross culvert (Sk. 60°)

Sta. 9+00 ~ Req'd. 18'x60' C.M.P. cross culvert under channel change Lt. & 7 cu. yds. uncl. excav. for ditches. (Details SHEET No. 4)

Sta. 2+50 ~ Req'd. Rd. Appr. Rt.

Sta. 4+ ~ Req'd. Move & Restore shed off R.O.W. (FORCE ACCOUNT) (No FED. AID)

Sta. 1+20 ~ Req'd. Rd. Appr. Rt.

Sta. 2+ ~ Req'd. Move Billboard off R.O.W. (Work to be done by owners)

Sta. 4+50 ~ Req'd. 18'x70' C.M.P. cross culvert & remove structure. uncl. excav. for ditches

Sta. 8+30 ~ Req'd. 18'x58' C.M.P. cross culvert.

Sta. 3+05 ~ Req'd. 2'x60' standard galv. pipe Rt.

Sta. 14+00 ~ Req'd. 55 cu. yds. Emb. for Rd. Appr. Rt.

Sta. 14+10 ~ Req'd. Remove 1'x1' wood flume and 1'x1'x20' W.B.G.

Sta. 14+38 ~ Req'd. 24'x82' C.M.P. cross culvert (Sk. 60°)

Sta. 14+20 ~ Req'd. 76 cu. yds. Emb. for Rd. Appr. Lt.

Sta. 19+15 ~ Req'd. 18'x56' C.M.P. cross culvert.

Sta. 19+05 ~ Req'd. 21 cu. yds. Emb. for Rd. Appr. Rt.

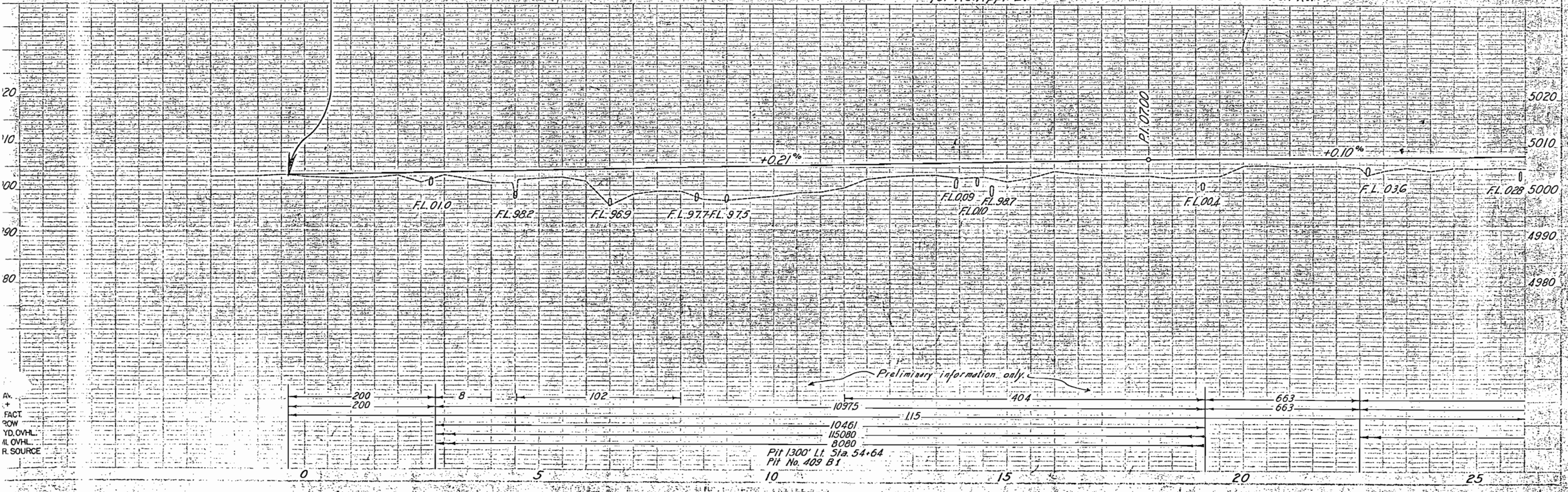
Sta. 22+65 ~ Req'd. 18'x74' C.M.P. cross culvert & 4 cu. yds. uncl. excavation for ditches.

Sta. 22+60-25+90 ~ Req'd. 8 cu. yds. uncl. excav. for ditch Rt.

Sta. 25+90 ~ Req'd. 24'x56' C.M.P. cross culvert & cu. yds. uncl. excav. for ditches.

CLEARING & GRUBBING  
Sta. 15+ to 54+ ~ heavy Greasewood Rt. & Lt.

N.W. 1/4 SEC. 12  
T. 15 S. R. 95 W.



Sta. 27+50 ~ Req'd. 24' x 58' C.M.P. cross culvert & 9 cu. yds. uncl. excav. for ditches.

Sta. 33+87 ~ Req'd. 168 cu. yds. emb. for road appr. Rt. & Lt. & 24' x 62' C.M.P. side drain Rt. & 18' x 24' C.M.P. side drain Lt.

S.W. 1/4 SEC. 1  
T. 15 S. R. 95 W.

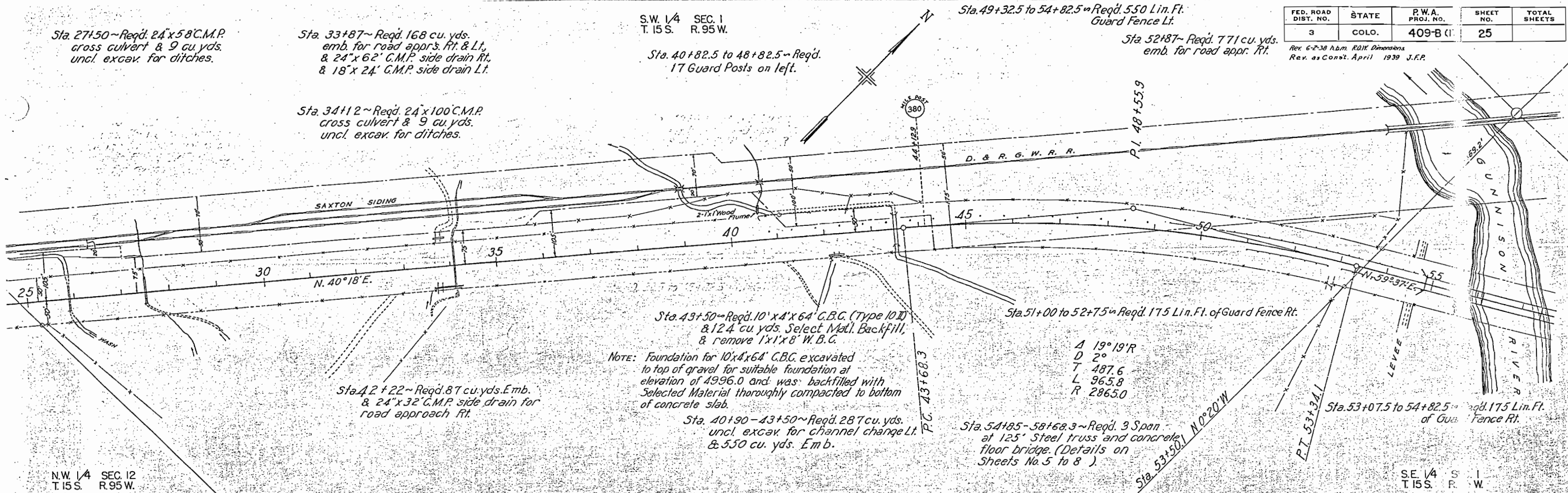
Sta. 40+82.5 to 48+82.5 ~ Req'd. 17 Guard Posts on left.

Sta. 49+32.5 to 54+82.5 ~ Req'd. 550 Lin. Ft. Guard Fence Lt.

Sta. 52+87 ~ Req'd. 771 cu. yds. emb. for road appr. Rt.

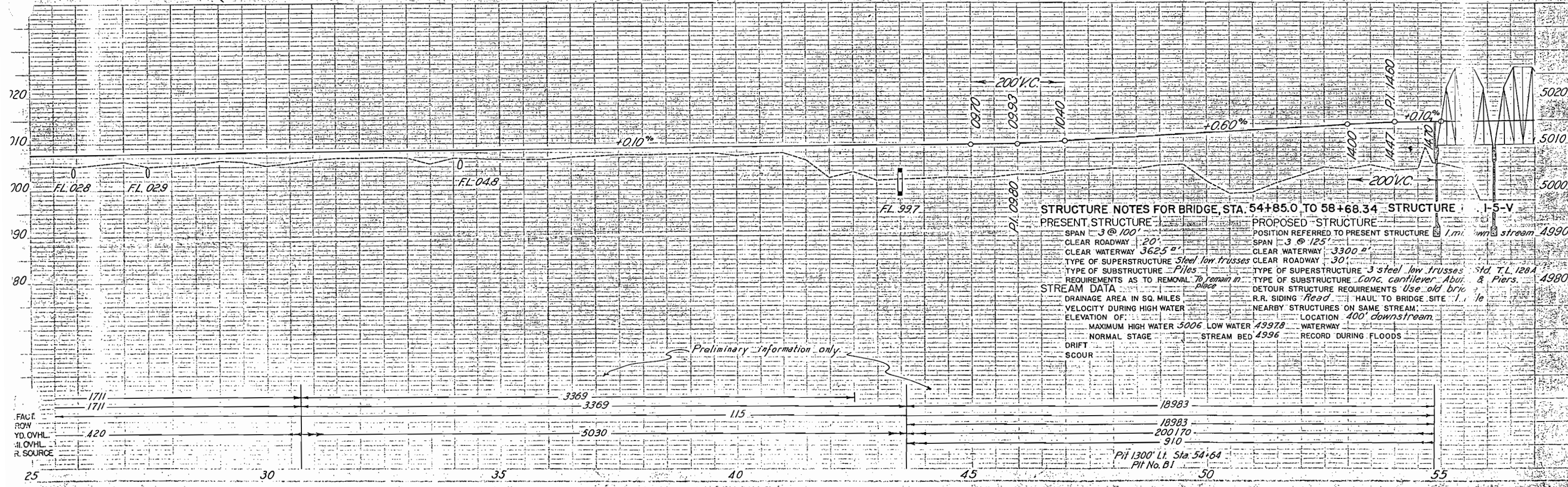
FED. ROAD DIST. NO.	STATE	P.W.A. PROJ. NO.	SHEET NO.	TOTAL SHEETS
3	COLO.	409-B (I)	25	

Rev. 6-2-38 h.b.m. R.O.M. Dimensions  
Rev. as Const. April 1939 J.F.P.



N.W. 1/4 SEC. 12  
T. 15 S. R. 95 W.

S.E. 1/4 SEC. 1  
T. 15 S. R. 95 W.

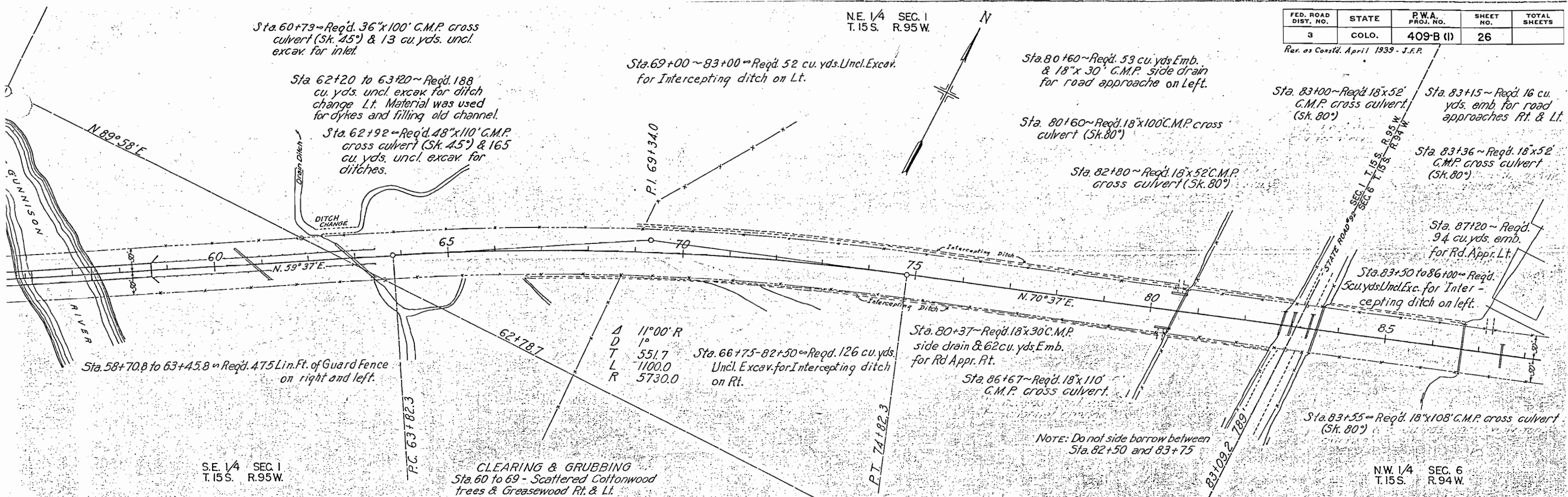


FED. ROAD DIST. NO.	STATE	P.W.A. PROJ. NO.	SHEET NO.	TOTAL SHEETS
3	COLO.	409-B (I)	26	

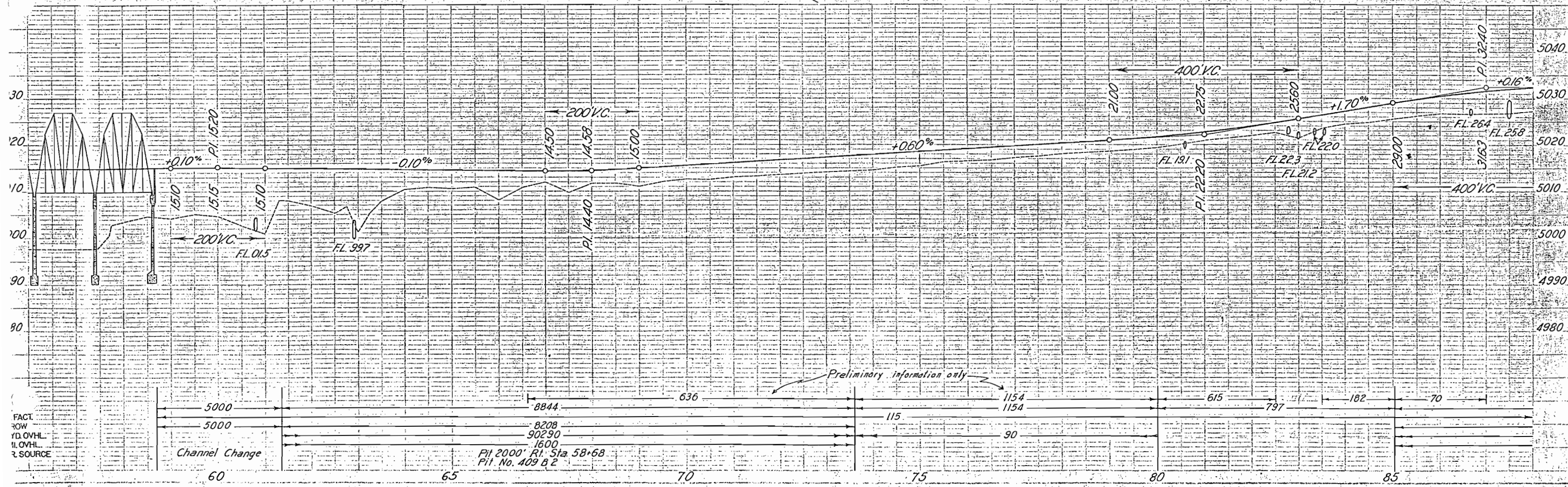
Rev. as Const'd. April 1939 - J.F.P.

NE 1/4 SEC. 1  
T. 15S. R. 95W.

NW 1/4 SEC. 6  
T. 15S. R. 94W.

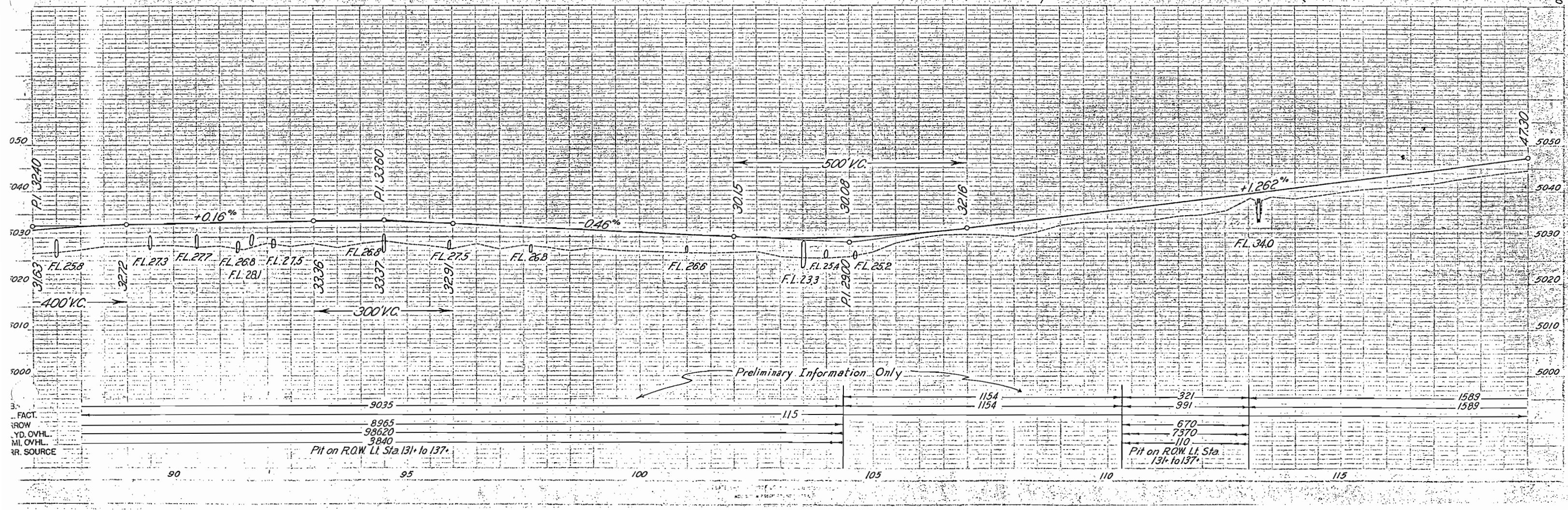
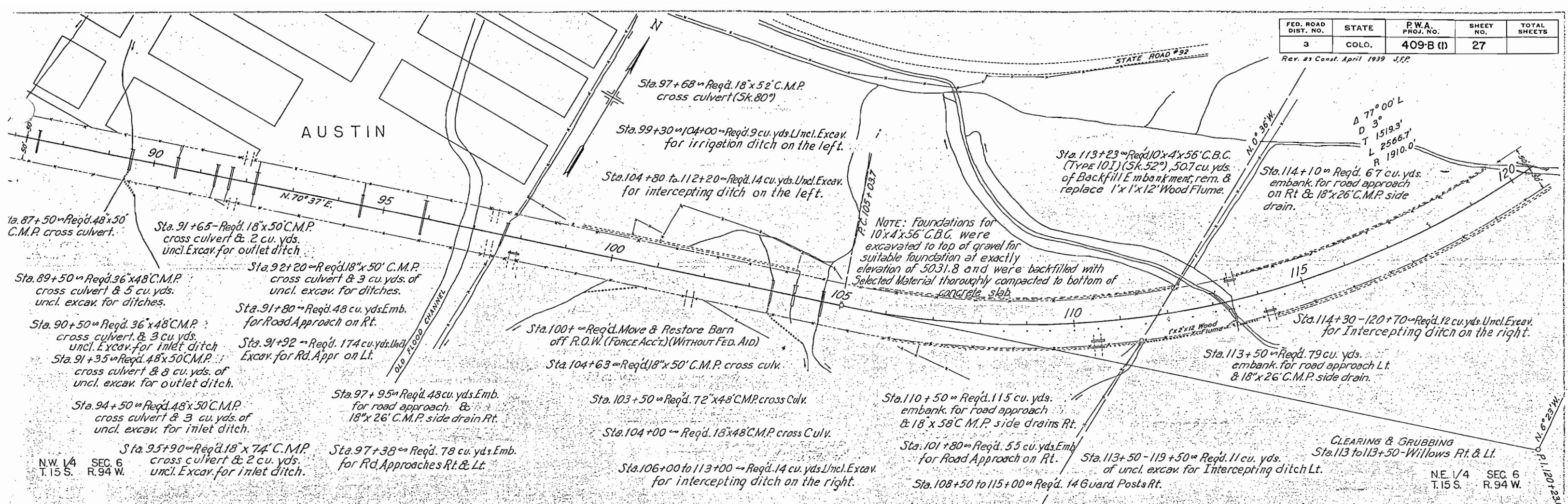


SE 1/4 SEC. 1  
T. 15S. R. 95W.



FED. ROAD DIST. NO.	STATE	P.W.A. PROJ. NO.	SHEET NO.	TOTAL SHEETS
3	COLO.	409-B (I)	27	

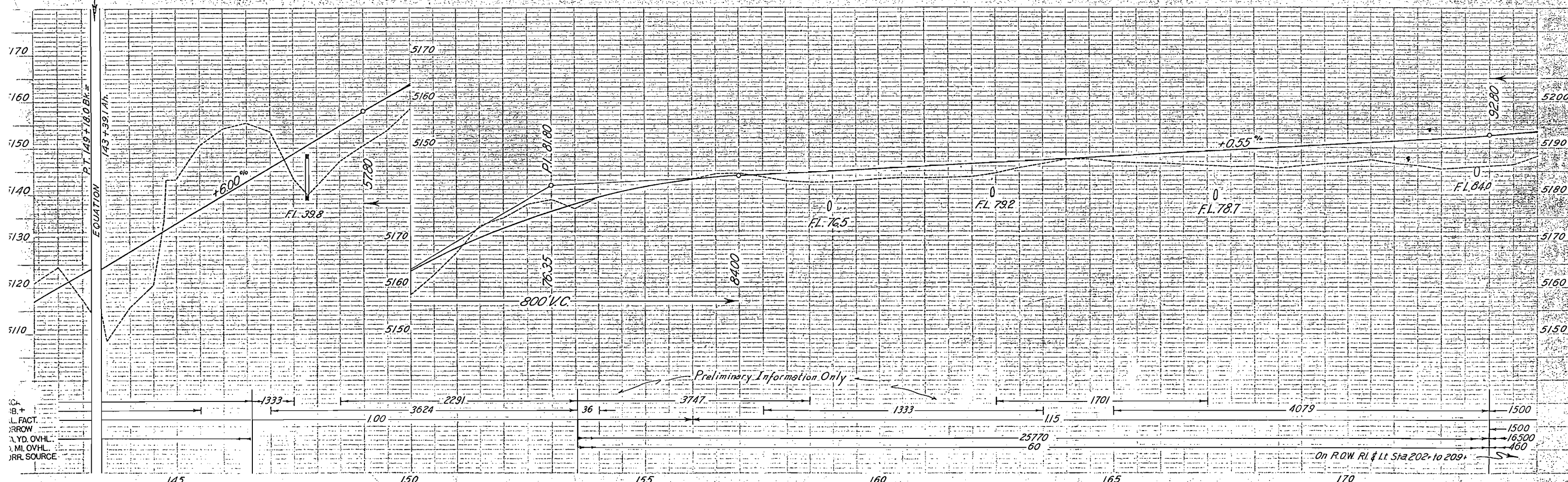
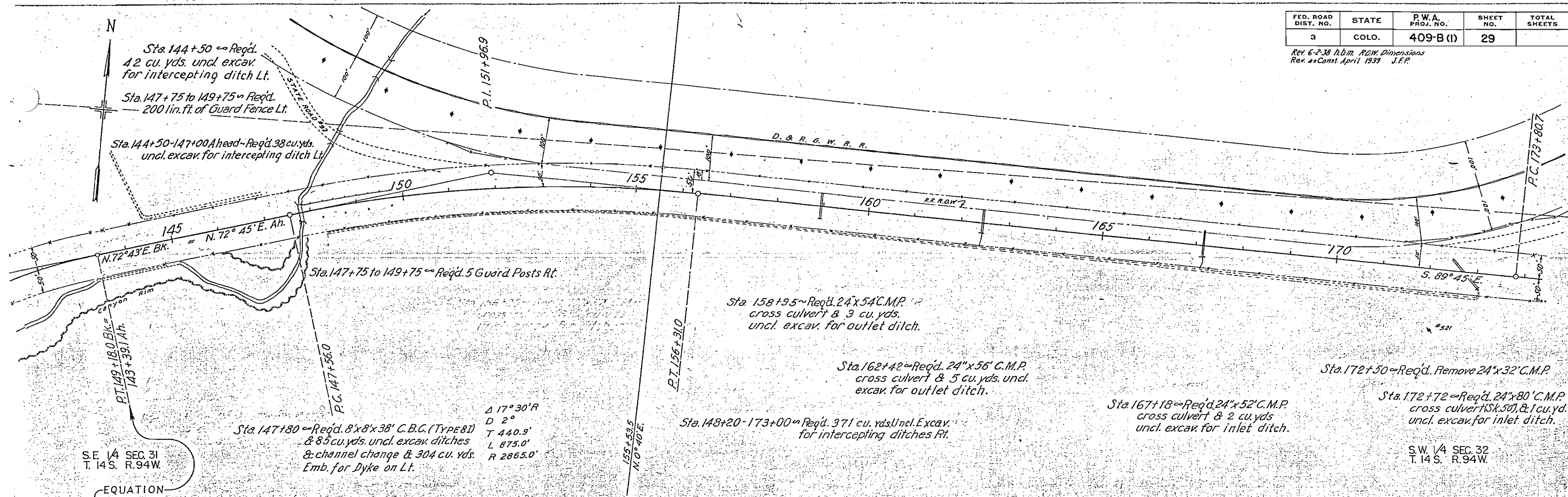
Rev. as Const. April 1939 J.F.P.





FED. ROAD DIST. NO.	STATE	P.W.A. PROJ. NO.	SHEET NO.	TOTAL SHEETS
3	COLO.	409-B (I)	29	

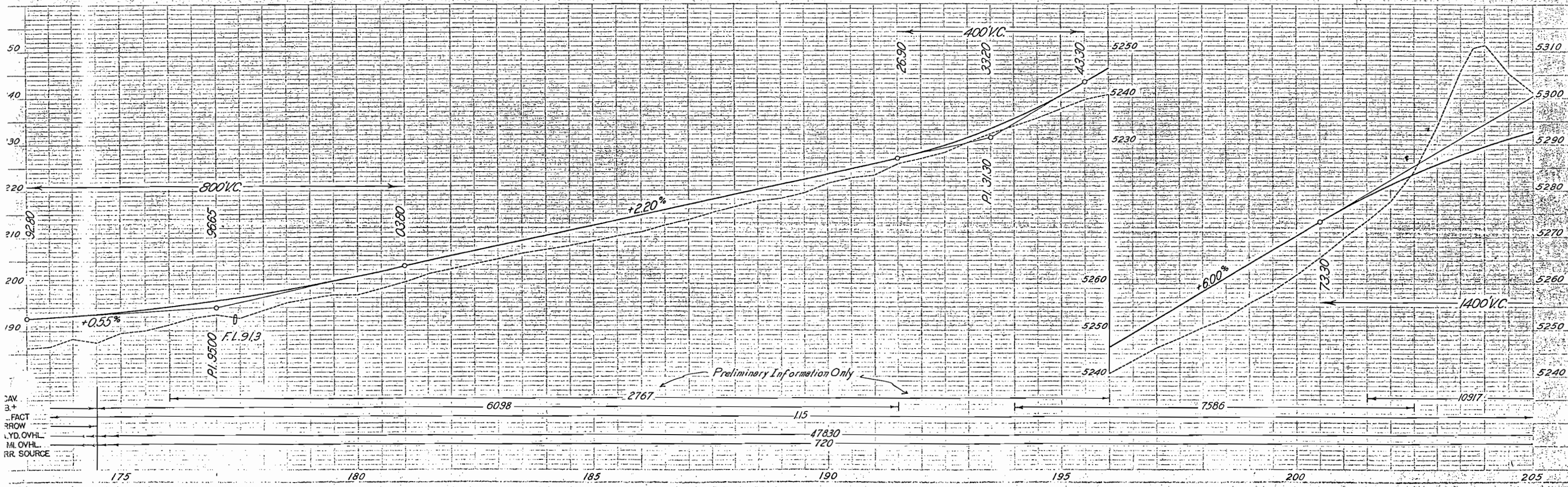
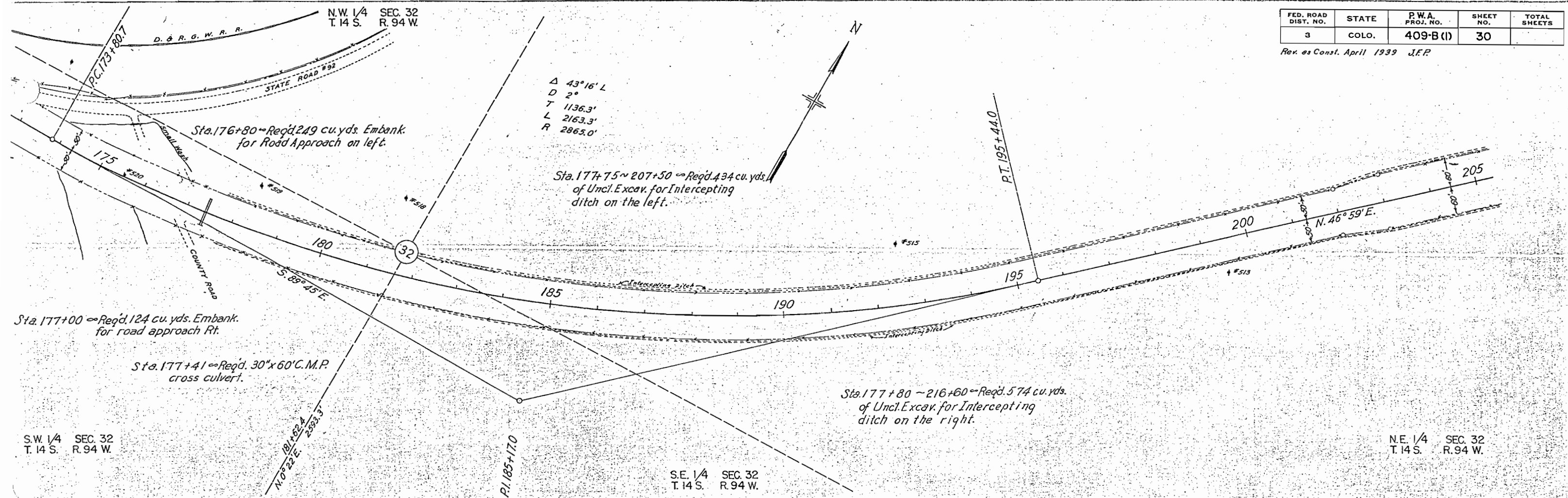
REV. 6-2-38 H.B.M. P.W.M. DIMENSIONS  
REV. AS CONST. APRIL 1939 J.F.P.



1. CL.  
 2. B. +  
 3. L. FACT.  
 4. RROW  
 5. 1 YD. OVHL.  
 6. 1 MI. OVHL.  
 7. R.R. SOURCE

FED. ROAD DIST. NO.	STATE	P.W.A. PROJ. NO.	SHEET NO.	TOTAL SHEETS
3	COLO.	409-B (I)	30	

Rev. as Const. April 1939 J.F.P.



FED. ROAD DIST. NO.	STATE	P.W.A. PROJ. NO.	SHEET NO.	TOTAL SHEETS
3	COLO.	409-B (I)	31	

Rev. as Const. April 1939 J.F.P.

Sta. 208 + 30 ~ Req'd. 24 x 54' C.M.P. cross culvert and 2 cu. yds. uncl. excav. for ditches.

Sta. 227 + 70 ~ Req'd. 97 cu. yds. Embank. for road approach Lt.

Sta. 217 + 35 ~ Req'd. 18 x 100' C.M.P. cross culvert.

Sta. 223 + 75 ~ Req'd. 24 x 62' C.M.P. cross culvert and 21 cu. yds. uncl. excav. for inlet and Intercepting ditches on Rt.

Sta. 216 + 50 to 219 + 50 ~ Req'd. 7 Guard Posts Rt. & Lt.

Sta. 221 + 50 ~ Req'd. 24 x 64' C.M.P. cross culvert and 2 cu. yds. uncl. excav. ditches.

Sta. 226 + 50 ~ Req'd. 30 x 60' C.M.P. cross culvert and 43 cu. yds. uncl. excav. for ditches.

Sta. 233 + 50 ~ Req'd. 18 x 50' C.M.P. cross culvert & 7.5 cu. yds. uncl. excav. for outlet ditch.

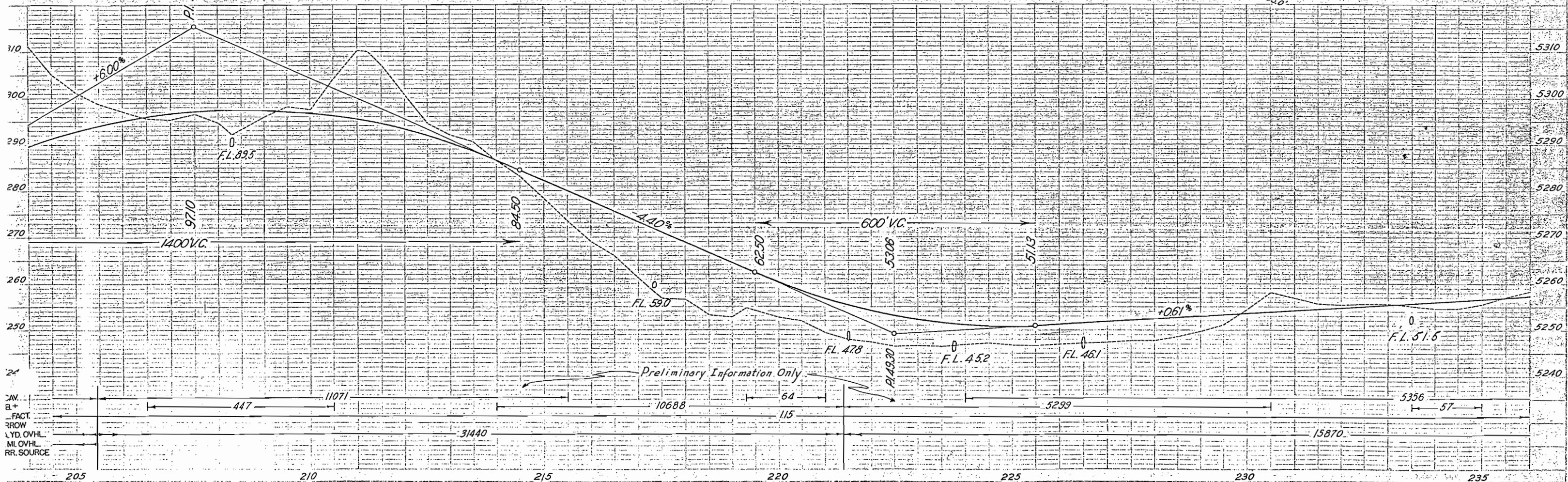
Sta. 222 + 00 - 236 + 20 ~ Req'd. 161 cu. yds. of Uncl. Excav. for Intercepting ditch on the right.

Sta. 226 + 50 ~ Req'd. 77 cu. yds. Uncl. Excav. for Intercepting ditches on the right.

N.E. 1/4 SEC. 32  
T. 14 S. R. 94 W.

N.W. 1/4 SEC. 33  
T. 14 S. R. 94 W.

S.W. 1/4 SEC. 28  
T. 14 S. R. 94 W.

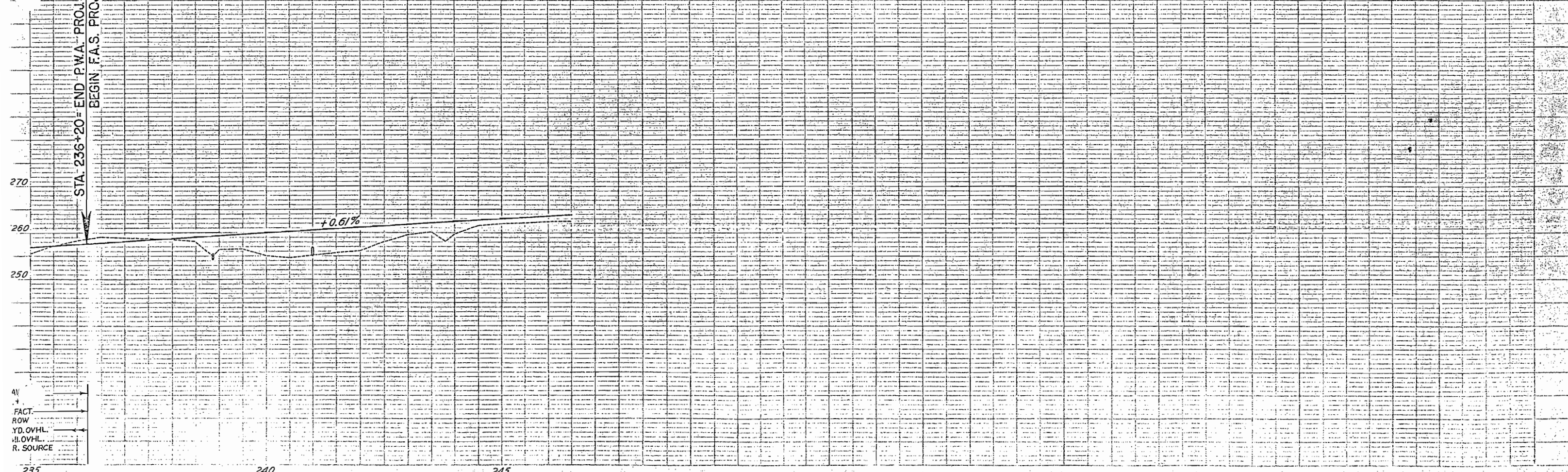
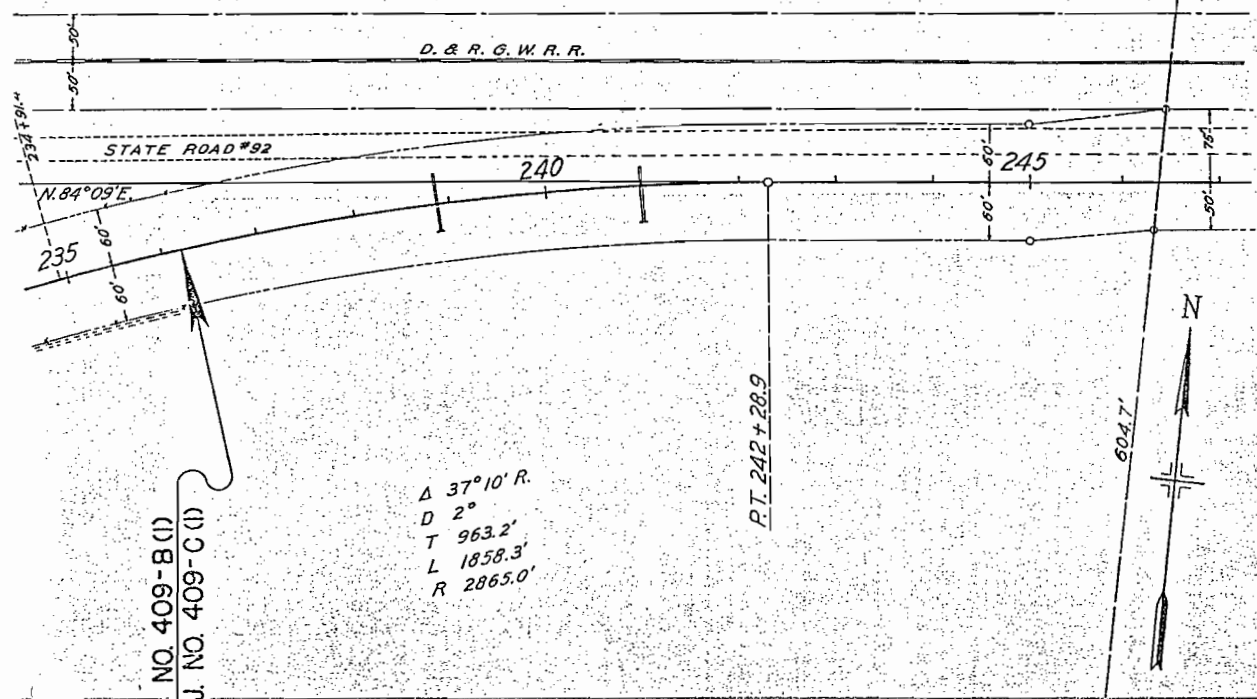


S.W. 1/4 SEC. 28  
T. 14 S. R. 94 W.

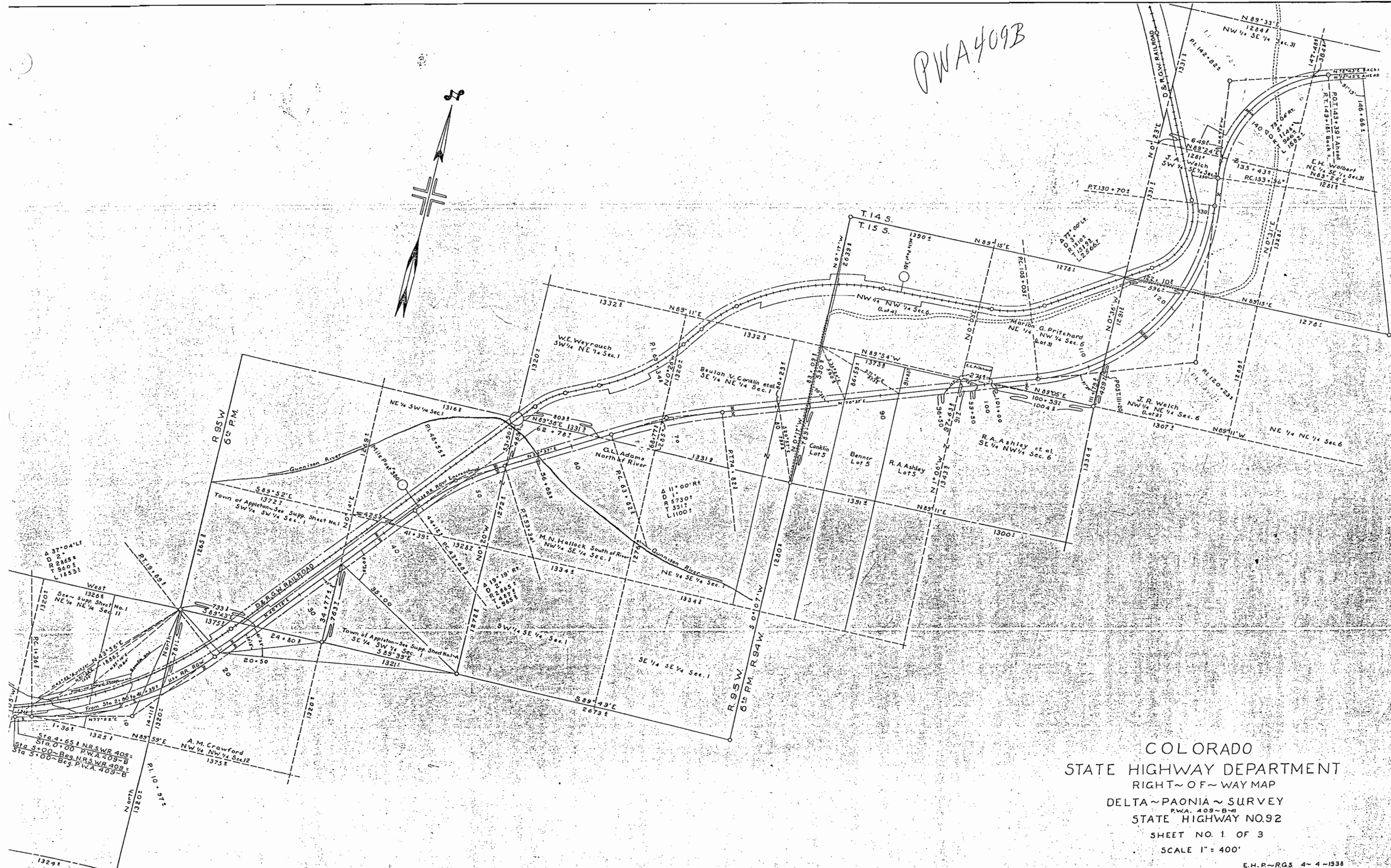
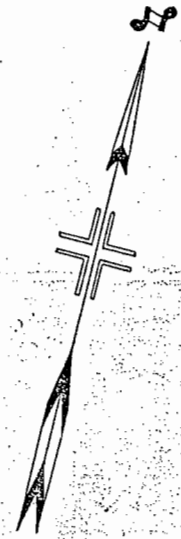
FED. ROAD DIST. NO.	STATE	P.W.A. PROJ. NO.	SHEET NO.	TOTAL SHEETS
3	COLO.	409-B(I)	32	

Rev. as Const. April 1939 J.F.P.

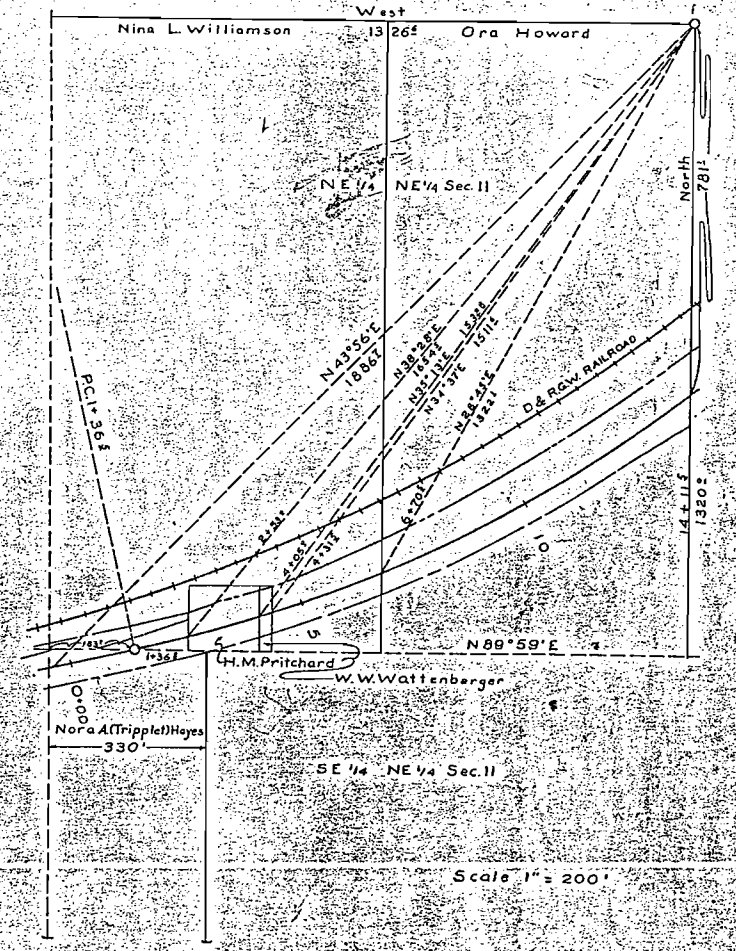
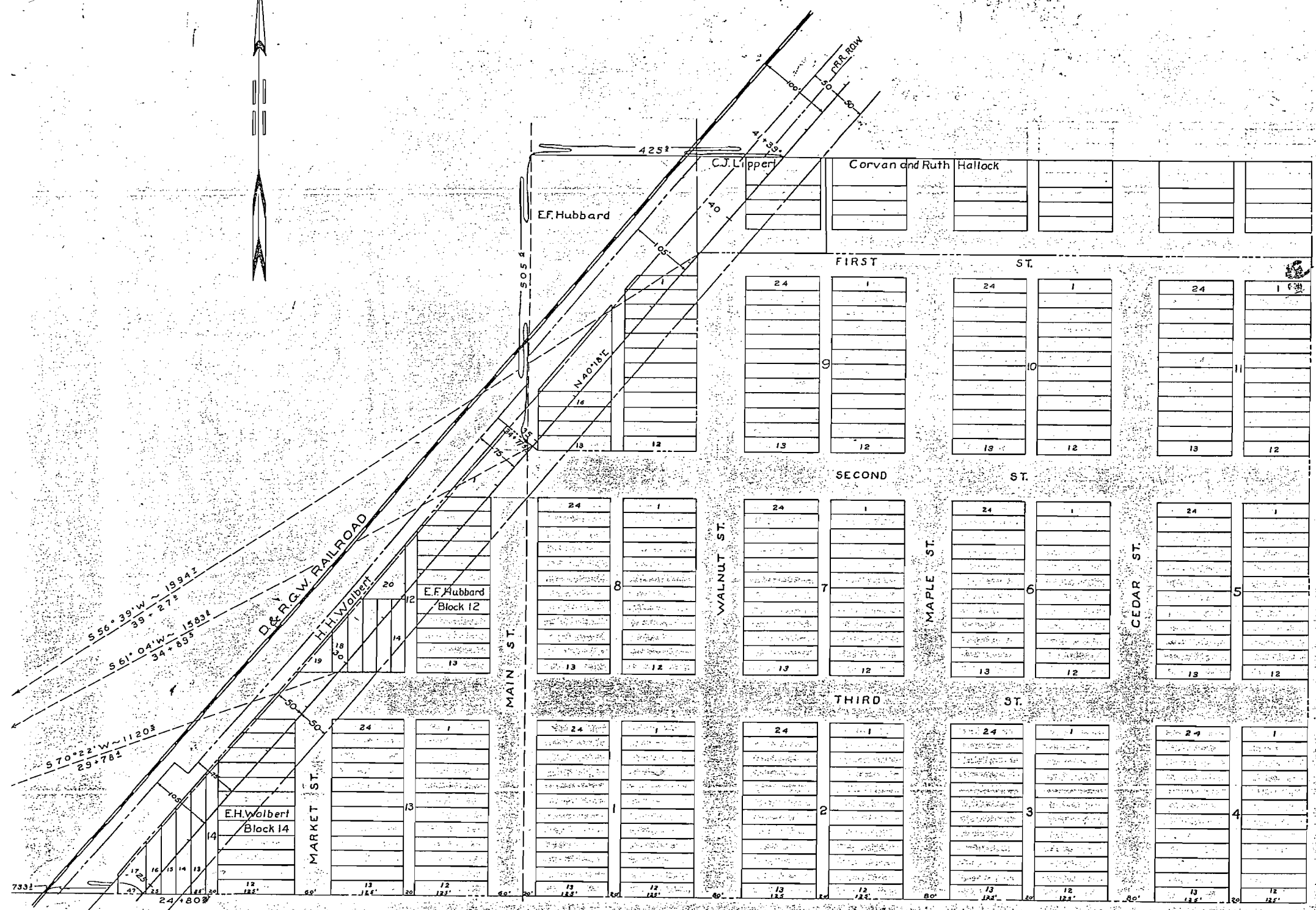
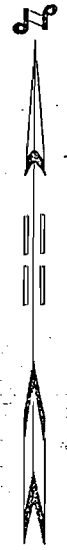
Sta. 236+20 = Reqd. 1 Project Marker.



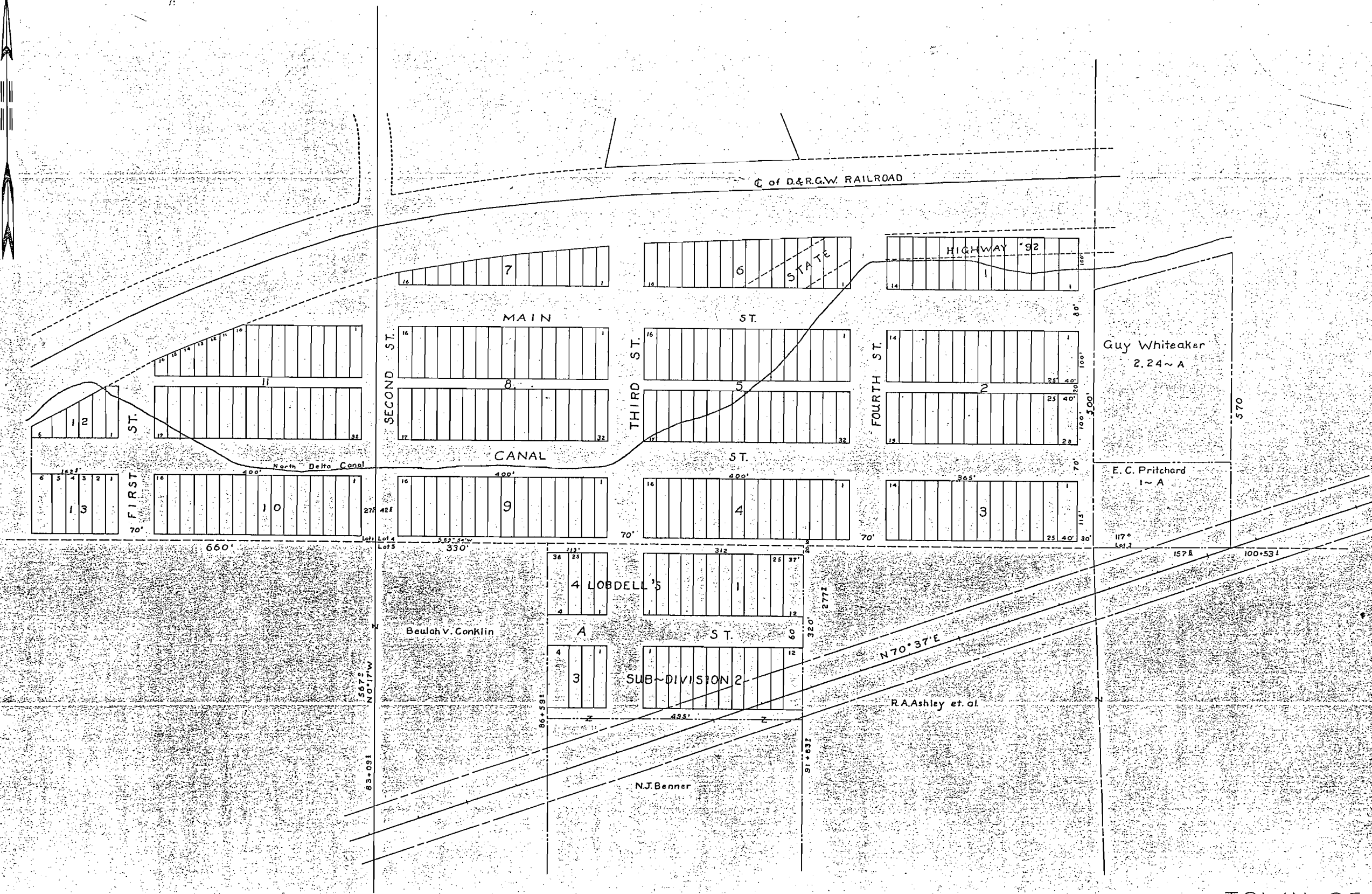
PWA 409B



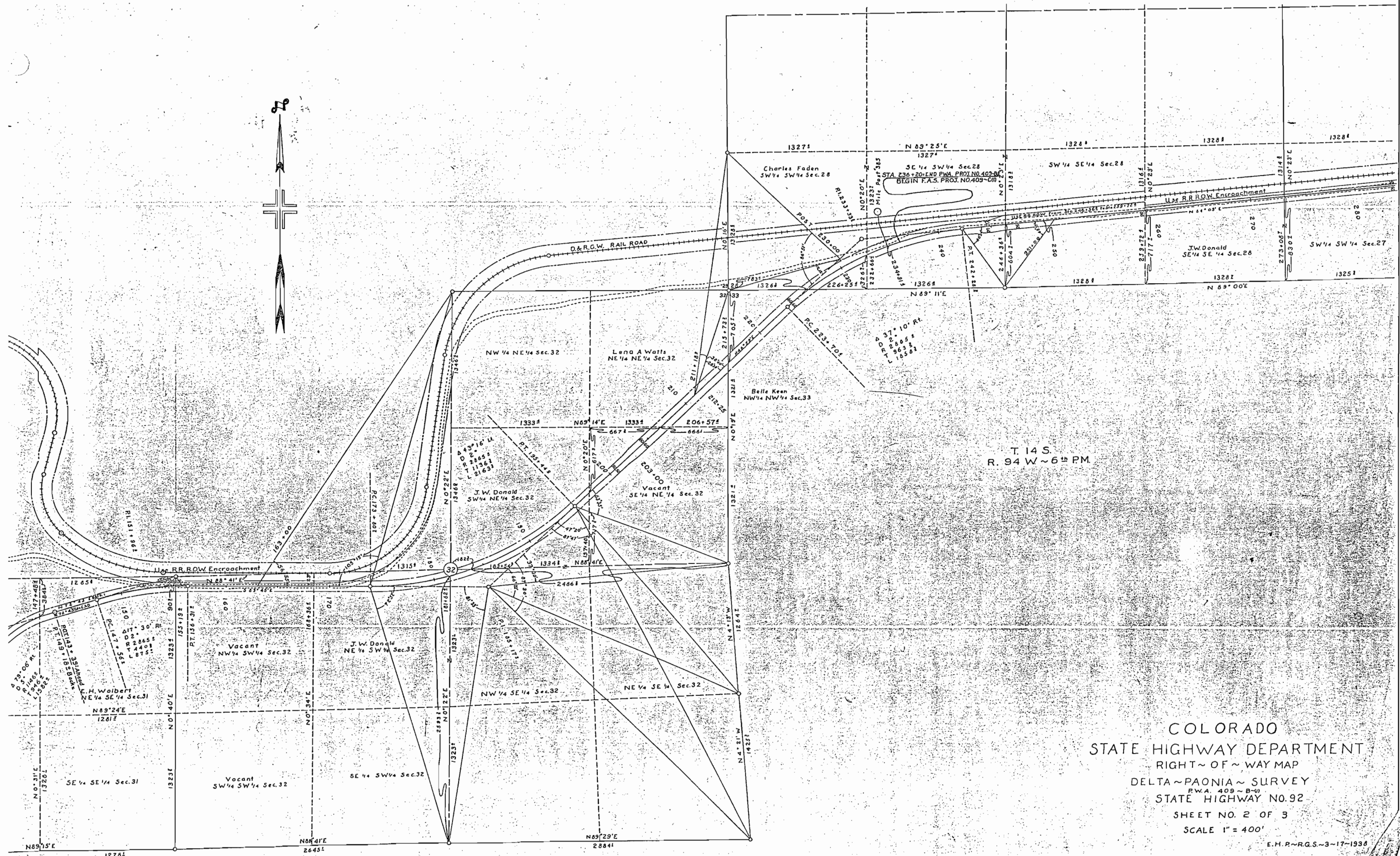
COLORADO  
 STATE HIGHWAY DEPARTMENT  
 RIGHT-OF-WAY MAP  
 DELTA~PAONIA~SURVEY  
PWA. 409-B-1  
 STATE HIGHWAY NO.92  
 SHEET NO. 1 OF 3  
 SCALE 1" = 400'



APPLETON TOWN SITE  
SUPPLEMENTARY SHEET NO. 1-A  
RIGHT-OF-WAY MAP  
PROJECT NO. 409-B  
STATE HIGHWAY NO. 92  
SHEET NOS. OF 3  
SCALE 1" = 100'  
E.H.P. ~ R.G.S. 4-13-1938



TOWN OF AUSTIN  
 SUPPLEMENTARY SHEET NO 1-B  
 RIGHT-OF-WAY MAP  
 PROJECT NO. 409-B  
 STATE HIGHWAY NO. 92  
 SHEET NO. 3 OF 3  
 SCALE 1" = 100'  
 E.H.P. ~ R.G.S. 4-8-1938



COLORADO  
STATE HIGHWAY DEPARTMENT  
RIGHT-OF-WAY MAP  
DELTA-PAONIA SURVEY  
P.W.A. 409-B-U  
STATE HIGHWAY NO. 92  
SHEET NO. 2 OF 3  
SCALE 1" = 400'