

INDEX OF SHEETS

P.W.A. PROJECT NO. 5002

- SKETCH MAP AND TITLE
- TYPICAL SECTION AND SUMMARY OF QUANTITIES
- LIST OF STRUCTURES
- DETAILS OF BRIDGE STA. 1835+
- DETAILS OF BRIDGE STA. 1877+
- STANDARD NAME PLATE
- STANDARD HEADWALLS FOR C.M.P. CULVERTS
- STANDARD WIRE CABLE GUARD POSTS
- STANDARD WIRE CABLE GUARD FENCE
- STANDARD WIRE FENCES (TREATED WOODEN POSTS) & MARKER POSTS
- STANDARD PICKET SNOW FENCE
- STANDARD STRUCTURE NUMBER LETTERING
- STANDARD METHODS FOR SUPERELEVATION AND WIDENING OF CURVES
- STANDARD SIDE APPROACH ROADS/ROADWAY CONSTRUCTION TRAFFIC SIGNS P.W.A.
- PLAN AND PROFILE
- CROSS SECTIONS

- M 6 D
- M 102 E
- M 19 A
- M 20 B
- M 24 F
- M 25 B
- M 10 A
- M 1 B
- M 2 BX

P.W.A. PROJECT NO. 5002 B

- SKETCH MAP AND TITLE
- TYPICAL SECTION AND SUMMARY OF QUANTITIES
- LIST OF STRUCTURES
- STANDARD HEADWALLS FOR C.M.P. CULVERTS
- STANDARD WIRE CABLE GUARD FENCE
- STANDARD WIRE FENCES (TREATED WOODEN POSTS) & MARKER POSTS
- STANDARD PICKET SNOW FENCE
- STANDARD METHODS FOR SUPERELEVATION AND WIDENING OF CURVES
- STANDARD SIDE APPROACH ROADS/ROADWAY CONSTRUCTION TRAFFIC SIGNS P.W.A.
- PLAN AND PROFILE
- CROSS SECTIONS

- M 102 E
- M 20 B
- M 24 F
- M 25 B
- M 1 B
- M 2 BX

# COLORADO

## STATE HIGHWAY DEPARTMENT

### PLAN AND PROFILE OF PROPOSED

# COMBINED PROJECT NO. 5002 & 5002 B

## STATE HIGHWAY NO. 8 & 9

## PARK COUNTY

P.W.A. DOCKET COLO. 804-D

SCALES ON ORIGINAL TRACINGS  
 ON PLAN, 1 IN. = 100 FT.  
 ON PROFILE, 1 IN. = 100 FT. HORIZONTAL  
 1 IN. = 10 FT. VERTICAL

GRADE LINE ON PROFILE IS SHOWN AS GRADE OF FINISHED ROAD

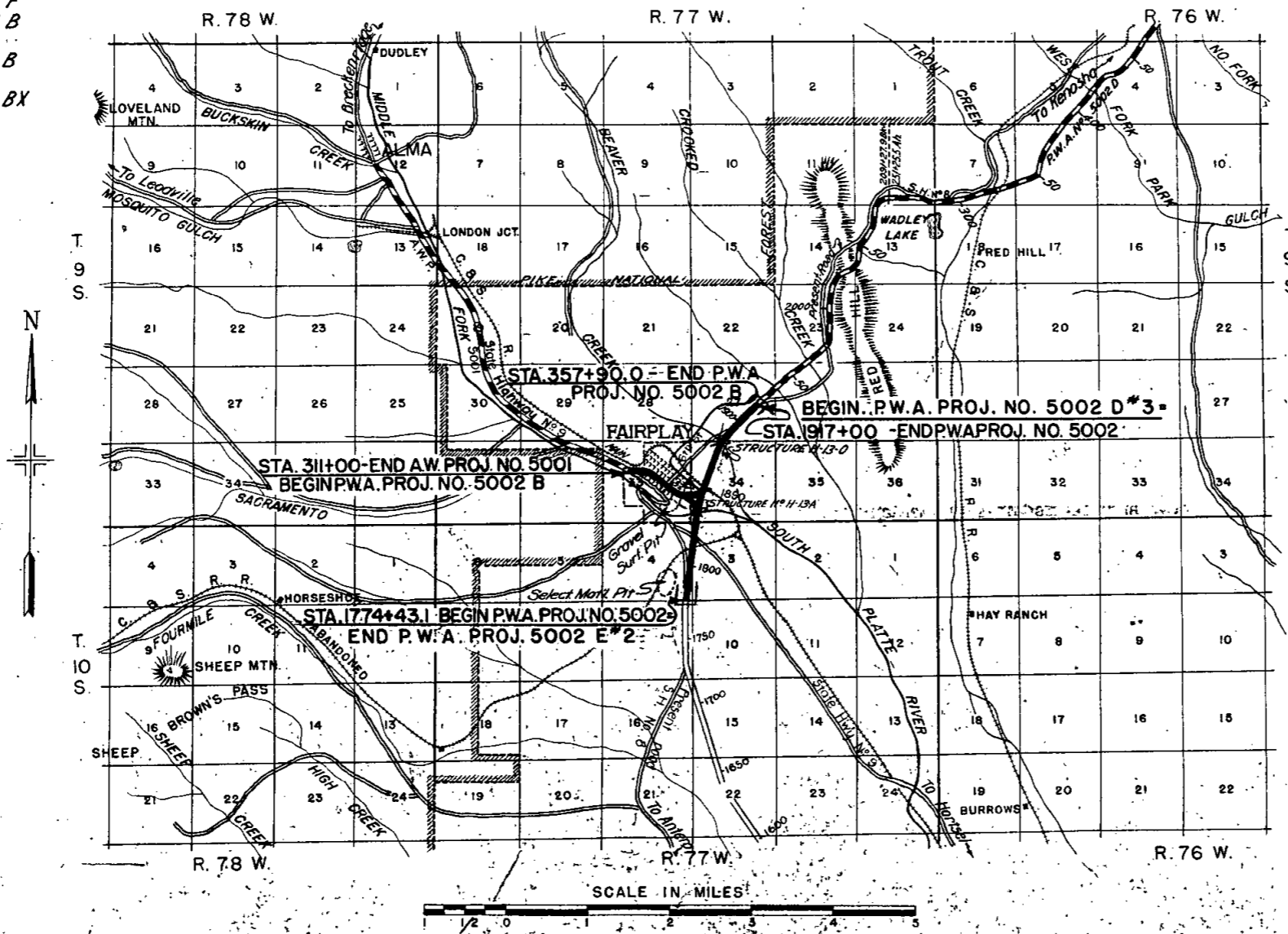
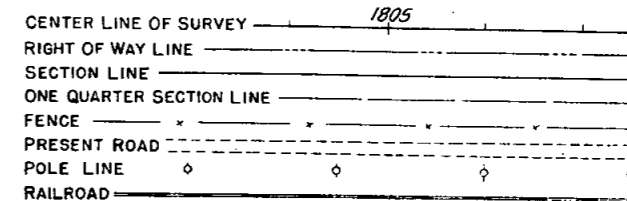
GROSS LENGTH OF PROJECT } 14,475.6 FT. = 2.741 MI.  
 NET LENGTH OF PROJECT } 4,677.1 FT. = 0.885 MI.

1-9-59

FED. ROAD DIST. NO.	STATE	COMB. P.W.A. PROJ. NO.	SHEET NO.	TOTAL SHEETS
3	COLO.	5002 B 5002 B	1	

Rev. 4-23-37 h.b.m. Sketch map Length  
 Rev. 8-9-37, Alignment & Length-J.P.K.

CONVENTIONAL SIGNS



FWP 29E(1) 1938  
 PWA 5002 B *Good* #1  
 FWP 279 H - MCE  
 Large Plus  
 29 F(1) - 29 E(1) - MCE  
 Bailey Fairplay  
 MP 181.8 to 184.5

NOTE  
 It is recommended that bidders on this project go over the Plan Details with one of the following field representatives of this department.  
 Ernest Montgomery Division Engineer Colorado Springs, Colorado.  
 H. R. Evans Resident Engineer Fairplay, Colorado.

RECOMMENDED FOR APPROVAL 1/20/59  
*J. G. Williams*  
 ASSISTANT ENGINEER

APPROVED  
*Chas. Hill*  
 STATE HIGHWAY ENGINEER

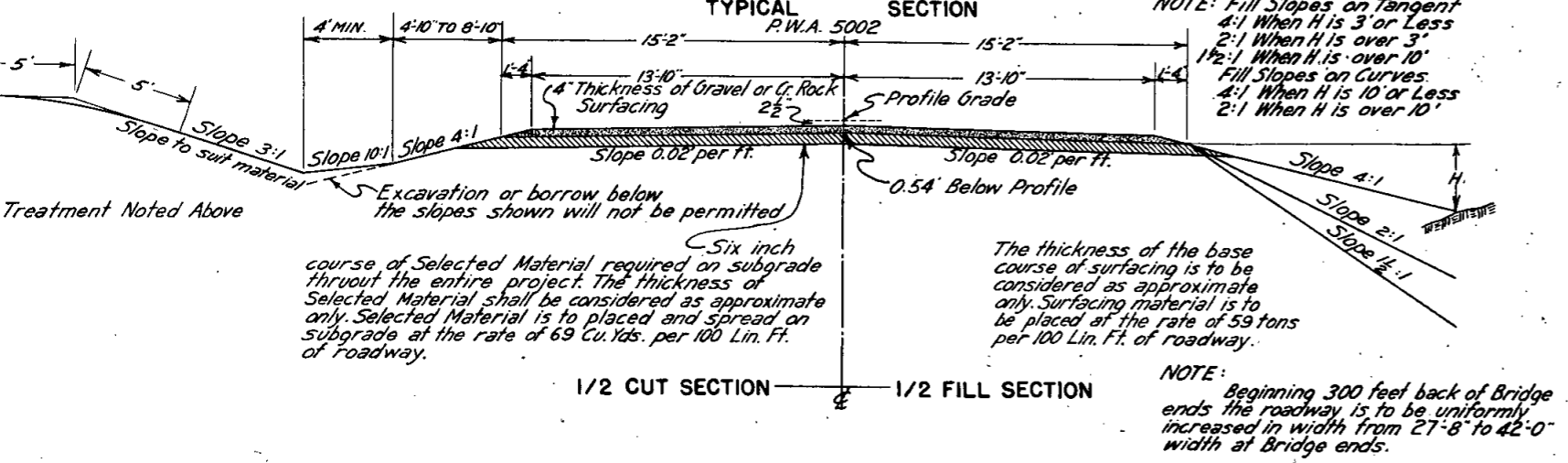
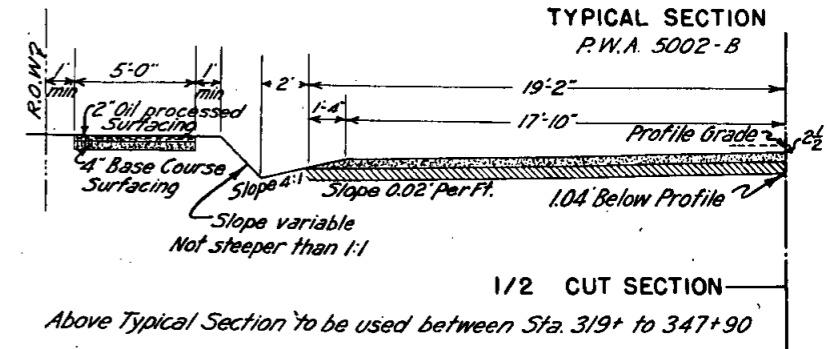
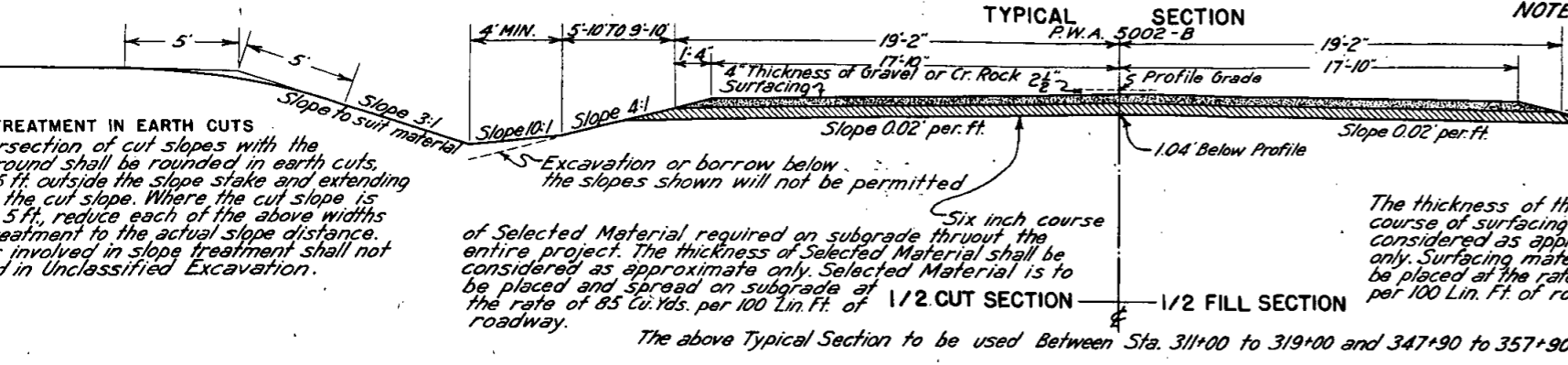
RECOMMENDED FOR APPROVAL  
 DIST. ENG. BUREAU PUBLIC ROADS

RECOMMENDED FOR APPROVAL  
 CHIEF ENG. BUREAU PUBLIC ROADS

APPROVED  
 DIRECTOR BUREAU PUBLIC ROADS

Rev. New Sheet 8-9-37 J.P.K.  
Rev. 9-14-37 F.F.S.

# TYPICAL CROSS SECTION OF IMPROVEMENT AND SUMMARY OF QUANTITIES



## SUMMARY OF APPROXIMATE QUANTITIES

ITEM	DESCRIPTION	UNIT	P.W.A. PROJ. NO. 5002				P.W.A. PROJ. NO. 5002 B				
			ROADWAY	BRIDGE STA. 1853+	BRIDGE STA. 1877+	TOTAL	ROADWAY IN FAIRPLAY	ROADWAY OUTSIDE FAIRPLAY	TOTAL	COMBINED TOTAL	
10 a	Clearing & Grubbing The Entire Project	Lump Sum									
10 b	Clearing & Grubbing The Entire Project	Lump Sum									
10 c	Clearing & Grubbing The Entire Project	Lump Sum									
11 a	Removal of 4 Structures	Lump Sum									
11 b	Removal of Abandoned R.R. Track Sta. 1807+	Lump Sum									
11 c	Removal of 12 Structures	Lump Sum									
11 d	Removing Concrete Sidewalk	Sq. Ft.					310		310		310
12 a	Removing Fence	Lin. Ft.	1600			1600	150		150		1750
12 b	Removing & Rebuilding Fence	Lin. Ft.					250		250		250
13 c	Unclassified Excavation	Cu. Yd.	49,500			49,500	19,000	20,500	39,500		79,000
13 cx	Uncl. Excav. (Selected Material)	Cu. Yd.	10,100			10,100	3,600	600	4,200		14,300
13 d	Cut Slope Treatment	Mile	3.1			3.1	0.5	0.2	0.7		3.8
14 a	Dry Rock Excavation (Structural)	Cu. Yd.	40			40	20		20		70
14 b	Dry Common Excavation (Structural)	Cu. Yd.	290	165	40	495	100		100		595
14 c	Wet Rock Excavation (Structural)	Cu. Yd.	10			10	10		10		30
14 d	Wet Common Excavation (Structural)	Cu. Yd.	80			80	30		30		132.5
18 a	Station Yard Overhaul	Sta. Yd.	317,700			317,700	32,700		32,700		350,400
18 b	Yard Mile Overhaul	Yd. Mi.	9700			9700	100		100		9800
26 a	Gravel or Crushed Rock Surfacing	Ton	9300			9300	3900	500	4400		13,700
26 c	Overhaul of Surfacing	Ton Mile	3700			3700					3700
42 a	Untreated Bridge Timber	Mft. bm		0.4	0.8	1.2					1.2
42 b	Treated Bridge Timber	Mft. bm			15.3	15.3					15.3
43	Asphalt Plank Wearing Surface	Sq. Ft.			667	667					667
46 a	Class "A" Concrete	Cu. Yd.		651		651					651
46 b	Class "B" Concrete	Cu. Yd.	41			41	8		8		49
46 c	Class "A" Concrete (Handrails)	Cu. Yd.		7		7					7
47	Reinforcing Steel	Lb.		62,500		62,500					62,500
48	Structural Steel	Lb.		62,200		62,200					62,200
53 a	15" Corrugated Metal Culvert Pipe	Lin. Ft.					128		128		128
53 b	18" Corrugated Metal Culvert Pipe	Lin. Ft.	22			22	492		492		514
53 c	24" Corrugated Metal Culvert Pipe	Lin. Ft.	672			672	114		114		786
53 d	30" Corrugated Metal Culvert Pipe	Lin. Ft.	272			272					272
53 e	36" Corrugated Metal Culvert Pipe	Lin. Ft.	54			54					54
53 g	48" Corrugated Metal Culvert Pipe	Lin. Ft.	142			142					142
60 a	Treated Timber Piling	Lin. Ft.			632	632					632
60 e	Metal Pipe Shoes	Each			30	30					30
74	Wire Cable Guard Fence	Lin. Ft.	1364			1364	288		288		1652
74 x	Timber Guard Posts	Each	50			50					50
76 a	Barbed Wire Fence with Treated Wooden Posts	Lin. Ft.	28,700			28,700	1300	800	2100		30,800
76 g	Barbed Wire Gates	Each	2			2					2
77	Picket Snow Fence	Lin. Ft.	1406			1406	564		564		1970
81 a	Project Marker	Each	1			1					1
81 b	Right of Way Markers	Each	25			25	18		18		43
87	Oil Processed Sidewalk	Sq. Yd.					2,400		2,400		2,400
89 a	Drain Pipe (Conc. - Floor) (3" x 5'-0" Long)	Each		4		4					4
89 b	Drain Pipe (Timber Floor) (3" x 2'-4" Long)	Each			2	2					2
	Obliterating Old Road Force Account	Lump Sum									
	Raise Track & Construct Grade Crossing Sta. 1849+ (Work by R.R. Co. Forces) Force Account	Lump Sum									
	Move Telephone Poles Off R.O.W. Stas. 1777+ to 1704, 1823, 1826, 1840, 1848 (Work by Telephone Co. Forces) Force Account	Lump Sum									
	Irrigation & Drainage Work Sta. 322+ Force Account	Lump Sum									
	ITEMS NOT RECEIVING FEDERAL AID										
	Move Shed Off R.O.W. Sta. 319+ Force Account	Lump Sum									
	Move Bldg. Off R.O.W. Sta. 322+ Force Account	Lump Sum									
	Move Bldg. Off R.O.W. Sta. 323+ Force Account	Lump Sum									
	NORTH APPROACH TO FAIRPLAY										
13 c	Unclassified Excavation	Cu. Yd.									
13 cx	Uncl. Excav. (Selected Material)	Cu. Yd.									
18 a	Station Yard Overhaul	Sta. Yd.									
18 b	Yard Mile Overhaul	Yd. Mi.									
26 a	Gravel or Crushed Rock Surfacing	Ton									
26 c	Overhaul of Surfacing	Ton Mile									

These items are to be added to totals shown above to secure Project totals.

### GENERAL NOTES

Project is to be constructed in conformity with the Standard Specifications Colorado State Highway Department adopted June 1st, 1937.

Quantities on preliminary plans are to be considered as approximate only.

Excavation required to construct this project is to be obtained as shown on the plans. Quantities involved beyond the limits of the ditch as shown on the plans, either noted on the profile as "Borrow" or on List of Structures, are to be classified and paid for as "Unclassified".

These quantities are to be staked as part of the Original Excavation and subject to change by the Engineer to fit Embankment requirements encountered on construction.

Encroachments are to be super-elevated as provided for by the Standard Super-elevation Tables.

Encroachments on construction are to be moved by owners.

Clearing project is to be cleared for the full width of the Right of Way and the area included in the lump sum price for Clearing and Grubbing the Entire Project.

Corrugated metal pipe cross culverts are to be provided with one end on the inlet end unless otherwise noted on the plans.

Approach roads to the project shall be gravel surfaced with a 4 inch thickness of Gravel or Crushed Rock Surfacing extending approximately 30 feet from the highway. Estimated tonnage of surfacing material required in this is shown in List of Structures.

Payment will be paid for as measured along center line of project except as noted on plans.

When new construction encroaches on present travelled roadway, traffic facilities adequately provided for at the contractor's expense. Also all temporary structures and crossings of intersecting roads shall be constructed and maintained at the contractor's expense.

### R.O.W. MARKERS

STATION	SIDE	NO.
P.W.A. 5002		
1774+43.1	L & R	4
1800+72	L	1
1800+80	R	1
1804+45	R	1
1816+41	L	1
1826+21.3	L & R	4
1839+84.2	L	1
1845+05.4	L & R	4
1853+60	L	1
1854+72	R	1
1873+25	L	1
1883+20	L	1
1883+70	R	1
1895+86	R	1
1897+65	L	1
1916+66	L	1
TOTAL 5002	L & R	25
P.W.A. PROJECT 5002 B		
IN FAIRPLAY		
311+00	L & R	4
320+00	R	1
320+60	L	1
333+70	L	1
334+30	L	1
347+87	L & R	4
354+06	L & R	4
354+65.9	L & R	2
TOTAL 5002B	L & R	18

### FENCING REQUIREMENTS

STATION	SIDE	REMOVE FENCE LIN. FT.	BUILD BARB WIRE FENCE LIN. FT.	BARB WIRE GATES NO.
P.W.A. 5002				
1774+ - 1795+00	L & R		4200	
1771+40	L			1
1795+00 - 1826+00	L & R		6200	
1826+00 - 1857+00	R		3160	
1826+00 - 1840+	L		1430	
1845+ - 1857+00	L		1230	
1853+82	X	120		
1857+00 - 1888+00	L & R		6200	
1883+47	X	120		
1888+00 - 1915+00	L & R		3840	
1889+90 - 1898+30	L & R		860	
1892+50 - 1897+50	L		500	
1915+00 - 1917+00	L & R		400	
P.W.A. PROJECT 5002 B				
IN FAIRPLAY				
315+20	X	70		REMOVE & REBUILD FENCE LIN. FEET
319+80	X	80		
319+80	R			90
320+75	R			160
348+50	R & L		1240	
TOTAL		150	1240	250
OUTSIDE FAIRPLAY				
354+66 - 358+72	L		400	
354+66 - 358+26	R/W		360	
TOTAL			760	
TOTAL 5002 B		150	2000	250

**NOTE:**

All pole lines encroaching on construction are to be moved by owners. Gates, Fencing Requirements and Right of Way Markers are tabulated on sheet N<sup>o</sup> 2

Sta. 1774+43.1 ~ Req'd. Project Marker and 100 Cu. Yds. of Embankment for approach to Project.

N. E. 1/4 SEC. 9  
T. 10 S. R. 77 W.

S. E. 1/4 SEC. 4  
T. 10 S. R. 77 W.

FED. ROAD DIST. NO.	STATE	P.W.A. PROJ. NO.	SHEET NO.	TOTAL SHEETS
3	COLO.	5002	16	

Rev. New Sheet 8-9-37 J.P.K.  
Rev. Grades 10-1-37 J.P.K.

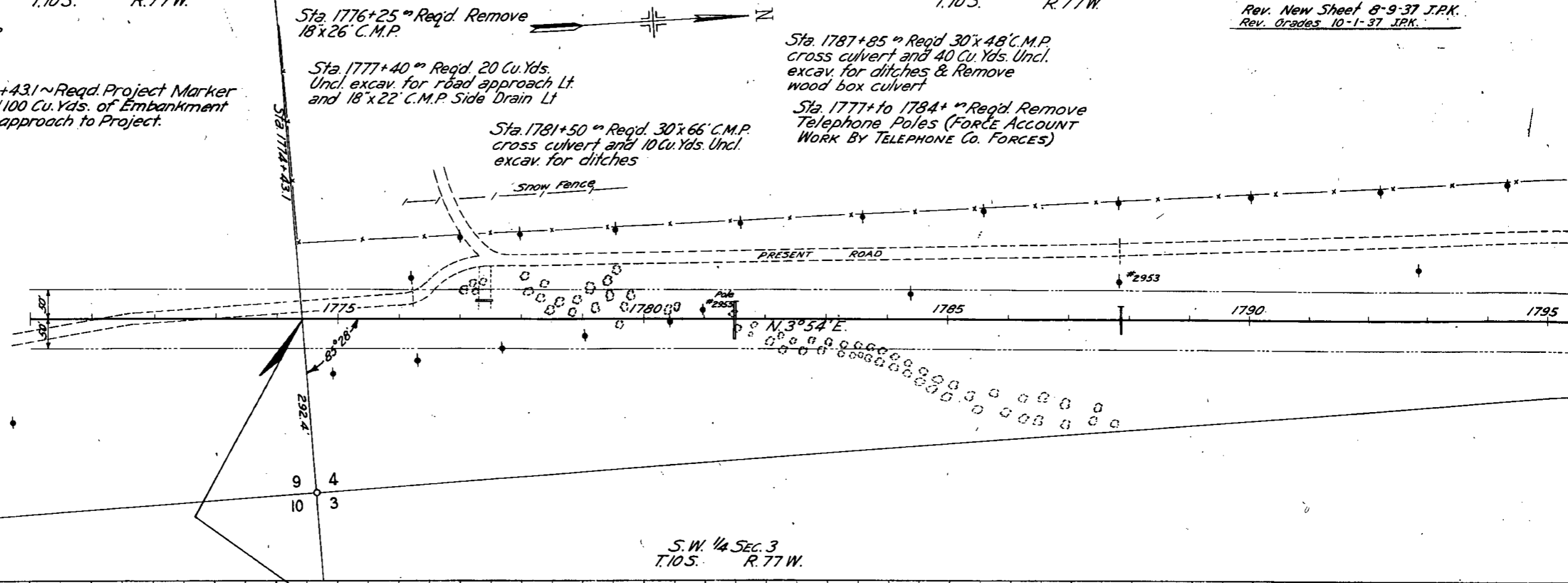
Sta. 1776+25 ~ Req'd. Remove 18'x26' C.M.P.

Sta. 1777+40 ~ Req'd. 20 Cu. Yds. Uncl. excav. for road approach Lt. and 18'x22' C.M.P. Side Drain Lt

Sta. 1781+50 ~ Req'd. 30'x66' C.M.P. cross culvert and 10 Cu. Yds. Uncl. excav. for ditches

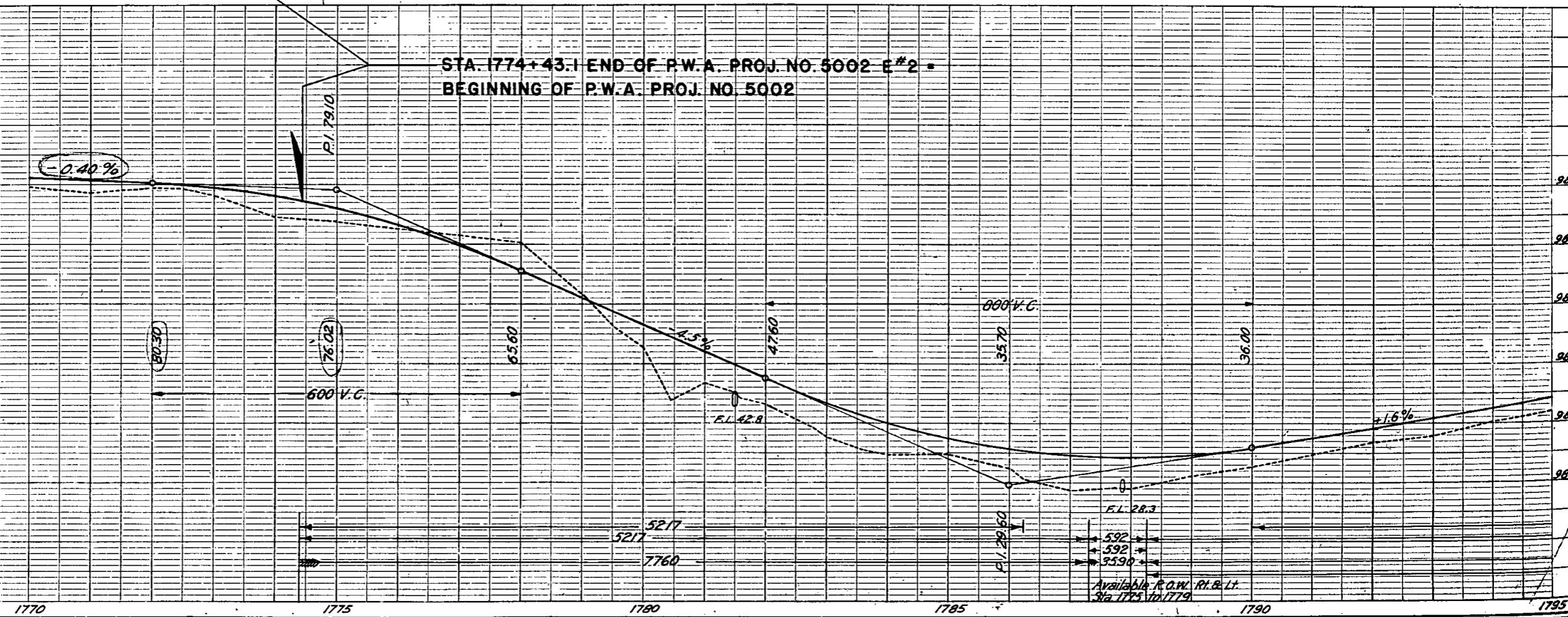
Sta. 1787+85 ~ Req'd. 30'x48' C.M.P. cross culvert and 40 Cu. Yds. Uncl. excav. for ditches & Remove wood box culvert

Sta. 1777+ to 1784+ ~ Req'd. Remove Telephone Poles (FORCE ACCOUNT WORK BY TELEPHONE CO. FORCES)



S. W. 1/4 SEC. 3  
T. 10 S. R. 77 W.

STA. 1774+43.1 END OF P.W.A. PROJ. NO. 5002 E#2  
BEGINNING OF P.W.A. PROJ. NO. 5002



S.E. 1/4 SEC. 4  
T.10S. R.77W.

Sta. 1802+75 Req'd. 24" x 56' C.M.P.  
cross culvert & 20 Cu.Yds. Uncl. Excav.  
for ditches.

N.E. 1/4 SEC. 4  
T.10S. R.77W.

Sta. 1820+00 Req'd. 24" x 46' C.M.P.  
cross culvert and 5 Cu.Yds. Uncl.  
excav. for ditches

Rev. New Sheet 8-9-37 J.P.K.

FED. ROAD DIST. NO.	STATE	P.W.A. PROJ. NO.	SHEET NO.	TOTAL SHEETS
3	COLO.	5002	-17	

Sta. 1811+75 Req'd. 24" x 50' C.M.P.  
cross culvert and 10 Cu.Yds. Uncl.  
excav. for ditches

Sta. 1817+10 Req'd. 24" x 50' C.M.P.  
cross culvert and 5 Cu.Yds. Uncl.  
excav. for ditches

Sta. 1807+ Req'd. Remove  
115' old Railroad Track

Sta. 1819+75 Req'd. 50 Cu.Yds. Emb.  
for road approaches Rt. & Lt.

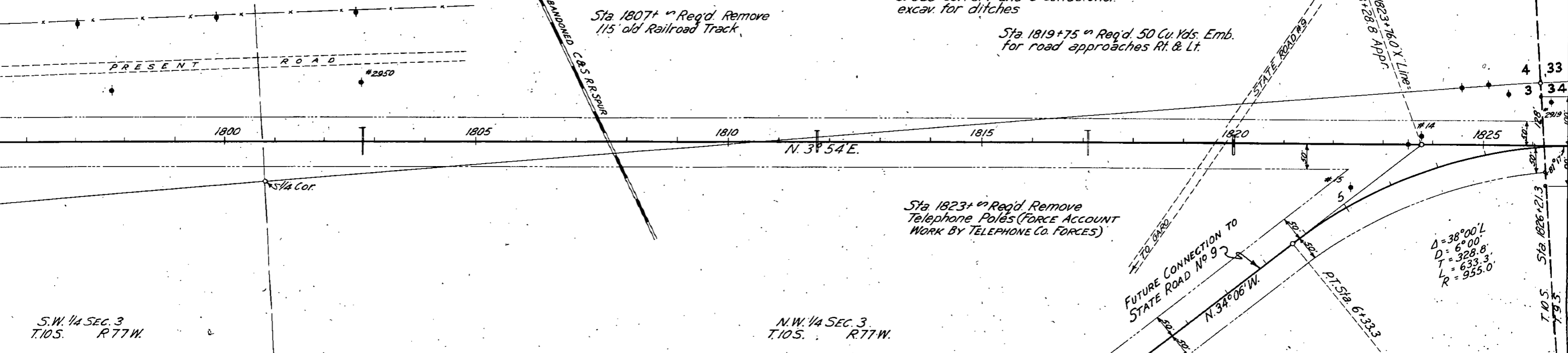
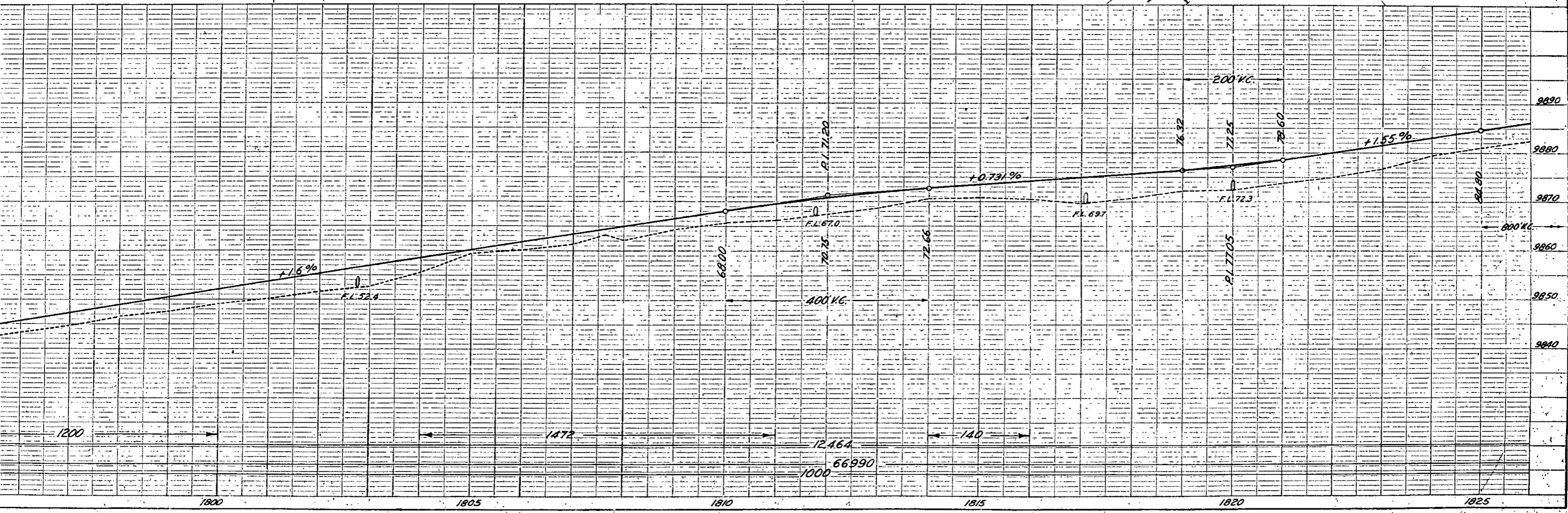
Sta. 1823+ Req'd. Remove  
Telephone Poles (FORCE ACCOUNT  
WORK BY TELEPHONE CO. FORCES)

FUTURE CONNECTION TO  
STATE ROAD No 92

$\Delta = 38^{\circ}00' L$   
 $D = 6^{\circ}00'$   
 $T = 328.8'$   
 $L = 633.3'$   
 $R = 955.0'$

S.W. 1/4 SEC. 3  
T.10S. R.77W.

N.W. 1/4 SEC. 3  
T.10S. R.77W.

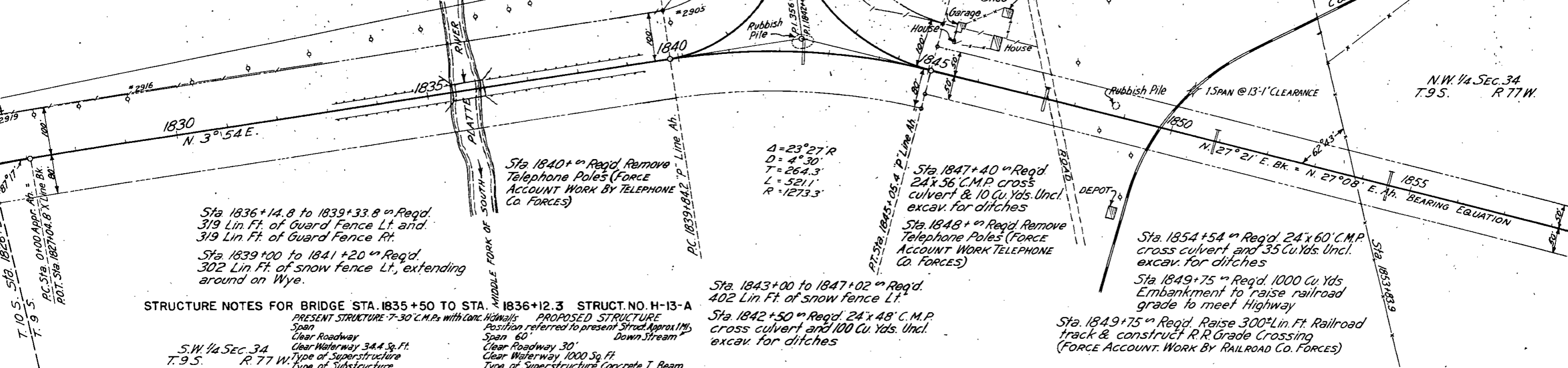




S.E. 1/4 SEC. 33  
T. 9 S. R. 77 W.  
1835+98 to 1833+00 Req'd. 702 Lin. Ft. of snow fence Lt.  
1833+08.5 to 1835+47.5 Req'd. 239 Lin. Ft. of Guard Fence Lt. & 239 Lin. Ft. of Guard Fence Rt.  
1835+50 to 1836+12.3 Req'd. Concrete I-Beam Bridge (Details on sheet 4 and 5.)  
Sta 1826+ Req'd. Remove Telephone Poles (FORCE ACCOUNT WORK BY TELEPHONE CO. FORCES)

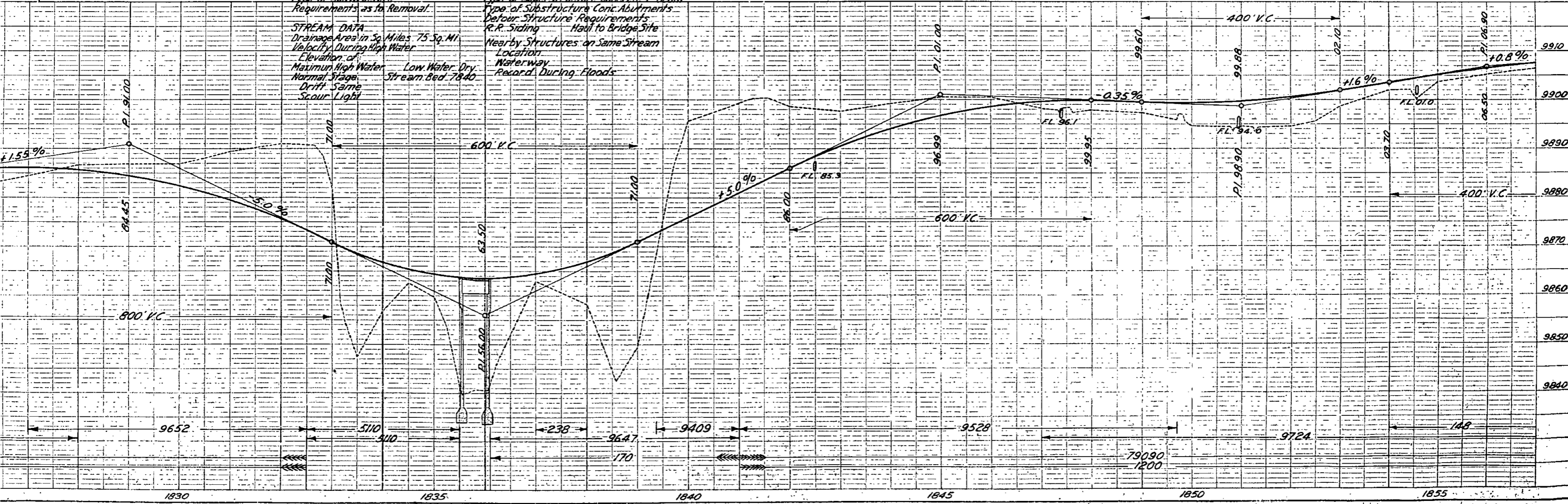
FED. ROAD DIST. NO.	STATE	P.W.A. PROJ. NO.	SHEET NO.	TOTAL SHEETS
3	COLO.	5002	18	

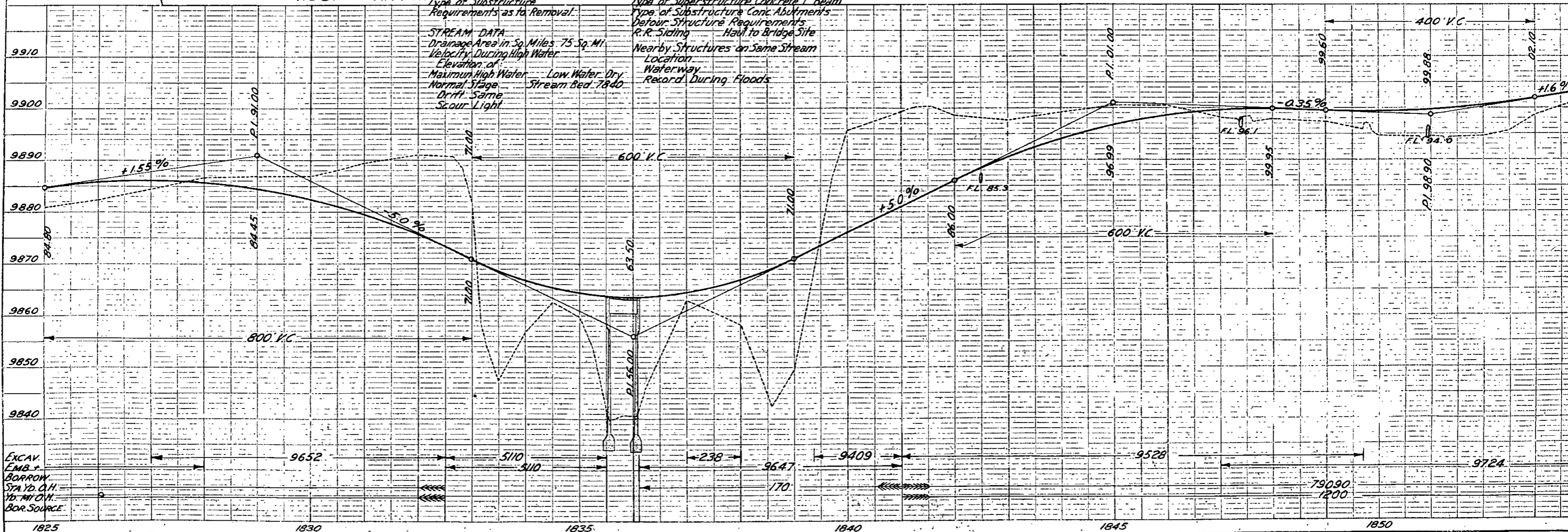
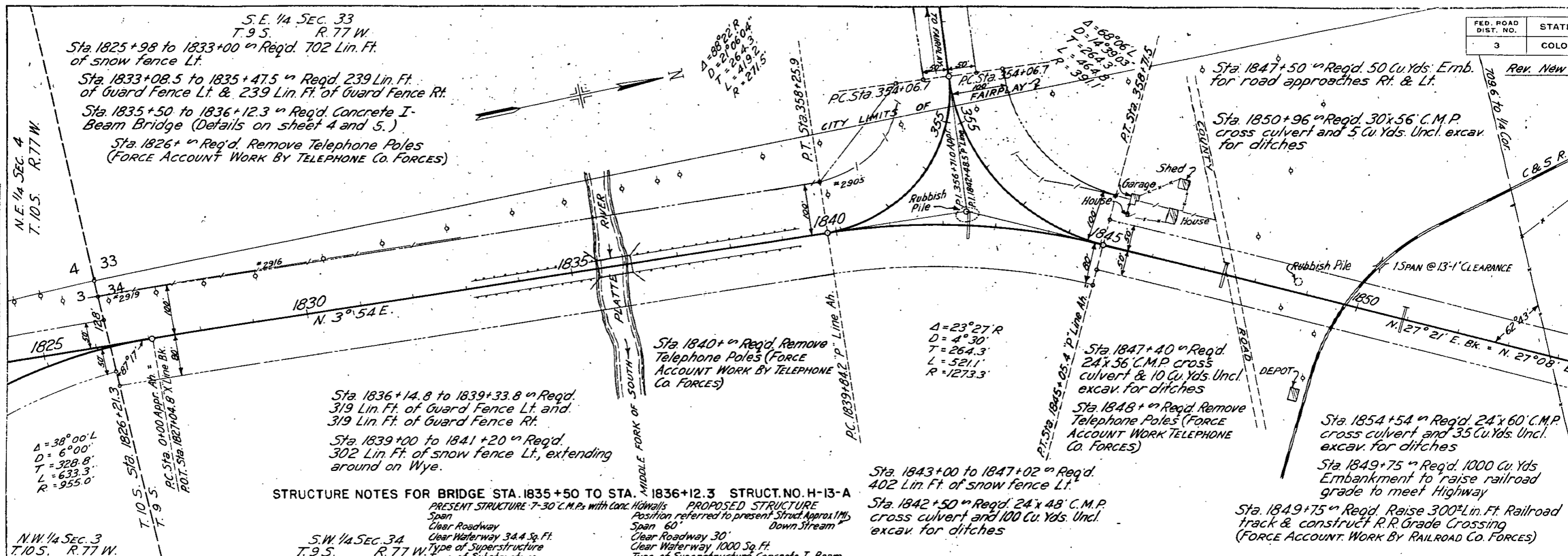
Rev. New Sheet 8-9-37 J.P.K.



**STRUCTURE NOTES FOR BRIDGE STA. 1835+50 TO STA. 1836+12.3 STRUCT. NO. H-13-A**

PRESENT STRUCTURE 7-30 C.M.P.s with Conc. Abutments	PROPOSED STRUCTURE
Span 60'	Position referred to present Struct. Approx 111'6"
Clear Roadway 30'	Down Stream
Clear Waterway 344 Sq. Ft.	
Type of Superstructure Concrete T Beam	
Requirements as to Removal	
<b>STREAM DATA</b>	<b>NEARBY STRUCTURES</b>
Drainage Area in Sq. Miles 75 Sq. Mi.	Haul to Bridge Site
Velocity During High Water	Location
Elevation of Maximum High Water	Waterway
Normal Stage	Reshard During Floods
Drift Same	
Scour Light	





PLAN	DATE
BY	
CHECKED	
REVISIONS	
NO.	DESCRIPTION
1	AS SHOWN

PROFILE	DATE
BY	
CHECKED	
REVISIONS	
NO.	DESCRIPTION
1	AS SHOWN

FED. ROAD DIST. NO.	STATE	P.W.A. PROJ. NO.	SHEET NO.	TOTAL SHEETS
3	COLO.	5002	19	

Rev. New Sheet 8-9-37 J.P.K.

N.W. 1/4 SEC. 34  
T.9S. R.77 W.  
9+10<sup>th</sup> Req'd. 30' x 46' C.M.P. culvert & 5 Cu. Yds. Uncl. for ditches  
1+20<sup>th</sup> Req'd. 24' x 46' C.M.P. culvert  
63+36<sup>th</sup> Req'd. 24' x 48' C.M.P. culvert and 10 Cu. Yds. Uncl. for ditches  
966+30<sup>th</sup> Req'd. 30' x 56' C.M.P. culvert & 30 Cu. Yds. Uncl. for ditches

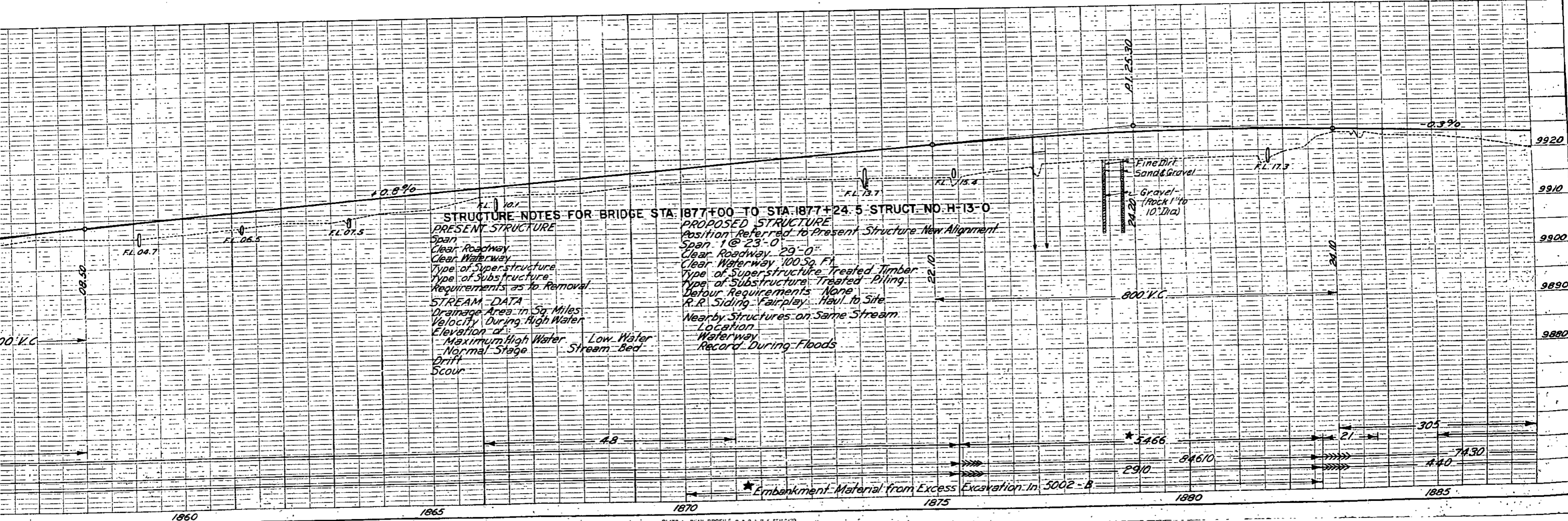
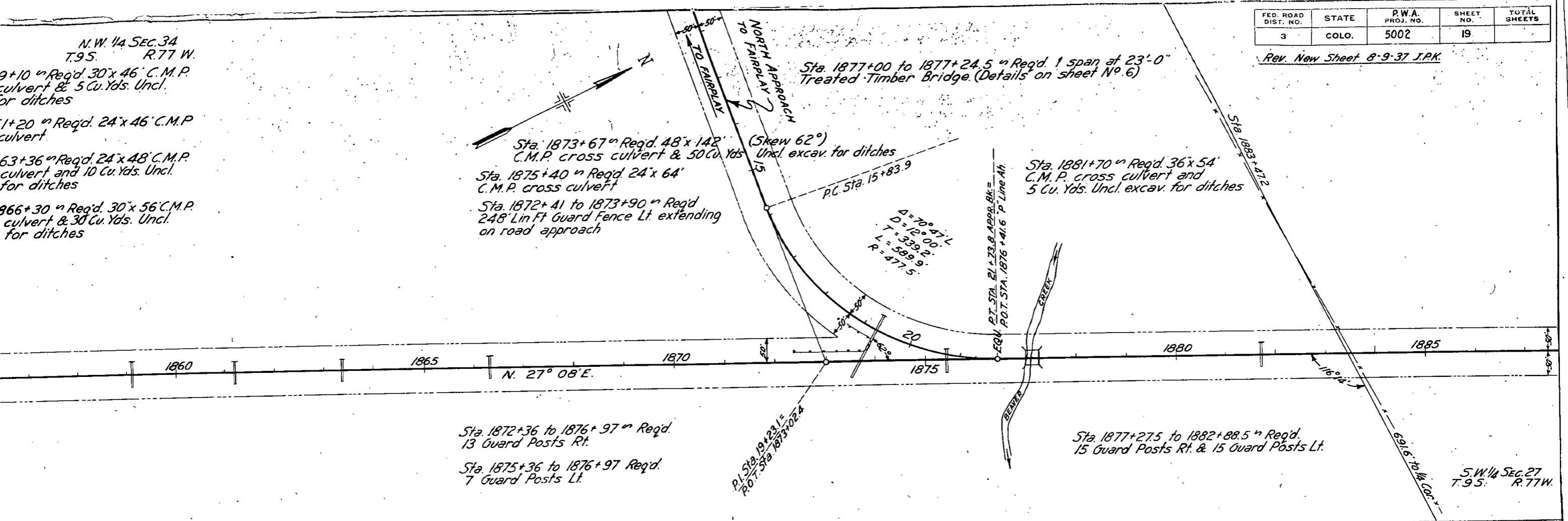
Sta. 1873+67<sup>th</sup> Req'd. 48' x 142' C.M.P. cross culvert & 50 Cu. Yds. Uncl. excav. for ditches (Skew 62°)  
Sta. 1875+40<sup>th</sup> Req'd. 24' x 64' C.M.P. cross culvert  
Sta. 1872+41 to 1873+90<sup>th</sup> Req'd. 248' Lin Ft Guard Fence Lt. extending on road approach

Sta. 1881+70<sup>th</sup> Req'd. 36' x 54' C.M.P. cross culvert and 5 Cu. Yds. Uncl. excav. for ditches

Sta. 1872+36 to 1876+97<sup>th</sup> Req'd. 13 Guard Posts Rt.  
Sta. 1875+36 to 1876+97<sup>th</sup> Req'd. 7 Guard Posts Lt.

Sta. 1877+27.5 to 1882+88.5<sup>th</sup> Req'd. 15 Guard Posts Rt. & 15 Guard Posts Lt.

S.W. 1/4 SEC. 27  
T.9S. R.77W.



DATE  
BY  
CHECKED  
PLANNED  
NOTED BOOK  
NO.

DATE  
BY  
CHECKED  
PLANNED  
NOTED BOOK  
NO.

FED. ROAD DIST. NO.	STATE	P.W. PROJ. NO.
3	COLO.	5002

Rev. New Sheet 8-9-37

N.W. 1/4 SEC. 34  
T.9S. R.77 W.

Sta 1859+10 Req'd. 30' x 46' C.M.P. cross culvert & 5 Cu. Yds. Uncl. excav. for ditches

Sta 1861+20 Req'd. 24' x 46' C.M.P. cross culvert

Sta 1863+36 Req'd. 24' x 48' C.M.P. cross culvert and 10 Cu. Yds. Uncl. excav. for ditches

Sta 1866+30 Req'd. 30' x 56' C.M.P. cross culvert & 30 Cu. Yds. Uncl. excav. for ditches

Sta 1873+67 Req'd. 48' x 142' C.M.P. cross culvert & 50 Cu. Yds. Uncl. excav. for ditches  
Sta 1875+40 Req'd. 24' x 64' C.M.P. cross culvert  
Sta 1872+41 to 1873+90 Req'd. 248' Lin Ft Guard Fence Lt. extending on road approach

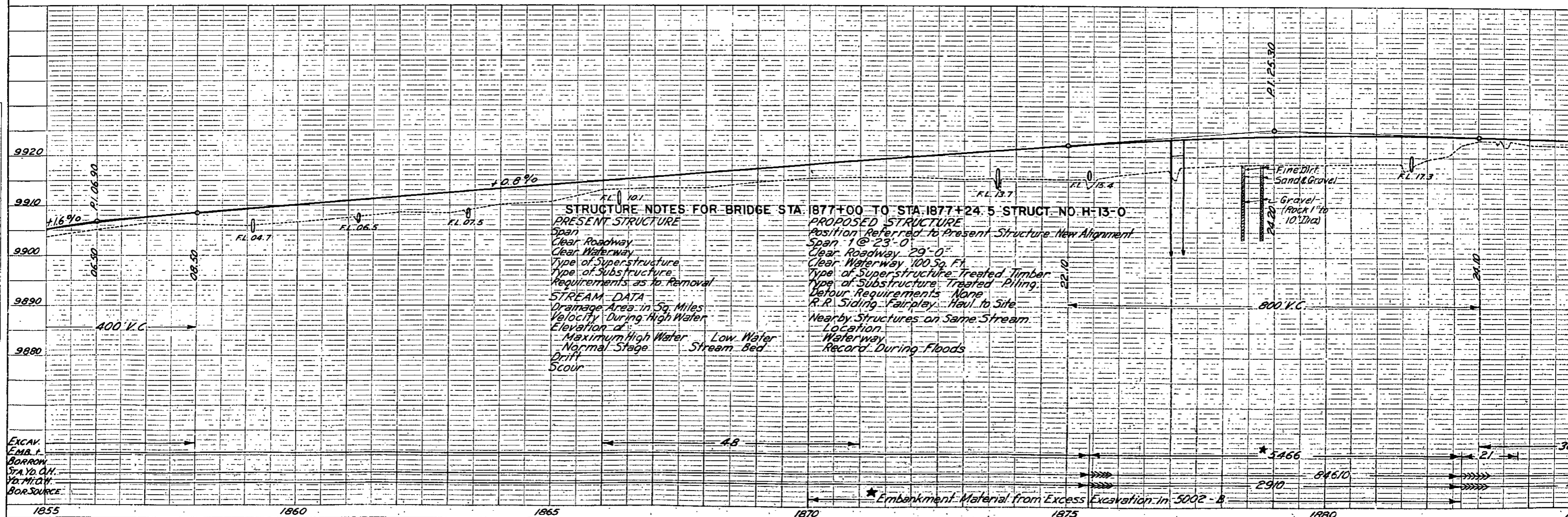
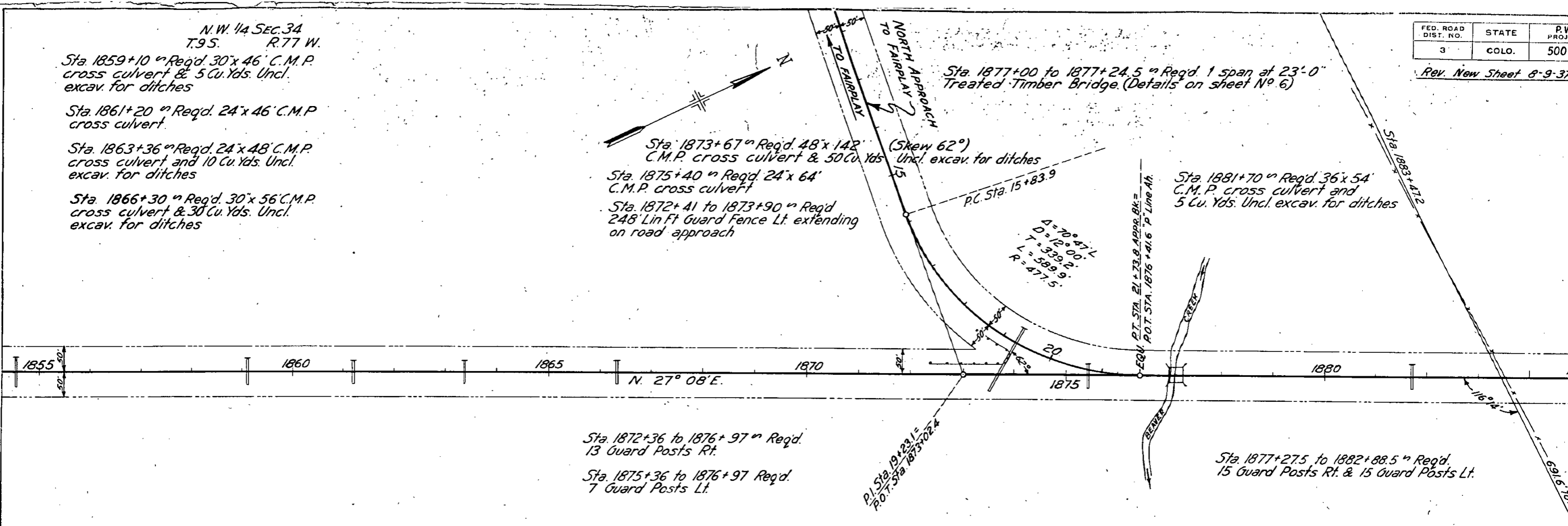
Sta 1877+00 to 1877+24.5 Req'd. 1 span at 23'-0" Treated Timber Bridge (Details on sheet No 6)

Sta 1881+70 Req'd. 36' x 54' C.M.P. cross culvert and 5 Cu. Yds. Uncl. excav. for ditches

Sta 1877+27.5 to 1882+88.5 Req'd. 15 Guard Posts Rt. & 15 Guard Posts Lt.

Sta 1872+36 to 1876+97 Req'd. 13 Guard Posts Rt.

Sta 1875+36 to 1876+97 Req'd. 7 Guard Posts Lt.



**STRUCTURE NOTES FOR BRIDGE STA. 1877+00 TO STA. 1877+24.5 STRUCT. NO. H-13-0**

**PRESENT STRUCTURE**  
Span  
Clear Roadway  
Clear Waterway  
Type of Superstructure  
Type of Substructure  
Requirements as to Removal

**STREAM DATA**  
Drainage Area in Sq. Miles  
Velocity During High Water  
Elevation of  
Maximum High Water  
Normal Stage  
Low Water  
Stream Bed  
Drift  
Scour

**PROPOSED STRUCTURE**  
Position Referred to Present Structure New Alignment  
Span 1 @ 23'-0"  
Clear Roadway 29'-0"  
Clear Waterway 100 Sq. Ft.  
Type of Superstructure Treated Timber  
Type of Substructure Treated Piling  
Detour Requirements None  
R.R. Siding Fairplay Haul to Site  
Nearby Structures on Same Stream  
Location  
Waterway  
Record During Floods

EXCAV.  
EMB.  
BORROW  
STA. Yd. CIV.  
Yd. MICH.  
BOR. SOURCE

\* Embankment Material from Excess Excavation in 5002-B

1/4 SEC. 27  
R.77W.

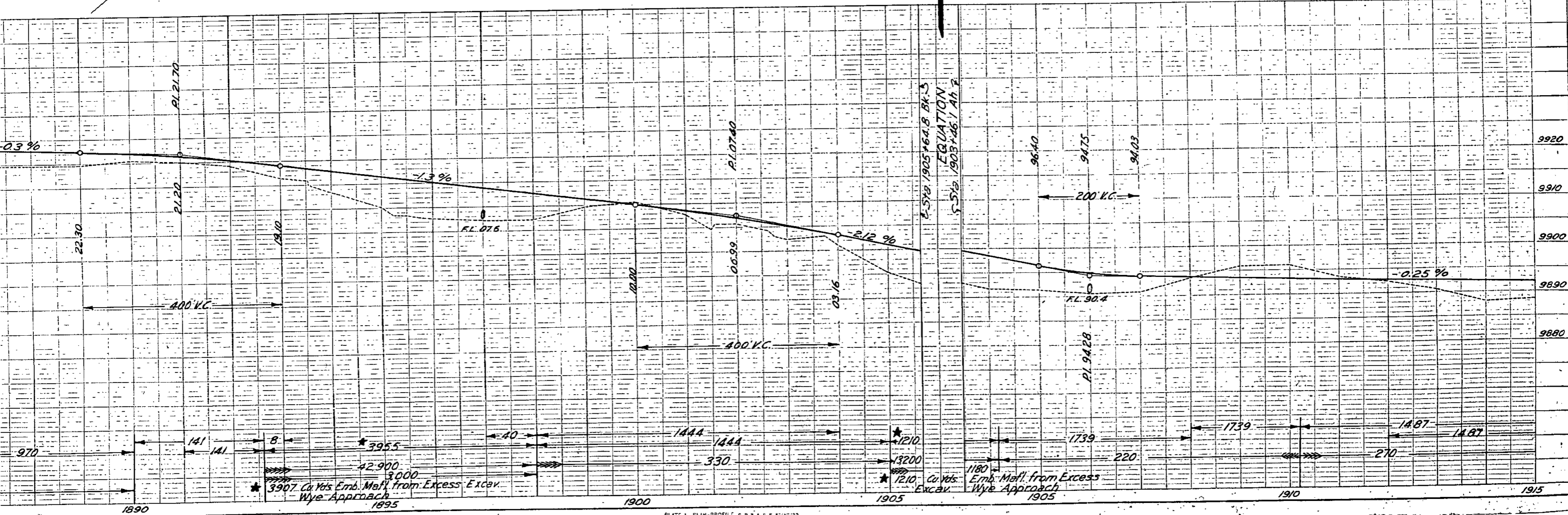
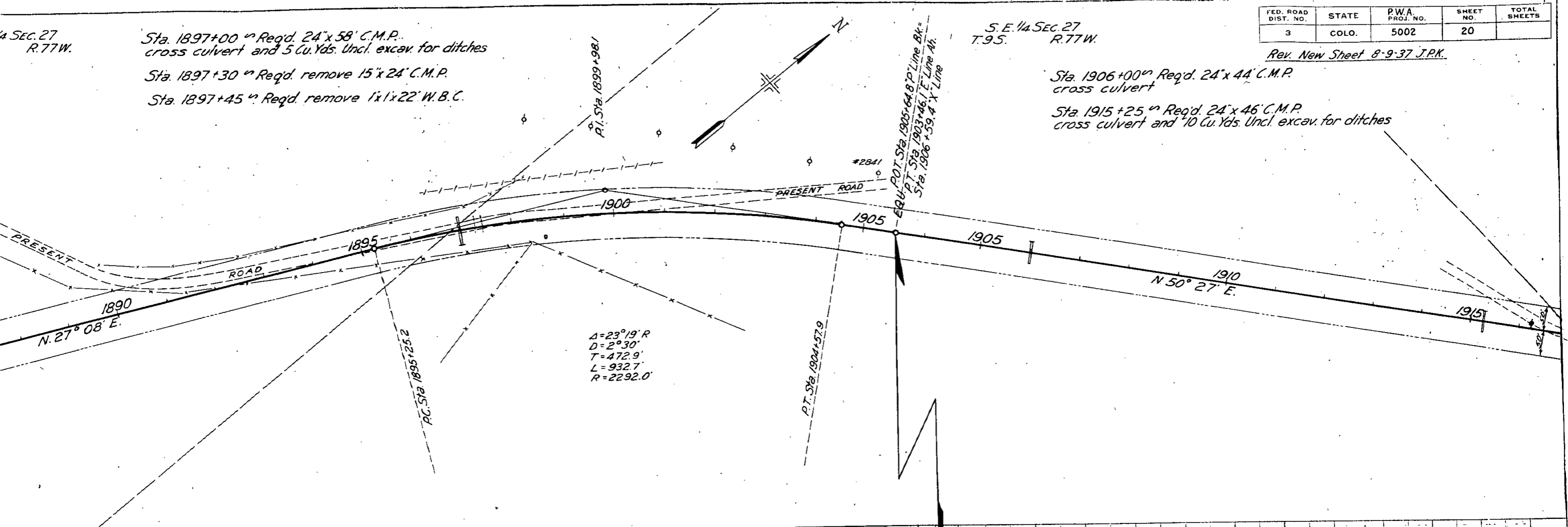
Sta. 1897+00 Req'd. 24'x58' C.M.P.  
cross culvert and 5 Cu. Yds. Uncl. excav. for ditches  
Sta. 1897+30 Req'd. remove 15'x24' C.M.P.  
Sta. 1897+45 Req'd. remove 1'x22' W.B.C.

S.E. 1/4 SEC. 27  
T.95. R.77W.

FED. ROAD DIST. NO.	STATE	P.W.A. PROJ. NO.	SHEET NO.	TOTAL SHEETS
3	COLO.	5002	20	

Rev. New Sheet 8-9-37 J.P.K.

Sta. 1906+00 Req'd. 24'x44' C.M.P.  
cross culvert  
Sta. 1915+25 Req'd. 24'x46' C.M.P.  
cross culvert and 10 Cu. Yds. Uncl. excav. for ditches



970      141      141      8      395.5      40      1444      1444      1210      1739      1739      1487      1487      9920  
 42,900      3,000      330      1180      220      270      9910  
 \* 3907 Cu. Yds. Emb. Mat'l. from Excess Excav. Wye Approach 1895      \* 1210 Cu. Yds. Emb. Mat'l. from Excess Excav. Wye Approach 1905      9890  
 1890      1900      1905      1910      1915

S.W. 1/4 SEC. 27  
T. 95. R. 77W.

Sta. 1897+00 Req'd. 24' x 58' C.M.P.  
cross culvert and 5 Cu. Yds. Uncl. excav. for ditches  
Sta. 1897+30 Req'd. remove 15' x 24' C.M.P.  
Sta. 1897+45 Req'd. remove 1' x 1' x 22' W.B.C.

S.E. 1/4 SEC. 27  
T. 95. R. 77W.

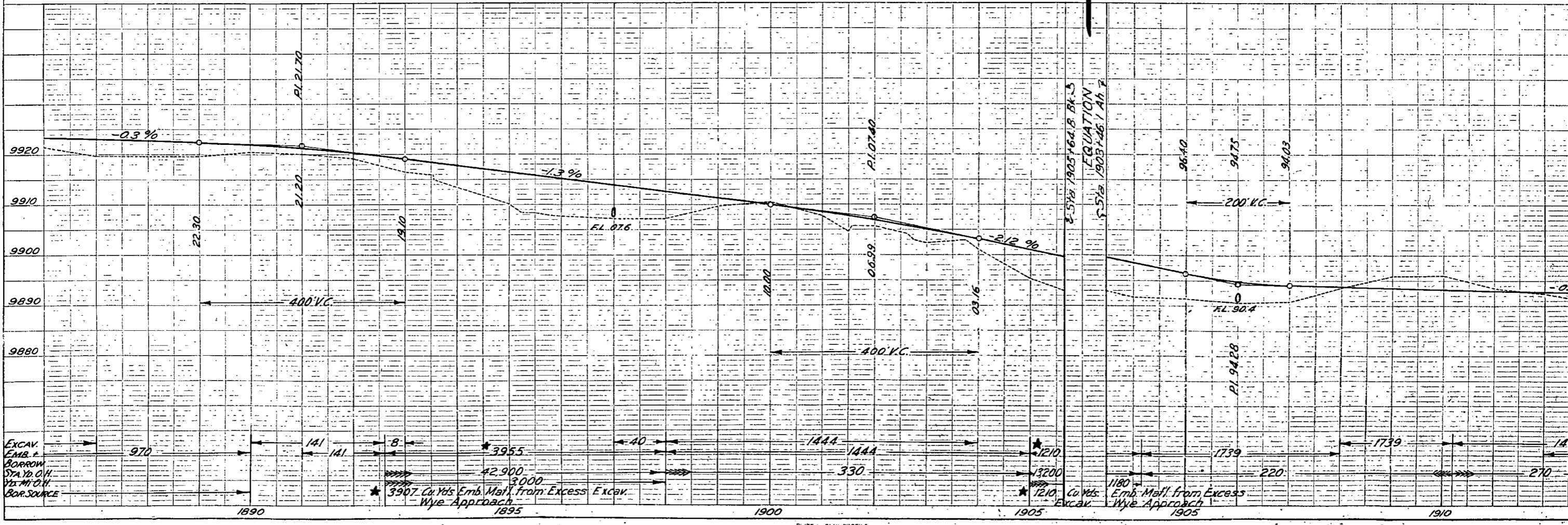
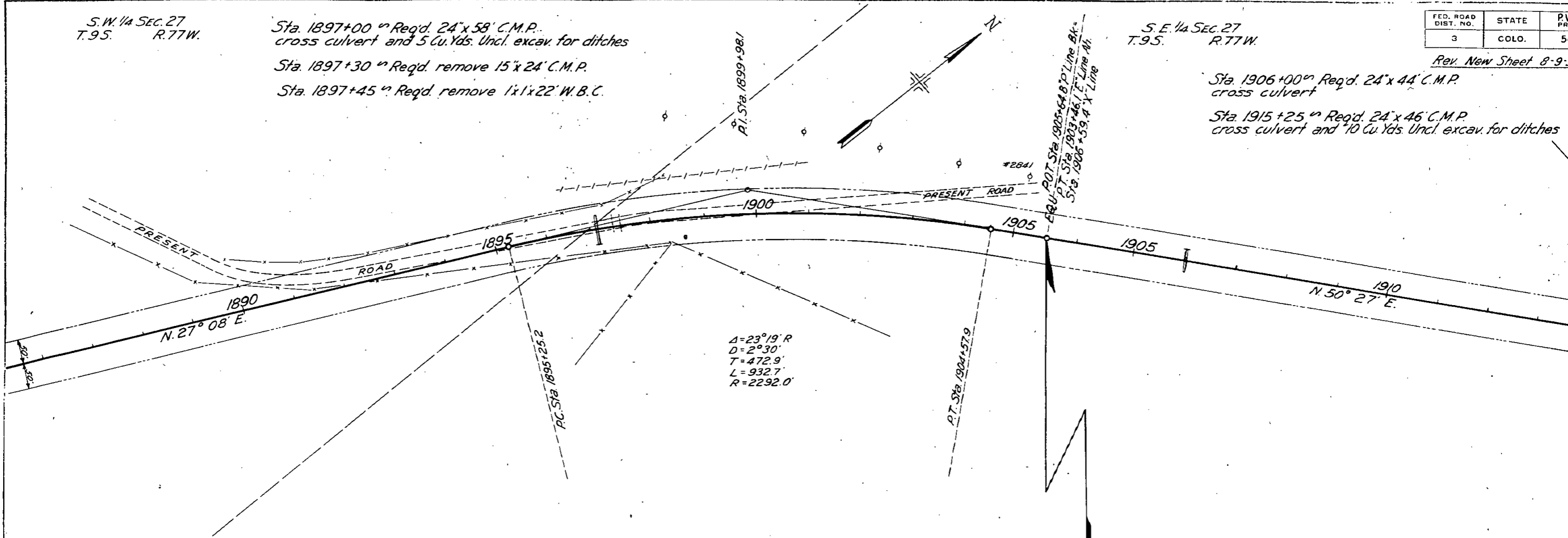
Sta. 1906+00 Req'd. 24' x 44' C.M.P.  
cross culvert  
Sta. 1915+25 Req'd. 24' x 46' C.M.P.  
cross culvert and 10 Cu. Yds. Uncl. excav. for ditches

FED. ROAD DIST. NO.	STATE	P.W. PROJ. NO.
3	COLO.	500

Rev. New Sheet 8-9-31

DATE	BY	CHKD.

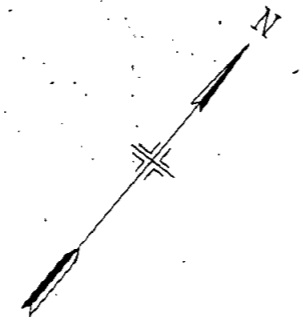
DATE	BY	CHKD.



E 1/4 SEC. 27  
S. R. 77W.

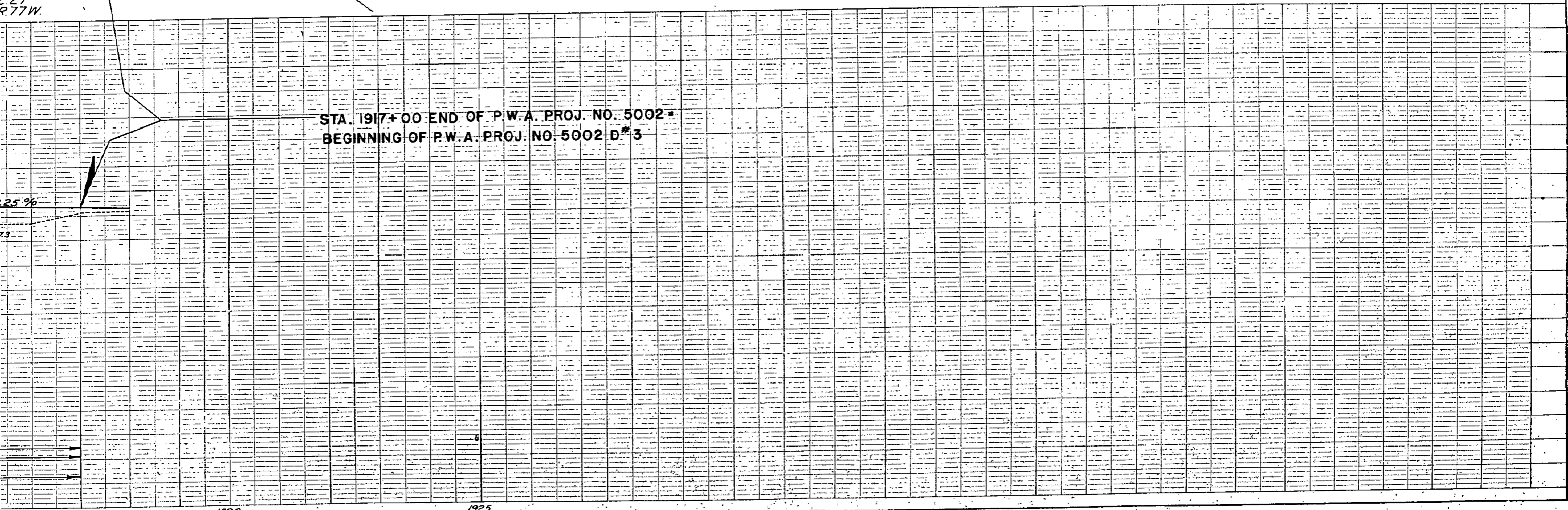
FED. ROAD DIST. NO.	STATE	P.W.A. PROJ. NO.	SHEET NO.	TOTAL SHEETS
3	COLO.	5002	21	

Rev. New Sheet 8-9-37 J.P.K.



Pole #12830  
1920

E 1/4 SEC. 27  
S. R. 77W.



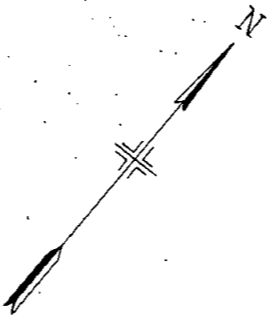
1920

1925

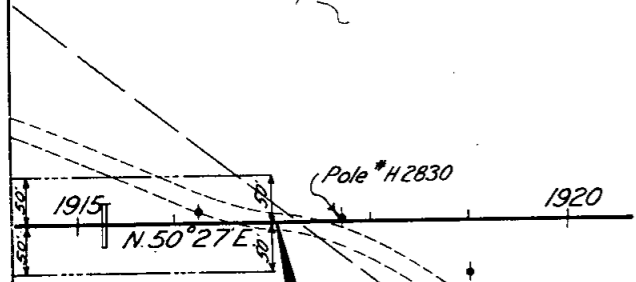
FED. ROAD DIST. NO.	STATE	P.W. PROJ. NO.
3	COLO.	50

Rev. New Sheet 8-9-3

NE 1/4 SEC. 27  
T.9S. R.77W.

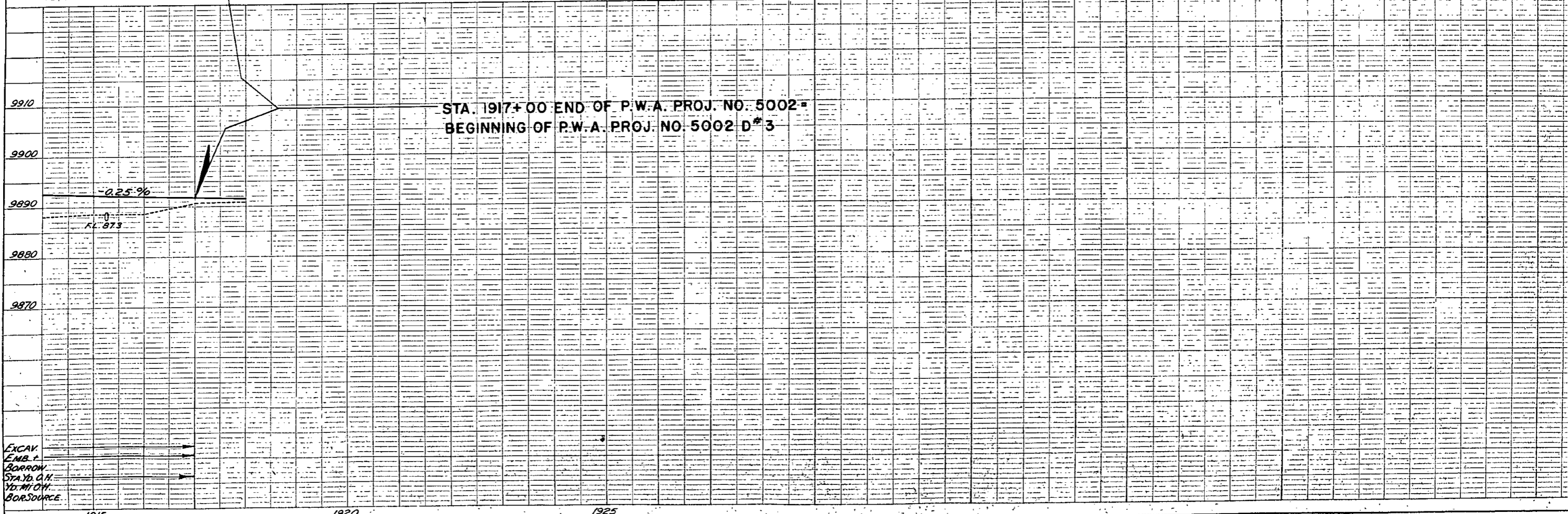


DATE \_\_\_\_\_  
BY \_\_\_\_\_  
PLAN SURVEYED \_\_\_\_\_  
PLOTTED \_\_\_\_\_  
CHECKED \_\_\_\_\_  
SITE WORK \_\_\_\_\_  
BY HIGHWAY CHECKED \_\_\_\_\_  
NO. \_\_\_\_\_



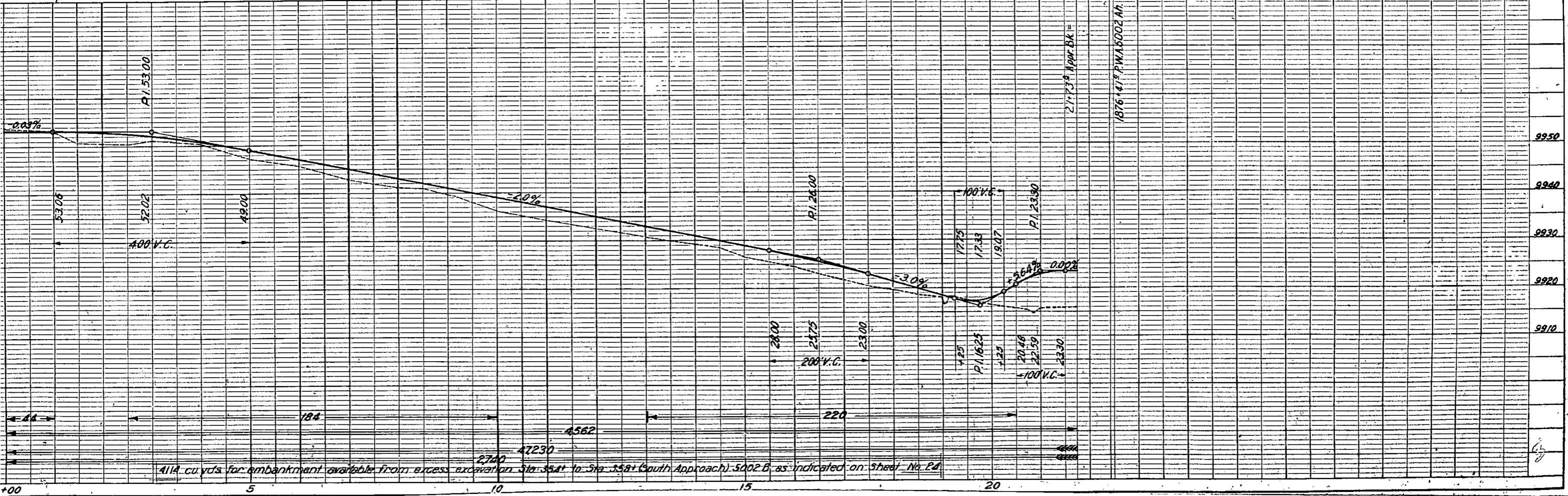
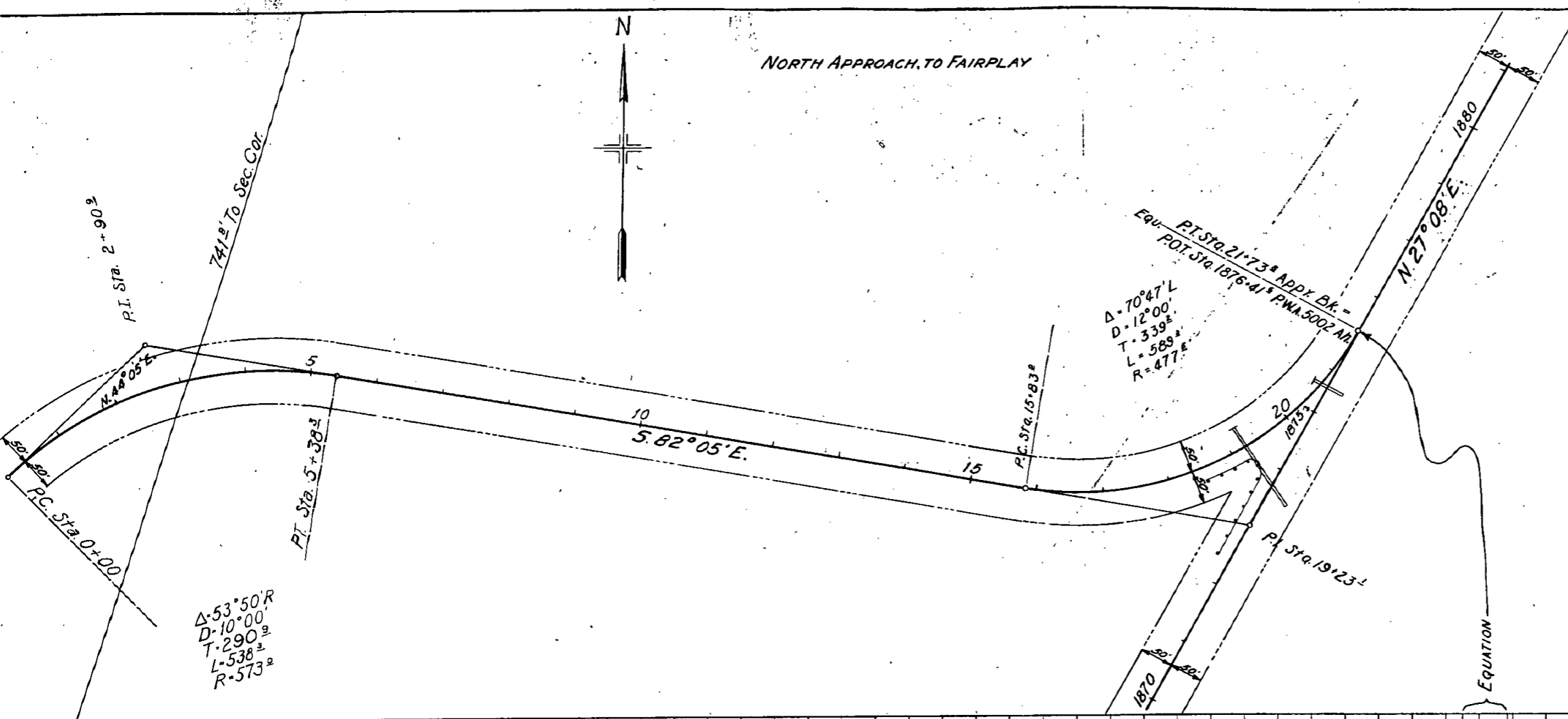
SE 1/4 SEC. 27  
T.9S. R.77W.

DATE \_\_\_\_\_  
BY \_\_\_\_\_  
PROFILE SURVEYED \_\_\_\_\_  
PLOTTED \_\_\_\_\_  
CHECKED \_\_\_\_\_  
NOTE BOOK NO. \_\_\_\_\_  
BY HIGHWAY CHECKED \_\_\_\_\_  
STRUCTURE NO. \_\_\_\_\_  
BY HIGHWAY CHECKED \_\_\_\_\_  
NO. \_\_\_\_\_



FED. ROAD DIST. NO.	STATE	P.W.A. PROJ. NO.	SHEET NO.	TOTAL SHEETS
3	COLO.	5002	22	

Rev. New Sheet 8-9-37 S.A.S.  
 Rev. Profile data note 9-3-37 h.b.m.



FED. ROAD DIST. NO.	STATE	P.W. PROJ.
3	COLO.	5002

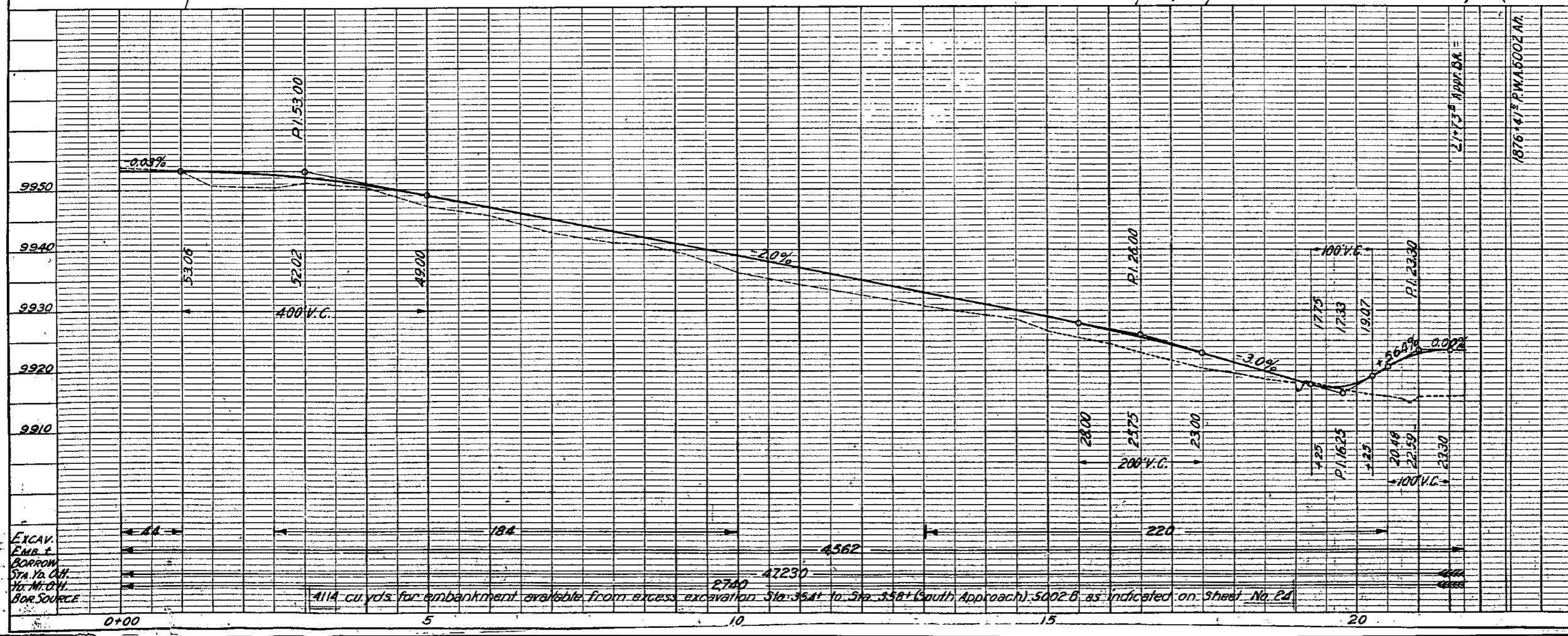
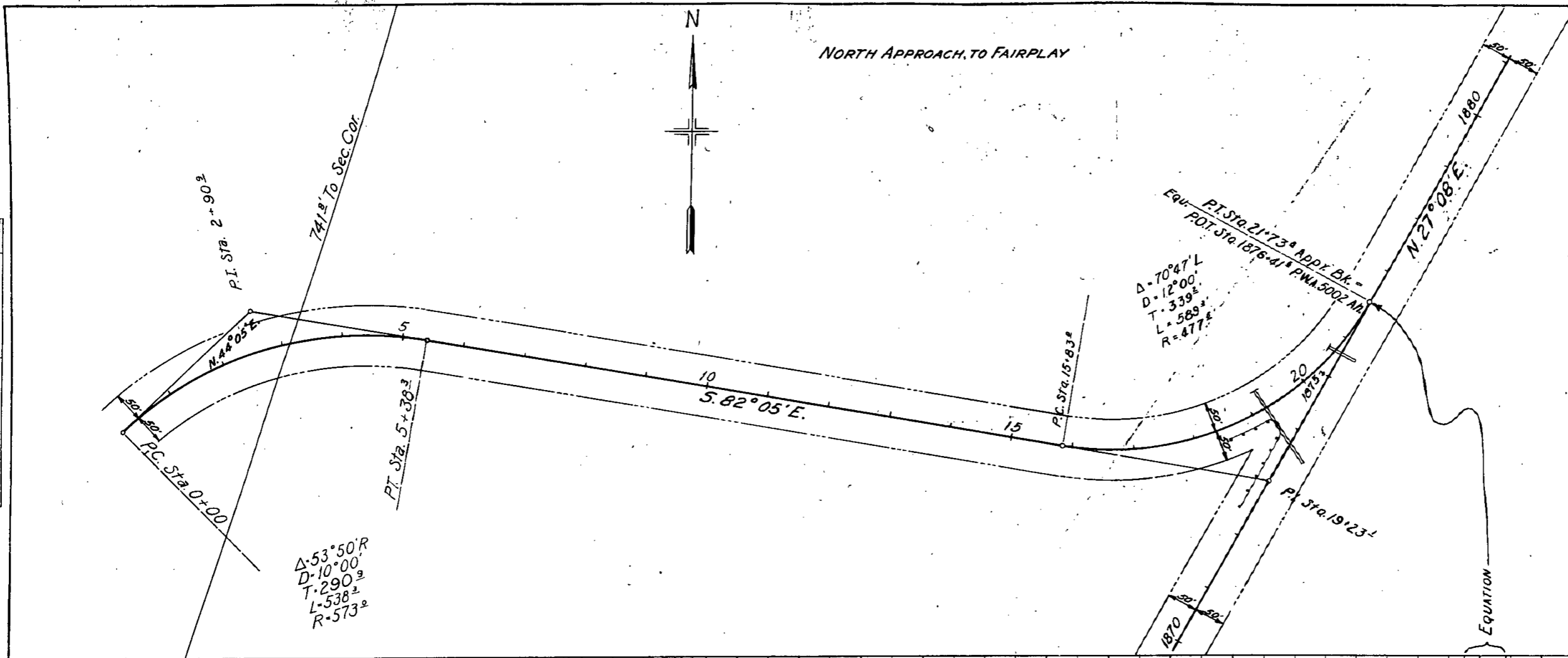
Rev. New Sheet 8-9-37  
 Rev. Profile data note 9-3-

NORTH APPROACH TO FAIRPLAY



PLAN	SURVEYED	DATE
	PLOTTED	
	ALIGNED CHECKED	
	BY	
	NO.	

PROFILE	SURVEYED	DATE
	PLOTTED	
	GRADES CHECKED	
	BY	
	NO.	



EXCAV.  
 EMB.  
 BORROW  
 STA. TO CUT  
 HOR. M. C. V.  
 BOR. SOURCE

4114 cu yds for embankment available from excess excavation Sta. 354+ to Sta. 358+ (South Approach), 5002 B, as indicated on Sheet No. 24

NOTE: All pole lines encroaching on construction are to be moved by owners. Fencing requirements, gates, and right of way markers are tabulated on Sheet No. 2.

NE 1/4 Sec. 33, T.9 S. R.77 W.

Sta. 322'20" - Req'd remove 1 1/2" x 1 1/8" W.B.C. & 12" x 8 1/2" Sheet Metal Culvert.

Sta. 328'50" - Req'd 15" x 16" C.M.P. side drain & 30 cu. yds. Uncl. Excav. for road approach Rt. & remove 12" x 42" C.M.P.

FED. ROAD DIST. NO.	STATE	F.W.A. PROJ. NO.	SHEET NO.	TOTAL SHEETS
3	COLO.	5002 B	23	

Rev. 4-23-37 - h.b.m. oil proc. sidewalk, 1-culvert Alignment

Sta. 339'00" - Req'd 18" x 30" C.M.P. side drain Rt. & 100 cu. yds. Emb. for road approaches Rt. & Lt. & remove W.B.C.

Sta. 319' to 338' - Req'd 1490 sq. yds. Oil processed sidewalk & 100 cu. yds. Uncl. Excav. for constructing side-walks listed below.

Sta. 319'65" to 321'88" Rt. 125 sq. yds.

322'35" - 329'55" Rt. 220 sq. yds.

322'50" - 329'55" Lt. 225 sq. yds.

330'05" - 334'15" Lt. & Rt. 460 sq. yds.

334'65" - 338'75" Lt. & Rt. 460 sq. yds.

00 - Req'd 4000 Emb. for Front St. ch.

11'00" to 314'42" - Req'd 2 lin. ft. Picket snow fence Lt.

10'00" to 312'04" - Req'd 104 lin. ft. Guard fence Rt.

104 - Req'd Guard fence Rt.

Sta. 315'23" - Req'd 24" x 74" C.M.P. cross culvert & 30 cu. yds. Uncl. Excav. for ditches & 24" x 40" C.M.P. culvert across present road for irrigation ditch Rt.

Sta. 317'50" - Req'd 18" x 38" C.M.P. side drain Lt. & 700 cu. yds. Uncl. Excav. for road approaches Rt. & Lt.

Sta. 320'80" to 321'90" - Req'd 30 cu. yds. Uncl. Excav. for ditch change Lt.

Sta. 321'90" - Req'd 18" x 62" C.M.P. cross culvert & 20 cu. yds. Uncl. Excav. for ditches.

Sta. 322' - Req'd irrigation & drainage work. (FORCE ACCOUNT)

Sta. 322'20" - Req'd 18" x 40" C.M.P. side drain Lt. (FORCE ACCOUNT)

Sta. 322' - Req'd move stone building off R.O.W. (FORCE ACCOUNT) (No Fed. Aid)

Sta. 323' - Req'd move building off R.O.W. (FORCE ACCOUNT) (No Fed. Aid)

Sta. 328'50" - Req'd 15" x 16" C.M.P. side drain & 30 cu. yds. Uncl. Excav. for road approach Rt. & remove 12" x 42" C.M.P.

Sta. 328'80" - Req'd 15" x 16" C.M.P. side drain & 30 cu. yds. Uncl. Excav. for road approach Rt. & remove 18" x 16" C.M.P.

Sta. 329'55" - Req'd 18" x 62" C.M.P. cross culvert & 25 cu. yds. Uncl. Excav. for ditches.

Sta. 329'60" - Req'd remove 160 sq. ft. side walk.

Sta. 329'90" - Req'd 20 cu. yds. Uncl. Excav. & 30 cu. yds. Emb. for road approaches Rt. & Lt.

Sta. 330'10" - Req'd remove 150 sq. ft. side walk.

Sta. 332'40" - Req'd 18" x 16" C.M.P. side drain & 20 cu. yds. Uncl. Excav. for road approach Rt. & remove structure.

Sta. 334'24" - Req'd 18" x 62" C.M.P. cross culvert & 10 cu. yds. Uncl. Excav. for ditches & remove W.B.C.

Sta. 319'65" to 321'88" Rt. 125 sq. yds.

322'35" - 329'55" Rt. 220 sq. yds.

322'50" - 329'55" Lt. 225 sq. yds.

330'05" - 334'15" Lt. & Rt. 460 sq. yds.

334'65" - 338'75" Lt. & Rt. 460 sq. yds.

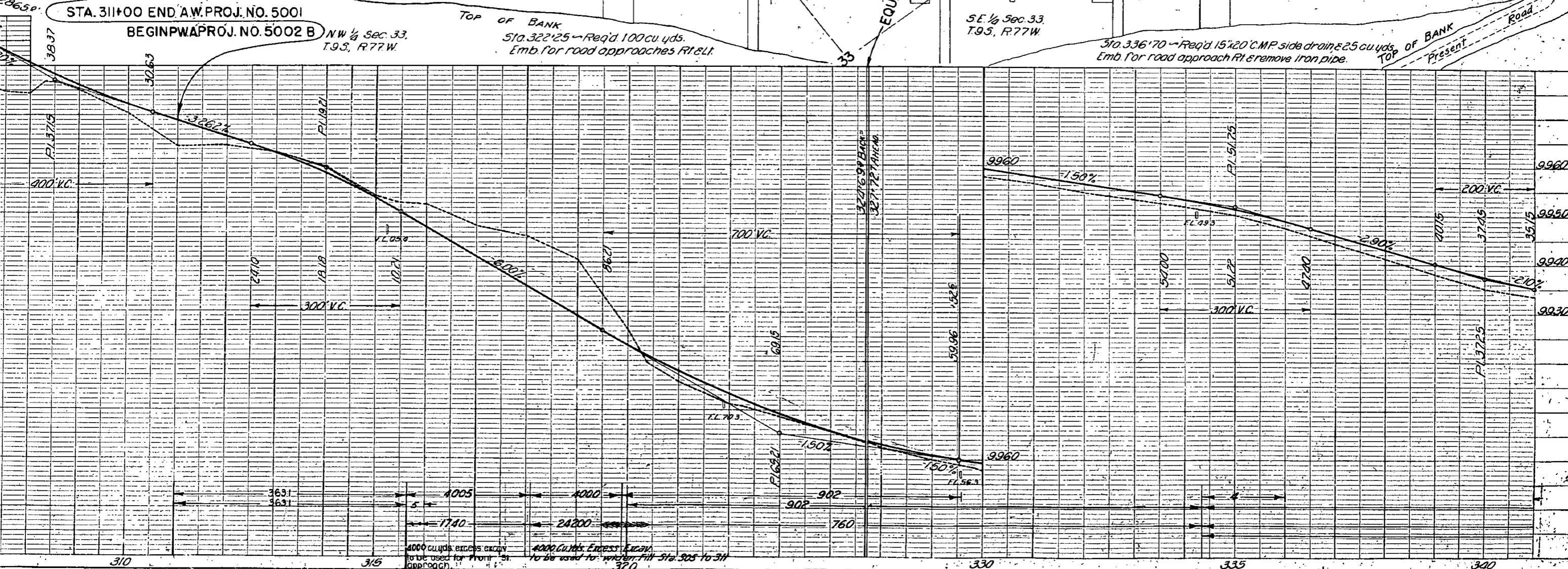
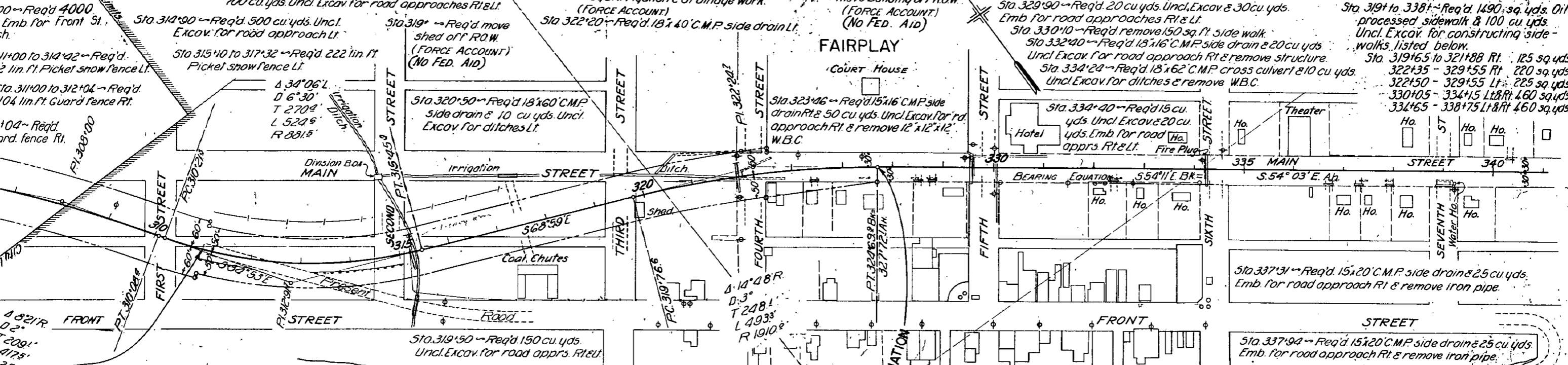


PLATE 1 - PLAN-PROFILE OF F. R. & R. STANFORD

FED. ROAD DIST. NO.	STATE	P. NO.
3	COLO.	5

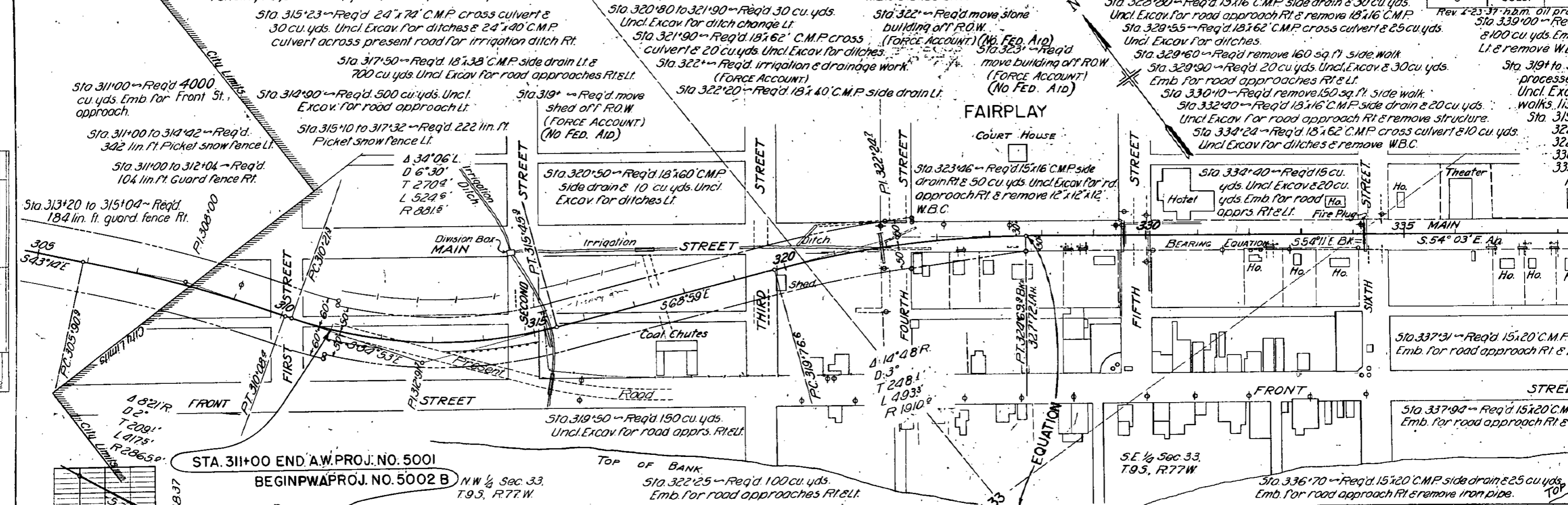
NOTE: All pole lines encroaching on construction are to be moved by owners. Fencing requirements, gates, and right of way markers are tabulated on Sheet No. 2.

NE 1/4 Sec. 33, T.9.S, R.77.W

Sta. 322'20" - Req'd remove 12"x18" W.B.C. & 12"x85" Sheet Metal Culvert.

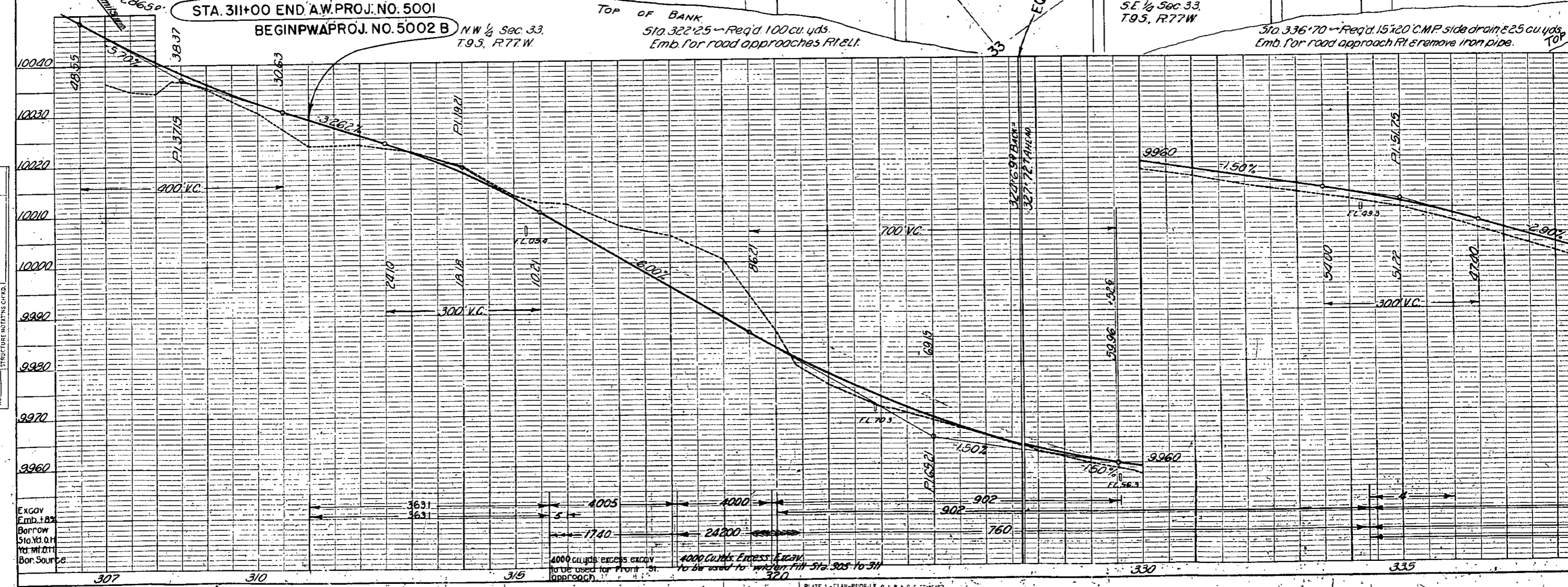
Sta. 323'50" - Req'd 15"x16" C.M.P. side drain & 30 cu. yds. Uncl. Excav. for road approach Rt. & remove 12"x42" C.M.P.

Rev. 4-23-37 - h.m. oil proc. Sta. 339'00" - Req'd 8'100 cu. yds. Emb. Lt. & remove W.B.C.



PLAN SURVEYED, PLOTTED, & CHECKED. NOTE BOOK, DIST. & WAY CHECKED. NO.

PROFILE DATE BY. NOTE: ELEV. GRADES CHECKED. B.M.S. NOTED. STRUCTURE NOTATIONS CHECKED.



Excav. Emb. 18% Borrow Sta. Yd. 0.1 Yd. Mt. 0.1 Bor. Source

4000 cu. yds. EXCESS EXCAV. to be used for Front St. approach. 4000 cu. yds. EXCESS EXCAV. to be used to wind up fill Sta. 305 to 311.



