

FED. ROAD DIST. NO.	STATE	P.W.A. PROJ. NO.	SHEET NO.	TOTAL SHEETS
3	COLO.	81-A	1	

COLORADO STATE HIGHWAY DEPARTMENT

PLAN AND PROFILE OF PROPOSED P.W.A. DOCKET COLO. 804-D PROJECT NO. 81-A STATE HIGHWAY NO. 2

JEFFERSON COUNTY

SCALES OF ORIGINAL TRACINGS

ON PLAN, 1 IN. = 100 FT.
ON PROFILE, 1 IN. = 100 FT. HORIZONTAL
1 IN. = 10 FT. VERTICAL
GRADE LINE ON PROFILE IS SHOWN AS GRADE OF FINISHED ROAD
GROSS LENGTH OF PROJECT } 3,239.3 FT. = 5.916 MI.
NET LENGTH OF PROJECT }

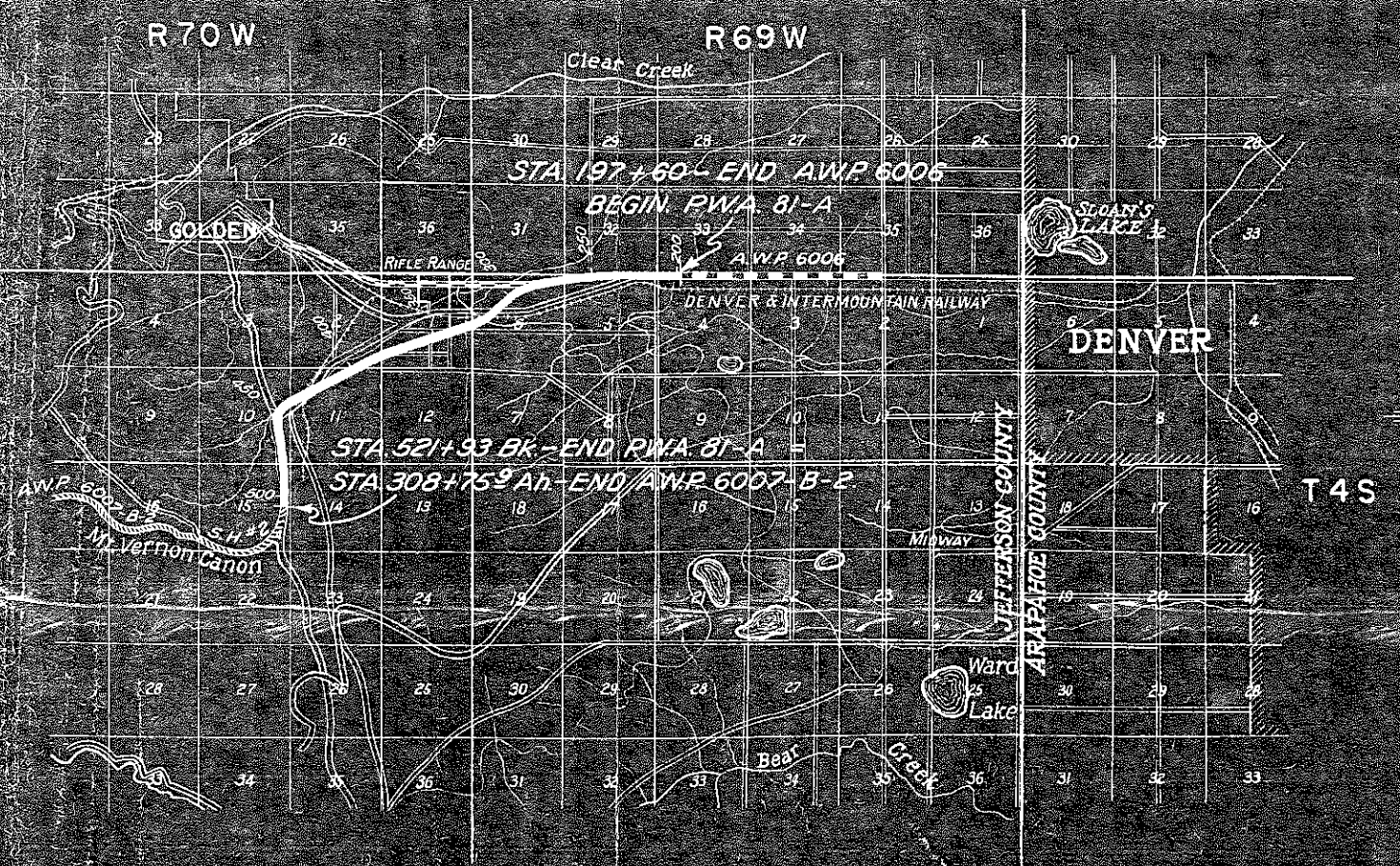
CONVENTIONAL SIGNS

- CENTER LINE OF SURVEY
- R.O.W. LINES
- TOWNSHIP & RANGE LINES
- SECTION LINES
- QUARTER SECTION LINES
- SIXTEENTH SECTION LINES
- R.R. TRACKS
- BARBED WIRE FENCE
- WOVEN WIRE FENCE
- TELEPHONE LINES
- PRESENT ROAD

Microfilm
T-#88

INDEX OF SHEETS

SHEET NO.	TITLE SHEET
2	TYPICAL SECTIONS AND R.O.W. MARKERS
3-4	LIST OF STRUCTURES AND SUMMARY
5	DETAILS OF DIVISION BOX & SIPHON DRAIN, FENCE LIST
6-8	DETAILS OF BRIDGE STA. 201+
9	DETAILS OF SPECIAL 10' x 3' C.B.C. STA. 305+
10	(RESERVED FOR UNDERPASS DETAILS) STA. 310+
11	CONCRETE BOX CULVERTS M-103-D
12	DOUBLE CONCRETE BOX CULVERT M-110-B
13	STANDARD HEADWALLS FOR C.M.P. CULVERT M-102-E
14	STANDARD C.M.P. SIPHONS M-123-A
15	STANDARD TIMBER GUARD POSTS M-19-A
16	STANDARD WIRE CABLE GUARD FENCE M-20-B
17	STANDARD WIRE FENCE (TR. WD. POSTS) M-24-F
18	STANDARD STRUCTURE NUMBER LETTERING M-10-A
19	STANDARD METHODS FOR SUPERELEVATION CURVES M-1-B
20	TYPICAL SIDE APPR. RDS. / TRAFFIC SIGNS M-2-BX
21-31	PLAN & PROFILE
32-32A	PLAN & PROFILE OF D&TM MAIN LINE & SHOO FLY TRACKS
33-140	CROSS SECTIONS (ROADWAY)
141-148	CROSS SECTIONS (D&TM)



NOTE

It is recommended that bidders on this Project go over the plan details with one of the following field representatives of this Department:

E. E. Montgomery	Division Engineer	Denver
D. W. Ormsbee	Construction Engineer	"
F. W. Miller	Resident Engineer	"



RECOMMENDED FOR APPROVAL

ASSISTANT ENGINEER

APPROVED

Chas. D. Wait
STATE HIGHWAY ENGINEER

RECOMMENDED FOR APPROVAL

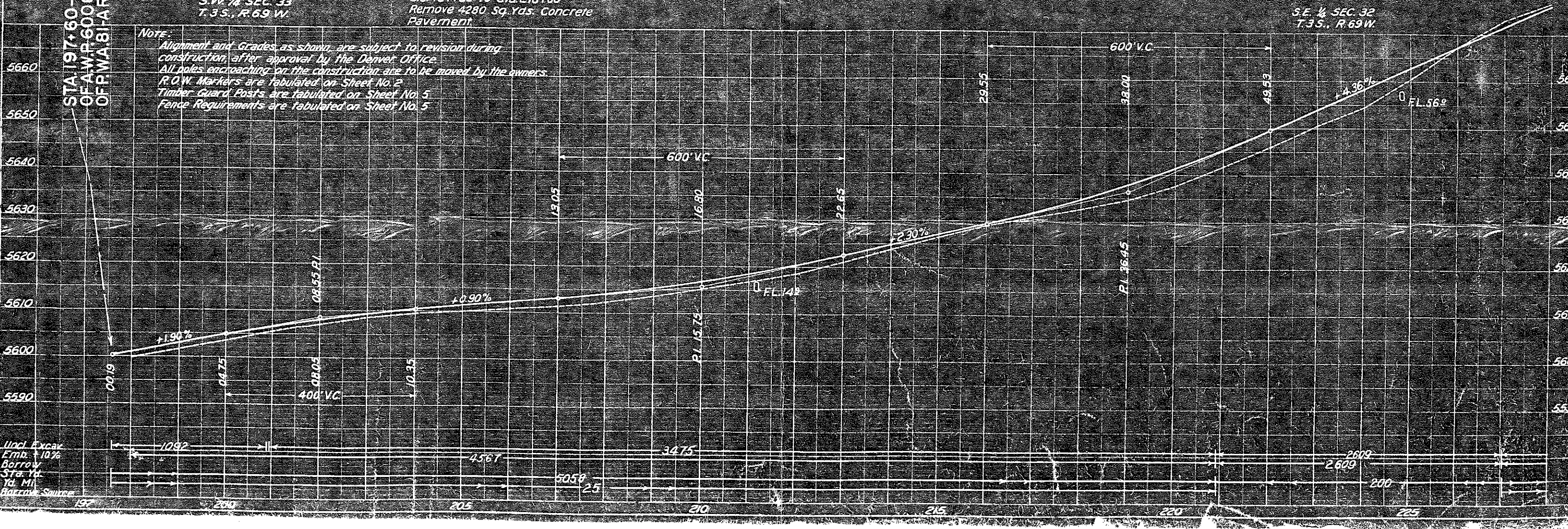
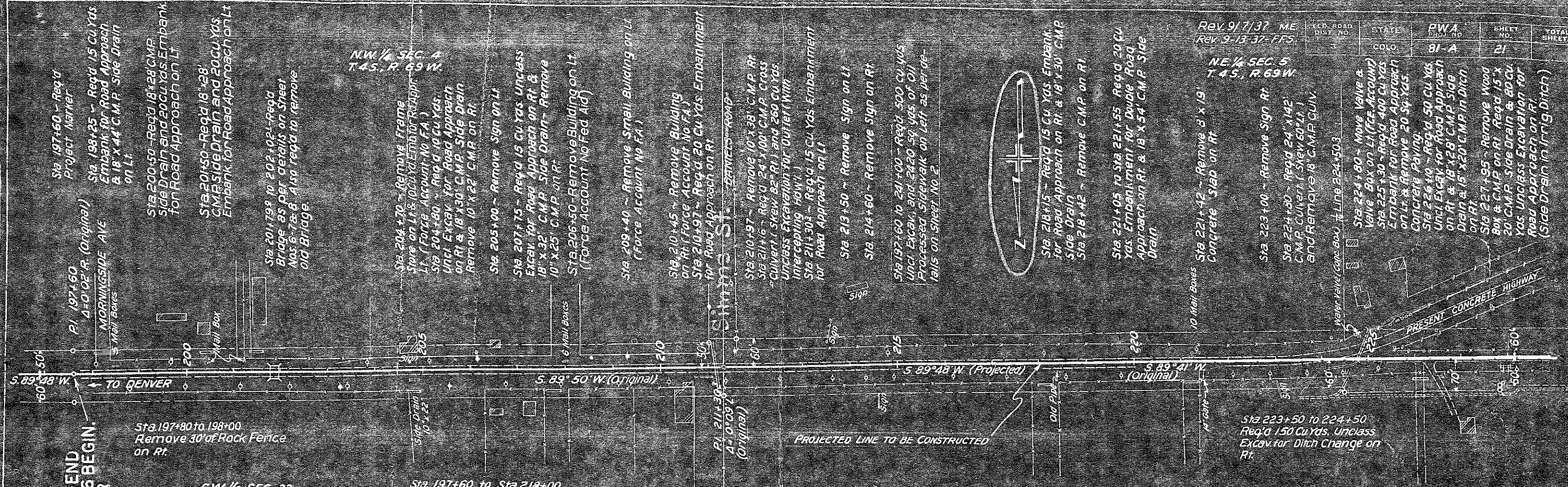
DIST. ENG. BUREAU PUBLIC ROADS

RECOMMENDED FOR APPROVAL

CHIEF ENG. BUREAU PUBLIC ROADS

APPROVED

DIRECTOR BUREAU PUBLIC ROADS



NOTE:
 Alignment and Grades as shown, are subject to revision during construction after approval by the Denver Office.
 All poles encroaching on the construction are to be moved by the owners.
 R.O.W. Markers are tabulated on Sheet No. 2
 Timber Guard Posts are tabulated on Sheet No. 5
 Fence Requirements are tabulated on Sheet No. 5

Uncl. Excav. Emb. 10% Borrow Sta. Yr. To Mt. Rockline Source

Sta 228+08 - Req. 24' x 94' C.M.P. Culvert with Intersecting Hdwl and 5 Cu Yds. Uncl. Exca. for Inlet.

Sta 230+15 - Remove Well from P.O. W. Lt. (Force Account No Fed Aid)

Sta 230+30 - Req. 18' x 28 C.M.P. Side Drain Rt. and 140 Cu Yds. Uncl. Exca. for Road Approach on Rt. 15' x 20' C.M.P. in ditch

Sta 230+50 - Remove House on Rt. (Force Account No FA)

Sta 231+15 - Req. 18' x 28 C.M.P. Side Drain Rt. and 150 Cu Yds. Uncl. Exca. for Road Approach on Rt. 15' x 20' C.M.P. in ditch

Sta 231+80 - Remove House on Rt. (Force Account No Fed Aid)

Sta 235+35 - Req. 18' x 26 C.M.P. Side Drain Rt. and 100 Cu Yds. Embank. for Road Approach on Rt. and 15' x 20' C.M.P. in ditch

Sta 237+21 - Remove Electric Pump & Appurts on Lt. (Force Account No Fed Aid) 237+705

Sta 237+25 - Remove Well from ROW on Lt. (Force Account - No Fed Aid)

Sta 237+65 - Req. 18' x 28 C.M.P. Side Drain Lt. and 100 Cu Yds. Uncl. Exca. for Road Approach on Lt.

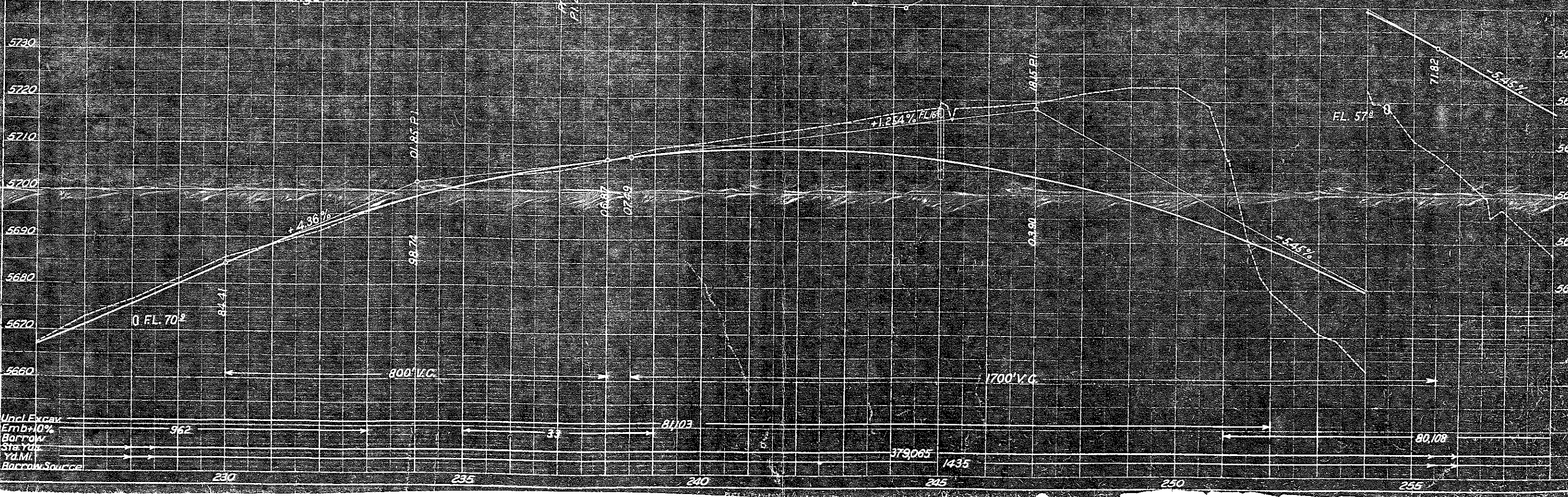
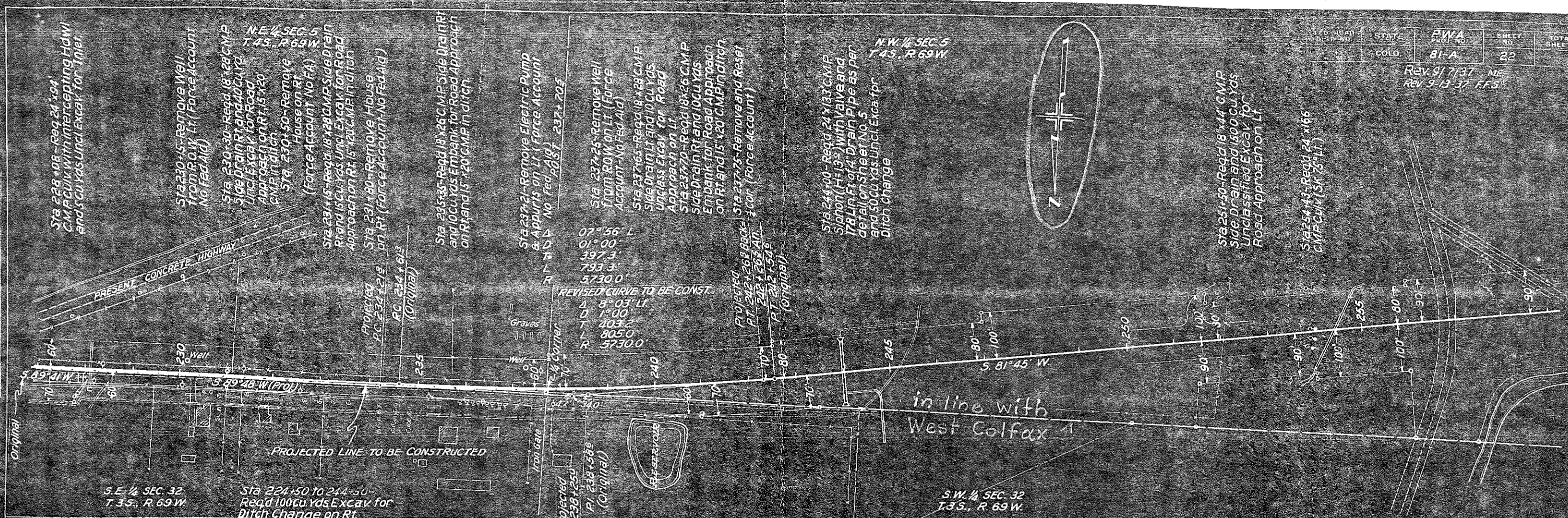
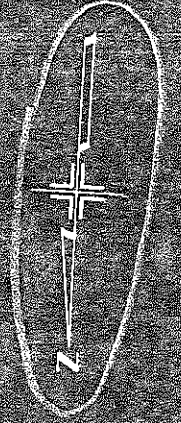
Sta 237+70 - Req. 18' x 26 C.M.P. Side Drain Rt. and 100 Cu Yds. Embank. for Road Approach on Rt. and 15' x 20' C.M.P. in ditch

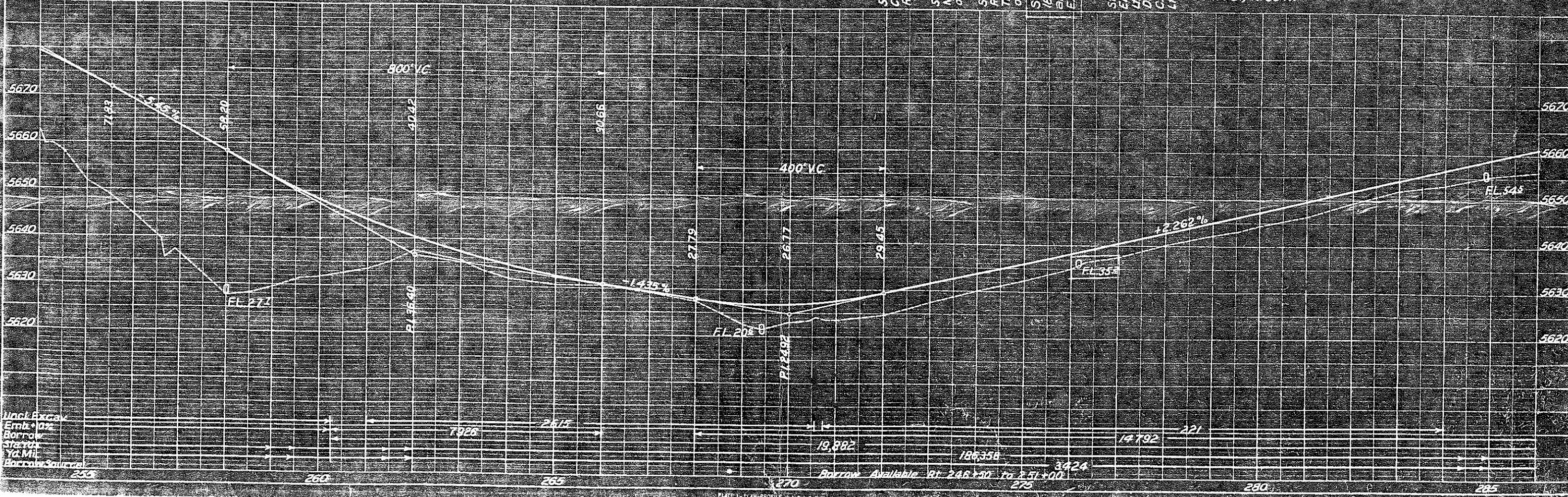
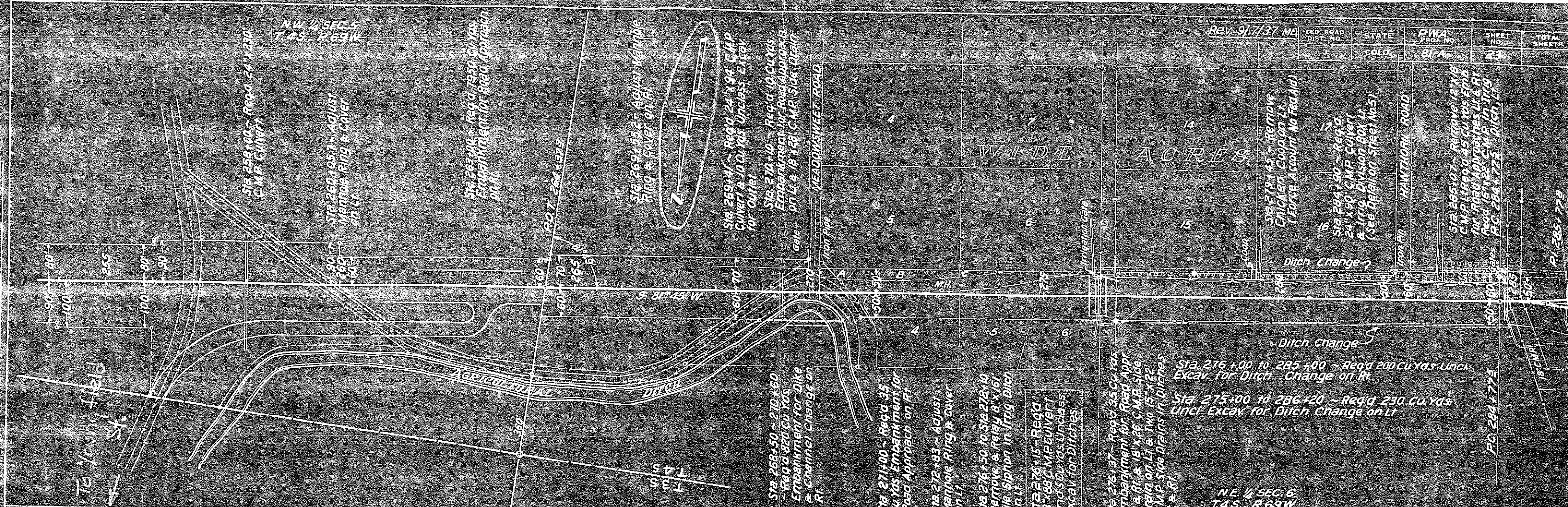
Sta 237+75 - Remove and Reset 4' cor. (Force Account)

Sta 244+00 - Req. 24' x 33 C.M.P. Siphon (H=19') with Valve and 178 Lin. Ft. of 4" Drain Pipe as per detail on Sheet No. 5 and 50 Cu Yds. Uncl. Exca. for Ditch change

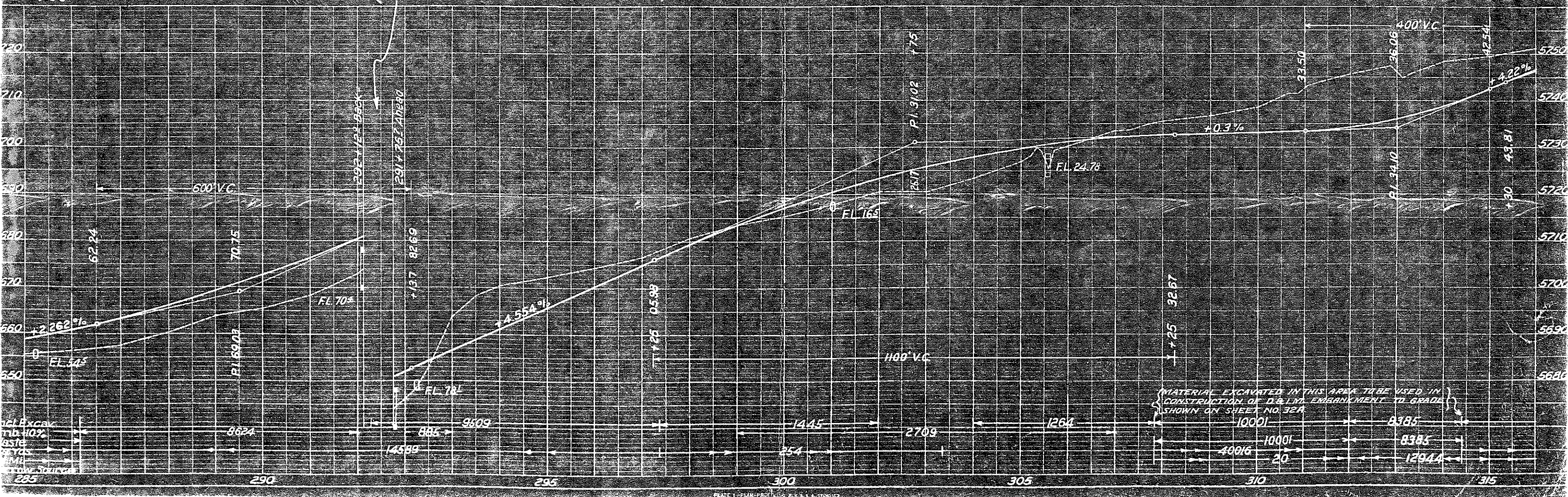
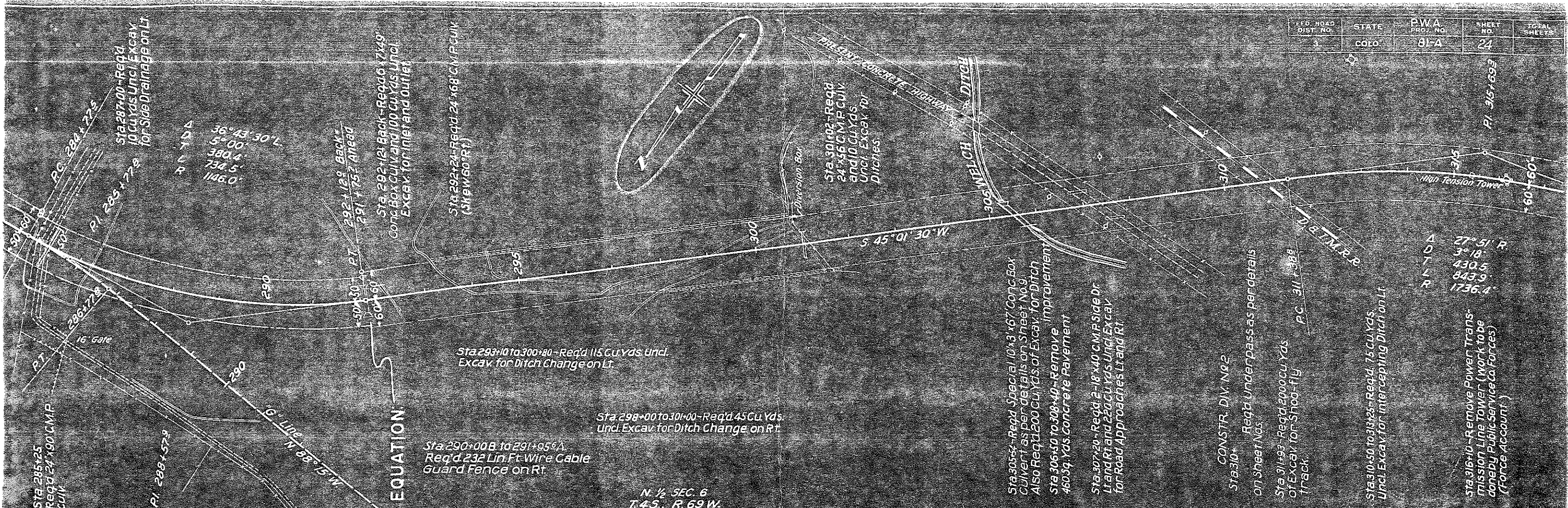
Sta 251+50 - Req. 18' x 44' C.M.P. Side Drain and 1800 Cu Yds. Unclassified Exca. for Road Approach on Lt.

Sta 254+43 - Req. 24' x 166 C.M.P. Culv. (Sk. 75' Lt.)





LEG. ROAD DIST. NO.	STATE	PWA PROJ. NO.	SHEET NO.	TOTAL SHEETS
3	COLO.	81-A	24	

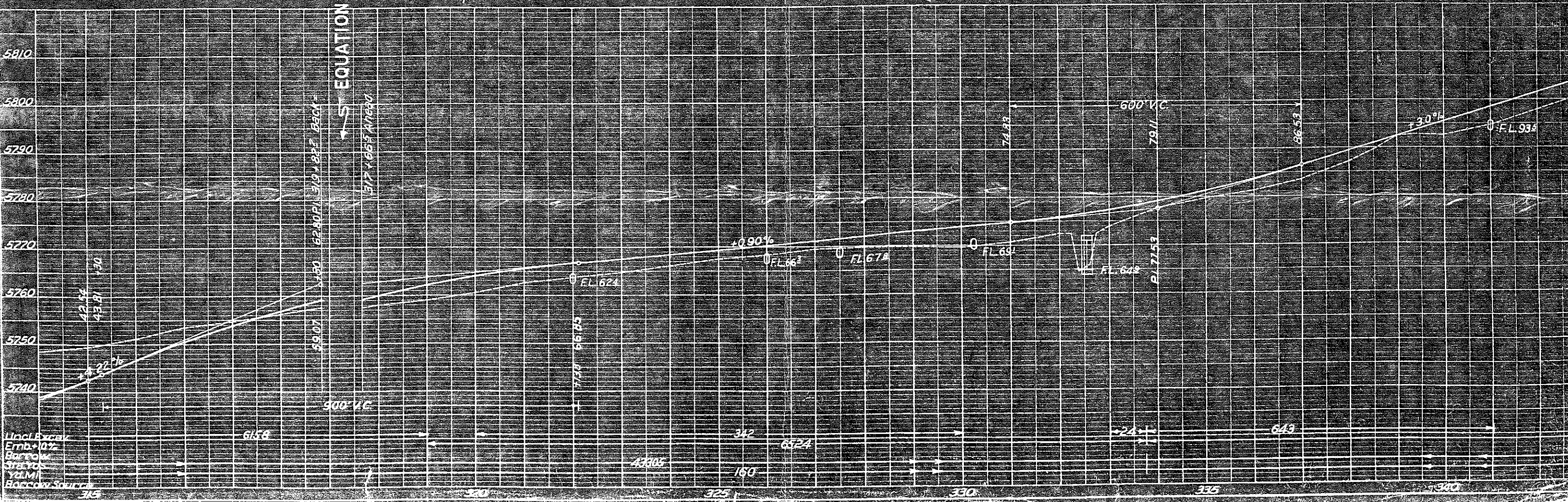


MATERIAL EXCAVATED IN THIS AREA TO BE USED IN CONSTRUCTION OF D.E.L.V. EMBANKMENT TO GRADE AS SHOWN ON SHEET NO. 32A

W 1/2 SEC. 6
T. 45. R. 65 W

S.E. 1/4 SEC. 1
T. 45. R. 20 W

FED. ROAD DIST. NO.	STATE	FWA PROJ. NO.	SHEET NO.
3	COLO.	81-A	26

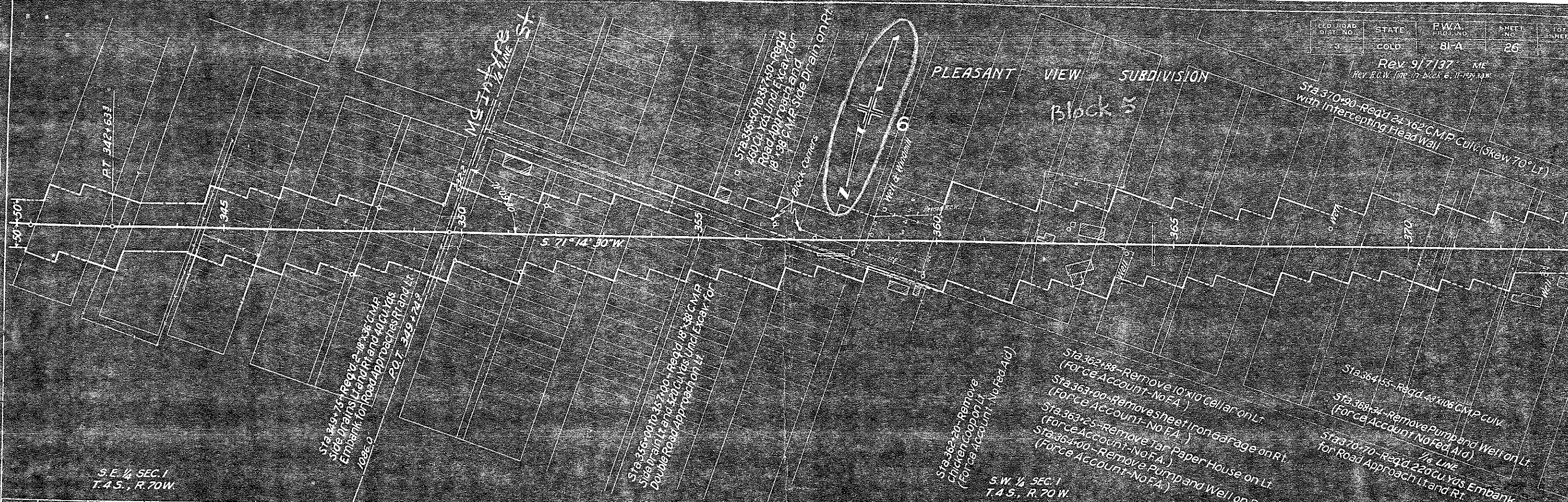


Uncl. Excav
Emb. 10%
Barrel
Struts
C.M.P.
Barrel Support

Δ	1° 38' L
D	0° 30'
T	163.4'
L	326.7'
R	114600'

Rev. 9/7/37 ME
Rev. R.C.W. Line in Block 6, II-1921-1922

PLEASANT VIEW SUBDIVISION
Block 55



Sta. 249+13 - Reg'd. 2'-10\"/>

Sta. 356+00 to 357+00 - Reg'd. 18\"/>

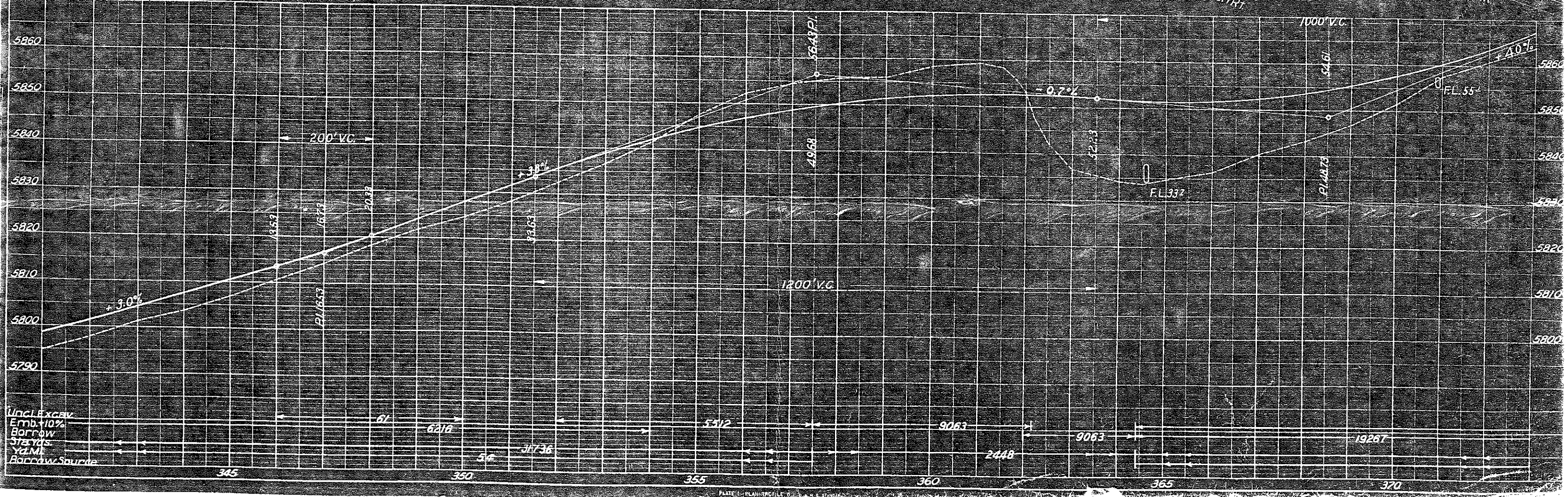
Sta. 362+20 - Remove children's playground (For C&A Account - No Fed. Aid)

Sta. 362+88 - Remove 10' x 10' cellar on Lt. (For C&A Account - No F.A.)
 Sta. 363+00 - Remove sheet iron garage on Rt. (For C&A Account - No F.A.)
 Sta. 363+25 - Remove tar paper house on Lt. (For C&A Account - No F.A.)
 Sta. 364+00 - Remove pump and well on Rt. (For C&A Account - No F.A.)

Sta. 364+55 - Reg'd. 48' x 106' CMP culv. (For C&A Account - No Fed. Aid)
 Sta. 368+74 - Remove pump and well on Lt. (For C&A Account - No Fed. Aid)
 Sta. 370+70 - Reg'd. 7/8\"/>

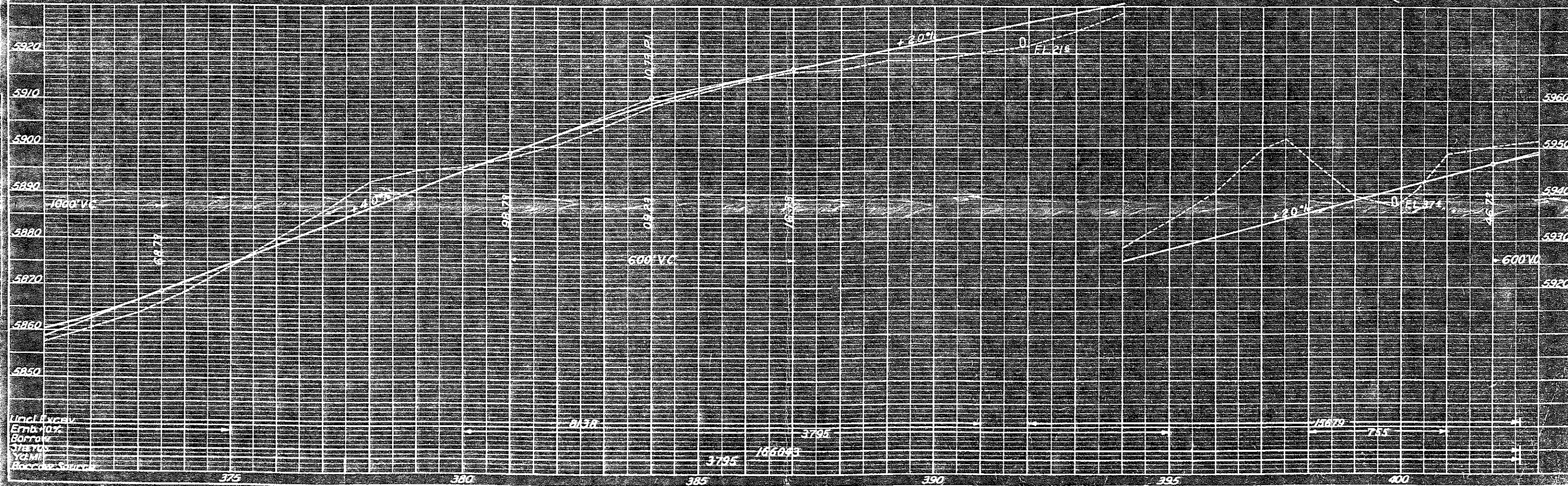
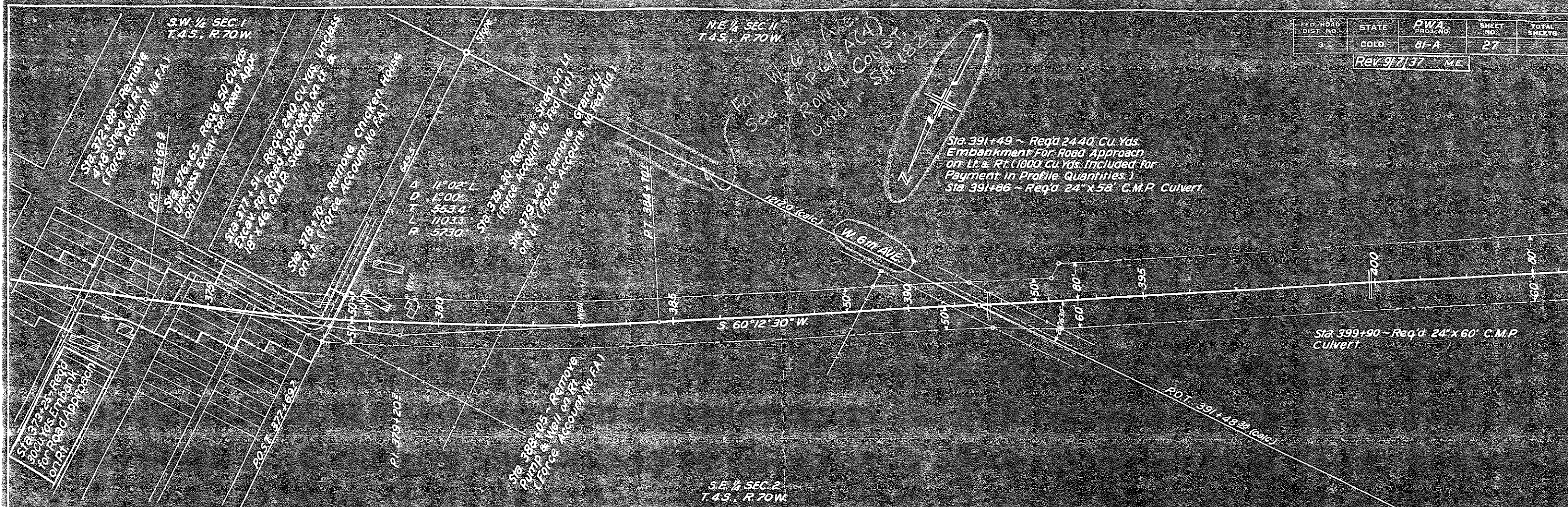
S. E. 1/4 SEC. 1
T. 4 S., R. 70 W.

S. W. 1/4 SEC. 1
T. 4 S., R. 70 W.



Uncle Excav.
Emb. +10%
Borrow
375 yds.
Y&M
Borrow Source

FED. ROAD DIST. NO.	STATE	DWA PROJ. NO.	SHEET NO.	TOTAL SHEETS
3	COLO.	81-A	27	
Rev. 9/7/37 ME				



Uncl. Excess Embankment on Right Side of Road

N.E. 1/4 SEC. 11
T.4S., R.70W.

N.W. 1/4 SEC. 11
T.4S., R.70W.

FED. ROAD DIST. NO.	STATE	P.W.A. PROJ. NO.	SHEET NO.	TOTAL SHEETS
3	COLO.	81-A	28	

Rev. 9/7/97 ME

Sta. 412+00 ~ Req'd 36"x102" C.M.P. Culvert (Skew 45° Lt.) & 5 Cu. Yds. Uncl. Excav. for Ditches

Sta. 419+05 ~ Req'd 10 Cu. Yds. Embankment for Road Approach on Lt. & 18"x28" C.M.P. Side Drain

Sta. 408+60 ~ Req'd 24"x84" C.M.P. Culvert

Sta. 412+71 ~ Remove Sign on Rt.

Sta. 420+14 ~ Req'd 10 Cu. Yds. Embankment for Road Approach on Rt.

Sta. 421+70 ~ Req'd 10 Cu. Yds. Embankment for Road Approach on Rt.

Sta. 423+16 ~ Remove 15" C.M.P. Side Drain, Req'd 18"x36" C.M.P. Side Drain Skewed 60° Lt., and 10 Cu. Yds. Uncl. Excav. for Road Approach on Lt.

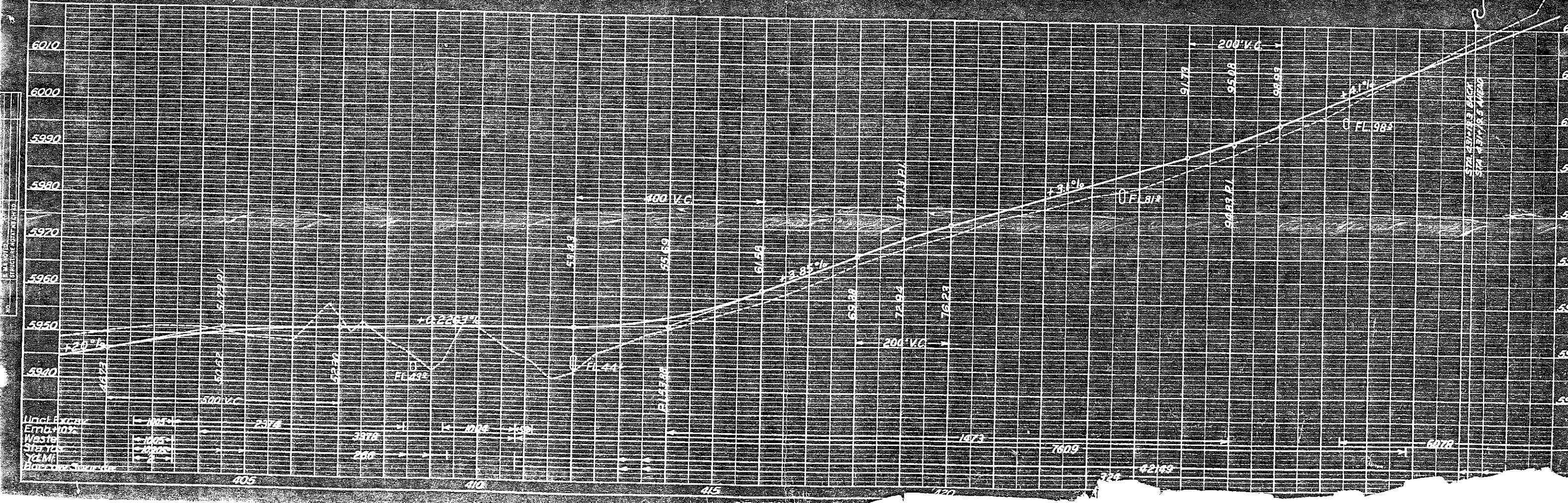
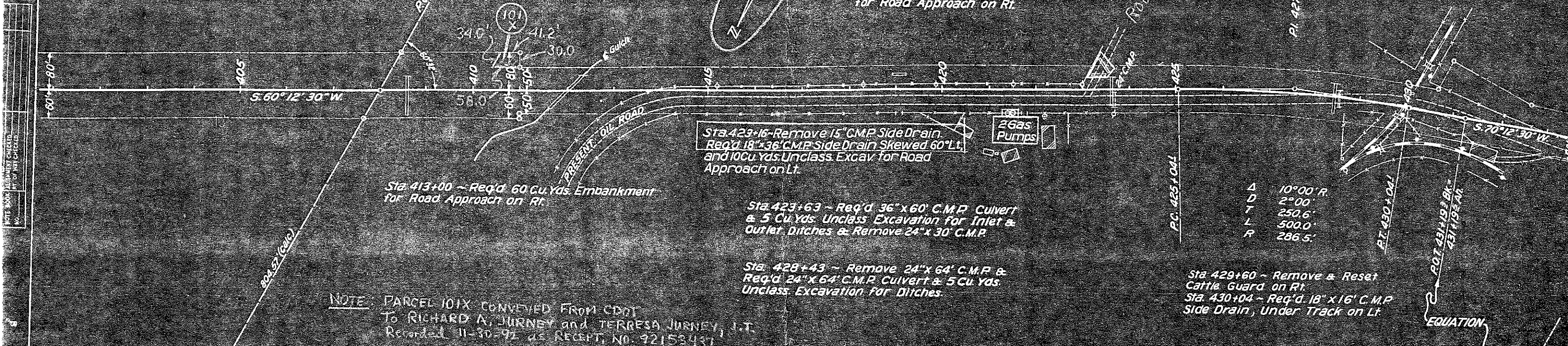
Sta. 423+63 ~ Req'd 36"x60" C.M.P. Culvert & 5 Cu. Yds. Uncl. Excavation for Inlet & Outlet Ditches & Remove 24"x30" C.M.P.

Sta. 428+43 ~ Remove 24"x64" C.M.P. & Req'd 24"x64" C.M.P. Culvert & 5 Cu. Yds. Uncl. Excavation for Ditches.

Δ	10°00' R.
D	2°00'
T	250.6'
L	500.0'
R	286.5'

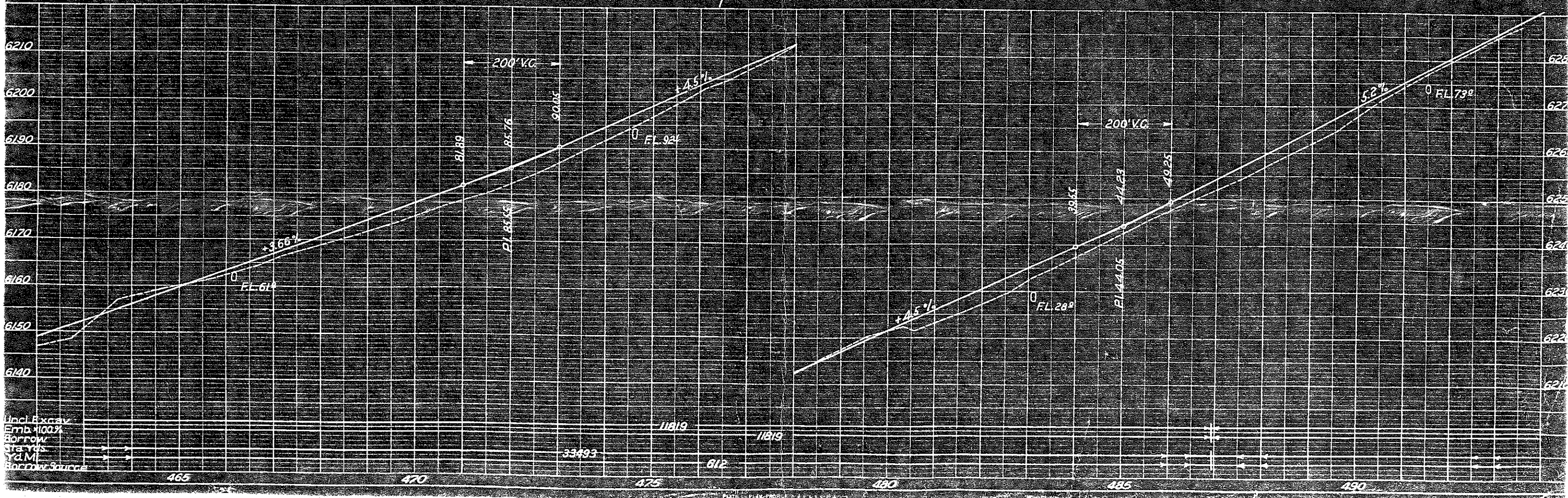
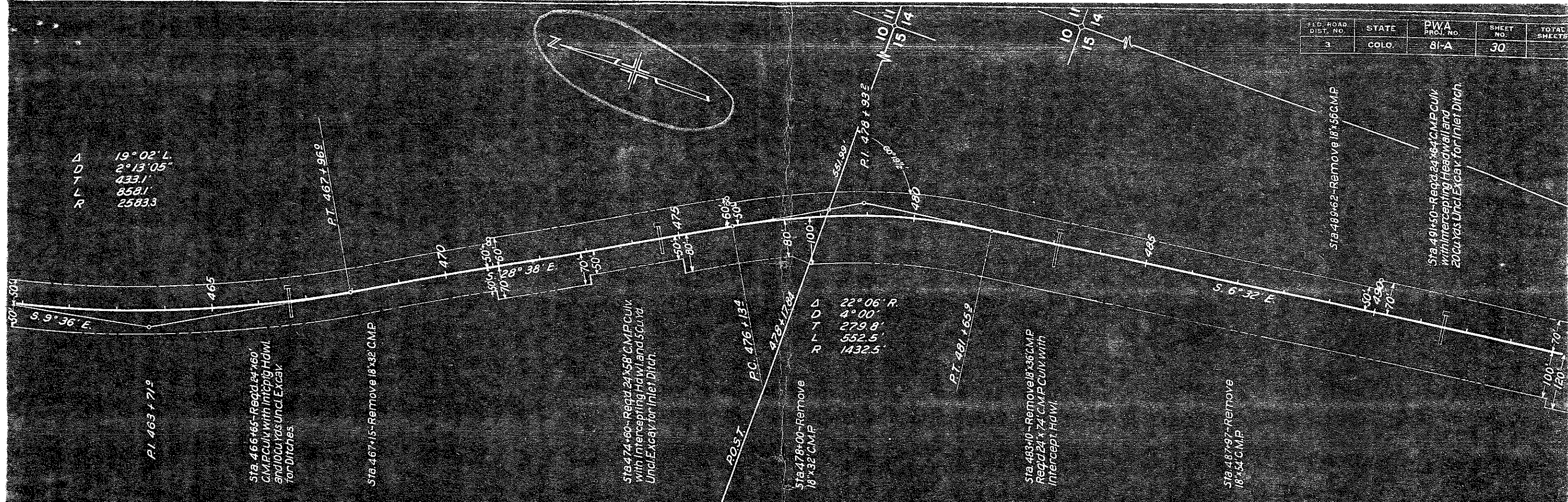
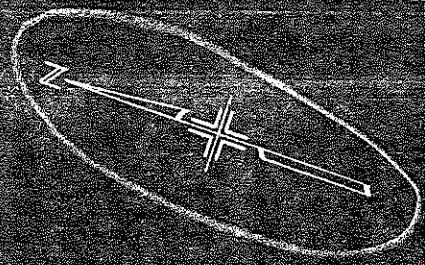
Sta. 429+60 ~ Remove & Reset Cattle Guard on Rt.
Sta. 430+04 ~ Req'd 18"x16" C.M.P. Side Drain, Under Track on Lt.

NOTE: PARCEL 101X CONVEYED FROM CDOT TO RICHARD A. JURNERY and TERRESA JURNERY, J.T. Recorded 11-30-92 as RECEIPT, No. 92153431



Uncl. Excav.	100%
Embankm.	100%
Waste	100%
Structure	100%
C.M.P.	100%
Other	100%

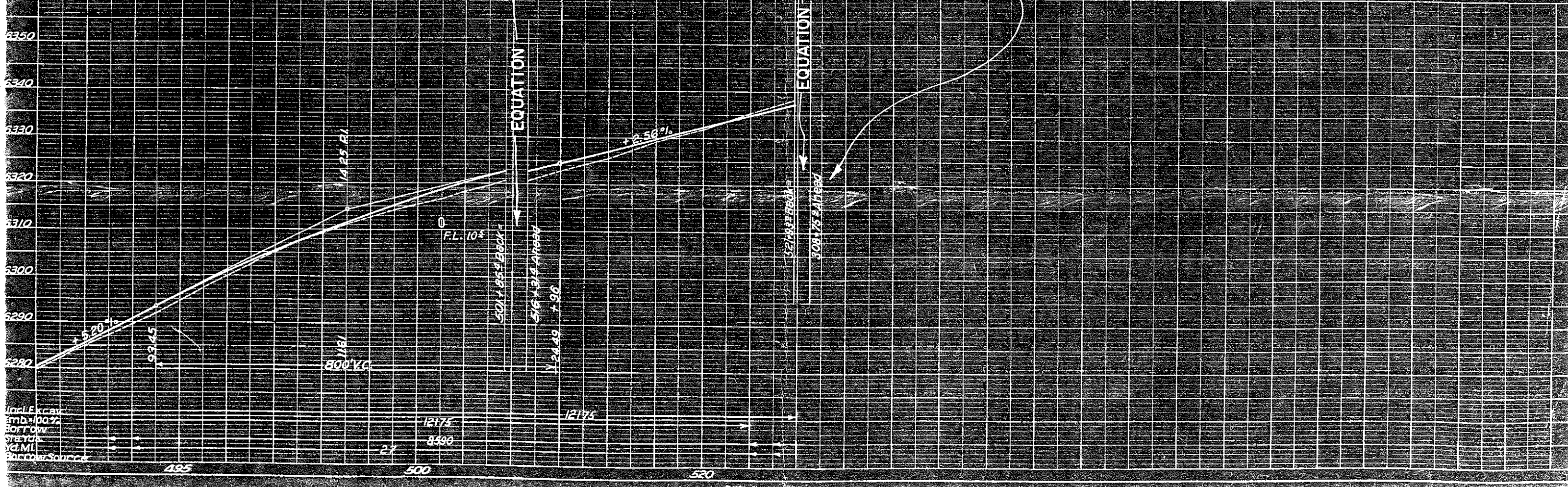
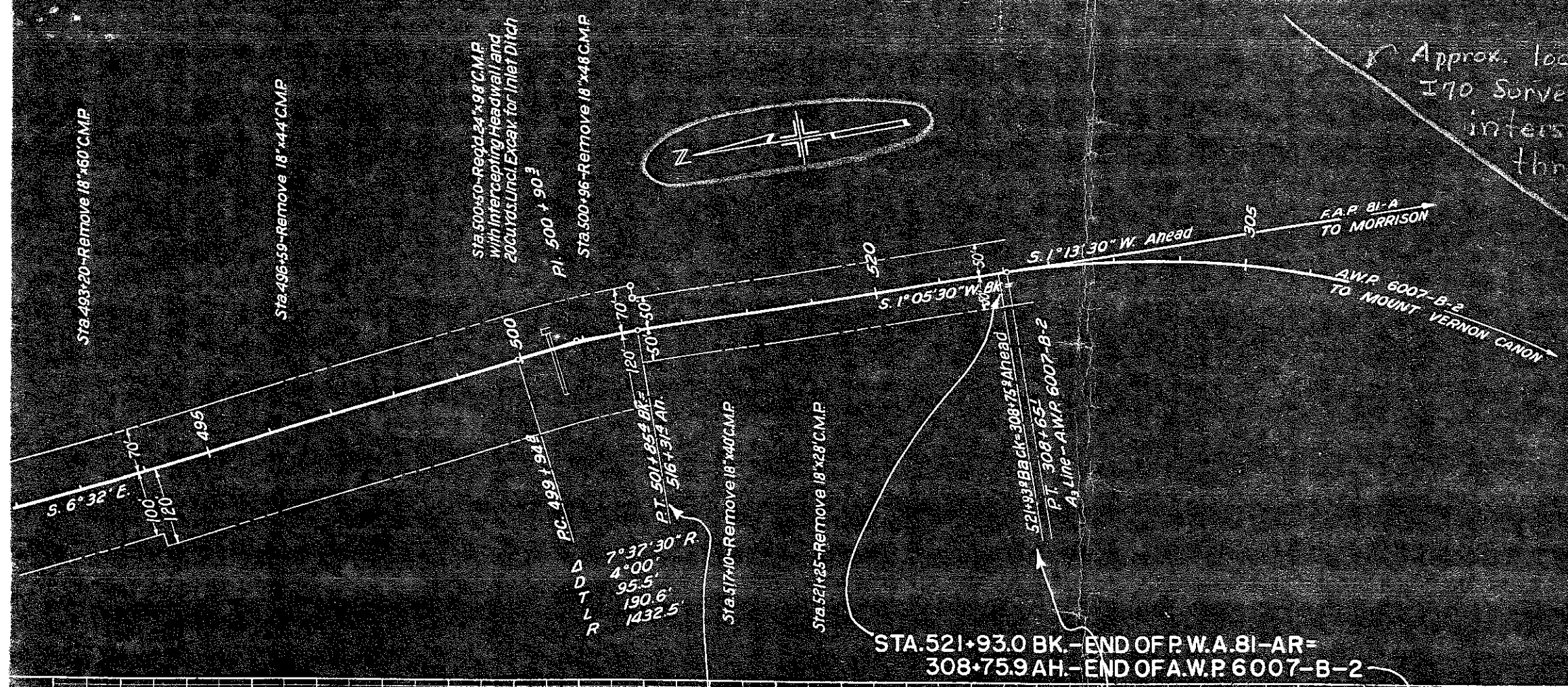
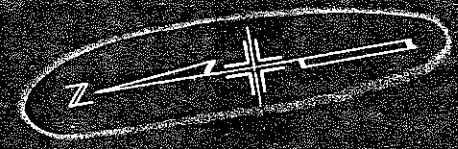
FED. ROAD DIST. NO.	STATE	PWA PROJ. NO.	SHEET NO.	TOTAL SHEETS
3	COLO.	81-A	30	



Uncl. Excav
Emb. 100%
Borrow
Sta. Yds
Std. M.
Proposed Source

FED. ROAD DIST. NO.	STATE	P.W.A. PROJ. NO.	SHEET NO.	TOTAL SHEETS
3	COLO.	81-A	31	

Approx. location of I70 Survey Line approaching intersection from cut through "Hogback"



Incl. Excav
Emb. 100%
Borrow
Gravel
1.0 MI.
Borrow Source