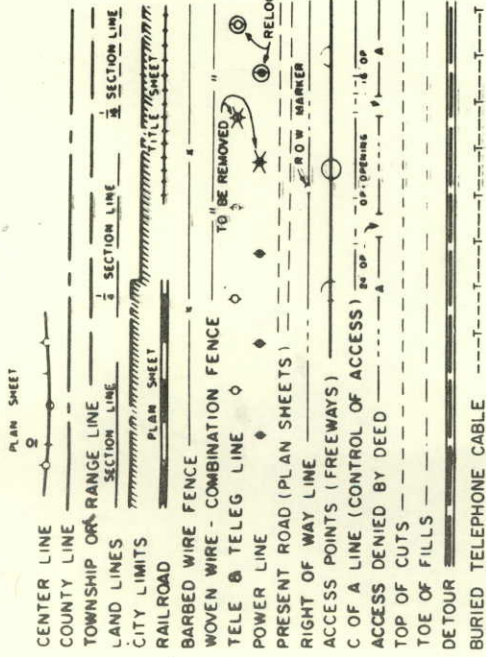


# STATE DEPARTMENT OF HIGHWAYS DIVISION OF HIGHWAYS - STATE OF COLORADO

FEDERAL ROAD REGION NO.	DIVISION	PROJECT NO.	SHEET NO.
9	COLORADO	RF 287-3(6)	1

RIGHT OF WAY  
OWL - CANYON - NORTH

## CONVENTIONAL SIGNS



PLAN AND PROFILE OF PROPOSED  
**FEDERAL AID PROJECT NO. RF 287-3(6)**  
**STATE HIGHWAY NO. 287**  
**LARIMER COUNTY**  
**RIGHT OF WAY**

INDEX OF SHEETS

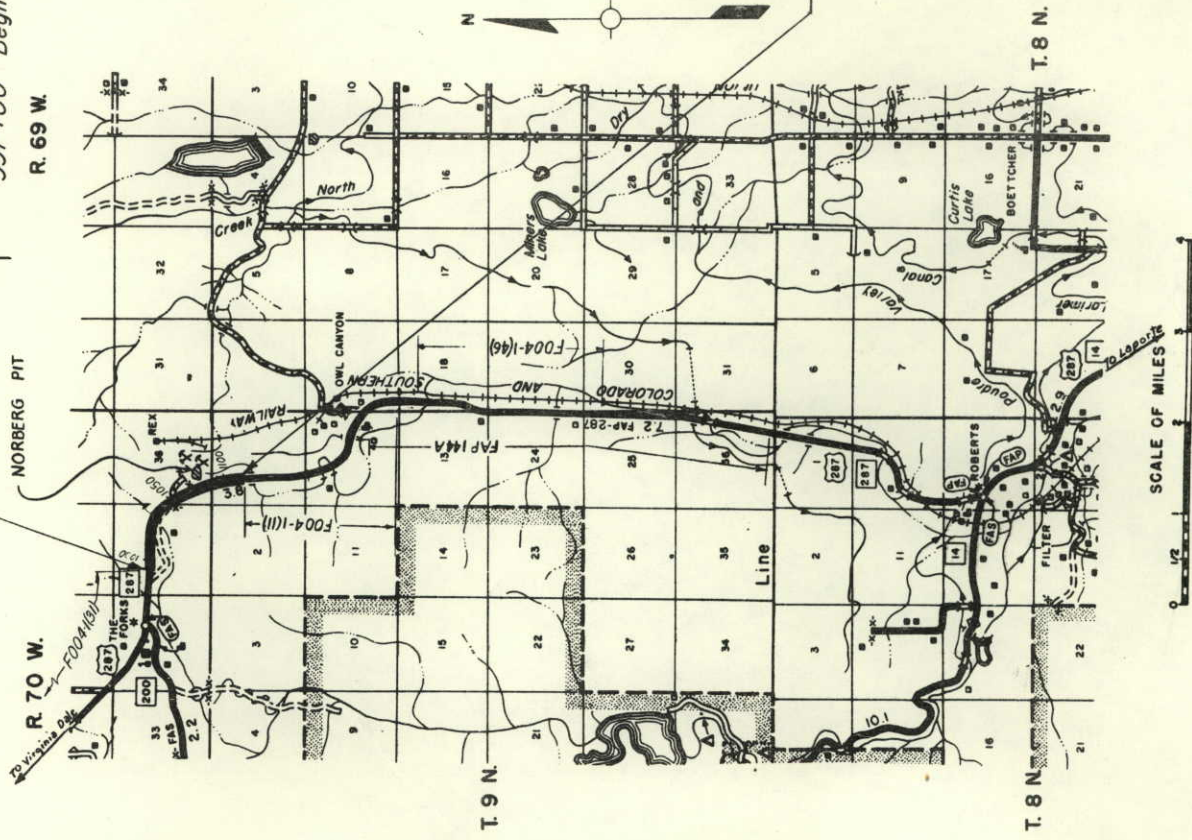
1	TITLE SHEET
2	TABLATION OF PROPERTIES
3-6	PLAN SHEETS
7	OWNERSHIP MAP

REVISIONS

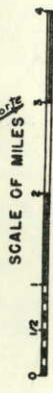

### SCALES OF ORIGINAL DRAWINGS

ON PLAN, 1 IN = 100 FT.  
 ON PROFILE, 1 IN = 100 FT. HORIZONTAL  
 1 IN = 10 FT. VERTICAL  
 LENGTH OF R.O.W. = 2.090 MILES

**STA. 995+00 BEGIN RF 287-3(6)**  
**997+00 Begin R.O.W. RF 287-3(6)**



**STA. 1111+00 END RF 287-3(6)**  
**STA. 1107+26.4 - End R.O.W. RF 287-3(6)**  
 Begin R.O.W. RF 287-3(4)







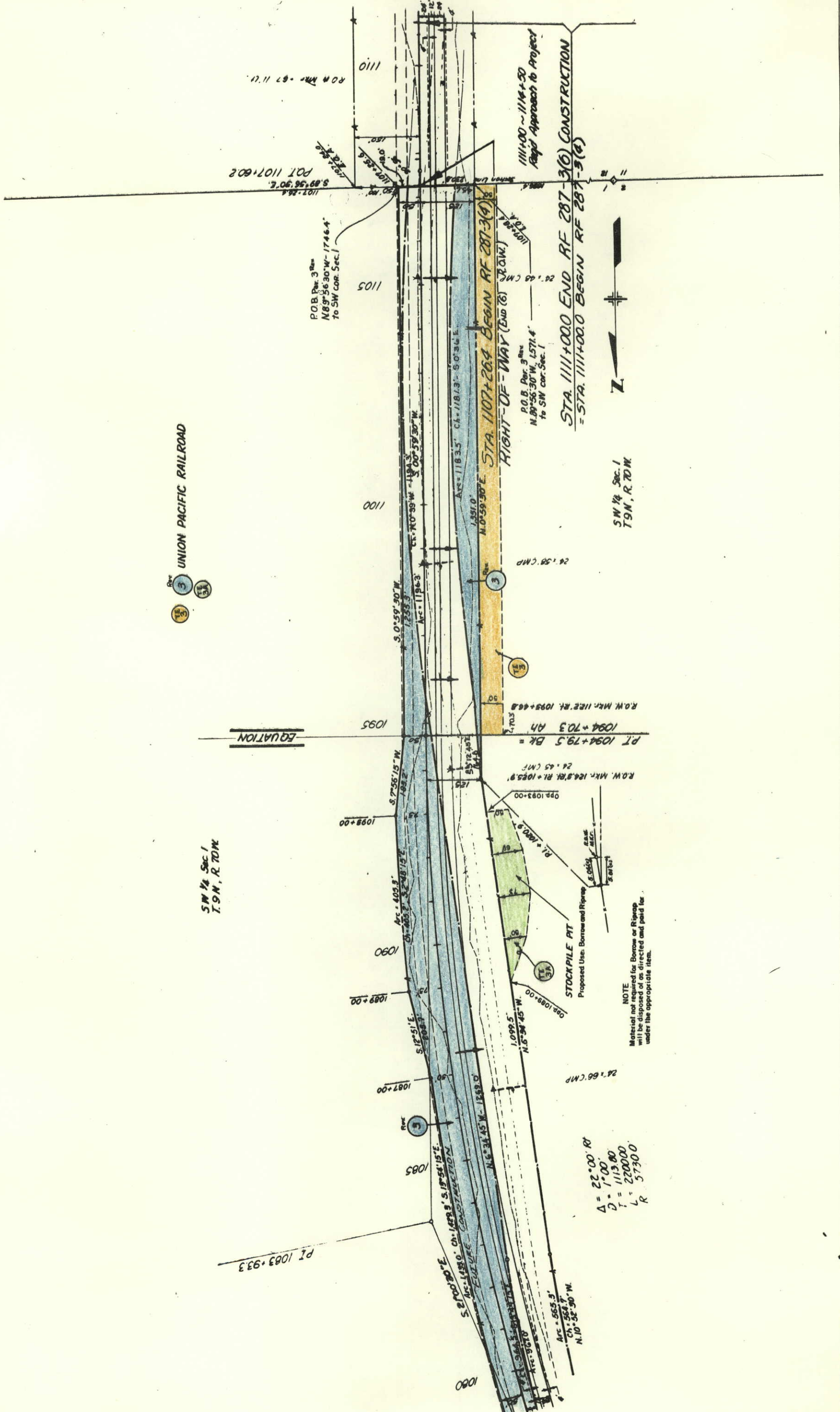




REVISIONS		G.M.	
5-6-70	A 08 TE-3, TE-3A, Rev. Per. 3		

FEDERAL ROAD REGION NO.	DISTRICT	PROJ. NO.	SHEET NO.	TOTAL SHEETS
9	COLORADO	RF 287-3 (6)	6	

**RIGHT OF WAY**  
**OWL CANYON-NORTH**



UNION PACIFIC RAILROAD

SW 1/4 Sec. 1  
T. 9N., R. 70W.



SW 1/4 Sec. 1  
T. 9N., R. 70W.

$\Delta = 22.00'$  Rt  
 $D = 1.00'$   
 $T = 113.80'$   
 $L = 22000'$   
 $R$

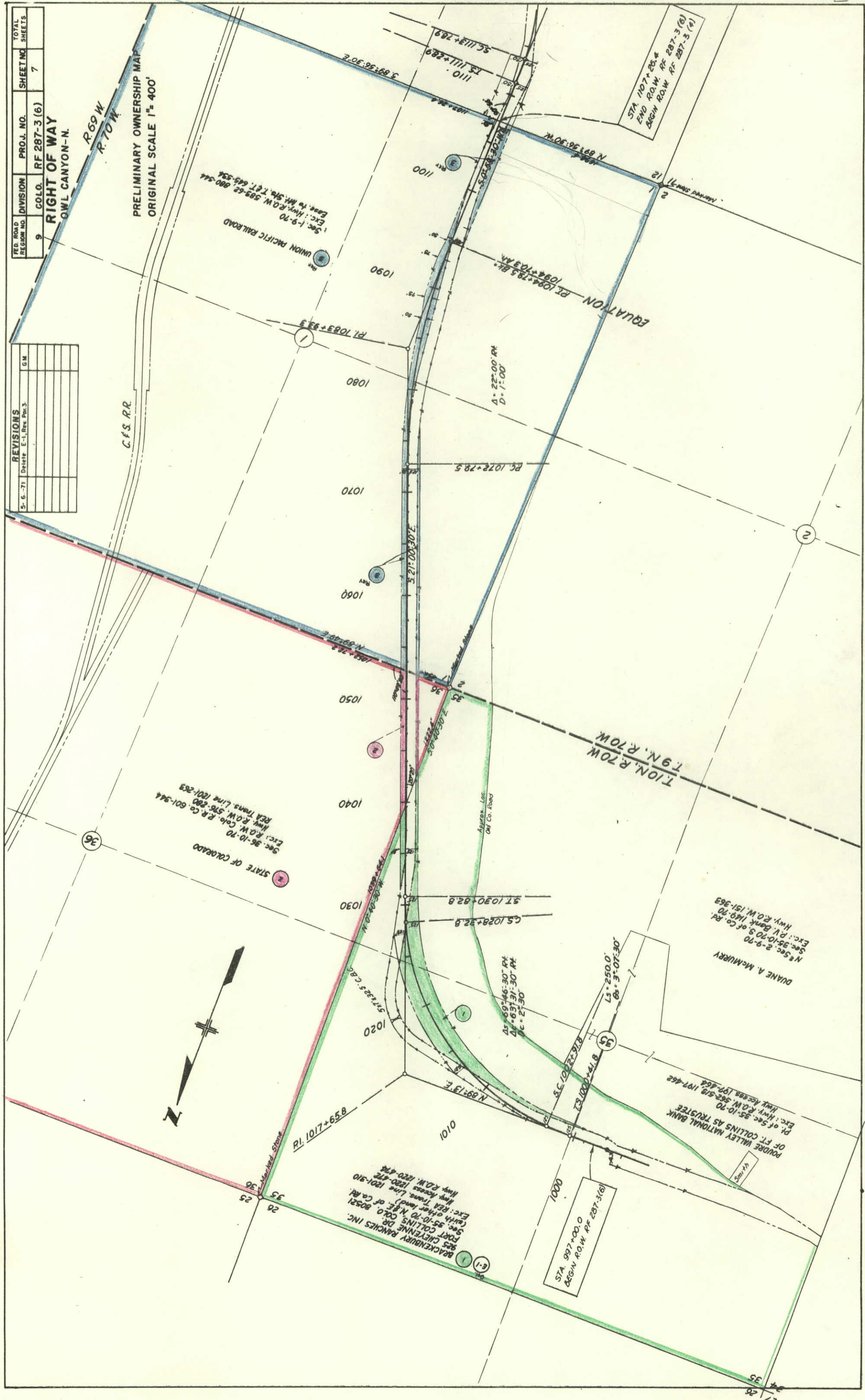
NOTE  
 Material not returned for Borrow or Riprap  
 will be disposed of as directed and paid for  
 under the appropriate item.

FED. ROAD REGION NO.	DIVISION	PROJ. NO.	SHEET NO.	TOTAL SHEETS
9	COLO.	RF 287-3(6)	7	7

**RIGHT OF WAY**  
OWL CANYON-N.

PRELIMINARY OWNERSHIP MAP  
ORIGINAL SCALE 1" = 400'

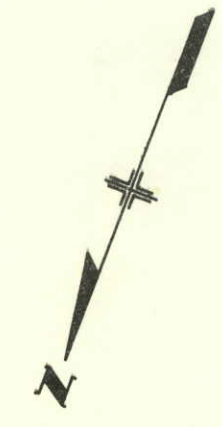
REVISIONS	GM
5-6-71 Delete E-1, Rev. P. 3	



36

2

27  
26  
25  
24  
23



STATE OF COLORADO  
Sec. 35-10-70  
Exc. Hwy. R.O.W. 516-280  
R.R. Co. 601-344  
R.R. Trans. Line 1201-283

DUANE A. McMURRY  
N. Sec. 2-9-90  
Exc. P.V. Bank 119-70  
Hwy. R.O.W. 151-363

POUDRE VALLEY NATIONAL BANK  
OF FT. COLLINS AS TRUSTEE  
Pt. of Sec. 35-10-70  
Exc. Hwy. R.O.W. 582-519, 1197-462  
Hwy. Access 197-464

BACKENBURY RANCHES INC.  
255 CHEYENNE DR.  
FORT COLLINS CO. BOSENI  
Sec. 35-10-70 N.E. of Co. Rd.  
Exc. R.R. Trans. Line 1201-472  
Hwy. R.O.W. 1220-472

STA. 997+00.0  
BEG'N R.O.W. RF 287-3(6)

R.69 W  
R.70 W

T.9 N. R.70 W

M.O.E. 95+68 N

EQUATION  
P.L. 1084+79.5 B.L.  
1094+103.4

Δ=22°00' RT  
D=1°00'

P.C. 1072+79.5

3.02+00.30 E

5.21+00.30 E

1.82+79.5

N. 89+13 E

5.17+25.5 C.C.

1.02+00.0

5.17+25.5 C.C.

1.02+00.0

5.17+25.5 C.C.

1.02+00.0

1.02+00.0

1.02+00.0

1.02+00.0

1.02+00.0

1.02+00.0

1.02+00.0

1.02+00.0

1.02+00.0

1.02+00.0

1.02+00.0