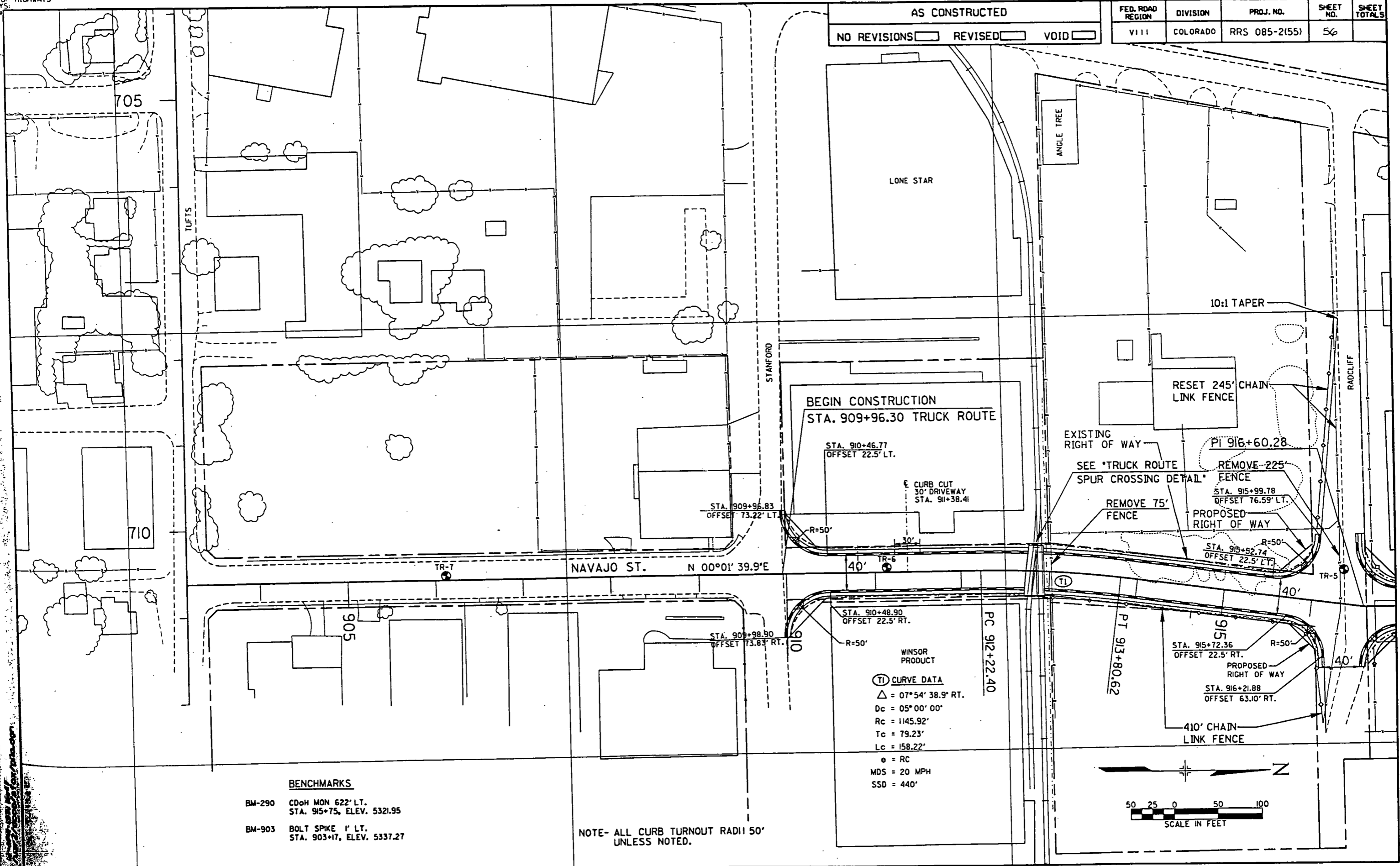




AS CONSTRUCTED  
NO REVISIONS  REVISED  VOID

FED. ROAD REGION	DIVISION	PROJ. NO.	SHEET NO.	SHEET TOTALS
VIII	COLORADO	RRS 085-2(55)	56	

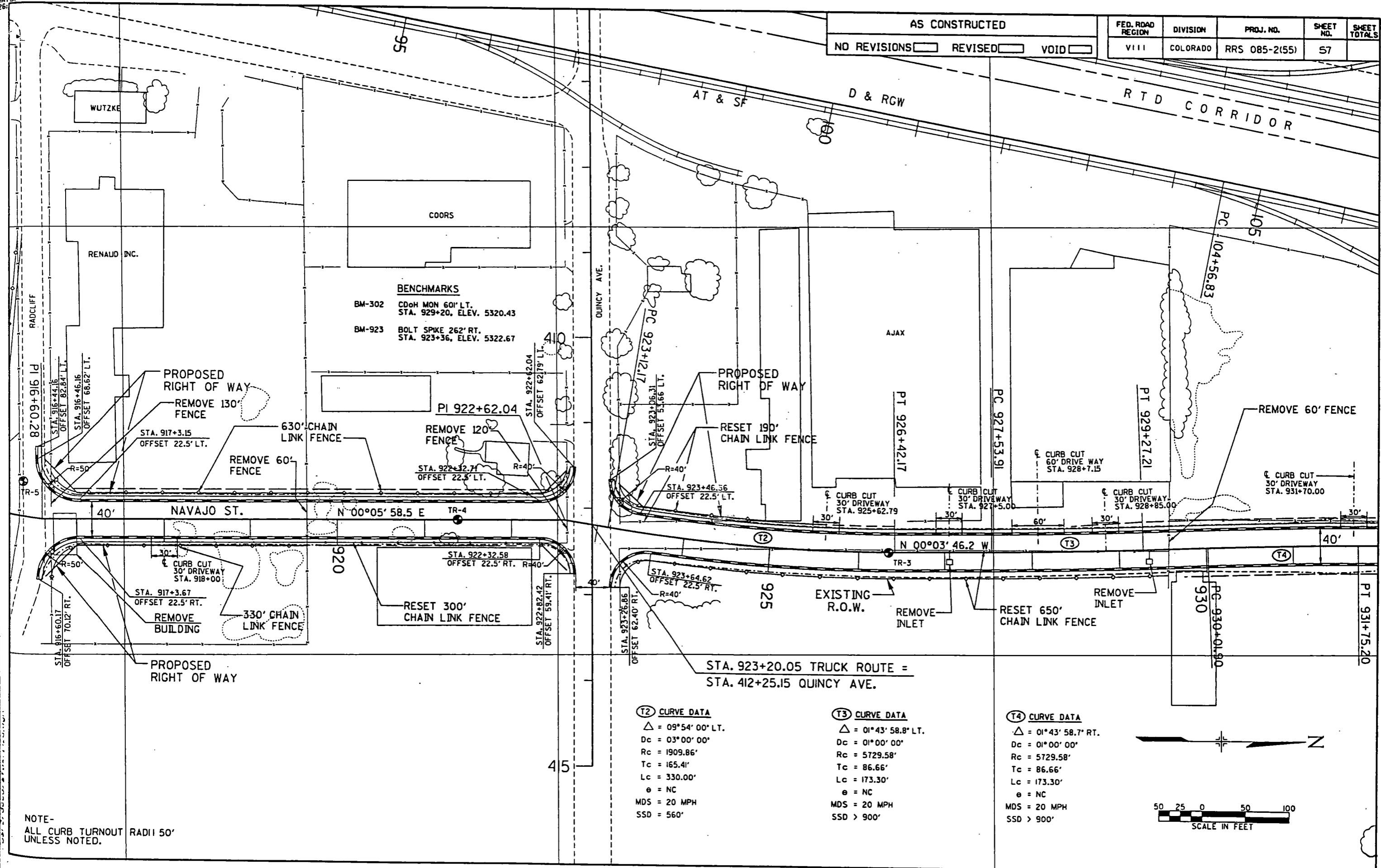


**BENCHMARKS**  
 BM-290 CDoH MON 622' LT.  
 STA. 915+75, ELEV. 5321.95  
 BM-903 BOLT SPIKE 1' LT.  
 STA. 903+17, ELEV. 5337.27

NOTE- ALL CURB TURNOUT RADII 50'  
UNLESS NOTED.

2000  
 126  
 126

AS CONSTRUCTED				
NO REVISIONS <input type="checkbox"/>	REVISED <input type="checkbox"/>	VOID <input type="checkbox"/>	FED. ROAD REGION	DIVISION
			VIII	COLORADO
			PROJ. NO.	SHEET NO.
			RRS 085-2(55)	57
				SHEET TOTALS

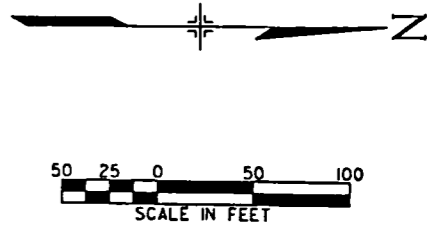


**BENCHMARKS**  
 BM-302 CDOH MON 60' LT.  
 STA. 929+20, ELEV. 5320.43  
 BM-923 BOLT SPIKE 262' RT.  
 STA. 923+36, ELEV. 5322.67

**(T2) CURVE DATA**  
 Δ = 09°54' 00" LT.  
 Dc = 03°00' 00"  
 Rc = 1909.86'  
 Tc = 165.41'  
 Lc = 330.00'  
 e = NC  
 MDS = 20 MPH  
 SSD = 560'

**(T3) CURVE DATA**  
 Δ = 01°43' 58.8" LT.  
 Dc = 01°00' 00"  
 Rc = 5729.58'  
 Tc = 86.66'  
 Lc = 173.30'  
 e = NC  
 MDS = 20 MPH  
 SSD > 900'

**(T4) CURVE DATA**  
 Δ = 01°43' 58.7" RT.  
 Dc = 01°00' 00"  
 Rc = 5729.58'  
 Tc = 86.66'  
 Lc = 173.30'  
 e = NC  
 MDS = 20 MPH  
 SSD > 900'

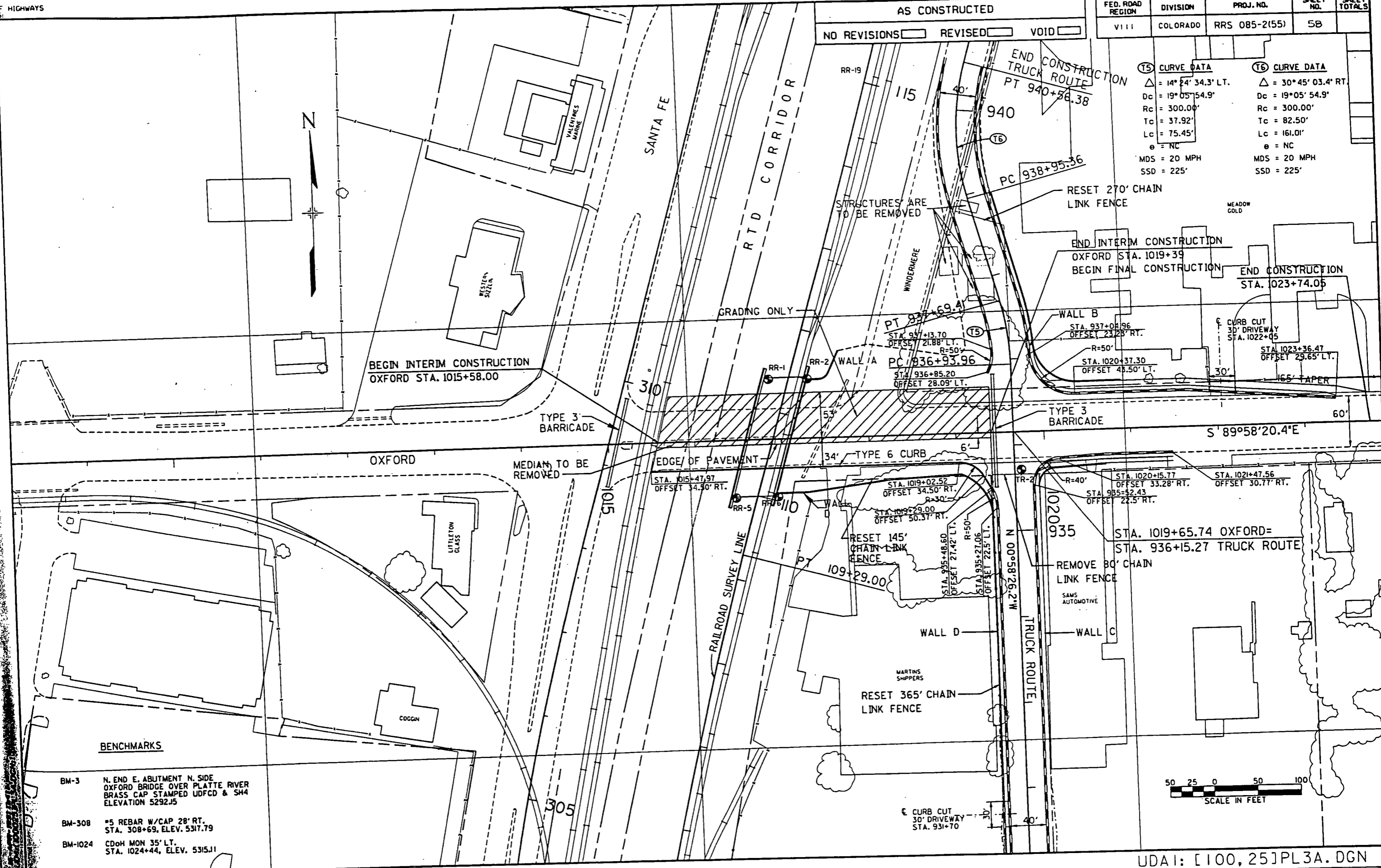


AS CONSTRUCTED

NO REVISIONS  REVISED  VOID

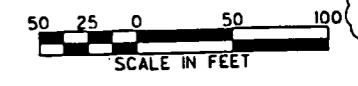
FED. ROAD REGION	DIVISION	PROJ. NO.	SHEET NO.	SHEET TOTALS
VIII	COLORADO	RRS 085-2(55)	5B	

(T5) CURVE DATA	(T6) CURVE DATA
$\Delta = 14^{\circ} 24' 34.3''$ LT.	$\Delta = 30^{\circ} 45' 03.4''$ RT.
$D_c = 19^{\circ} 05' 54.9''$	$D_c = 19^{\circ} 05' 54.9''$
$R_c = 300.00'$	$R_c = 300.00'$
$T_c = 37.92'$	$T_c = 82.50'$
$L_c = 75.45'$	$L_c = 161.01'$
$e = NC$	$e = NC$
MDS = 20 MPH	MDS = 20 MPH
SSD = 225'	SSD = 225'



**BENCHMARKS**

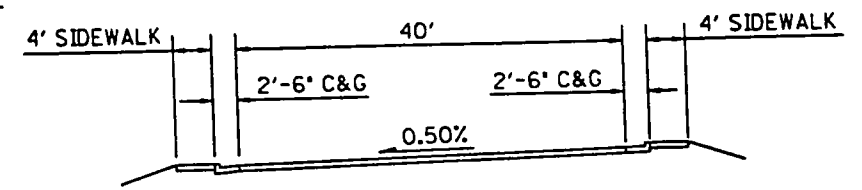
- BM-3 N. END E. ABUTMENT N. SIDE OXFORD BRIDGE OVER PLATTE RIVER BRASS CAP STAMPED UDFCD & SH4 ELEVATION 5292.15
- BM-308 #5 REBAR W/CAP 28' RT. STA. 308+69, ELEV. 5317.79
- BM-1024 CDOT MON 35' LT. STA. 1024+44, ELEV. 5315.11



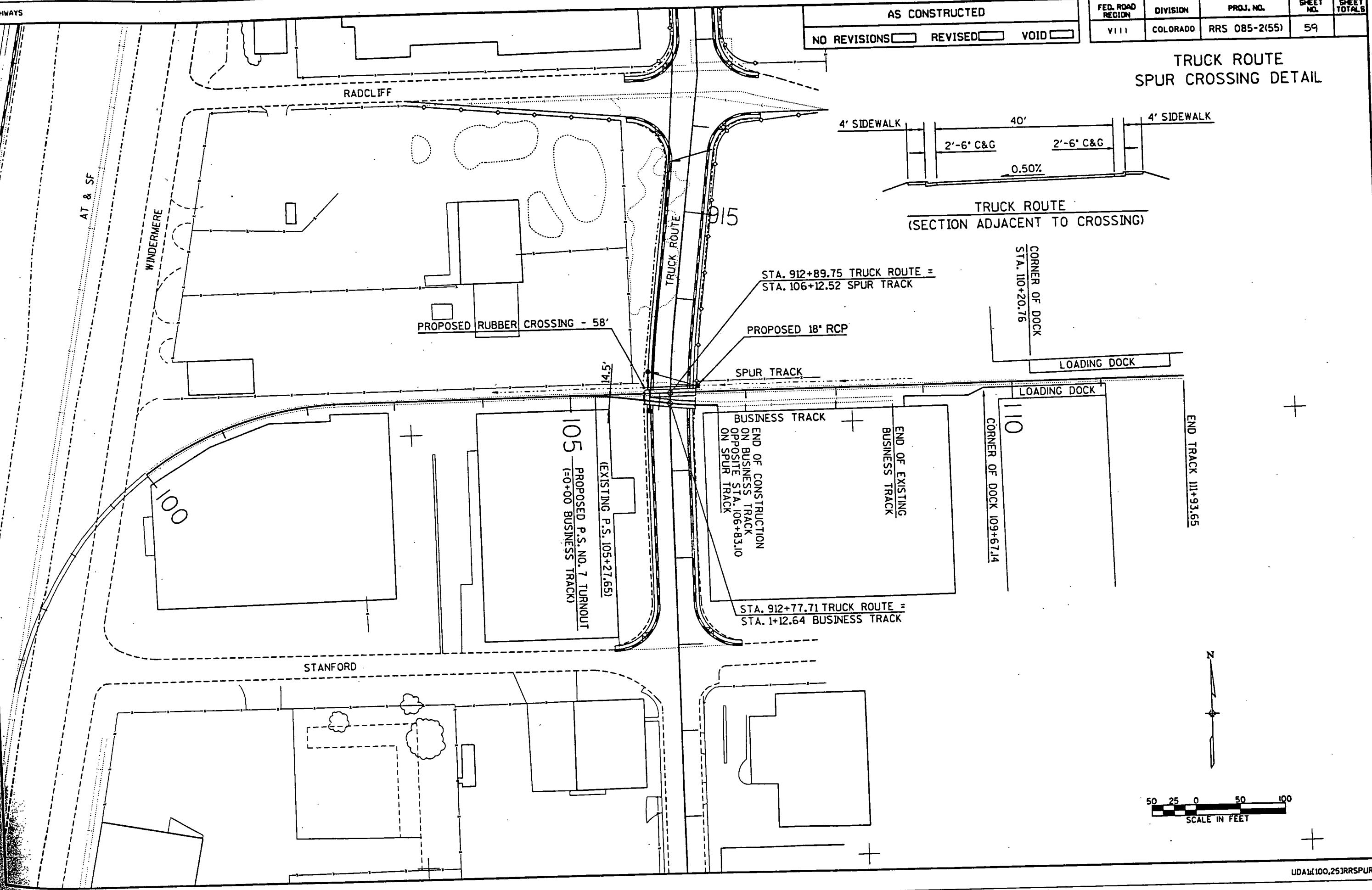
AS CONSTRUCTED		
NO REVISIONS <input type="checkbox"/>	REVISED <input type="checkbox"/>	VOID <input type="checkbox"/>

FED. ROAD REGION	DIVISION	PROJ. NO.	SHEET NO.	SHEET TOTALS
VIII	COLORADO	RRS 085-2(55)	59	

### TRUCK ROUTE SPUR CROSSING DETAIL



TRUCK ROUTE  
 (SECTION ADJACENT TO CROSSING)



STA. 912+89.75 TRUCK ROUTE =  
 STA. 106+12.52 SPUR TRACK

PROPOSED 18" RCP

SPUR TRACK

BUSINESS TRACK

END OF CONSTRUCTION  
 ON BUSINESS TRACK  
 OPPOSITE STA. 106+83.10  
 ON SPUR TRACK

STA. 912+77.71 TRUCK ROUTE =  
 STA. 1+12.64 BUSINESS TRACK

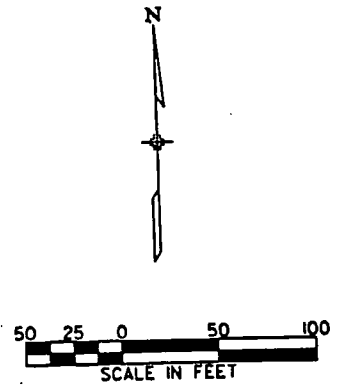
105  
 PROPOSED P.S. NO. 7 TURNOUT  
 (=0+00 BUSINESS TRACK)

(EXISTING P.S. 105+27.65)

CORNER OF DOCK  
 STA. 110+20.76

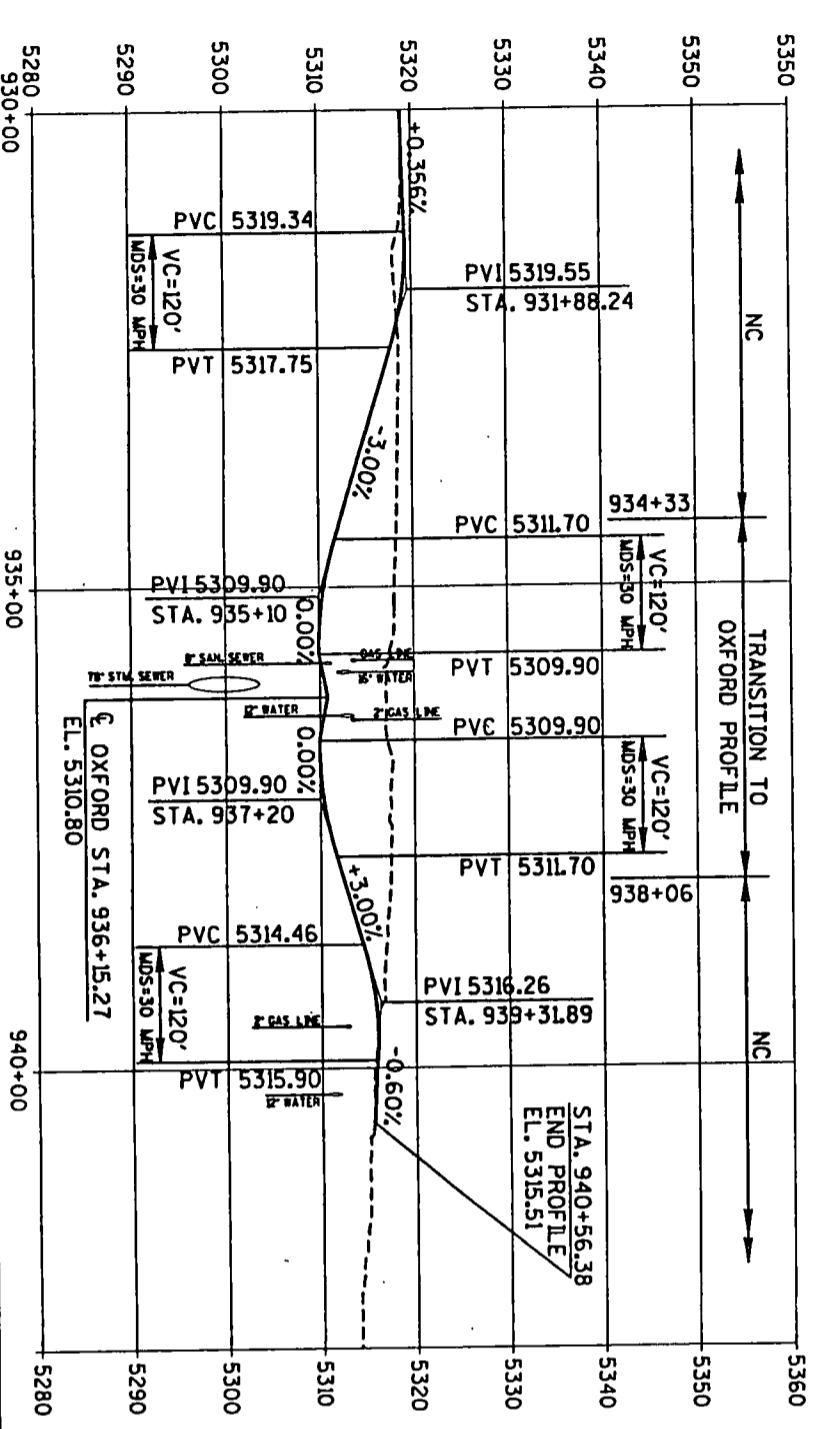
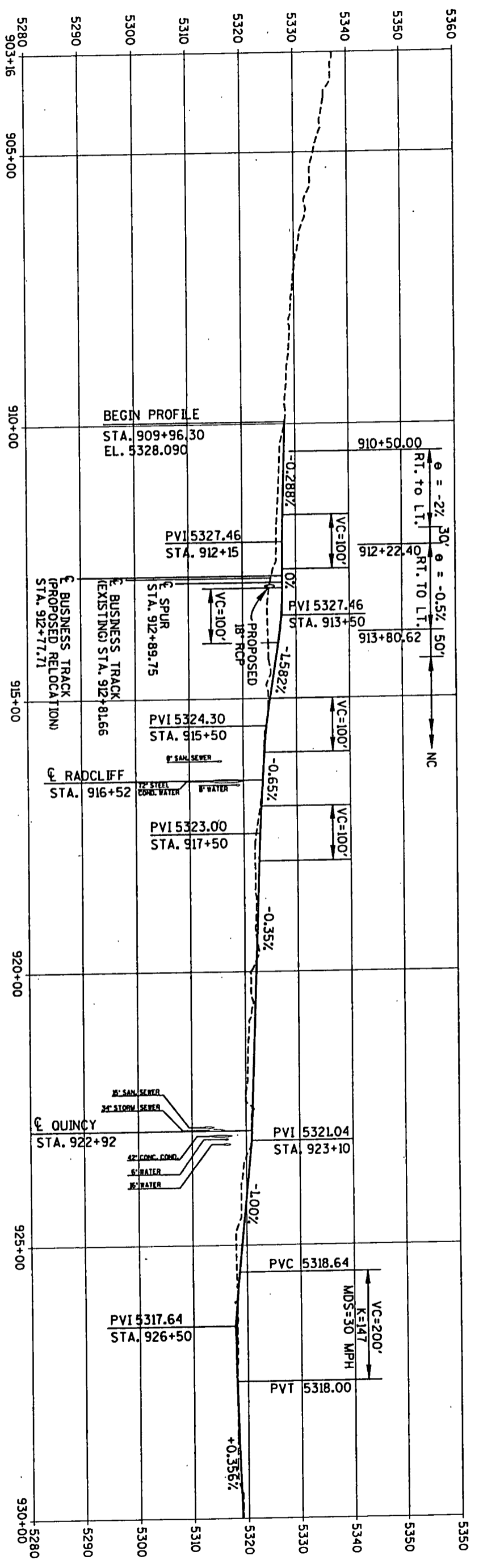
CORNER OF DOCK 109+67.14

END TRACK 111+93.65



TRUCK ROUTE PROFILE

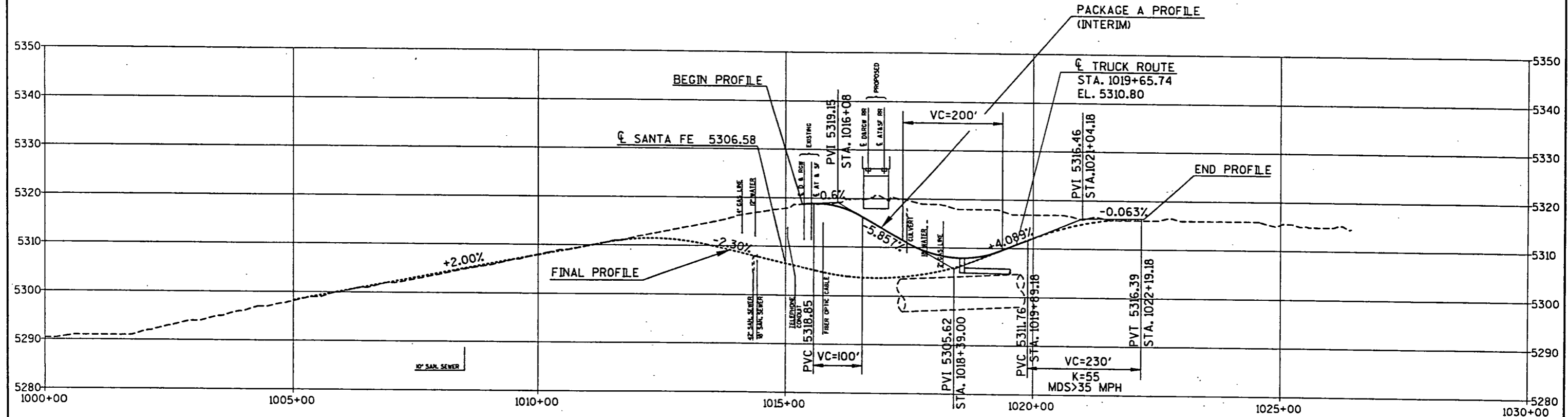
AS CONSTRUCTED		FED. ROAD REGION	DIVISION	PROJ. NO.	SHEET NO.
NO REVISIONS	REVISED	VIII	COLORADO	RRS 085-21551	104.5
					60



AS CONSTRUCTED		
NO REVISIONS <input type="checkbox"/>	REVISED <input type="checkbox"/>	VOID <input type="checkbox"/>

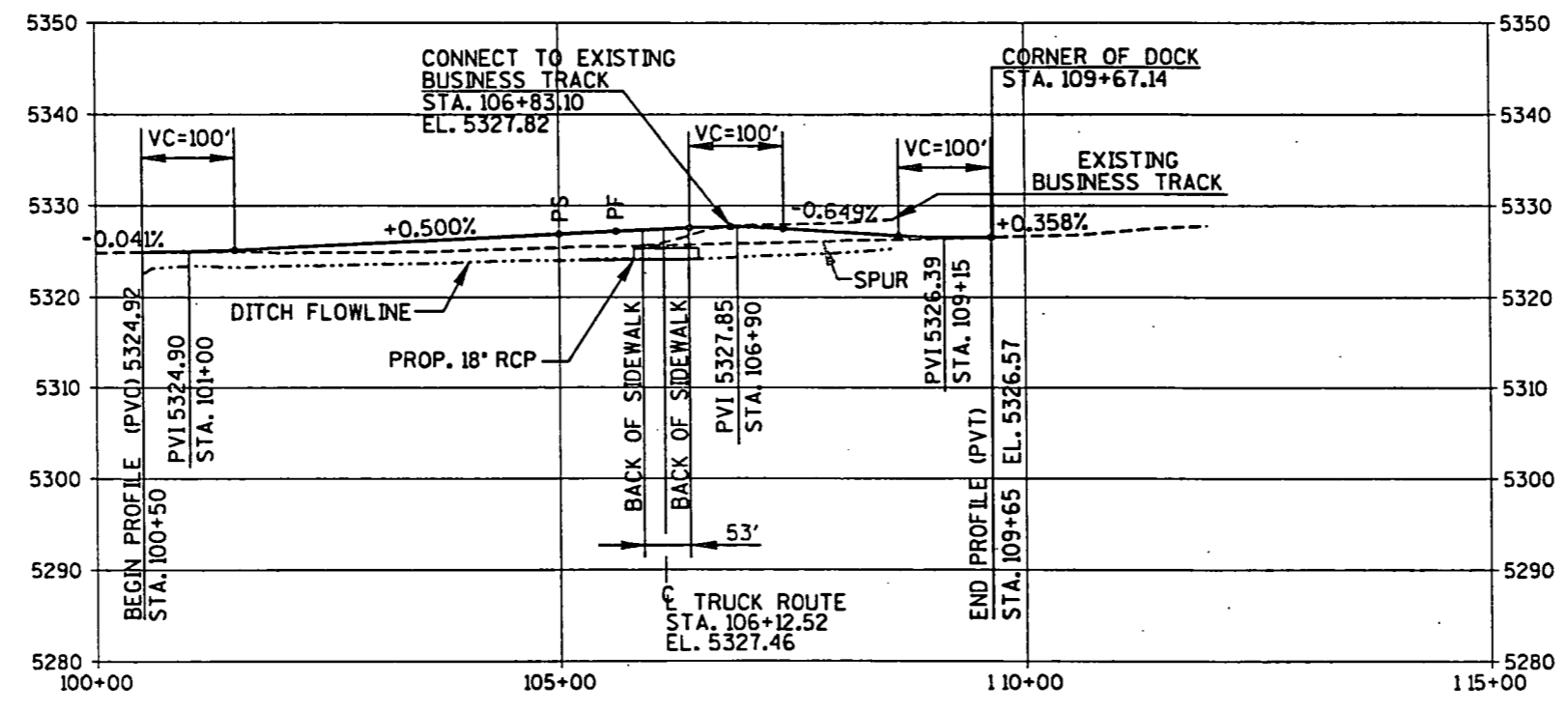
FED. ROAD REGION	DIVISION	PROJ. NO.	SHEET NO.	SHEET TOTALS
VIII	COLORADO	RRS 085-2(55)	61	

OXFORD PROFILE - PACKAGE A (INTERIM)



FED. ROAD REGION	DIVISION	PROJ. NO.	SHEET NO.	SHEET TOTALS
VIII	COLORADO	RRS 085-2(55)	62	

### RAILROAD SPUR PROFILES

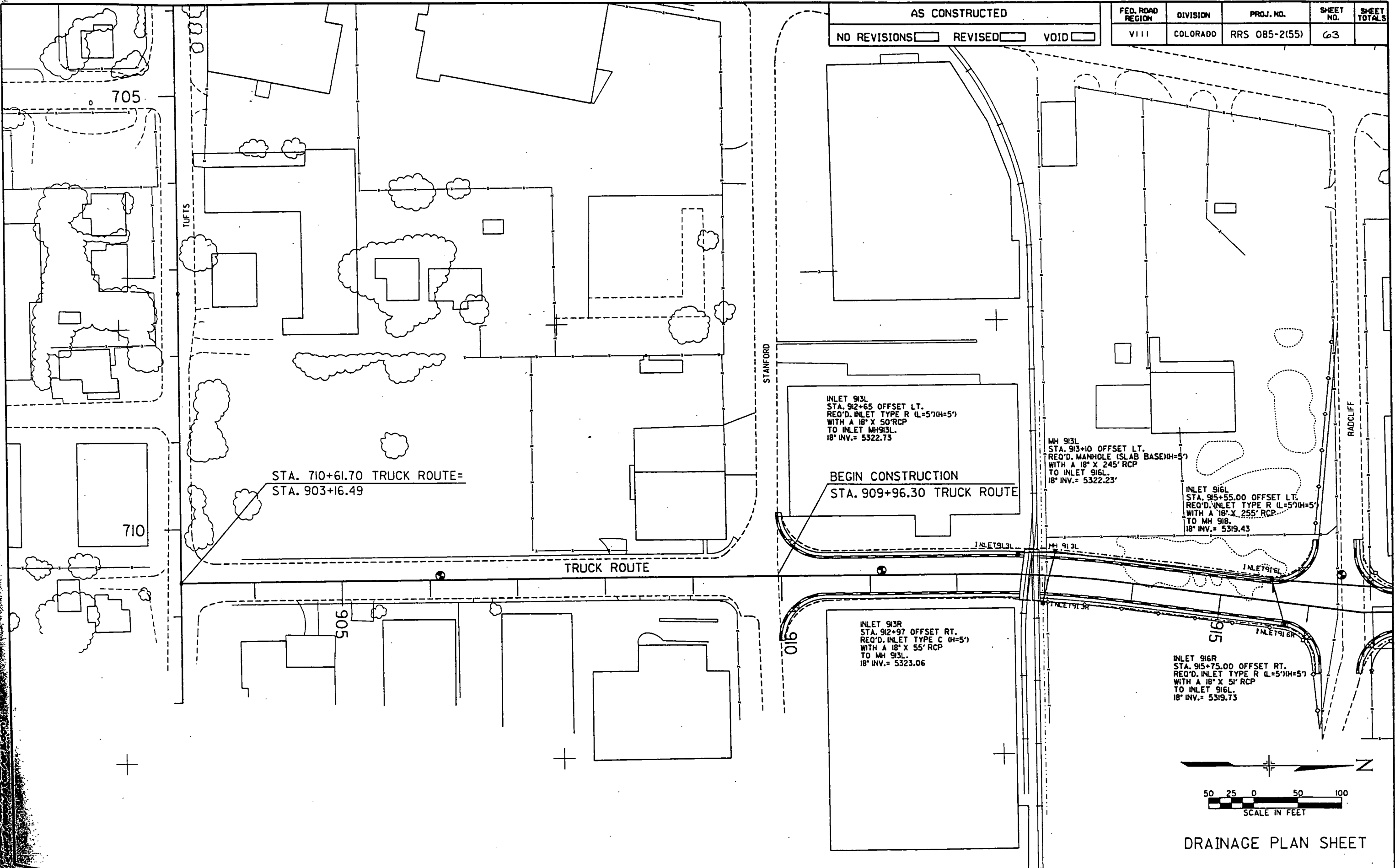


11-Apr-2011 15:05  
 /usr2/dccc/stbox/pr-50.3d

AS CONSTRUCTED

NO REVISIONS  REVISED  VOID

FED. ROAD REGION	DIVISION	PROJ. NO.	SHEET NO.	SHEET TOTALS
VIII	COLORADO	RRS 085-2(55)	63	



STA. 710+61.70 TRUCK ROUTE=  
STA. 903+16.49

TRUCK ROUTE

INLET 913L  
STA. 912+65 OFFSET LT.  
REQ'D. INLET TYPE R (L=5')(H=5')  
WITH A 18" X 50' RCP  
TO INLET MH913L.  
18" INV. = 5322.73

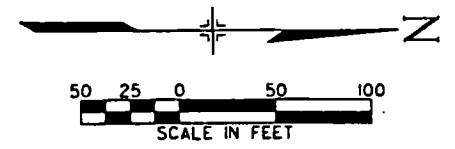
BEGIN CONSTRUCTION  
STA. 909+96.30 TRUCK ROUTE

MH 913L  
STA. 913+10 OFFSET LT.  
REQ'D. MANHOLE (SLAB BASE)(H=5')  
WITH A 18" X 245' RCP  
TO INLET 916L.  
18" INV. = 5322.23'

INLET 916L  
STA. 915+55.00 OFFSET LT.  
REQ'D. INLET TYPE R (L=5')(H=5')  
WITH A 18" X 255' RCP.  
TO MH 918.  
18" INV. = 5319.43

INLET 913R  
STA. 912+97 OFFSET RT.  
REQ'D. INLET TYPE C (H=5')  
WITH A 18" X 55' RCP  
TO MH 913L.  
18" INV. = 5323.06

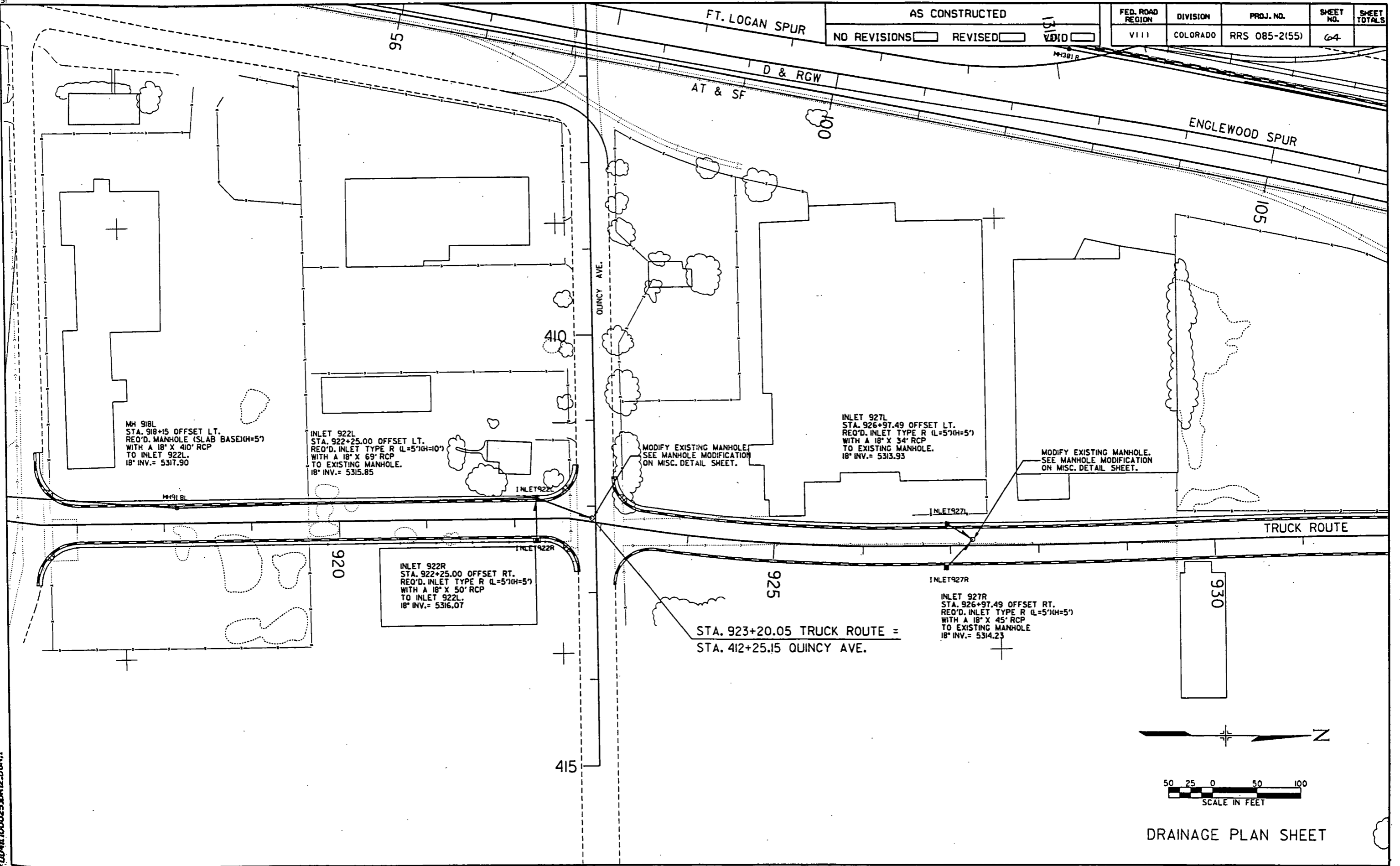
INLET 916R  
STA. 915+75.00 OFFSET RT.  
REQ'D. INLET TYPE R (L=5')(H=5')  
WITH A 18" X 51' RCP  
TO INLET 916L.  
18" INV. = 5319.73



DRAINAGE PLAN SHEET

AS CONSTRUCTED	
NO REVISIONS <input type="checkbox"/>	REVISED <input type="checkbox"/>
VOID <input checked="" type="checkbox"/>	

FED. ROAD REGION	DIVISION	PROJ. NO.	SHEET NO.	SHEET TOTALS
VIII	COLORADO	RRS 085-2(55)	64	



MH 918L  
 STA. 918+15 OFFSET LT.  
 REQ'D. MANHOLE (SLAB BASE)(H=5')  
 WITH A 18" X 410" RCP  
 TO INLET 922L.  
 18" INV.= 5317.90

INLET 922L  
 STA. 922+25.00 OFFSET LT.  
 REQ'D. INLET TYPE R (L=5')(H=10')  
 WITH A 18" X 69" RCP  
 TO EXISTING MANHOLE.  
 18" INV.= 5315.85

INLET 922R  
 STA. 922+25.00 OFFSET RT.  
 REQ'D. INLET TYPE R (L=5')(H=5')  
 WITH A 18" X 50" RCP  
 TO INLET 922L.  
 18" INV.= 5316.07

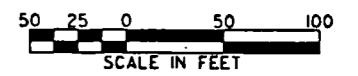
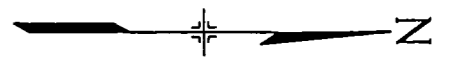
MODIFY EXISTING MANHOLE.  
 SEE MANHOLE MODIFICATION  
 ON MISC. DETAIL SHEET.

INLET 927L  
 STA. 926+97.49 OFFSET LT.  
 REQ'D. INLET TYPE R (L=5')(H=5')  
 WITH A 18" X 34" RCP  
 TO EXISTING MANHOLE.  
 18" INV.= 5313.93

MODIFY EXISTING MANHOLE.  
 SEE MANHOLE MODIFICATION  
 ON MISC. DETAIL SHEET.

INLET 927R  
 STA. 926+97.49 OFFSET RT.  
 REQ'D. INLET TYPE R (L=5')(H=5')  
 WITH A 18" X 45" RCP  
 TO EXISTING MANHOLE  
 18" INV.= 5314.23

STA. 923+20.05 TRUCK ROUTE =  
 STA. 412+25.15 QUINCY AVE.

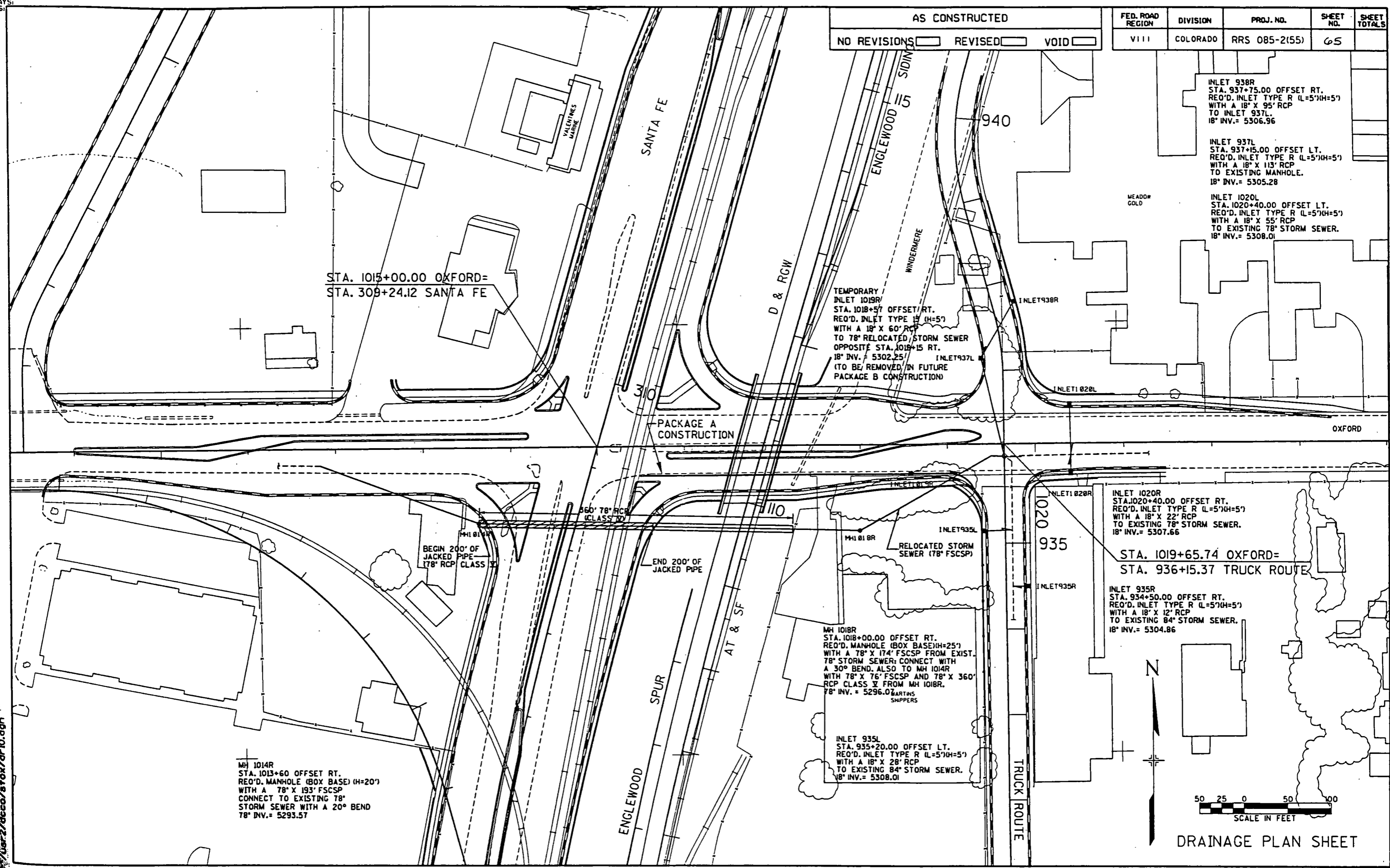


DRAINAGE PLAN SHEET

20-APR-1991 10:53  
 UD-110025 DR12.DGN

AS CONSTRUCTED  
 NO REVISIONS  REVISED  VOID

FED. ROAD REGION	DIVISION	PROJ. NO.	SHEET NO.	SHEET TOTALS
VIII	COLORADO	RRS 085-2(155)	65	



STA. 1015+00.00 OXFORD=  
 STA. 309+24.12 SANTA FE

TEMPORARY  
 INLET 1019R  
 STA. 1018+57 OFFSET RT.  
 REQ'D. INLET TYPE R (L=5') (H=5')  
 WITH A 18" X 60" RCP  
 TO 78" RELOCATED STORM SEWER  
 OPPOSITE STA. 1019+15 RT.  
 18" INV. = 5302.25'  
 (TO BE REMOVED IN FUTURE  
 PACKAGE B CONSTRUCTION)

INLET 938R  
 STA. 937+75.00 OFFSET RT.  
 REQ'D. INLET TYPE R (L=5') (H=5')  
 WITH A 18" X 95" RCP  
 TO INLET 937L.  
 18" INV. = 5306.96

INLET 937L  
 STA. 937+15.00 OFFSET LT.  
 REQ'D. INLET TYPE R (L=5') (H=5')  
 WITH A 18" X 113" RCP  
 TO EXISTING MANHOLE.  
 18" INV. = 5305.28

INLET 1020L  
 STA. 1020+40.00 OFFSET LT.  
 REQ'D. INLET TYPE R (L=5') (H=5')  
 WITH A 18" X 55" RCP  
 TO EXISTING 78" STORM SEWER.  
 18" INV. = 5308.01

PACKAGE A  
 CONSTRUCTION

BEGIN 200' OF  
 JACKED PIPE  
 (78" RCP CLASS X)

END 200' OF  
 JACKED PIPE

INLET 1020R  
 STA. 1020+40.00 OFFSET RT.  
 REQ'D. INLET TYPE R (L=5') (H=5')  
 WITH A 18" X 22" RCP  
 TO EXISTING 78" STORM SEWER.  
 18" INV. = 5307.66

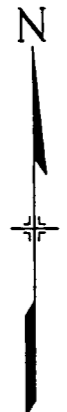
STA. 1019+65.74 OXFORD=  
 STA. 936+15.37 TRUCK ROUTE

INLET 935R  
 STA. 934+50.00 OFFSET RT.  
 REQ'D. INLET TYPE R (L=5') (H=5')  
 WITH A 18" X 12" RCP  
 TO EXISTING 84" STORM SEWER.  
 18" INV. = 5304.86

MH 1018R  
 STA. 1018+00.00 OFFSET RT.  
 REQ'D. MANHOLE (BOX BASE) (H=25')  
 WITH A 78" X 174" FSCSP FROM EXIST.  
 78" STORM SEWER; CONNECT WITH  
 A 30° BEND. ALSO TO MH 1014R  
 WITH 78" X 76" FSCSP AND 78" X 360"  
 RCP CLASS X FROM MH 1018R.  
 78" INV. = 5296.07'  
 MARTINS SHIPPERS

INLET 935L  
 STA. 935+20.00 OFFSET LT.  
 REQ'D. INLET TYPE R (L=5') (H=5')  
 WITH A 18" X 28" RCP  
 TO EXISTING 84" STORM SEWER.  
 18" INV. = 5308.01

MH 1014R  
 STA. 1013+60 OFFSET RT.  
 REQ'D. MANHOLE (BOX BASE) (H=20')  
 WITH A 78" X 193" FSCSP  
 CONNECT TO EXISTING 78"  
 STORM SEWER WITH A 20° BEND  
 78" INV. = 5293.57

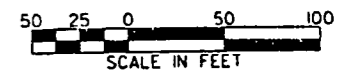
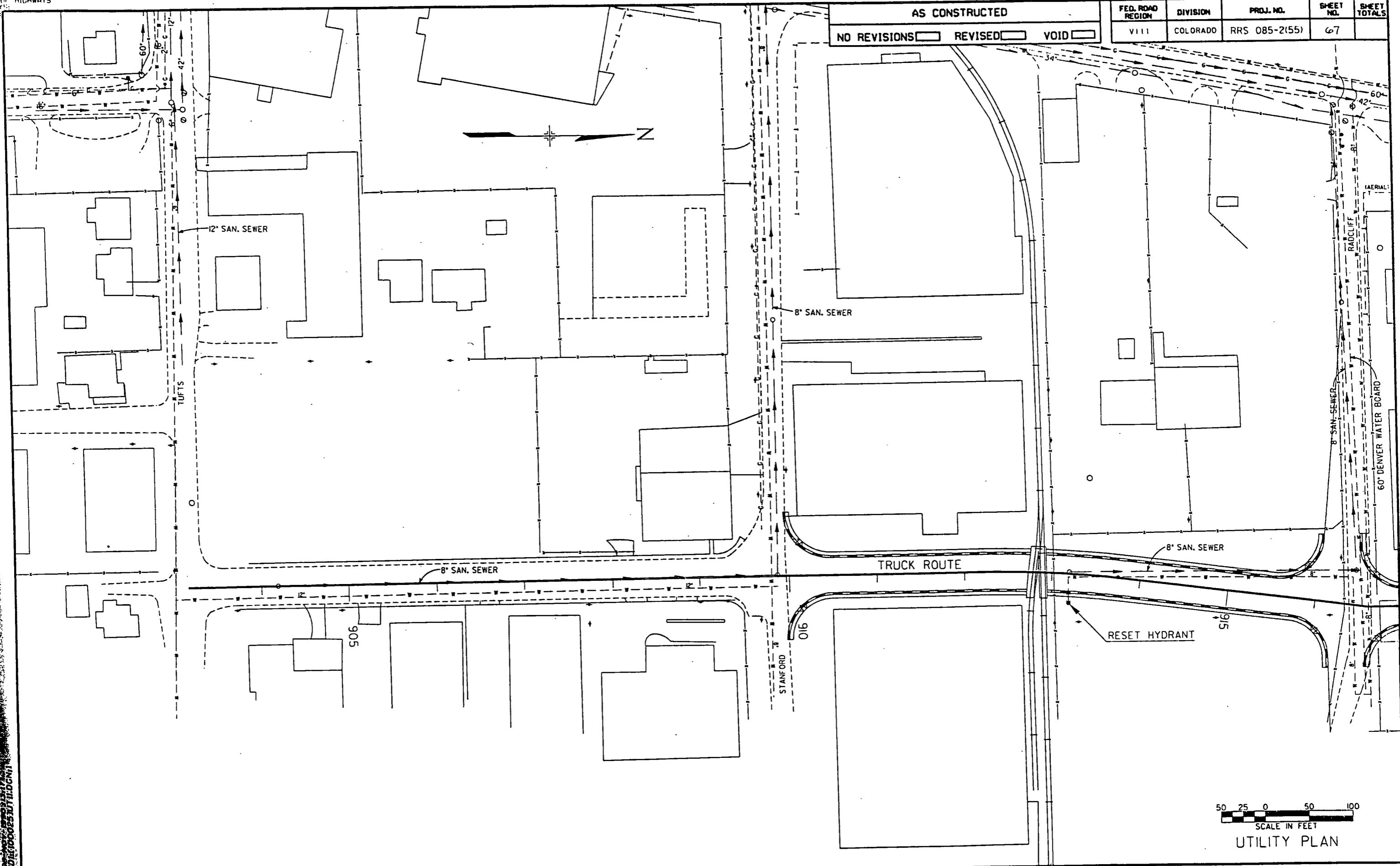


DRAINAGE PLAN SHEET



AS CONSTRUCTED  
NO REVISIONS  REVISED  VOID

FED. ROAD REGION	DIVISION	PROJ. NO.	SHEET NO.	SHEET TOTALS
VIII	COLORADO	RRS 085-2(55)	67	

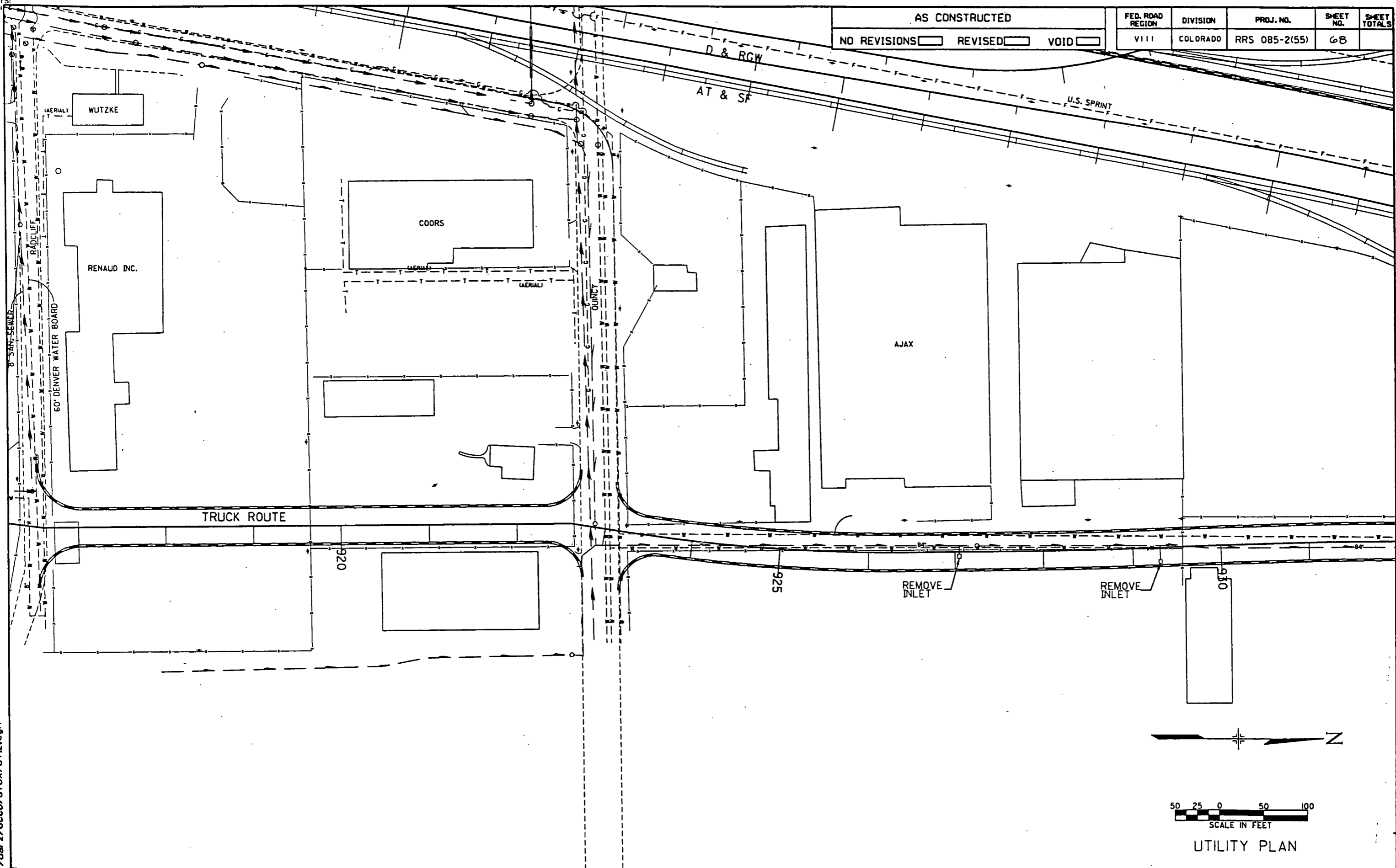


UTILITY PLAN

UDR 1000025UT1.DGN

AS CONSTRUCTED  
NO REVISIONS  REVISED  VOID

FED. ROAD REGION	DIVISION	PROJ. NO.	SHEET NO.	SHEET TOTALS
VIII	COLORADO	RRS 085-2(55)	68	

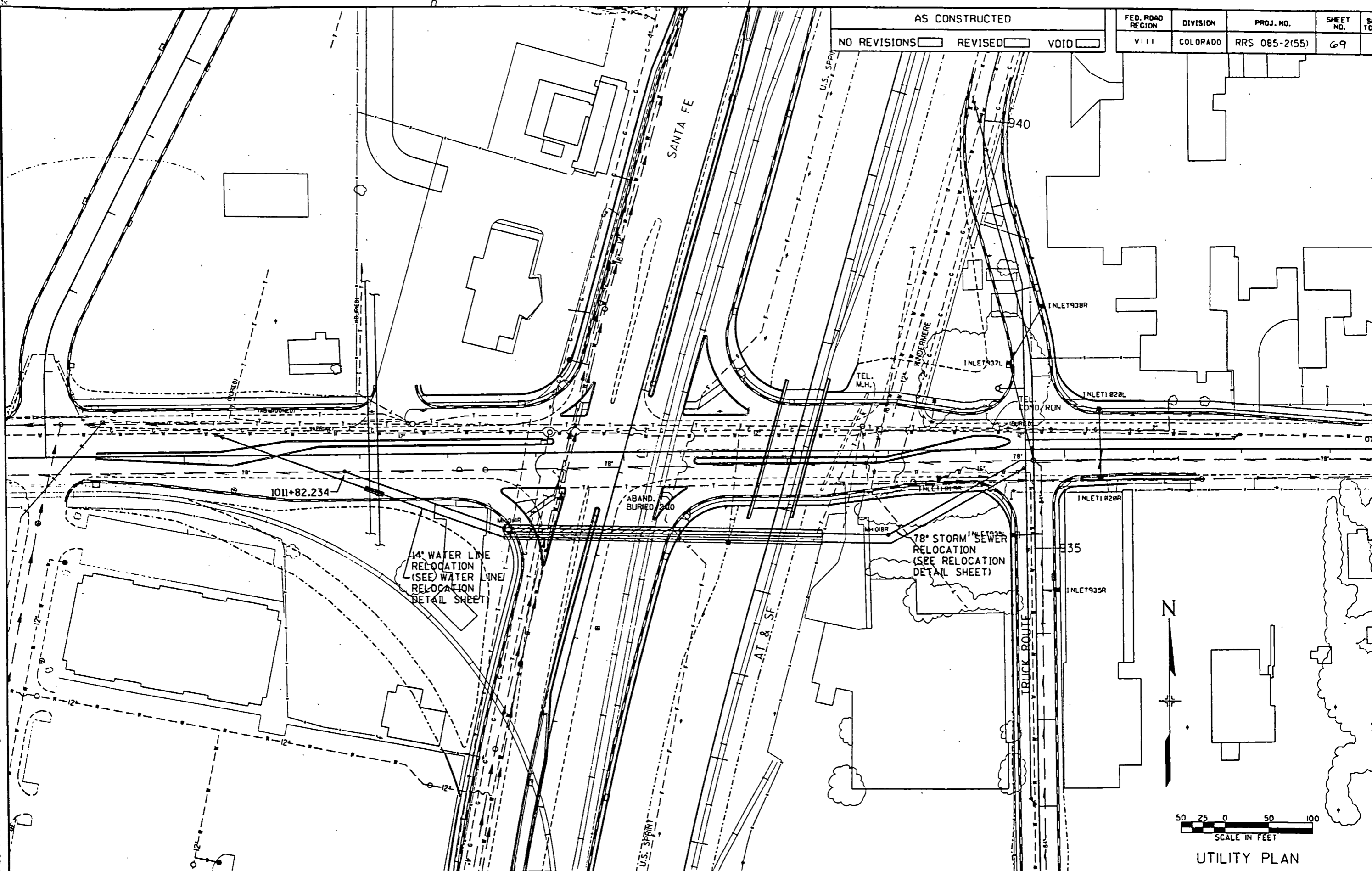


13-APR-1991 15:48  
/usr2/dcco/stox/ut12.dgn

AS CONSTRUCTED

NO REVISIONS  REVISED  VOID

FED. ROAD REGION	DIVISION	PROJ. NO.	SHEET NO.	SHEETS TOTAL
VIII	COLORADO	RRS 085-2(55)	69	



13-APR-1991 16:11  
 /usr/dccco/sfox/ut10.dgn

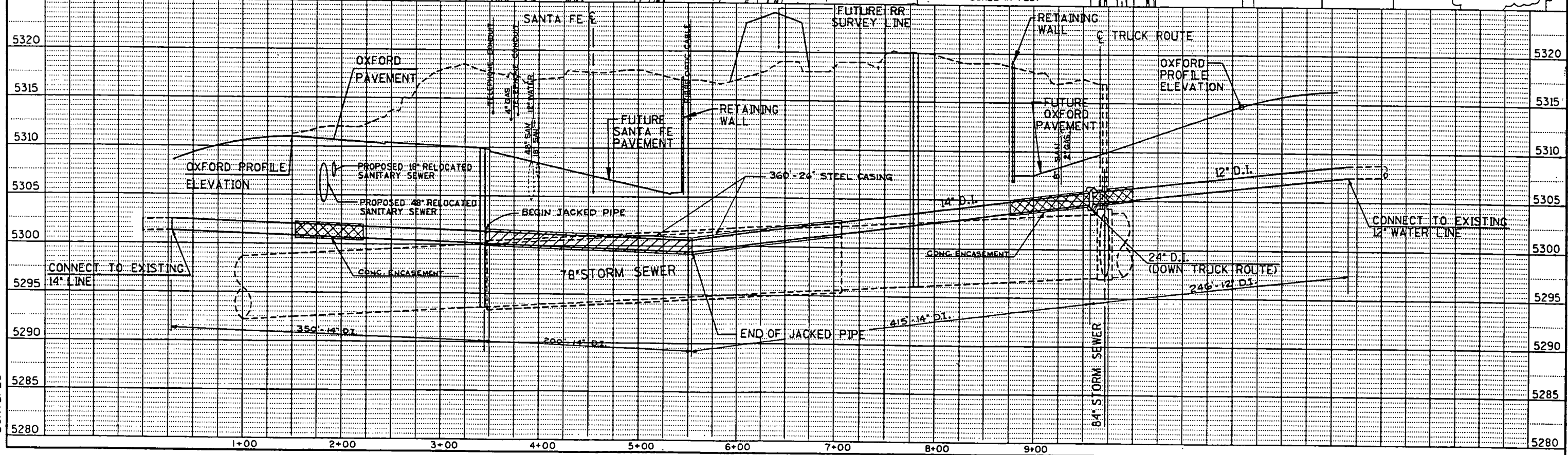
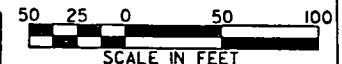
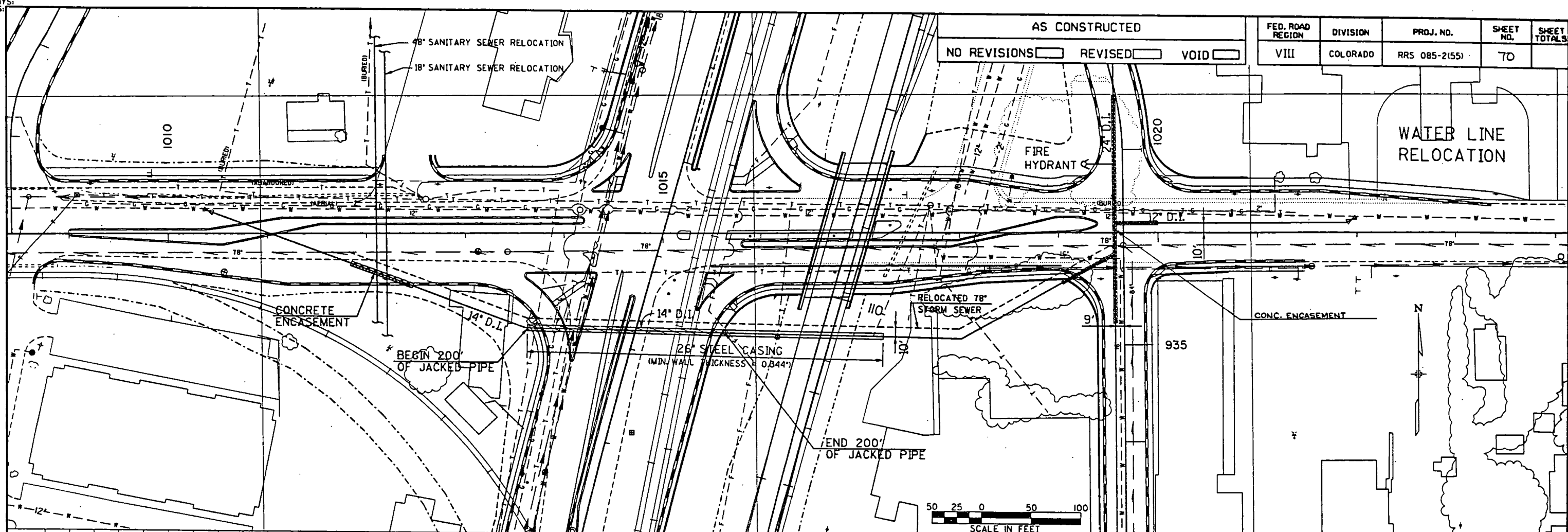
UTILITY PLAN

UDA1:C100,25JUT10.DC

AS CONSTRUCTED

NO REVISIONS  REVISED  VOID

FED. ROAD REGION	DIVISION	PROJ. NO.	SHEET NO.	SHEET TOTALS
VIII	COLORADO	RRS 085-2(55)	70	

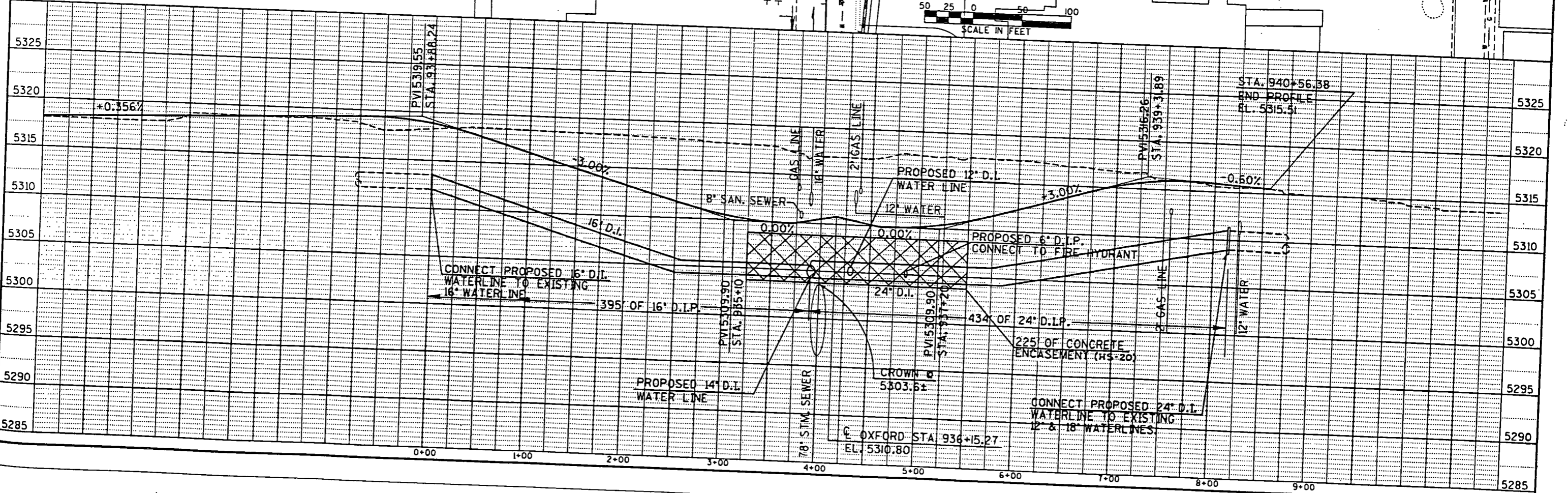
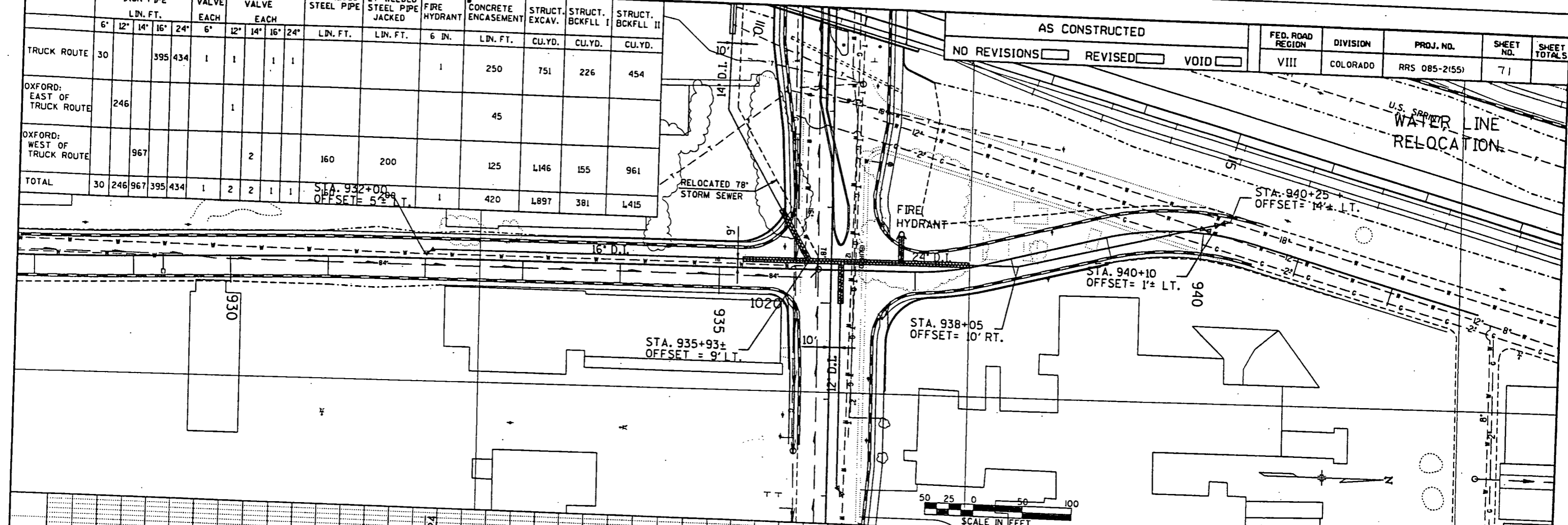


15 APR 1991 14:18  
 DGN SPEC

	DUCTILE IRON PIPE					GATE VALVE					BUTTERFLY VALVE					27" WELDED STEEL PIPE	27" WELDED STEEL PIPE JACKED	FIRE HYDRANT	CONCRETE ENCASEMENT	STRUCT. EXCAV.	STRUCT. BCKFL I	STRUCT. BCKFL II
	6"	12"	14"	16"	24"	6"	12"	14"	16"	24"	6"	12"	14"	16"	24"							
TRUCK ROUTE	30			395	434	1	1	1	1	1							1	250	751	226	454	
OXFORD: EAST OF TRUCK ROUTE		246					1										45					
OXFORD: WEST OF TRUCK ROUTE			967					2							160	200	125	L146	155	961		
TOTAL	30	246	967	395	434	1	2	2	1	1				320	400	1	420	L897	381	L415		

AS CONSTRUCTED  
 NO REVISIONS  REVISED  VOID

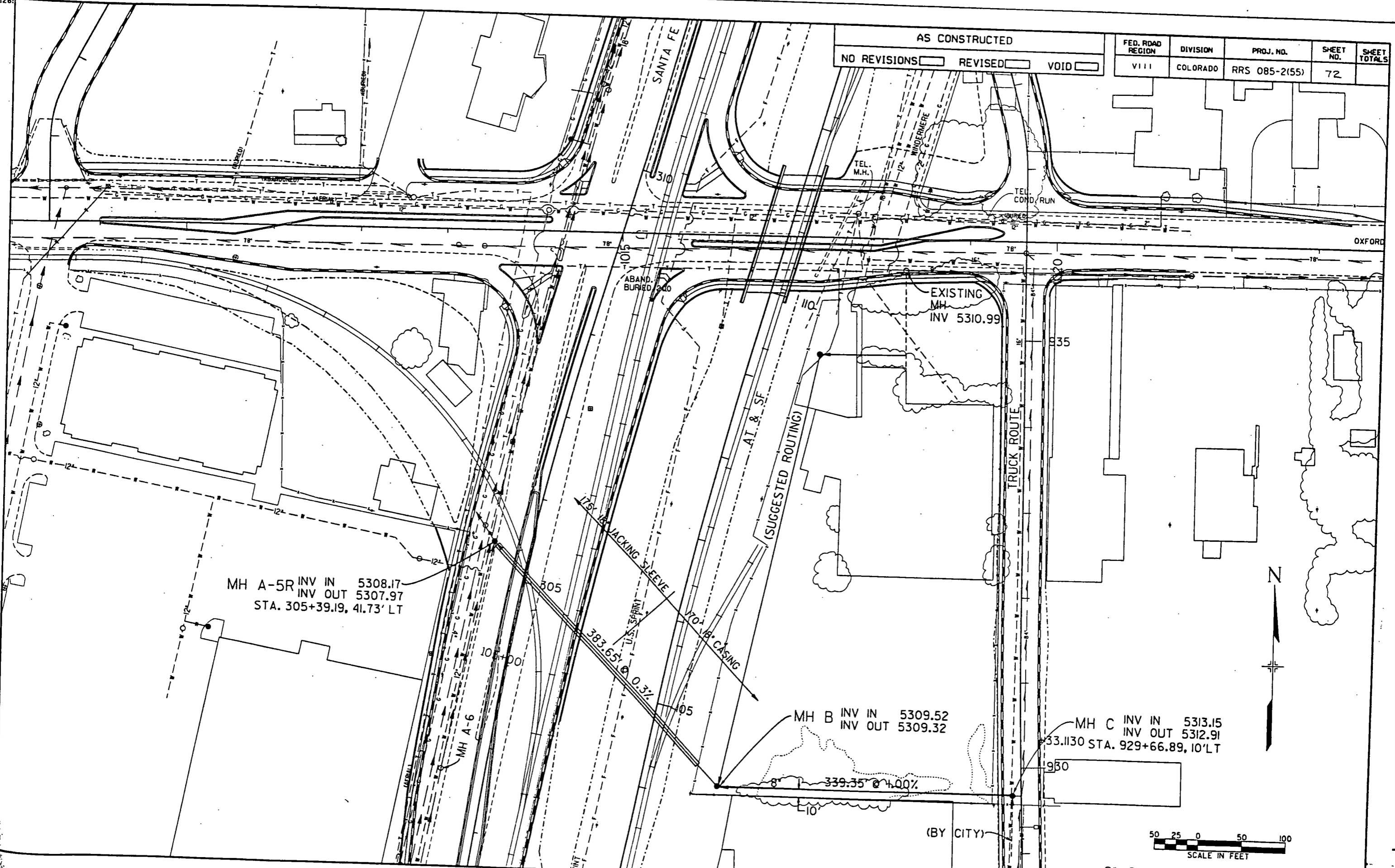
FED. ROAD REGION	DIVISION	PROJ. NO.	SHEET NO.	SHEET TOTALS
VIII	COLORADO	RRS 085-2(55)	71	



DGN SPEC

AS CONSTRUCTED  
 NO REVISIONS  REVISED  VOID

FED. ROAD REGION	DIVISION	PROJ. NO.	SHEET NO.	SHEET TOTALS
VIII	COLORADO	RRS 085-2(55)	72	

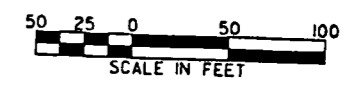


MH A-5R INV IN 5308.17  
 INV OUT 5307.97  
 STA. 305+39.19, 41.73' LT

MH B INV IN 5309.52  
 INV OUT 5309.32

MH C INV IN 5313.15  
 INV OUT 5312.91  
 STA. 929+66.89, 10' LT

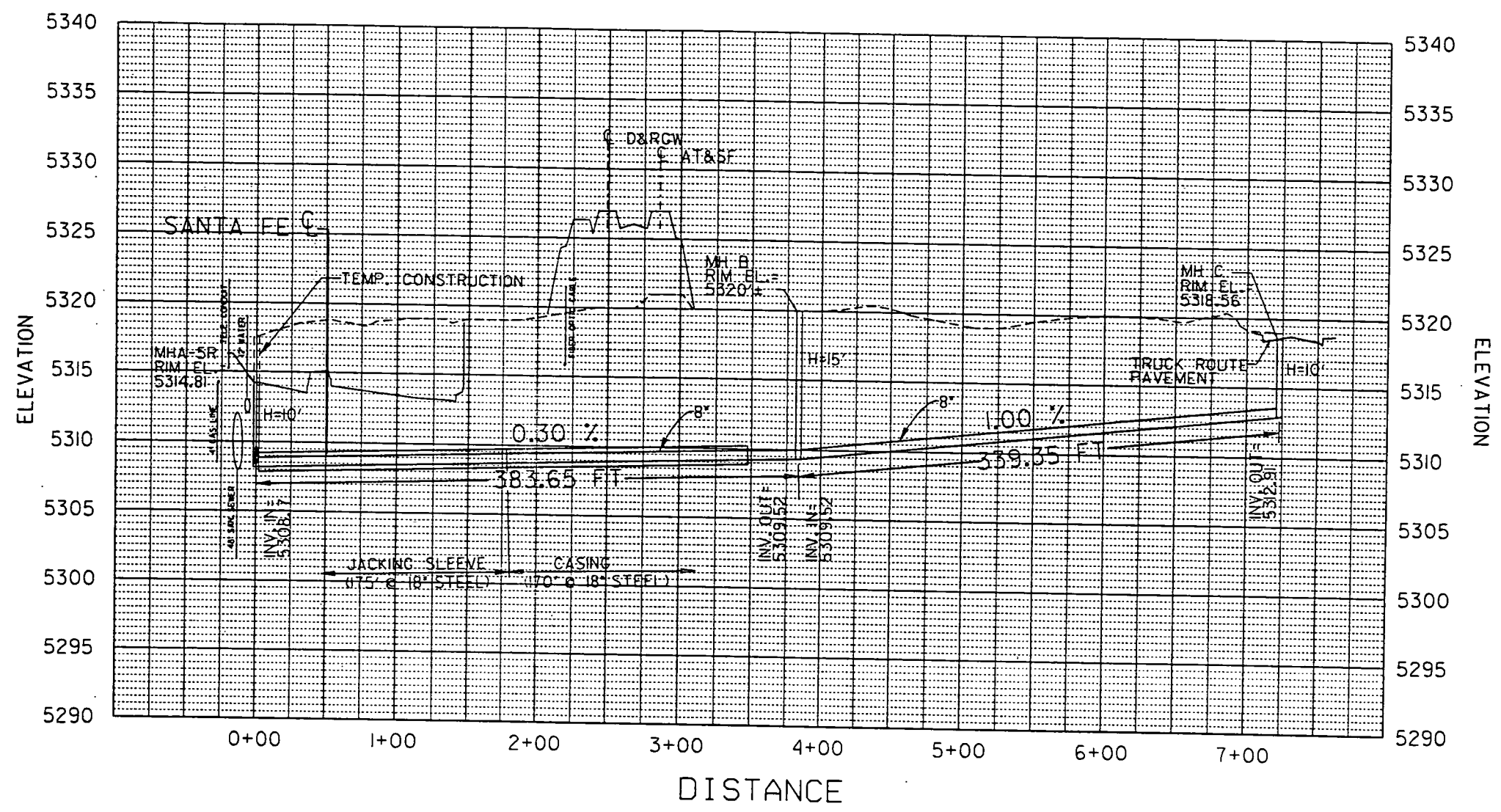
(BY CITY)



8" SANITARY SEWER CROSSING

FED. ROAD REGION	DIVISION	PROJ. NO.	SHEET NO.	SHEET TOTALS
VIII	COLORADO	RRS 085-2(55)	73	

## 8 IN. SANITARY SEWER CROSSING



SEGEMENT	EMBANKMENT (CIP) CY	STRUCTURE EXCAVATION CY	STRUCTURE BACKFILL 1 CY	STRUCTURE BACKFILL 2 CY	MANHOLE SLAB-BASE		8" PIPE LF	18" WELDED STEEL PIPE LF	18" WELDED STEEL PIPE (JACKED) LF
					H=10'	H=15'			
MHA-5R - MH B	216	272	12	44	1	1	384	170	175
MH B - MH C	206	262	9	47	1		340		
TOTALS	422	534	21	91	2	1	724	170	175

TABULATION OF SANITARY SEWER QUANTITIES

8" SANITARY SEWER  
 PROFILE

100411000251SANRE.DGN:1