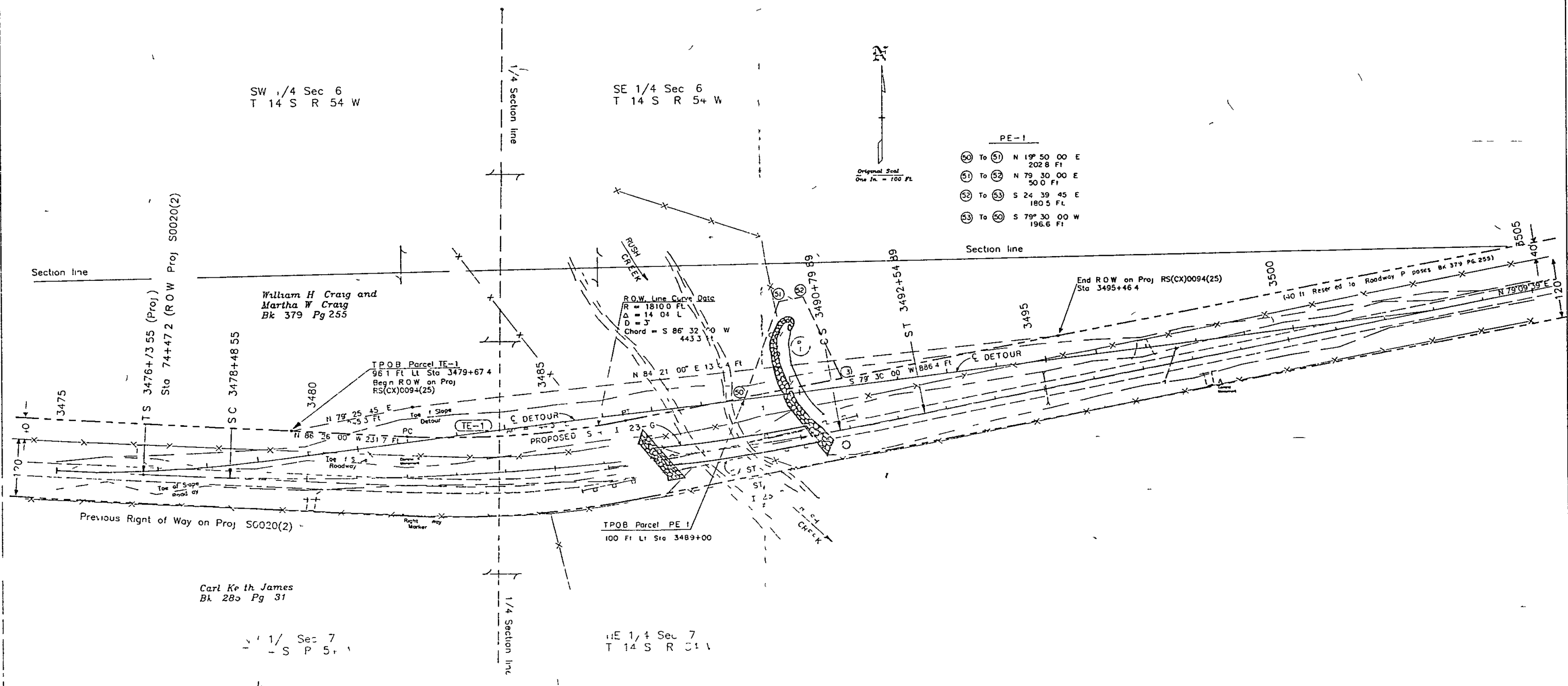


MP 66.1 to 66.6

FED. ROAD DISTRICT	DIVISION	PROJECT NO.	SHEET NO.	SHEET TOTALS
VIII	CGLO	RS(CX)0094(25)	2	2

RIGHT OF WAY

REVISIONS				
2791	ADDED PE 1			C-1
21491	COR. BK. B. PG. PAR. PE 1	TE 1		D-1



- PE-1
- 50 To 51 N 19° 50' 00" E 202.8 Ft
 - 51 To 52 N 79° 30' 00" E 50.0 Ft
 - 52 To 53 S 24° 39' 45" E 180.5 Ft
 - 53 To 54 S 79° 30' 00" W 196.6 Ft

SW 1/4 Sec 6
T 14 S R 54 W

SE 1/4 Sec 6
T 14 S R 5+ W

William H Craig and
Martha W Craig
Bk 379 Pg 255

Carl Keith James
Bk 280 Pg 31

TPOB Parcel PE 1
100 Ft Lt Sta 3489+00

TPOB Parcel TE-1
96.1 Ft Lt Sta 3479+67.4
Begin ROW on Proj
RS(CX)0094(25)

ROW Line Curve Data
R = 1810.0 Ft
Δ = 14.04 L
D = 3
Chord = S 86° 32' 00" W 443.3 Ft

End ROW on Proj RS(CX)0094(25)
Sta 3495+46.4

140 ft Reserved to Roadway Proposed Bk 379 Pg 255

Previous Right of Way on Proj SC020(2)

SW 1/4 Sec 7
T 14 S R 54 W

SE 1/4 Sec 7
T 14 S R 54 W