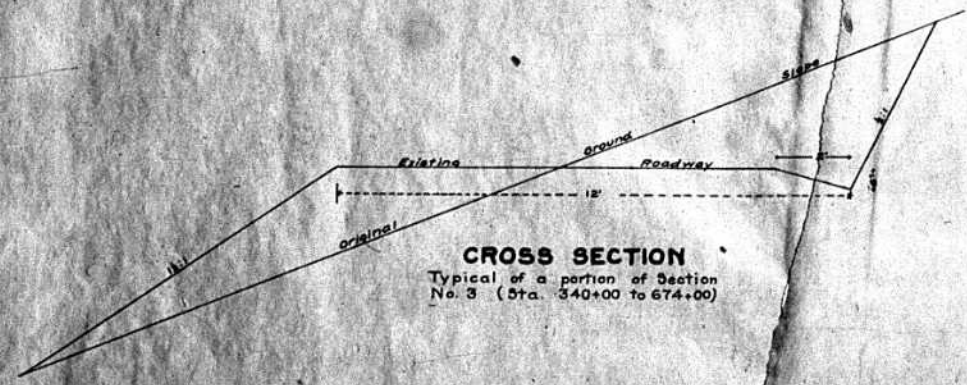


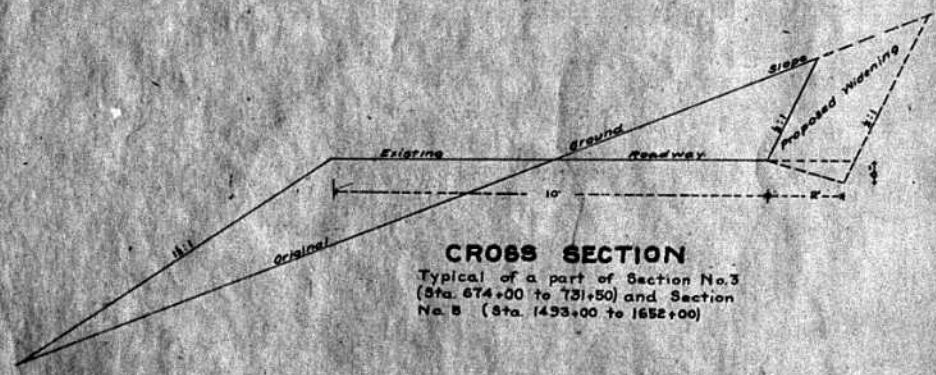
GENERAL NOTE:

Turnouts Figured every 1000 Feet.
Excavation Quantities computed from Abney Level slope data on file in District Office No. 3

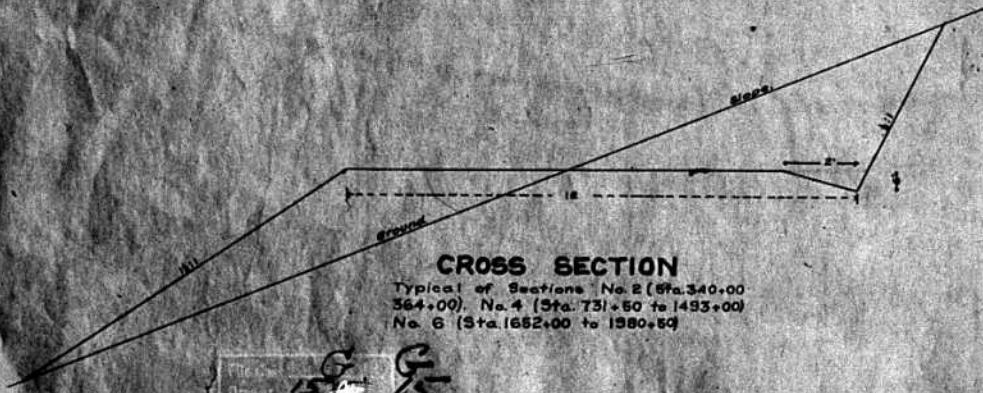
RD. NO.	SECT. NO.	PROJ. NO.	DATE	SCALE	BY	CHECKED
3	Gold	15	R.B.	1		



CROSS SECTION
Typical of a portion of Section No. 3 (Sta. 340+00 to 674+00)



CROSS SECTION
Typical of a part of Section No. 3 (Sta. 674+00 to 731+50) and Section No. 5 (Sta. 1453+00 to 1652+00)



CROSS SECTION
Typical of Sections No. 2 (Sta. 340+00 to 364+00), No. 4 (Sta. 731+50 to 1493+00) and No. 6 (Sta. 1652+00 to 1980+00)

U.S. BUREAU OF PUBLIC ROADS
DISTRICT No. 5
RECONNAISSANCE SURVEY
FROM
CRESTED BUTTE TO SOMERSET
GUNNISON NATIONAL FOREST
GUNNISON COUNTY
COLORADO
NOVEMBER 1918
Scales: Horiz. 1"=400'
Vert. 1"=40'

Crested Butte

APPROVED: *[Signature]*
DISTRICT ENGINEER

FED. ROAD DIST. NO.	STATE	PROJECT	SECTION	SHEET NO.	TOTAL SHEETS
2	Colo.	15	R.S. E.	9	9

INDEX
MAP & PROFILE

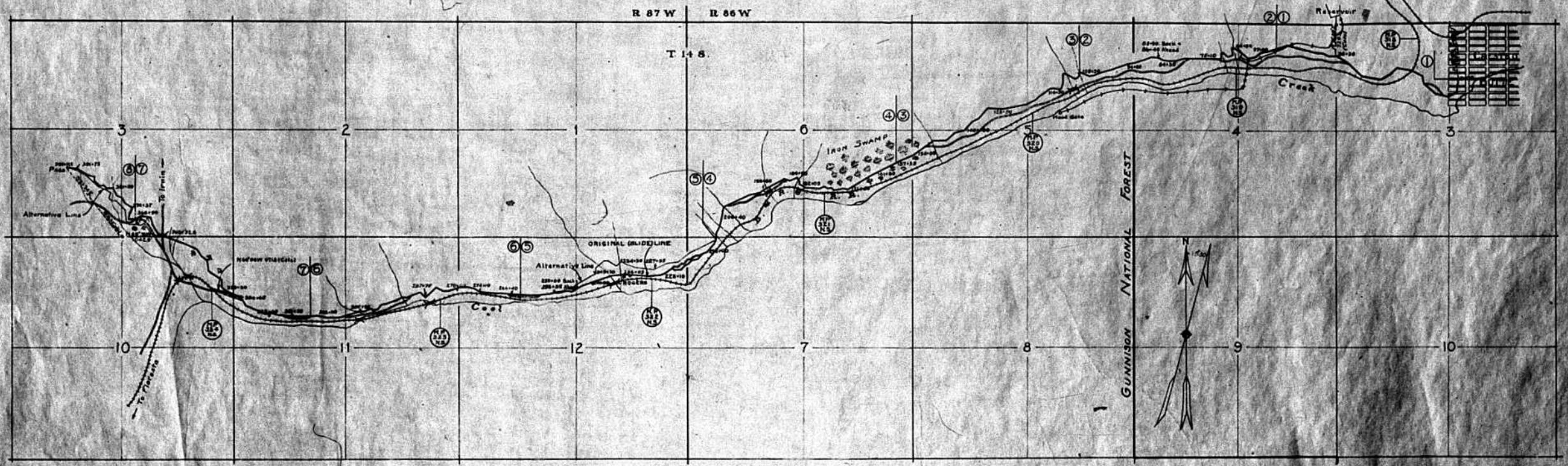
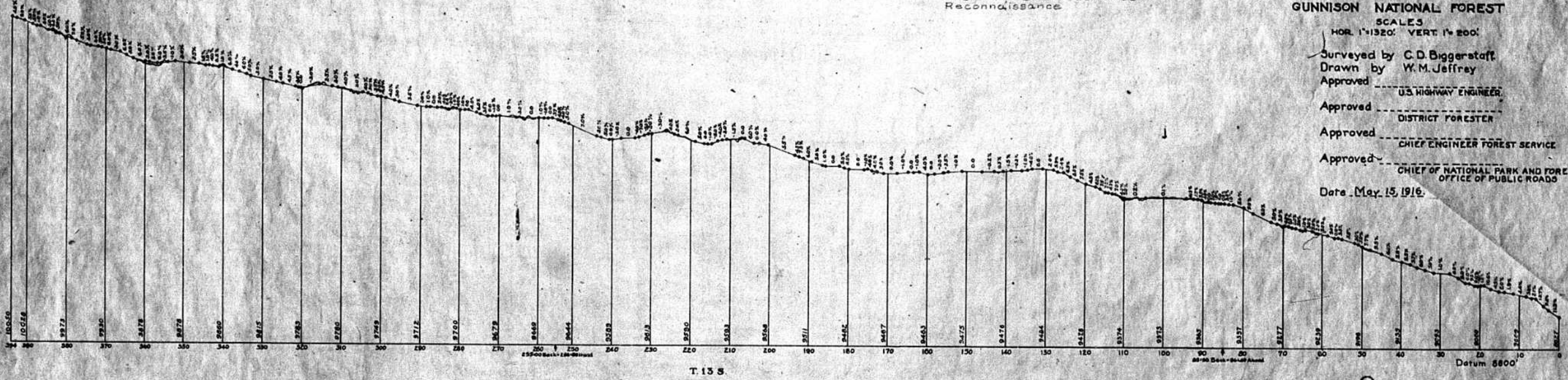
CRESTED BUTTE SOMERSET ROAD
COAL CREEK SECTION
GUNNISON NATIONAL FOREST

SURVEY MADE BY THE U.S.F.S. 1916 and adopted from Sta. 0+00 to Sta. 364+60, as part of Crested Butte Somerset Reconnaissance

SCALES
HOR. 1"=1320' VERT. 1"=200'

Surveyed by C.D. Biggerstaff
Drawn by W.M. Jeffrey
Approved _____
US HIGHWAY ENGINEER
Approved _____
DISTRICT FORESTER
Approved _____
CHIEF ENGINEER FOREST SERVICE
Approved _____
CHIEF OF NATIONAL PARK AND FOREST ROADS
OFFICE OF PUBLIC ROADS

Date May 15, 1916.

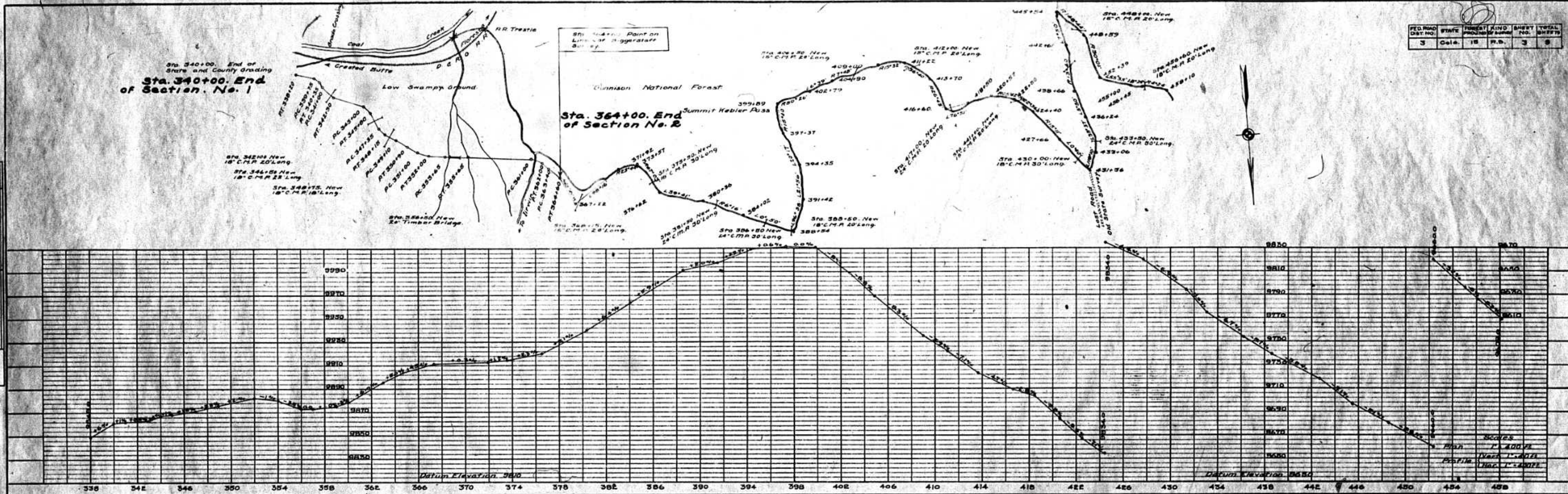


FED. ROAD DIST. NO.	STATE	PROJECT AND PROPOSED NAME	SHEET NO.	TOTAL SHEETS
3	Calif.	18	R.S.	3

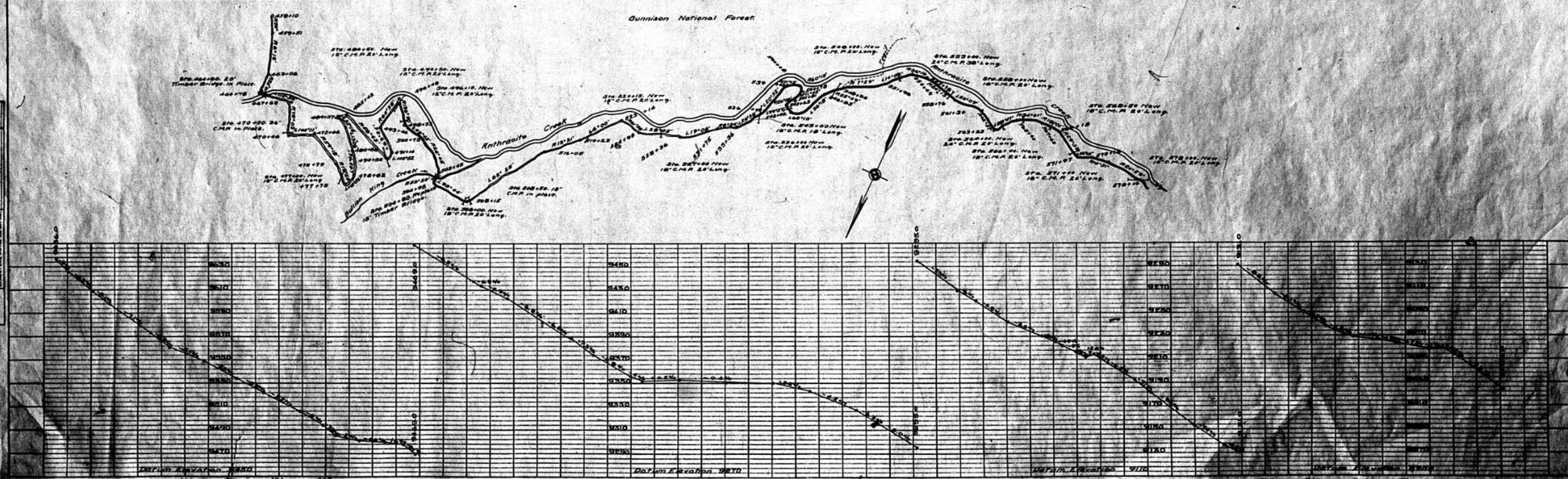
Sta. 340+00. End of State and County Grading
Sta. 340+00. End of Section No. 1

Sta. 364+00. End of Section No. 2

PLAN
 DRAWN BY: [Name]
 CHECKED BY: [Name]
 DATE: [Date]

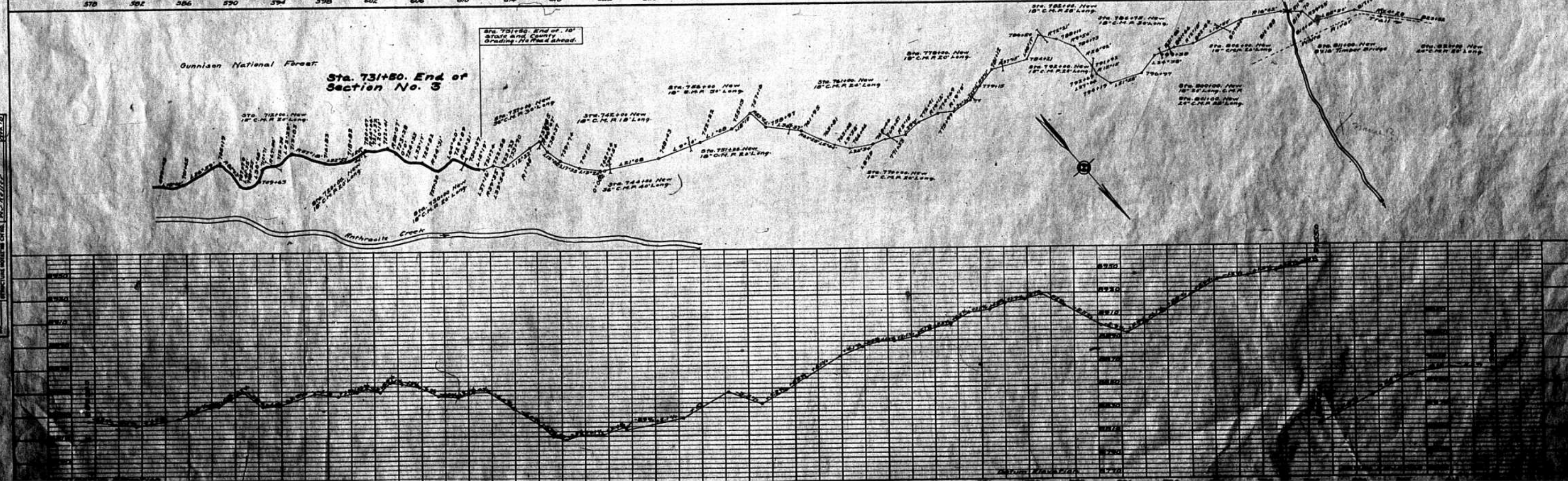
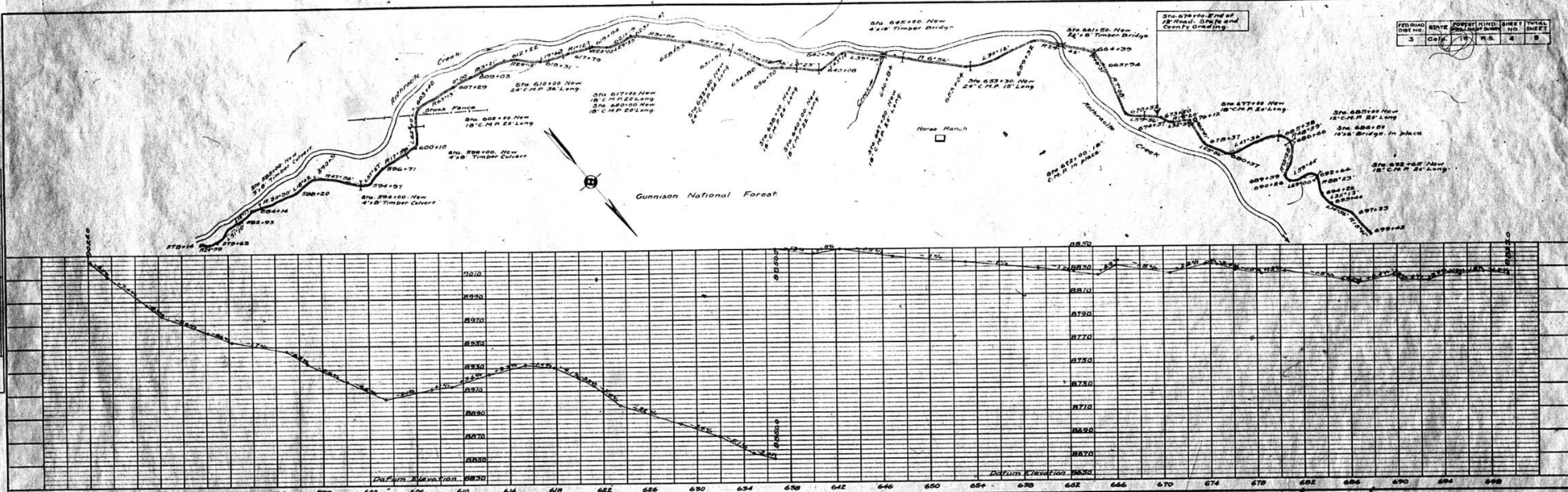


PROFILE
 DRAWN BY: [Name]
 CHECKED BY: [Name]
 DATE: [Date]



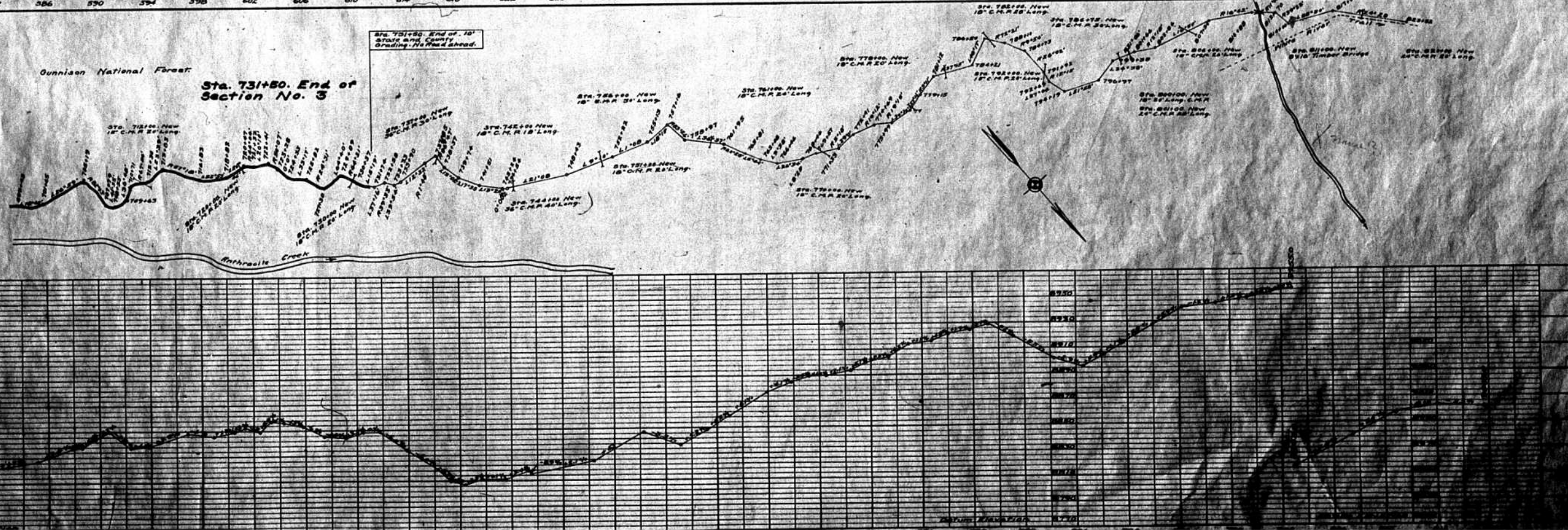
FED. ROAD DIST. NO.	STATE	PROJECT	KIND	SHEET NO.	TOTAL SHEETS
3	Colo.	19	R.S.	4	8

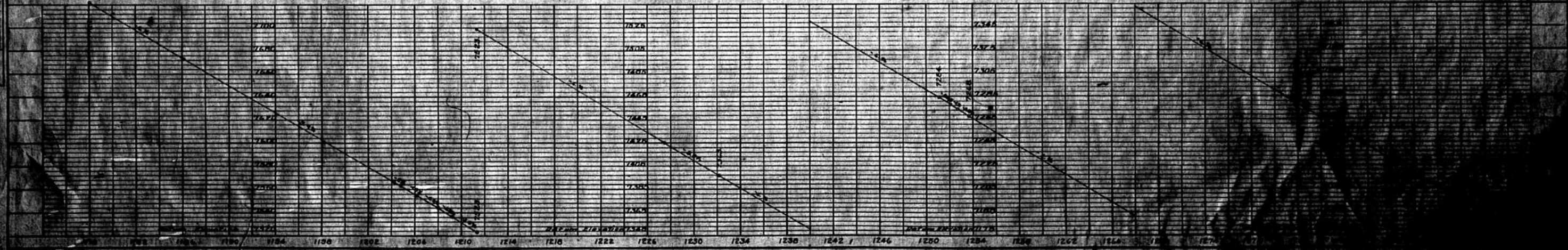
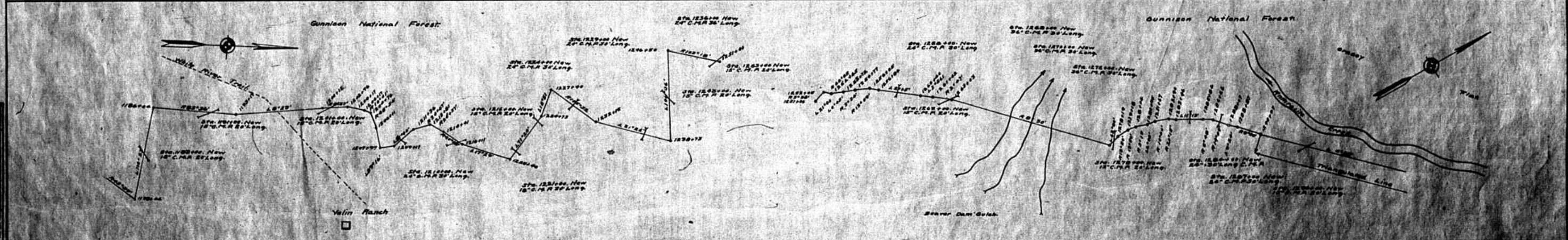
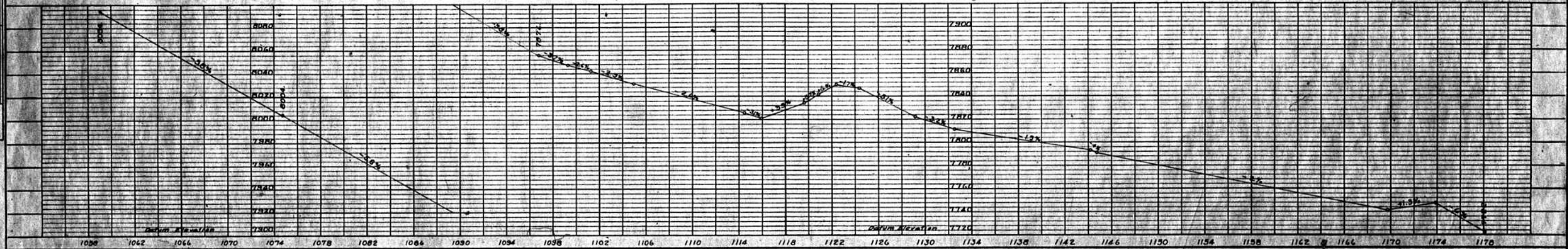
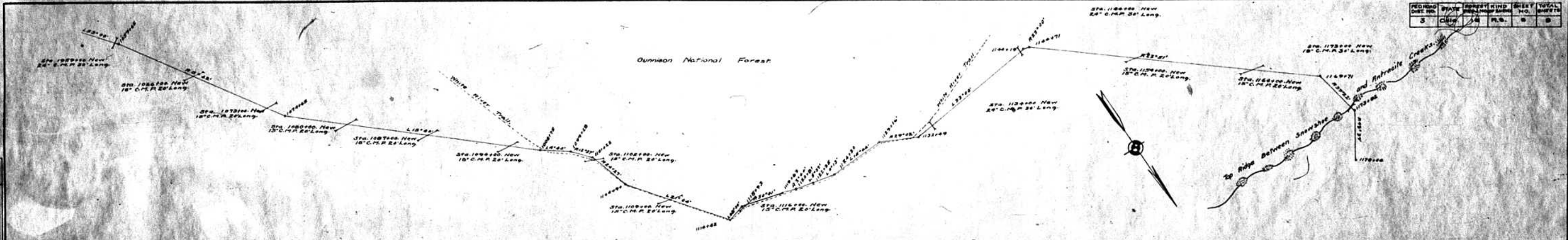
PLAN
 DRAWN BY
 CHECKED BY
 DATE



PROFILE
 DRAWN BY
 CHECKED BY
 DATE

Gunnison National Forest
Sta. 731+50. End of Section No. 3

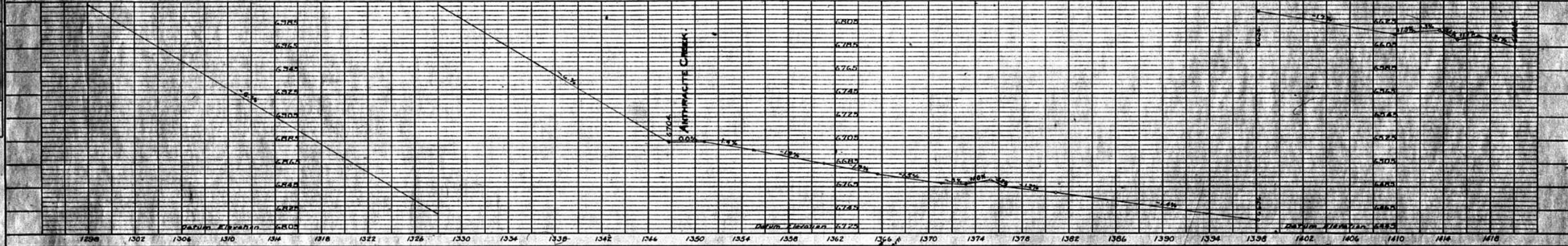
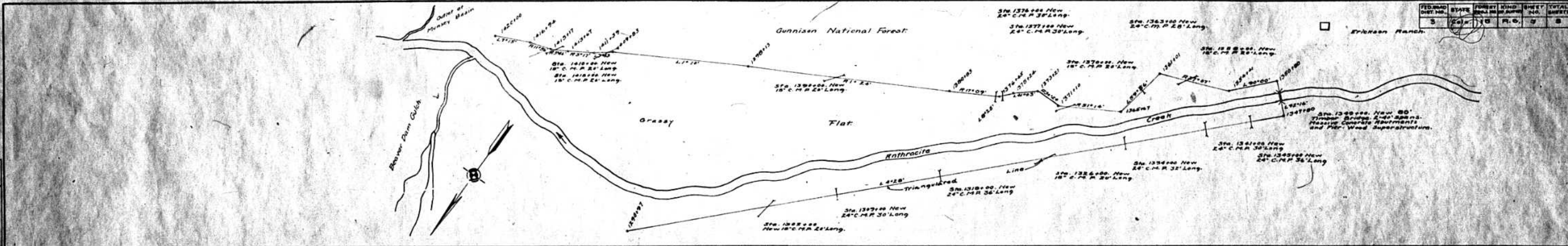




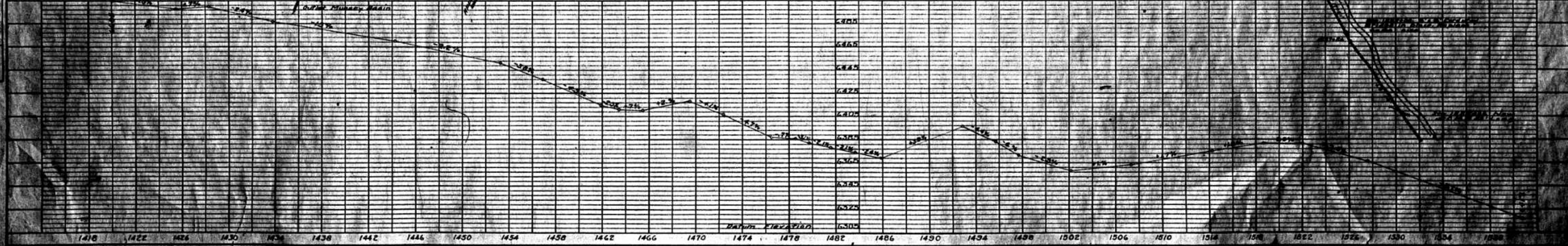
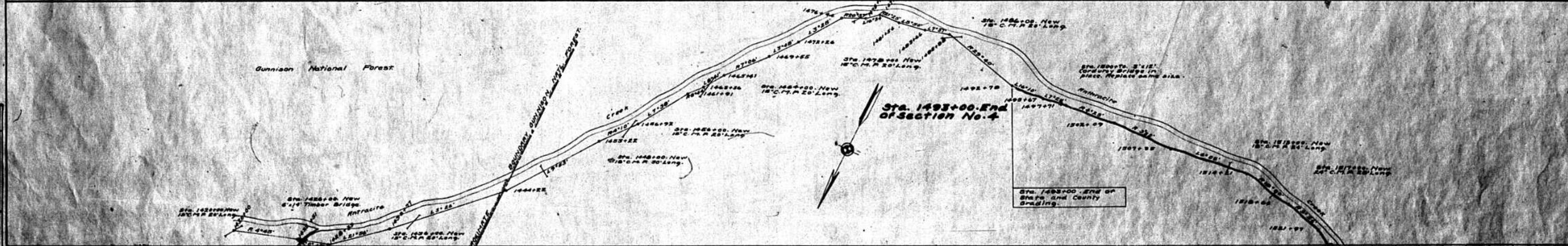
PLAN
 DRAWN BY
 CHECKED BY
 DATE
 SCALE
 PROJECT NO.
 SHEET NO.
 OF TOTAL SHEETS

PLAN
 DRAWN BY
 CHECKED BY
 DATE
 SCALE
 PROJECT NO.
 SHEET NO.
 OF TOTAL SHEETS

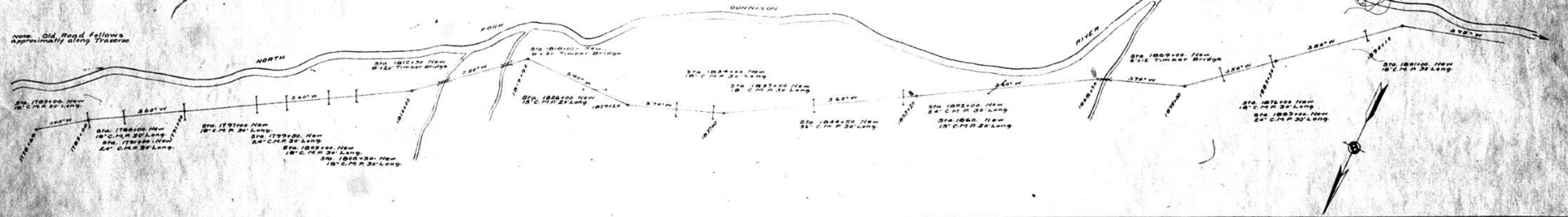
PLAN
 PLOTTED BY
 CHECKED BY
 DATE



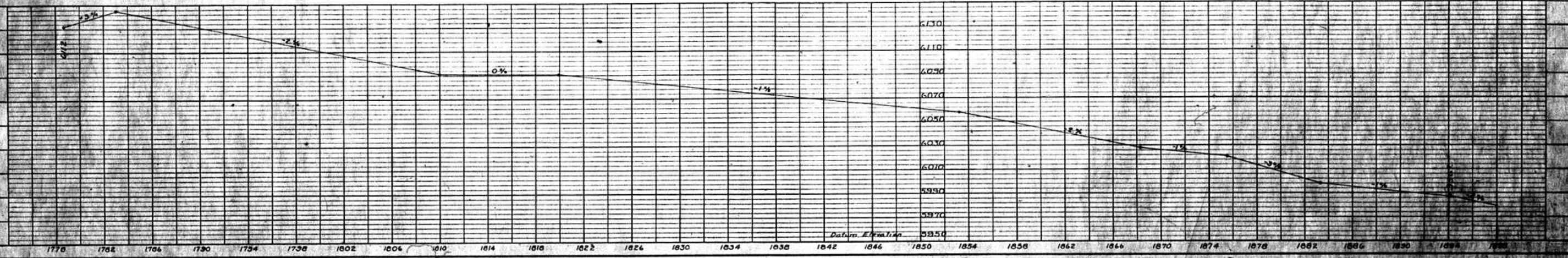
PLAN
 PLOTTED BY
 CHECKED BY
 DATE



Note: Old Road follows approximately along Traverse



PLAN	DATE	BY	CHECKED	BY
APPROVED				
ADJUSTED				
NOTED				
NO.				



PROFILE	DATE	BY	CHECKED	BY
APPROVED				
ADJUSTED				
NOTED				
NO.				

