

R.O.W. donated by El Paso County
 and Fred C. Spraul Land Co.

FEDERAL AID PROJECT NO.	DIVISION	PROJECT NO.	SHEET NO.
5	COLORADO	S-SU 0170 (5)	1

DEPARTMENT OF HIGHWAYS STATE OF COLORADO

PLAN AND PROFILE OF PROPOSED FEDERAL AID PROJECT NO. S-SU 0170 (5) STATE HIGHWAY NO. 83 EL PASO COUNTY

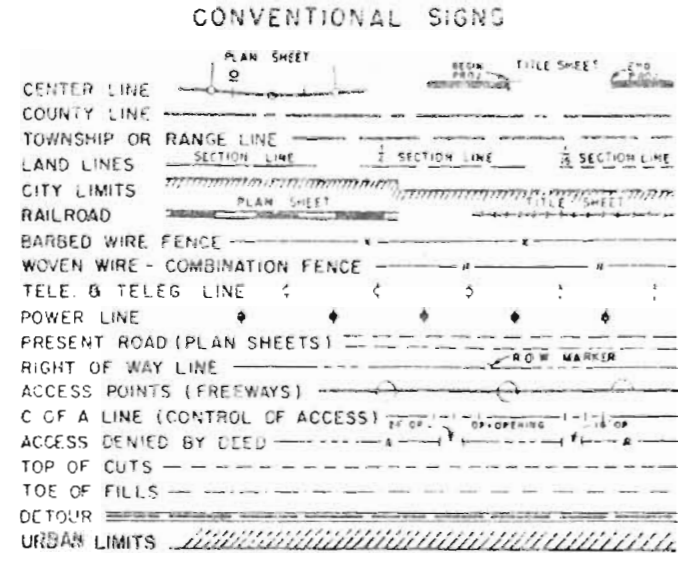
SHEET NO.
 1
 2-4

RIGHT OF WAY
 ACADEMY BOULEVARD - SOUTH

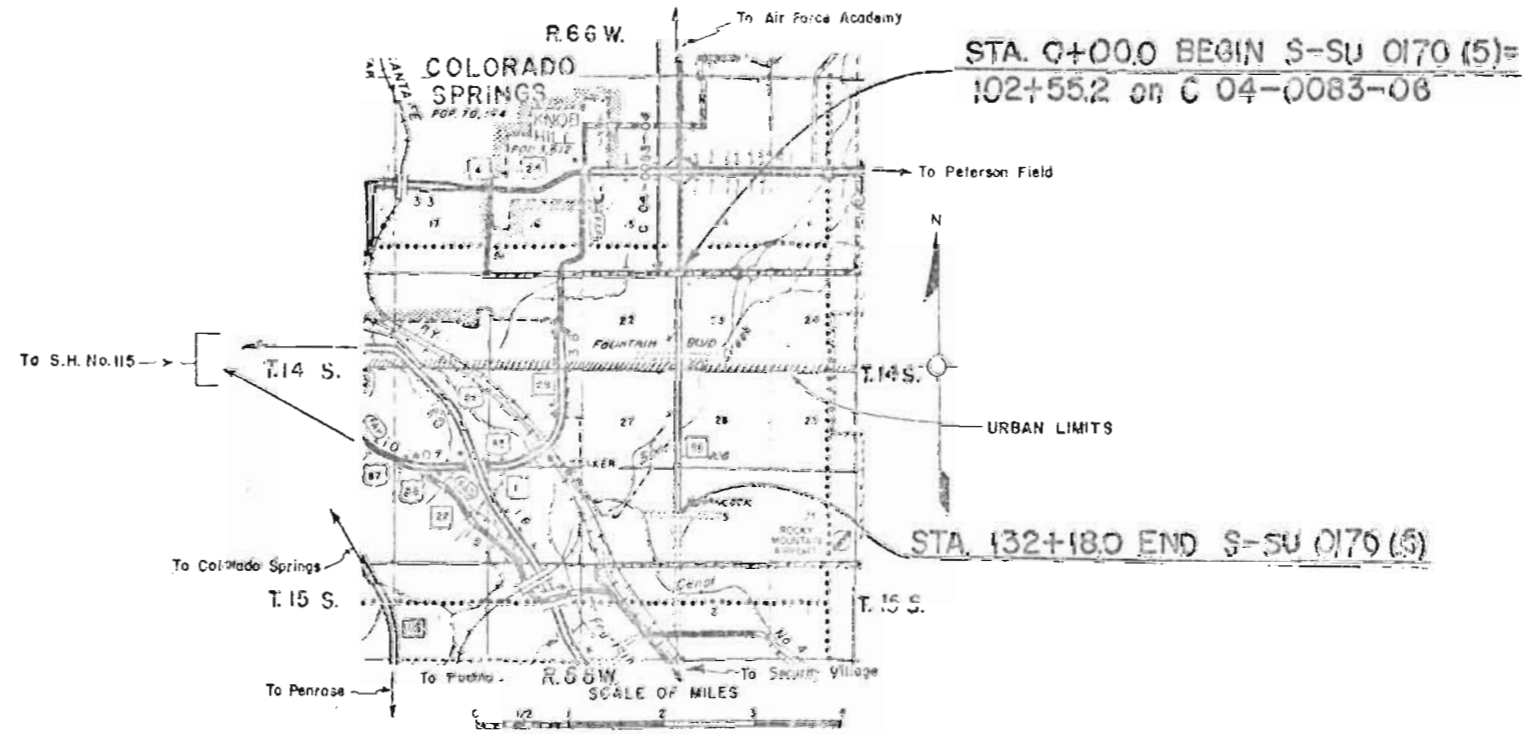
REVISIONS	
NO.	DATE

INDEX OF SHEETS

TITLE SHEET	
PLAN & PROFILE SHEET	



SCALES OF ORIGINAL DRAWINGS
 ON PLAN, 1 IN. = 100 FT.
 ON PROFILE, 1 IN. = 100 FT. HORIZONTAL
 1 IN. = 10 FT. VERTICAL
 GRADE LINE ON PROFILE IS SHOWN AS GRADE OF FINISHED ROAD

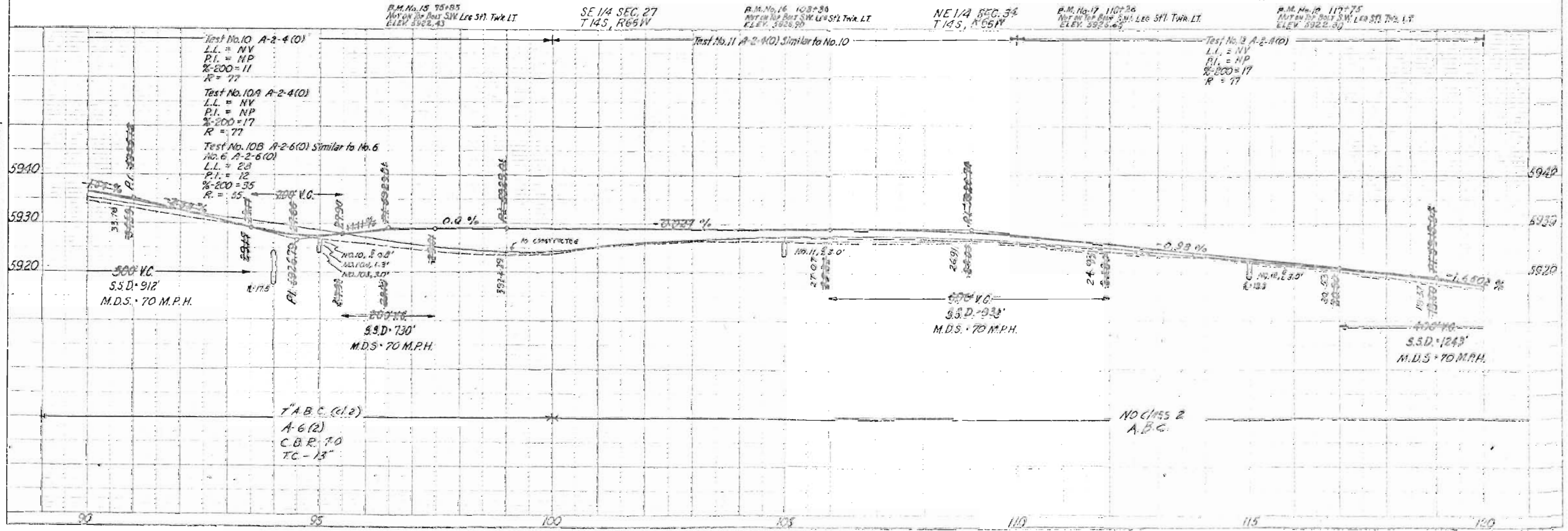
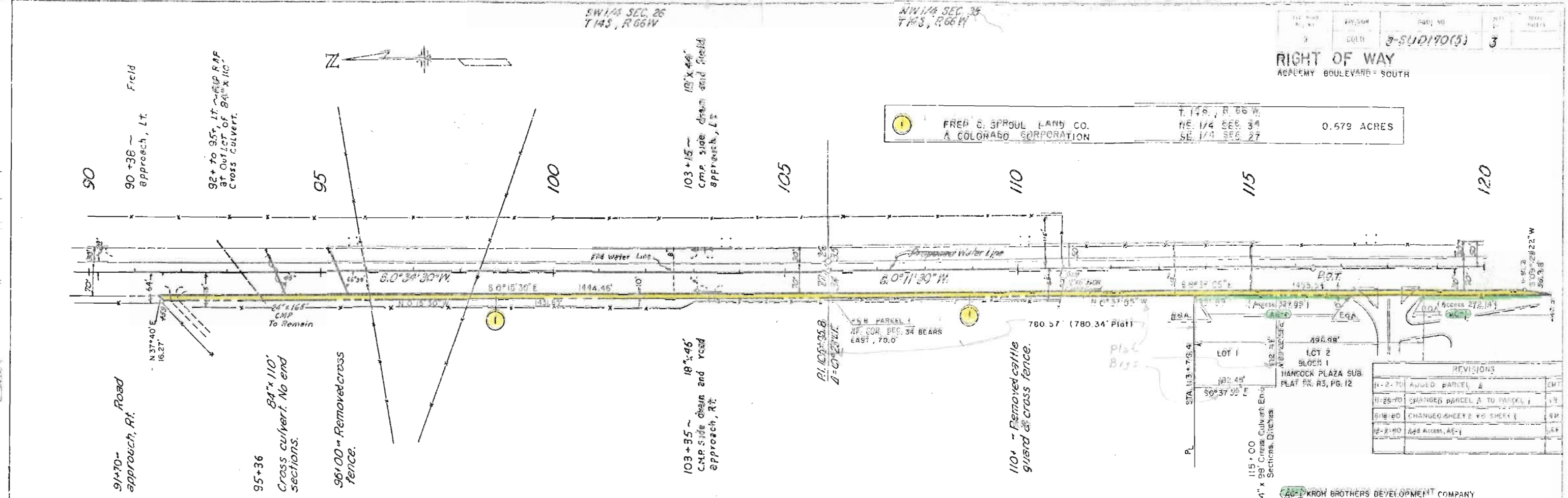


PLAN
 DATE: 11/15/10
 DRAWN BY: [Signature]
 CHECKED BY: [Signature]

1 FRED S. SPOUL LAND CO.
 A COLORADO CORPORATION
 T. 14S, R. 66W
 NE 1/4 SEC. 34
 SE 1/4 SEC. 27
 0.579 ACRES

REVISIONS	
11-2-70	ADDED PARCEL 2
11-25-70	CHANGED PARCEL A TO PARCEL 1
8-18-80	CHANGED SHEET 2 TO SHEET 3
12-2-80	ADD ACCESS, AS-1

KROH BROTHERS DEVELOPMENT COMPANY



PROFILE
 DATE: 11/15/10
 DRAWN BY: [Signature]
 CHECKED BY: [Signature]

NW 1/4 SEC. 35
T14S, R66W

SW 1/4 SEC. 35
T14S, R66W

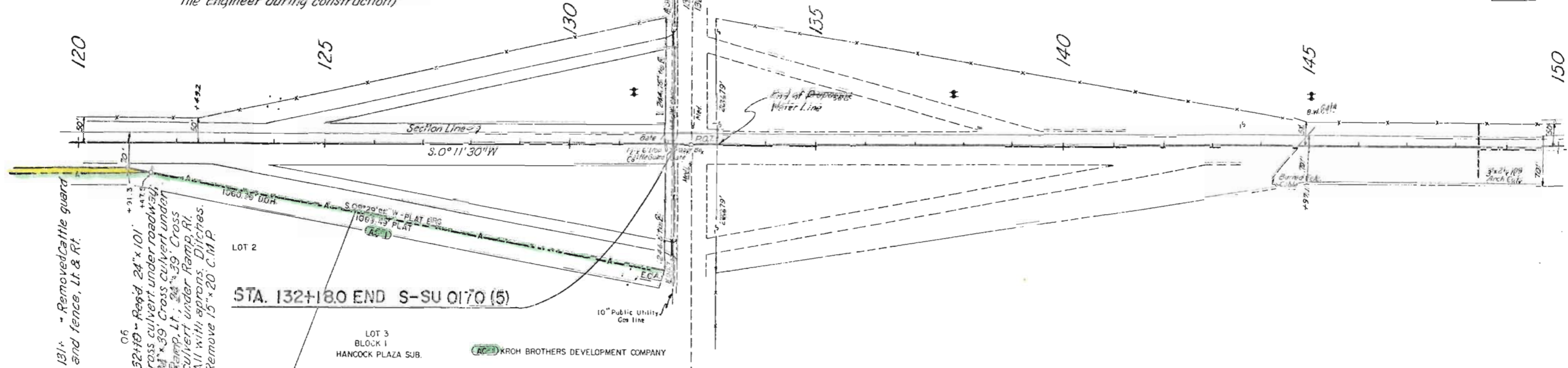
FEDERAL ROAD REGION NO.	DIVISION	PROJ. NO.	SHEET NO.	TOTAL SHEETS
9	CALIFORNIA	S-SU 0170(5)	4	

REVISIONS	
12-2-80	Add Access, AC1 & Csg Line

RIGHT OF WAY
ACADEMY BOULEVARD - SOUTH

123+ to 132+ - ~~Prop'd~~ Construct Ramps, Lt. & Rt.
(Alignment and grades to be established by the Engineer during construction)

131+ - ~~Prop'd~~ Identification Sign, 11 (Furnished and Installed by State Forces)



131+ - Removed Cattle guard and fence, Lt. & Rt.

132+10 - ~~Prop'd~~ 24" x 101" Cross culvert under roadway, Ramp, Lt. & Rt. 24" x 39" Cross culvert under Ramp, Rt. All with aprons, Ditches. Remove 15" x 20" C.M.P.

LOT 2

LOT 3
BLOCK 1
HANCOCK PLAZA SUB.

KROH BROTHERS DEVELOPMENT COMPANY

10" Public Utility Gas Line

BM. No. 19 124+15
NUT ON TOP BOLT SW.
LEG OF S11 Trk. LT.
ELEV. 5917.57

NE 1/4 SEC. 34
T14S, R66W

B.M. No. 20 131+40
NUT ON TOP BOLT SW. LEG S11 Trk. RT.
ELEV. 5898.60

SE 1/4 SEC. 34
T14S, R66W

B.M. No. 21 137+82
Nail in P.P. 96' LT.
ELEV. 5891.89

B.M. No. 22 145+00
Nail in P.P. 96' LT.
ELEV. 5891.08

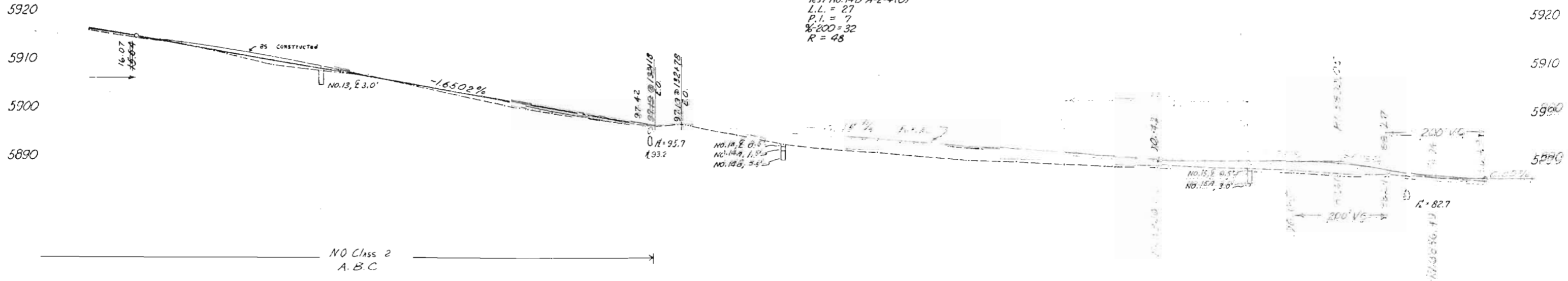
Test No. 13 A-2-4(O) Similar to No. 10
No. 10 A-2-4(O)
L.L. = NV
P.I. = NP
%200 = 11
R = 77

Test No. 14 A-1-a(O)
L.L. = 21
P.I. = 3
%200 = 12
R = 73

Test No. 14A A-2-4(O) Similar to No. 10A
No. 10A A-2-4(O)
L.L. = NV
P.I. = NP
%200 = 17
R = 77

Test No. 14B A-2-4(O)
L.L. = 27
P.I. = 7
%200 = 32
R = 48

Test No. 15 A-1-a(O) Similar to No. 14
Test No. 15A A-2-4(O) Similar to No. 10A



120 125 130 135 140 145 150