

FED. ROAD DIST. NO.	STATE	S.P.S. PROJ. NO.	SH. N.
3	COLO.	12-265-500	1

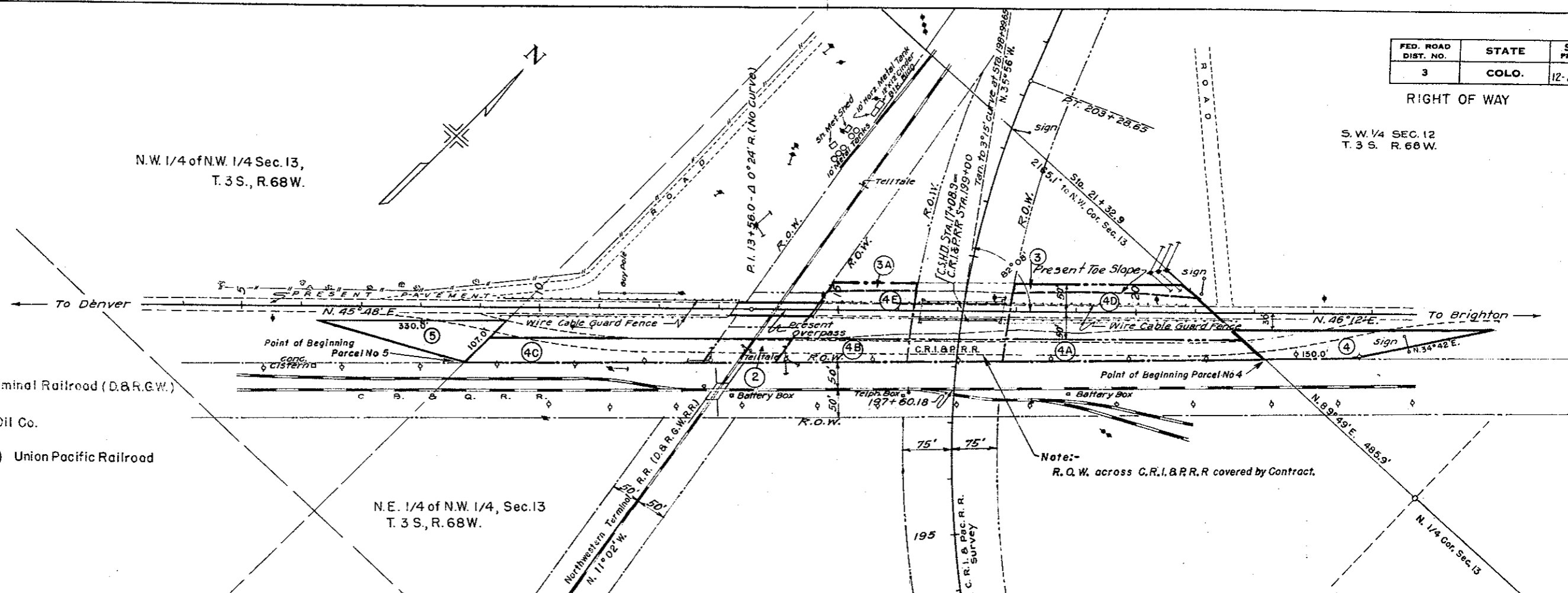
RIGHT OF WAY

S.W. 1/4 SEC. 12  
T. 3 S. R. 68 W.

N.W. 1/4 of N.W. 1/4 Sec. 13,  
T. 3 S., R. 68 W.

N.E. 1/4 of N.W. 1/4, Sec. 13  
T. 3 S., R. 68 W.

- ② Northwestern Terminal Railroad (D.&R.G.W.)
- ③ ③A Continental Oil Co.
- ④ ④A ④B ④C ④D ④E Union Pacific Railroad
- ⑤ Theresa Sigman  
Ida Sigman  
Fannie Sigman



Note:-  
R.O.W. across C.R.I.&B.R.R. covered by Contract.

