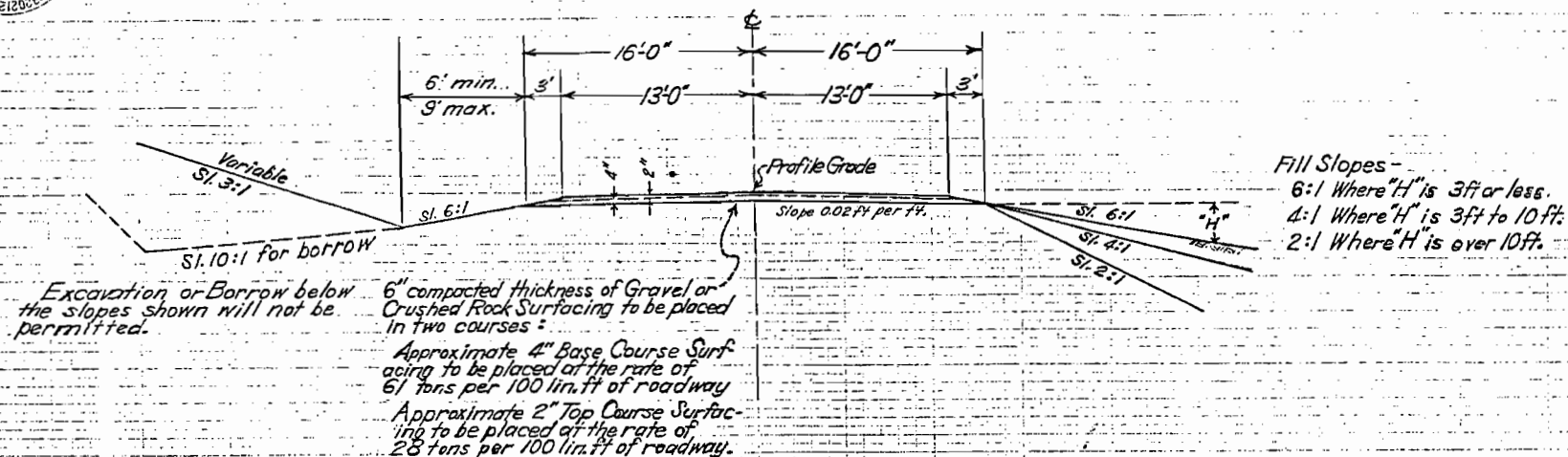


TYPICAL CROSS SECTION OF IMPROVEMENT AND SUMMARY OF QUANTITIES

Revision of Highway #9
Around Kremmling Airport
Rev. 6-12-47 for Proj. Line.



TYPICAL SECTION



SUMMARY OF APPROXIMATE QUANTITIES

ITEM NO.	DESCRIPTION	UNIT	ROADWAY TOTALS	PROJECT TOTALS
10a	Clearing & Grubbing Entire Project	Lump Sum	.	.
11b	Removing 3 Structures	Lump Sum	.	.
12a	Removing Fence	Lin. Ft.	3030	3030
13c	Unclassified Excavation	Cu. Yds.	30,400	30,400
13d	Unclassified Ditch Excavation	Cu. Yds.	225	225
14a	Dry Rock Excavation (Structural)	Cu. Yds.	6	6
14b	Dry Common Excavation (Structural)	Cu. Yds.	61	61
14c	Wet Rock Excavation (Structural)	Cu. Yds.	61	61
14d	Wet Common Excavation (Structural)	Cu. Yds.	1	1
16a	Station Yard Overhaul	Sta. Yds.	104,000	104,000
18b	Yard Mile Overhaul	Yd. Mi.	600	600
20a	Gravel or Crushed Rock Surfacing	Tons	6024	6024
46b	Class B Concrete	Cu. Yds.	825	825
53c	24" Corrugated Metal Culvert Pipe	Lin. Ft.	274	274
76a	24" Corrugated Metal Pipe Arch Culvert	Lin. Ft.	84	84
76b	Barbed Wire Fence with Treated Wood Posts	Lin. Ft.	4585	4585
76c	Barbed Wire Gates	Each	4	4
81a	Project Markers	Each	1	1
81b	Right of Way Markers	Each	2	2
96b	24" Standard Metal Aprons for C.M.P. Arch Culvert	Each	190	190
12x	Remove and Reset Wire Cable Guard Fence	Lin. Ft.	190	190
12y	Remove and Reset Timber Guard Posts	Each	14	14

LIST OF STRUCTURES

STATION TO STATION	DESCRIPTION	REMOVE	EXCAVATION	STRUCTURAL	EXCAVATION	UNCL.	CONCRETE	CORRUGATED METAL		MISCELLANEOUS
		STRU.	GU. YD.	CU. YD.	CU. YD.	DITCH EXCAV.	CU. YD.	CL. "A"	CL. "B"	
0+50	1- Proj. Marker									1- Proj. Marker
4+50	Cross Culvert Arch type				9.0				42	1- Arch type "L" Hd w/ll.
7+00	Cross Culvert Arch type				4.0				42	1- Arch type "L" Hd w/ll.
15+50	Cross Culvert & Out. ditch				15.0	5	1.65	58		
21+00	Cross Culvert & Out. ditch				8.0	5	1.65	58		
33+67	Cross Culvert & Out. ditch				13.0	5	1.65	58		
33+77	Remove 18" x 24" C.M.P. on left	1			14.0	5	1.65	58		
42+50	Cross Culvert & Inlet ditch									
42+70	Remove 18" x 36" C.M.P. on left	1								
50+00	Cross Culvert & Outlet ditch				12.0	5	1.65	58		
50+50	Kept Drain diversion ditch 175 ft					200				
61+50	Remove 18" x 48" C.M.P. Left	1								
61+80	Remove 18" x 48" C.M.P. Left	1								
64+75 to 64+25.5	Move & Reset 14 10r Guard Posts									Move & Reset 14 Guard Posts
64+25.5 to 65+15.5	Move & Reset 190 Lin. Ft. Wire Cable Guard Fence Rt. & Lt.									Move & Reset 190 Lin. Ft. Wire Cable Guard Fence Rt. & Lt.
Totals		3			75.0	225	825	274	84	

*It is estimated that Structural Excavation is 90% Common, and 10% rock, of which 90% is dry and 10% is wet.

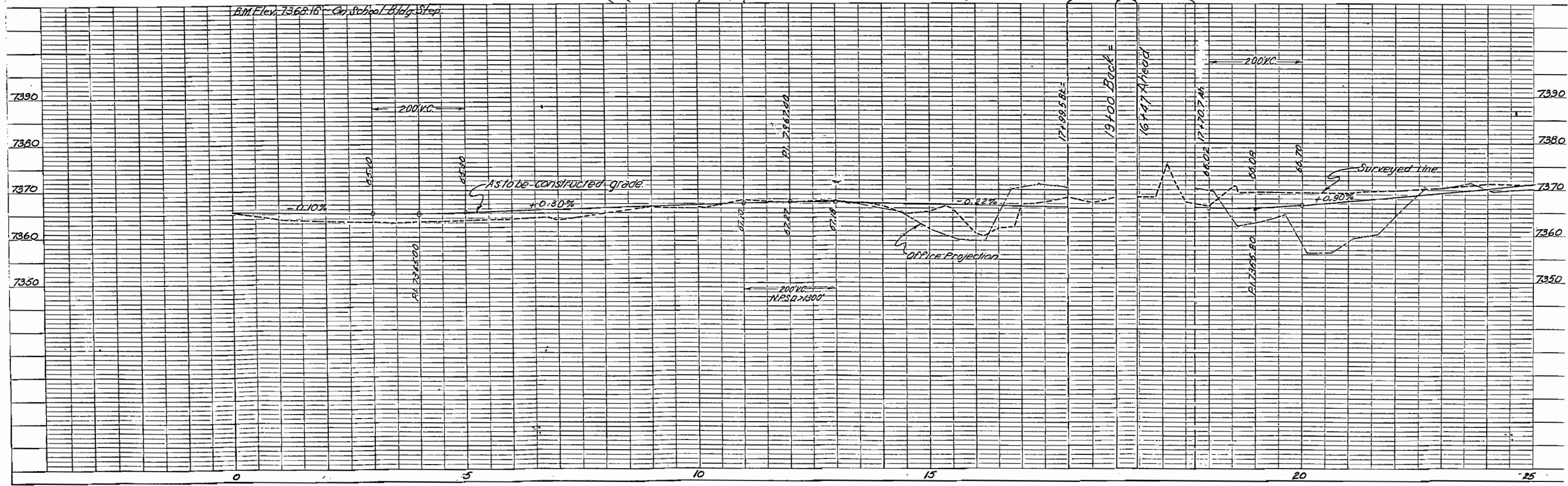
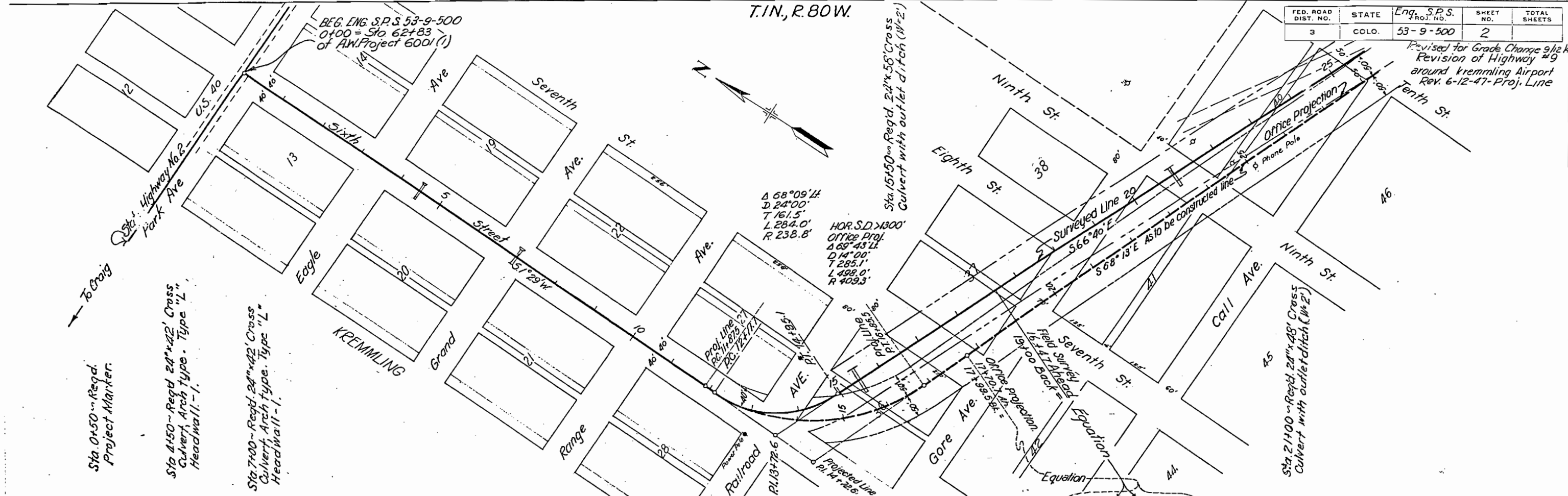
FENCING REQUIREMENTS

STATION TO STATION	SIDE	REMOVE	REMOVE & REBUILD FENCE		GATES NO.
		FENCE	BARBED WIRE	COMB. WIRE	
29+25 to 42+00	Lt.	1280			
29+25 to 42+00	Lt.		1280		
31+50	Lt.				1
38+00	Rt.				1
39+70 to 44+50	X-Fen.	1040			
39+70 to 61+30	Rt.		2160		
53+70 to 60+50	Lt.	710			
53+70 to 65+15.5	Lt.		1145		
54+50	Rt. & Lt.				2
Totals		3030	4585		4

FED. ROAD DIST. NO.	STATE	Eng. S.P.S. PROJ. NO.	SHEET NO.	TOTAL SHEETS
3	COLO.	53-9-500	2	

Revised for Grade Change 9/12/48
Revision of Highway #9
around Kremmling Airport
Rev. 6-12-47- Proj. Line

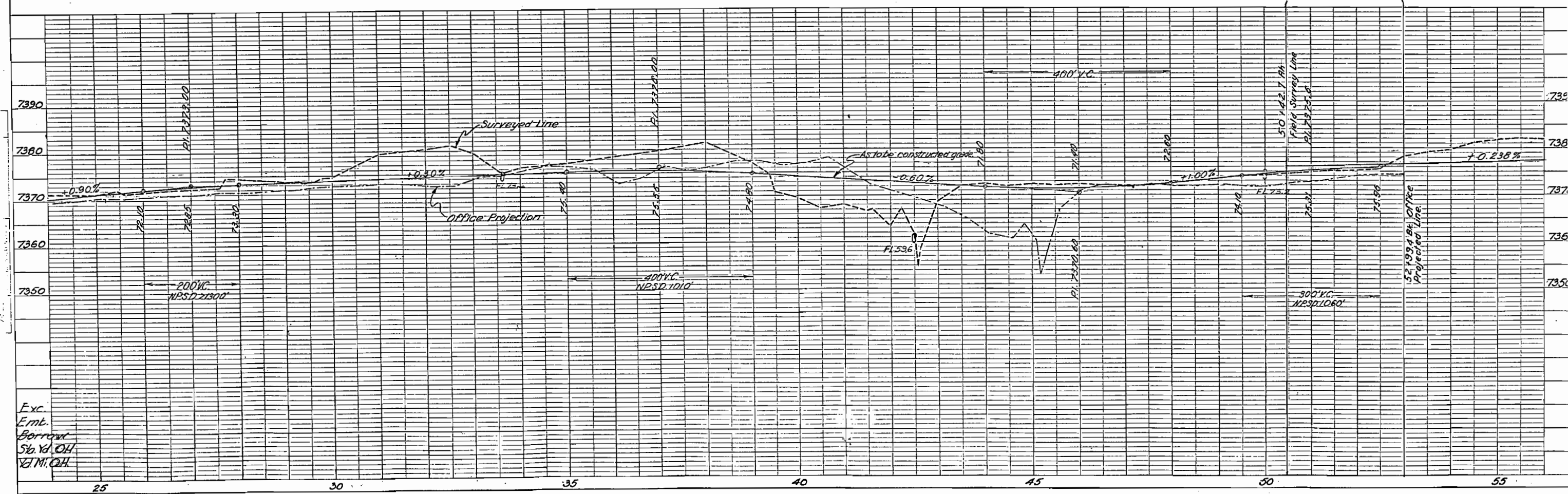
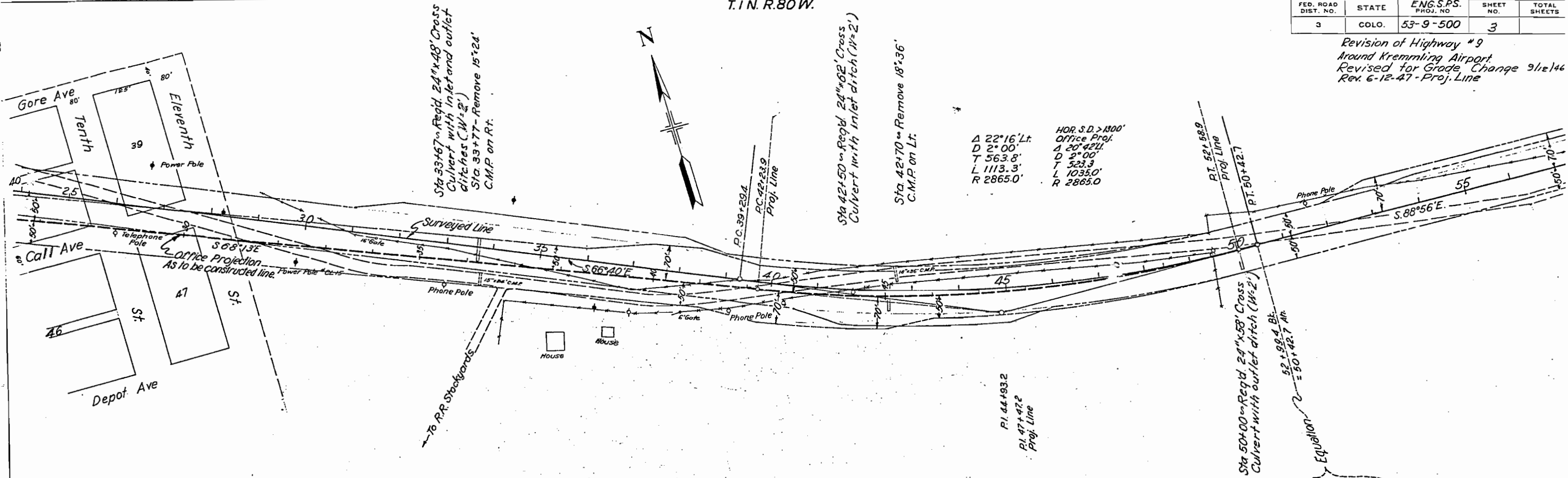
T.I.N., R. 80W.



T. I. N. R. 80 W.

FED. ROAD DIST. NO.	STATE	ENG. S.P.S. PROJ. NO.	SHEET NO.	TOTAL SHEETS
3	COLO.	53-9-500	3	

Revision of Highway #9
 Around Kremmling Airport
 Revised for Grade Change 9/12/46
 Rev. 6-12-47 - Proj. Line



FED. ROAD DIST. NO.	STATE	Eng. S.P.S. PROJ. NO.	SHEET NO.	TOTAL SHEETS
3	COLO.	53-9-500	4	

Revision of Highway #9
 Around Kremmling Airport
 Revised for Grade Change 9/12/46
 Rev. 6-12-47 - Proj. Line

T 1 N., R 80 W.

