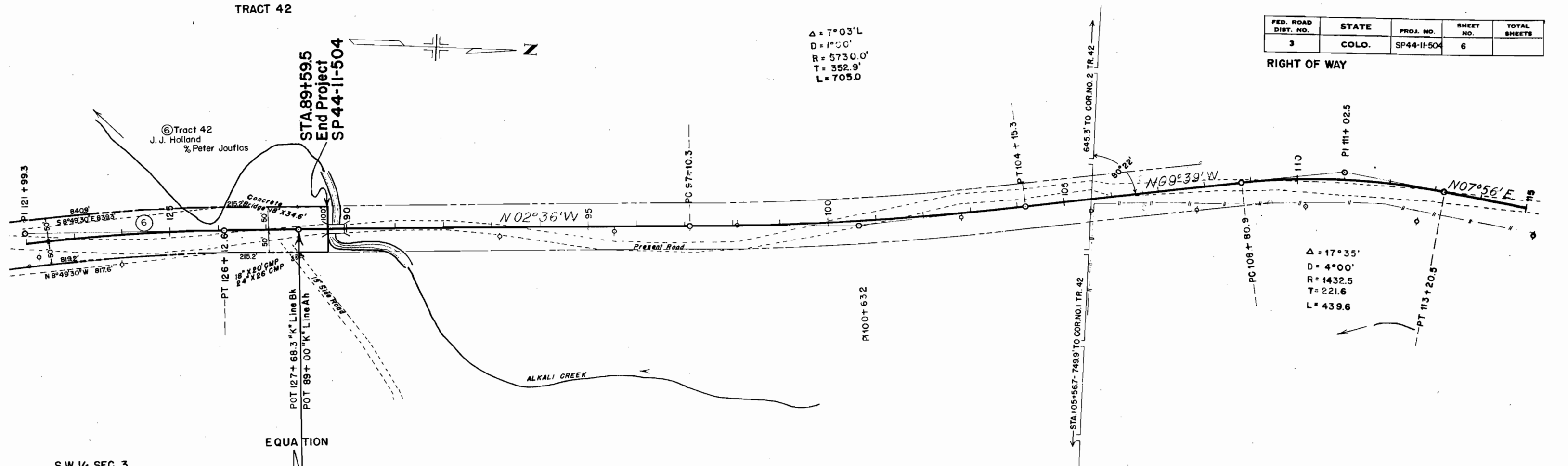


FED. ROAD DIST. NO.	STATE	PROJ. NO.	SHEET NO.	TOTAL SHEETS
3	COLO.	SP44-II-504	6	

RIGHT OF WAY

$\Delta = 7^{\circ}03' L$
 $D = 1^{\circ}00'$
 $R = 5730.0'$
 $T = 352.9'$
 $L = 705.0'$

$\Delta = 17^{\circ}35'$
 $D = 4^{\circ}00'$
 $R = 1432.5'$
 $T = 221.6'$
 $L = 439.6'$



S.W. 1/4 SEC. 3
 T.4 S. R.83 W.

EQUATION



2
 V. FACTOR
 V.
 M X FACTOR
 ANK.
 YD. O.H.
 I. O.H.
 ROW
 ROW SOURCE