

W 1/4 Sec. 8
T. 7 N., R. 51 W.

NE 1/4 Sec. 7
T. 7 N., R. 51 W.

AS CONSTRUCTED		
NO REVISIONS	REVISED 11 JUN 90	VOR

PROJECT	DATE	BY	CHKD	APPD
SR 0061 (4)	11 JUN 90			

2430

2440

2445

2450

2455

2460

NE Corner Section 7 = 0.30' Lt
STA 2435+01.87 (Surv.)

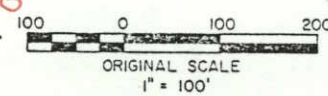
Surv. & Proj.
Δ = 23° 50' Rt.
D = 4° 00'
T = 302.29'
L = 595.83'
R = 1432.39'
E = 31.55'
e = 0.079' / FT
M.D.S. = 65 M.P.H.
H.S.S.D. = > 625'

Sta. 2440+30
Placed Field Approach R.
(W = 1/6', R = 20')
PT. 2441+36.44 (Proj.)
Tel. ped. 2 steel posts

SECTION LINE
12' BW gate
12' steel tube gate
P.C. 2435+40.61 (Proj.)
S.T.A. 2435+00.00
S.T.E. 2435+00.00
S.T.F. 2435+00.00
S.T.G. 2435+00.00
S.T.H. 2435+00.00
S.T.I. 2435+00.00
S.T.J. 2435+00.00
S.T.K. 2435+00.00
S.T.L. 2435+00.00
S.T.M. 2435+00.00
S.T.N. 2435+00.00
S.T.O. 2435+00.00
S.T.P. 2435+00.00
S.T.Q. 2435+00.00
S.T.R. 2435+00.00
S.T.S. 2435+00.00
S.T.T. 2435+00.00
S.T.U. 2435+00.00
S.T.V. 2435+00.00
S.T.W. 2435+00.00
S.T.X. 2435+00.00
S.T.Y. 2435+00.00
S.T.Z. 2435+00.00
S.T.A. 2435+00.00
S.T.B. 2435+00.00
S.T.C. 2435+00.00
S.T.D. 2435+00.00
S.T.E. 2435+00.00
S.T.F. 2435+00.00
S.T.G. 2435+00.00
S.T.H. 2435+00.00
S.T.I. 2435+00.00
S.T.J. 2435+00.00
S.T.K. 2435+00.00
S.T.L. 2435+00.00
S.T.M. 2435+00.00
S.T.N. 2435+00.00
S.T.O. 2435+00.00
S.T.P. 2435+00.00
S.T.Q. 2435+00.00
S.T.R. 2435+00.00
S.T.S. 2435+00.00
S.T.T. 2435+00.00
S.T.U. 2435+00.00
S.T.V. 2435+00.00
S.T.W. 2435+00.00
S.T.X. 2435+00.00
S.T.Y. 2435+00.00
S.T.Z. 2435+00.00

W 1/4 Sec. 8
T. 7 N., R. 51 W.

SE 1/4 Sec. 7
T. 7 N., R. 51 W.



B.M. 41 4187.70
H & G 65' Lt. 2432+80

B.M. 40 4197.12
H & G 65' Lt. 2437+65

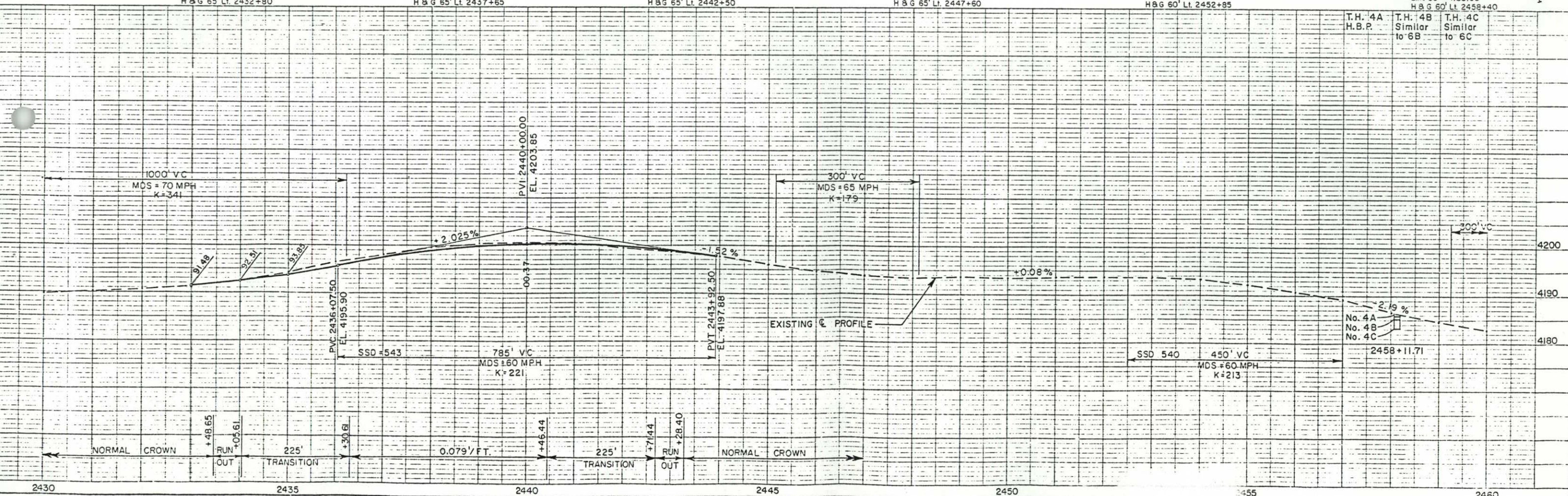
B.M. 39 4190.40
H & G 65' Lt. 2442+50

B.M. 38 4186.09
H & G 65' Lt. 2447+60

B.M. 37 4194.04
H & G 60' Lt. 2452+85

B.M. 36 4183.05
H & G 60' Lt. 2458+40

T.H. 4A
H.B.P.
T.H. 4B
Similar to 6B
T.H. 4C
Similar to 6C



2460

2465

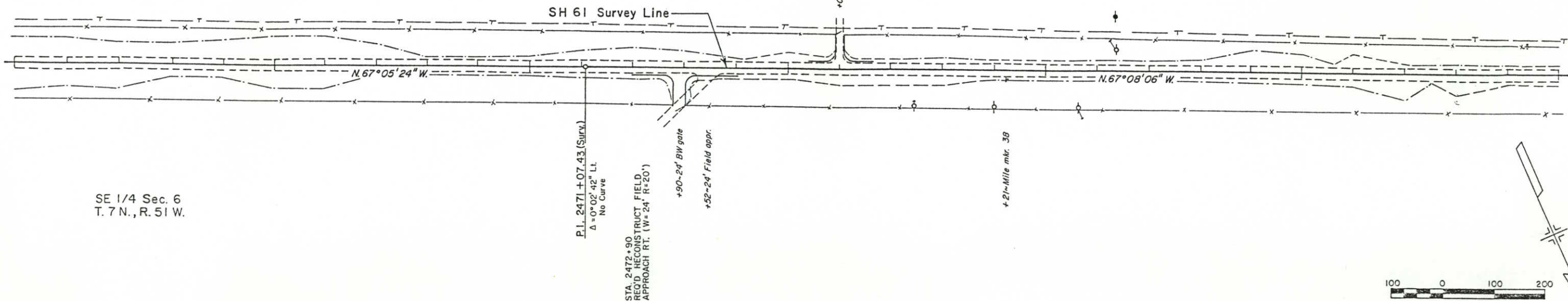
2470

2475

2480

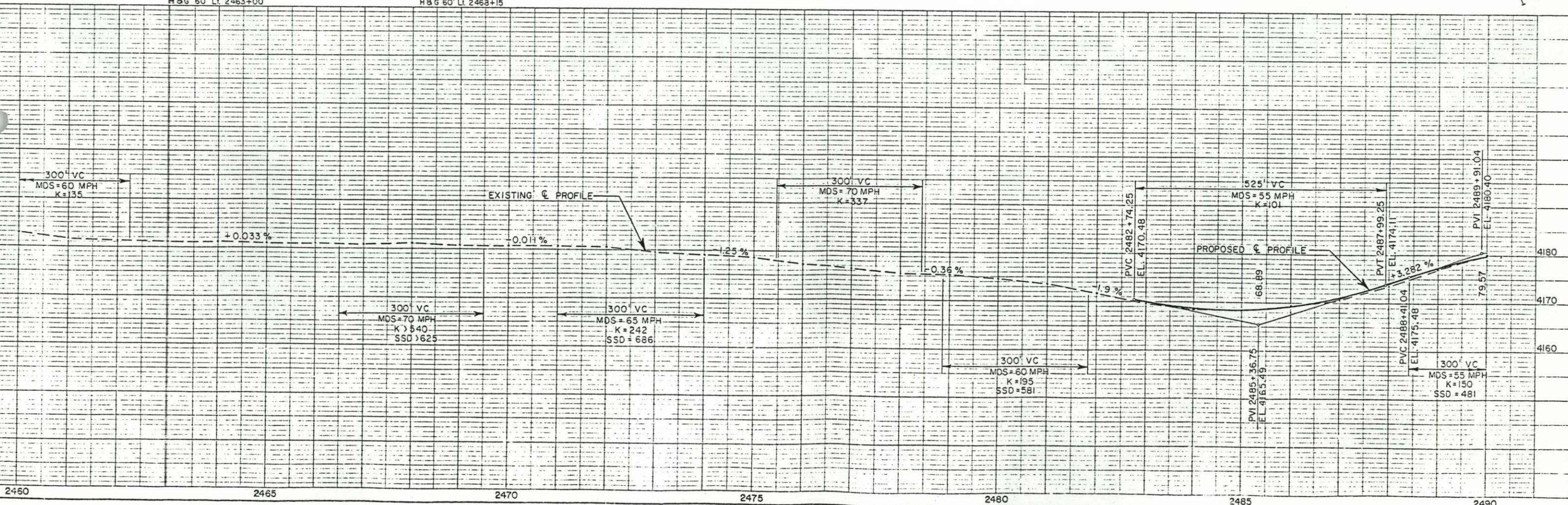
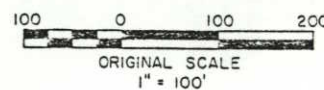
2485

2490



B.M. 35 4175.49
H&G 60' Lt. 2463+00

B.M. 34 4178.43
H&G 60' Lt. 2463+15



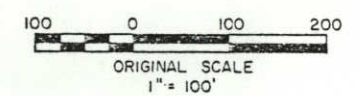
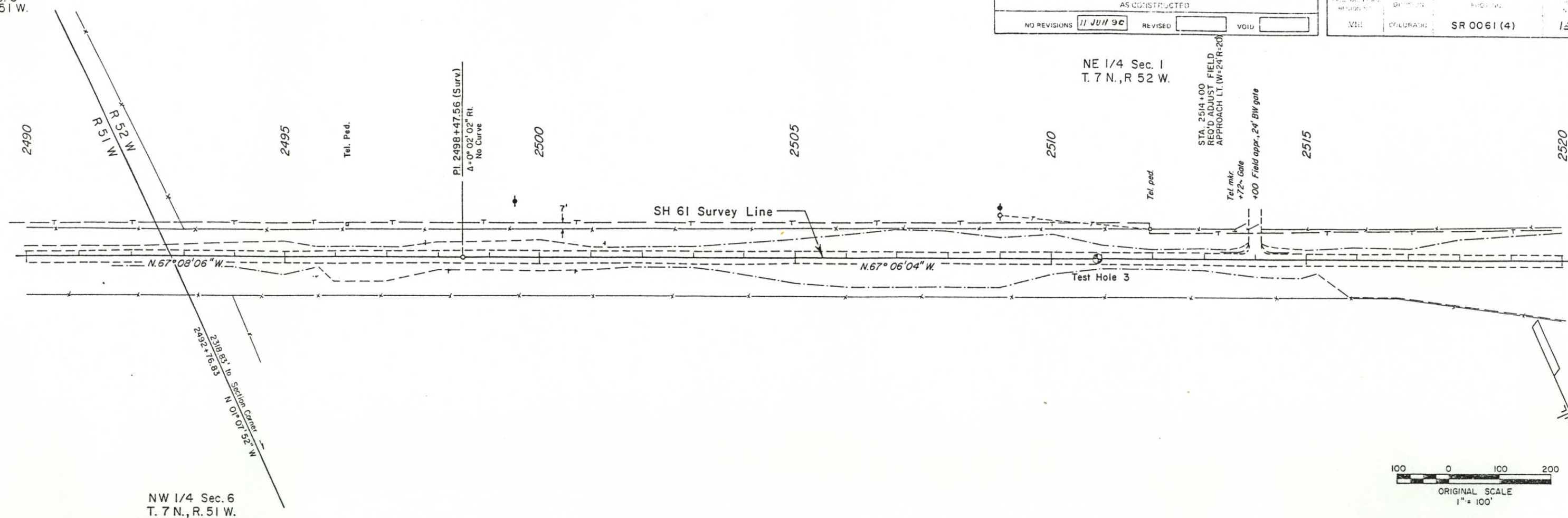
1/4 Sec. 6
N., R. 51 W.

AS CONSTRUCTED		
NO REVISIONS	11 JUN 96	REVISED
		VOID

PROJECT	DATE	BY	NO.
SR 0061 (4)	15		

NE 1/4 Sec. 1
T. 7 N., R. 52 W.

STA. 2514+00 FIELD
REQ'D ADJUST FIELD
APPROACH LT. (W-24 R-20)
Tel mkr
+72~ Gate
+00 Field appr., 24' BW gate



NW 1/4 Sec. 6
T. 7 N., R. 51 W.

T.H. 3A
H.B.P.
T.H. 3B
Similar
to 6B
T.H. 3C
Similar
to 6C

