



R.O.W. TABULATION OF PROPERTIES IN JEFFERSON COUNTY S.H. NO. 72 & 93 RIGHT OF WAY INTERCHANGE S.H. 72 & S.H. 93

PARCEL NO.	OWNER	ADDRESS	LOCATION	AREA IN SQ. FT.				PARCEL NO.	REMARKS	REVISIONS		
				PARCEL	TO BE ACQUIRED	REMAINDER				07/08/87	NAME	CORRECTION
			T.2S., R.70W., 6TH P.M.			LEFT	RIGHT					
I	PERRY S. MCKAY	C/O FIARFIELD AND WOODS 1600 COLORADO NATIONAL BANK BUILDING DENVER, CO 80202	NW 1/4 SEC. 21	8,118	8,118	1029.17 ACRES	--	1	ACQUIRED BY CDOH Receipt # 88049628 Recorded 5-23-88 + Access RIGHTS 88049629 5-23-88	--	ON 1'S, LOCATION CORRECTION	-- -- --
1A	SEE PARCEL 1		NW 1/4 SEC. 21	14,487	14,487	SEE PARCEL 1		1A				
1B	SEE PARCEL 1		NW 1/4 SEC. 21	13,590	13,590	SEE PARCEL 1		1B				
1C	SEE PARCEL 1		NW 1/4 SEC. 21	11,855	11,855	--	5.73 ACRES	1C				
PE-1	SEE PARCEL 1		NW 1/4 SEC. 21	750	750	SEE PARCEL 1		PE-1	FOR CONSTRUCTION OF DRAINAGE AND FACILITY.	ACQUIRED BY CDOH RECEPTION NO. 88049630 Recorded 5-23-88		
2	JOHN B. BOYLE and CHARLINE D. BOYLE, as joint tenants	24230 HWY 72 GOLDEN, CO 80401	W 1/2 SEC. 21	14,843	14,843	16 ACRES	1475 ACRES	2	ACQUIRED BY CDOH RECEPT. # 88013178 Recorded 2-11-88			
AC-2	SEE PARCEL 2		NE 1/4 SEC. 20	--	--	--	--	AC-2	ACCESS ONLY	ACQUIRED BY CDOH RECEPT. # 88013179 Recorded 2-11-88		
3	JEWEL MOUNTAIN LAND COMPANY, a Colorado Corporation		NE 1/4, SEC. 20	6,711	6,711	1030 ACRES	--	3	ACCESS RIGHTS	Receipt # 87145795 Rec. 12-7-87		
										Receipt # 87145796 Rec. 12-7-87		

FEDERAL ROAD REGION NO.	DIVISION	PROJ. NO.	SHEET NO.	TOTAL SHEETS
VIII	COLORADO	SR 0072 (19)	3	

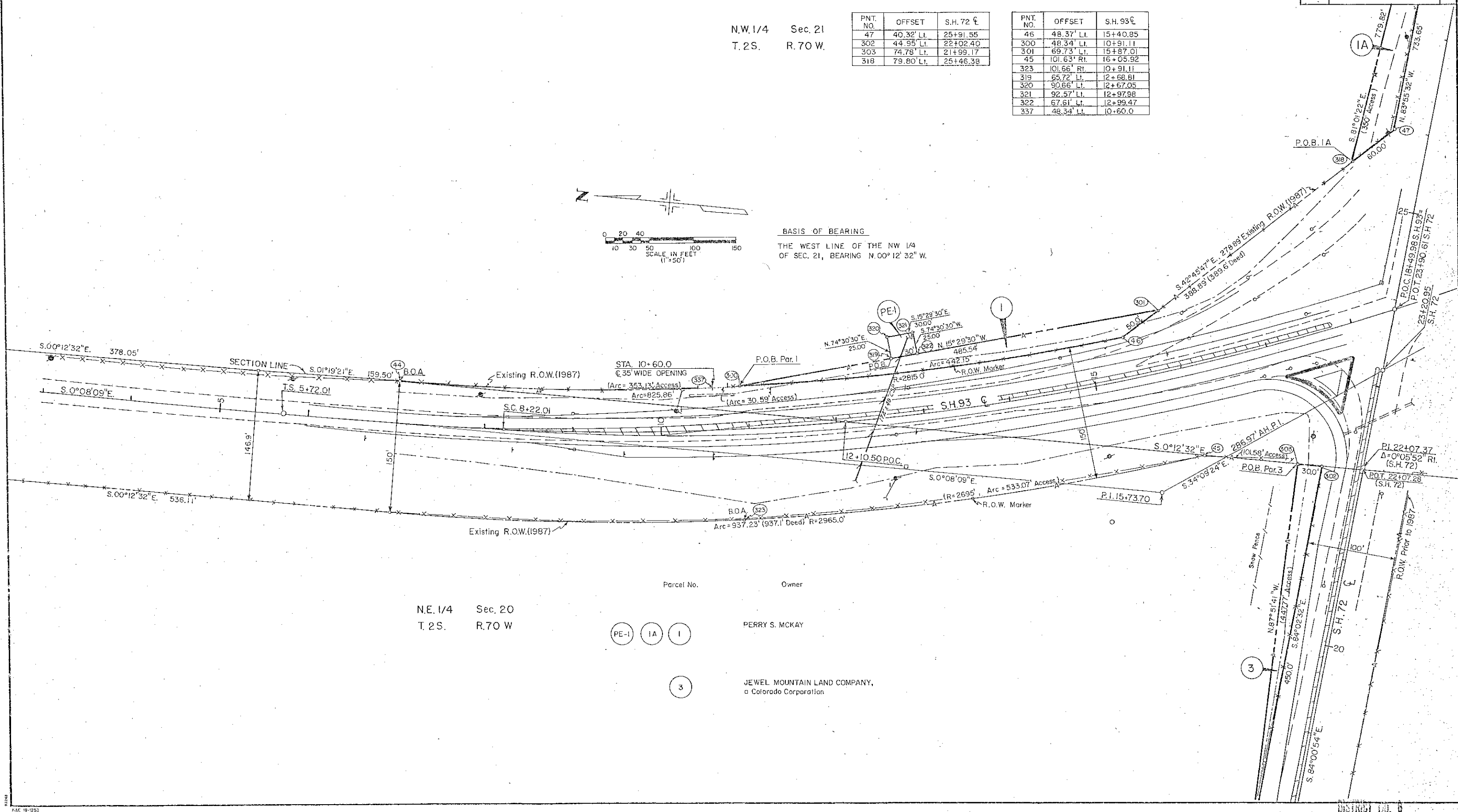
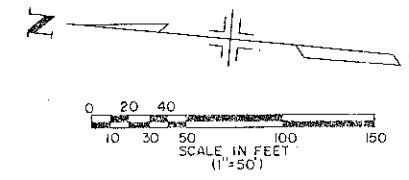
REVISIONS			
7/8/87	Name correction on I's		D6
3-18-88	Revise access to Par. I B. IA		D-6
6/3/88	Chg. wording of Access Note		D6

**RIGHT OF WAY INTERCHANGE**  
S.H.72 & S.H.93

N.W. 1/4 Sec. 21  
T. 2S. R. 70 W.

PNT. NO.	OFFSET	S.H. 72
47	40.32' Lt.	25+91.55
302	44.95' Lt.	22+02.40
303	74.78' Lt.	21+99.17
318	79.80' Lt.	25+46.38

PNT. NO.	OFFSET	S.H. 93
46	48.37' Lt.	15+40.85
300	48.34' Lt.	10+91.11
301	69.73' Lt.	15+87.01
45	101.63' Rt.	16+05.92
323	101.66' Rt.	10+91.11
319	65.72' Lt.	12+68.81
320	90.66' Lt.	12+67.05
321	92.57' Lt.	12+97.98
322	67.61' Lt.	12+99.47
337	48.34' Lt.	10+60.0

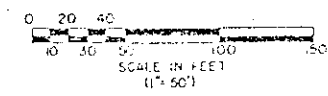


NE. 1/4 Sec. 20  
T. 2S. R. 70 W.

Parcel No.	Owner
PE-1	
IA	
I	
3	PERRY S. MCKAY
	JEWEL MOUNTAIN LAND COMPANY, a Colorado Corporation

REVISIONS		
7/8/87	Name correction on I's	CG
3-18-88	Rev. Access to Par. I B I-A	DE

**RIGHT OF WAY INTERCHANGE S.H.72 & S.H.93**



BASIS OF BEARING.  
THE WEST LINE OF THE NW 1/4 OF SEC 21, BEARING N 01° 17' 30" W

**PI. 4+12.52 Curve Data**  
 $\Delta = 19^\circ 23' 14.5''$   
 $D = 17^\circ 28' 38.2''$   
 $T = 56.0'$   
 $L = 110.93'$   
 $R = 327.83'$

**PI. 1+49 Curve Data**  
 $\Delta = 45^\circ 50' 26.8''$   
 $D = 16^\circ 15' 34.8''$   
 $T = 149.00'$   
 $L = 281.93'$   
 $R = 352.38'$

**PI. 15+73.70 (S.H.93)**  
 $\Delta = 34^\circ 01' 15''$  Lt.  
 $T = 1001.69'$   
 $\Delta c = 29^\circ 01' 15''$   
 $D = 2^\circ 00' 00''$   
 $Lc = 1451.04'$   
 $R = 2864.79'$   
 $Ls = 250.0'$   
 $\Theta = 2^\circ 30'$   
 $LT = 166.68'$   
 $ST = 83.35'$

NE 1/4 Sec. 20  
T.2.S. R.70W.

NW 1/4 Sec. 21  
T.2.S. R.70W.

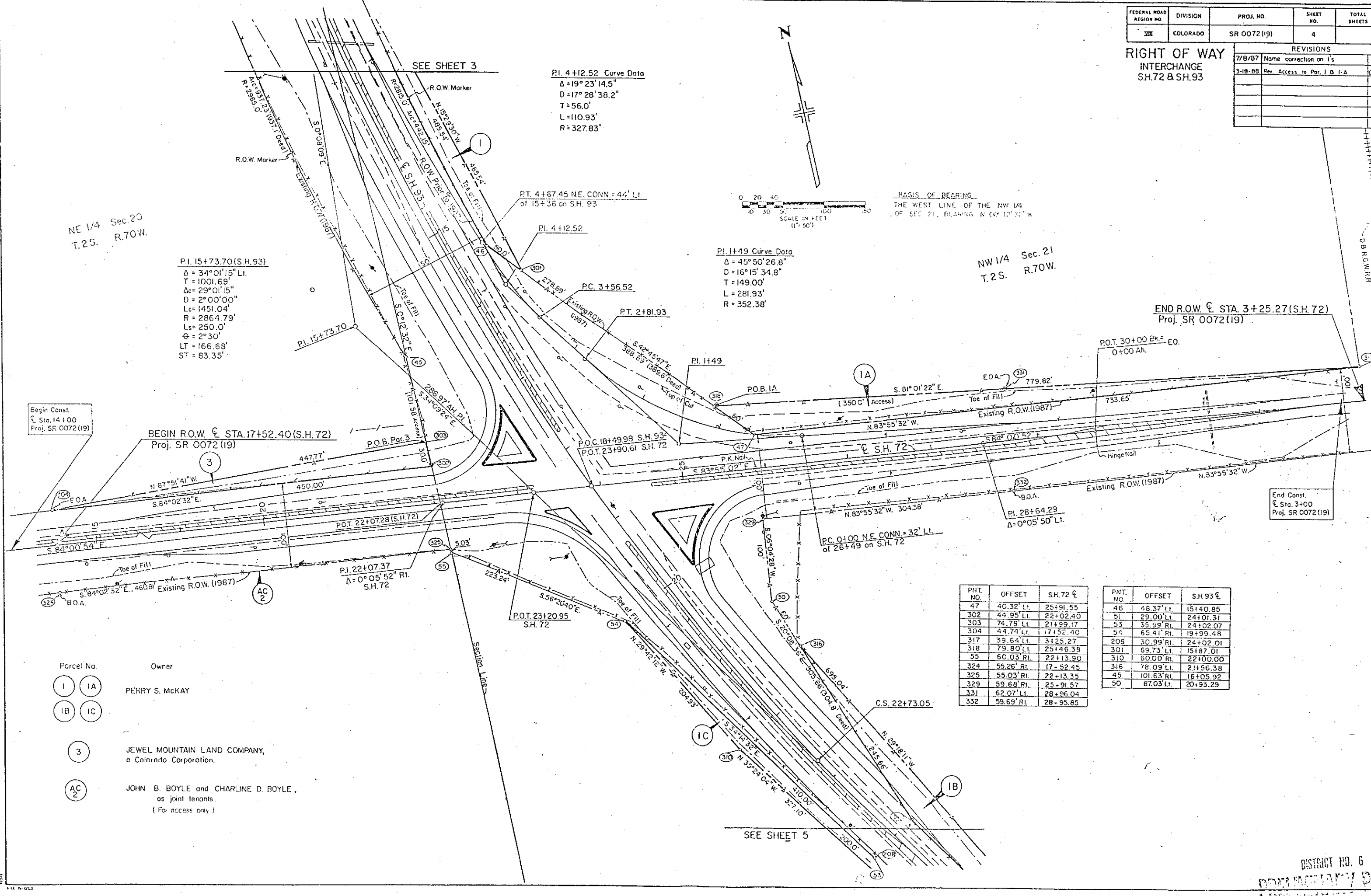
END R.O.W. @ STA. 3+25.27 (S.H. 72)  
Proj. SR 0072 (19)

Begin Const.  
@ Sta. 14+00  
Proj. SR 0072 (19)

End Const.  
@ Sta. 3+00  
Proj. SR 0072 (19)

PNT. NO.	OFFSET	S.H. 72 €	PNT. NO.	OFFSET	S.H. 93 €
47	40.32' Lt.	25+91.55	46	48.37' Lt.	15+40.85
302	44.95' Lt.	22+02.40	51	29.00' Lt.	24+01.31
303	74.78' Lt.	21+99.17	53	35.99' Rt.	24+02.07
304	44.74' Lt.	17+52.40	54	65.41' Rt.	19+99.48
317	39.64' Lt.	3+25.27	208	30.99' Rt.	24+02.01
318	79.80' Lt.	25+46.38	301	69.73' Lt.	15+87.01
55	60.03' Rt.	22+13.90	310	60.00' Rt.	22+00.00
324	55.26' Rt.	17+52.45	316	78.09' Lt.	21+56.38
325	55.03' Rt.	22+13.35	45	101.63' Rt.	16+05.92
329	59.68' Rt.	25+91.57	50	87.03' Lt.	20+93.29
331	62.07' Lt.	28+96.04			
332	59.69' Rt.	28+95.85			

Parcel No.	Owner
1, IA, IB, IC	PERRY S. MCKAY
3	JEWEL MOUNTAIN LAND COMPANY, a Colorado Corporation.
AC 2	JOHN B. BOYLE and CHARLINE D. BOYLE, as joint tenants. (For access only)



FEDERAL ROAD REGION NO.	DIVISION	PROJ. NO.	SHEET NO.	TOTAL SHEETS
VIII	COLORADO	SR 0072 (19)	5	

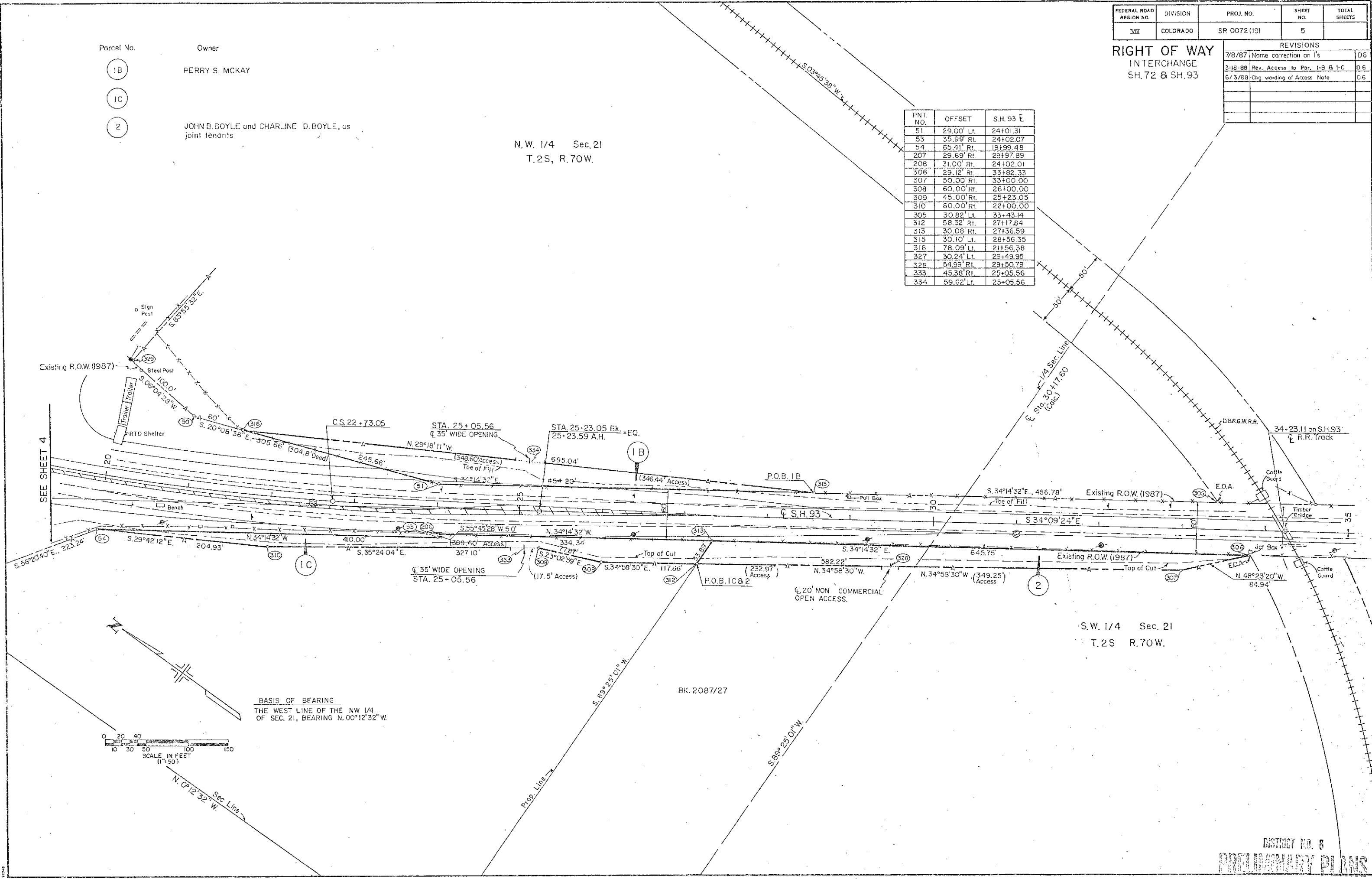
REVISIONS		
7/8/87	Name correction on I's	D6
3-18-88	Rev. Access to Par. 1-B & 1-C	D6
6/3/88	Chg wording of Access Note	D6

**RIGHT OF WAY  
INTERCHANGE  
SH. 72 & SH. 93**

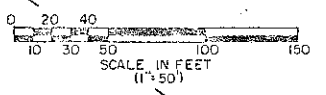
Parcel No.	Owner
IB	PERRY S. MCKAY
IC	
2	JOHN B. BOYLE and CHARLINE D. BOYLE, as joint tenants

N.W. 1/4 Sec. 21  
T. 2S, R. 70W.

PNT. NO.	OFFSET	S.H. 93 C
51	29.00' Lt.	24+01.31
53	35.99' Rt.	24+02.07
54	65.41' Rt.	19+99.48
207	29.69' Rt.	29+97.89
208	31.00' Rt.	24+02.01
306	29.12' Rt.	33+82.33
307	50.00' Rt.	33+00.00
308	60.00' Rt.	26+00.00
309	45.00' Rt.	25+23.05
310	60.00' Rt.	22+00.00
305	30.82' Lt.	33+43.14
312	58.32' Rt.	27+17.84
313	30.08' Rt.	27+36.59
315	30.10' Lt.	28+56.35
316	78.09' Lt.	21+56.38
327	30.24' Lt.	29+49.95
328	54.99' Rt.	29+50.79
333	45.38' Rt.	25+05.56
334	59.62' Lt.	25+05.56



BASIS OF BEARING  
THE WEST LINE OF THE NW 1/4  
OF SEC. 21, BEARING N. 00°12'32" W.



S.W. 1/4 Sec. 21  
T. 2S R. 70W.

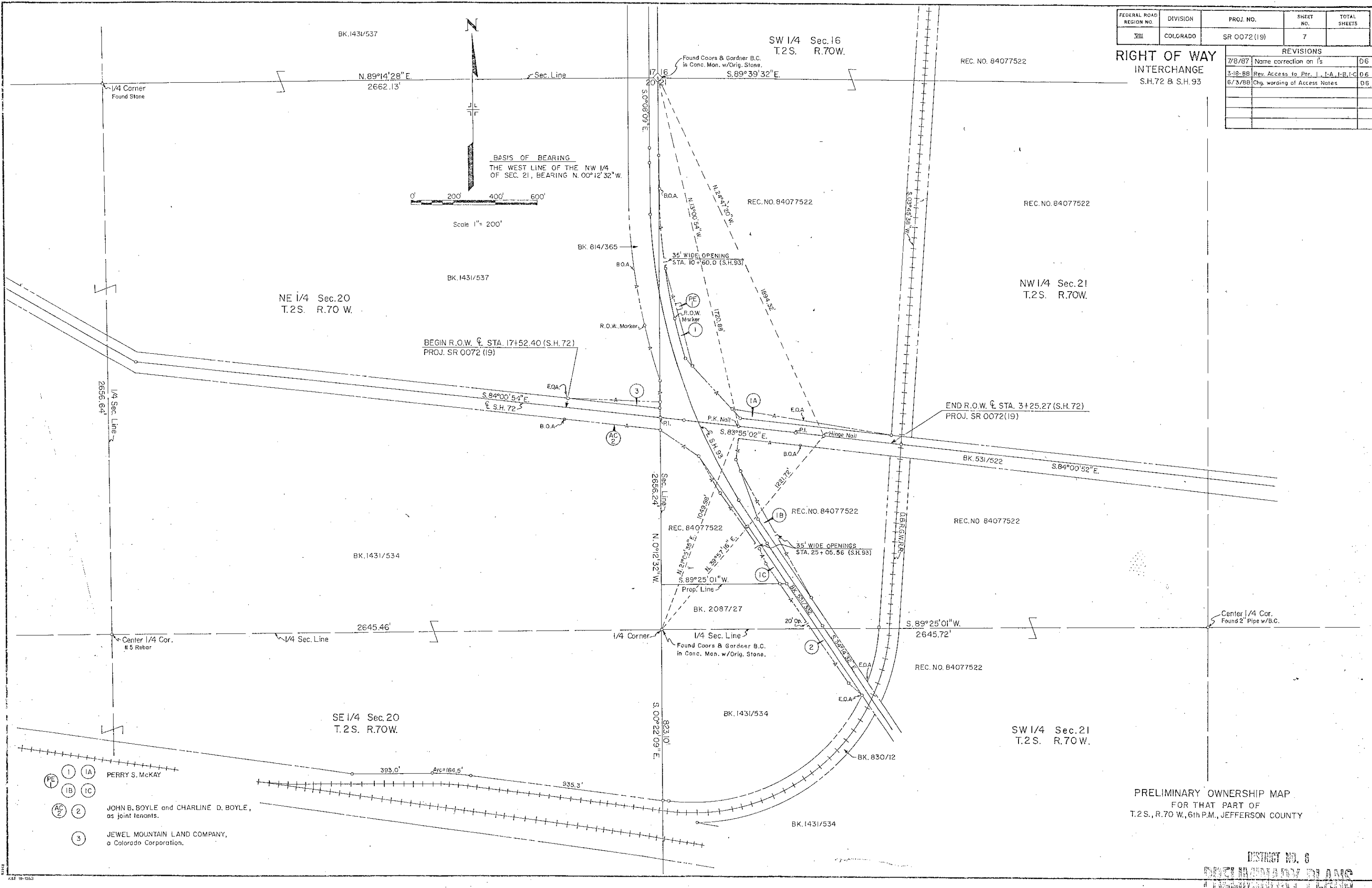
DISTRICT NO. 6  
**PRELIMINARY PLANS**  
SUBJECT TO CHANGES



FEDERAL ROAD REGION NO.	DIVISION	PROJ. NO.	SHEET NO.	TOTAL SHEETS
VIII	COLORADO	SR 0072 (19)	7	

REVISIONS		
7/8/87	Name correction on I's	D6
3/18/88	Rev. Access to Prop. I, I-A, I-B, I-C	D6
6/3/88	Chg. wording of Access Notes	D6

**RIGHT OF WAY INTERCHANGE**  
S.H.72 & S.H.93



PRELIMINARY OWNERSHIP MAP  
FOR THAT PART OF  
T.2S., R.70 W., 6th P.M., JEFFERSON COUNTY

DISTRICT NO. 6  
COUNTY CLERK  
JEFFERSON COUNTY, COLORADO