

STATE OF COLORADO
 STATE DEPARTMENT OF HIGHWAYS
 DIVISION OF HIGHWAYS
 D. H. H. FORM NO. 117
 REV. OCT. 1993

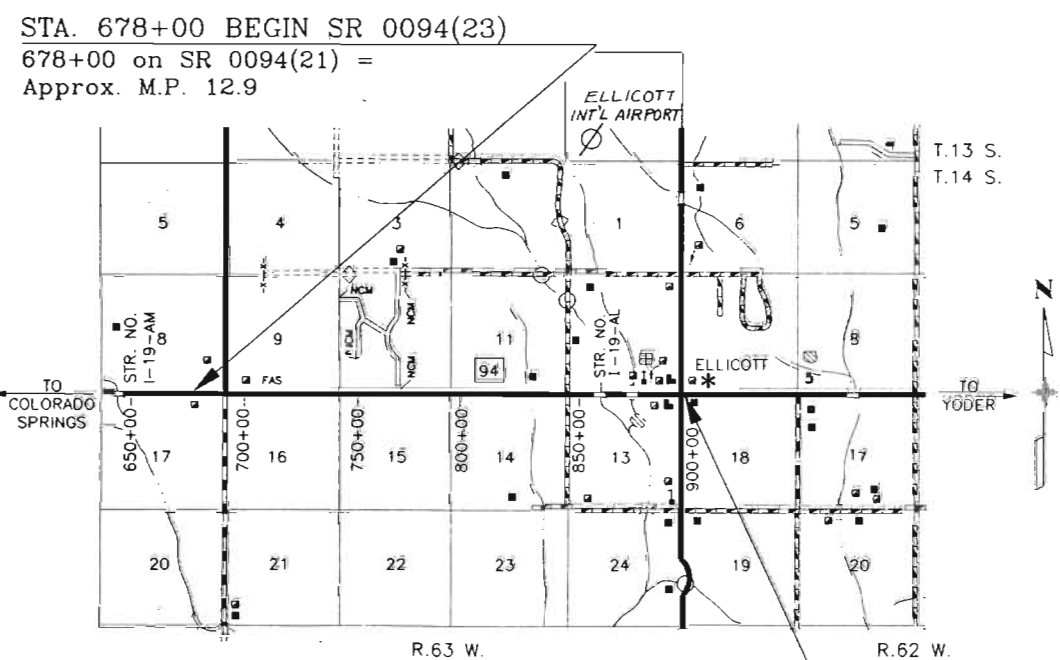
STATE DEPARTMENT OF HIGHWAYS DIVISION OF HIGHWAYS – STATE OF COLORADO

PLAN AND PROFILE OF PROPOSED FEDERAL AID PROJECT NO. SR 0094(23) STATE HIGHWAY NO. 94 EL PASO COUNTY

SCALES OF ORIGINAL DRAWINGS
 ON PLAN, 1 IN. = 100 FT.
 ON PROFILE { 1 IN. = 100 FT. HORIZONTAL
 1 IN. = 10 FT. VERTICAL

TABULATION OF LENGTH AND DESIGN DATA

STATION	ROADWAY LIN. FT.	
678+00 BEGIN SR 0094(23) 678+00 ON SR 0094(21) Approx. M.P. 12.9	22,100.00	
899+00 END SR 0094(23) 899+00 ON S0020(5) Approx. M.P. 17.1		
TOTALS	22,100.00	
SUMMARY		
	LIN. FT.	MILES
ROADWAY (NET LENGTH)	22,100.00	4.186
PROJECT GROSS LENGTH	22,100.00	4.186
DESIGN DATA		
MAXIMUM DEGREE OF CURVE	1°00'00"	
MAXIMUM GRADE	3.20%	
MINIMUM S.S.D. HORIZONTAL	>450'	
MINIMUM S.S.D. VERTICAL	>450'	
MAXIMUM DESIGN SPEED	55 mph	
1988 TRAFFIC VOLUME - ADT	1910	
DHV	270	
% TRUCKS	14	
2008 TRAFFIC VOLUME - ADT	3140	
DHV	440	
% TRUCKS	14	



STA. 899+00 END SR 0094(23)
 899+00 on S 0020(5) =
 Approx. M.P. 17.1



FED. ROAD DISTRICT	DIVISION	PROJECT NUMBER	SHEET NUMBER
VII	COLO.	SR 0094(23)	1
AS CONSTRUCTED			
NO REVISIONS <input type="checkbox"/> REVISED <input type="checkbox"/> VOID <input type="checkbox"/>			
REVISIONS			
1			
2			
3			

INDEX OF SHEETS

SHEET NO.	DESCRIPTION
1	TITLE SHEET
2	STANDARD PLANS SHEET
3	TYPICAL SECTION
4-5	SUMMARY OF APPROXIMATE QUANTITIES
6	GENERAL NOTES, SURFACING PLAN, SCHEDULE OF CONSTRUCTION TRAFFIC CONTROL DEVICES AND TABULATION OF GUARDRAIL
7	TABULATION OF RESET GROUND SIGN, TABULATION OF RESET MAILBOX AND NEWSPAPER BOX, PRECAST CBC AND WINGWALL PLAN, HEADWALL DETAIL
8	STRUCTURE QUANTITIES
9	SUMMARY OF EARTHWORK QUANTITIES, TABULATION OF ROAD APPROACHES, FIELD APPROACHES AND DRIVEWAYS
10-17	PLAN AND PROFILE SHEETS

DIVISION OF HIGHWAYS

APPROVED:

James E. Siebel 3-14-88
 Asst. CHIEF ENGINEER DATE

AS CONSTRUCTED INFORMATION

CONTRACTOR _____
PROJECT ENGINEER _____
RESIDENT ENGINEER _____
PROJECT STARTED _____
PROJECT COMPLETED _____
AS CONSTRUCTED PLANS APPROVED _____
TITLE _____ DATE _____

B.F.R.

02/28/88 19:30:24 NSP1::: (09000/DST1TL) SR94-2 88061 H102

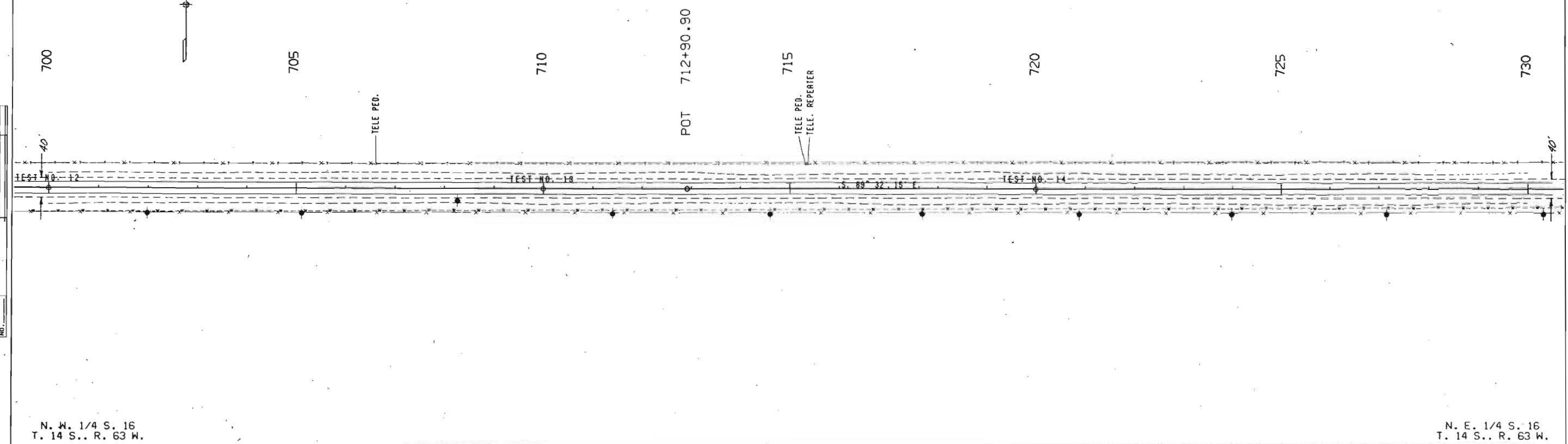
ALL INFORMATION CONTAINED HEREIN IS UNCLASSIFIED
DATE 08-14-2013 BY 60322 UCBAW/SJS

S. W. 1/4 S. 9
T. 14 S. R. 63 W.



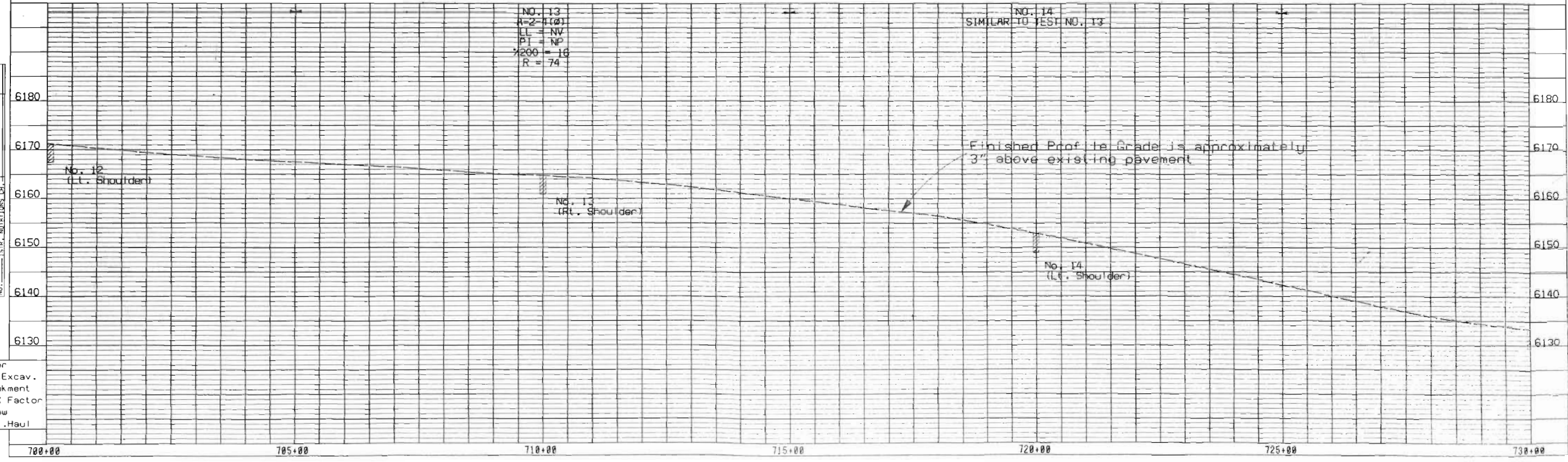
AS CONSTRUCTED			FED. ROAD REGION	DIVISION	PROJ. NO.	SHEET NO.	TOTAL SHEETS
NO REVISIONS	REVISED	VOID	VIII	COLO.	SR 0094(23)	11	

S. E. 1/4 S. 9
T. 14 S. R. 63 W.



N. W. 1/4 S. 16
T. 14 S. R. 63 W.

N. E. 1/4 S. 16
T. 14 S. R. 63 W.



PLAN	DATE
NO.	
NO.	
NO.	

PROF	DATE
NO.	
NO.	
NO.	

Factor
Uncl. Excav.
Embankment
Emb. X Factor
Borrow
YD. MI. Haul

02/29/88 15:31:08 NSP1:::(SMD/88061/PLANS) SH94SH2 88061 H102

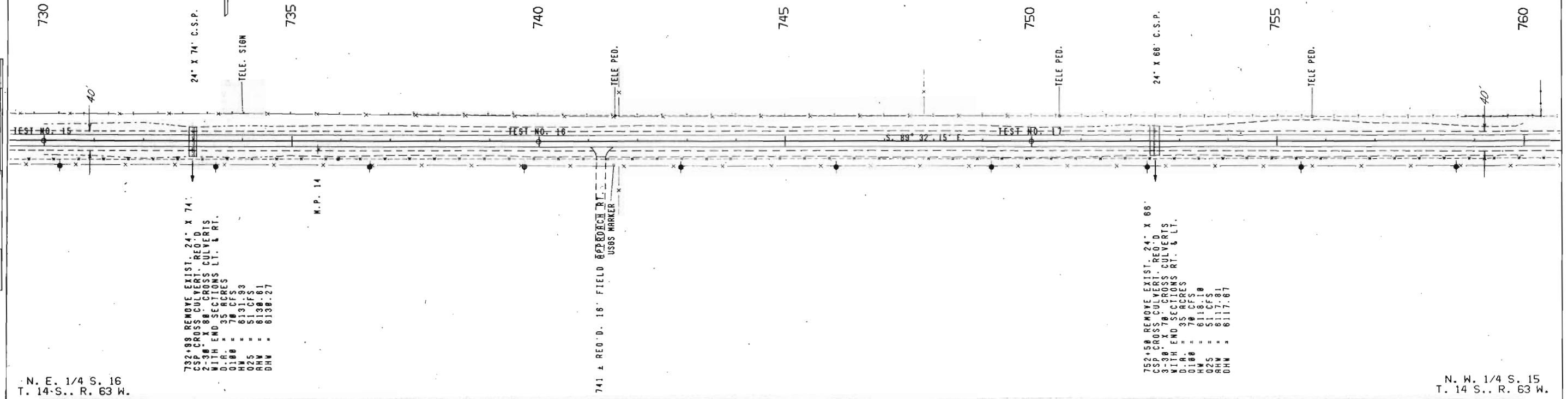
DATE OF SURVEY: 11/14/88
 DRAWN BY: J. H. HARRIS
 CHECKED BY: J. H. HARRIS
 DATE OF CHECK: 11/14/88

S. E. 1/4 S. 9
 T. 14 S. R. 63 W.

AS CONSTRUCTED
 NO REVISIONS [] REVISED [] VOID []

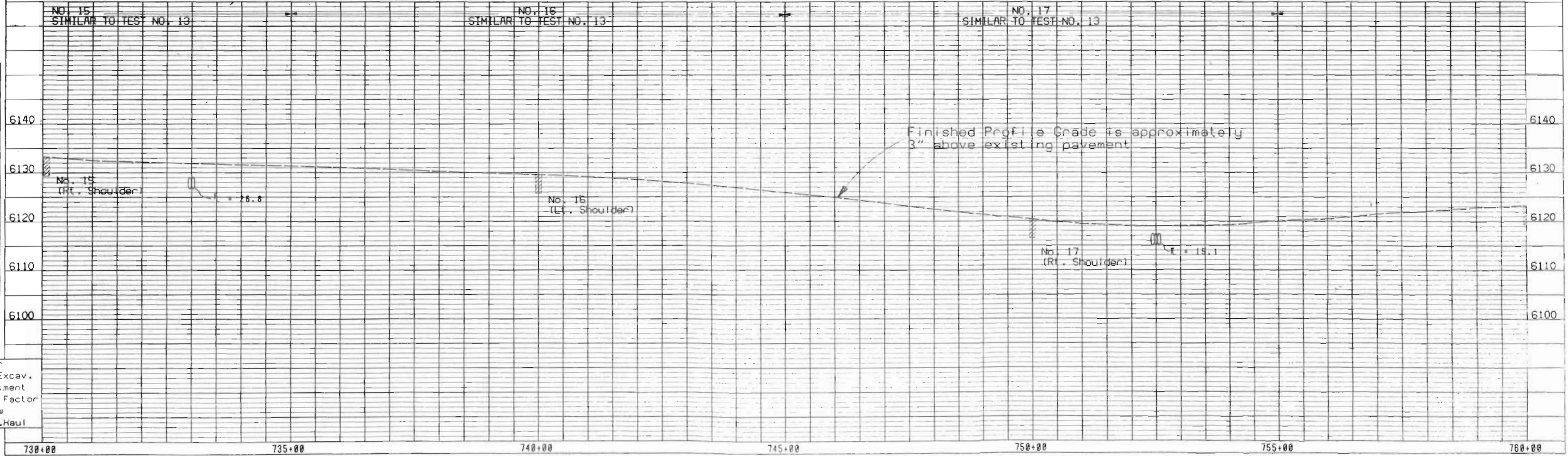
FED. ROAD REGION	DIVISION	PROJ. NO.	SHEET NO.	TOTAL SHEETS
VIII	COLO.	SR 0094(23)	12	

S. W. 1/4 S. 10
 T. 14 S. R. 63 W.



N. E. 1/4 S. 16
 T. 14 S. R. 63 W.

N. W. 1/4 S. 15
 T. 14 S. R. 63 W.



PLAN	DATE
SAVED	
NOTE BOOK	
ALIGNED	
CHECKED	
RT. OF WAY	
CHECKED	
NO.	

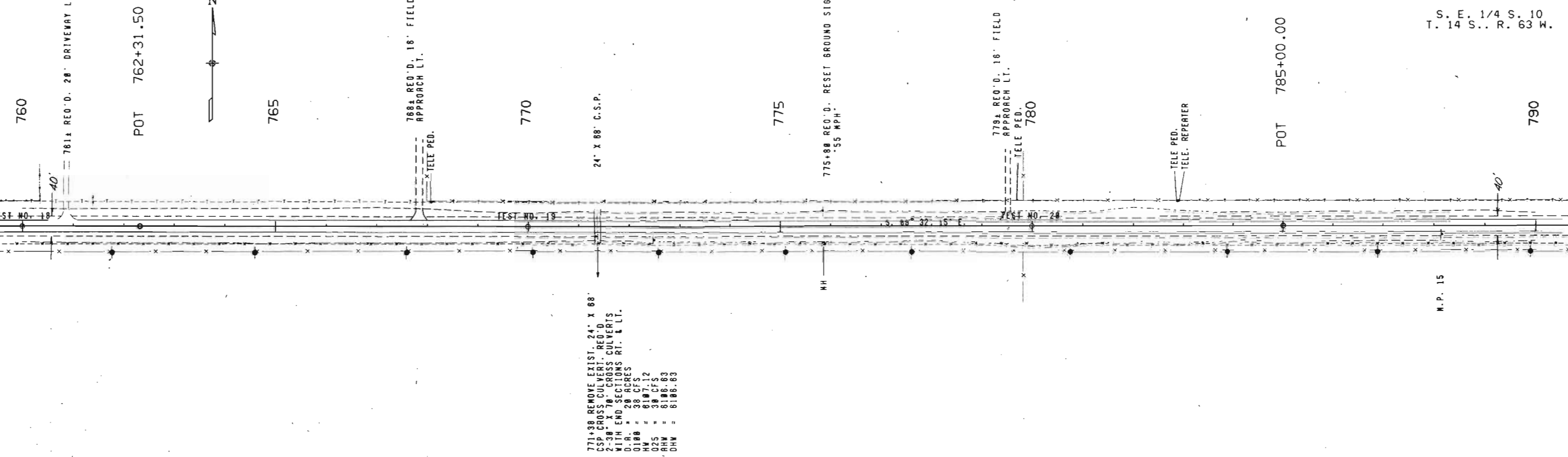
PROFILE	DATE
SAVED	
NOTE BOOK	
ALIGNED	
CHECKED	
RT. OF WAY	
CHECKED	
NO.	

Factor
 Incl. Excav.
 Embankment
 Emb. X Factor
 Borrow
 YD. MI. Haul

02/29/88 15:59:59 NSP1:::(SMD/88061/PLANPS) SH94SH3 88061 H102

STATE OF TEXAS
 DEPARTMENT OF HIGHWAYS
 DIVISION OF HIGHWAYS
 U. S. HIGHWAY NO. 14
 W. 14 S. 15 T. 14 S. R. 63 W.

S. W. 1/4 S. 10
 T. 14 S. R. 63 W.

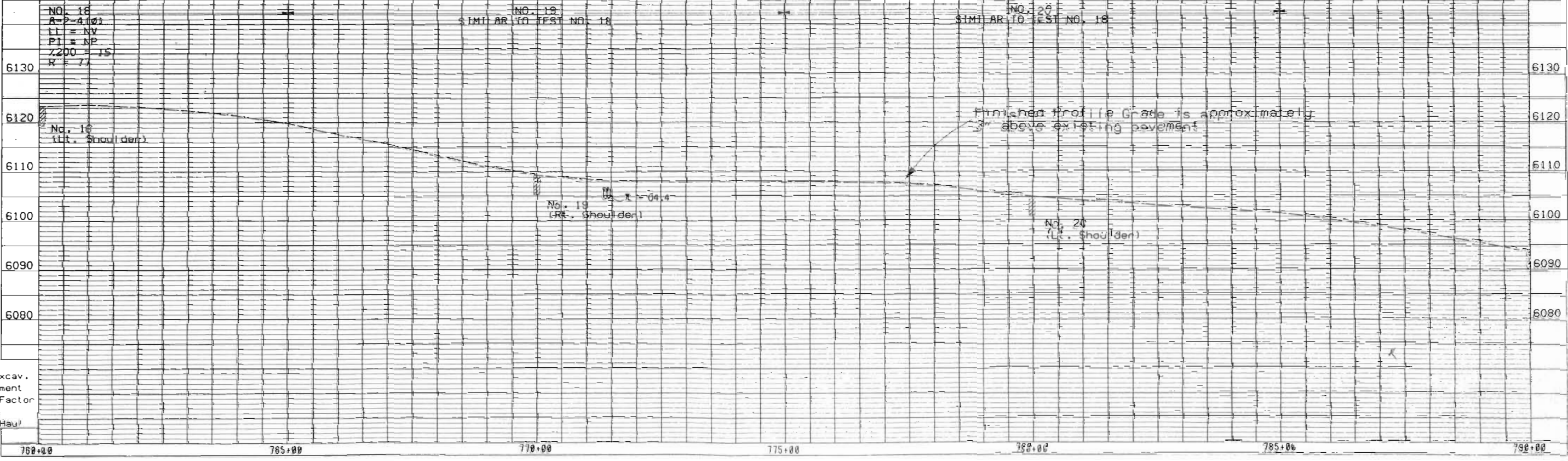


FED. ROAD REGION	DIVISION	PROJ. NO.	SHEET NO.	TOTAL SHEETS
VIII	COLD.	SR 0094(23)	13	

S. E. 1/4 S. 10
 T. 14 S. R. 63 W.

N. W. 1/4 S. 15
 T. 14 S. R. 63 W.

N. E. 1/4 S. 15
 T. 14 S. R. 63 W.



DATE	BY

PLAN SURVEYED
 PLOTTED
 ALIGNED CHECKED
 NOTE BOOK NO. OF ANY CHECKED

DATE	BY

PROFILE SURVEYED
 PLOTTED
 ALIGNED CHECKED
 NOTE BOOK NO. OF ANY CHECKED

Factor
 Uncl. Excav.
 Embankment
 Emb. X Factor
 Borrow
 YD. MI. Haul

02/29/88 16:11:51 NSP1::: (SMD/88061/PLANS) SH94SH4 88061 H102

DATE: 11/11/68
 DRAWN BY: J. H. HARRIS
 CHECKED BY: J. H. HARRIS
 11/11/68

S. E. 1/4 S. 10
 T. 14 S. R. 63 W.

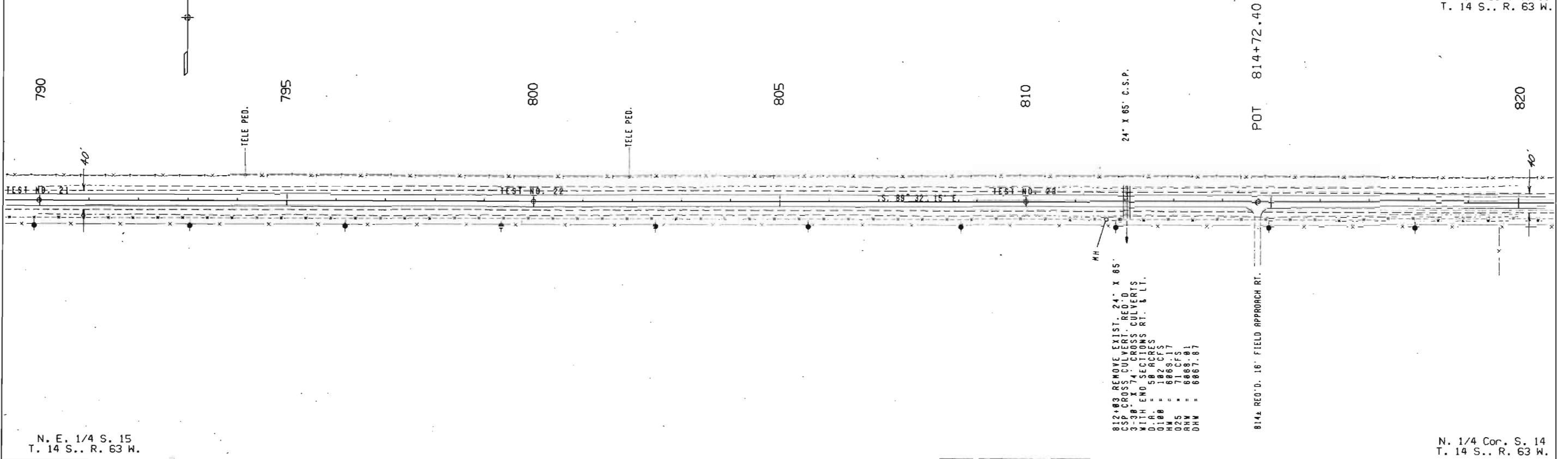


AS CONSTRUCTED
 NO REVISIONS [] REVISED [] VOID []

FED. ROAD REGION	DIVISION	PROJ. NO.	SHEET NO.	TOTAL SHEETS
VII	COLO.	SR 0094(23)	14	

S. 1/4 Cor. S. 11
 T. 14 S. R. 63 W.

PLAN	SURVEYED	BY	DATE
NO.			

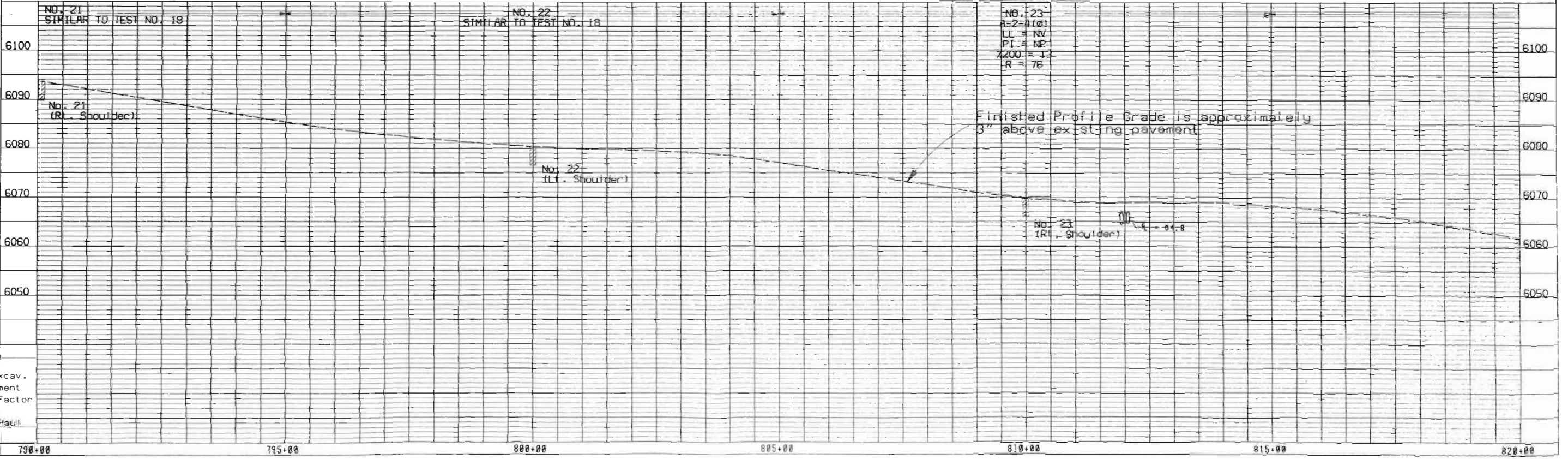


N. E. 1/4 S. 15
 T. 14 S. R. 63 W.

N. 1/4 Cor. S. 14
 T. 14 S. R. 63 W.

812+03 REMOVE EXIST. 24' X 65' CSP CROSS CULVERT. REQ'D 3-38' X 74' CROSS CULVERTS WITH END SECTIONS RT. & LT. D.A. = 58 ACRES
 0188 = 8869.17
 025 = 7118.91
 026 = 8869.81
 027 = 8867.87

PROF. FILE	SURVEYED	BY	DATE
NO.			



02/23/68 15:18:19 NSP1:::(SMD/88061/PLANPS) SH94545 88061 H102

Factor
 Uncl. Excav.
 Embankment
 Emb. X Factor
 Borrow
 YD. MI. Haul

02/29/88 1:09:44 NSP1::: (SMU/88061/PLANS) SHASHE 88061 H102

BY	DATE

PROFILE SURVEYED
 PLOTTED
 NOTE BOOK NO. NOTED
 SUR. NOTATIONS CH.

BY	DATE

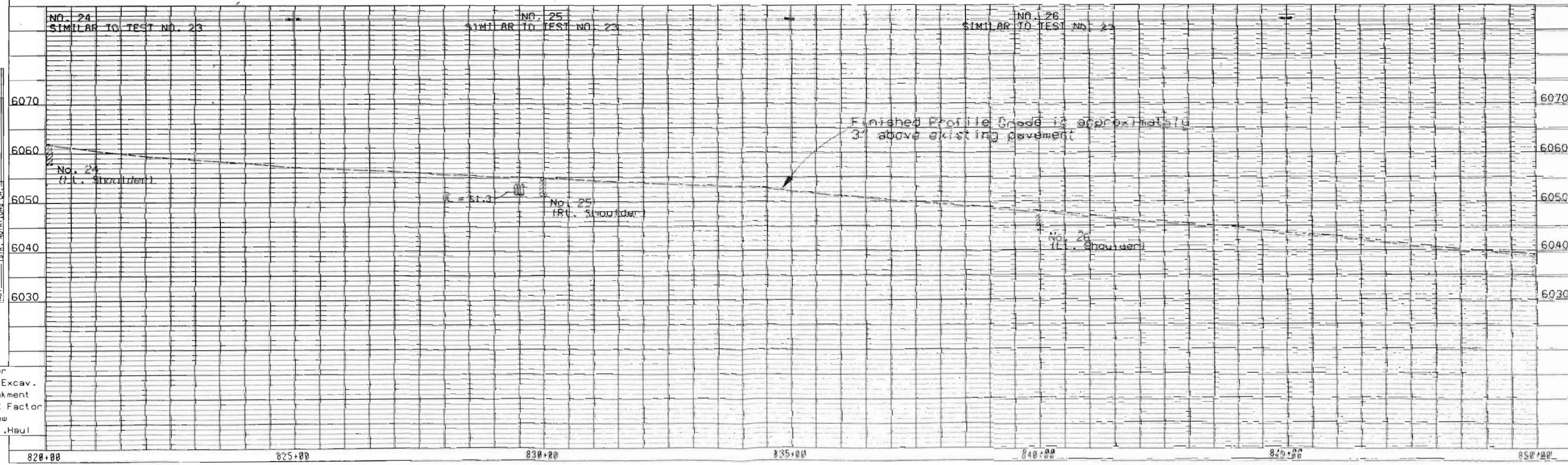
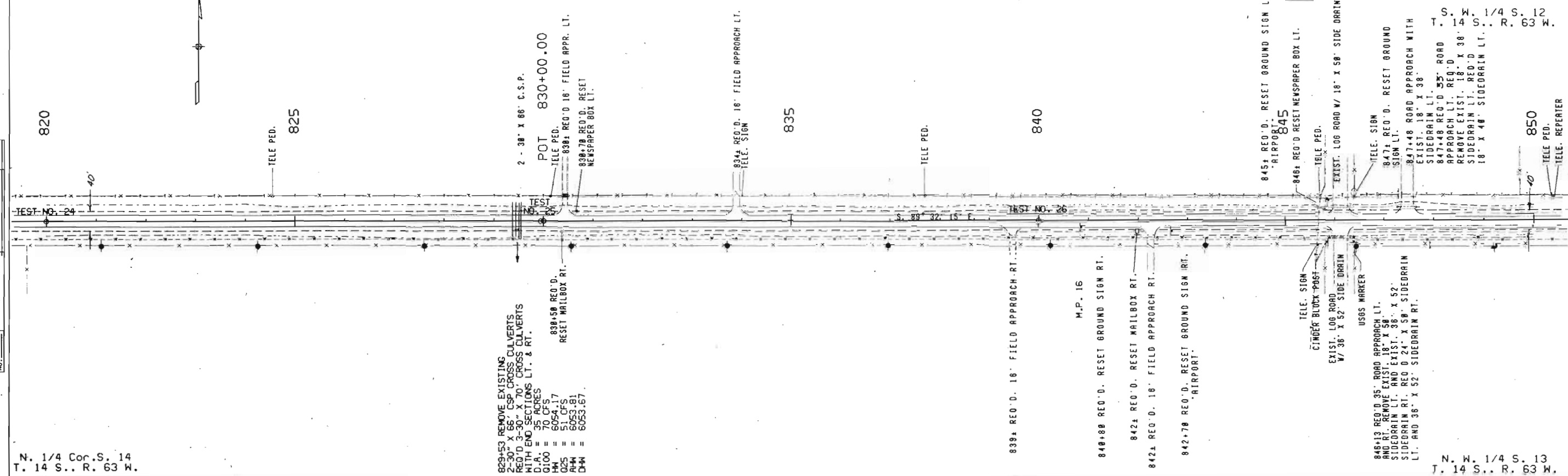
PLAN SURVEYED
 PLOTTED
 NOTE BOOK NO. NOTED
 RT. OF MAY CHECKED

Factor
 Uncl. Excav.
 Embankment
 Emb. X Factor
 Borrow
 YD. MI. Haul

S. 1/4 Cor. S. 11
T. 14 S.. R. 63 W.

N. 1/4 Cor. S. 14
T. 14 S.. R. 63 W.

N. W. 1/4 S. 13
T. 14 S.. R. 63 W.



AS CONSTRUCTED			FED. ROAD REGION	DIVISION	PRJ. NO.	SHEET NO.	TOTAL SHEETS
NO REVISIONS	REVISED	VSIG	VII	010	SR 0094(23)	15	

609+53 REMOVE EXISTING
 2'-30" X 56" C.S.P. CROSS CULVERTS
 REQ'D 3'-30" X 70" CROSS CULVERTS
 WITH END SECTIONS LT. & RT.
 D.A. = 35 ACRES
 70 CFS
 838+58 REQ'D.
 RESET MAILBOX RT.
 HM = 6054.17
 Q25 = 51 CFS
 AH4 = 6053.81
 CH4 = 6053.67

Finished Profile Grade is approximately 3' above existing pavement

PL 14 (7/1/84)
 REVISIONS
 SECTION OF ROADWAY
 T. 14 S. R. 63 W.
 2/2/88

AS CONSTRUCTED		FED. ROAD REGION	DIVISION	PROJ. NO.	SHEET NO.	TOTAL SHEETS
NO REVISIONS	REVISED	VIII	COLO.	SR 0094(23)	16	

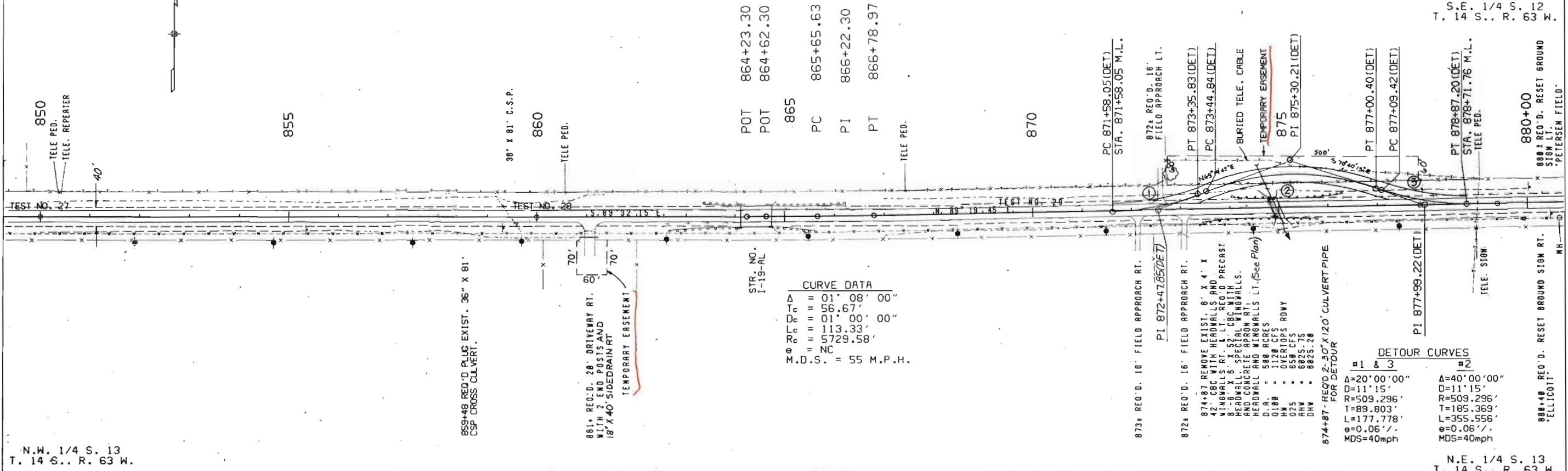
S.W. 1/4 S. 12
 T. 14 S. R. 63 W.

S.E. 1/4 S. 12
 T. 14 S. R. 63 W.

PLAN	SURVEYED	DATE
NO.	BY	
NO.	BY	

PROFILE	SURVEYED	DATE
NO.	BY	
NO.	BY	

Factor
 Uncl. Excav.
 Embankment
 Emb. X Factor
 Borrow
 YD. MI. Haul

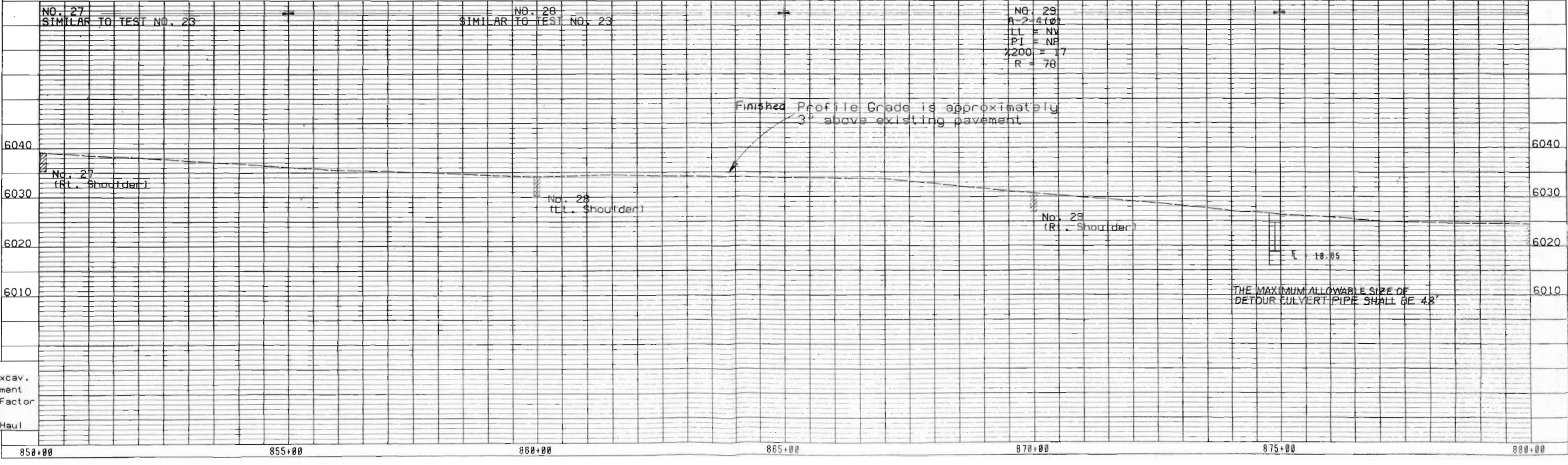


STR. NO. I-13-RL

CURVE DATA	
Δ	= 01° 08' 00"
T_c	= 56.67'
D_c	= 01° 00' 00"
R_c	= 113.33'
e	= 5729.58'
$M.D.S.$	= 55 M.P.H.

DETOUR CURVES

#1 & 3	#2
$\Delta = 20' 00' 00''$	$\Delta = 40' 00' 00''$
$D = 11' 15''$	$D = 11' 15''$
$R = 509.296'$	$R = 509.296'$
$T = 89.803'$	$T = 185.369'$
$L = 177.778'$	$L = 355.556'$
$e = 0.06\%$	$e = 0.06\%$
$MDS = 40\text{mph}$	$MDS = 40\text{mph}$



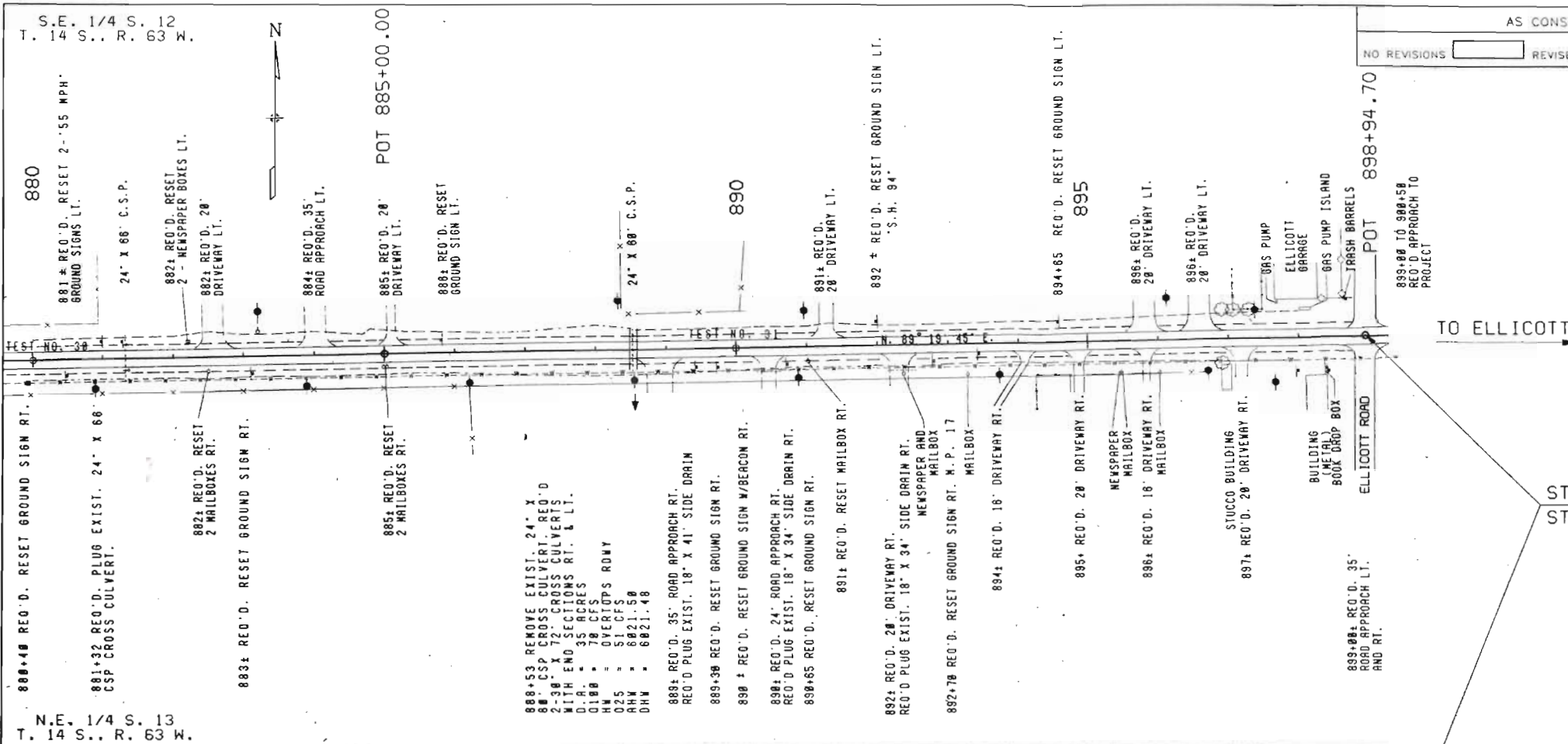
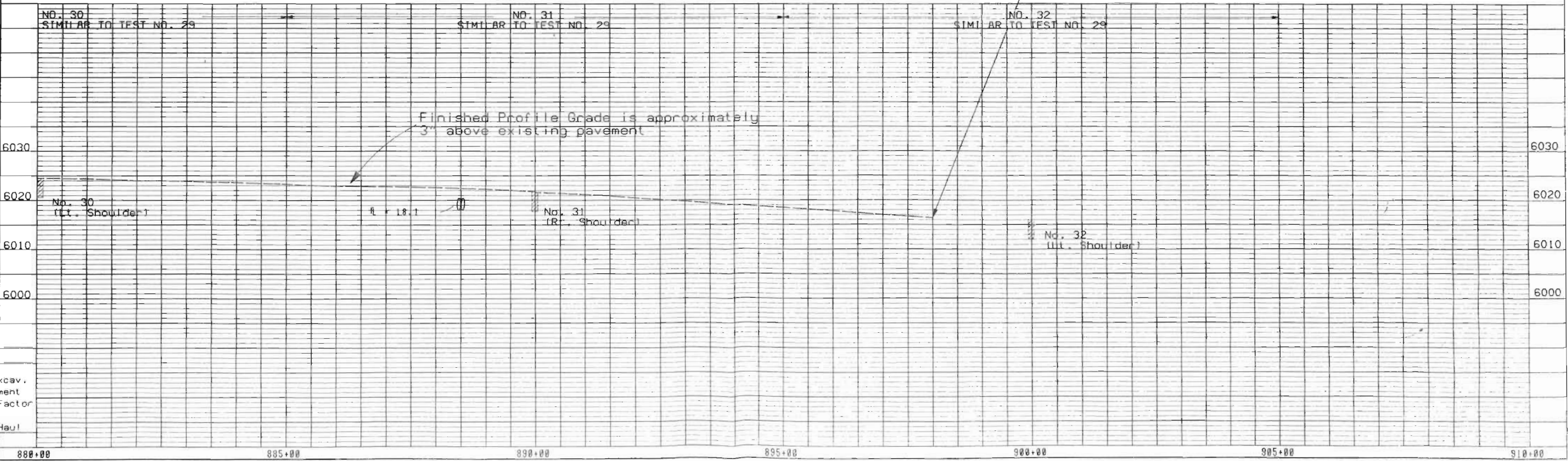
02/29/88 21:34:38 NSP1:::(SMD/88061/PLANPS) SHS4SH7 88061 H102

02/29/88 17:15:47 NSP1:::(SMD/88061/PLANS) SH94SHB 88061 H102

DATE	BY

DATE	BY

Factor
Uncl. Excav.
Embankment
Emb. X Factor
Borrow
YD. MI. Haul



S.E. 1/4 S. 12
T. 14 S.. R. 63 W.

N.E. 1/4 S. 13
T. 14 S.. R. 63 W.

S.W. 1/4 S. 7
T. 14 S.. R. 62 W.

AS CONSTRUCTED		
NO REVISIONS	REVISED	VOID

FED. ROAD REGION	DIVISION	PROJ. NO.	SHEET NO.	TOTAL SHEETS
VIII	COLO.	SR 0094(23)	17	

STA. 899+00 END SR 0094(23) =
STA 899+00 ON S 0020(5) = APPROX. M.P. 17.1

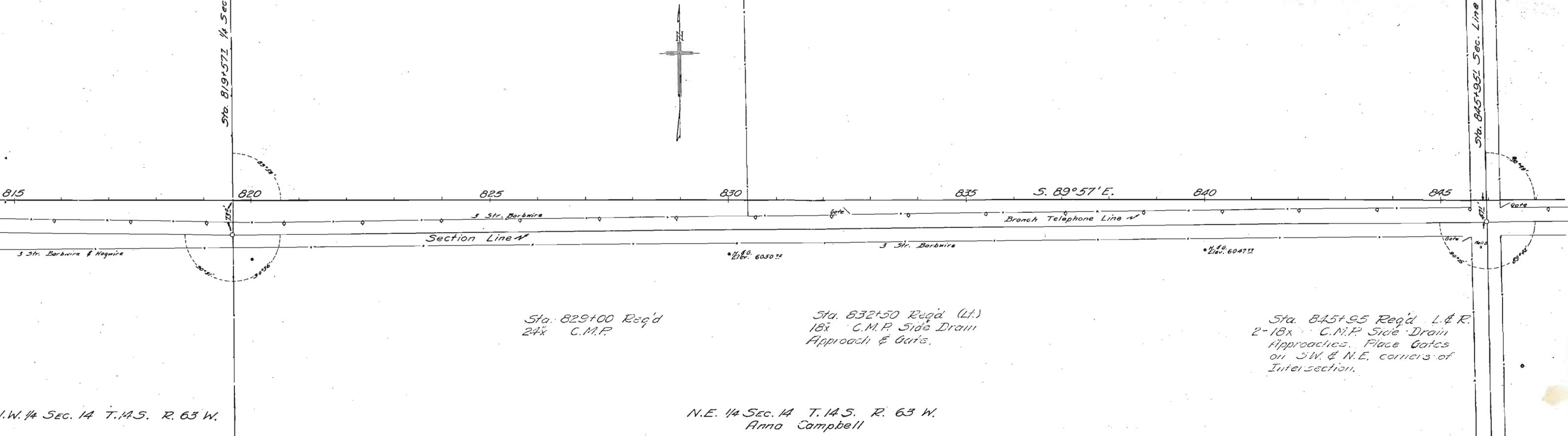
N.W. 1/4 S. 18
T. 14 S.. R. 62 W.

TO ELLICOTT

FED. ROAD DIST. NO.	STATE	SP PROJ. NO.	SHEET NO.	TOTAL SHEETS
3	COLO.	678-C	16	113

Carl Lundquist
S.E. 1/4 Sec. 11 T.14 S. R. 63 W.

W. 1/4 Sec. 11 T.14 S. R. 63 W.



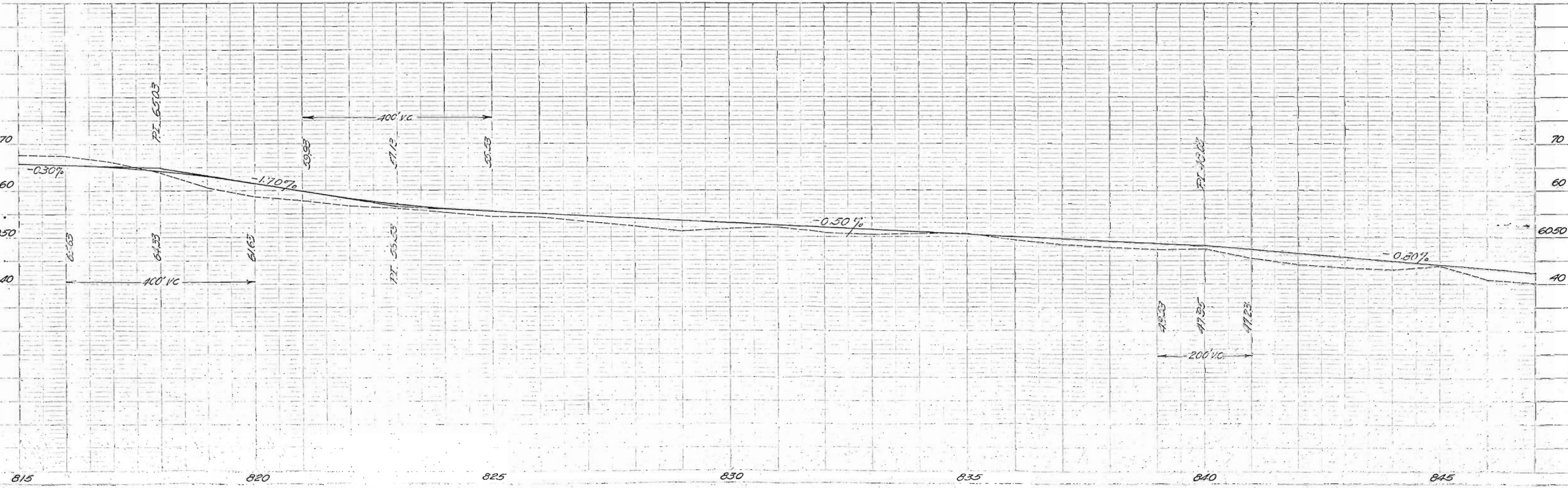
Sta. 829+00 Req'd
24x C.M.P.

Sta. 832+50 Req'd (Lt.)
18x C.M.P. Side Drain
Approach & Gate.

Sta. 845+95 Req'd L. & R.
2-18x C.M.P. Side Drain
Approaches. Place Gates
on SW & NE corners of
Intersection.

N.E. 1/4 Sec. 14 T.14 S. R. 63 W.
Anna Campbell

N.W. 1/4 Sec. 14 T.14 S. R. 63 W.



State Highway # 94				
FEE ROAD DIST. NO.	STATE	S.P. PROJ. NO.	SHEET NO.	TOTAL SHEETS
3	COLO.	678-6	17	113

Robinson Grain Co.
S.W. 1/4 SEC. 12 T.14 S. R. 63 W.

S.E. 1/4 SEC. 12 T.14 S. R. 63 W.

Sta. 863+75 Reg'd
2 Spans @ 23' Treated Timber
16' min. Drainage Area (Combined Sta. 874+)
18mi. haul to site - Payroll
Remove 48" C.M.P. (kt.) & 200 yd Channel Improve. (kt.)

Sta. 859+00 Reg'd
36" C.M.P.
45° A-skew Dyke on lower side.

Sta. 860+00 Reg'd
Approaches Rt. & Lt.
4 Gates.

Sta. 872+70 Reg'd
15" C.M.P. Side Drains
Approach & Gate (kt.)

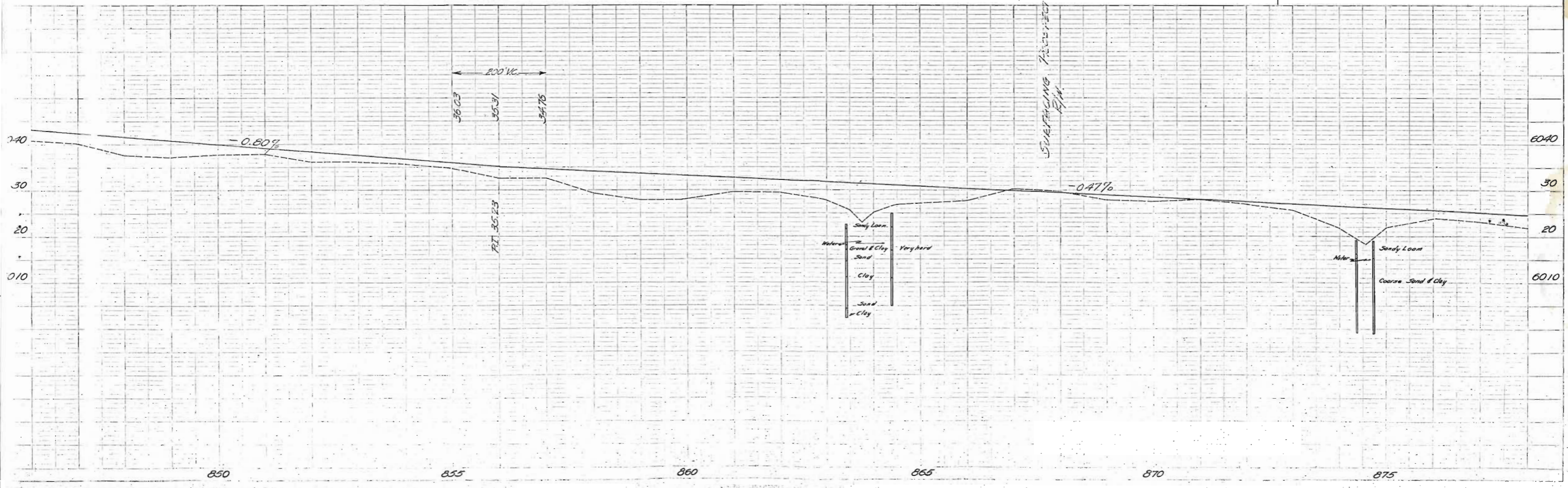
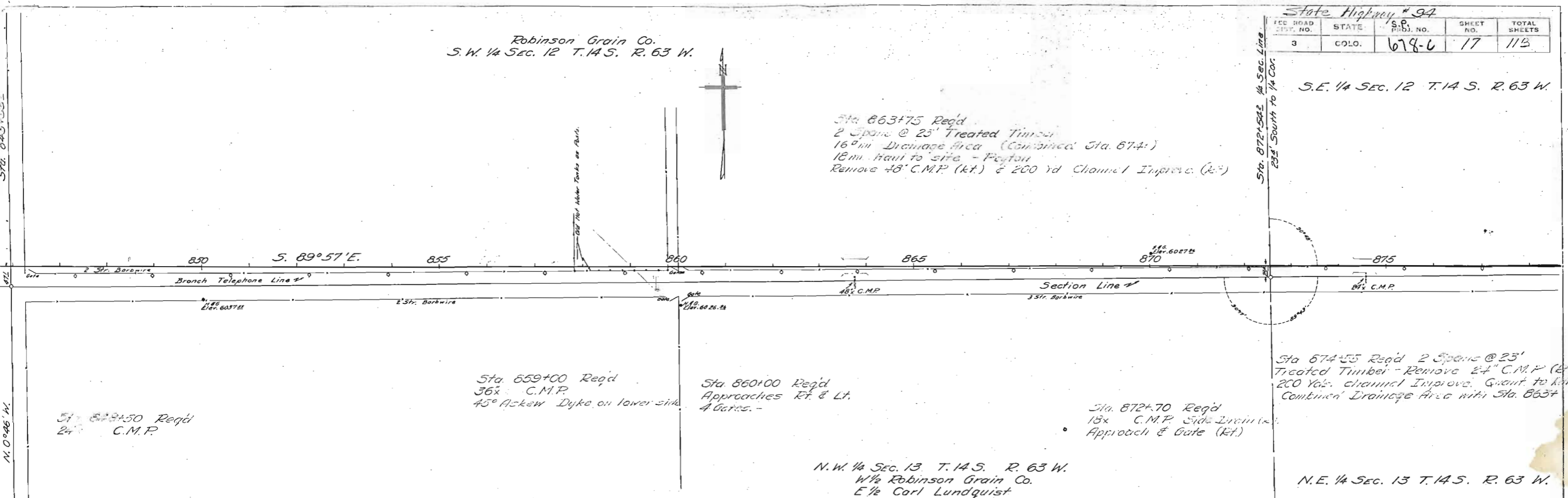
Sta. 874+55 Reg'd 2 Spans @ 23'
Treated Timber - Remove 24" C.M.P. (kt.)
200 Yds. channel Improve. Grant to Hwy.
Combined Drainage Area with Sta. 863+

N.W. 1/4 SEC. 13 T.14 S. R. 63 W.
W 1/2 Robinson Grain Co.
E 1/2 Carl Lundquist

N.E. 1/4 SEC. 13 T.14 S. R. 63 W.

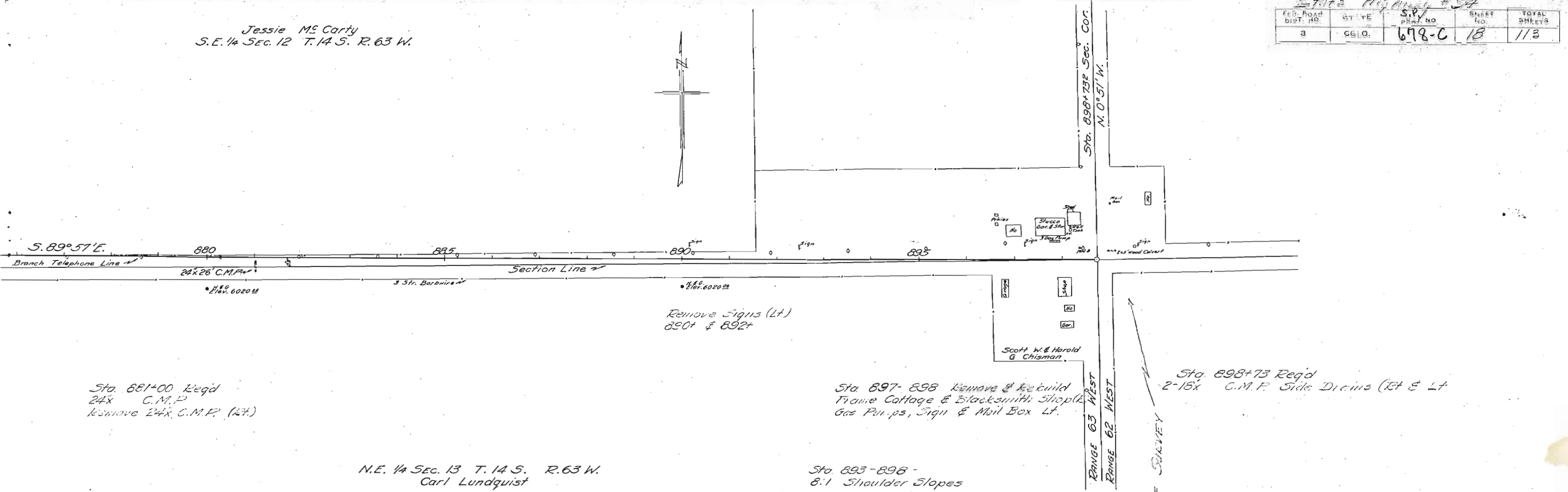
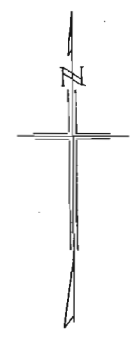
Sta. 845+00

N. 0°46' W.



Jessie Mc Carty
S.E. 1/4 Sec. 12 T. 14 S. R. 63 W.

FED. ROAD DIST. NO.	STATE	S.P.V. PROJ. NO.	SHEET NO.	TOTAL SHEETS
3	CGLO.	678-C	18	113



Sta. 881+00 Reg'd
24x C.M.P.
Remove 24x C.M.P. (Rt.)

N.E. 1/4 Sec. 13 T. 14 S. R. 63 W.
Carl Lundquist

Sta. 893-898 -
8:1 Shoulder Slopes

