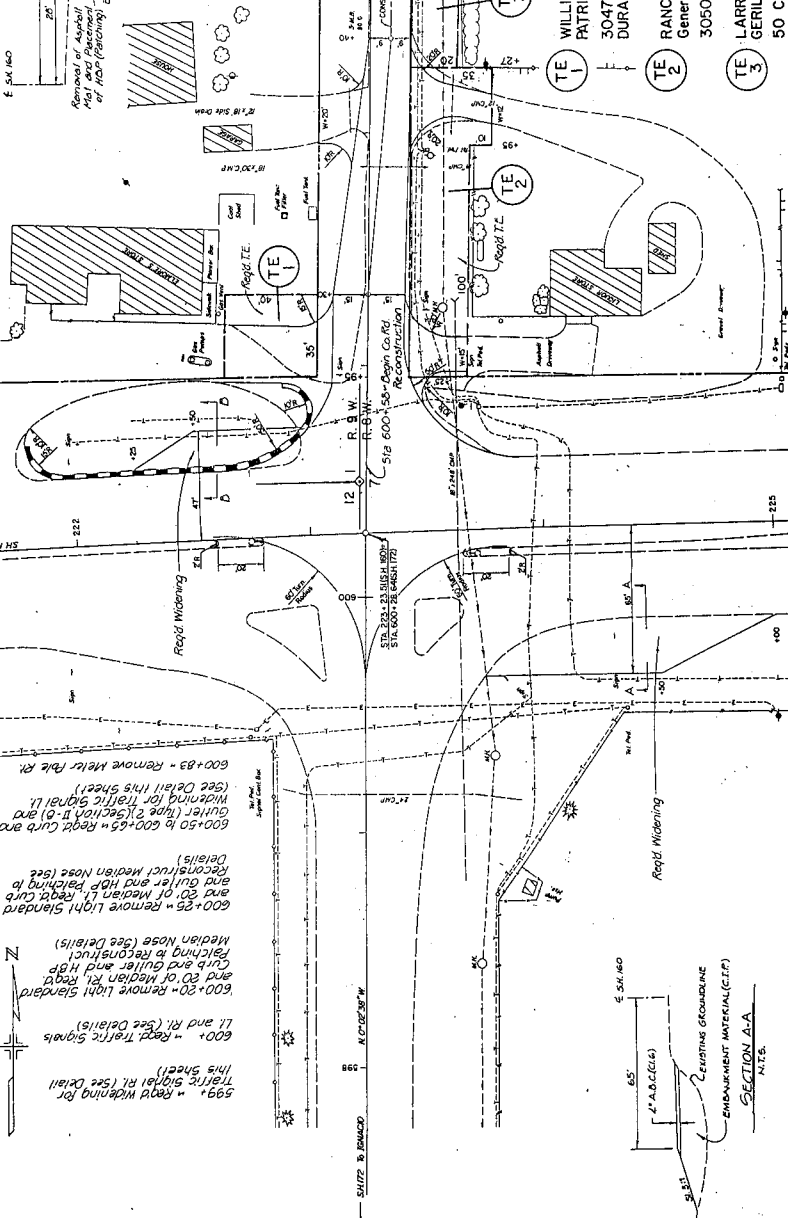
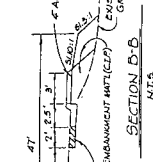


NO. REVISION	DATE	BY	REASON
3			

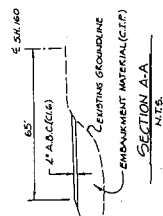
RIGHT OF WAY

INTERSECTION SH 160 AND COUNTY RD.
STA. 600 +

SCALE: 1"=20' (Top View)



- 599+ - Rapid Widening for Traffic Signal RL (See Detail This Sheet)
- 600+ - Rapid Traffic Signals LI and RI (See Details)
- 600+20 - Remove Light Standard and 50' of Median RL, Right Curb and Gutter to Reconstruct Median Nose (See Details)
- 600+25 - Remove Light Standard and 50' of Median LI, Right Curb and Gutter and H&P Paving to Reconstruct Median Nose (See Details)
- 600+50 to 600+65 - Rapid Curb and Widening for Traffic Signal LI (See Detail This Sheet)
- 600+83 - Remove H&P Pole RL (See Detail This Sheet)



- TE 1 WILLIAM E. NAVE and PATRICIA K. NAVE
30477 U.S. HWY. 160
DURANGO, CO. 81301
- TE 2 RANCHERO LIQUORS, a Co. General Partnership
30503 U.S. HWY. 160, DUR
- TE 3 LARRY L. WATERS and GERYLYNN WATERS
50 C.R. 234
DURANGO, COLO. 81301

T. 34 N. R. 8-9 W., N.M.P.M.

(51)5718 972

