

THE STATE DEPARTMENT OF HIGHWAYS DIVISION OF HIGHWAYS—STATE OF COLORADO

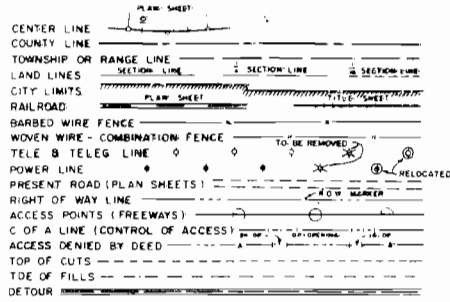
FEDERAL ROAD SECTION NO.	DIVISION	PROJECT NO.	SHEET NO.
9	COLDWATER	SU 0170 (9) Sec. I	1

RIGHT OF WAY
SH. 83 from Int. S.N. 115 - E. B. N.

INDEX OF SHEETS

REVISIONS	
0-2-69	Ch. Plan - Ch. Length of Project
2-18-69	Change End R.O.W. Sta.
5-25-70	Add "Sec. I"

CONVENTIONAL SIGNS:

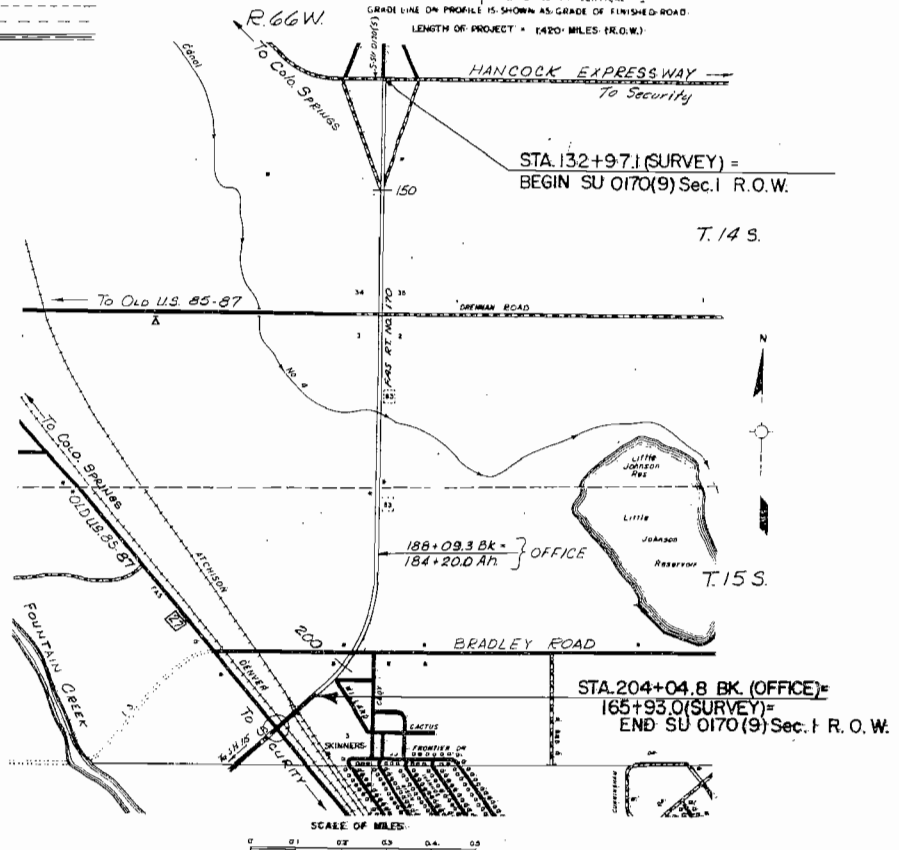


PLAN AND PROFILE OF PROPOSED FEDERAL AID PROJECT NO. SU 0170 (9) Sec. I STATE HIGHWAY NO. 83 EL PASO COUNTY RIGHT OF WAY

- SHEET NO
- 1 Sketch Map and Title Page
 - 2 Tabulation of Properties
 - 3-5 Alignment Plans and Profile
 - 6 Ownership Map

SCALE OF ORIGINAL DRAWINGS

- ON PLAN: 1" = 100 FT
1" = 100 FT HORIZONTAL
ON PROFILE: 1" = 10 FT VERTICAL
- GRADE LINE ON PROFILE IS SHOWN AS GRADE OF FINISHED ROAD.
LENGTH OF PROJECT = 1420 FEET (R.O.W.)



R. O. W. TABULATION OF PROPERTIES IN EL PASO COUNTY S.H.No. 83 PROJ. SU 0170 (9) Sec.1

FEDERAL ROAD DISTRICT NO.	DISTRICT	PROJECT NO.	SHEET NO.
6	CALHOUN	SU 0170 (9) Sec.1	2

RIGHT OF WAY SH 83 from Jct. S.H.115 - E.B.N.

PARCEL NO.	OWNER	ADDRESS	LOCATION	AREA IN ACRES			PURCHASE DATA					REMARKS	NO.	
				PARCEL	TO BE ACQUIRED	REMAINDER	LAND	IMPROV'MTS	DAMAGE	MISC.	TOTAL			
			T.14 S., R.66 W., 6th P.M.											
1 Rev	PINEHURST INVESTMENT CO., A PARTNERSHIP		SW 1/4 SEC. 35	1.48	1.48	299.031								
TE-1	PINEHURST INVESTMENT CO., A PARTNERSHIP		SW 1/4 SEC. 35	0.06	0.06									
1A	THE HASSLER & BATES COMPANY		SW 1/4 SEC. 35	0.12	0.12	0.801								
2 Rev	PINEHURST INVESTMENT CO., A PARTNERSHIP		E. 1/2 SE. 1/4 SEC. 34	1.60	1.60	70.291								
TE-2	PINEHURST INVESTMENT CO., A PARTNERSHIP		E. 1/2 SE. 1/4 SEC. 34	0.06	0.06									
			T.15 S., R.66 W., 6th P.M.											
3	THE HASSLER & BATES COMPANY		NE. 1/4 NE. 1/4 SEC. 3	4.79	4.79	43.311								
TE-3	THE HASSLER & BATES COMPANY		NE. 1/4 NE. 1/4 SEC. 3	1.12	1.12									
4	CONTINENTAL MATERIALS CORP.		W. 1/2 SEC. 2 & E. 1/2 SEC. 3	22.20	22.20	172.781 31.521								
PE-4	CONTINENTAL MATERIALS CORP.		SE. 1/4 NE. 1/4 SEC. 3	2.75	2.75									
PE-4-A	CONTINENTAL MATERIALS CORP.		SW. 1/4 NW. 1/4 SEC. 2	3.45	3.45									
TE-4	CONTINENTAL MATERIALS CORP.		W. 1/2 SEC. 2	8.02	8.02									
5	RAYMOND L. DANIELS, OLIVER P. LE COMPTE & GERALD P. WAGNER		SW. 1/4 NW. 1/4 SW. 1/4 SEC. 2 & NE. 1/4 SE. 1/4 SEC. 3	14.56	14.02	4.971 79.771								
TE-5	RAYMOND L. DANIELS, OLIVER P. LE COMPTE & GERALD P. WAGNER		SW. 1/4 NW. 1/4 SW. 1/4 SEC. 2 REFILMS OF SECURITY COLO. ADDITION NO. 13 SEC. 2 & 3	1.44	1.44									
6	THE COLORADO SPRINGS NATIONAL BANK, AS TRUSTEE		BLOCK 8	181,709	181,709	96,0891 63,2311								
7	W.J. DRIVER, ADM. OF VETERANS' AFFAIRS		LOT 15, BLOCK 6	9,552	9,552	8,4211								
8	ELIAS PETE JIRON		LOT 14, BLOCK 6	7,643	7,643	8,8461								
9	FRED C. SPROUL, JR. & ELMER C. SPROUL		TRACT A, BLOCK 6	3,521	3,521	19,1741								
10	SPROUL INVESTMENT CORP. OF COLORADO, A COLORADO CORPORATION		BLOCK 8	5,687	5,687	3,2421								
TE-4A	CONTINENTAL MATERIALS CORP.		SW. 1/4 NW. 1/4 SEC. 2	0.94 AC.	0.94 AC.									
TE-4B	CONTINENTAL MATERIALS CORP.		SE. 1/4 NE. 1/4 SEC. 3	1.24 AC.	1.24 AC.									

REVISIONS	
7-23-66	CHANGED NAMES ON TRACT 2, 3
8-13-63	Rev For 1962 Add 1-A
2-28-69	Added PE-4 & PE-4-A
3-23-70	Added "Sec 1"
2-21-71	Added Parcel TE-3, TE-4 & TE-5
2-17-72	Added TE-1, TE-2, TE-4A & TE-4B

NW 1/4 SEC. 35
T14S, R66W

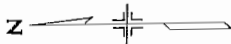
SW 1/4 SEC. 35
T14S, R66W

REVISIONS		
7-29-69	CHANGED NAME ON PAR 102	M.G.
9-15-69	REV. PLAN 145 - ADD PORT-A-CRIP STOPS	M.S.
3-23-70	ADDED "Sec. 1"	V.R.
1-31-75	ADDED STREET APPROACH STA 140+51	D.F.

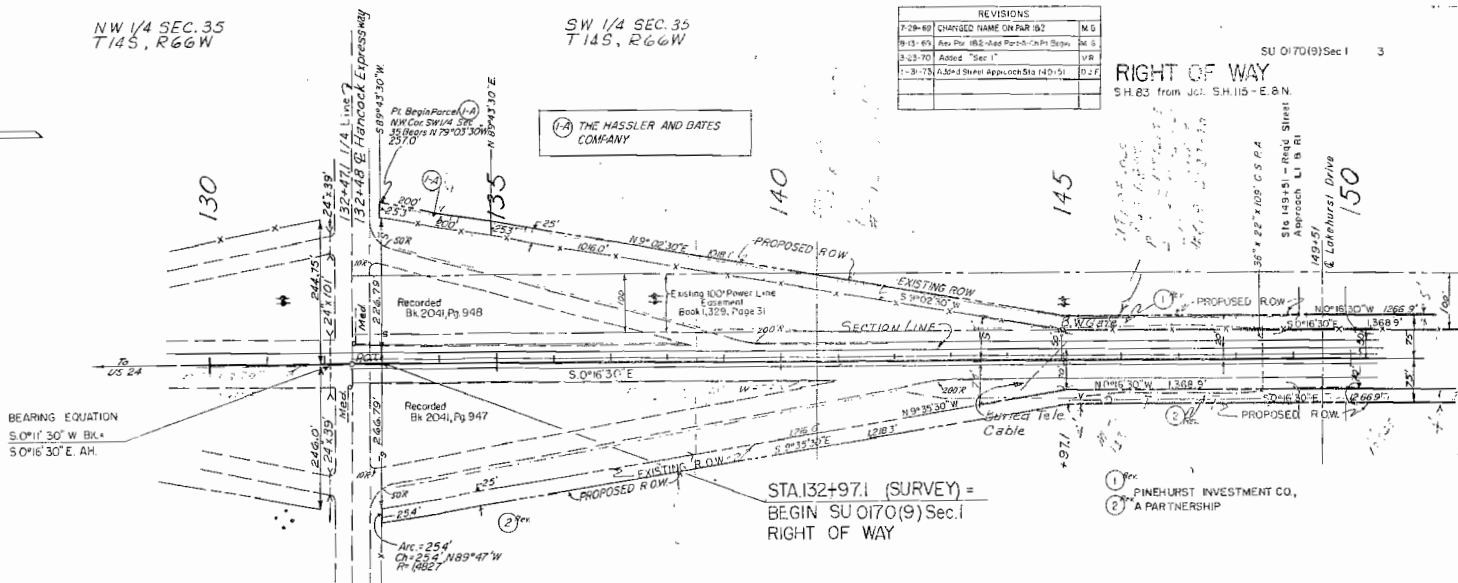
RIGHT OF WAY

SH.83 from Jct. S.H.115 - E.&N.

SU 0170(9) Sec. 1 3



THE HASSLER AND GATES
COMPANY



24740
24745

BEARING EQUATION
S.0°11'30\"/>

STA 132+97.1 (SURVEY) =
BEGIN SU 0170(9) Sec. 1
RIGHT OF WAY

① PINEHURST INVESTMENT CO.,
A PARTNERSHIP

NE 1/4 SEC. 34
T14S, R66W

B.M. No. 20 131+40
Nut on top bolt E. leg Stl. Twr. Pt.
Elev. 5898.60

SE 1/4 SEC. 34
T14S, R66W

B.M. No. 21 137+82
Nail in P.P. 96' Lt.
Elev. 5391.89

B.M. No. 22 145+00
H & B 49' Lt.
Elev. 5887.08

Test No. 14 A-1-a(0)
LL = 21
PI = 3
% 200 = 12
R = 73

Test No. 14A A-2-4(0) Similar to No. 10A
No. 10A A-2-4(0)
LL = NV
PI = N.P.
% 200 = 17
R = 77

Test No. 14B A-2-4(0)
LL = 27
PI = 7
% 200 = 32
R = 48

Test No. 15 A-1-a(0) Similar to No. 14
Test No. 15A A-2-4(0) Similar to No. 10A

5910

5900

5890

5880

5910

5900

5890

5880

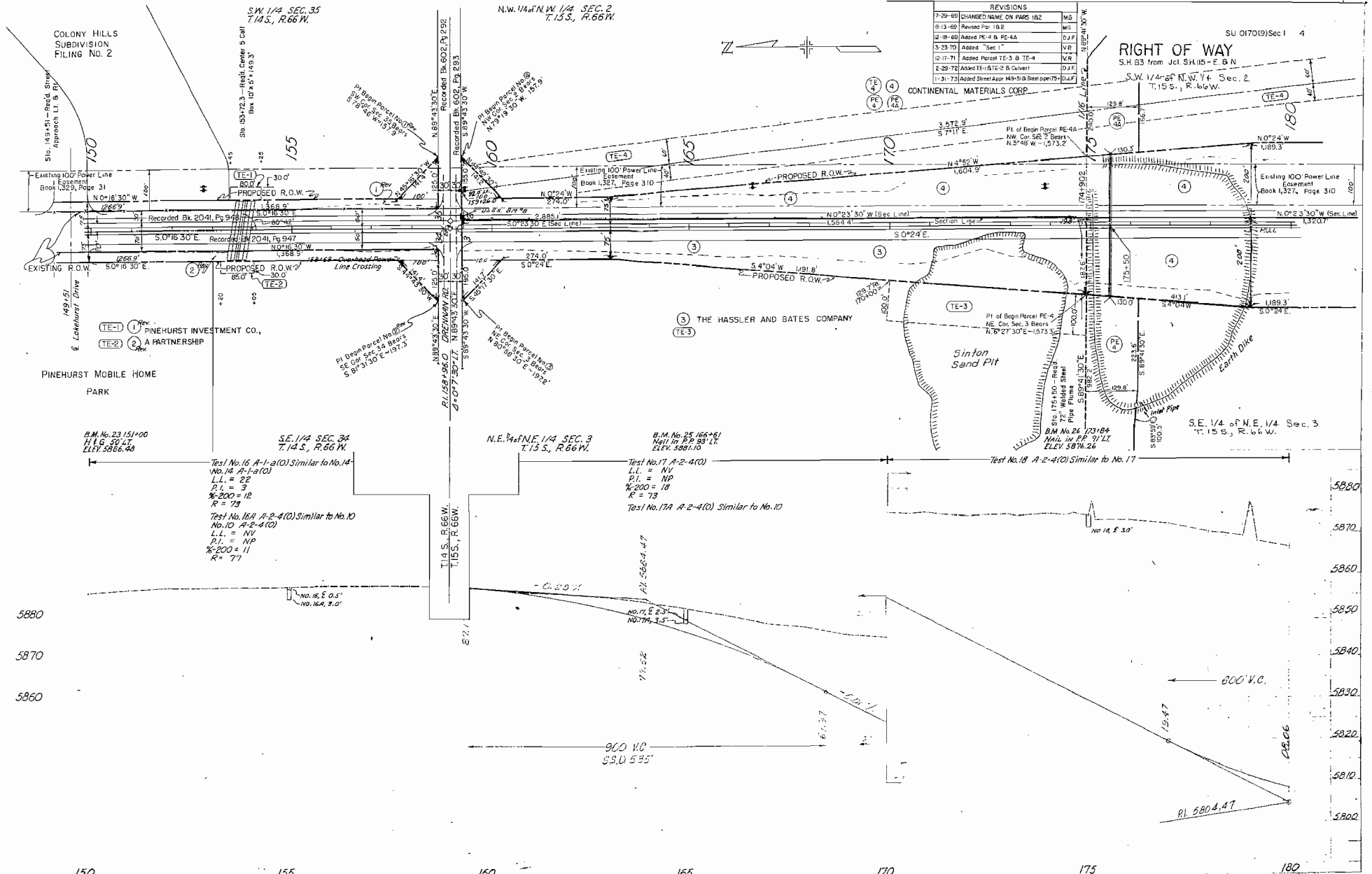
130

135

140

145

150



REVISIONS			
7-29-65	CHANGED NAME ON PMS 182	WG	
8-13-65	Revised Per 182	WG	
2-18-66	Added PE-4 & PE-4A	DJF	
3-23-70	Added "Sec 1"	VR	
12-17-71	Added Parcel TE-3, B, TE-4	VR	
2-29-72	Added TE-1&TE-2 & Culvert	DJF	
1-31-73	Added Street Assr. M-9-5-B Street pipe 72"	DJF	

RIGHT OF WAY
 S.H. 83 from Jct. S.H. 15 - E & N
 S.W. 1/4 of N.W. 1/4 Sec. 2
 T. 15 S., R. 66 W.

CONTINENTAL MATERIALS CORP.

THE HASSLER AND BATES COMPANY

Sinton Sand Pit

S.E. 1/4 of N.E. 1/4 Sec. 3
 T. 15 S., R. 66 W.

S.W. 1/4 SEC. 35
 T. 14 S., R. 66 W.

N.W. 1/4 of N.W. 1/4 SEC. 2
 T. 15 S., R. 66 W.

COLONY HILLS
 SUBDIVISION
 FILING NO. 2

SH 153+2.3 - Tech. Center 5 Call
 Box 10-35-1+193.3

Pl. of Begn. Parcel No. 60
 S.W. 1/4 Sec. 35
 N. 89° 43' 30" E
 519.49' 30" W
 159.124' 0"

Pl. of Begn. Parcel No. 3
 N.E. 1/4 Sec. 3
 N. 89° 43' 30" E
 519.49' 30" W
 159.124' 0"

B.M. No. 23 151+00
 H.G. 50.47
 ELEV. 5866.48

Test No. 16 A-1-a(0) Similar to No. 14
 No. 14 A-1-a(0)
 L.L. = 22
 P.I. = 3
 % = 200 = 12
 R = 73

Test No. 16A A-2-4(0) Similar to No. 10
 No. 10 A-2-4(0)
 L.L. = NV
 P.I. = NP
 % = 200 = 11
 R = 71

Test No. 17 A-2-4(0)
 L.L. = NV
 P.I. = NP
 % = 200 = 18
 R = 73
 Test No. 17A A-2-4(0) Similar to No. 10

Test No. 18 A-2-4(0) Similar to No. 17

Pl. 5664.47
 No. 17 E 23°
 No. 77M 3.5'

900 V.C.
 S.S.U 535'

Pl. 5804.47

Approx Location of Davis Ditching Co's proposed location of 6" Water Line approx. 600' No. of Drennan Rd. Permit # 844, 3-2-71

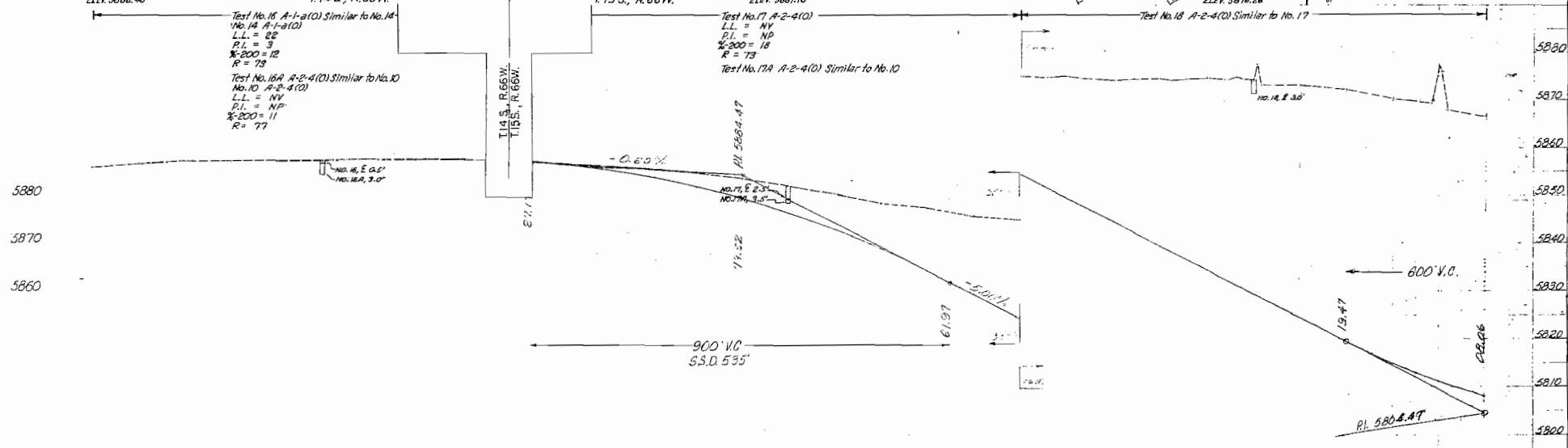
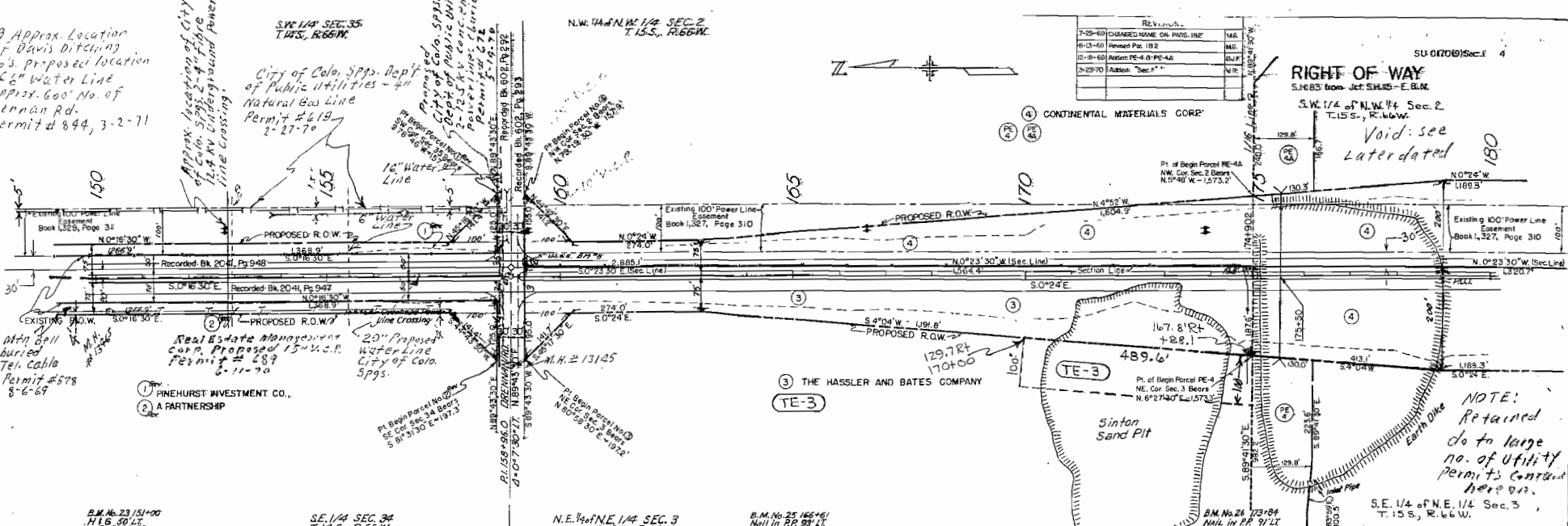
Approx. location of City of Colo. Sigs. 2" in. Pipe 12.4 AV Underground Power Line Crossing

S.W. 1/4 SEC. 35 T.15S., R.66W.
City of Colo. Sigs. Dept. of Public Utilities - 4" Natural Gas Line Permit # 619 2-27-70

N.W. 1/4 of N.W. 1/4 SEC. 2 T.15S., R.66W.

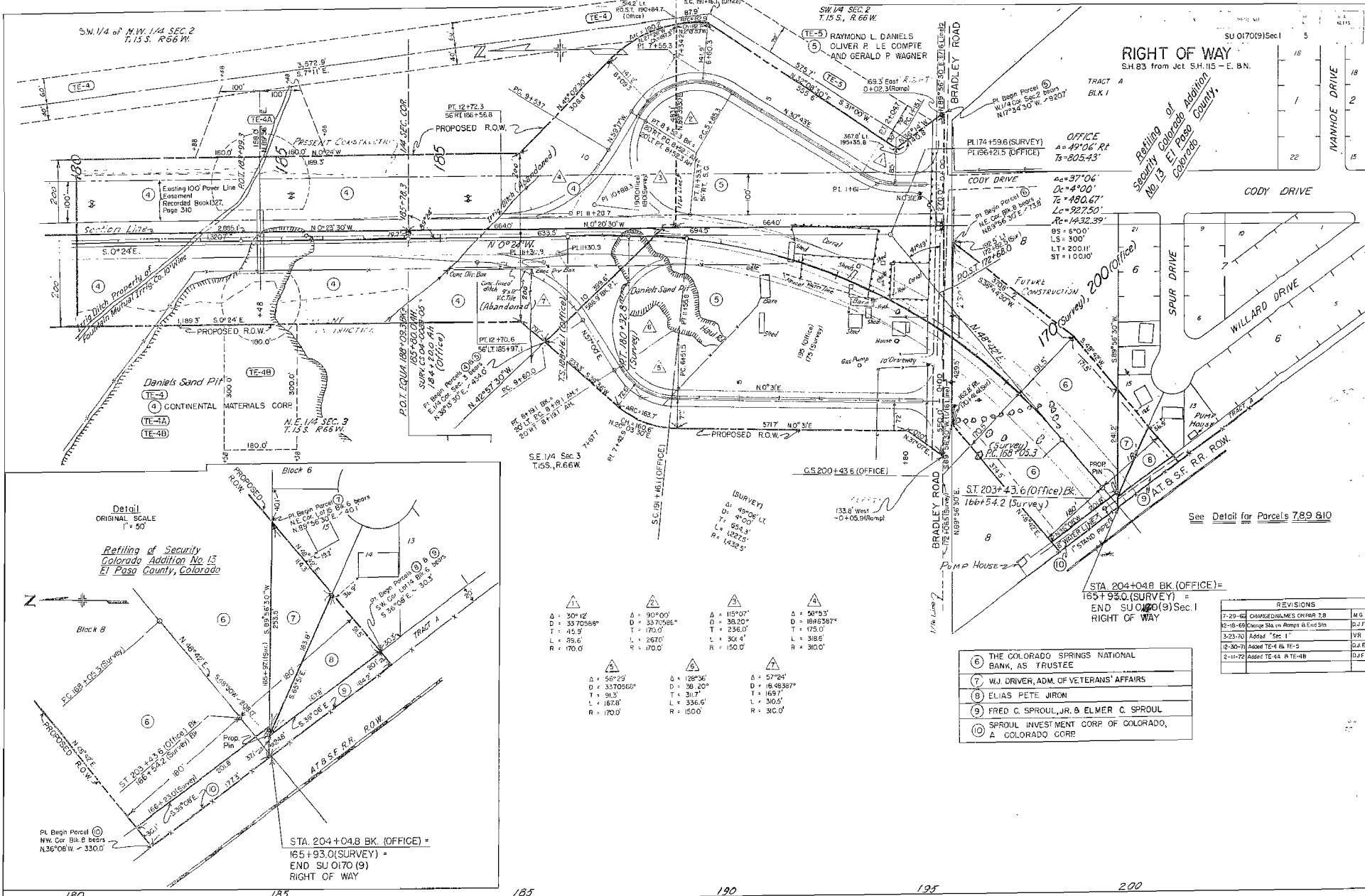
REVISION	DATE	BY
7-29-69	CHANGED NAME ON PMS. 11P	M.E.
8-13-69	Revised P.C. 1B 2	M.D.
10-10-69	Added PE-4 (1) PE-4A	D.J.F.
3-23-70	Added "Sec. 1"	M.R.

RIGHT OF WAY
S.W. 1/4 of N.W. 1/4 Sec. 2 T.15S., R.66W.
Void: see Later dated 180



NOTE: Retained do to large no. of utility permits contained here in.

S.W. 1/4 of N.W. 1/4 SEC 2
T.13 S., R.66 W.



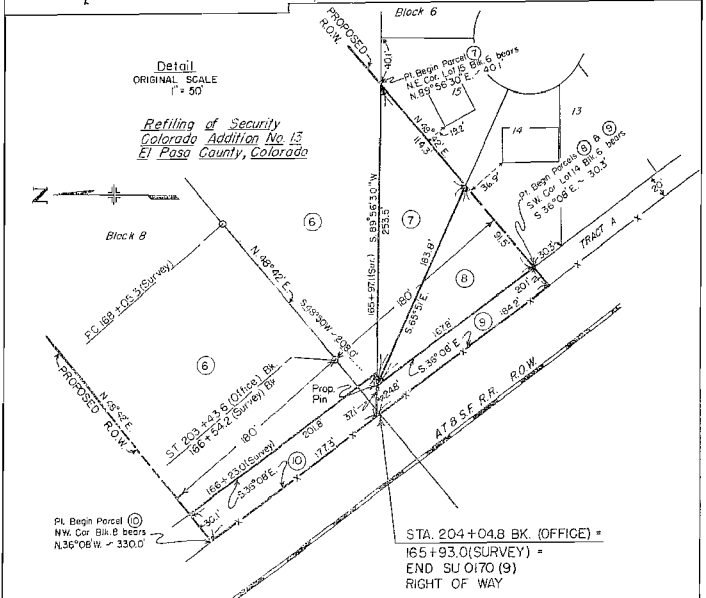
RIGHT OF WAY
S.H. 83 from Jct. S.H. 115 - E. B.N.

Refiling of
Security Colorado Addition
No. 13 El Paso County,

SU 0170(9) Sec 1	5
	15
	1
	12
	15

Detail
ORIGINAL SCALE
1" = 50'

Refiling of Security
Colorado Addition No. 13
El Paso County, Colorado



△ 30° 12'	△ 90° 00'	△ 115° 07'	△ 56° 53'
D = 3370566'	D = 3370566'	D = 38200'	D = 6882697'
T = 419.9'	T = 170.0'	T = 236.0'	T = 175.0'
L = 39.6'	L = 267.0'	L = 306.4'	L = 318.6'
R = 170.0'	R = 170.0'	R = 150.0'	R = 310.0'

⑥	THE COLORADO SPRINGS NATIONAL BANK, AS TRUSTEE
⑦	W.J. DRIVER, ADM. OF VETERANS' AFFAIRS
⑧	ELIAS PETE JIRON
⑨	FRED C. SPROUL, JR. & ELMER C. SPROUL
⑩	SPROUL INVESTMENT CORP OF COLORADO,
⑪	A. COLORADO CORP.

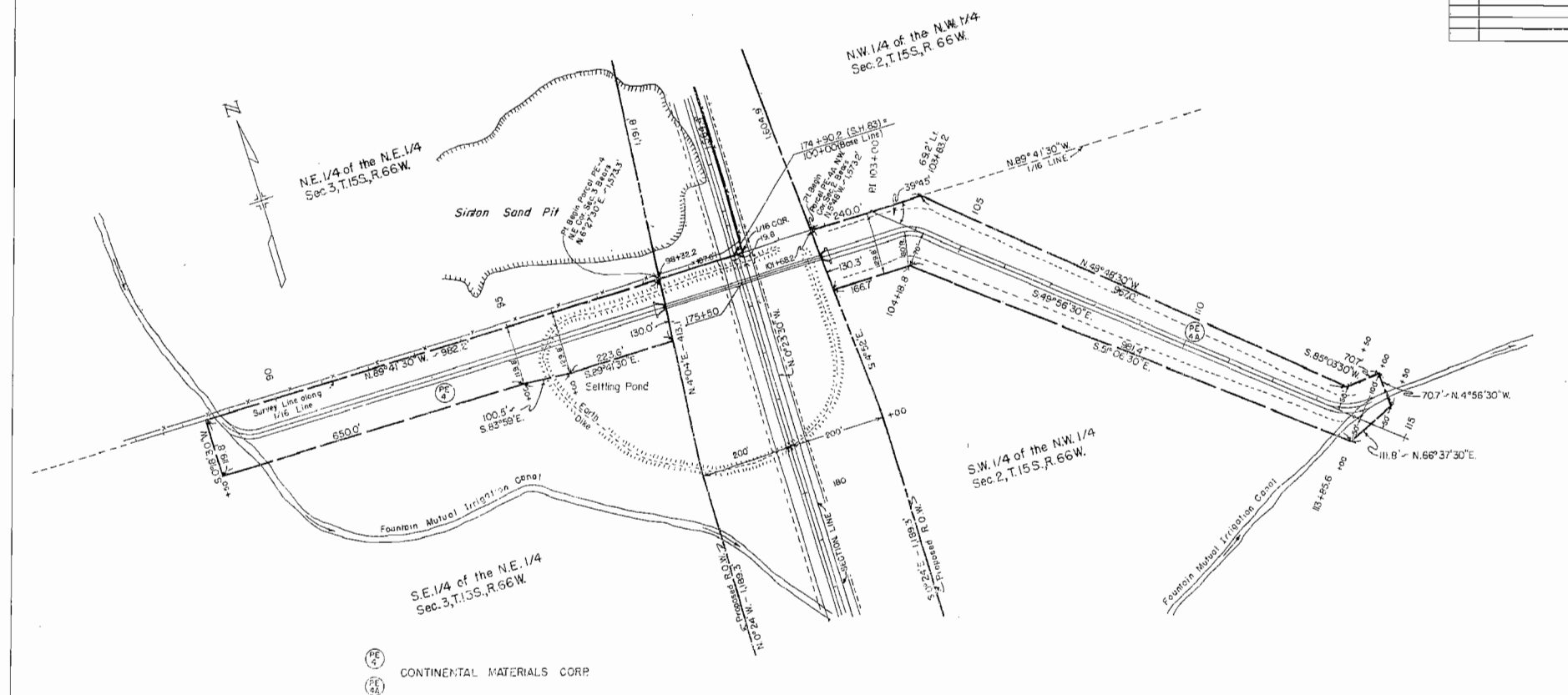
REVISIONS		
7-29-62	CHANGED DIMS ON PAR 7.8	M.G.
8-18-69	Change Sta. on Ramp & End Dim	D.J.F.
3-23-70	Added "Sec 1"	VR
2-30-71	Added TE-4 to TE-5	S.J.F.
2-11-72	Added TE-4A, R10-4B	D.J.F.

FEDERAL ROAD REGION NO.	DISTRICT	PROJ. NO.	SHEET NO.	TOTAL SHEETS
5	COLORADO	SU 0170(9) Sec.1	4 A	

SH. 63 from Jct. S.H. 105 E. & N.

RIGHT OF WAY

REVISIONS		
2-8-68	New Sheet	10 J.E.
3-23-70	Added "Sec.1"	V.R.





 CONTINENTAL MATERIALS CORP.

This plan shows the proposed right-of-way alignment for the highway project. The alignment is shown as a solid line with stationing. The plan also shows existing features such as the Sirtan Sand Pit, Settling Pond, Earth Dike, and Fountain Mutual Irrigation Canal. The plan is divided into four quadrants: NE 1/4 of the NE 1/4, NW 1/4 of the NW 1/4, SE 1/4 of the NE 1/4, and SW 1/4 of the NW 1/4, all within Section 2, T.15S., R.66W.

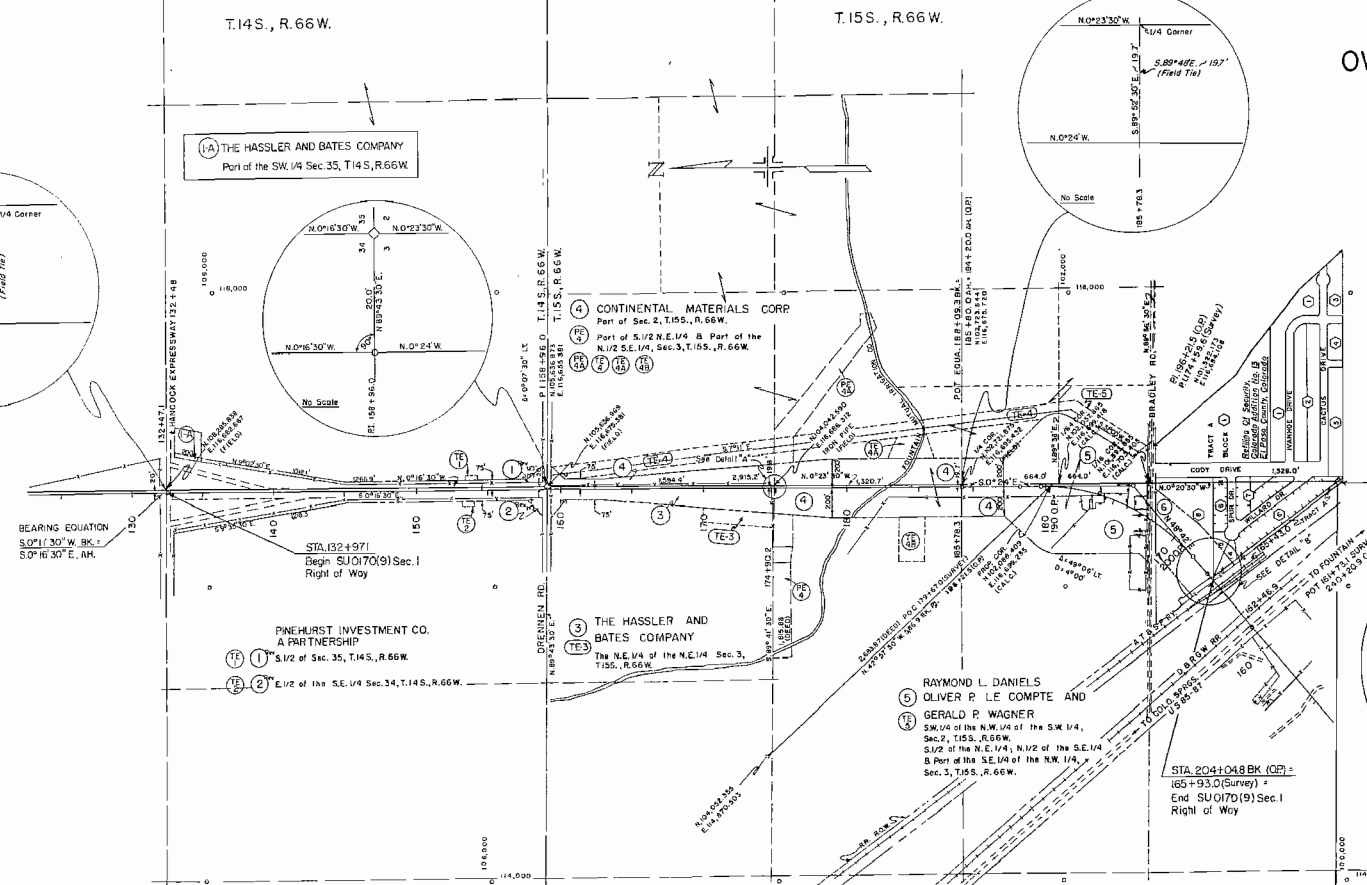
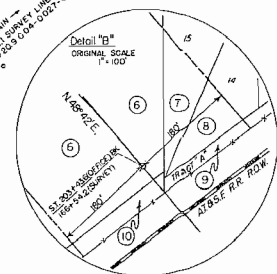
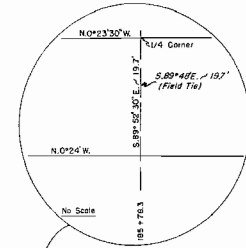
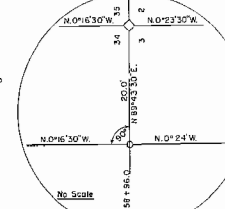
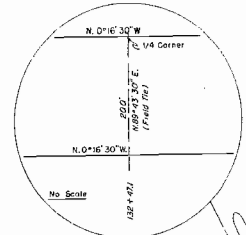
FEDERAL ROAD DISTRICT	PROJ. NO.	SHEET NO.	TOTAL SHEETS
9 COLORADO	SU 0170(9)Sec.1	6	

S.H.83 from Jct S.H.115 - E. 8.N.

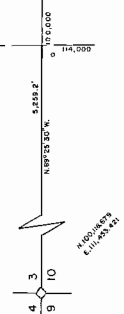
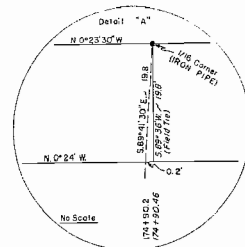
RIGHT OF WAY OWNERSHIP MAP PLAT

SHOWING CLAIMANTS WITH REGARD TO RIGHT OF WAY FOR PROJECT SU 0170 (9) Sec.1 ORIGINAL SCALE 1"=400'

REVISIONS		
7-29-69	CHANGED NAMES ON PAR 1, 2, 7, 8	M.G.
8-13-69	Rev. Par 1B, 2, Add'l 1A, CA, PL of Beg'n.	M.G.
12-18-69	Changed End R.O.W. Sta. - Add'l TE-4, TE-4A, D.F.	
3-23-70	Added "Sec. 1"	V.R.
12-17-71	Added Parcs TE-5, TE-4 & TE-5	V.R.
3-11-72	Added TE-4, TE-2, TE-4A & TE-4B	D.A.T.



- Refiling Of Security, Colorado Addition No. 13 El Paso County, Colorado*
- ⑥ THE COLORADO SPRINGS NATIONAL BANK, AS TRUSTEE
Part of Block 6
 - ⑦ W.J. DRIVER, ADM. OF VETERANS AFFAIRS
Lot 15 in Block 6
 - ⑩ SPROUL INVESTMENT CORP OF COLORADO, A COLORADO CORP
Part of Block 6
 - ⑧ ELIAS PETE JIRON
Lot 14 in Block 6
 - ⑨ FRED G. SPROUL, JR. & ELMER G. SPROUL
Tract lettered "A" in Block 6

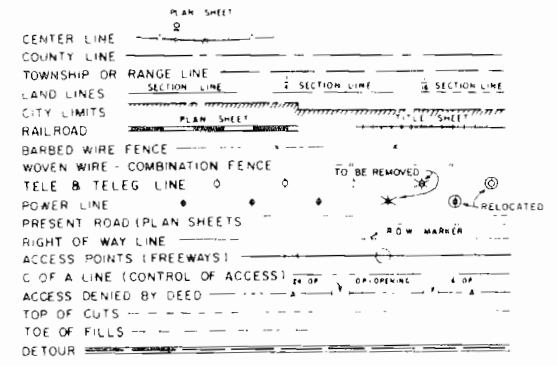


STATE DEPARTMENT OF HIGHWAYS DIVISION OF HIGHWAYS—STATE OF COLORADO

FEDERAL ROAD REGION NO.	DIVISION	PROJECT NO.	SHEET NO.
9	COLORADO	SU 0170(9) Sec 2	1

RIGHT OF WAY
S.H. 83 FROM JCT S.H. 115 - E.B. 115

CONVENTIONAL SIGNS



PLAN AND PROFILE OF PROPOSED FEDERAL AID PROJECT NO. SU 0170(9) SEC.2 STATE HIGHWAY NO. 83 EL PASO COUNTY RIGHT OF WAY

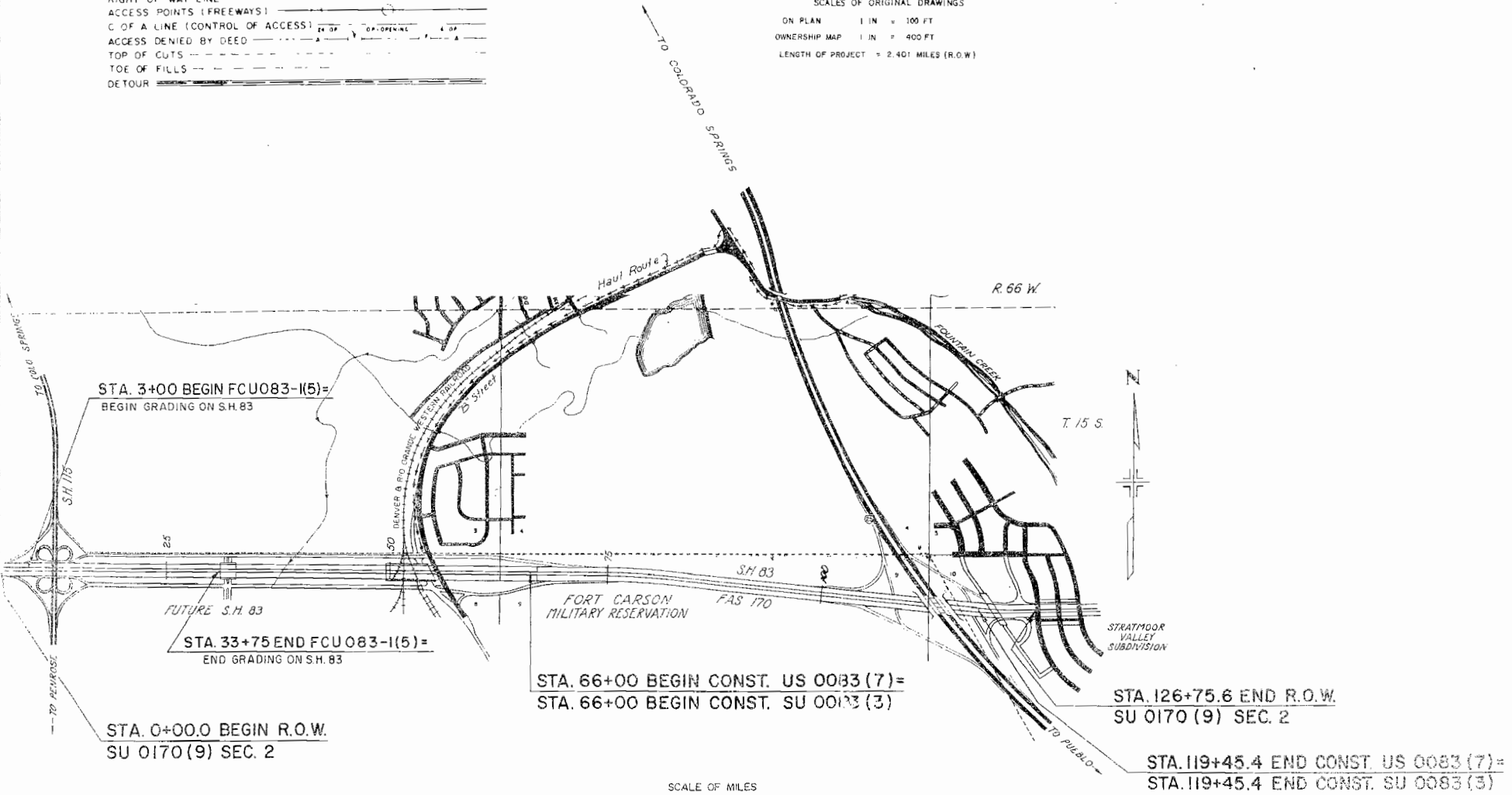
SHEET NO.
1
2
3-8
9-10

INDEX OF SHEETS

TITLE SHEET
TABULATION OF PROPERTIES
LINE SHEETS
OWNERSHIP MAP

REVISIONS		
2-16-71	Added Const. Stations	DJF
6-30-71	Chg Beg. R.O.W. Sta & Length	DJF
2-18-77	Add Const. Sta	GM

SCALES OF ORIGINAL DRAWINGS
ON PLAN 1 IN = 100 FT
OWNERSHIP MAP 1 IN = 400 FT
LENGTH OF PROJECT = 2.401 MILES (R.O.W.)



R. O. W. TABULATION OF PROPERTIES IN EL PASO COUNTY S.H.No. 83 PROJ. SU 0170 (9) Sec. 2

FEDERAL ROAD DISTRICT NO.	DISTRICT	PROJECT NO.	SHEET NO.
1	CULINADO	SU 0170 (9) Sec. 2	2

RIGHT OF WAY S.H. 83 PROJ. SU 0170 (9) S.H. EAST & WEST

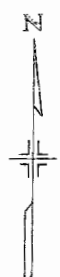
PARCEL NO.	OWNER	ADDRESS	LOCATION	AREA IN ACRES			PURCHASE DATA					REMARKS	NO.
				PARCEL	TO BE ACQUIRED	REMAINDER	LAND	IMPROV'M'TS	DAMAGE	MISC.	TOTAL		
			T. 15 S., R. 66 W., 6th PM.			RT. LT.							
11 Rev. 2	THE UNITED STATES OF AMERICA		N 1/2 SEC. 8 N 1/2 SEC. 9 NW 1/4 SEC. 10	162.97	162.97	— —							REVISIONS 1. 10-17-77 Added Par. 11A & 11B DJF 2. 10-17-77 Added Par. 11A & 11B Gates DJF 3. 10-17-77 Added Par. 11A Access JEB
TE-11	THE UNITED STATES OF AMERICA		NE 1/4 SEC. 8 NW 1/4 SEC. 9	3.16	3.16	— —							
12	J. F. ABRAHAMSON		SE 1/4 SEC. 4	0.22	0.22	209.78±							
13	J. F. ABRAHAMSON		SE 1/4 SEC. 4 SW 1/4 SEC. 3 NW 1/4 SEC. 10	26.97	26.97	20.90± 17.11±							
11A FOURTALES	FOURTALES INVESTMENT COMPANY		SE 1/4 SEC. 6 & NE 1/4 SEC. 7 NW 1/4 SEC. 8	17.198	17.198								
11A GATES	GATES LAND COMPANY		SE 1/4 SEC. 6	0.635	0.635								
11B GATES	GATES LAND COMPANY		SW 1/4 SEC. 5	7.758	7.758								
11A ACCESS	FOURTALES INVESTMENT COMPANY		NE 1/4 SEC. 7	—	—								Addition to access on Par. 11A FOURTALES

S. E. 1/4 SEC. 6
T.15 S., R.66 W.

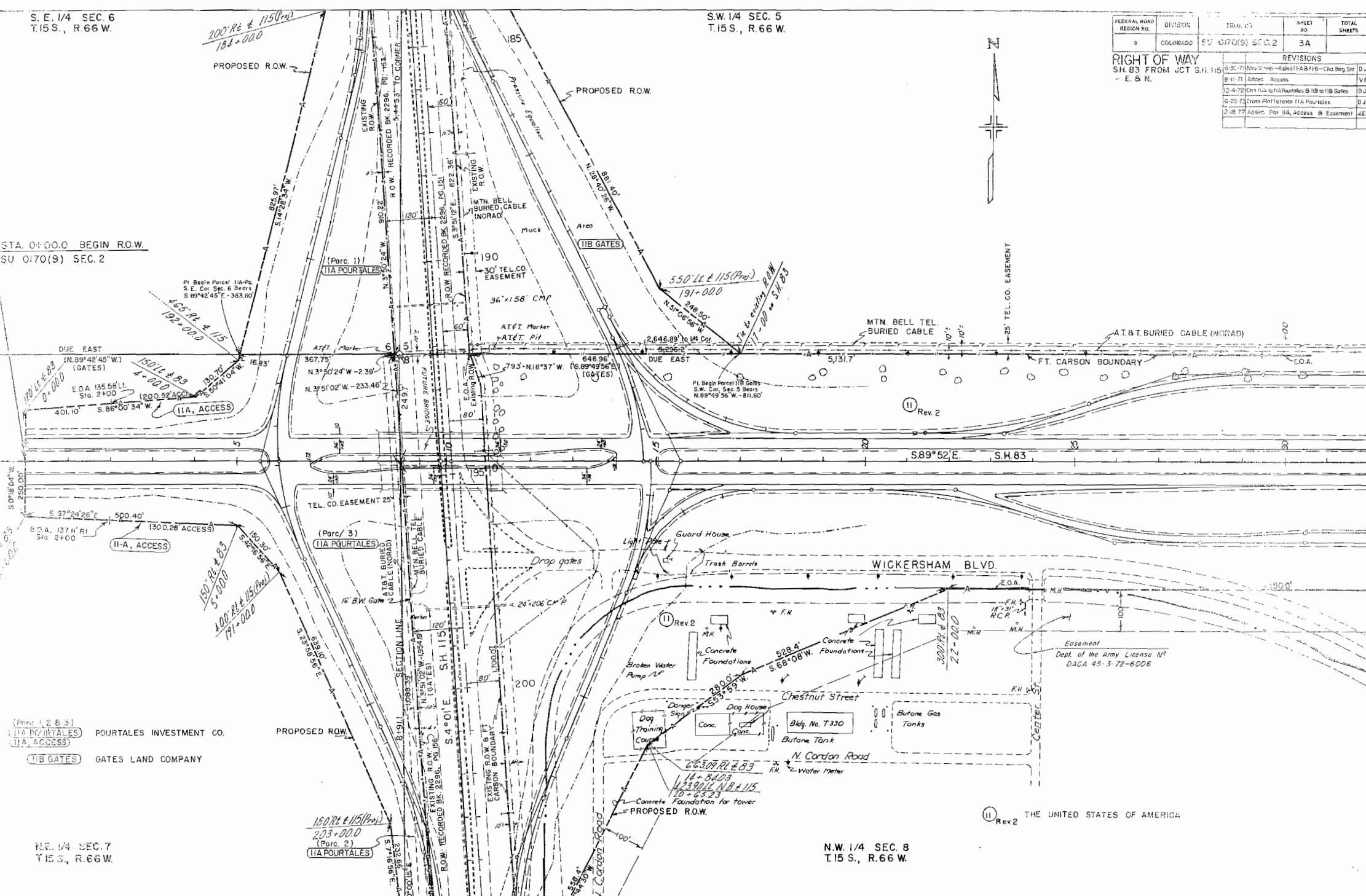
SW. 1/4 SEC. 5
T.15 S., R.66 W.

FEDERAL ROAD REGION NO.	DIVISION	PROJ. NO.	SHEET NO.	TOTAL SHEETS
9	COLORADO	SU 0170(9) SEC. 2	3A	

REVISIONS				
1	8-30-71	Area Screen - Added I-A & II-B - Cha. Beg. Sta.	D.J.F.	
2	8-11-71	Access - Access	V.R.	
3	12-4-72	Chs. IIA to IIA Pourtales & IIB to IIB Gates	D.J.F.	
4	6-22-73	Cross Reference IIA Pourtales	D.J.F.	
5	2-18-77	Access - For IIA, Access & Easement	A.E.B.	



STA. 0+00.0 BEGIN R.O.W.
SU 0170(9) SEC. 2



(Pars. 1, 2 & 3)
 (II-A) POURTALES INVESTMENT CO.
 (II-B) GATES LAND COMPANY

N.E. 1/4 SEC. 7
T.15 S., R.66 W.

N.W. 1/4 SEC. 8
T.15 S., R.66 W.

THE UNITED STATES OF AMERICA

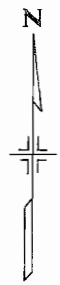
S. E. 1/4 SEC. 6
T.15 S., R.66 W.

S.W. 1/4 SEC. 5
T.15 S., R.66 W.

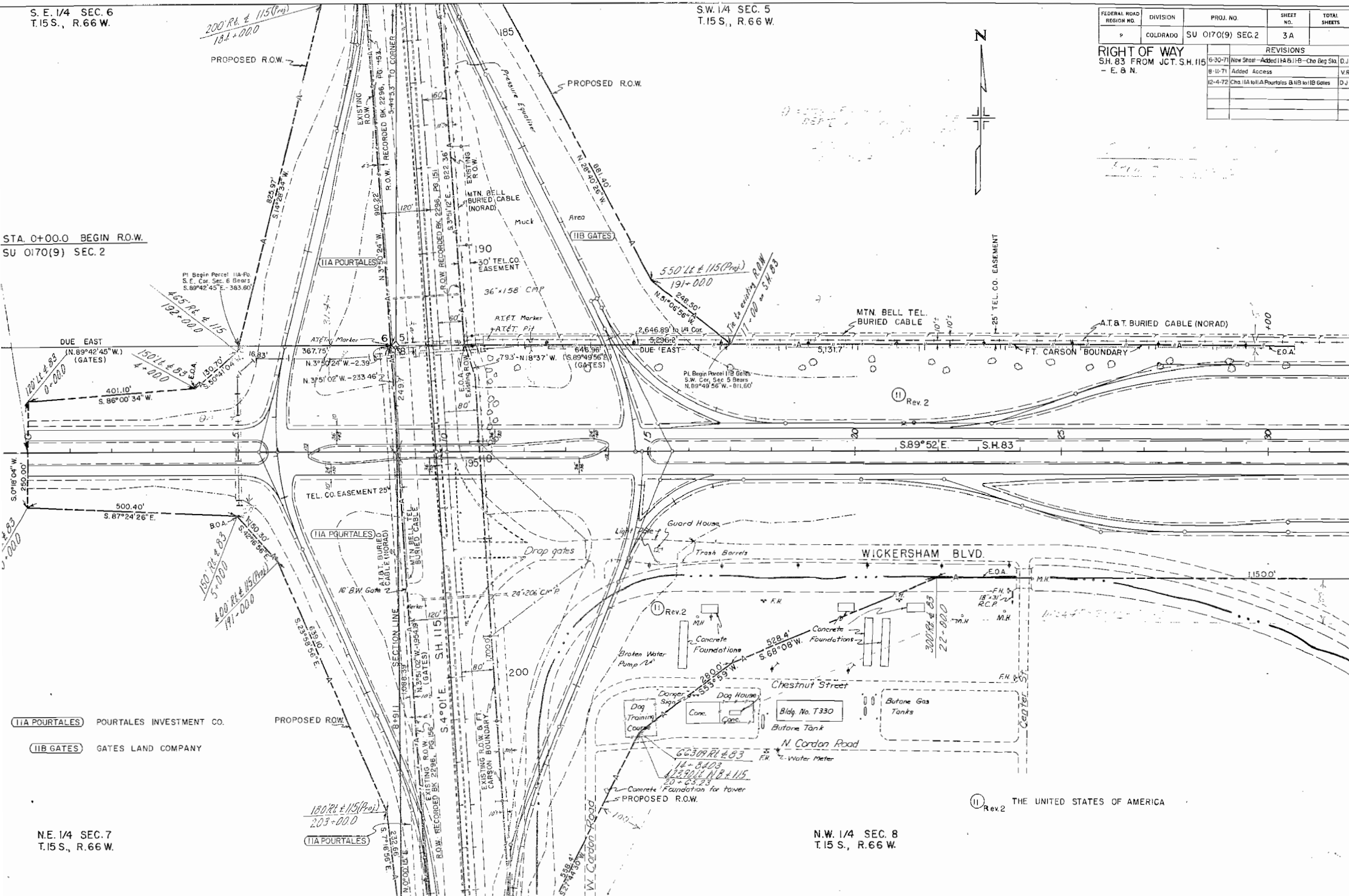
FEDERAL ROAD REGION NO.	DIVISION	PROJ. NO.	SHEET NO.	TOTAL SHEETS
9	COLORADO	SU 0170(9) SEC. 2	3A	

REVISIONS	
6-30-71	New Sheet - Added IIA & IIB - Cho Beg Sta. D.J.F.
8-11-71	Added Access V.R.
12-4-72	Cho IIA to IIA Fourties & IIB to IIB Gates D.J.F.

RIGHT OF WAY
S.H. 83 FROM JCT. S.H. 115
- E. & N.



STA. 0+00.0 BEGIN R.O.W.
SU 0170(9) SEC. 2



(IIA POURTALES) POURTALES INVESTMENT CO.
(IIB GATES) GATES LAND COMPANY

N.E. 1/4 SEC. 7
T.15 S., R.66 W.

N.W. 1/4 SEC. 8
T.15 S., R.66 W.

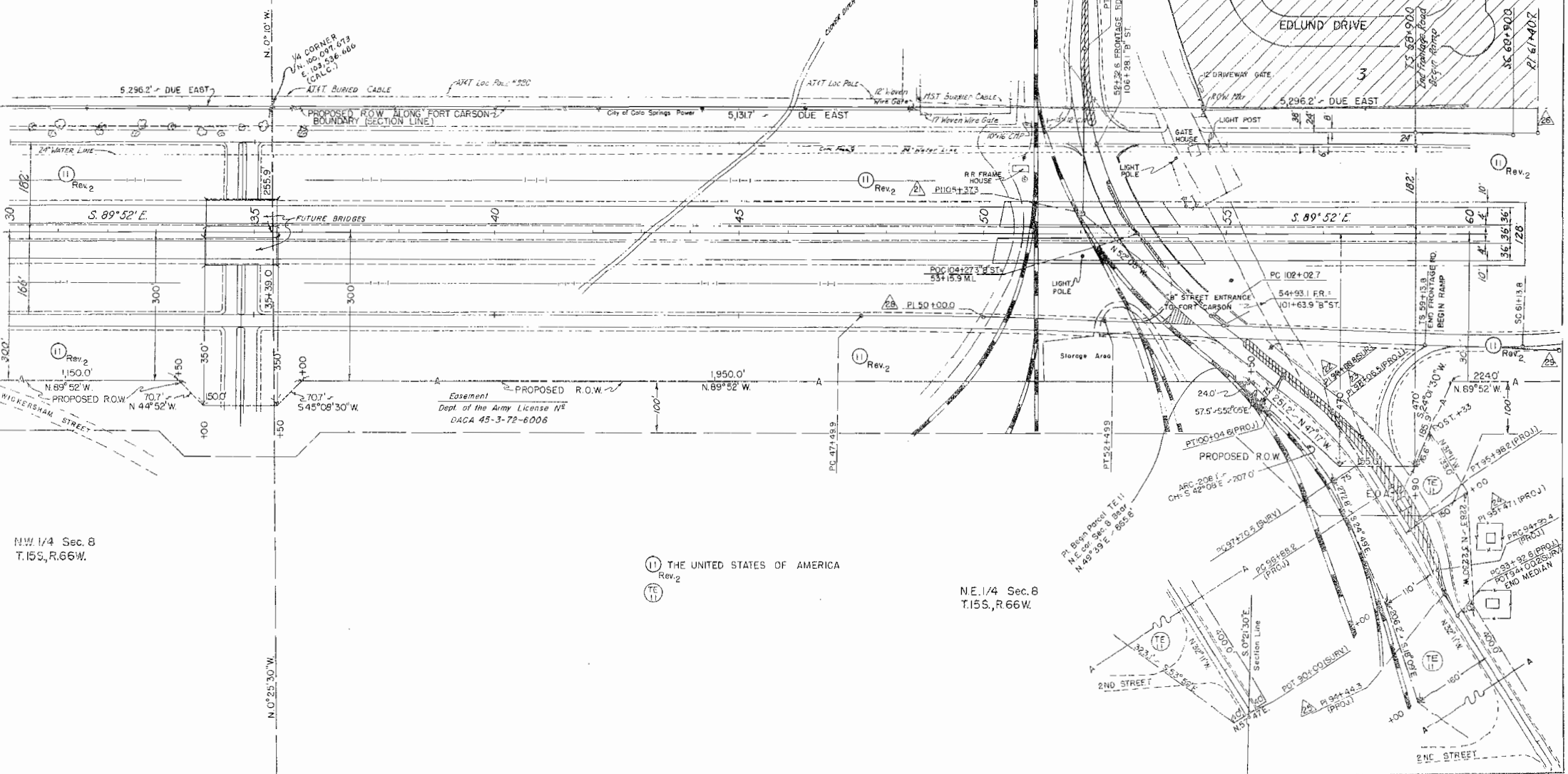
(11) Rev. 2 THE UNITED STATES OF AMERICA

"B" Street Curve Data

	21	22	23	24	25	26	27	28	29	30
Δs						1200.00'	1200.00'		1400.00'	1330.00'
Ts						250.7	250.7		276.0	244.3
Es									119	85
Δc	52°47'37"	19°54'	18°54'	15°42'25"	15°42'25"	4°00'00"	4°00'00"	2°30'00"	6°00'00"	3°30'00"
Dc	8°30'	8°30'	8°30'	15°16'48"	15°16'48"	4°00'00"	4°00'00"	0°30'00"	4°00'00"	4°00'00"
Tc	334.6	118.3	118.3	51.7	51.7			250.1	75.1	43.8
Lc	621.1	234.1	234.1	102.8	102.8	100.0	100.0		150.0	67.5
Rc	674.1	674.1	674.1	375.0	375.0	1432.4	1432.4	11,460.0	1432.4	1432.4
Ls						200.0	200.0		200.0	200.0
Es						400.00'	400.00'		400.00'	400.00'
LT						133.4	133.4		133.4	133.4
ST						66.7	66.7		66.7	66.7
Trans. L	1000					0.050 ^h	0.050 ^h	none	0.040 ^h	0.050 ^h
S	0.015 ^h									
M.D.S.	25 mph					40 mph	40 mph	70 mph	35 mph	40 mph
S.S.D.										

S.W. 1/4 Sec. 5
T.15S., R. 66W.

SE. 1/4 Sec. 5
T.15S., R. 66W.



FEDERAL ROAD DISTRICT NO.	DIVISION	PROJECT NO.	SHEET NO.	TOTAL SHEETS
5	COV. GRADU.	SU 0170(9) Sec 2	4	

REVISIONS		
2-18-77	Added Easement	J.E.B.

N.W. 1/4 Sec. 8
T.15S., R. 66W.

N.E. 1/4 Sec. 8
T.15S., R. 66W.

THE UNITED STATES OF AMERICA
Rev. 2

7
STRATMOOR SOUTH
SUBDIVISION

S.E. 1/4 Sec. 5
T.15S., R. 66W.

LASHELLE

8

PACED

POINT OF BEGINNING

TS 58+00.0

SC 60+900

5,131.7

DUE EAST

4" Drain

24" Water Line

30" Water

TS 59+13.8

SC 61+318

5,67°22'E

224.0'

100'

SO 21°30'E

61+86.8

TS 59+13.8

SC 61+318

5,67°22'E

224.0'

100'

SO 21°30'E

61+86.8

TS 59+13.8

SC 61+318

5,67°22'E

6

N. 0°23'W - 5,824.5'

To Corner

12' 00"

TS = 250.7'

Δc = 4' 00"

Dc = 4' 00"

Lc = 100'

Rc = 1432.4'

S = 0.050 ft/ft

MDS = 40 MPH

S.S.D. =

CS 61+900

ST 63+900

TS 65+62.1

SC 67+62.1

CS 68+62.1

ST 70+62.1

66 LI 70+500 ML

TS 65+62.1

Δ = 12° 00'

TS = 250.7'

Δc = 4' 00"

Dc = 4' 00"

Lc = 100'

Rc = 1432.4'

S = 0.050 ft/ft

MDS = 40 MPH

S.S.D. =

CS 61+900

ST 63+900

6

N. 0°23'W - 5,824.5'

To Corner

12' 00"

TS = 250.7'

Δc = 4' 00"

Dc = 4' 00"

Lc = 100'

Rc = 1432.4'

S = 0.050 ft/ft

MDS = 40 MPH

S.S.D. =

CS 61+900

ST 63+900

TS 65+62.1

SC 67+62.1

CS 68+62.1

ST 70+62.1

66 LI 70+500 ML

TS 65+62.1

Δ = 12° 00'

TS = 250.7'

Δc = 4' 00"

Dc = 4' 00"

Lc = 100'

Rc = 1432.4'

S = 0.050 ft/ft

MDS = 40 MPH

S.S.D. =

CS 61+900

ST 63+900

6

N. 0°23'W - 5,824.5'

To Corner

12' 00"

TS = 250.7'

Δc = 4' 00"

Dc = 4' 00"

Lc = 100'

Rc = 1432.4'

S = 0.050 ft/ft

MDS = 40 MPH

S.S.D. =

CS 61+900

ST 63+900

TS 65+62.1

SC 67+62.1

CS 68+62.1

ST 70+62.1

66 LI 70+500 ML

TS 65+62.1

Δ = 12° 00'

TS = 250.7'

Δc = 4' 00"

Dc = 4' 00"

Lc = 100'

Rc = 1432.4'

S = 0.050 ft/ft

MDS = 40 MPH

S.S.D. =

CS 61+900

ST 63+900

6

N. 0°23'W - 5,824.5'

To Corner

12' 00"

TS = 250.7'

Δc = 4' 00"

Dc = 4' 00"

Lc = 100'

Rc = 1432.4'

S = 0.050 ft/ft

MDS = 40 MPH

S.S.D. =

CS 61+900

ST 63+900

TS 65+62.1

SC 67+62.1

CS 68+62.1

ST 70+62.1

66 LI 70+500 ML

TS 65+62.1

Δ = 12° 00'

TS = 250.7'

Δc = 4' 00"

Dc = 4' 00"

Lc = 100'

Rc = 1432.4'

S = 0.050 ft/ft

MDS = 40 MPH

S.S.D. =

CS 61+900

ST 63+900

6

N. 0°23'W - 5,824.5'

To Corner

12' 00"

TS = 250.7'

Δc = 4' 00"

Dc = 4' 00"

Lc = 100'

Rc = 1432.4'

S = 0.050 ft/ft

MDS = 40 MPH

S.S.D. =

CS 61+900

ST 63+900

TS 65+62.1

SC 67+62.1

CS 68+62.1

ST 70+62.1

66 LI 70+500 ML

TS 65+62.1

Δ = 12° 00'

TS = 250.7'

Δc = 4' 00"

Dc = 4' 00"

Lc = 100'

Rc = 1432.4'

S = 0.050 ft/ft

MDS = 40 MPH

S.S.D. =

CS 61+900

ST 63+900

6

N. 0°23'W - 5,824.5'

To Corner

12' 00"

TS = 250.7'

Δc = 4' 00"

Dc = 4' 00"

Lc = 100'

Rc = 1432.4'

S = 0.050 ft/ft

MDS = 40 MPH

S.S.D. =

CS 61+900

ST 63+900

TS 65+62.1

SC 67+62.1

CS 68+62.1

ST 70+62.1

66 LI 70+500 ML

TS 65+62.1

Δ = 12° 00'

TS = 250.7'

Δc = 4' 00"

Dc = 4' 00"

Lc = 100'

Rc = 1432.4'

S = 0.050 ft/ft

MDS = 40 MPH

S.S.D. =

CS 61+900

ST 63+900

6

N. 0°23'W - 5,824.5'

To Corner

12' 00"

TS = 250.7'

Δc = 4' 00"

Dc = 4' 00"

Lc = 100'

Rc = 1432.4'

S = 0.050 ft/ft

MDS = 40 MPH

S.S.D. =

CS 61+900

ST 63+900

TS 65+62.1

SC 67+62.1

CS 68+62.1

ST 70+62.1

66 LI 70+500 ML

TS 65+62.1

Δ = 12° 00'

TS = 250.7'

Δc = 4' 00"

Dc = 4' 00"

Lc = 100'

Rc = 1432.4'

S = 0.050 ft/ft

MDS = 40 MPH

S.S.D. =

CS 61+900

ST 63+900

6

N. 0°23'W - 5,824.5'

To Corner

12' 00"

TS = 250.7'

Δc = 4' 00"

Dc = 4' 00"

Lc = 100'

Rc = 1432.4'

S = 0.050 ft/ft

MDS = 40 MPH

S.S.D. =

CS 61+900

ST 63+900

TS 65+62.1

SC 67+62.1

CS 68+62.1

ST 70+62.1

66 LI 70+500 ML

TS 65+62.1

Δ = 12° 00'

TS = 250.7'

Δc = 4' 00"

Dc = 4' 00"

Lc = 100'

Rc = 1432.4'

S = 0.050 ft/ft

MDS = 40 MPH

S.S.D. =

CS 61+900

ST 63+900

6

N. 0°23'W

FEDERAL ROAD REGION NO.	DISTRICT	PROJ NO	SHEET NO	TOTAL SHEETS
9	COLORADO	SU 0170(9) Sec 2	7	

RIGHT OF WAY		
S.H. 83 JCT. S.H. 115 - E.B.N.		
REVISIONS		
2-16-71	Added End Const. Sta.	D.J.F.

CURVE DATA

No.	Δ	Ts	Es	Dc	θs	Ls	L.T.	S.T.	Δc	Lc	Pc	Tc
A1	6°40'00"	347.5'	7.2'	1°30'00"	1°52'30"	250.0'	166.7'	83.3'	2°53'00"	194.5'	3,819.7'	
A2	14°34'00"	283.2'	12.8'	4°00'00"	4°00'00"	200.0'	133.4'	66.7'	6°34'00"	164.2'	1,432.4'	
A3	109°23'38"									821.0'	430.0'	6072'
A4	36°57'53"				38°11'50"					96.8'	150.0'	50.1'
A5	52°48'41"				34°43'29"					152.1'	165.0'	81.9'
A6	18°00'00"	327.0'	19.0'	4°00'00"	4°00'00"	200.0'	133.4'	66.7'	10°00'00"	250.0'	1,432.4'	
A7	30°31'00"				0°30'00"					6,103.3'	11,459.2'	3,125.9'

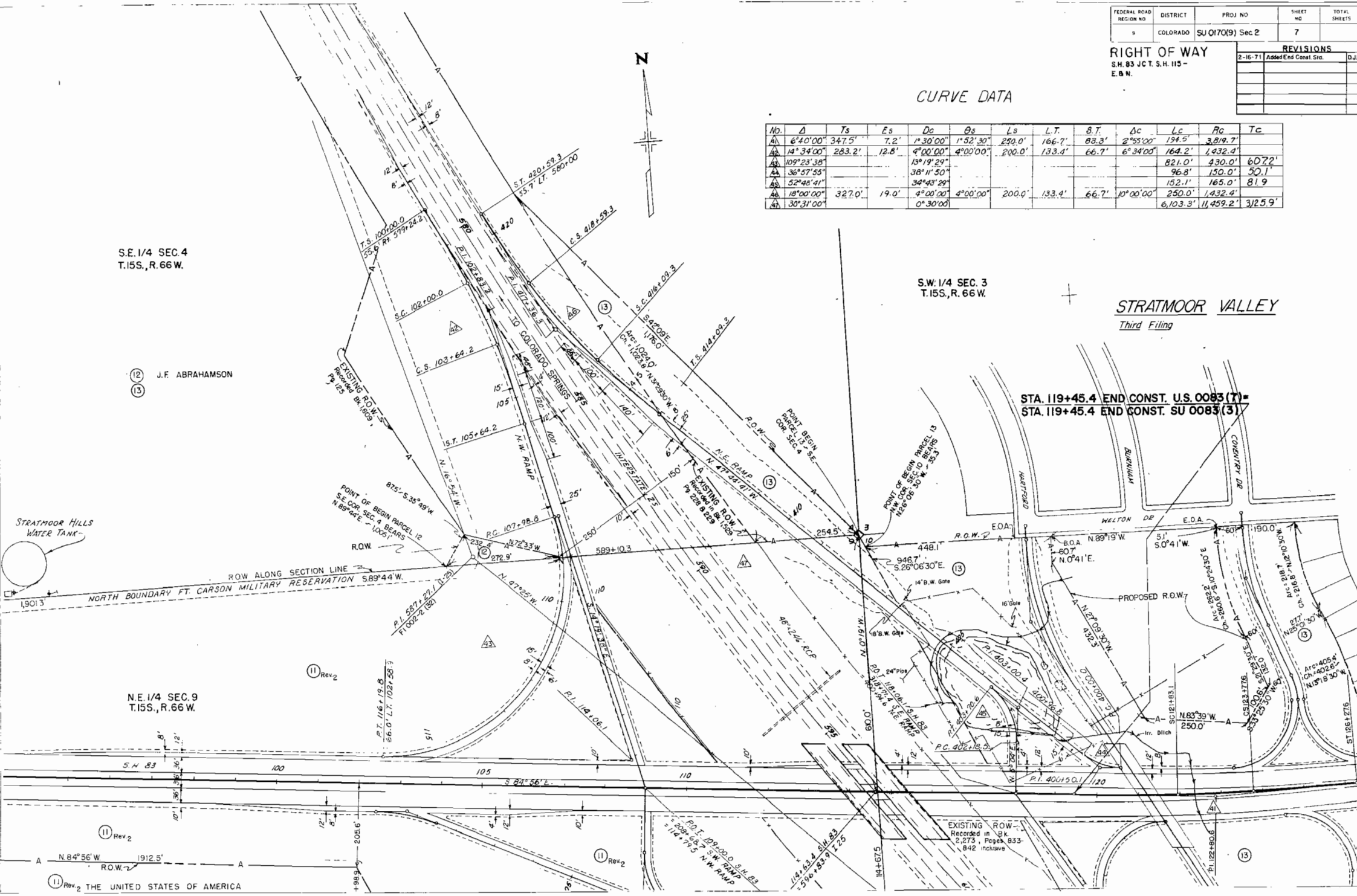


S.E. 1/4 SEC. 4
T.15S., R.66W.

S.W. 1/4 SEC. 3
T.15S., R.66W.

STRATMOOR VALLEY
Third Filing

STA. 119+45.4 END CONST. U.S. 0083 (7) =
STA. 119+45.4 END CONST. SU 0083 (3)



12 J.F. ABRAHAMSON

13

N.E. 1/4 SEC. 9
T.15S., R.66W.

11 Rev.2

11 Rev.2 THE UNITED STATES OF AMERICA

EXISTING R.O.W.
Recorded in Bk
2,273, Pages 853-842
inclusive

FEDERAL ROAD REGION NO.	DISTRICT	PROJ. NO.	SHEET NO.	TOTAL SHEETS
9	COLORADO	SU0170(9) Sec 2	8	

RIGHT OF WAY
S.H.83 JCT. S.H.115 E.&R.

Station 126+75.6 End R.O.W.
SU 0170(9) Sec.2

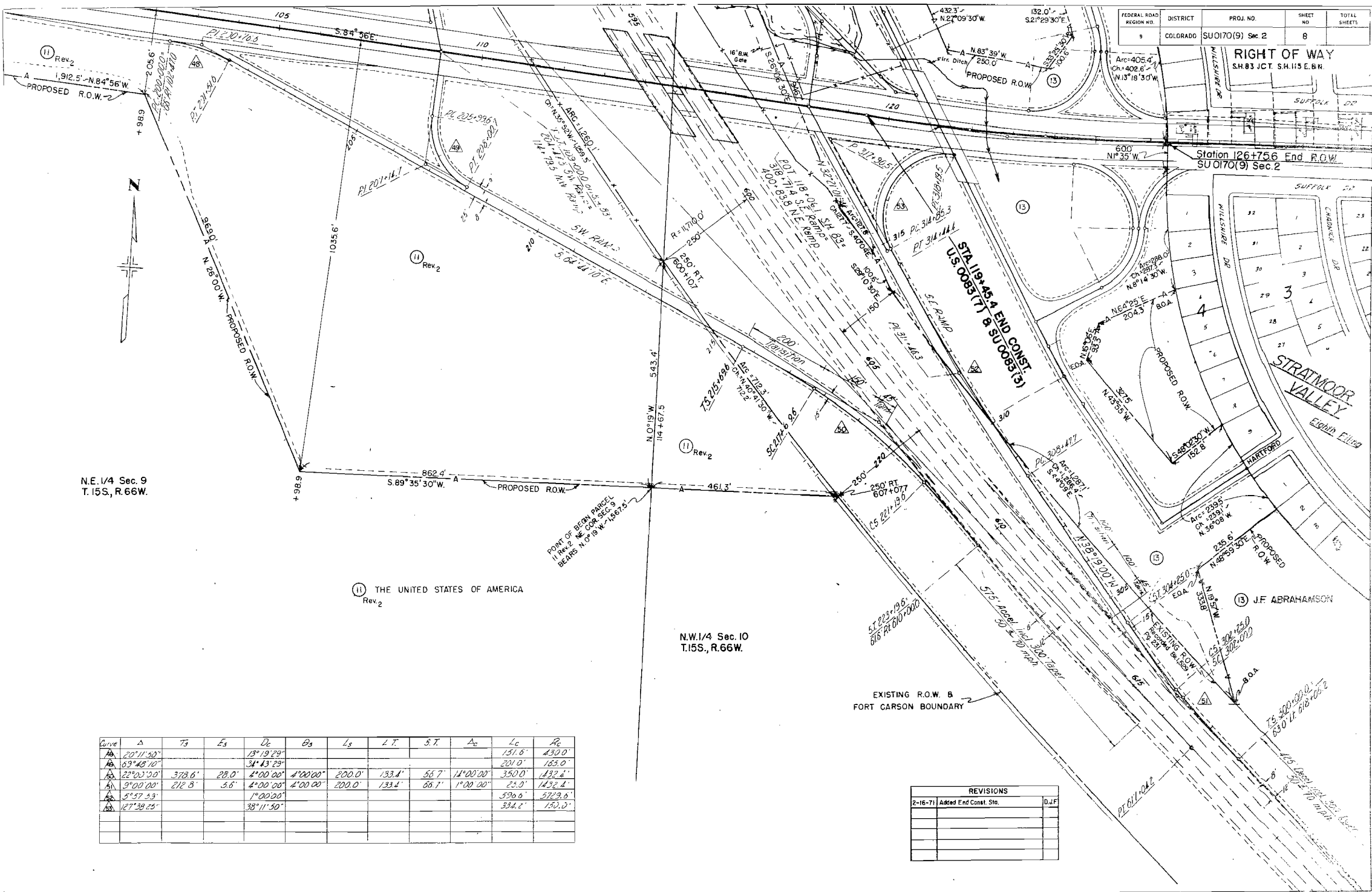
N.E. 1/4 Sec. 9
T.15S, R.66W.

THE UNITED STATES OF AMERICA
Rev.2

N.W.1/4 Sec. 10
T.15S, R.66W.

Curve	Δ	Ts	Es	Dc	Bs	Ls	L.T.	S.T.	Ac	Lc	Rc
A	20°11'50"			13°19'29"						151.6'	430.0'
A	63°48'10"			34°43'29"						201.0'	165.0'
A	22°05'50"	378.6'	28.0'	4°00'00"	4°00'00"	200.0'	133.4'	56.7'	14°00'00"	350.0'	1432.4'
A	9°00'00"	212.8'	5.6'	4°00'00"	4°00'00"	200.0'	133.4'	66.1'	1°00'00"	25.0'	1432.4'
A	5°57'53"			1°00'00"						590.6'	5729.6'
A	127°38'25"			38°11'50"						334.2'	150.0'

REVISIONS	
2-16-71	Added End Const. Sta.



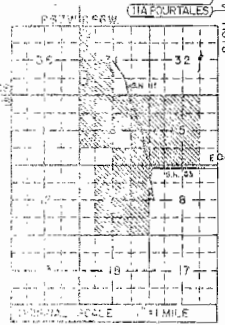
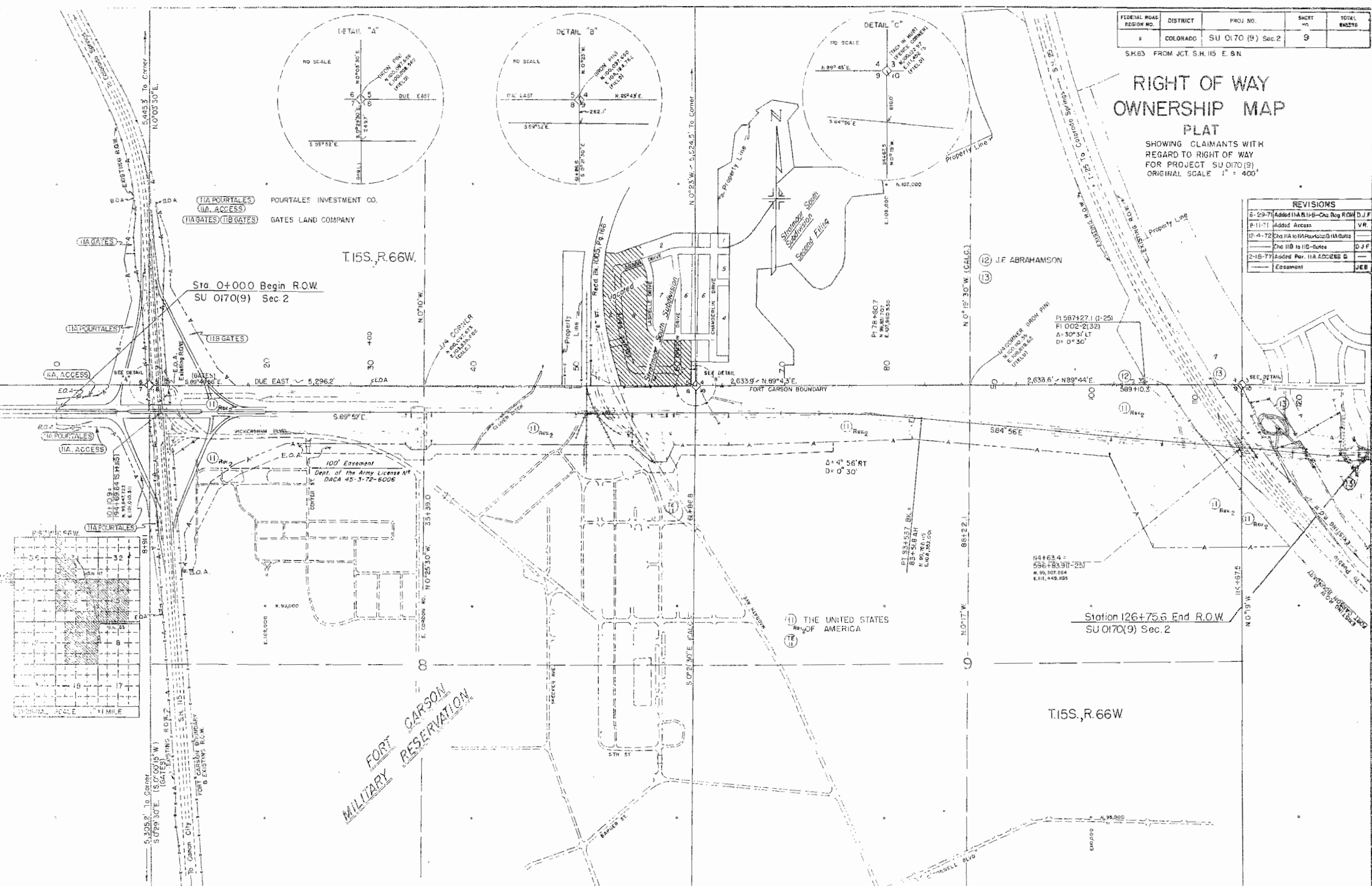
FEDERAL ROAD REGION NO.	DISTRICT	PROJ. NO.	SHEET NO.	TOTAL SHEETS
9	COLORADO	SU 0170 (9) Sec. 2	9	

S.H.63 FROM JCT. S.H.115 E. 8 N

RIGHT OF WAY OWNERSHIP MAP PLAT

SHOWING CLAIMANTS WITH REGARD TO RIGHT OF WAY FOR PROJECT SU 0170 (9) ORIGINAL SCALE 1" = 400'

REVISIONS			
5-29-74	Added IIA to B-Cog Beg ROW	D J F	
8-11-71	Added Access	VR	
12-4-72	Chg IIA to IIA Points to IIA Gates	D J F	
	Chg IIB to IIB-Gates	D J F	
2-16-77	Added Per. IIA ACCESS	D J F	
	Easement	JEB	



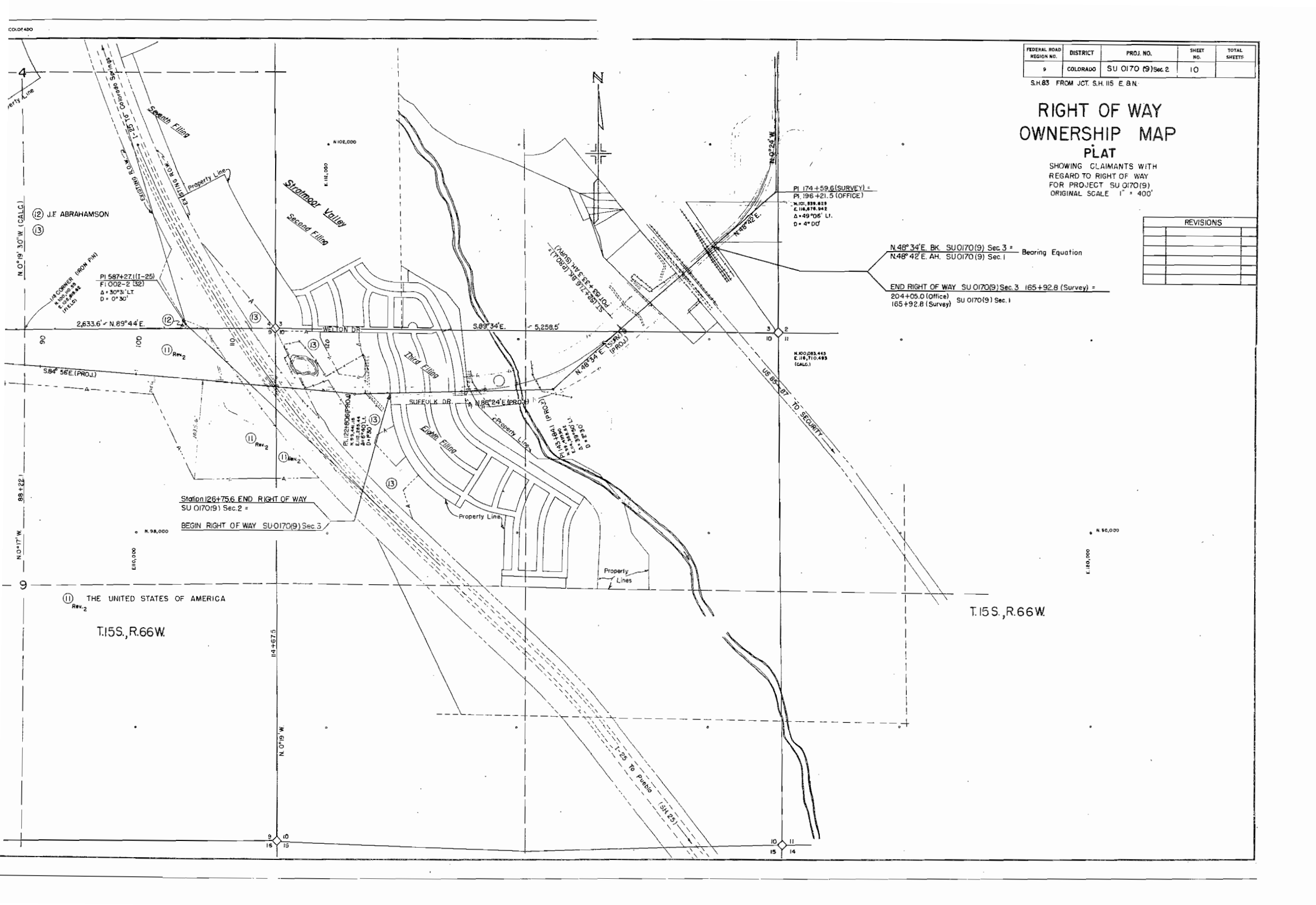
FEDERAL ROAD REGION NO.	DISTRICT	PROJ. NO.	SHEET NO.	TOTAL SHEETS
9	COLORADO	SU 0170 (9) Sec. 2	10	

S.H.83 FROM JCT. S.H. 115 E. & N.

RIGHT OF WAY OWNERSHIP MAP PLAT

SHOWING CLAIMANTS WITH REGARD TO RIGHT OF WAY FOR PROJECT SU 0170 (9) ORIGINAL SCALE 1" = 400'

REVISIONS	



N 48° 34' E. BK. SU 0170 (9) Sec. 3 =
N 48° 42' E. AH. SU 0170 (9) Sec. 1 Bearing Equation

END RIGHT OF WAY SU 0170 (9) Sec. 3 (65+92.8 (Survey) =
204+05.0 (Office) SU 0170 (9) Sec. 1
165+92.8 (Survey)

Station 126+75.6 END RIGHT OF WAY
SU 0170 (9) Sec. 2 =

BEGIN RIGHT OF WAY SU 0170 (9) Sec. 3

THE UNITED STATES OF AMERICA
Rev. 2

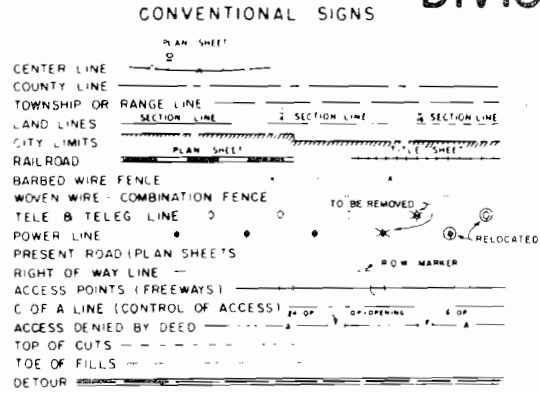
T.15S., R.66W.

T.15S., R.66W.

STATE DEPARTMENT OF HIGHWAYS DIVISION OF HIGHWAYS—STATE OF COLORADO

FEDERAL ROAD REGION NO.	DIVISION	PROJECT NO.	SHEET NO.
9	COLORADO	SU 0170(9) Sec. 3	1

INDEX OF SHEETS	REVISIONS
Title Sheet	
Tabulation of Properties	
Line Sheets	
Ownership Map	

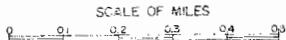
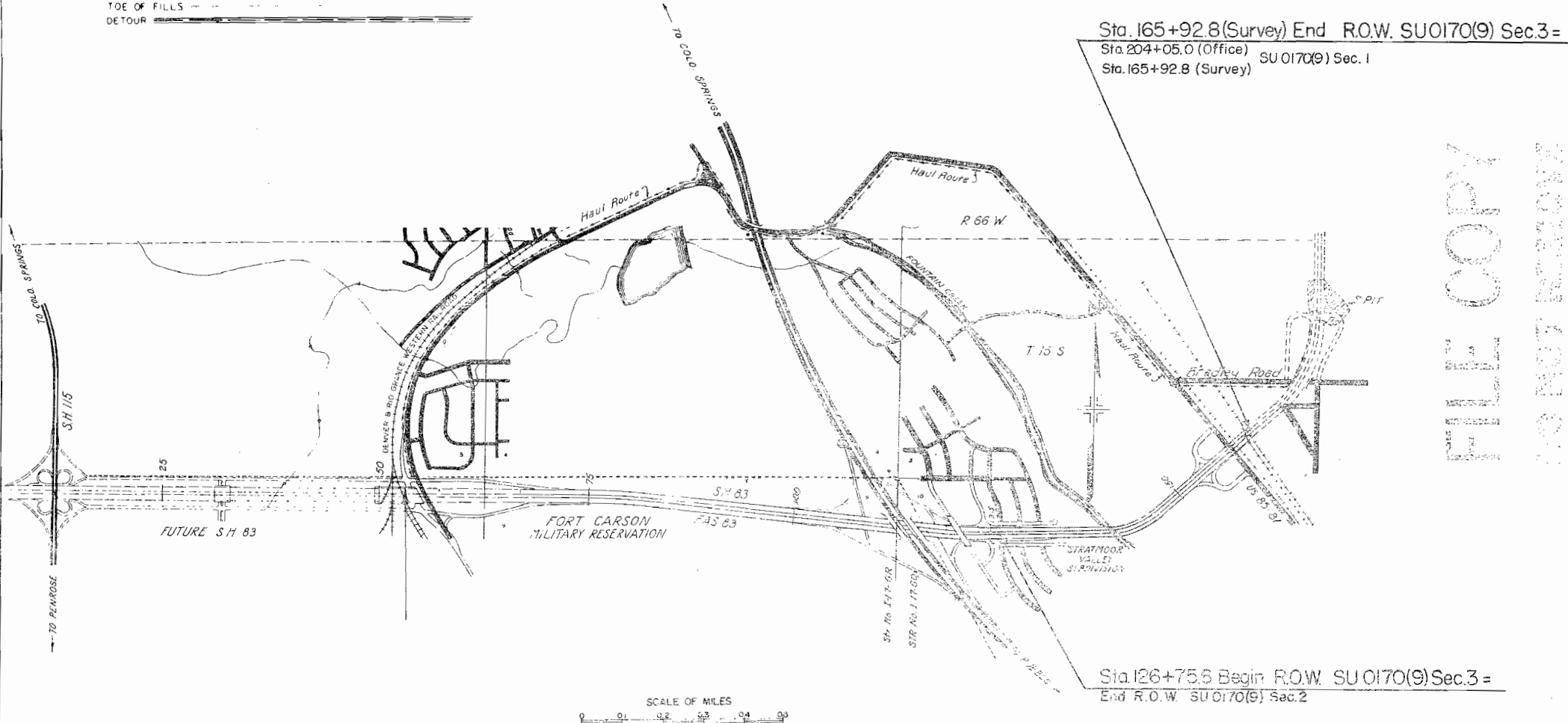


PLAN AND PROFILE OF PROPOSED FEDERAL AID PROJECT NO. SU 0170(9) Sec. 3 STATE HIGHWAY NO. 83 EL PASO COUNTY

SHEET NO.
1
2-3
4-9
10

SCALES OF ORIGINAL DRAWINGS

ON PLAN 1 IN. = 100 FT.
ON OWNERSHIP 1 IN. = 400 FT.
LENGTH OF ROW = 0.73 MILES



FILE COPY

R. O. W. TABULATION OF PROPERTIES IN EL PASO

COUNTY S.H.No. 83 PROJ. SU 0170 (9) Sec. 3

FEDERAL ROAD DISTRICT NO.	DISTRICT	PROJECT NO.	SHEET NO.
8	COLORADO	SU 0170 (9) Sec. 3	3

RIGHT OF WAY S.H.83 FROM S.H. 115 - E. and N.

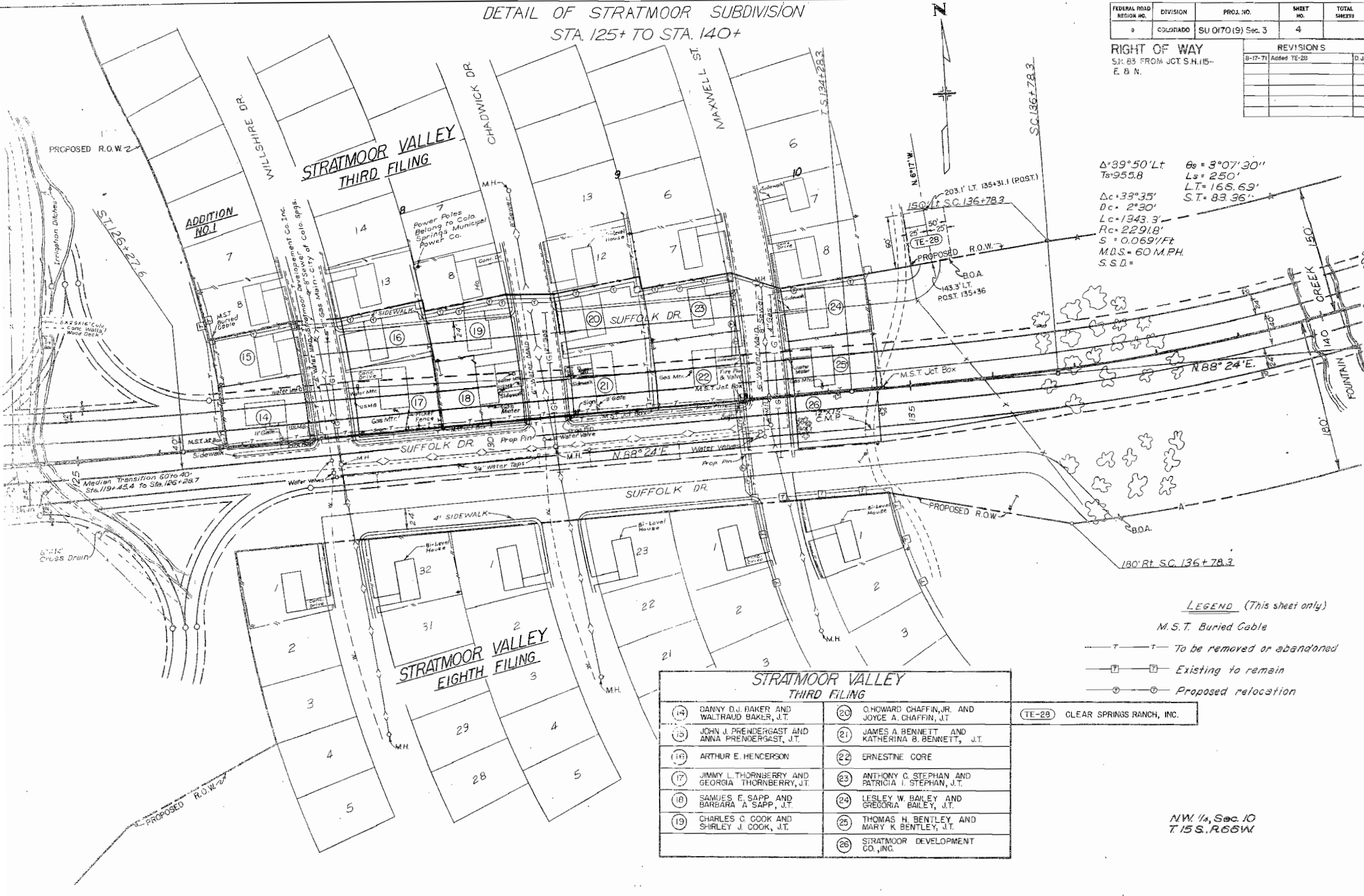
PARCEL NO.	OWNER	ADDRESS	LOCATION	AREA IN ACRES				PURCHASE DATA					REMARKS	NO.	
				PARCEL	TO BE ACQUIRED	REMAINDER		LAND	IMPROV'MTS	DAMAGE	MISC.	TOTAL			
			T. 15 S., R. 66 W., 6 W.P.M.			LT.	RT.								
27 Rev.2	JAMES H. SINTON AS AGENT		NW 1/4 SEC. 10	0.44	0.44	2.42	15.97								
28 Rev.3	CLEAR SPRINGS RANCH, INC.		N 1/2 SEC. 10 and SE 1/4 SEC. 3	24.12	24.12	88.29	318.39						SEE MEMORANDUM OF OWNERSHIP FOR ENCUMBRANCES	28	
29	BLANCHE PINELLO		SE 1/4 SEC. 3 and NE 1/4 SEC. 10	10.75	10.75	---	---								
30	KAW CORPORATION INC., A KANSAS CORPORATION		SE 1/4 SEC. 3 and NE 1/4 SEC. 10	1.03	1.03	---	---								
31	CLEAR SPRINGS RANCH, INC.		SE 1/4 SEC. 3 ; NE 1/4 SEC. 10 and NW 1/4 SEC. 11	2.18	2.18	SEE PAR 28 Rev.3							SEE PARCEL 28 Rev.3	31	
32	ANTHONY PINELLO and ADELHEID G. M. PINELLO, J. T.		SE 1/4 SEC. 3	0.45	0.45	---	2.99						T. D. -- BK. 2000, PG. 885	32	
32-A	J. F. ABRAHAMSON		SE 1/4 SEC. 3	0.01	0.01	---	---						T. D. -- BK. 2347, PG. 614	32-A	
33 Rev.	ARTHUR C. PECK and FANNIE PECK, a.k.a. FANNIE PINELLO PECK, f.k.a. FANNIE PINELLO		SE 1/4 SEC. 3	0.35	0.35	---	1.78						NUMEROUS ENCUMBRANCES, SEE MEMORANDUM OF OWNERSHIP	33 Rev.	
34 Rev.3	GERALDINE RAE SMITH		SE 1/4 SEC. 3	1.07	1.07	---	4.62						T. D. -- BK. 2235, PG. 595	34 Rev.3	
ER-35	THE DENVER AND RIO GRANDE WESTERN RAILROAD CO.		SE 1/4 SEC. 3	0.46	0.46	---	---								
38 Rev.2	RIO GRANDE LAND COMPANY		SE 1/4 SEC. 3	0.66	0.66	10.61	21.33								
36-A	THE DENVER AND RIO GRANDE WESTERN RAILROAD CO.		SE 1/4 SEC. 3	0.56	0.56	1.34	5.15								
ER-37	THE ATCHISON TOPEKA AND SANTA FE RAILWAY		SE 1/4 SEC. 3	0.92	0.92	---	---								
EP-38	THE DENVER AND RIO GRANDE WESTERN RAILROAD CO.		SE 1/4 SEC. 3	0.76	0.76	---	---								
TEMPORARY EASEMENTS															
TE-28	CLEAR SPRINGS RANCH, INC.		NW 1/4 SEC. 10	0.07	0.07								CONSTRUCT ROAD APPROACH	TE-28	
TE-28-A	CLEAR SPRINGS RANCH, INC.		NE 1/4 SEC. 10	1.14	1.14								CONSTRUCT CROSS ROAD	TE-28-A	
TE-28-B Rev.	CLEAR SPRINGS RANCH, INC.		SE 1/4 SEC. 3 & NE 1/4 SEC. 10	1.26	1.26								CONSTRUCT CROSS ROAD	TE-28-B Rev.	
TE-33	ARTHUR C. PECK and FANNIE PECK, a.k.a. FANNIE PINELLO PECK, f.k.a. FANNIE PINELLO		SE 1/4 SEC. 3	0.06	0.06								CONSTRUCT ROAD APPROACH	TE-33	
TE-34 Rev.	GERALDINE RAE SMITH		SE 1/4 SEC. 3	0.11	0.11								CONSTRUCT ROADWAY SLOPES	TE-34 Rev.	

REVISIONS		
8-17-71	Added TE-28, TE-28-A & TE-28-B	D.J.F.
9-27-71	Rev. TE-28-B	D.J.F.
1-10-72	Rev. 33 B-34 -- Added TE-33 & TE-34	D.J.F.
3-2-72	Rev. 34 Rev., 36 Rev. & Added 36-A	D.J.F.
5-10-72	Rev. 34 Rev. 2 B TE-34	D.J.F.
5-16-72	Added ER-38	D.J.F.

DETAIL OF STRATMOOR SUBDIVISION
STA. 125+ TO STA. 140+

FEDERAL ROAD REGION NO.	DIVISION	PROJ. NO.	SHEET NO.	TOTAL SHEETS
8	COLORADO	SU 0170(9) Sec. 3	4	

RIGHT OF WAY		REVISIONS	
S.R. 85 FROM JCT. S.H. 15- E. 8 N.		8-17-71	Added TE-28



$\Delta = 39^{\circ}50'14''$ $B_y = 3^{\circ}07'30''$
 $T_s = 955.8$ $L_s = 250'$
 $\Delta c = 33^{\circ}35'$ $D_c = 2^{\circ}30'$
 $L_c = 1343.3'$ $L_T = 168.69'$
 $R_c = 229.18'$ $S_T = 83.36'$
 $S = 0.0691/ft$
 $M.D.S. = 60 M.P.H.$
 $S.S.D. =$

LEGEND (This sheet only)

- T — T — M.S.T. Buried Cable
- T — T — To be removed or abandoned
- T — T — Existing to remain
- T — T — Proposed relocation

STRATMOOR VALLEY THIRD FILING		
(14) DANNY D.J. BAKER AND WALTERAUD BAKER, J.T.	(20) O. HOWARD CHAFFIN, JR. AND JOYCE A. CHAFFIN, J.T.	(TE-28) CLEAR SPRINGS RANCH, INC.
(15) JOHN J. PRENDERGAST AND ANNA PRENDERGAST, J.T.	(21) JAMES A. BENNETT AND KATHERINA B. BENNETT, J.T.	
(16) ARTHUR E. HENDERSON	(22) ERNESTINE CORE	
(17) JIMMY L. THORNBERRY AND GEORGIA THORNBERRY, J.T.	(23) ANTHONY C. STEPHAN AND PATRICIA I. STEPHAN, J.T.	
(18) SAMUEL S. SAPP AND BARBARA A. SAPP, J.T.	(24) LESLEY W. BAILEY AND GREGORIA BAILEY, J.T.	
(19) CHARLES C. COOK AND SHIRLEY J. COOK, J.T.	(25) THOMAS H. BENTLEY AND MARY R. BENTLEY, J.T.	
	(26) STRATMOOR DEVELOPMENT CO., INC.	

NW 1/4, Sec. 10
T. 15 S., R. 66 W.

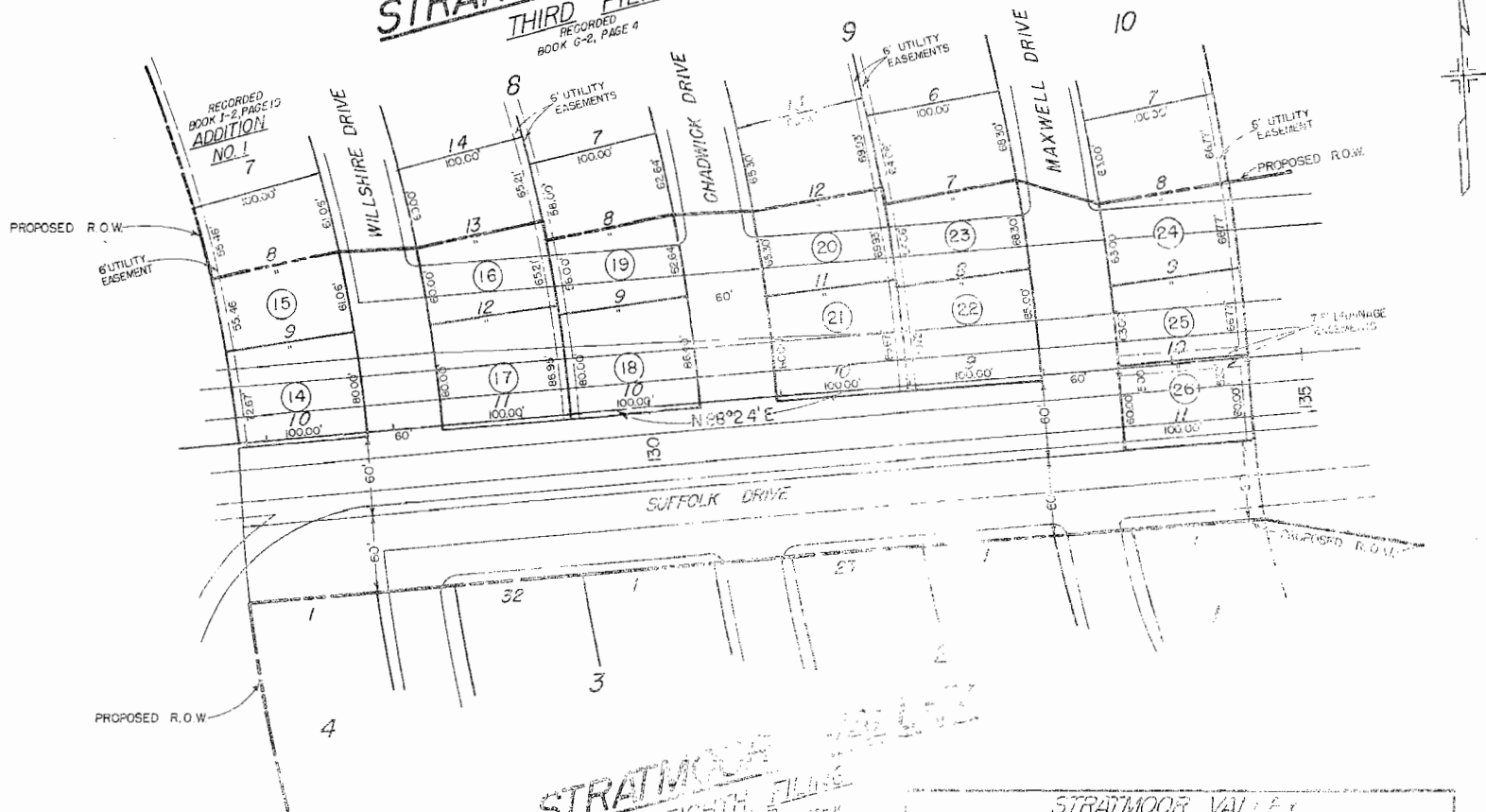
FEDERAL ROAD DISTRICT	PROJ. NO.	SHEET NO.	TOTAL SHEETS
0	COLORADO SU 0170(9) Sec. 3	5	

RIGHT OF WAY
 SH. 65 FROM JCT. S.H. 115-
 E. & N.

REVISIONS	

STRATMOOR VALLEY

THIRD FILING
 REGISTERED
 BOOK 6-2, PAGE 4



STRATMOOR VALLEY

EIGHTH FILING
 REGISTERED
 BOOK 11-2, PAGE 25-27

N.W. 1/4 Sec. 10
 T.15S., R.66W.

STRATMOOR VALLEY THIRD FILING	
(14) GARRY D J BAKER AND WALTER BAKER, JT Lot 10, Addition No. 1	(20) CHARLES H. HARRISON AND JAYCE A. HARRISON, JT Lot 11 in Block 9
(16) JOHN J. PRINLETT AND ANNA PRINLETT, JT Lots 8, Addition No. 1	(21) JAMES A. DEWITT AND PATRICIA B. DEWITT, JT Lot 10 in Block 9
(13) PATRICK E. HENDERSON Lot 12 in Block 8	(22) ERIC STINE COPE Lot 9 in Block 9
(17) JOHN L. THORNBERRY AND GEORGIA THORNBERRY, JT Lot 11 in Block 8	(23) ANTHONY G. STEPHAN AND PATRICIA I. STEPHAN, JT Lot 6 in Block 9
(15) SAMUEL E. GAPP AND BARBARA J. GAPP, JT Lot 11 in Block 8	(24) LESLEY W. BAILEY AND WENDY ANN BAILEY, JT Lot 8 in Block 10
(18) CHARLES G. BUCK AND DANIEL J. BUCK, JT Lot 9 in Block 8	(25) THOMAS B. BENTLEY AND JILL M. BENTLEY, JT Lot 10 in Block 10
(19) ...	(26) ...

FEDERAL ROAD REGION NO.	DISTRICT	PROJ. NO.	SHEET NO.	TOTAL SHEETS
9	COLORADO	SU 070(9) (Sec.3)	6	

REVISIONS				
5-17-71	AMM	TE-28-A/B	TE-28-B	D.L.F.
5-27-71	REV.	TE-28-B	ADD TE-28	D.L.F.

RIGHT OF WAY
 SH. 93 FROM JCT S.H. 115
 - E. & N.

SE 1/4 Sec.3
 T.15S., R. 66W.

PROJECTED LINE
 $\Delta = 39^{\circ}50'$ L.I.
 $T_8 = 955.8'$
 $L_c = 250'$
 $\Delta c = 33^{\circ}35'$
 $D_c = 2^{\circ}30'$
 $R_c = 1343.3'$
 $R_b = 2291.8'$
 $S = 0.0691/H$
 M.D.S. = 60 MPH
 S.S.D. =

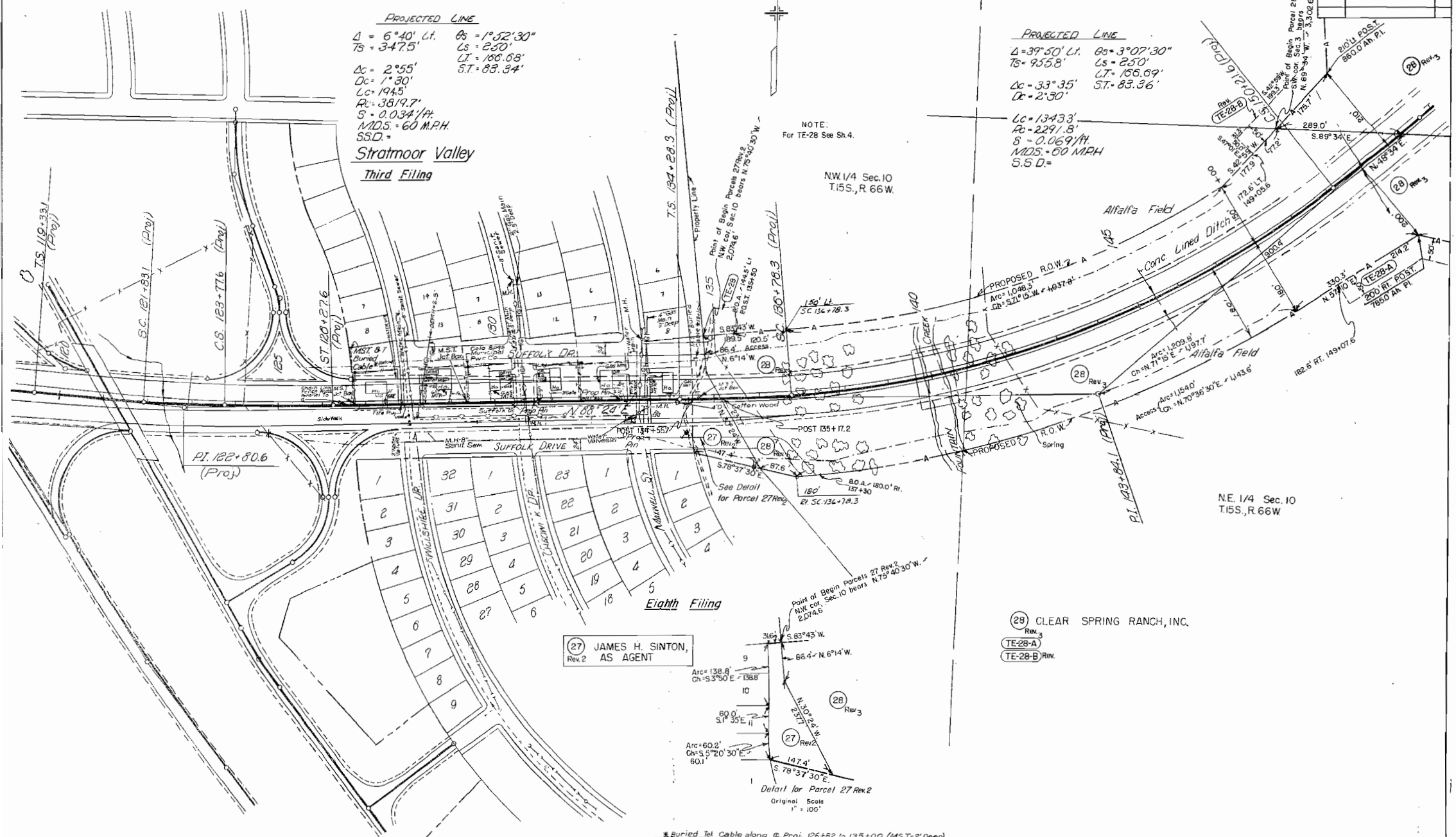
PROJECTED LINE
 $\Delta = 6^{\circ}40'$ L.I.
 $T_8 = 347.5'$
 $\Delta c = 2^{\circ}55'$
 $D_c = 1^{\circ}30'$
 $L_c = 194.5'$
 $R_c = 3819.7'$
 $S = 0.0341/H$
 M.D.S. = 60 MPH
 S.S.D. =

Stratmoor Valley
Third Filing

NOTE:
 For TE-28 See Sh. 4.

NW 1/4 Sec.10
 T.15S., R. 66W.

NE 1/4 Sec.10
 T.15S., R. 66W.



(27) JAMES H. SINTON,
 AS AGENT

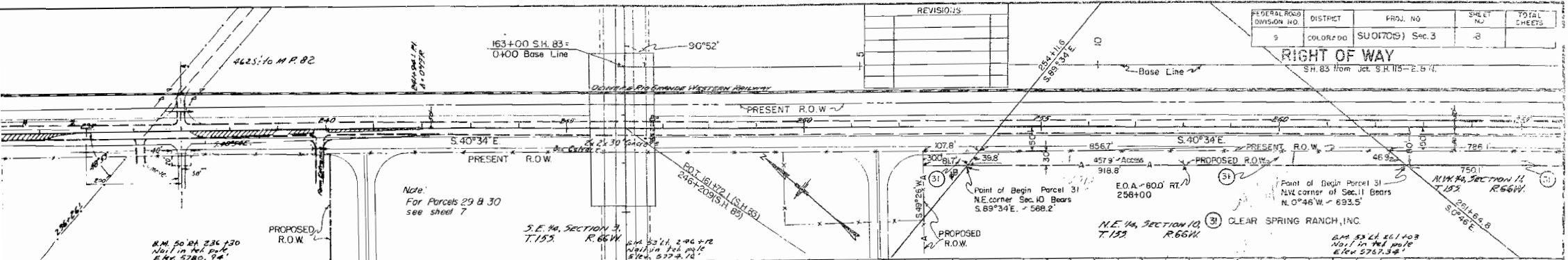
(28) CLEAR SPRING RANCH, INC.
 (TE-28-A)
 (TE-28-B) REV.

*Buried Tel. Cable along G Proj. 126+82 to 135+00 (M.S.T.-2' Deep)

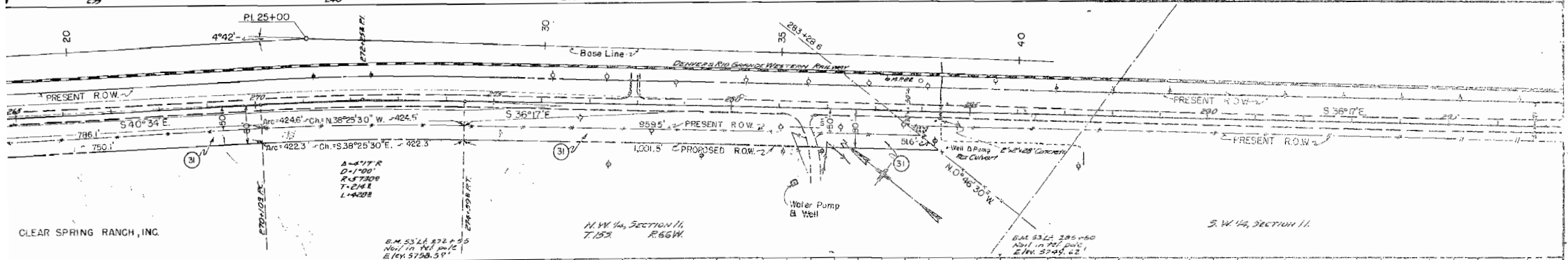
FEDERAL ROAD DIVISION NO.	DISTRICT	PROJ. NO.	SHEET NO.	TOTAL SHEETS
9	COLORADO	SU070(9) Sec. 3	3	

RIGHT OF WAY
S.H. 83 from Jct. S.H. 115 - E.S. 111.

REVISIONS



NO.	TYPE	DESCRIPTION	STATIONING
No. 31	OIL WPT	No. 31 A-1-B (CO) S.H. No. 31 A	245
No. 32	OIL WPT	No. 32 A-1-B (CO) S.H. No. 31 B	245
No. 33	OIL WPT	No. 33 A-1-B (CO) S.H. No. 31 B	245
No. 34	OIL WPT	No. 34 A-1-B (CO) S.H. No. 31 B	245
No. 35	OIL WPT	No. 35 A-1-B (CO) S.H. No. 31 B	245
No. 36	OIL WPT	No. 36 A-1-B (CO) S.H. No. 31 B	245



NO.	TYPE	DESCRIPTION	STATIONING
No. 37	OIL WPT	No. 37 A-1-B (CO) S.H. No. 31 B	270
No. 38	OIL WPT	No. 38 A-1-B (CO) S.H. No. 31 B	270
No. 39	OIL WPT	No. 39 A-1-B (CO) S.H. No. 31 B	270
No. 40	OIL WPT	No. 40 A-1-B (CO) S.H. No. 31 B	270
No. 41	OIL WPT	No. 41 A-1-B (CO) S.H. No. 31 B	270
No. 42	OIL WPT	No. 42 A-1-B (CO) S.H. No. 31 B	270

PLATE 3 - PLAN PROFILE (A) & (B) & (C) & (D) & (E) & (F) & (G) & (H) & (I) & (J) & (K) & (L) & (M) & (N) & (O) & (P) & (Q) & (R) & (S) & (T) & (U) & (V) & (W) & (X) & (Y) & (Z)

PLEASE DO NOT SCALE

FEDERAL ROAD DESIGN NO.	DISTRICT	PROJ. NO.	SHEET NO.	TOTAL SHEETS
9	COLORADO	SU 0170(9) Sec. 3	9	

RIGHT OF WAY
S 1/4 Sec 3 T15S, R. 66W.

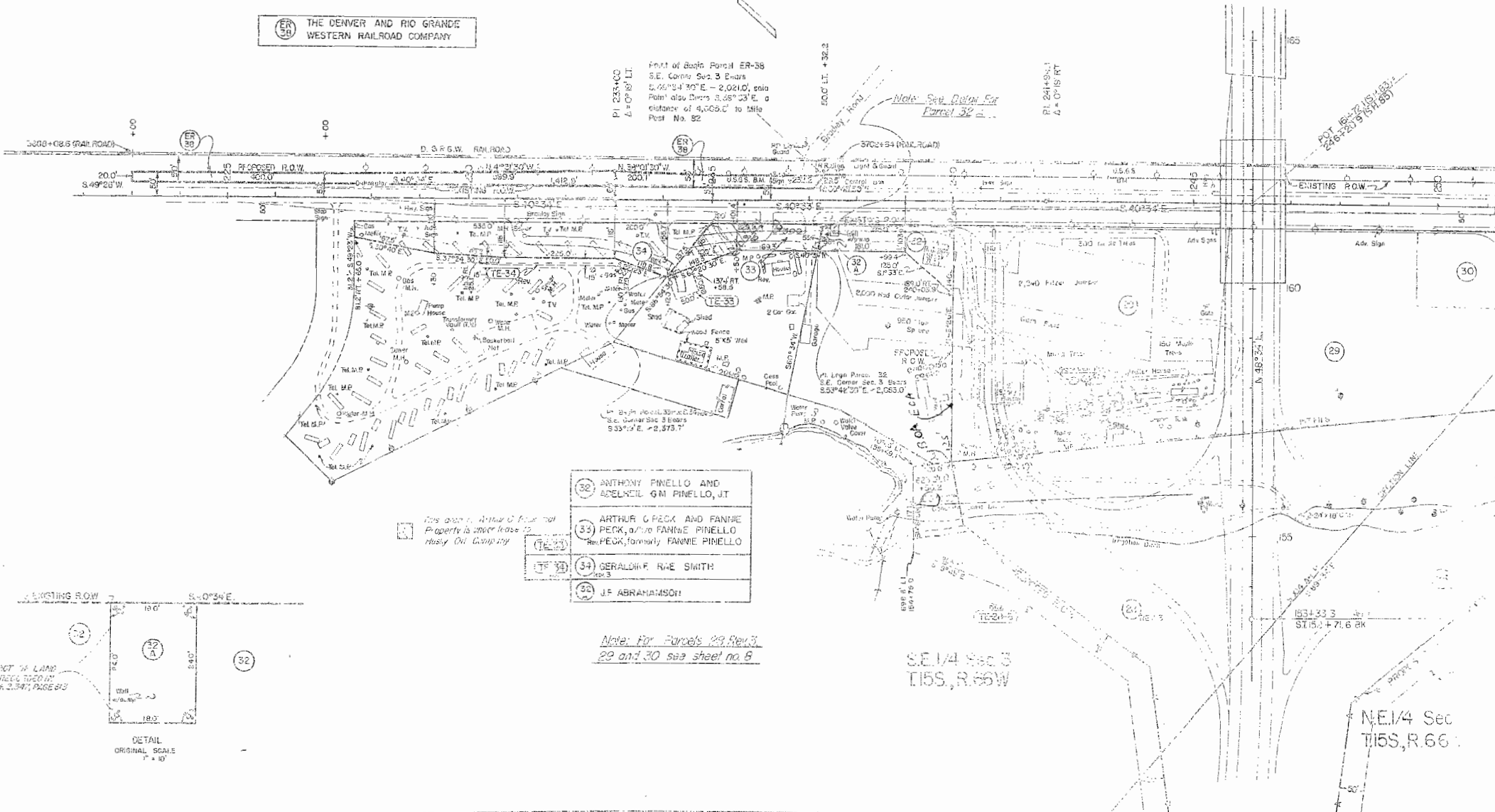
REVISIONS		
8-17-71	Added TE-28-3 & TE-28-4	D.J.F.
8-27-71	Rev TE-28-3 & Access 23160, 510 J.F.	
11-10-72	Rev 33 & 34 - Added TE-33, TE-34 & J.F.	
2-2-72	Rev. 34 Rev.	D.J.F.
5-10-72	Rev 34 Rev 2 & TE-34	D.J.F.
5-16-72	Added ER-38	D.J.F.

ER 38
THE DENVER AND RIO GRANDE
WESTERN RAILROAD COMPANY

PI 233+00
L = 0° 18' RT
Point of Beginning Parcel ER-38
S.E. Corner Sec. 3 Encls
S. 66° 34' 30" E. - 2,021.0', said
Point' also bears S. 65° 23' E. a
distance of 4,065.0' to Mile
Post No. 82

PI 244+94.1
L = 0° 18' RT

500' LT. + 32.2



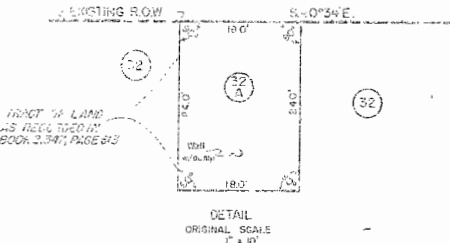
- (32) ANTHONY PINELLO AND
ADELNEIL GM PINELLO, JT
- (33) ARTHUR C PECK AND FANNIE
PECK, and FANNIE PINELLO
PECK, formerly FANNIE PINELLO
- (34) GERALDINE RAE SMITH
- (35) J.F. ABRAHAMSON

This parcel, Arthur C Peck and
Property is under lease to
Rusty Oil Company

*Note: For Parcels 29, Rev 3
29 and 30 see sheet no 8*

S.E. 1/4 Sec 3
T15S, R. 66W

N.E. 1/4 Sec
T15S, R. 66W



FEDERAL ROAD REGION NO.	DISTRICT	PROJ. NO.	SHEET NO.	TOTAL SHEETS
9	COLORADO	SU 0170 (9) Sec 3	10	

SH.83 FROM JCT. S.H. 115 E.B.N.

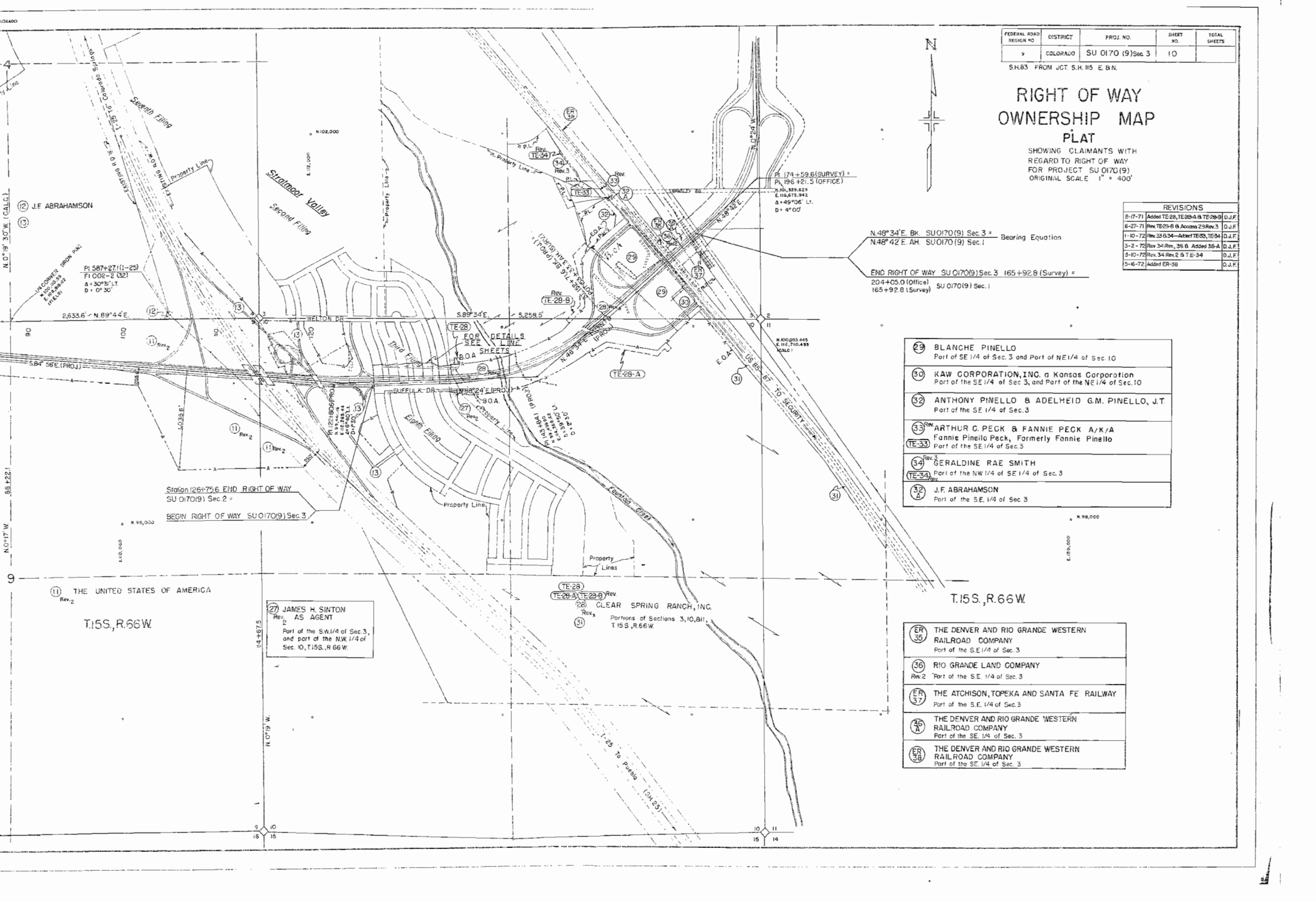
RIGHT OF WAY OWNERSHIP MAP PLAT

SHOWING CLAIMANTS WITH REGARD TO RIGHT OF WAY FOR PROJECT SU 0170 (9), ORIGINAL SCALE 1" = 400'

REVISIONS	
8-17-71	Added TE-28, TE-28-A & TE-28-B D.J.F.
8-27-71	Rev TE-28-B & Access 29 Rev. 3 D.J.F.
1-10-72	Rev 33 & 34 - Added TE-28, TE-34 D.J.F.
3-2-72	Rev 34 Rev. 2, 35 B, Added 36-A D.J.F.
3-10-72	Rev 34 Rev. 2 & TE-34 D.J.F.
5-16-72	Added ER-38 D.J.F.

29	BLANCHE PINELLO Part of SE 1/4 of Sec. 3 and Part of NE 1/4 of Sec. 10
30	KAW CORPORATION, INC. a Kansas Corporation Part of the SE 1/4 of Sec. 3, and Part of the NE 1/4 of Sec. 10
32	ANTHONY PINELLO & ADELHEID G.M. PINELLO, J.T. Part of the SE 1/4 of Sec. 3
33	ARTHUR C. PECK & FANNIE PECK A/K/A Fannie Pinello Peck, Formerly Fannie Pinello Part of the SE 1/4 of Sec. 3
34	GERALDINE RAE SMITH Part of the NW 1/4 of SE 1/4 of Sec. 3
32A	J.F. ABRAHAMSON Part of the SE 1/4 of Sec. 3

ER 35	THE DENVER AND RIO GRANDE WESTERN RAILROAD COMPANY Part of the S.E. 1/4 of Sec. 3
36	RIO GRANDE LAND COMPANY Rev. 2 Part of the S.E. 1/4 of Sec. 3
ER 37	THE ATCHISON, TOPEKA AND SANTA FE RAILWAY Part of the S.E. 1/4 of Sec. 3
36A	THE DENVER AND RIO GRANDE WESTERN RAILROAD COMPANY Part of the SE 1/4 of Sec. 3
ER 38	THE DENVER AND RIO GRANDE WESTERN RAILROAD COMPANY Part of the SE 1/4 of Sec. 3



N.48°34'E. Bk. SU 0170 (9) Sec. 3 =
N.48°42'E. AH. SU 0170 (9) Sec. 1 = Bearing Equation

END RIGHT OF WAY SU 0170 (9) Sec. 3 165+92.8 (Survey) =
204+05.0 (Office) SU 0170 (9) Sec. 1
165+92.8 (Survey) SU 0170 (9) Sec. 1

Station 126+75.6 END RIGHT OF WAY
SU 0170 (9) Sec. 2 =

BEGIN RIGHT OF WAY SU 0170 (9) Sec. 3 =

27 JAMES H. SINTON
AS AGENT
Rev. 2
Part of the S.W. 1/4 of Sec. 3,
and part of the N.W. 1/4 of
Sec. 10, T.15S., R.66W.

28 CLEAR SPRING RANCH, INC.
Rev. 3
Portions of Sections 3, 10, 11,
T.15S., R.66W.

11 THE UNITED STATES OF AMERICA
Rev. 2
T.15S., R.66W.