

FED ROAD DIST NO	STATE	PROJ NO	SHEET NO	TOTAL SHEETS
3	COLO	S 0001 (I)	1	

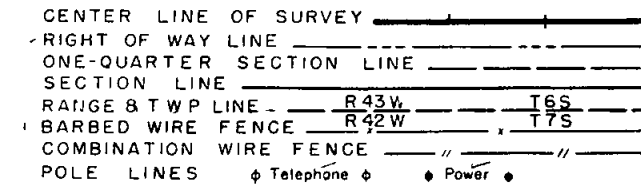
COLORADO STATE HIGHWAY DEPARTMENT

PLAN AND PROFILE OF PROPOSED FEDERAL AID SECONDARY PROJECT NO. S 0001 (I) STATE HIGHWAY NO. 51 (385) KIT CARSON COUNTY

INDEX OF SHEETS

- | | | | |
|----------|------|---|------------------------------------|
| SHEET NO | 1 | SKETCH MAP AND TITLE PAGE | TABULATION OF LENGTH & DESIGN DATA |
| | 2 | TYPICAL SECTION, SUMMARY OF QUANTITIES, SURFACING PLAN,
SELECTED BORROW PLAN AND TABULATION OF BLADING AND SHAPING | |
| | 3 | TABULATIONS OF STRUCTURES, TIMBER GUARD POSTS AND CLEANING
AND STRAIGHTENING ENDS OF CMP CULVERTS | |
| | 4 | STANDARD MARKER POSTS | M-7-B |
| | 5 | STANDARD TIMBER GUARD POSTS | M-19-B |
| | 6 | STANDARD SIDE APPROACH ROADS, FLARING, CUT SLOPE
TREATMENT AND WIDENING AT BRIDGES AND AT CREST
OF GRADES | M-2-DM
M-2-DS |
| | 7 | STANDARD ROADWAY CONSTRUCTION TRAFFIC SIGNS | |
| | 8-23 | ALIGNMENT PLAN AND PROFILE | |
| | 23 | SUMMARY OF EARTHWORK QUANTITIES | |

CONVENTIONAL SIGNS

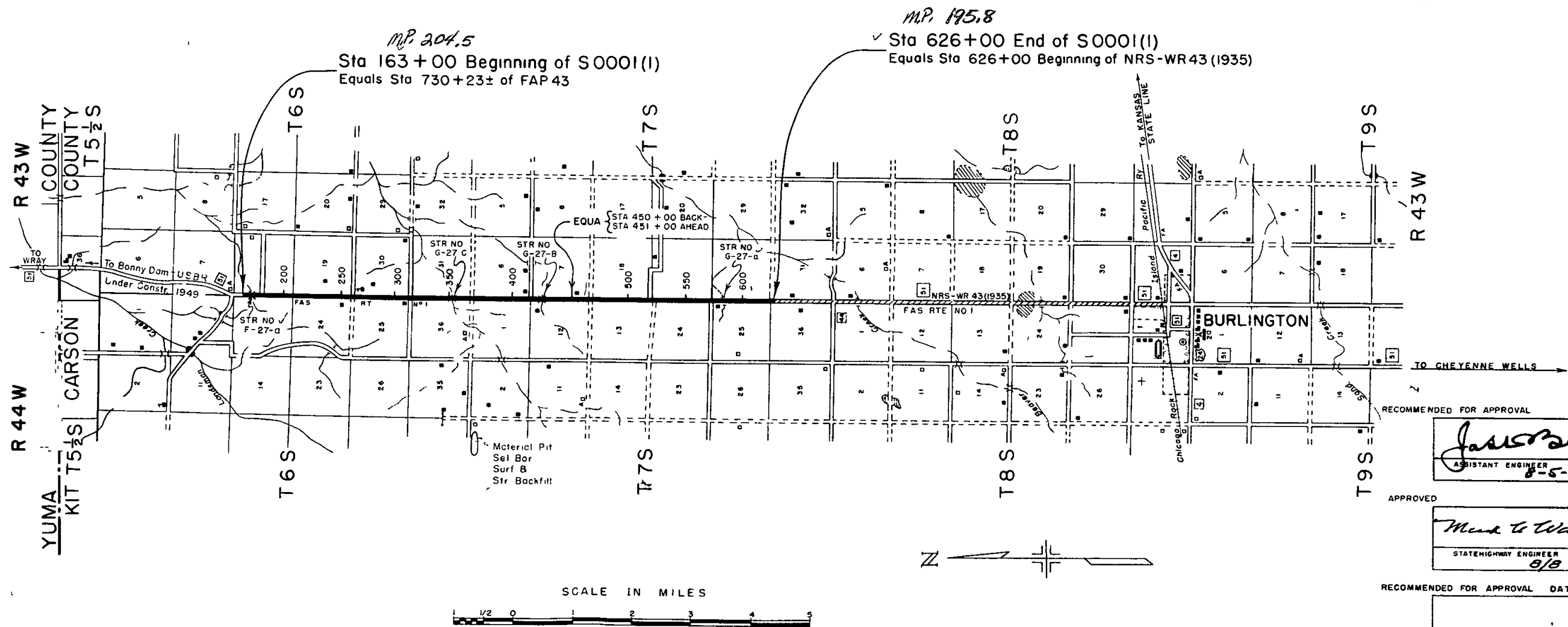


SCALES OF ORIGINAL TRACINGS
 ON PLAN 1 IN = 100 FT
 ON PROFILE 1 1/2 IN = 100 FT HORIZONTAL
 1 1/2 IN = 10 FT VERTICAL
 GRADE LINE ON PROFILE IS SHOWN AS GRADE OF FINISHED ROAD
 GROSS LENGTH OF PROJECT } 46,200 FEET = 8.750 MILES
 NET LENGTH OF PROJECT }

NOTE
 It is recommended that bidders on this Project go over the plan details with one of the following field representatives of this Department
 - Harvey Stiff District Engineer Denver, Colo
 - FW Miller Construction Engineer Denver, Colo

TABULATION OF LENGTH & DESIGN DATA

STATION	ROADWAY		BRIDGES	
	LIN FT	LIN FT	LOADING	
163+00 Beginning of S0001(I) Equals Sta 730+23± of FAP43	18,734.0			
350+340 Bridge End Draw		305	H-15	
350+645 Bridge End	7,485.1			
425+496 Bridge End Draw		307	H-15	
425+803 Bridge End	2,419.7			
450+00 Back = } EQUA 451+00 Ahead }	17,500.0			
626+00 End of S0001(I) Equals Sta 626+00 Beginning of NRS-WR43 (1935)				
TOTALS	46,138.8	612		
SUMMARY				
Total S0001(I) Roadway	LIN FT 46,138.8	MILES 8.738		
Bridges	LIN FT 612	MILES 0.12		
TOTALS	46,200.0	8.750		
DESIGN DATA				
Maximum Degree of Curve		0°		
Maximum Grade		5.85%		
Minimum NPSD - horizontal		> 1300'		
Minimum NPSD - vertical		364'		
Maximum Design Speed		35 MPH		



RECOMMENDED FOR APPROVAL

James [Signature]
 ASSISTANT ENGINEER
 8-5-49

APPROVED

Wendell [Signature]
 STATE HIGHWAY ENGINEER
 8/8/49

RECOMMENDED FOR APPROVAL DATE

DISTRICT ENGINEER
 BUREAU OF PUBLIC ROADS
 GENERAL SERVICES ADMINISTRATION

APPROVED DATE

DIVISION ENGINEER
 BUREAU OF PUBLIC ROADS
 GENERAL SERVICES ADMINISTRATION

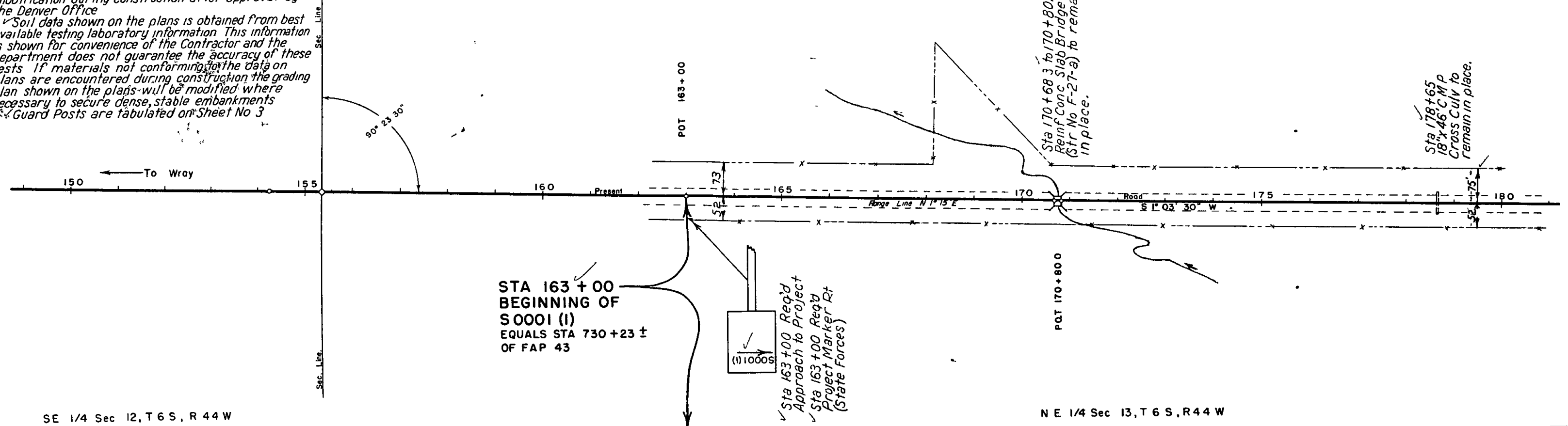
SW 1/4 SEC 7, T 6 S, R 43 W

NW 1/4 Sec 18, T 6 S, R 43 W

FED ROAD DIST NO	STATE	PROJ NO	SHEET NO	TOTAL SHEETS
3	COLO	S 0001 (I)	8	

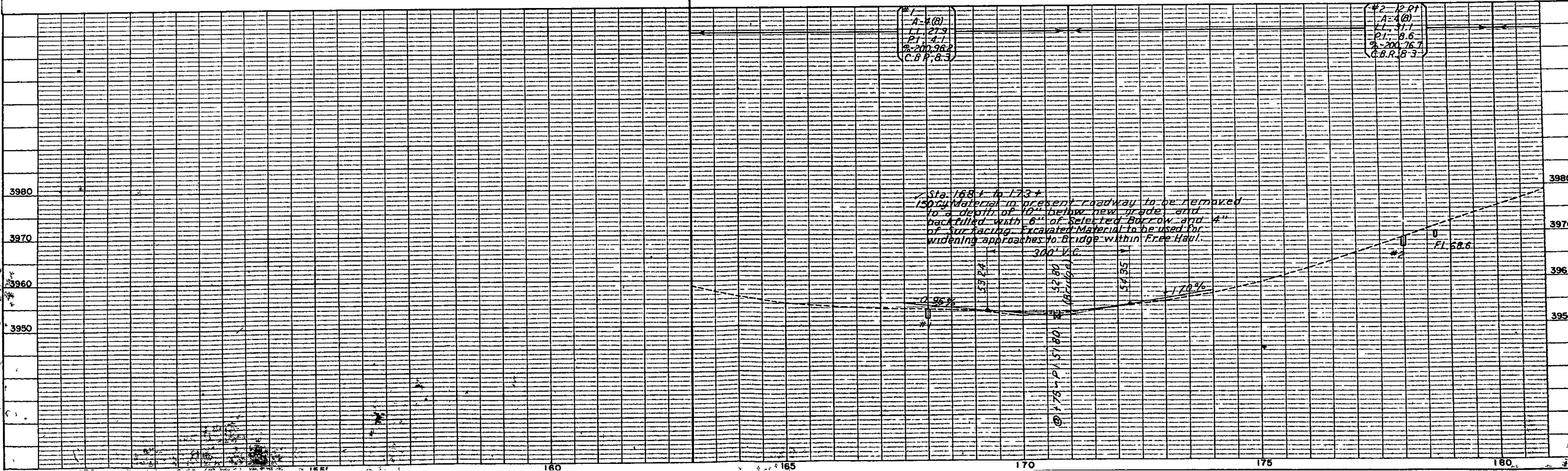
NOTE

- Alignment and Grades as shown are subject to modification during construction after approval by the Denver Office
- Soil data shown on the plans is obtained from best available testing laboratory information. This information is shown for convenience of the Contractor and the Department does not guarantee the accuracy of these tests. If materials not conforming to the data on plans are encountered during construction the grading plan shown on the plans will be modified where necessary to secure dense, stable embankments
- Guard Posts are tabulated on Sheet No 3



SE 1/4 Sec 12, T 6 S, R 44 W

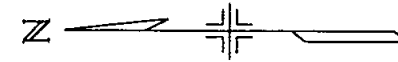
NE 1/4 Sec 13, T 6 S, R 44 W



NW 1/4 Sec 18
T 6 S R 43 W

SW 1/4 Sec 18 T 6 S R 43 W

FED ROAD DIST NO	STATE	PROJ NO	SHEET NO	TOTAL SHEETS
3	COLO	S0001(1)	9	

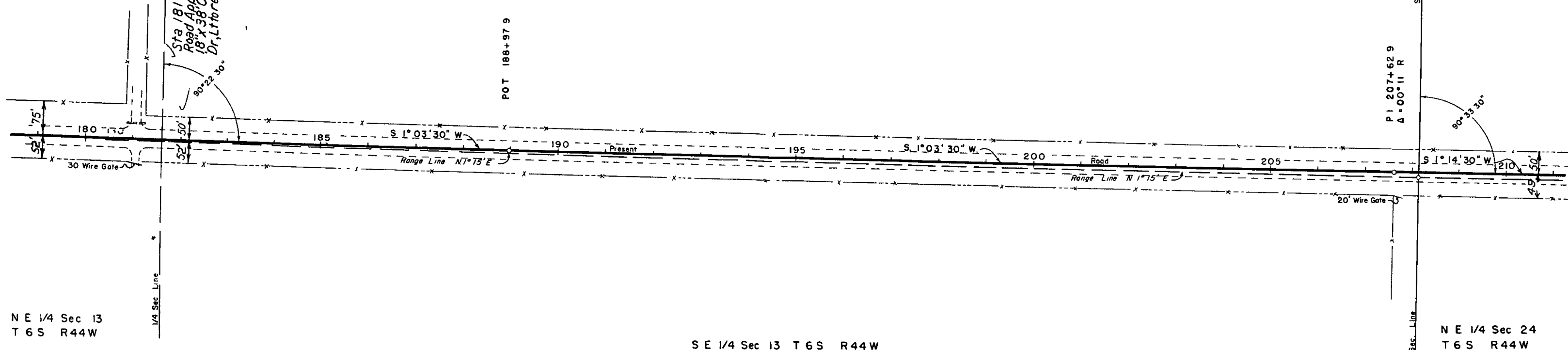


N W 1/4 Sec 19
T 6 S R 43 W

1/4 Sec Line
Sta 181+06 Reg'd
Road Appro. Rt & Lt
18" x 38" C.M.P. Side
Dr. Lt. to remain in place

POT 188+97.9

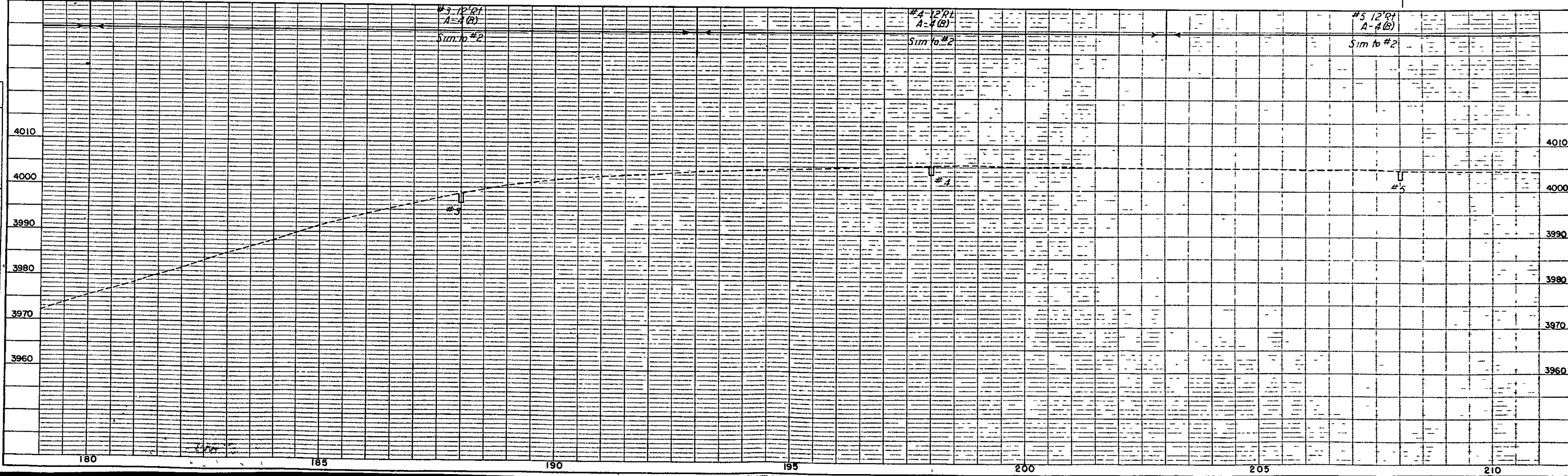
P I 207+62.9
Δ = 00° 11' R



NE 1/4 Sec 13
T 6 S R 44 W

SE 1/4 Sec 13 T 6 S R 44 W

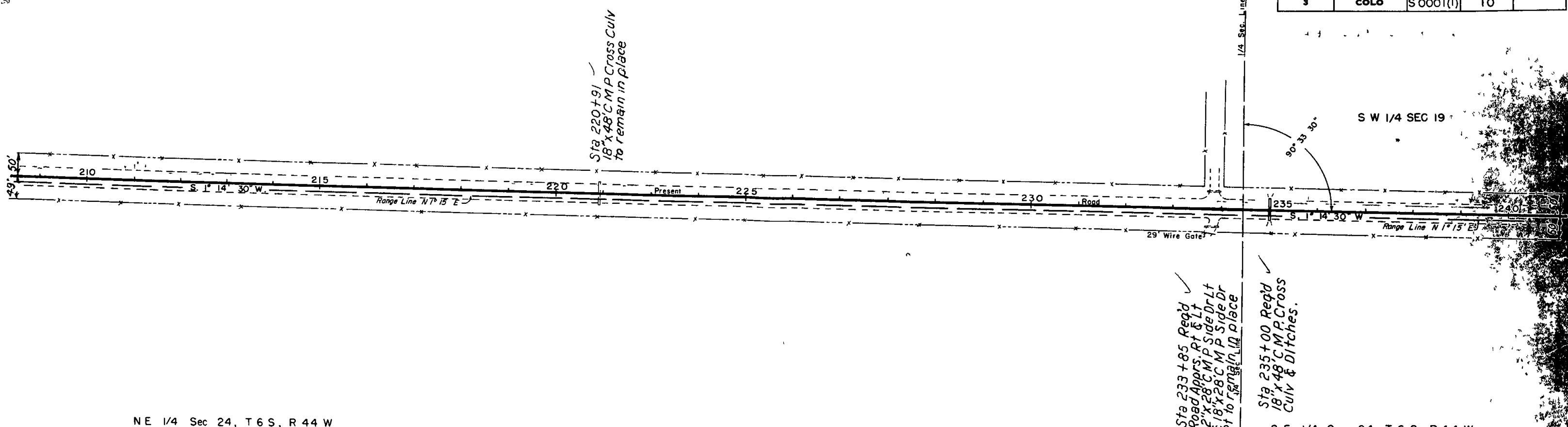
NE 1/4 Sec 24
T 6 S R 44 W



NW 1/4 Sec 19, T 6 S, R 43 W

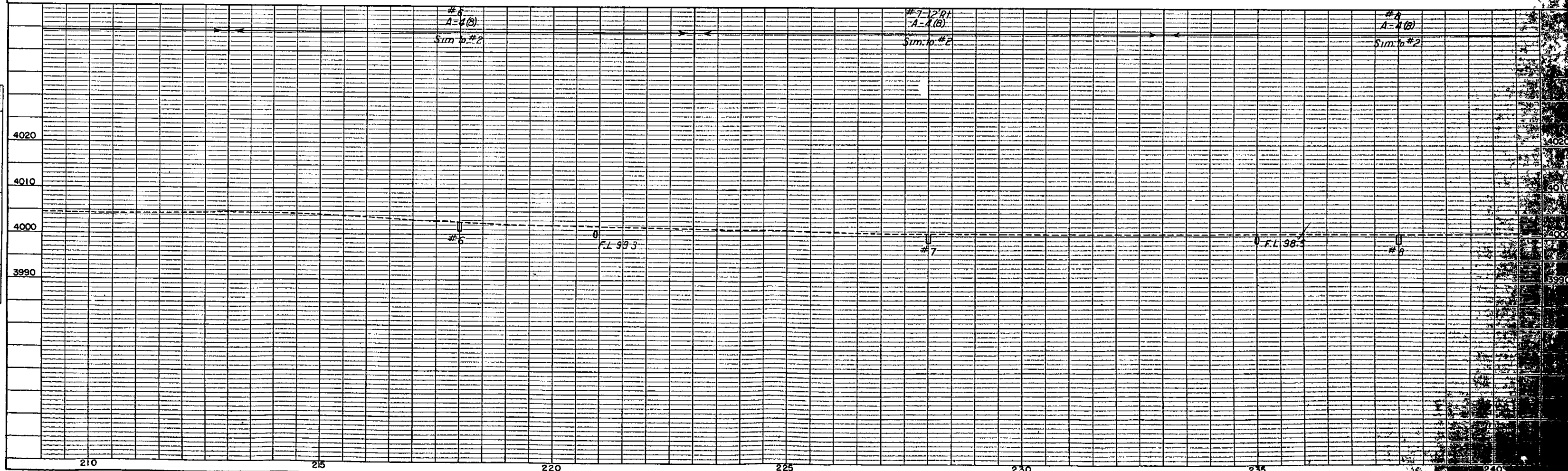


FED ROAD DIST NO	STATE	PROJ NO	SHEET NO	TOTAL SHEETS
3	COLO	S0001(I)	10	



NE 1/4 Sec 24, T 6 S, R 44 W

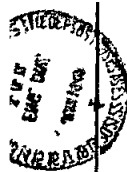
SE 1/4 Sec 24, T 6 S, R 44 W



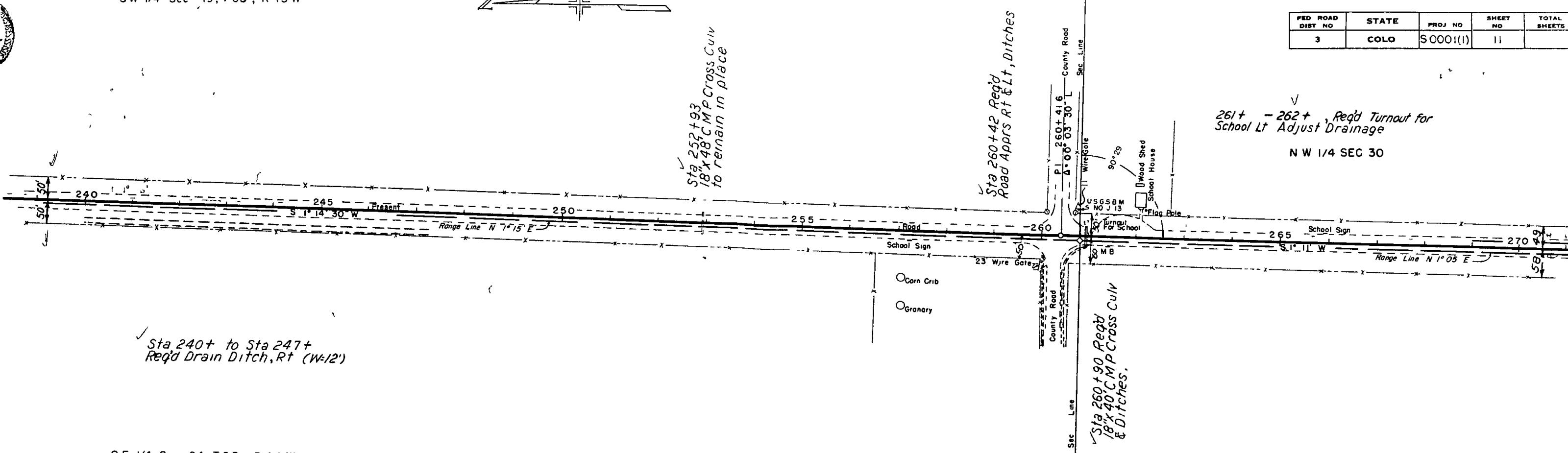
SW 1/4 Sec 19, T6S, R43 W



FED ROAD DIST NO	STATE	PROJ NO	SHEET NO	TOTAL SHEETS
3	COLO	S0001(1)	11	

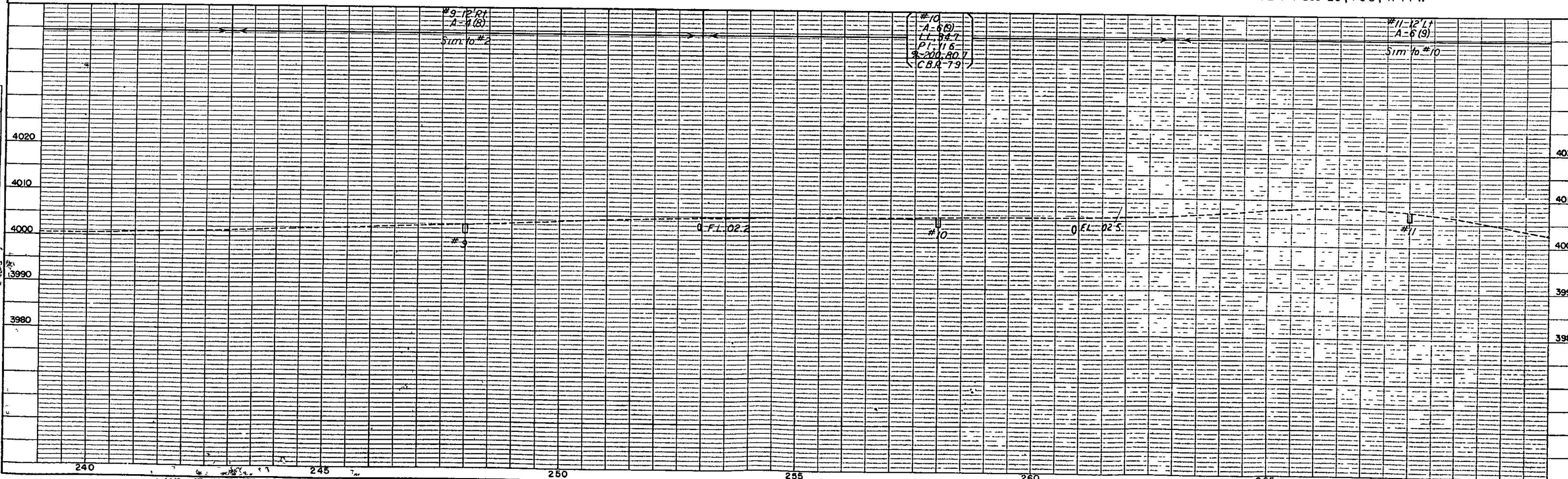


12/19/73
 677/33
 CLIENT: JIM BARON
 DRAWN BY: [illegible]
 CHECKED BY: [illegible]
 DATE: 12/19/73
 PROJECT: [illegible]



SE 1/4 Sec 24, T6S, R44 W

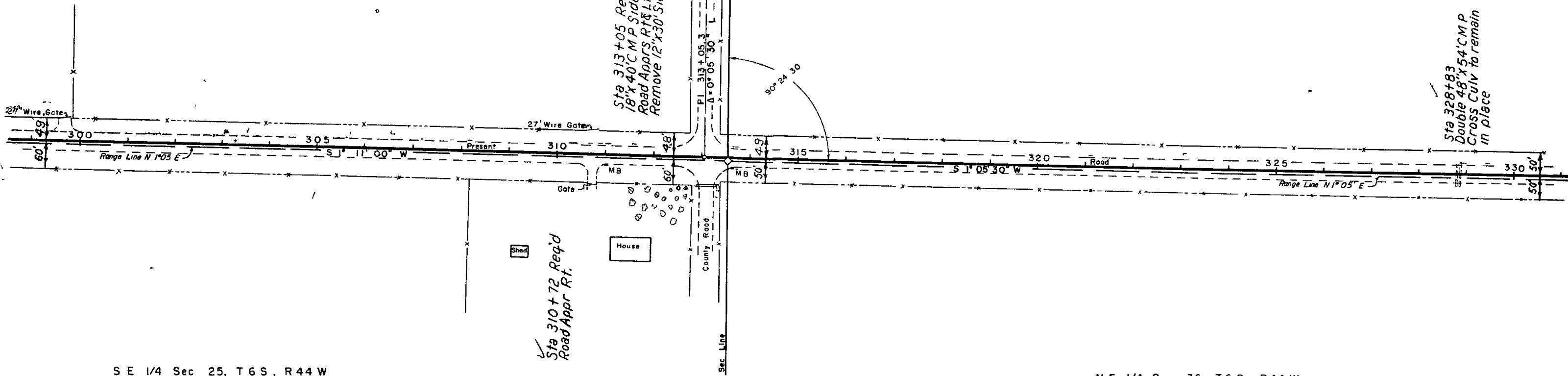
NE 1/4 Sec 25, T6S, R44 W



S W 1/4 Sec 30, T 6 S, R 43 W

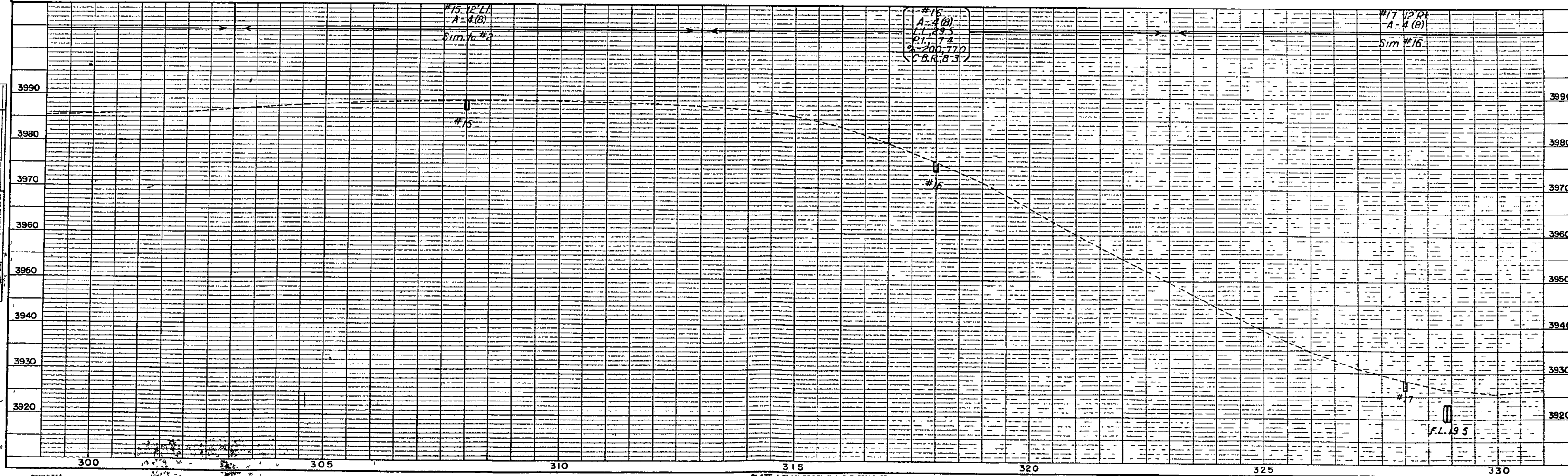
N W 1/4 Sec 31, T 6 S, R 43 W

FED ROAD DIST NO	STATE	PROJ NO	SHEET NO	TOTAL SHEETS
3	COLO	S 0001 (I)	13	



S E 1/4 Sec 25, T 6 S, R 44 W

N E 1/4 Sec 36, T 6 S R 44 W



NW 1/4 Sec 31, T6S, R43W

SW 1/4 Sec 31, T6S, R43W



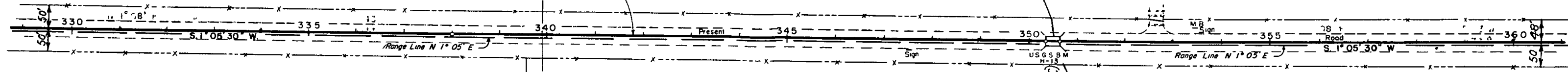
FED ROAD DIST NO	STATE	PROJ NO	SHEET NO	TOTAL SHEETS
3	COLO	S0001(1)	14	

P.O.T. 338+00

1/4 Sec Line

1/4 Sec Line

89° 23' 30"

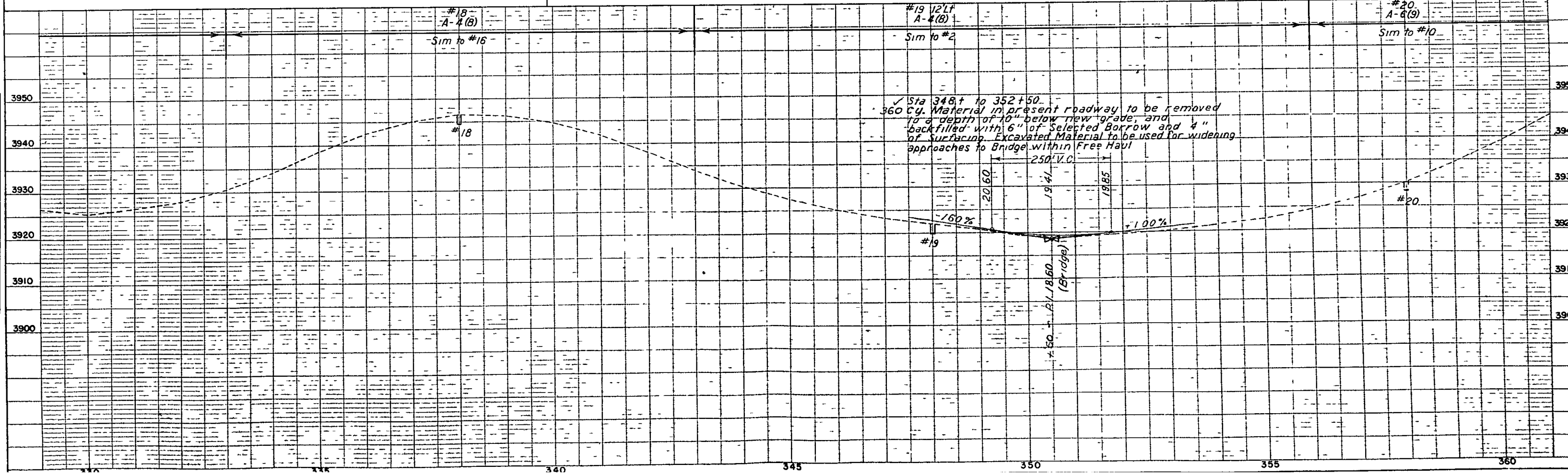


Sta 352+62 Req'd
Road Appr. Lt.
24" x 36" C.M.P. Side Dr.
Lt. to remain in place

Sta 350+340 to Sta 350+64.5
Conc I Beam Bridge (Str No G-27-C)
to remain in place
Req'd 200 CY Undr Excav
for cleaning channel
(Material to be used
for diking)

NE 1/4 Sec 36, T6S, R44W

SE 1/4 Sec 36, T6S, R44W



#18
A-4(B)
Sim to #18

#19
121 ft
A-4(B)
Sim to #2

#20
A-6(9)
Sim to #10

Sta 348+ to 352+50.
360 Cy. Material in present roadway to be removed
to a depth of 10" below new grade, and
backfilled with 6" of Selected Borrow and 4"
of Surfacing. Excavated Material to be used for widening
approaches to Bridge within Free Haul

250' V.C.

20.60

19.41

19.85

#19

(Bridge)

18.60

18.60

18.60

18.60

18.60

18.60

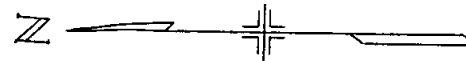
18.60

18.60

SW 1/4 Sec 31, T 6 S, R 4 W

NW 1/4 Sec 6, T 7 S, R 43 W

FED ROAD DIST NO	STATE	PROJ NO	SHEET NO	TOTAL SHEETS
3	COLO	S0001 (1)	15	



Sta 365+70 Reg'd
Road Apprs. Rt & Lt
18' x 28' C.M.P. Sd Dr Lt to
Remain in place

PI 365+72.4
Δ 00° 51' L
Township Line T 6 S
T 7 S

POT 371+33.6

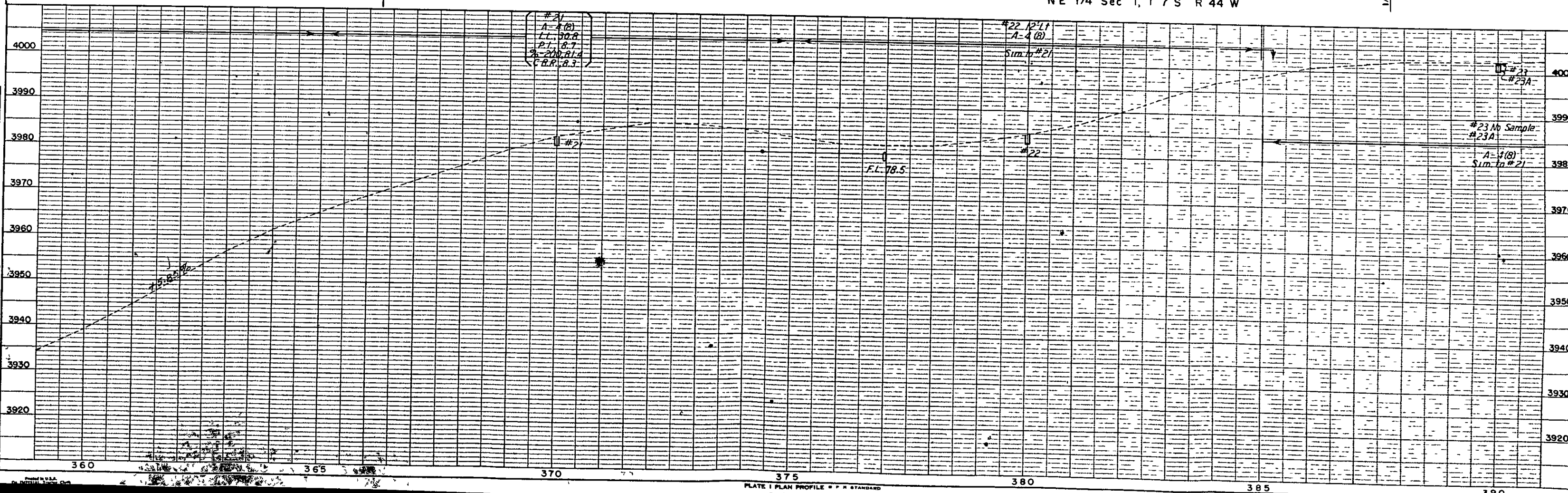
Sta 376+97
24' x 48' C.M.P. Cross Culv
to remain in place

Sta 390+97
18' x 52' C.M.P. Cross
Culv to remain in
place

MATERIAL PIT
N 1/2 Sec 3
T 7 S, R 44 W
2.7 mi from Sta
365+72
Soil Class A-1-b(0)

SE 1/4 Sec 36, T 6 S, R 44 W

NE 1/4 Sec 1, T 7 S R 44 W



SW 1/4 Sec 6, T 7 S, R 43 W



FED ROAD DIST NO	STATE	PROJ NO	SHEET NO	TOTAL SHEETS
3	COLO	S0001(1)	16	

NW 1/4 Sec 7, T 7 S, R 43 W

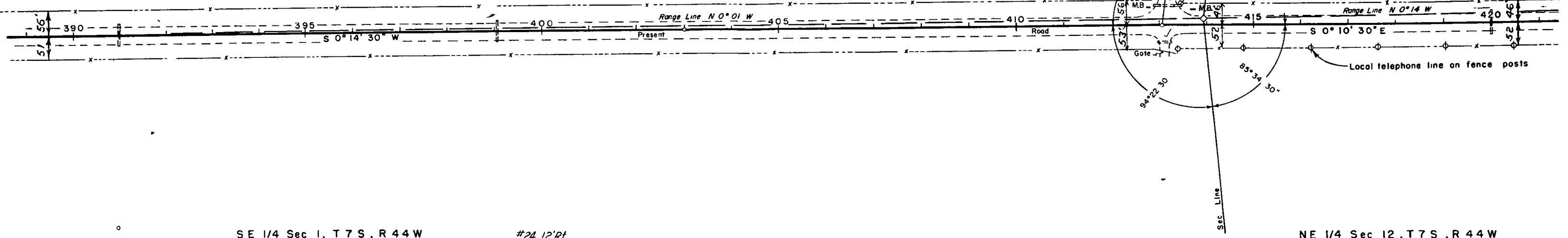
Sta. 390+97
18"x52" C.M.P. Cross Culv
to remain in place

Sta. 399+06
18"x48" C.M.P. Cross Culv
to remain in place

POT 407+99.5

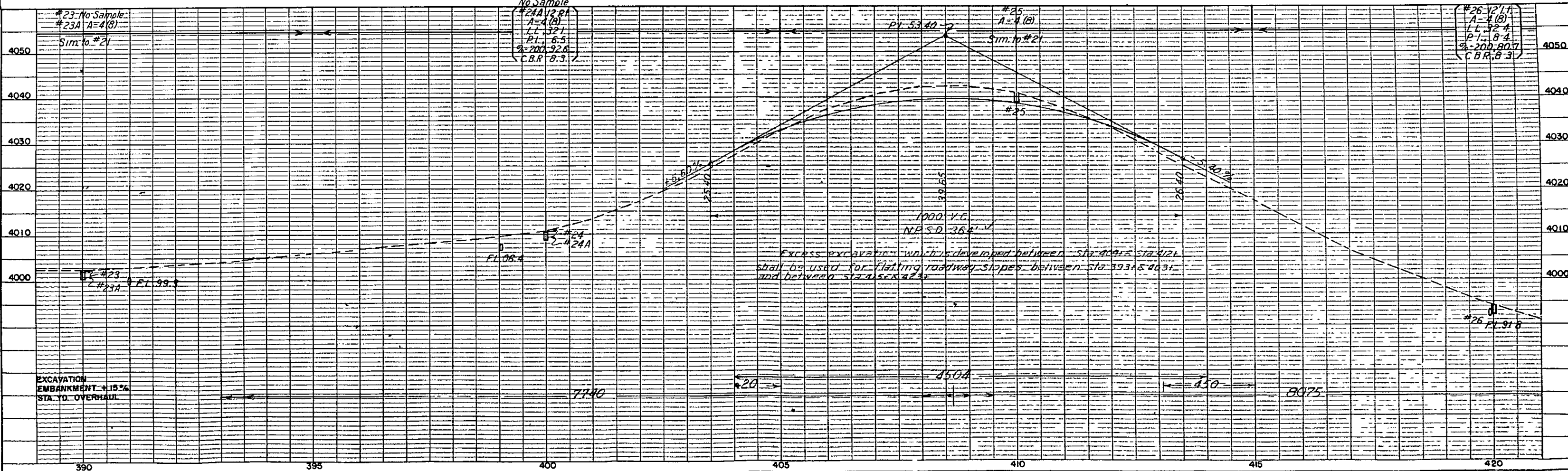
Sta 413+08 Reqd
Road Apprs Rt & Lt, extend
15"x24" C.M.P. Sd Dr Lt, 14"
each end
97'-15" x 32" C.M.P. Sd Dr Rt to
remain in place

Sta 419+98
18"x48" C.M.P. Cross
Culv to remain in
place.



SE 1/4 Sec 1, T 7 S, R 44 W

NE 1/4 Sec 12, T 7 S, R 44 W



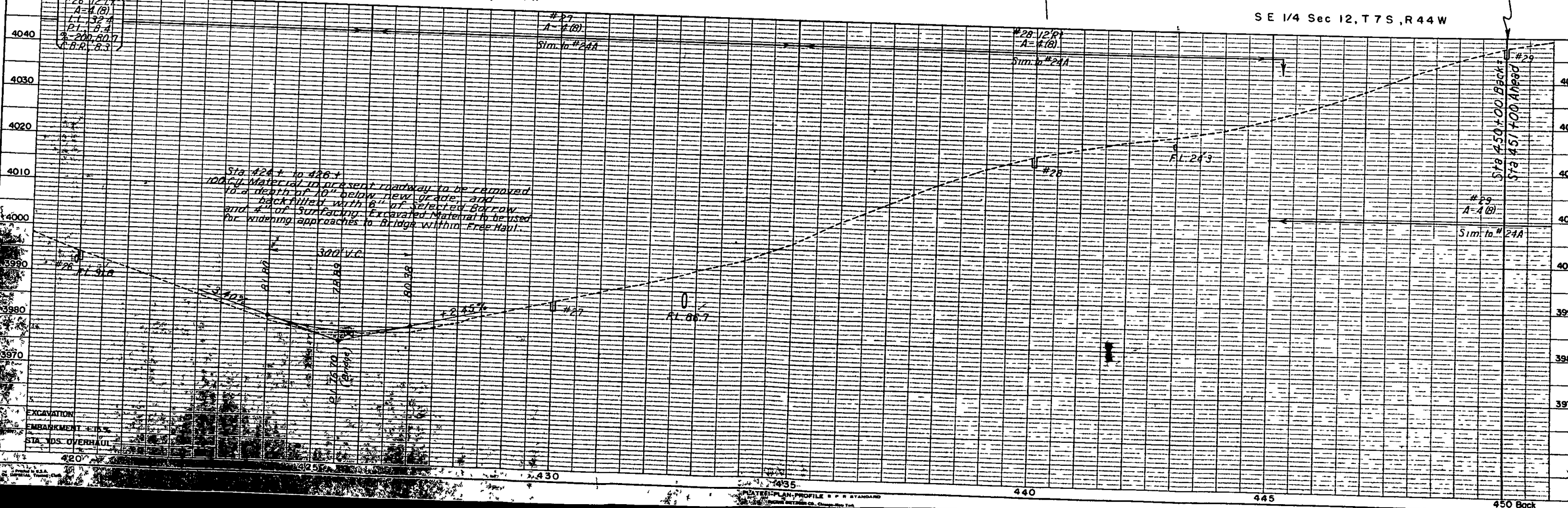
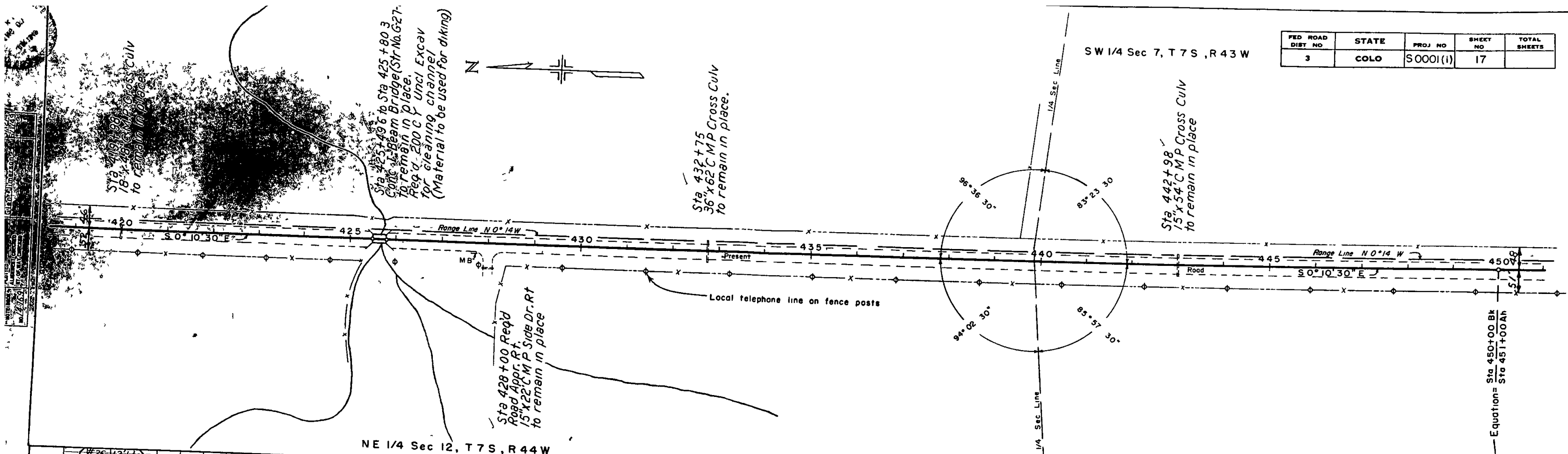
FED ROAD DIST NO	STATE	PROJ NO	SHEET NO	TOTAL SHEETS
3	COLO	S0001(I)	17	

SW 1/4 Sec 7, T 7 S, R 43 W



NE 1/4 Sec 12, T 7 S, R 44 W

SE 1/4 Sec 12, T 7 S, R 44 W



Sta 424+00 to 426+00
 100% Material in present roadway to be removed to a depth of 10" below new grade, and back filled with 6" of selected Borrow and 4" of Surfacing. Excavated Material to be used for widening approaches to Bridge within Free Haul.

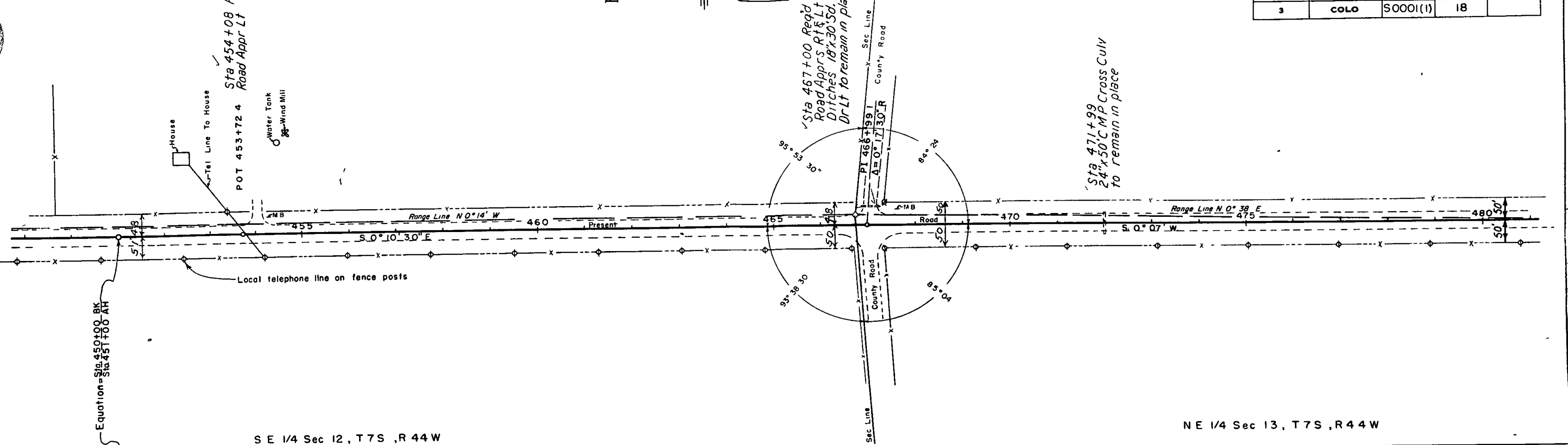
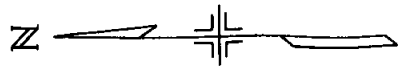
Equation = Sta 450+00 Back - Sta 451+00 Ah

EXCAVATION
 EMBANKMENT ± 15%
 STA. NOS. OVERHAUL

SW 1/4 Sec 7, T 7 S, R 43 W

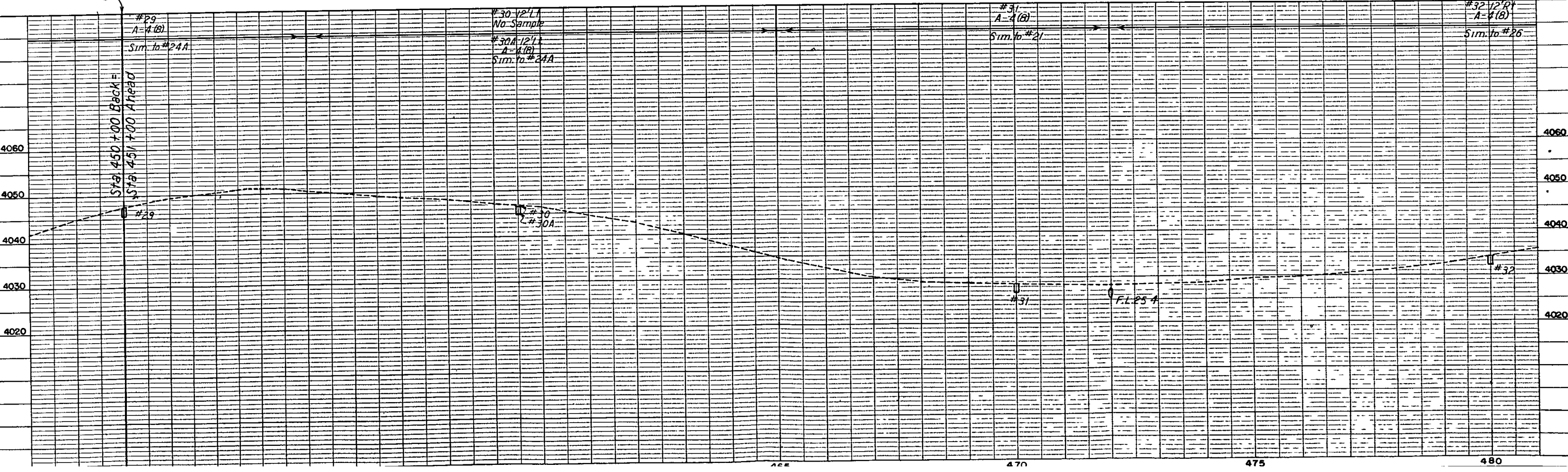
NW 1/4 Sec 18, T 7 S, R 43 W

FED ROAD DIST NO	STATE	PROJ NO	SHEET NO	TOTAL SHEETS
3	COLO	S0001(1)	18	



SE 1/4 Sec 12, T 7 S, R 44 W

NE 1/4 Sec 13, T 7 S, R 44 W



Equation = Sta 450+00 BK Sta 451+00 AH

Sta 450+00 Back = Sta 451+00 Ahead

#29
A-4(B)
Sim. to #24A

#30 1/2 L
No Sample
#30A 1/2 L
A-4(B)
Sim. to #24A

#31
A-4(B)
Sim. to #21

#32 1/2 R
A-4(B)
Sim. to #26

4060
4050
4040
4030
4020

4060
4050
4040
4030
4020

455

470

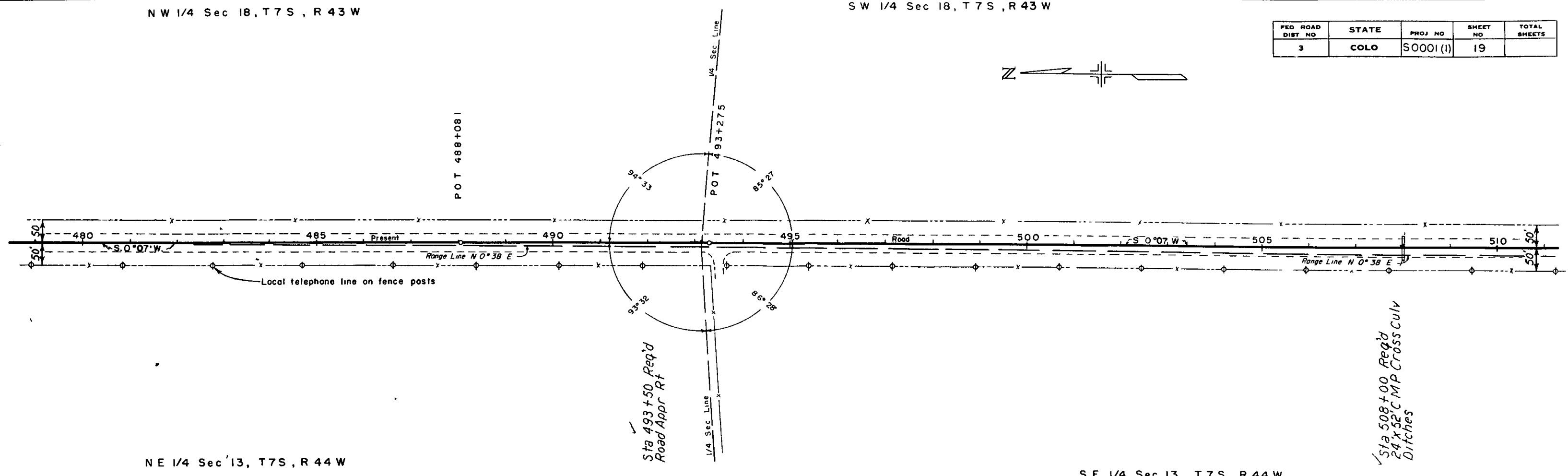
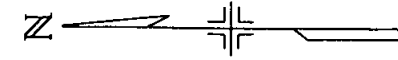
475

480

NW 1/4 Sec 18, T7S, R43W

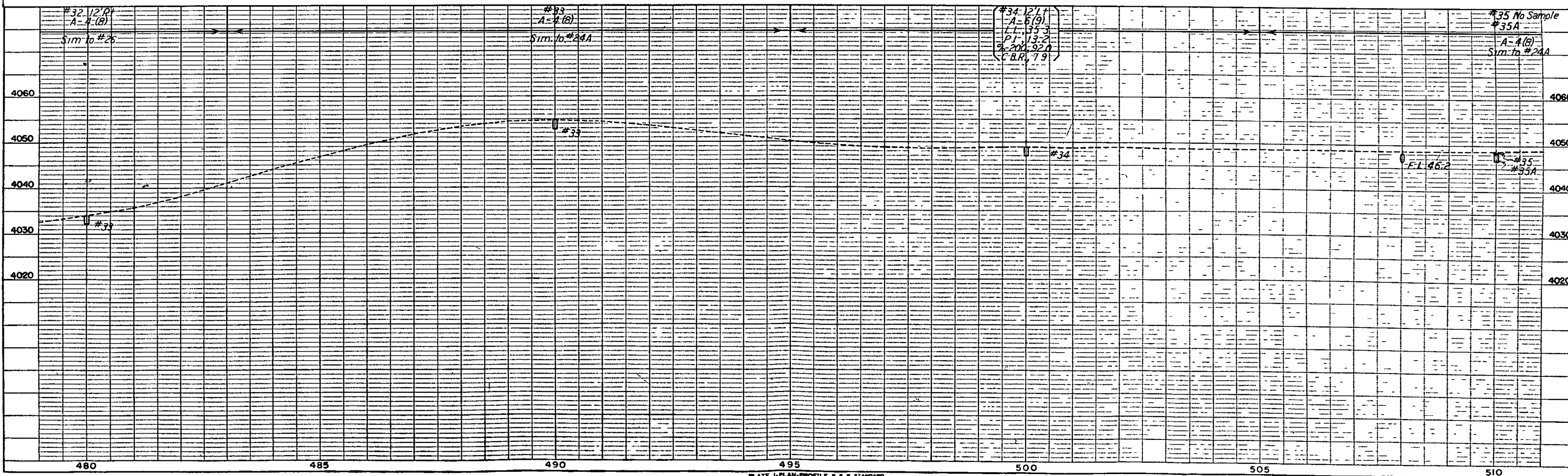
SW 1/4 Sec 18, T7S, R43W

FED ROAD DIST NO	STATE	PROJ NO	SHEET NO	TOTAL SHEETS
3	COLO	S0001 (I)	19	



NE 1/4 Sec 13, T7S, R44W

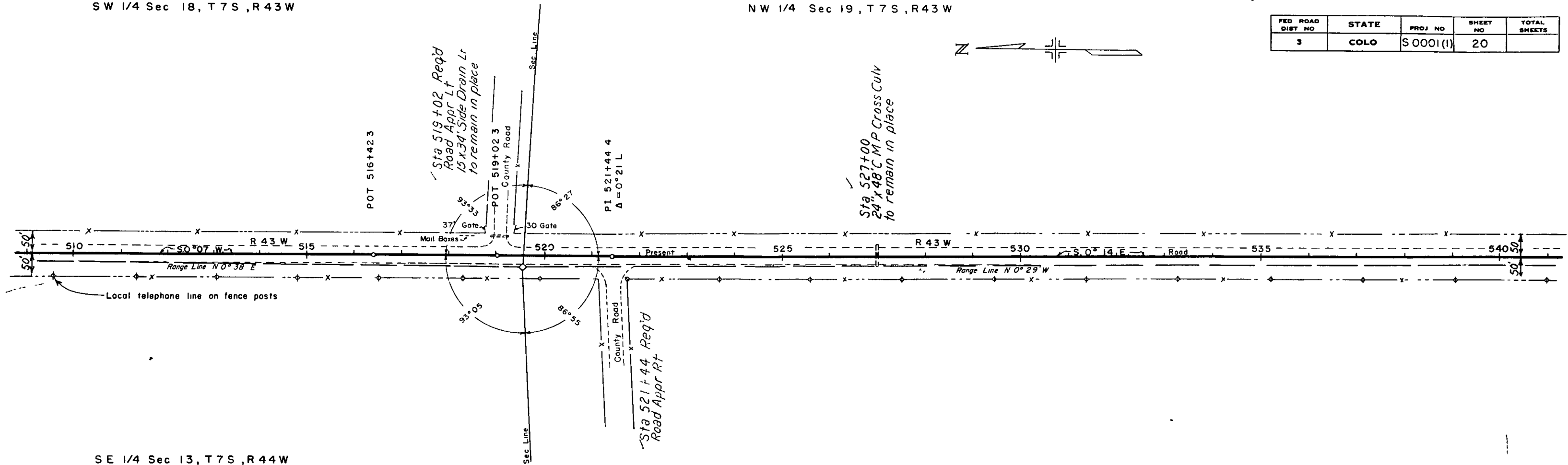
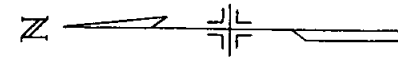
SE 1/4 Sec 13, T7S, R44W



SW 1/4 Sec 18, T7S, R43W

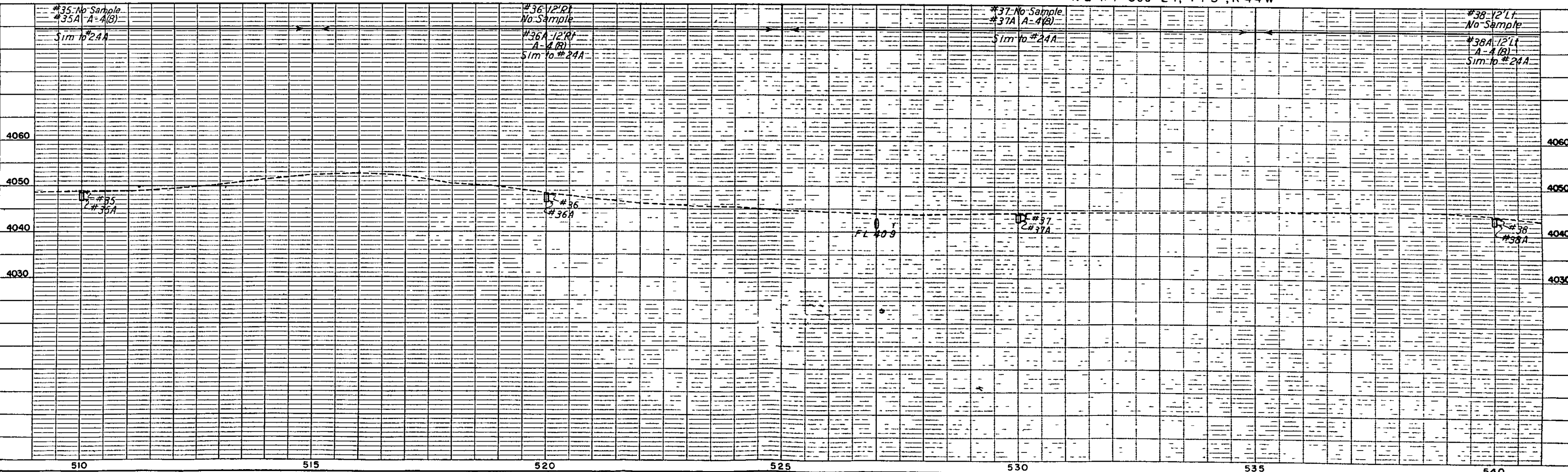
NW 1/4 Sec 19, T7S, R43W

FED ROAD DIST NO	STATE	PROJ NO	SHEET NO	TOTAL SHEETS
3	COLO	S 0001(1)	20	



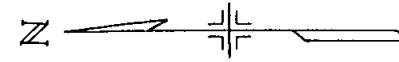
SE 1/4 Sec 13, T7S, R44W

NE 1/4 Sec 24, T7S, R44W

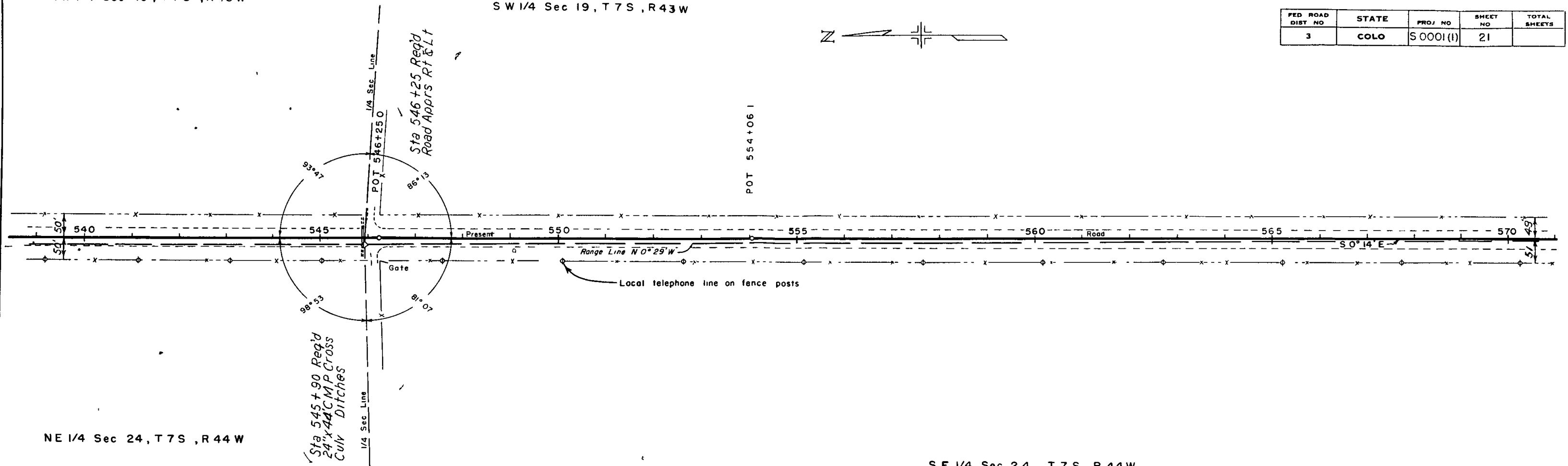


NW 1/4 Sec 19, T7S, R43W

SW 1/4 Sec 19, T7S, R43W

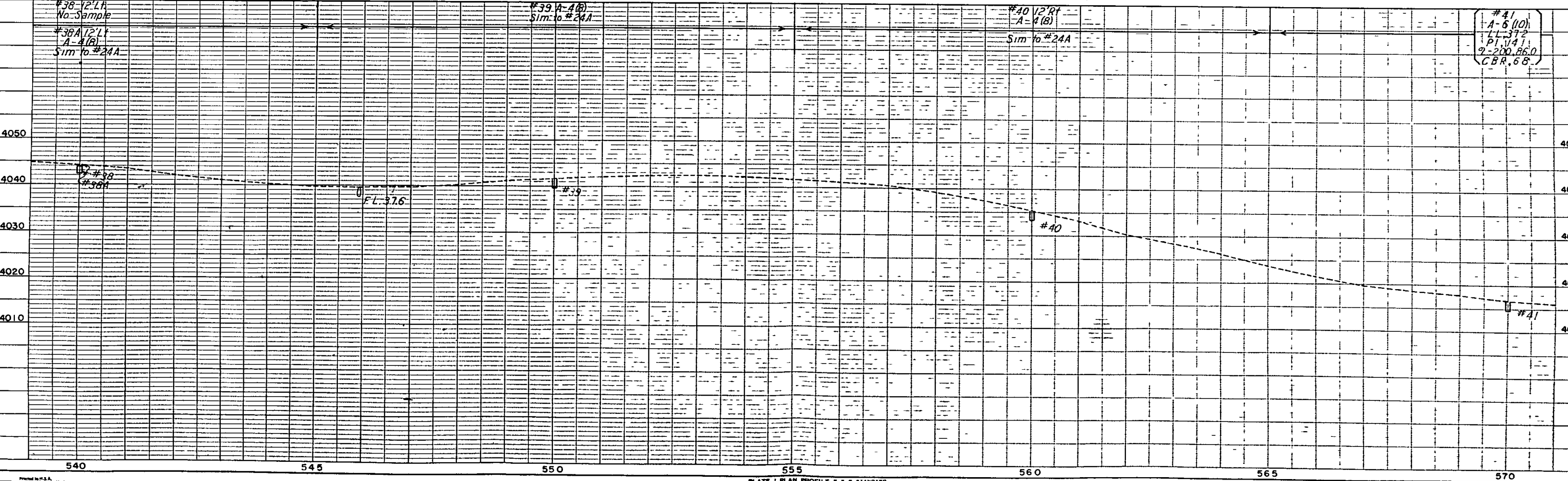


FED ROAD DIST NO	STATE	PROJ NO	SHEET NO	TOTAL SHEETS
3	COLO	S 0001 (I)	21	



NE 1/4 Sec 24, T7S, R44W

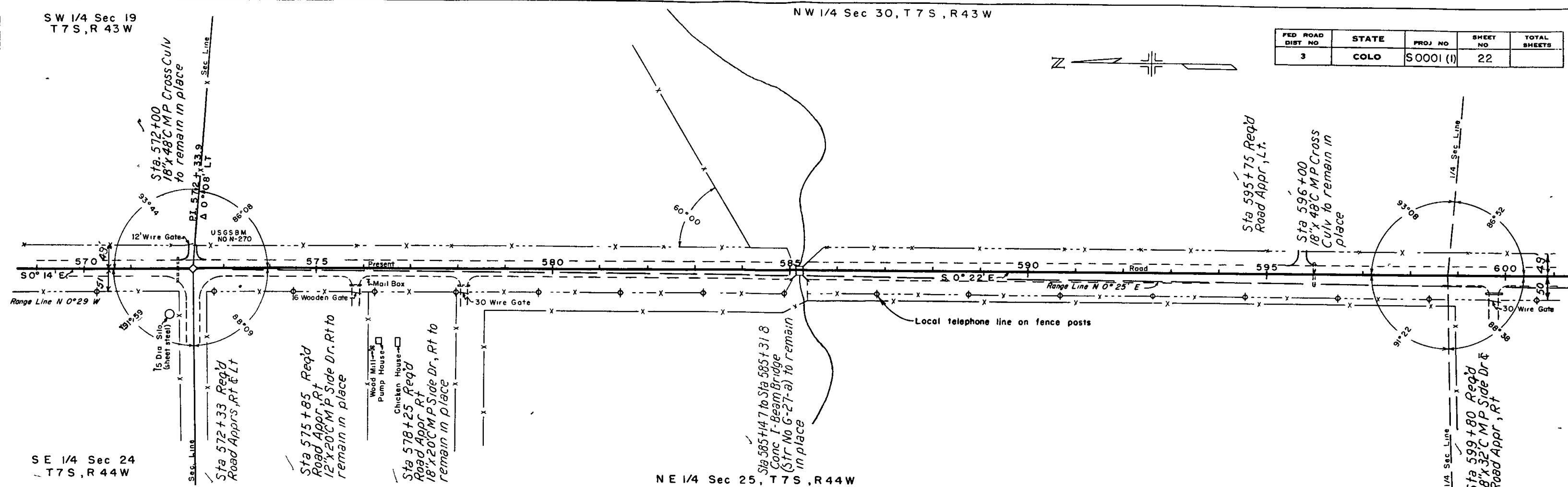
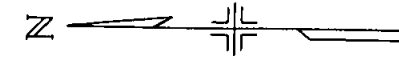
SE 1/4 Sec 24, T7S, R44W



SW 1/4 Sec 19
T7S, R43W

NW 1/4 Sec 30, T7S, R43W

FED ROAD DIST NO	STATE	PROJ NO	SHEET NO	TOTAL SHEETS
3	COLO	S0001 (I)	22	



SE 1/4 Sec 24
T7S, R44W

NE 1/4 Sec 25, T7S, R44W

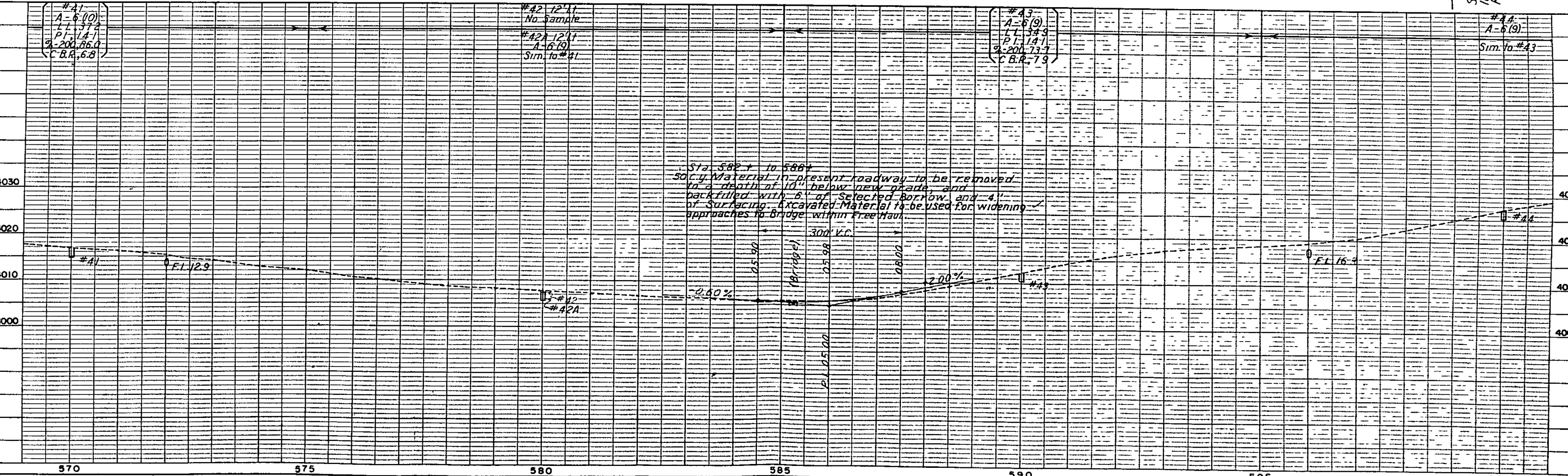


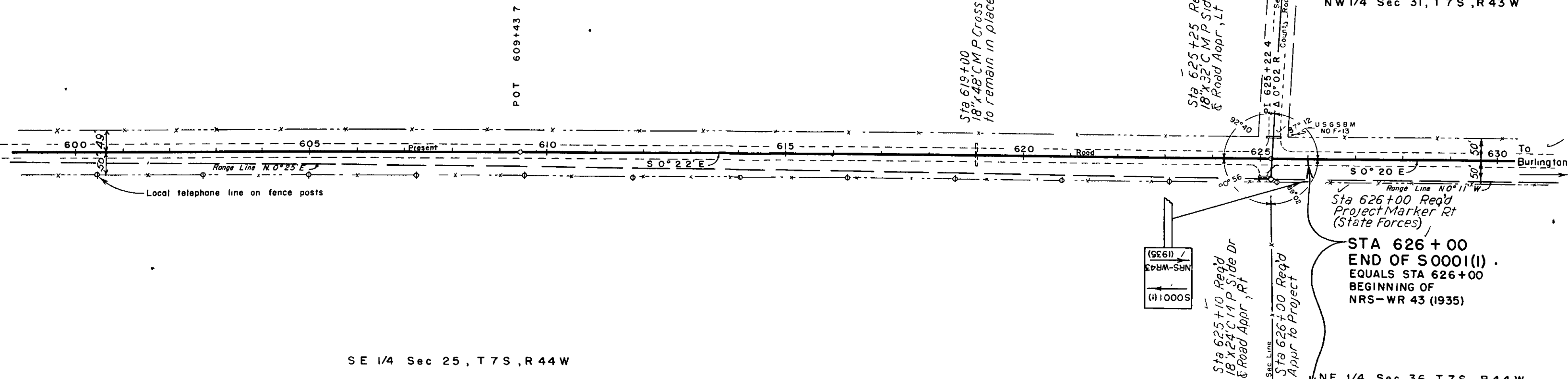
PLATE I-PLAN PROFILE • • • STANDARD
COURTESY BRITISH CO. ENGINEERS, INC.

SW 1/4 Sec 30, T 7 S, R 43 W



FED ROAD DIST NO	STATE	PROJ NO	SHEET NO	TOTAL SHEET
3	COLO	S0001 (I)	23	

NW 1/4 Sec 31, T 7 S, R 43 W



SE 1/4 Sec 25, T 7 S, R 44 W

NE 1/4 Sec 36, T 7 S, R 44 W

