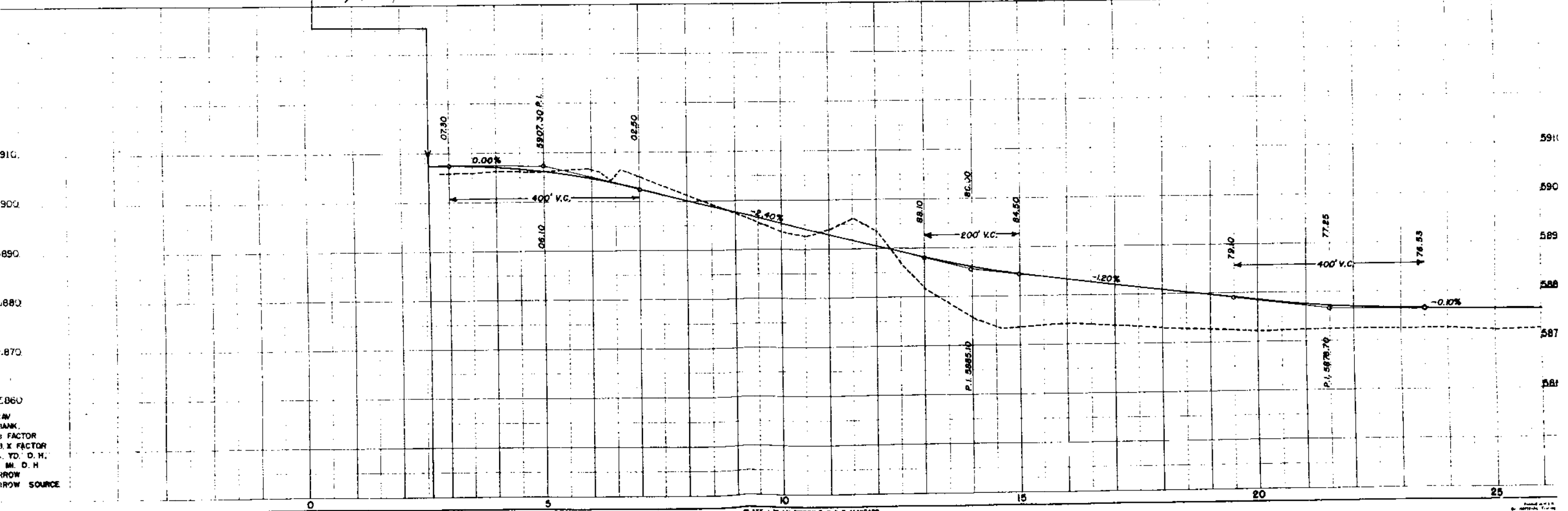


FED. ROAD DIST. NO.	STATE	PROJ. NO.	SHEET NO.	TOTAL SHEETS
3	COLO.	S 0002(II)	3	

RIGHT OF WAY

STA. 2+56.2 BEGIN S0002(II)
10' Opposite Sta. 24+18.3 on F.A.P. 267-H-3



1/4 IN.
1 INK
3 X FACTOR
3 X FACTOR
D. H.
M. D. H.
FROM SOURCE

FED. ROAD DIST. NO.	STATE	PROJ. NO.
3	COLO.	8000208

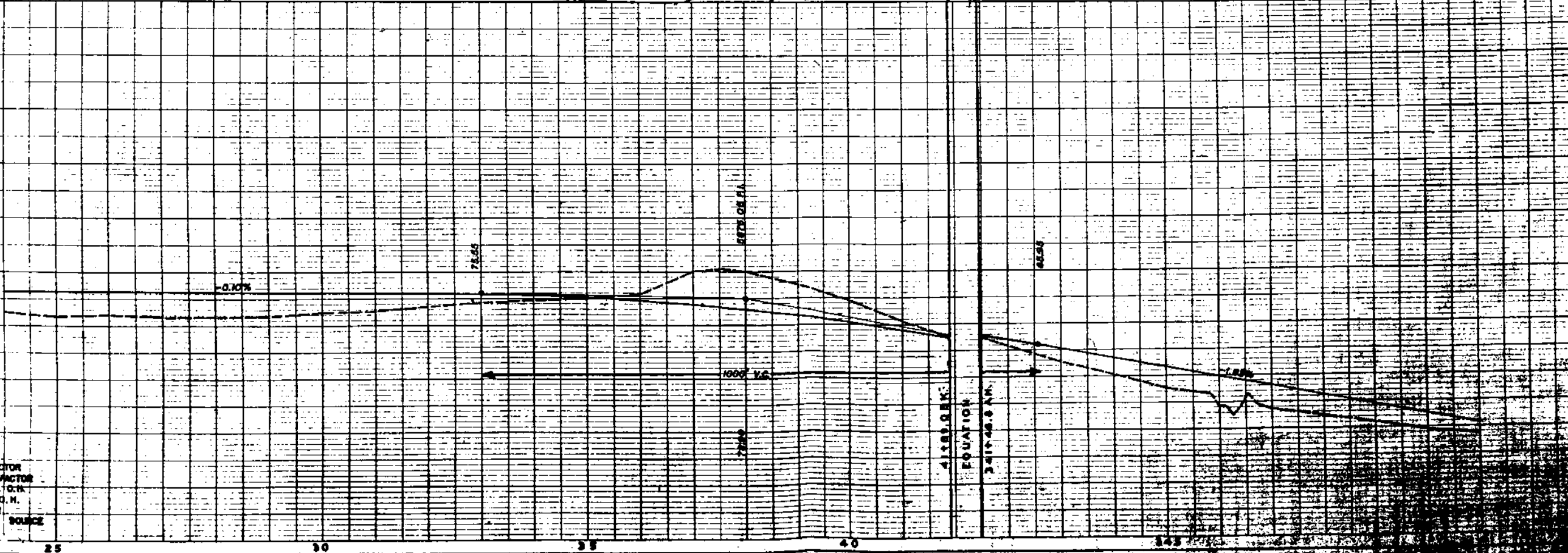
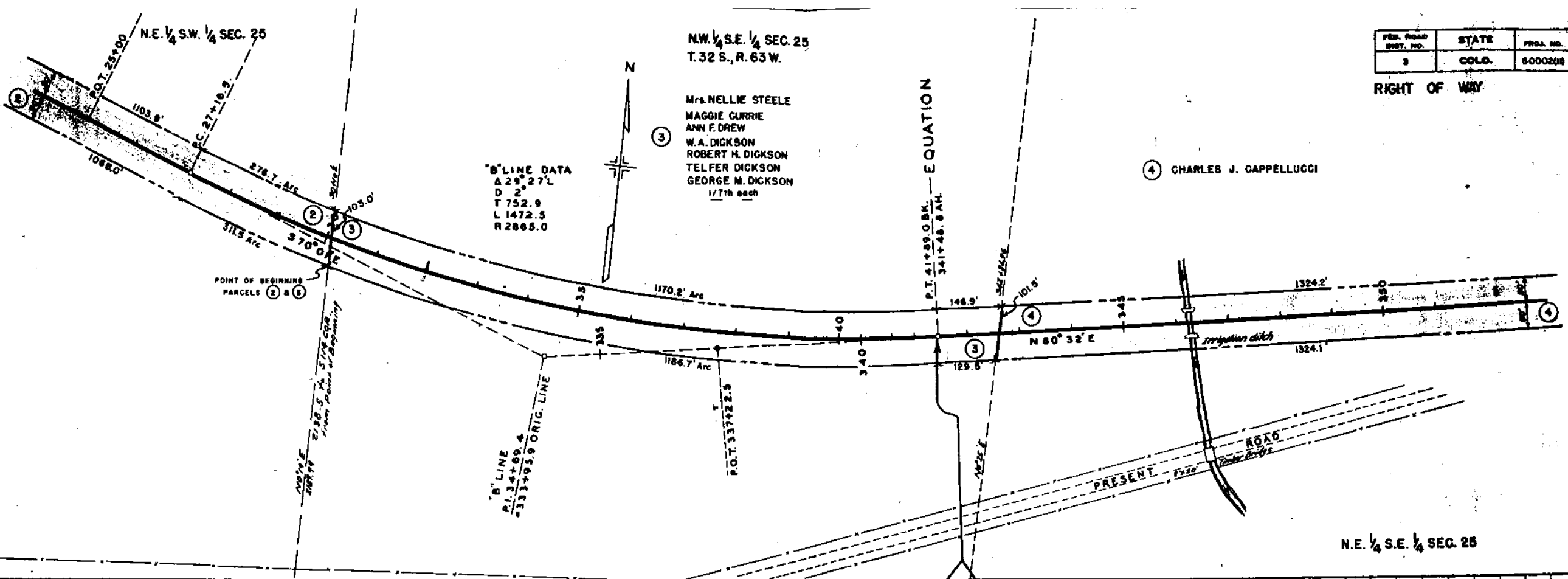
RIGHT OF WAY

NW 1/4 S.E. 1/4 SEC. 25
T. 32 S., R. 63 W.

Mrs. NELLIE STEELE
MAGGIE CURRIE
ANN F. DREW
W. A. DICKSON
ROBERT H. DICKSON
TELFER DICKSON
GEORGE M. DICKSON
1/7th each

"B" LINE DATA
Δ 29° 27' L
D 2'
T 752.9
L 1472.5
R 2865.0

"B" LINE
P.I. 34+69.4
-333+95.0 ORIG. LINE

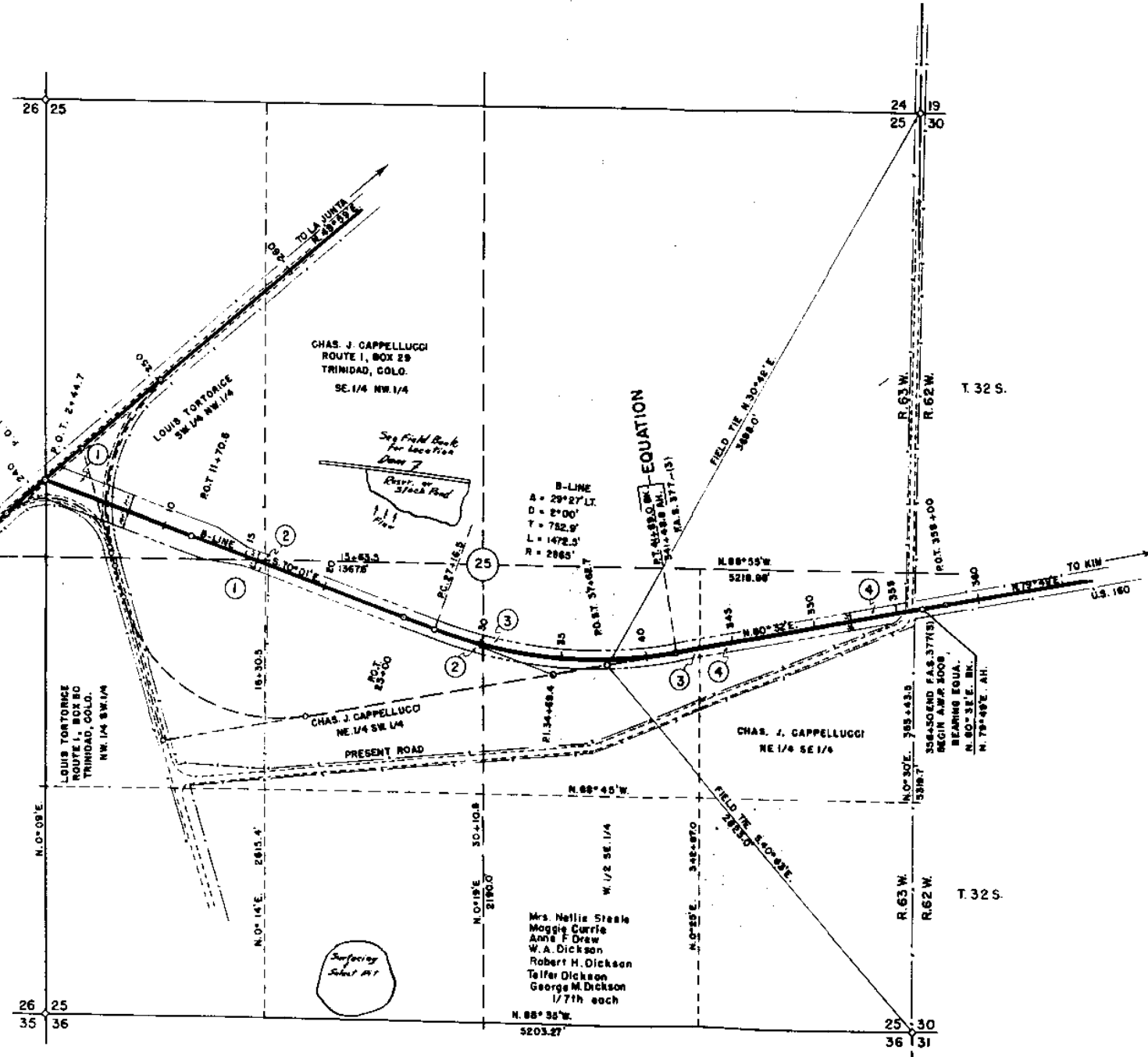


CITY OF
ENGINEER
O. H.
SOURCE

FED. ROAD DIST. NO.	STATE	PROJ. NO.	SHEET NO.	TOTAL SHEETS
3	COLO.	S 0002 (II)	8	

RIGHT OF WAY

S 0002



OWNERSHIP MAP PLAT
 OF PART OF
T. 32 S. R. 62-63W. 6 P.M.
 SHOWING CLAIMANTS WITH REGARDS TO RIGHT OF WAY FOR PROJECT S 0002 (II)

0 300 600
 SCALE IN FEET
 SCALE 1" = 400' MAR. 29, 19