

FEDERAL ROAD DIVISION NO.	DISTRICT	PROJ. NO.	SHEET NO.	TOTAL SHEETS
9	COLORADO	S 0016 (24)	1	

RIGHT OF WAY FOWLER JCT-ORDWAY

REVISIONS		
5-14-63	Changed Beg Station	FCM
5-22-63	Revised Equation	AWP

COLORADO DEPARTMENT OF HIGHWAYS

PLAN AND PROFILE OF PROPOSED FEDERAL AID PROJECT NO. S 0016(24) STATE HIGHWAY NO. 96 CROWLEY COUNTY RIGHT OF WAY

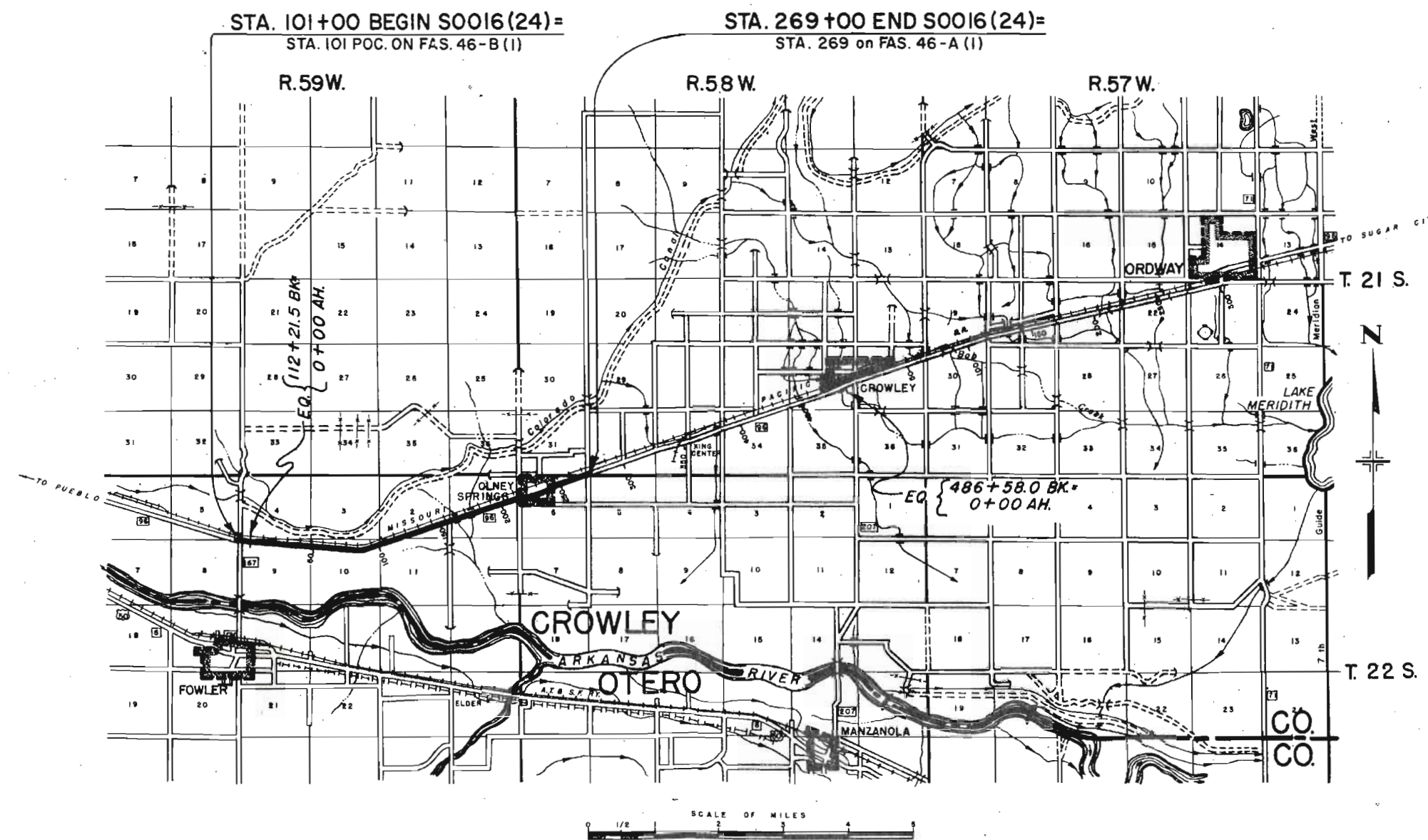
SCALES OF ORIGINAL DRAWINGS

ON PLAN, 1 IN. = 100 FT.
ON PROFILE, 1 IN. = 100 FT. HORIZONTAL
1 IN. = 10 FT. VERTICAL
GRADE LINE ON PROFILE IS SHOWN AS GRADE OF FINISHED ROAD
GROSS LENGTH OF PROJECT 28,022.8 FT. = 5.307 Miles
NET LENGTH OF PROJECT

INDEX OF SHEETS
SHEET NO.
1 - TITLE SHEET
2 - TABULATION OF PROPERTIES
3 - PLAN & PROFILE SHEET

DO NOT REMOVE
FILE COPY

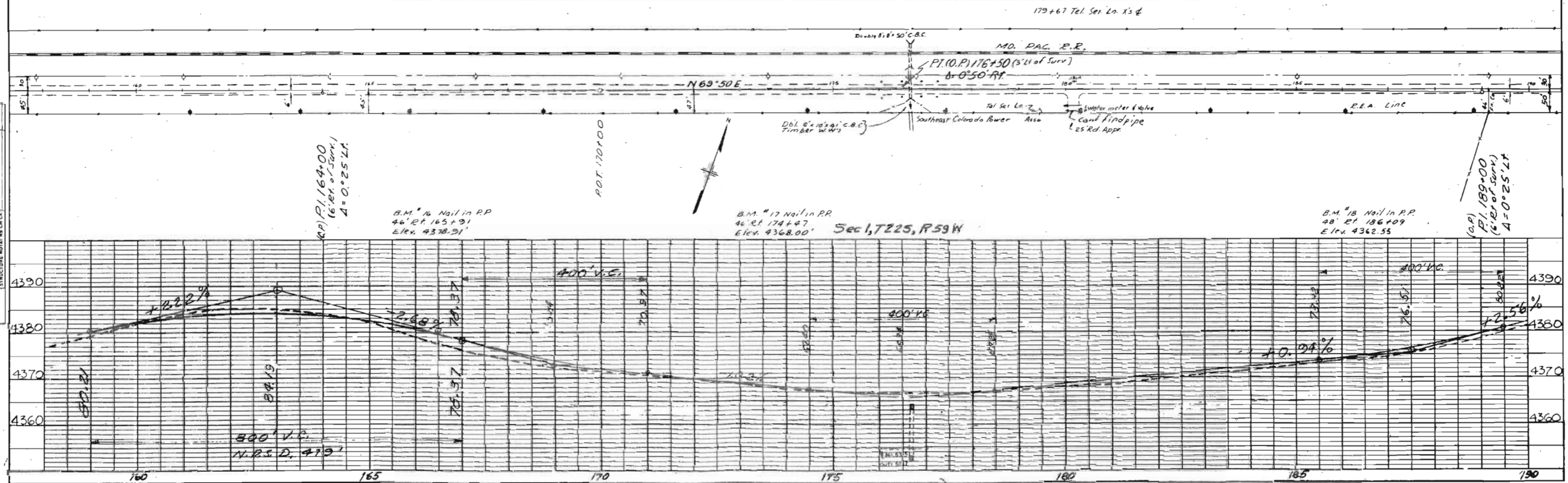
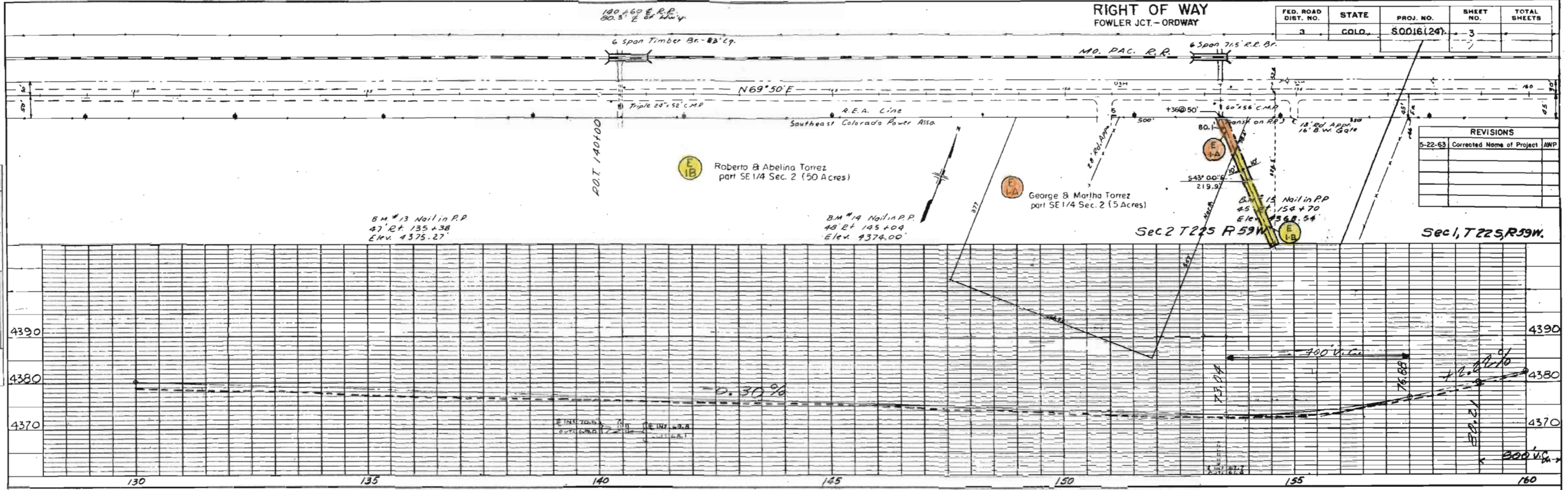
FILE COPY
DO NOT REMOVE



RIGHT OF WAY
FOWLER JCT. - ORDWAY

FED. ROAD DIST. NO.	STATE	PROJ. NO.	SHEET NO.	TOTAL SHEETS
3	COLO.	S0016(24)	3	7

REVISIONS	
5-22-63	Corrected Name of Project JWP



NOTE BOOK CHANGES CHECKED BY SURVEYOR'S OFFICE