

Unit # 1

FED. ROAD DIV. NO.	STATE	PROJ. NO.	SHEET NO.	TOTAL SHEETS
9	COLO.	S0024(13)	1	

RIGHT OF WAY

FILE

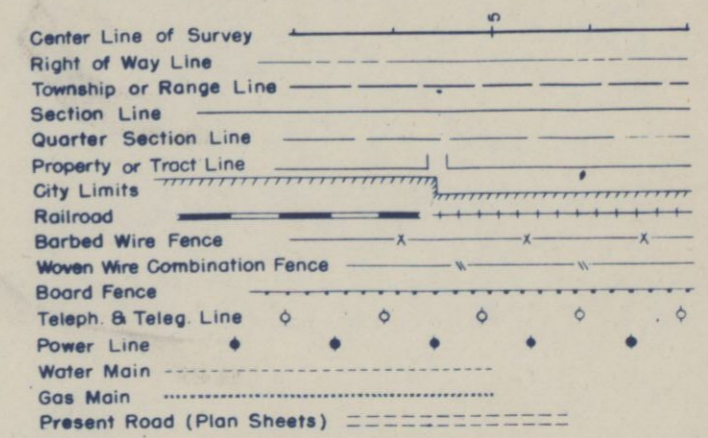
# COLORADO DEPARTMENT OF HIGHWAYS

## PLAN AND PROFILE OF PROPOSED FEDERAL AID SECONDARY PROJECT NO. S 0024(13) STATE HIGHWAY NO. 14 WELD COUNTY

INDEX OF SHEETS

SHEET NO.	DESCRIPTION
1	SKETCH MAP AND TITLE PAGE
2	TABULATION OF PROPERTIES
3-4	DELETED
5-7	ALIGNMENT PLAN AND PROFILE
8-9	OWNERSHIP MAP

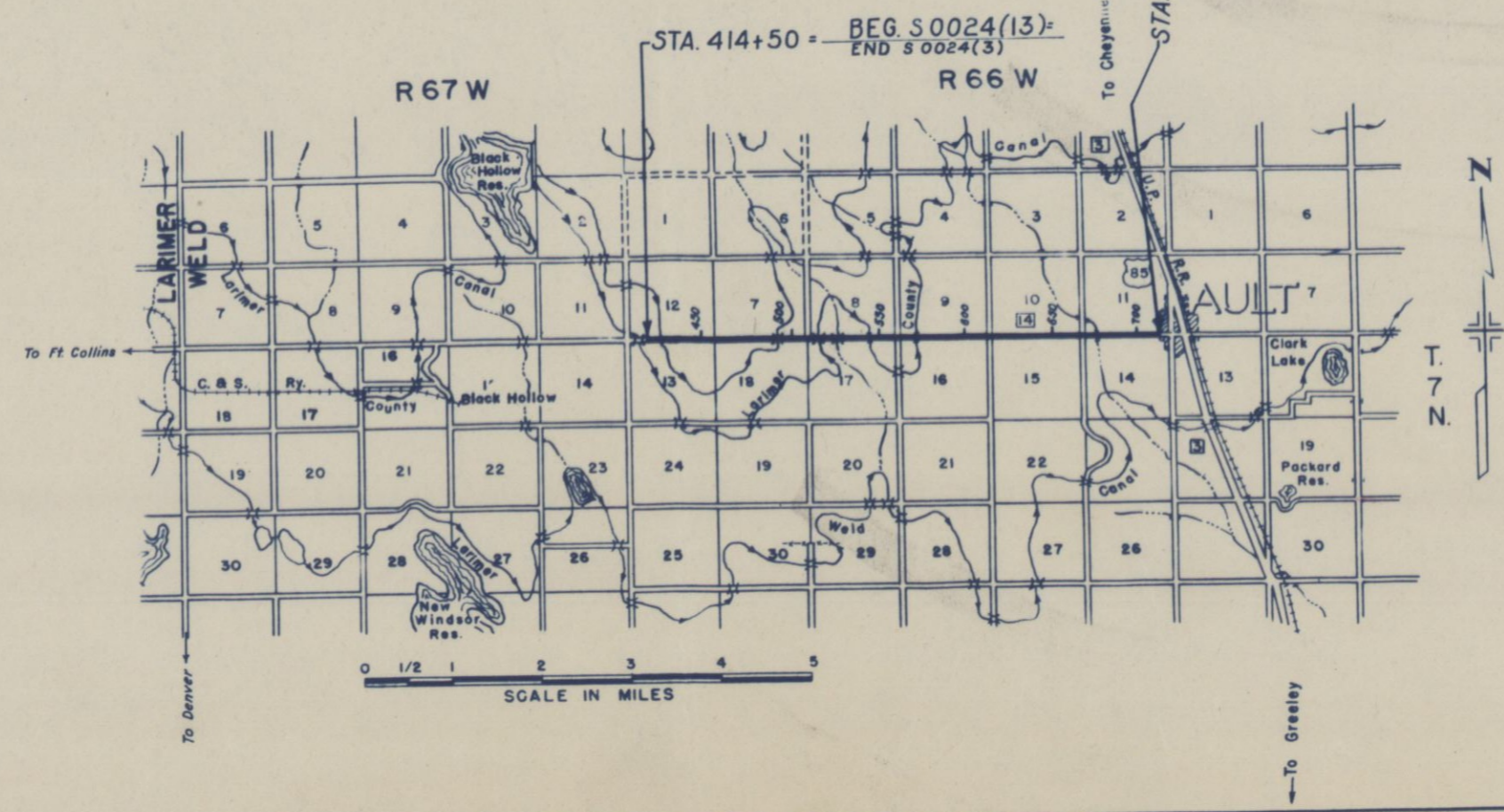
### CONVENTIONAL SIGNS



SCALES OF ORIGINAL TRACINGS  
 ON PLAN, 1 IN. = 100 FT.  
 ON PROFILE 1 IN. = 100 FT. HORIZONTAL  
 1 IN. = 10 FT. VERTICAL  
 GRADE LINE ON PROFILE IS SHOWN AS GRADE OF FINISHED ROAD  
 GROSS LENGTH OF PROJECT  
 NET LENGTH OF PROJECT

### RIGHT OF WAY

*[Handwritten signature]*



R. O. W. TABULATION OF PROPERTIES IN WELD COUNTY S. H. No. 14 PROJ. S 0024 (13)

FEDERAL ROAD DIVISION NO. 9 DISTRICT COLORADO PROJ. NO. S 0024 (13) SHEET NO. 2 TOTAL SHEETS

RIGHT OF WAY

PARCEL NO.	OWNER	ADDRESS	LOCATION	AREA IN ACRES		REMARKS	NO.
				PARCEL	TO BE ACQUIRED		
1	J. I. WYKERT et al.	BOX 72 EATON, COLO.	T. 7 N., R. 67 W.				
2	JACOB HASBROUCK	AULT, COLO.					
3	WILLIAM W. WEBSTER	1601 GLENMERE BLVD, GREELEY, COLO.	T. 7 N., R. 66 W.				
4	ROBERT K. FULLER & WILLIAM A. DANIELSON	5/8 U.S. NATIONAL BANK, DENVER, COLO.					
5	IVAN CLYDE WILLIS et al.						
6	J. NORMAN BROWN & RUTH L. BROWN	PIERCE, COLO.	S 1/2 SE 1/4 SEC. 7	2.678	2.306		
6-A	UNKNOWN		S 1/2 SE 1/4 SEC. 7	0.349	0.238		
7	DUANE S. CARTER & YVONNE L. CARTER	RT. 1 BOX 139 EATON, COLO.	S 1/2 SE 1/4 SEC. 7	1.902	1.848		
8	ROSE WEBER	RT. 1 AULT, COLO.	S 1/2 S 1/2 SEC. 8	5.210	1.653		
E-6a	UNKNOWN		T. 7 N., R. 66 W.				
E-6b	UNKNOWN		S 1/2 SE 1/4 SEC. 7	0.213	0.213		
E-6c	ROY E. SHAW & GOLDIE E. SHAW	AULT, COLO.	SW 1/4 SE 1/4 SEC. 7	0.356	0.356		
E-7a	DUANE S. CARTER & YVONNE L. CARTER	RT. 1 BOX 139 EATON, COLO.	NW 1/4 NE 1/4 SEC. 18	0.086	0.086		
			S 1/2 SE 1/4 SEC. 7	0.078	0.078		

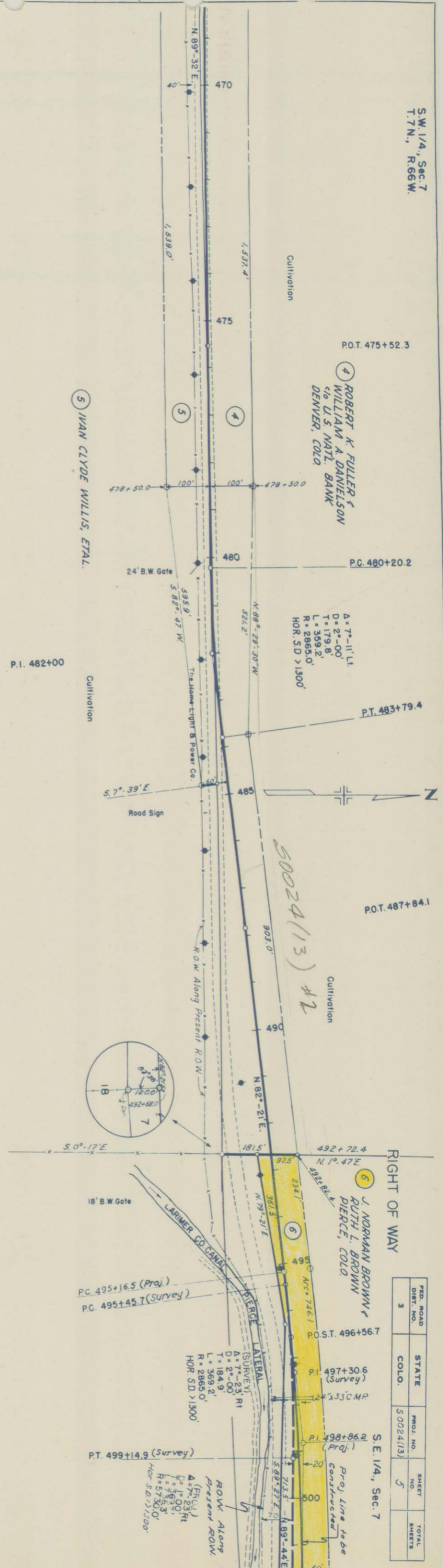
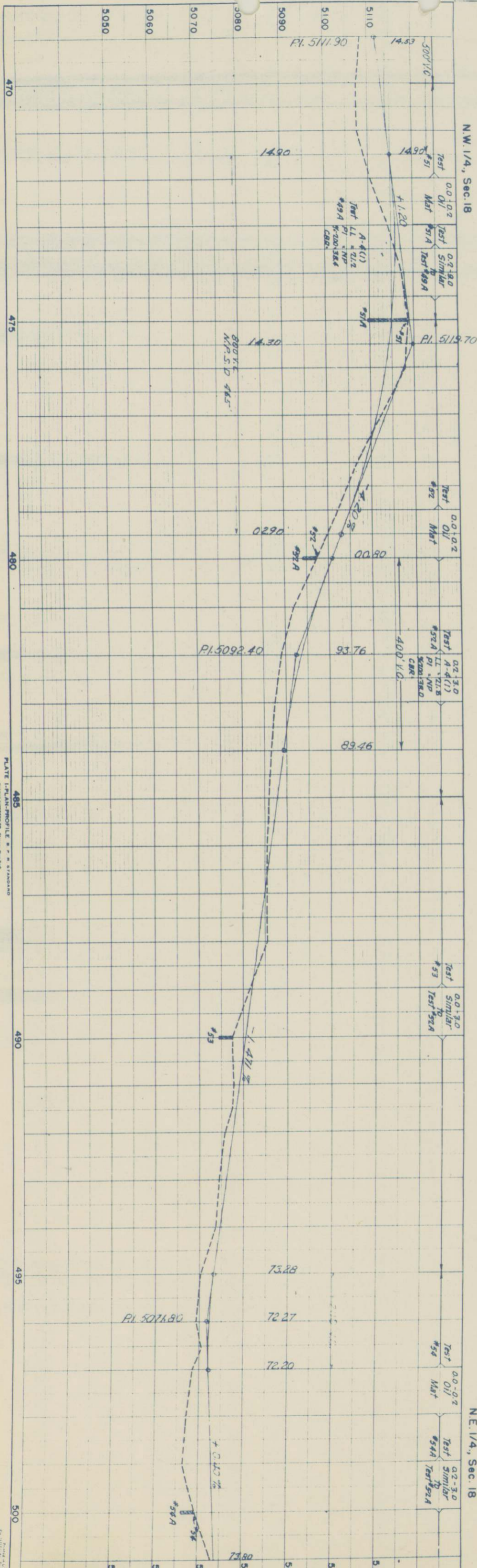
PROFILE  
 SURVEYED  
 PLOTTED  
 GRADES CHECKED  
 H.W. NOTES  
 STRUCTURE

Harmer J. Winter 10/49  
 R.C. Parsons 11/49

PLAN  
 SURVEYED  
 PLOTTED  
 ALIGNMENT CHECKED  
 H.W. NOTES  
 AT OF RAY CHECKED

Harmer J. Winter 10/49  
 R.C. Parsons 11/49

S.W. 1/4, Sec. 7  
 T. 7N., R. 66W.



FED. ROAD DIST. NO.	STATE	PROJ. NO.	SHEET NO.	TOTAL SHEETS
3	COLO.	50024(13)	5	

PLATE 1-PLAN-PROFILE R.C. PARSONS





FED. ROAD DIVISION NO.	DISTRICT	PROJ. NO.	SHEET NO.	TOTAL SHEETS
9	COLO.	S 0024 (13)	8	

**RIGHT OF WAY OWNERSHIP MAP**  
 SHOWING CLAIMANTS WITH REGARD TO RIGHT OF WAY FOR PROJECT S 0024 (13)  
 ORIGINAL SCALE 1" = 400'

T. 7 N.  
R. 67 W.

T. 7 N.  
R. 66 W.

T. 7 N.  
R. 65 W.

N 0°17'E  
305+04.2

N 0°25'E  
357+42.9

S 0°31'W

S 0°18'E

S 0°25'W  
278+55

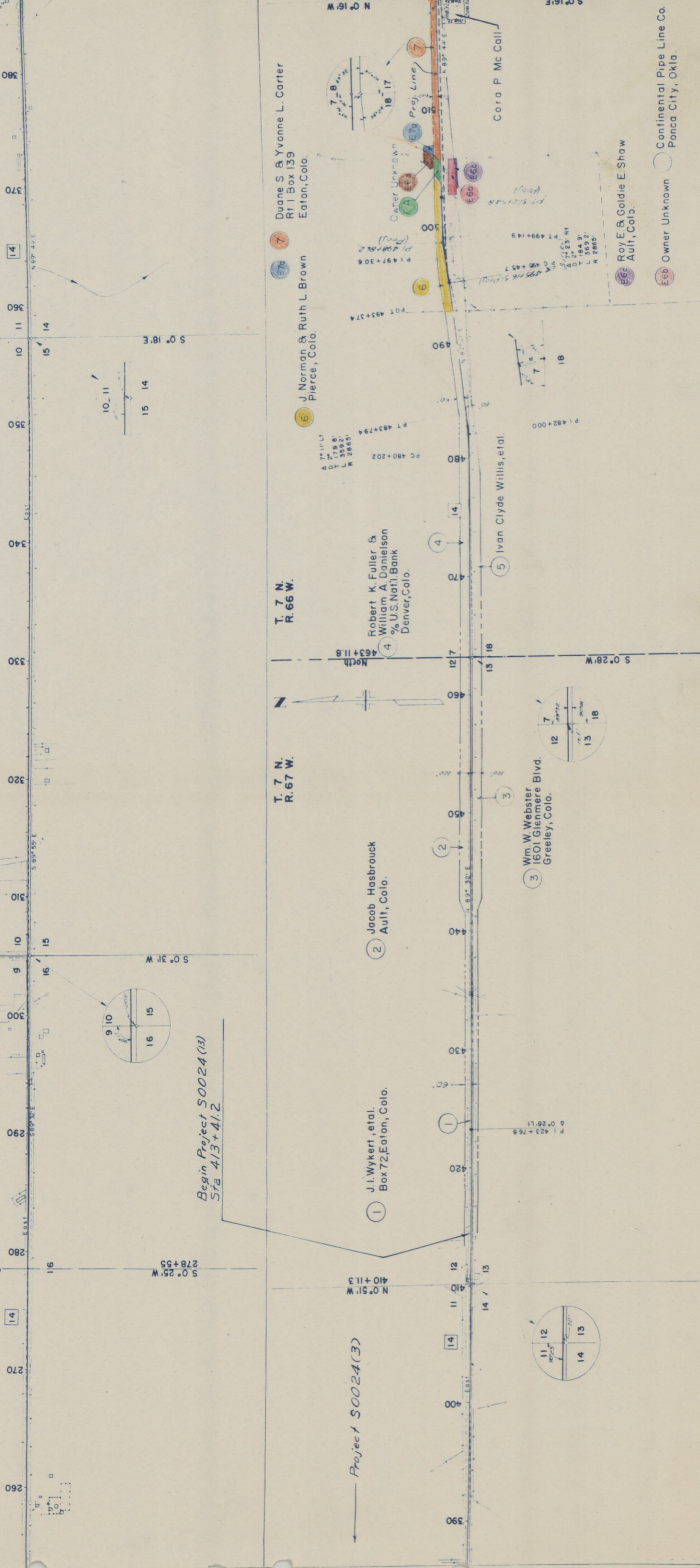
N 0°51'W  
410+11.3

S 0°28'W

S 0°16'E

Begin Project S0024(13)  
Sta 413+41.2

Project S0024(3)



Cora P. McCall

7 Duane S. & Yvonne L. Carter  
Rt. 1 Box 139  
Eaton, Colo.

6 J. Norman & Ruth L. Brown  
Pierce, Colo.

4 Robert K. Fuller & William A. Danielson  
% U.S. Nat'l. Bank  
Denver, Colo.

3 Wm. W. Webster  
1601 Glenmere Blvd.  
Greeley, Colo.

2 Jacob Hasbrouck  
Ault, Colo.

1 J.I. Wykert, et al.  
Box 72, Eaton, Colo.

9 Roy E. & Goldie E. Shaw  
Ault, Colo.

Continental Pipe Line Co.  
Ponca City, Okla.

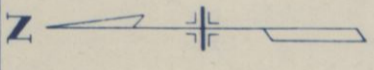
Owner Unknown

FED. ROAD DIVISION NO.	DISTRICT COLO.	PROJ. NO.	SHEET NO.	TOTAL SHEETS
9	S 0024 (13)	9	9	13

**RIGHT OF WAY OWNERSHIP MAP**

SHOWING CLAIMANTS WITH REGARD TO RIGHT OF WAY FOR PROJECT, S 0024 (13)  
ORIGINAL SCALE 1" = 400'

Arvel B. & Laura Pearl Stewart  
Rt. 1 Ault, Colo.



T. 7 N.  
R. 66 W.

Olga C. & John Narin  
Ault, Colo.

John & Louise Schlothauer  
Windsor, Colo.

Rose Weber  
Rt. 1 Ault Colorado.

Otho G. Wykert  
609 Graefe  
Ault, Colo.

Otho Guy Wykert  
609 Graefe  
Ault, Colo.

C.G. Veden  
Ault, Colo.

Albert & Helen Heerman  
Ault, Colo.

Myrtle Carroll Wykert  
Eaton, Colo.

Otho Guy Wykert  
609 Graefe  
Ault, Colo.

John D. & Myrl F. Mobley  
Ault, Colo.

A 1° 15' 30" RI.  
D 62.5'  
L 125.0'  
E 0.34'  
R 57.50'

Irene M. Lewis  
Ault, Colo.

519+30.0  
N 0° 16' W

525+18.7  
N 0° 10' 30" W

530  
535  
540  
545  
550

560  
565  
570  
575  
580

590  
595  
600  
605  
610

620  
625  
630  
635  
640

650  
655  
660  
665  
670

680  
685  
690  
695  
700

710  
715  
720  
725  
730

740  
745  
750  
755  
760

770  
775  
780  
785  
790

795

5° 10' 30" E  
P.I. 625+12.4  
A 0° 22' LT

5° 02' E  
P.I. 733+87.7  
A 1° 12' LT

5° 51' E  
P.I. 578+36.3  
A 0° 39' LT

5° 06' 30" E  
P.I. 678+58.5  
A 0° 45' LT

P.I. 538+35.7  
A 0° 35' LT

P.I. 535+10.5  
A 0° 35' LT

P.I. 532+76.2  
A 0° 35' LT

P.I. 529+42.9  
A 0° 35' LT

P.I. 537+06.3  
A 0° 35' LT

P.I. 535+14.6  
A 0° 35' LT

P.I. 531+09.6  
A 0° 35' LT

P.I. 538+35.7  
A 0° 35' LT

P.I. 535+10.5  
A 0° 35' LT

P.I. 532+76.2  
A 0° 35' LT

P.I. 529+42.9  
A 0° 35' LT

P.I. 537+06.3  
A 0° 35' LT

P.I. 535+14.6  
A 0° 35' LT

P.I. 531+09.6  
A 0° 35' LT

P.I. 538+35.7  
A 0° 35' LT

P.I. 535+10.5  
A 0° 35' LT

P.I. 532+76.2  
A 0° 35' LT

P.I. 529+42.9  
A 0° 35' LT

P.I. 537+06.3  
A 0° 35' LT

P.I. 535+14.6  
A 0° 35' LT

P.I. 531+09.6  
A 0° 35' LT

P.I. 538+35.7  
A 0° 35' LT

P.I. 535+10.5  
A 0° 35' LT

P.I. 532+76.2  
A 0° 35' LT

P.I. 529+42.9  
A 0° 35' LT

P.I. 537+06.3  
A 0° 35' LT

P.I. 535+14.6  
A 0° 35' LT

P.I. 531+09.6  
A 0° 35' LT

P.I. 538+35.7  
A 0° 35' LT

P.I. 535+10.5  
A 0° 35' LT

P.I. 532+76.2  
A 0° 35' LT

P.I. 529+42.9  
A 0° 35' LT

P.I. 537+06.3  
A 0° 35' LT

P.I. 535+14.6  
A 0° 35' LT

P.I. 531+09.6  
A 0° 35' LT

P.I. 538+35.7  
A 0° 35' LT

P.I. 535+10.5  
A 0° 35' LT

P.I. 532+76.2  
A 0° 35' LT

P.I. 529+42.9  
A 0° 35' LT

P.I. 537+06.3  
A 0° 35' LT

P.I. 535+14.6  
A 0° 35' LT

P.I. 531+09.6  
A 0° 35' LT

P.I. 538+35.7  
A 0° 35' LT

P.I. 535+10.5  
A 0° 35' LT

P.I. 532+76.2  
A 0° 35' LT

P.I. 529+42.9  
A 0° 35' LT

P.I. 537+06.3  
A 0° 35' LT

P.I. 535+14.6  
A 0° 35' LT

P.I. 531+09.6  
A 0° 35' LT

P.I. 538+35.7  
A 0° 35' LT

P.I. 535+10.5  
A 0° 35' LT

P.I. 532+76.2  
A 0° 35' LT

P.I. 529+42.9  
A 0° 35' LT

P.I. 537+06.3  
A 0° 35' LT

P.I. 535+14.6  
A 0° 35' LT

P.I. 531+09.6  
A 0° 35' LT

P.I. 538+35.7  
A 0° 35' LT

P.I. 535+10.5  
A 0° 35' LT

P.I. 532+76.2  
A 0° 35' LT

P.I. 529+42.9  
A 0° 35' LT

P.I. 537+06.3  
A 0° 35' LT

P.I. 535+14.6  
A 0° 35' LT

P.I. 531+09.6  
A 0° 35' LT

P.I. 538+35.7  
A 0° 35' LT

P.I. 535+10.5  
A 0° 35' LT

P.I. 532+76.2  
A 0° 35' LT

P.I. 529+42.9  
A 0° 35' LT

P.I. 537+06.3  
A 0° 35' LT

P.I. 535+14.6  
A 0° 35' LT

P.I. 531+09.6  
A 0° 35' LT

P.I. 538+35.7  
A 0° 35' LT

P.I. 535+10.5  
A 0° 35' LT

P.I. 532+76.2  
A 0° 35' LT

P.I. 529+42.9  
A 0° 35' LT

P.I. 537+06.3  
A 0° 35' LT

P.I. 535+14.6  
A 0° 35' LT

P.I. 531+09.6  
A 0° 35' LT

P.I. 538+35.7  
A 0° 35' LT

P.I. 535+10.5  
A 0° 35' LT

P.I. 532+76.2  
A 0° 35' LT

P.I. 529+42.9  
A 0° 35' LT

P.I. 537+06.3  
A 0° 35' LT

P.I. 535+14.6  
A 0° 35' LT

P.I. 531+09.6  
A 0° 35' LT

P.I. 538+35.7  
A 0° 35' LT

P.I. 535+10.5  
A 0° 35' LT

P.I. 532+76.2  
A 0° 35' LT

P.I. 529+42.9  
A 0° 35' LT

P.I. 537+06.3  
A 0° 35' LT

P.I. 535+14.6  
A 0° 35' LT

P.I. 531+09.6  
A 0° 35' LT

P.I. 538+35.7  
A 0° 35' LT

P.I. 535+10.5  
A 0° 35' LT

P.I. 532+76.2  
A 0° 35' LT

P.I. 529+42.9  
A 0° 35' LT

P.I. 537+06.3  
A 0° 35' LT

P.I. 535+14.6  
A 0° 35' LT

P.I. 531+09.6  
A 0° 35' LT

P.I. 538+35.7  
A 0° 35' LT

P.I. 535+10.5  
A 0° 35' LT

P.I. 532+76.2  
A 0° 35' LT

P.I. 529+42.9  
A 0° 35' LT

P.I. 537+06.3  
A 0° 35' LT

P.I. 535+14.6  
A 0° 35' LT

P.I. 531+09.6  
A 0° 35' LT

P.I. 538+35.7  
A 0° 35' LT

P.I. 535+10.5  
A 0° 35' LT

P.I. 532+76.2  
A 0° 35' LT

P.I. 529+42.9  
A 0° 35' LT

P.I. 537+06.3  
A 0° 35' LT

P.I. 535+14.6  
A 0° 35' LT

P.I. 531+09.6  
A 0° 35' LT

P.I. 538+35.7  
A 0° 35' LT

P.I. 535+10.5  
A 0° 35' LT

P.I. 532+76.2  
A 0° 35' LT

P.I. 529+42.9  
A 0° 35' LT

P.I. 537+06.3  
A 0° 35' LT

P.I. 535+14.6  
A 0° 35' LT

P.I. 531+09.6  
A 0° 35' LT

P.I. 538+35.7  
A 0° 35' LT

P.I. 535+10.5  
A 0° 35' LT

P.I. 532+76.2  
A 0° 35' LT

P.I. 529+42.9  
A 0° 35' LT

P.I. 537+06.3  
A 0° 35' LT

P.I. 535+14.6  
A 0° 35' LT

P.I. 531+09.6  
A 0° 35' LT

P.I. 538+35.7  
A 0° 35' LT

P.I. 535+10.5  
A 0° 35' LT

P.I. 532+76.2  
A 0° 35' LT

P.I. 529+42.9  
A 0° 35' LT

P.I. 537+06.3  
A 0° 35' LT

P.I. 535+14.6  
A 0° 35' LT

P.I. 531+09.6  
A 0° 35' LT

P.I. 538+35.7  
A 0° 35' LT

P.I. 535+10.5  
A 0° 35' LT

P.I. 532+76.2  
A 0° 35' LT

P.I. 529+42.9  
A 0° 35' LT

P.I. 537+06.3  
A 0° 35' LT

P.I. 535+14.6  
A 0° 35' LT

P.I. 531+09.6  
A 0° 35' LT

P.I. 538+35.7  
A 0° 35' LT

P.I. 535+10.5  
A 0° 35' LT

P.I. 532+76.2  
A 0° 35' LT

P.I. 529+42.9  
A 0° 35' LT

P.I. 537+06.3  
A 0° 35' LT

P.I. 535+14.6  
A 0° 35' LT

P.I. 531+09.6  
A 0° 35' LT

P.I. 538+35.7  
A 0° 35' LT

P.I. 535+10.5  
A 0° 35' LT

P.I. 532+76.2  
A 0° 35' LT

P.I. 529+42.9  
A 0° 35' LT

P.I. 537+06.3  
A 0° 35' LT

P.I. 535+14.6  
A 0° 35' LT

P.I. 531+09.6  
A 0° 35' LT

P.I. 538+35.7  
A 0° 35' LT

P.I. 535+10.5  
A 0° 35' LT

P.I. 532+76.2  
A 0° 35' LT

P.I. 529+42.9  
A 0° 35' LT

P.I. 537+06.3  
A 0° 35' LT

P.I. 535+14.6  
A 0° 35' LT

P.I. 531+09.6  
A 0° 35' LT

P.I. 538+35.7  
A 0° 35' LT

P.I. 535+10.5  
A 0° 35' LT

P.I. 532+76.2  
A 0° 35' LT

P.I. 529+42.9  
A 0° 35' LT

P.I. 537+06.3  
A 0° 35' LT

P.I. 535+14.6  
A 0° 35' LT

P.I. 531+09.6  
A 0° 35' LT

P.I. 538+35.7  
A 0° 35' LT

P.I. 535+10.5  
A 0