

FED. ROAD DIV. NO.	DISTRICT	F.A.S. PROJ. NO.	SHEET NO.	TOTAL SHEETS
9	COLO.	S 0024(2)	1	

RIGHT OF WAY

CONVENTIONAL SIGNS

CENTER LINE	TITLE SHEET
RIGHT OF WAY LINE	
COUNTY LINE	
TOWNSHIP OR RANGE LINE	T. 6 S., R. 89 W.
SECTION LINE	T. 7 S., R. 89 W.
QUARTER SECTION LINE	
SIXTEENTH SECTION LINE	
RAILROAD	
BARBED WIRE FENCE	
WOVEN WIRE - COMBINATION FENCE	
TELEPH. & TELEG. LINE	
POWER LINE	
DETOUR	
PRESENT ROAD (PLAN SHEETS)	

COLORADO

STATE HIGHWAY DEPARTMENT

PLAN AND PROFILE OF PROPOSED

FEDERAL AID SECONDARY PROJECT NO. S 0024 (2)

STATE HIGHWAY NO. 14

LOGAN COUNTY

SHEET NO. 1	TITLE SHEET
2	TABULATION OF PROPERTIES
3-5	PLAN & PROFILE SHEETS
	SHOWING RIGHT OF WAY

RIGHT OF WAY

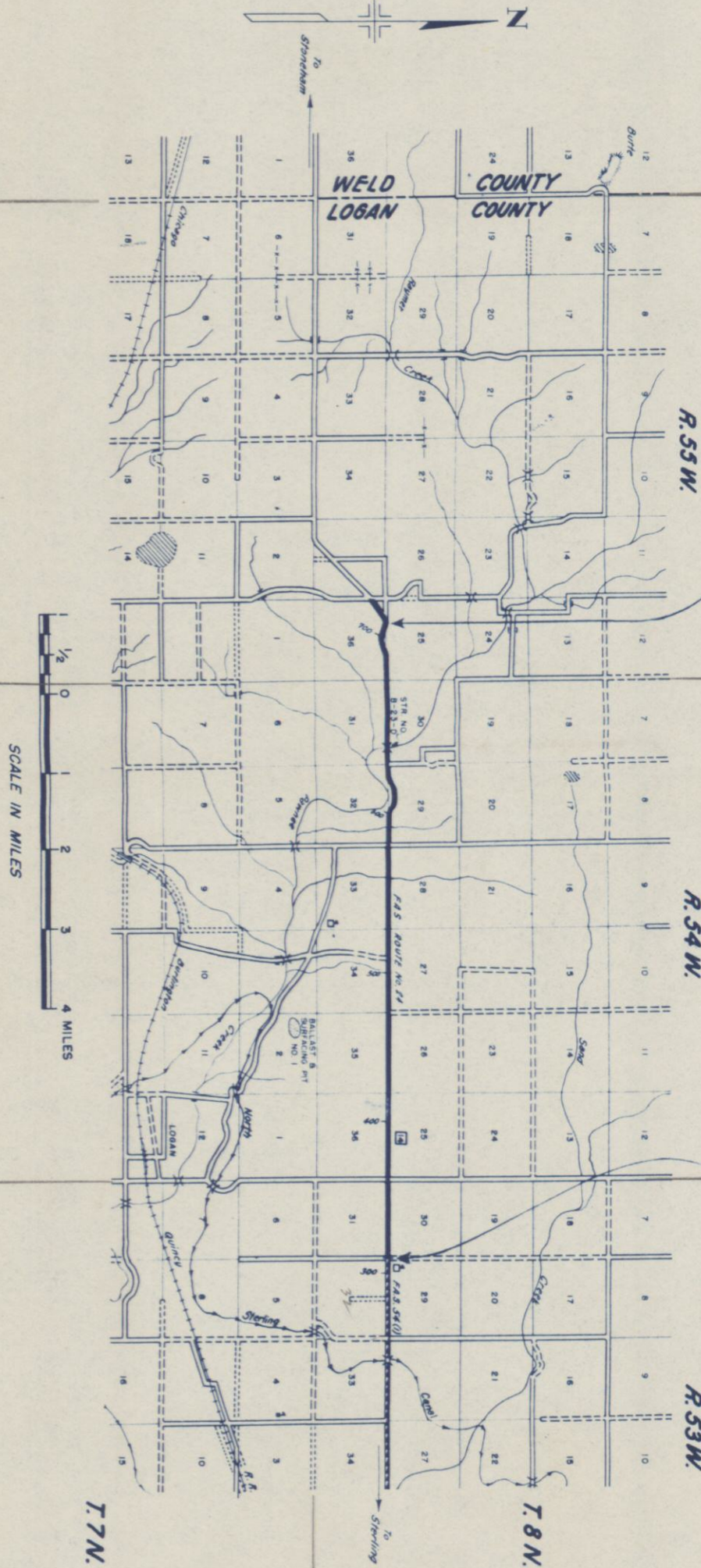
CONSTR. ENGR'S. COPY

SCALES OF ORIGINAL TRACINGS

ON PLAN. 1 IN. = 200 FT.
ON PROFILE. 1 IN. = 200 FT. HORIZONTAL
1 IN. = 20 FT. VERTICAL
GRADE LINE ON PROFILE IS SHOWN AS GRADE OF FINISHED ROAD
GROSS LENGTH OF PROJECT 40,207.9 Ft. = 7.615 Miles
NET LENGTH OF PROJECT 39,607.3 Ft. = 7.501 Miles

STA. 711+37.5=END S 0024 (2)

STA. 309+29.6=BEGIN S 0024(2)=
END F.A.S. 54(1)



By To State 2-2-50

NE 1/4 SEC. 32 T. 8 N., R. 54 W.

NW 1/4 SEC. 32 T. 8 N., R. 54 W.

STA. 309+29.6=BEGINNING S 0024(2)
NOTE: NO ADDITIONAL RIGHT OF WAY REQUIRED
FROM STA. 309+29.6 TO STA. 590+75.1

SEC. 32 T. 8 N., R. 54 W.

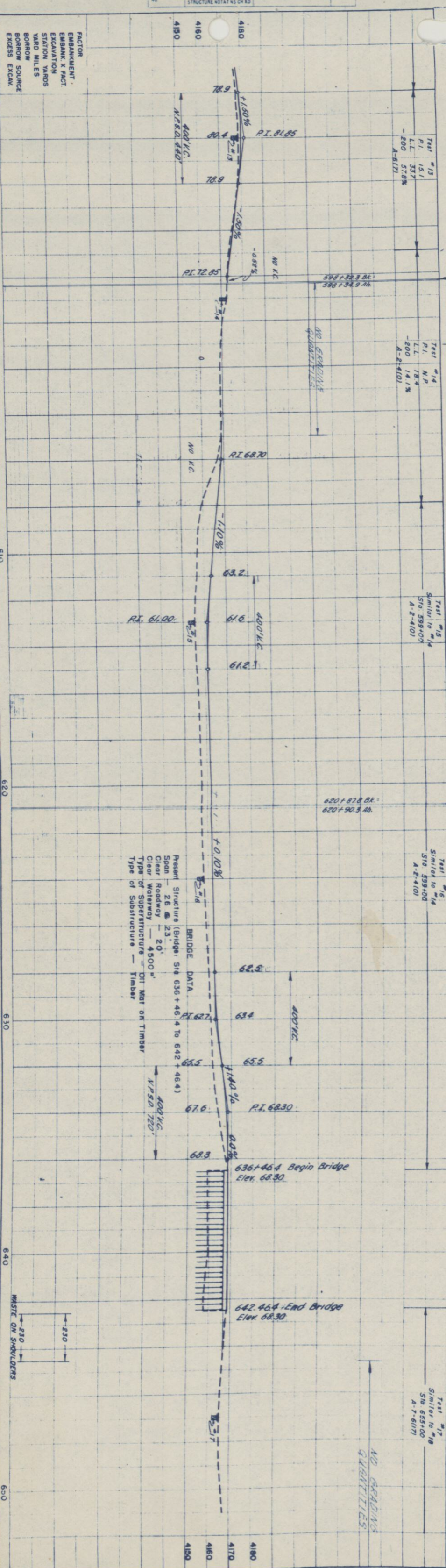
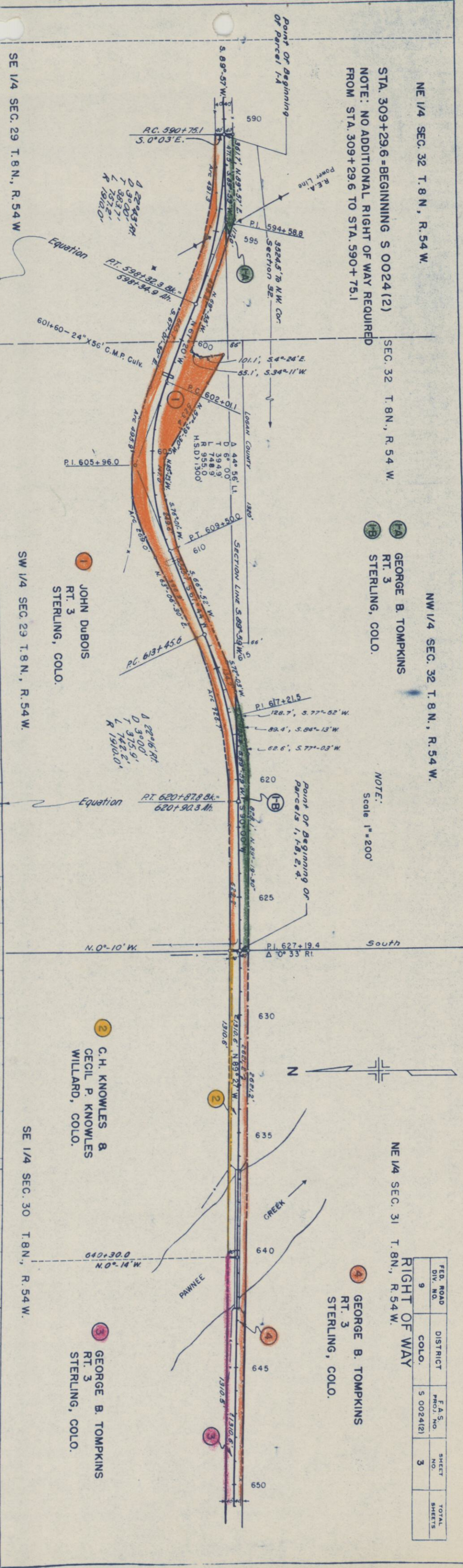
GEORGE B. TOMPKINS
RT. 3
STERLING, COLO.

NOTE:
Scale 1"=200'

NE 1/4 SEC. 31 T. 8 N., R. 54 W.

GEORGE B. TOMPKINS
RT. 3
STERLING, COLO.

FED. ROAD DIV. NO.	DISTRICT	F.A.S. PROJ. NO.	SHEET NO.	TOTAL SHEETS
9	COLO.	5 0024(2)	3	



FED. ROAD DIV. NO.	DISTRICT	PRO. NO.	SHEET NO.	TOTAL SHEETS
9	COLO. *	S 0024(2)	4	

NE 1/4 SEC. 31 T. 8 N., R. 54 W. NW 1/4 SEC. 36 T. 8 N., R. 55 W. NE 1/4 SEC. 36 T. 8 N., R. 55 W. NW 1/4 SEC. 36

GEORGE B. TOMPKINS
RT. 3
STERLING, COLO.

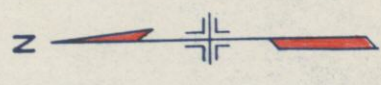
JOSEPH OTZENBERGER
WILLARD, COLO.

STATE OF COLORADO

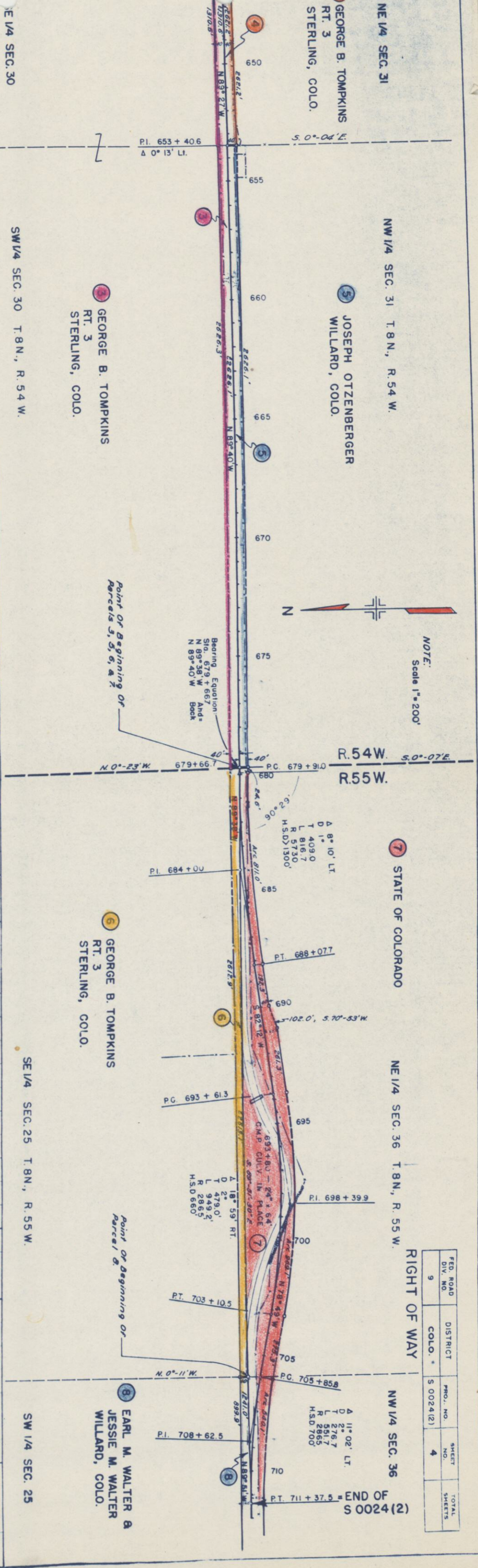
GEORGE B. TOMPKINS
RT. 3
STERLING, COLO.

GEORGE B. TOMPKINS
RT. 3
STERLING, COLO.

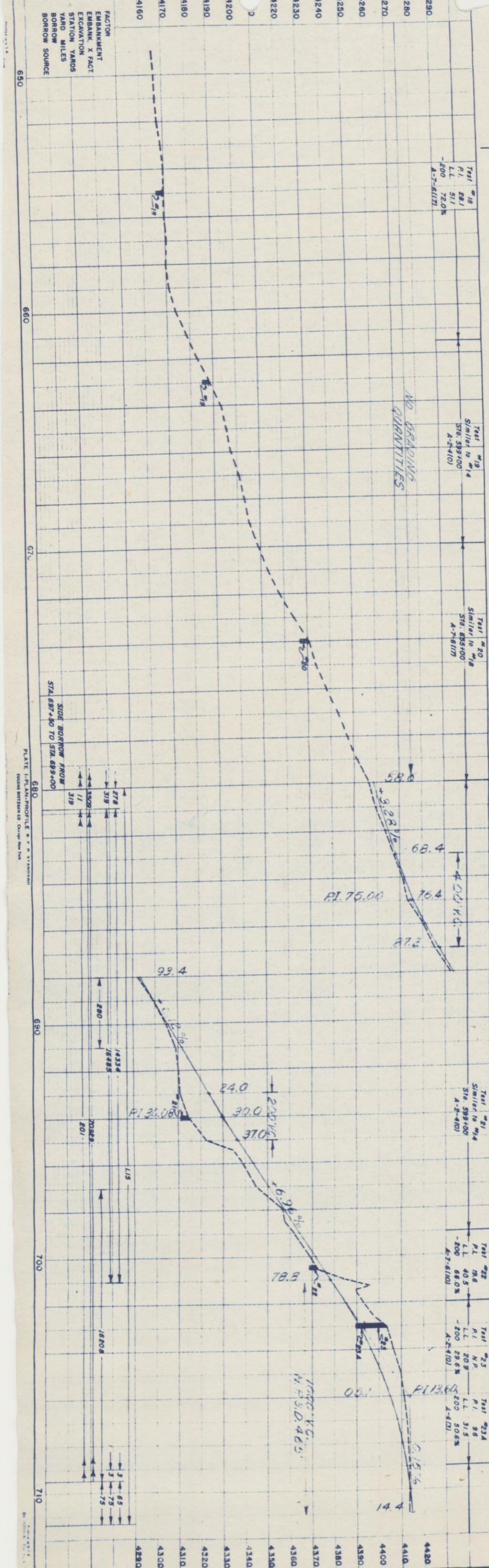
EARL M. WALTER &
JESSIE M. WALTER
WILLARD, COLO.



NOTE:
Scale 1"=200'



NO GRADINGS
QUANTITIES



FED. ROAD DIV. NO.	DISTRICT	PROJ. NO.	SHEET NO.	TOTAL SHEETS
9	COLO.	S 0024(2)	5	

SEC. 35 T. 8N., R. 55W.
RIGHT OF WAY

NOTE:
Scale 1" = 200'

STATE OF COLORADO

NW 1/4 SEC. 36 T. 8N., R. 55W.

8
EARL M. WALTER &
JESSIE M. WALTER
WILLARD, COLO.

SW 1/4 SEC. 25 T. 8N., R. 55W.

SEC. 35 T. 8N., R. 55W.

NO GRADING
QUANTITIES

721
P.I. 721+168
L.L. 710.0
A-2-4(10)

725
Similar to 723
Sta. 703+00
A-2-4(10)

726
Similar to 723
Sta. 703+00
A-2-4(10)

727
Similar to 723
Sta. 703+00
A-2-4(10)

728
Similar to 723
Sta. 703+00
A-2-4(10)

729
Similar to 723
Sta. 703+00
A-2-4(10)

4430
4440
4450
4460
4470
4480
4490
4500

4430
4440
4450
4460
4470
4480
4490
4500

710

720

730

740

750

760

770

10/1/48
H.W.W.
NOTE BOOK
NO
STRUCTURE NOTAT NO CH KD

PLATE 1-PLAN-PROFILE 8" x 11" STANDARD
RECENT EDITION CO. Change New York

10/1/48
H.W.W.
NOTE BOOK
NO
STRUCTURE NOTAT NO CH KD