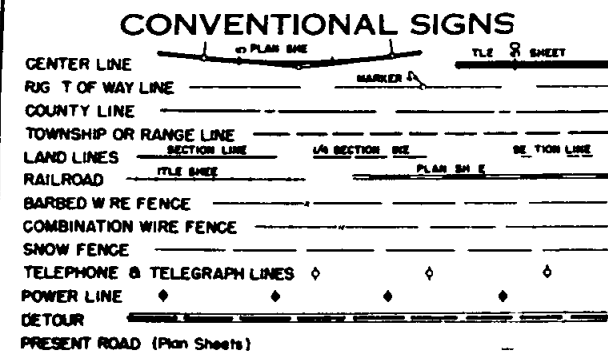


LO OR DO DE HIGHWAY  
 CHIEF  
 JANUARY 1944  
 TITLE SHEET

# COLORADO DEPARTMENT OF HIGHWAYS

|    |    |          |            |    |
|----|----|----------|------------|----|
| RE | NO | DIVISION | ET         | DT |
| 9  |    | DO       | S 0028(12) |    |

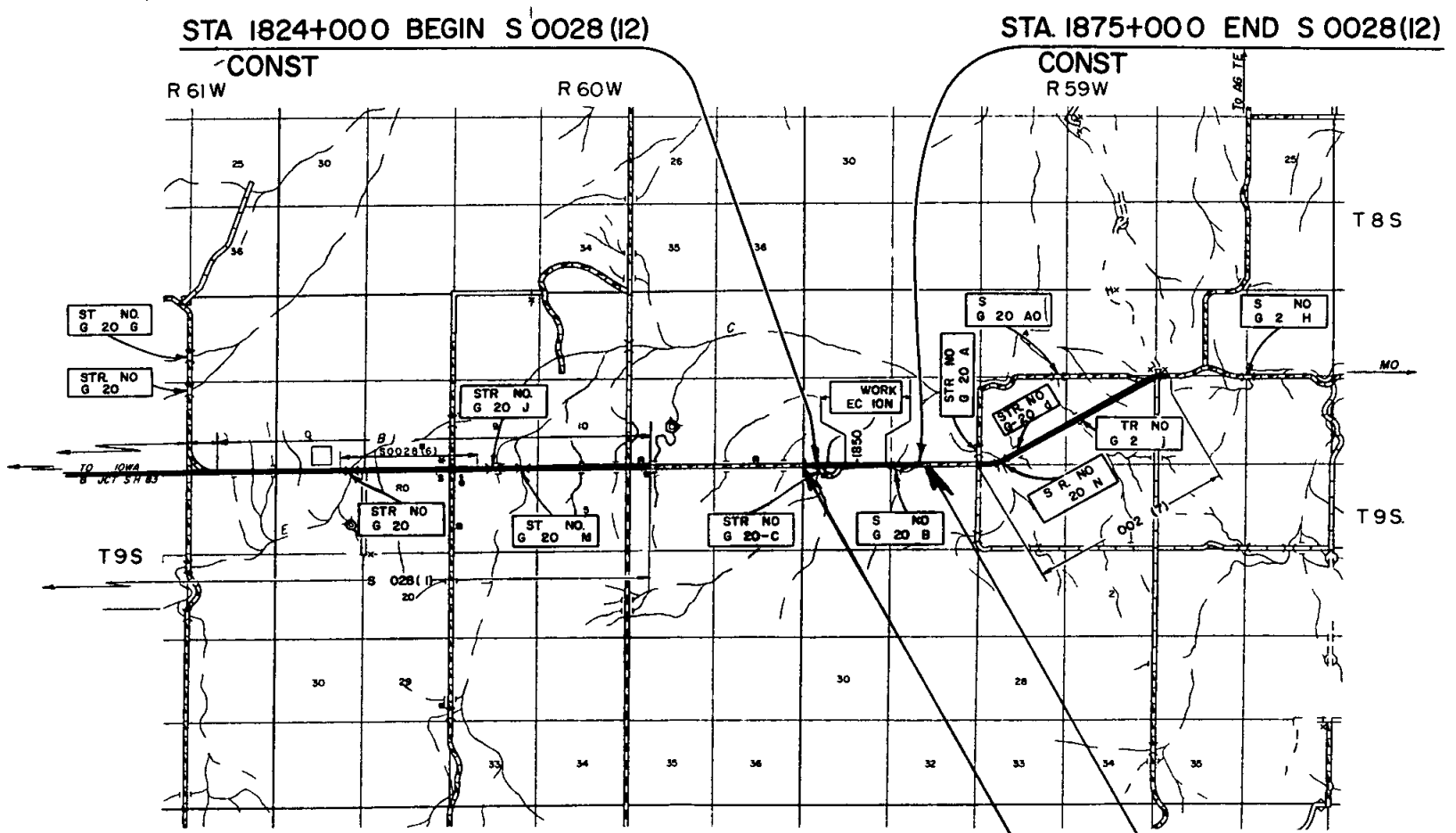
| RIGHT OF WAY<br>EAST OF KIOWA |  | REVISIONS |
|-------------------------------|--|-----------|
|                               |  |           |
|                               |  |           |
|                               |  |           |
|                               |  |           |



## PLAN AND PROFILE OF PROPOSED FEDERAL AID PROJECT NO S 0028 (12) STATE HIGHWAY NO 86 ELBERT COUNTY RIGHT OF WAY

INDEX OF SHEETS  
 SHEET NO  
 1 Title Sheet  
 2 Tabulation of Properties  
 3 5 Plan and Profile Sheets

SCALES OF ORIGINAL DRAWINGS  
 ON PLAN 1 IN = 100 FT  
 ON PROFILE 1 IN = 100 FT HORIZONTAL  
 1 IN = 10 FT VERTICAL  
 GRADE LINE ON PROFILE IS SHOWN AS GRADE OF FINISHED ROAD  
 NET LENGTH OF PROJECT IN ROW 1237 MILES



BEG ROW S 0028(12)  
 STA 1813+69.9

END ROW S 0028(12)  
 STA 1879+00





SE 1/4 SEC 12  
T 9 S R 60 W

SW 1/4 SEC 7  
T 9 S R 59 W

| DIST | COUNTY | PRO NO     | NO | TOT SW |
|------|--------|------------|----|--------|
|      |        | 5 0028(12) | 3  |        |

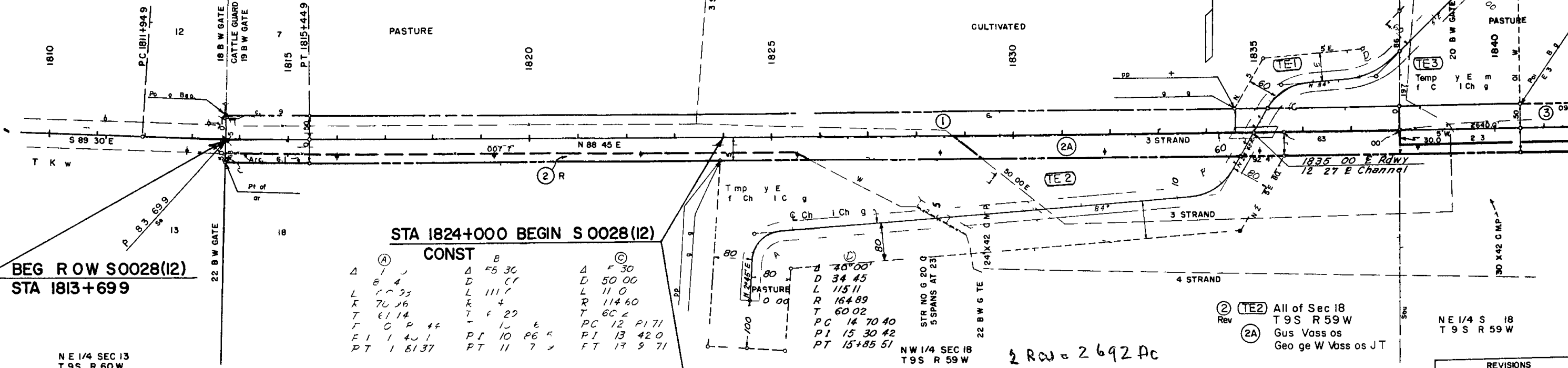
RIGHT OF WAY  
EAST OF KIOWA

SE 1/4 S 7  
T 9 S R 59 W

Δ 1 45 LT  
D 0 30  
T 175 0  
L 350 0  
R 11 460 0

① (TE1) All of W 1/2 Sec 7  
T 9 S R 59 W  
R ch a d D Yo g  
Marjorie R Young JT

Temp y E m  
T C I Ch g



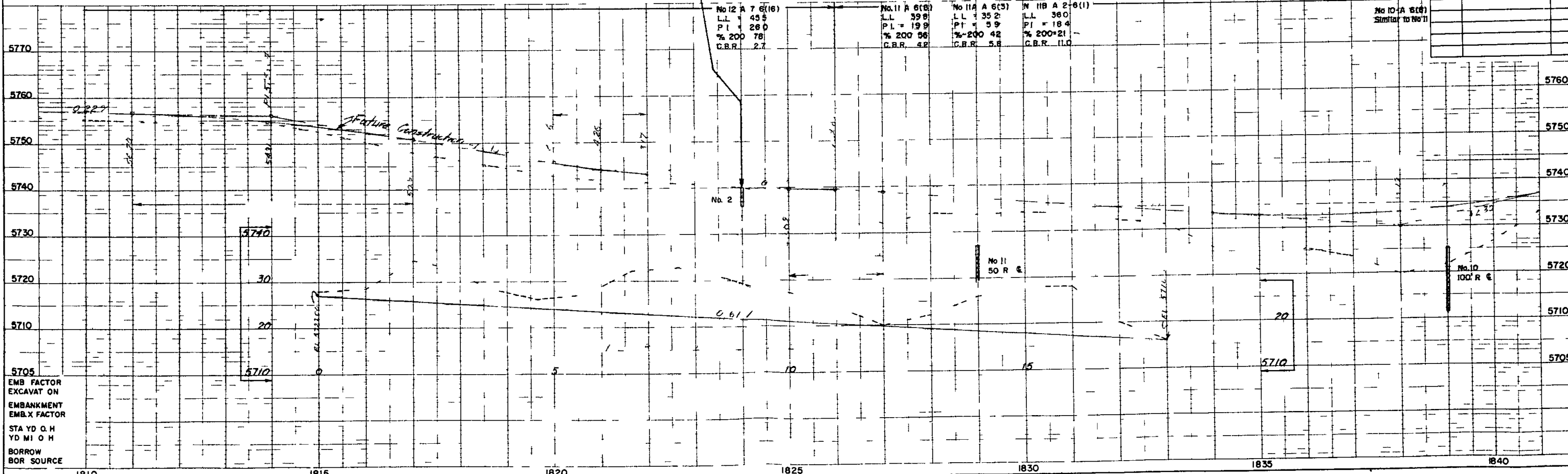
BEG R OW S0028(12)  
STA 1813+699

STA 1824+000 BEGIN S 0028(12)

| CONST      |         |            |
|------------|---------|------------|
| Ⓐ          | B       | Ⓒ          |
| Δ 1 45     | Δ 5 30  | Δ 5 30     |
| D 0 30     | D 11 1  | D 50 00    |
| T 175 0    | L 111 7 | L 11 0     |
| L 350 0    | R 4     | R 114 60   |
| R 11 460 0 | T 6 22  | T 60 2     |
|            |         | PC 12 P171 |
|            |         | PI 10 P6 5 |
|            |         | PI 13 42 0 |
|            |         | PT 17 9 71 |

② (TE2) All of Sec 18  
T 9 S R 59 W  
Gus Vass os  
Geo ge W Vass os JT

| REVISIONS |             |
|-----------|-------------|
| NO        | DESCRIPTION |
| 8-6       | 2           |



5705  
EMB FACTOR  
EXCAVAT ON  
EMBANKMENT  
EMB.X FACTOR  
STA YD O.H  
YD MI O.H  
BORROW  
BOR SOURCE

|  |   |  |  |
|--|---|--|--|
| No 12 A 7 6(16)<br>LL 455<br>PI 26 0<br>% 200 78<br>C.B.R. 2.7 | No 11 A 6(8)<br>LL 398<br>PI 19 9<br>% 200 86<br>C.B.R. 4.2 | No 11 A 6(3)<br>LL 352<br>PI 5 9<br>% 200 42<br>C.B.R. 5.8 | No 11 B A 2-6(1)<br>LL 380<br>PI 18 4<br>% 200 21<br>C.B.R. 11.0 |
|--|---|--|--|

No 10-A 6(8)  
Similar to No 11

2 ROW = 2 692 Ac



SW 1/4 SEC 8  
T 9 S R 59 W

④ All of Sec 8  
T 9 S R 59 W  
C G Wallace

|           |    |
|-----------|----|
| PR        | SH |
| 50020(12) | 5  |

RIGHT OF WAY  
EAST 1 KIOWA  
SE 1/4 SEC 8  
T 9 S R 59 W

| REVISIONS |  |
|-----------|--|
|           |  |
|           |  |
|           |  |
|           |  |

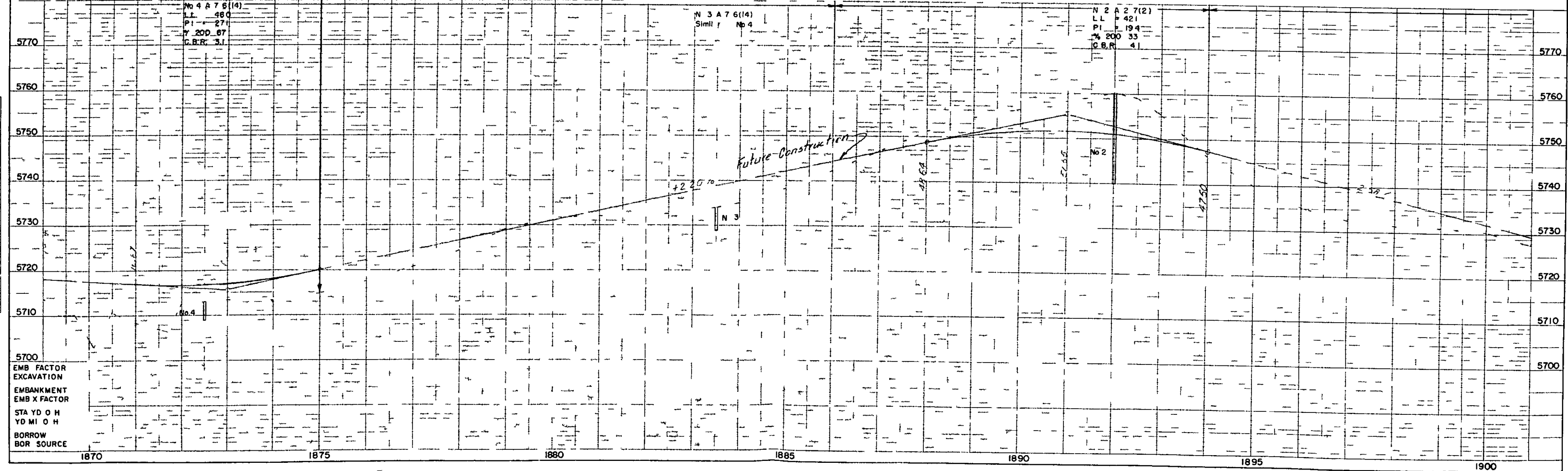
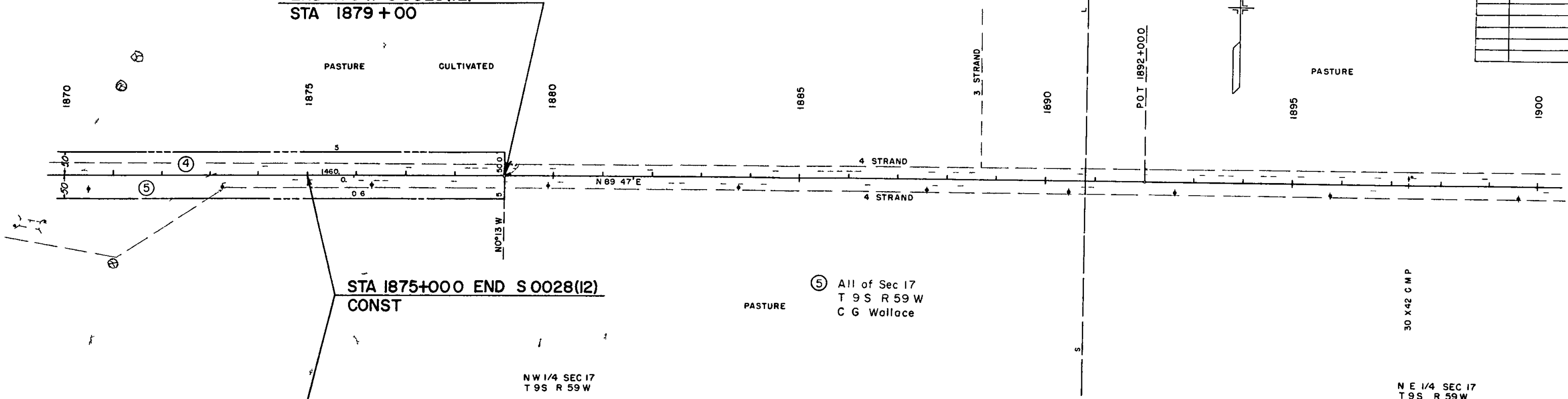
END ROW S0028(12)  
STA 1879+00

STA 1875+000 END S0028(12)  
CONST

NW 1/4 SEC 17  
T 9 S R 59 W

⑤ All of Sec 17  
T 9 S R 59 W  
C G Wallace

NE 1/4 SEC 17  
T 9 S R 59 W



EMB FACTOR  
EXCAVATION  
EMBANKMENT  
EMB X FACTOR  
STA YD O H  
YD MI O H  
BORROW  
BOR SOURCE

No 4 A 7 5 (14)  
L.L. 480  
P.I. 27  
Y 200 87  
C.B.R. 3.1

N 3 A 7 6 (14)  
Simil 7 No 4

N 2 A 2 7 (2)  
L.L. 421  
P.I. 194  
Y 200 33  
C.B.R. 4.1

Future Construction

+2.25%

No 2

1870 1875 1880 1885 1890 1895 1900

It is estimated that material for this project is available in the quantity of the following table. The following operations are shown below.

Alterations of the subbase PI to be carried will be allowed only on written permission from the Department.

QUANTITY & THICKNESS

| STATION                       | MATERIAL | QUANTITY & THICKNESS |             | OVERHAUL     |
|-------------------------------|----------|----------------------|-------------|--------------|
|                               |          | TONS                 | ON MILS     |              |
| Estimated for App'l Proj 1824 | P No 1   | 4                    | 41          | 132          |
| 1824 00 to 1831+00            | H.W.I    | 1                    | 064         | 2690         |
| 1835 470 to 1870 602          | 2" M     | 4                    | 2601        | 7700         |
| 1870 603 to 1878+020          | 1878+020 | 4                    | 007         | 1578         |
| Estimated for App'l Proj 1810 | K 1      |                      | 82          | 18           |
| From Structure Quantities     |          |                      | 94          | 242          |
| Est for Bridge Approaches     |          |                      | 212         | 639          |
| Est of C.B.L. for             |          |                      | 125         | 291          |
| Est for Crest Widening        |          |                      | 76          | 212          |
| Est for Irregular Subgrade    |          |                      | 496         | 1347         |
| <b>TOTALS</b>                 |          |                      | <b>5480</b> | <b>14870</b> |

\*Approx thickness this Project  
Ultimate thickness 10 each on C & C (6 future)

FENCING REQUIREMENTS

| STATION            | IDE | REMOVE      | ADD          | END       | FOR R & LINE |
|--------------------|-----|-------------|--------------|-----------|--------------|
|                    |     | LN FT       | LN FT        | EACH      | EACH         |
| 1314 00 to 1826+7  | R   | 1500        |              |           |              |
| 1826 10 to 1838 00 | E   | 190         |              |           |              |
| 1838+00 to 1879+00 | X   | 5           |              |           |              |
| 151 14 to 1839 06  | LT  | 4115        |              |           |              |
| 1843 70 to 1802 10 | PT  | 2876        |              |           |              |
| 167 00 to 1815 00  | R   | 2120        |              |           |              |
| 167 00 to 1815 00  | Rt  | 610         |              |           |              |
| 1814 06 to 1879+00 | LT  |             | 57           | 10        | 9            |
| 81 +74 to 1879 70  | R   |             | 6550         | 8         | 11           |
| <b>TOTALS</b>      |     | <b>1250</b> | <b>13765</b> | <b>18</b> | <b>20</b>    |

Estimated Gate will be put at the following locations: 1844 00 Lt, 1856 00 Rt, 1864 00 2 Lt & 2 Rt

DELINEATORS

| STATION             | SIDE | TYP I     | TYP II   |
|---------------------|------|-----------|----------|
| 1824 13             | Lt   | 1         |          |
| 1826 13             | Rt   |           | 1        |
| 1828 13             | Lt   |           |          |
| 1830 13             | R    | 1         |          |
| 1832 13             | Lt   | 1         |          |
| 1834+530 Bridge Spa | Rt   |           | 1        |
| 1835+470 Bridge Spa | Lt   |           | 1        |
| 1837 87             | Pt   | 1         |          |
| 1839 87             | Lt   | 1         |          |
| 1841 87             | Rt   | 1         |          |
| 1843 87             | L    | 1         |          |
| 1845 87             | Rt   | 1         |          |
| 1847 87             | Lt   | 1         |          |
| 1849 87             | Rt   | 1         |          |
| 1851 87             | R    | 1         |          |
| 1853 87             | Lt   | 1         |          |
| 1855+87             | L    |           |          |
| 1857+87             | Rt   | 1         |          |
| 1859 87             | Lt   | 1         |          |
| 1861 87             | Rt   | 1         |          |
| 1863+87             | Lt   | 1         |          |
| 1865+87             | L    |           |          |
| 1867 87             | Lt   | 1         |          |
| 1869 87             | Rt   | 1         |          |
| 1871 87             | L    |           |          |
| 1873 87             | Rt   |           |          |
| 1875 87             | L    | 1         |          |
| 1877+87             | Rt   |           |          |
| <b>TOTALS</b>       |      | <b>14</b> | <b>2</b> |

ROW MARKERS

| STATION      | IDE     | NO        |
|--------------|---------|-----------|
| 1817 00      | 1 & Rt  |           |
| 182 0        | 1 & Rt  |           |
| 184 00       | Lt & Rt | 2         |
| 185 197      | Lt & Rt | 2         |
| 1810 00 ? BK | Lt & Rt | 2         |
| 1810 00 3 AM |         |           |
| <b>TOTAL</b> |         | <b>10</b> |