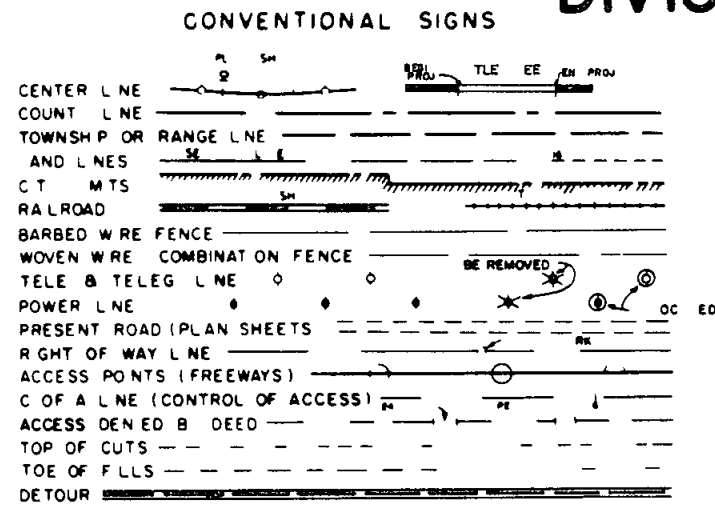


STATE DEPARTMENT OF HIGHWAYS DIVISION OF HIGHWAYS—STATE OF COLORADO

DC	S0028 (17)	NO
1	1	1
REVISIONS		

PLAN AND PROFILE OF PROPOSED FEDERAL AID PROJECT NO S0028(17) STATE HIGHWAY NO 86 ELBERT COUNTY

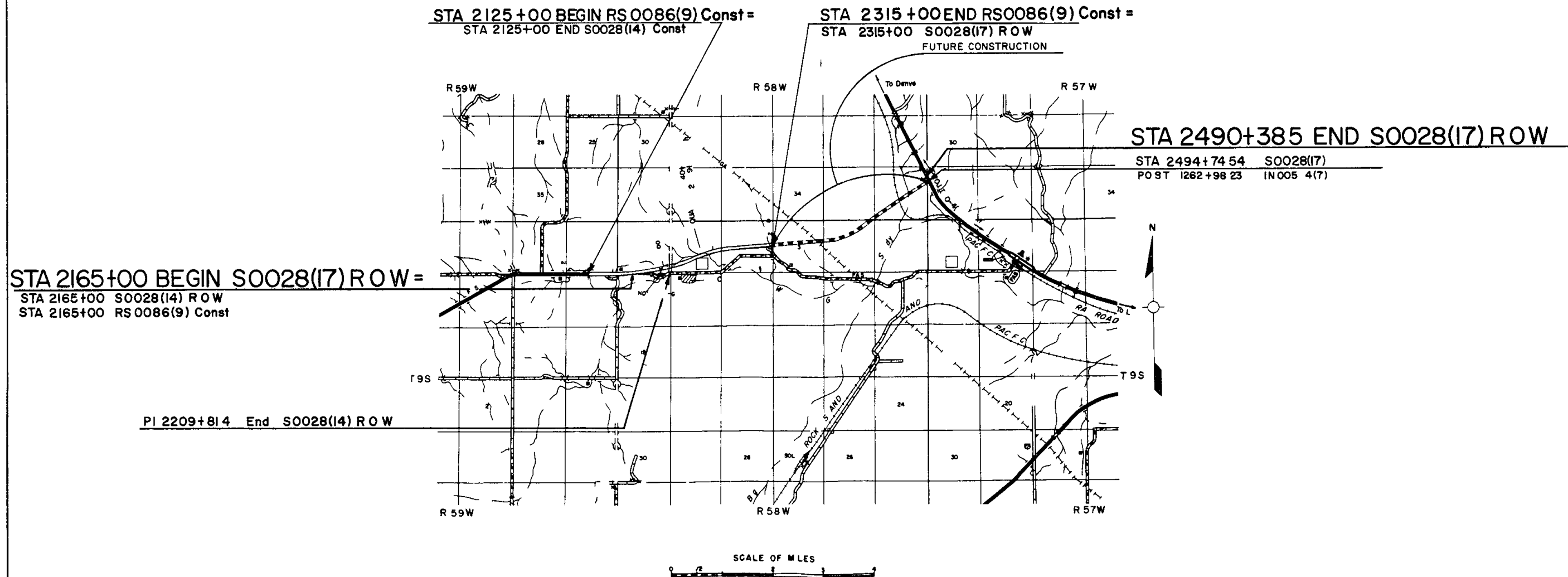


INDEX OF SHEETS

SHEET NO	DESCRIPTION
1	TITLE SHEET
2	TABULATION OF PROPERTIES
3 15	DETAIL SHEETS
16 19	OWNERSHIP MAPS

LENGTH OF PROJECT 6.183 miles (ROW)
RIGHT OF WAY
Information Obtained from Available County Records

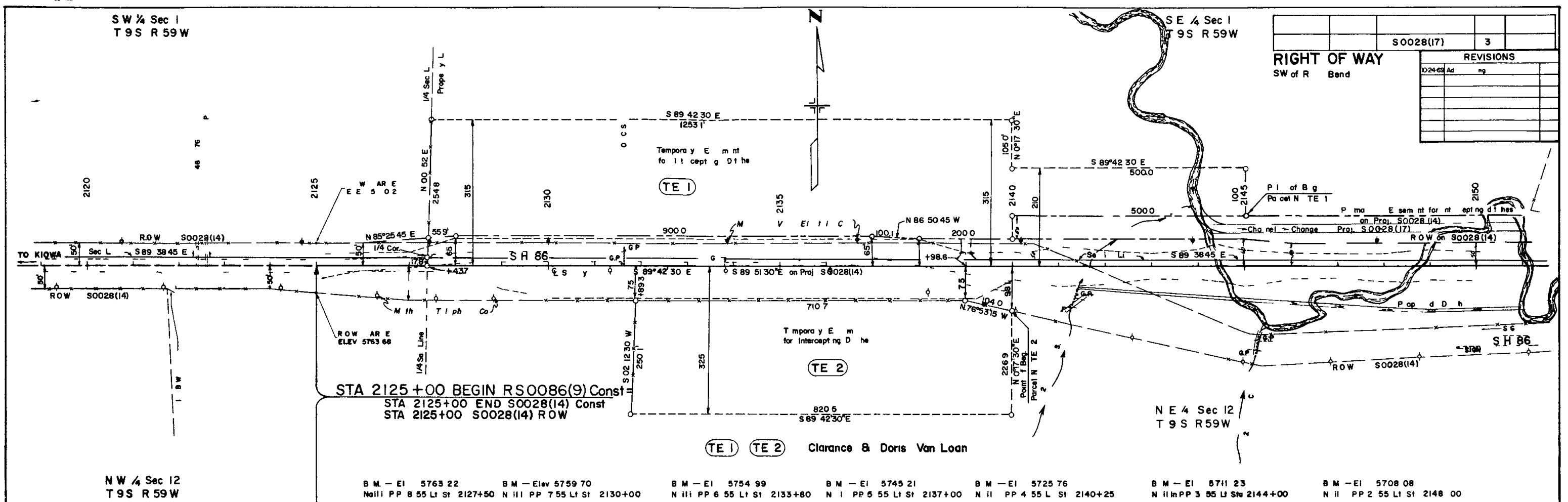
NOTE: This Project Calculated and Checked by Field Force



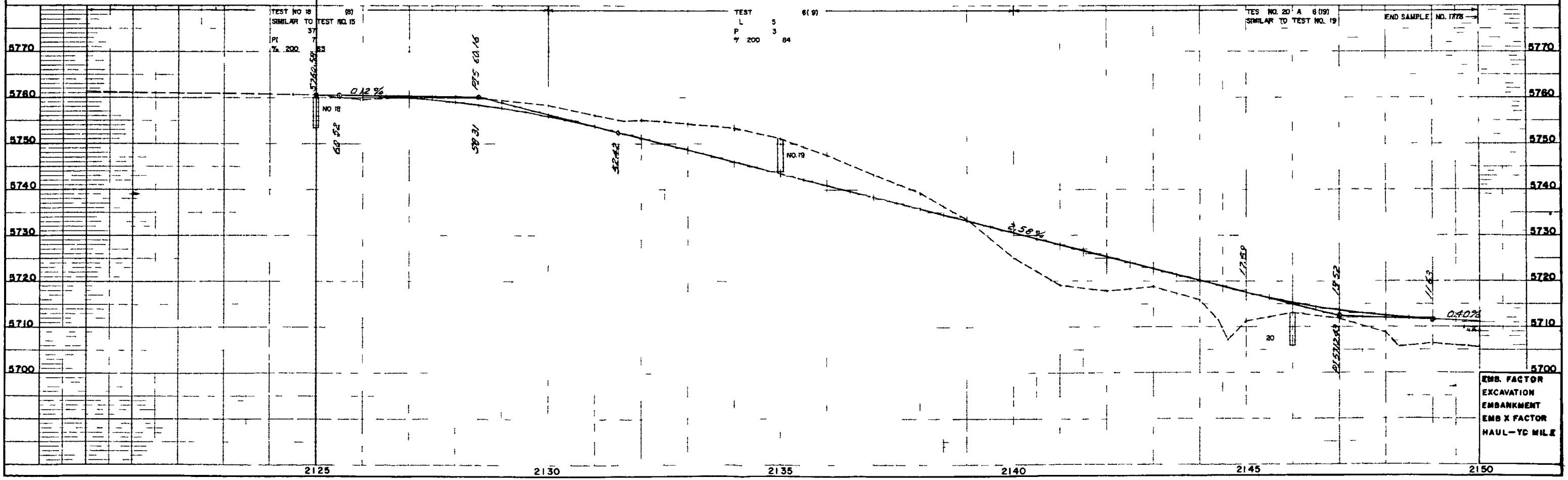
DEPARTMENT HIGHWAY CO RA
 TRANSPORTATION AS CONTRACTED 90028(14) 17
 SHEET NO. 17

PLAN
 SURVEYED
 NOTE BOOK
 NO.

PROFILE
 REVISION
 FILE TITLE
 DATE
 OF
 DRAWING
 REVISION



S0028(17)		3
RIGHT OF WAY		
SW of R Bend		
REVISIONS		
02468 Ad	ng	



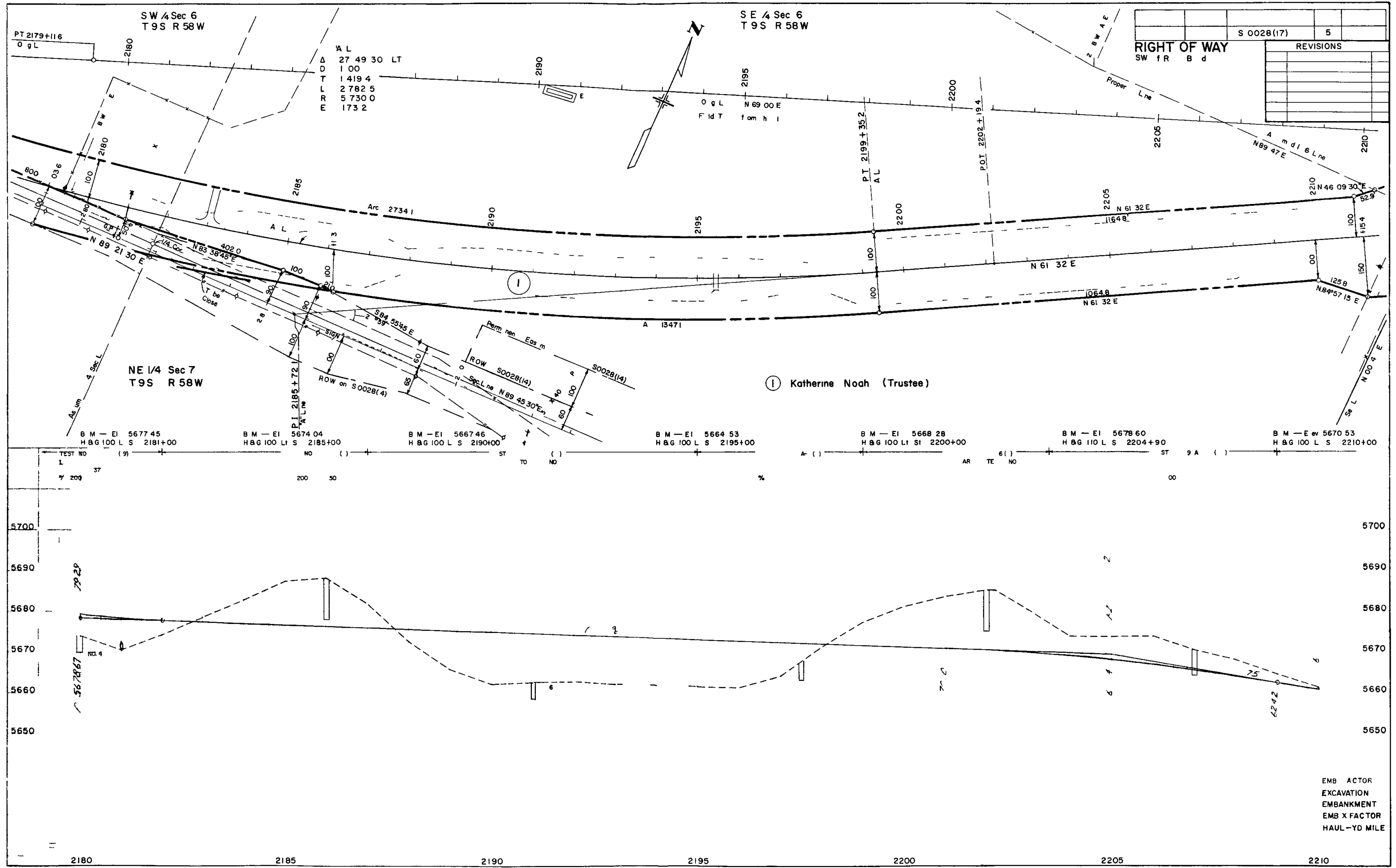
ME

Book # 3451 p 11 13
 Book # 26941 p 27 28 28
 Book # 3449 p 10

T pography

PLAN

PROFILE



S 0028(17)		5
RIGHT OF WAY SW f R B d		
REVISIONS		

EMB ACTOR
 EXCAVATION
 EMBANKMENT
 EMB X FACTOR
 HAUL-YD MILE

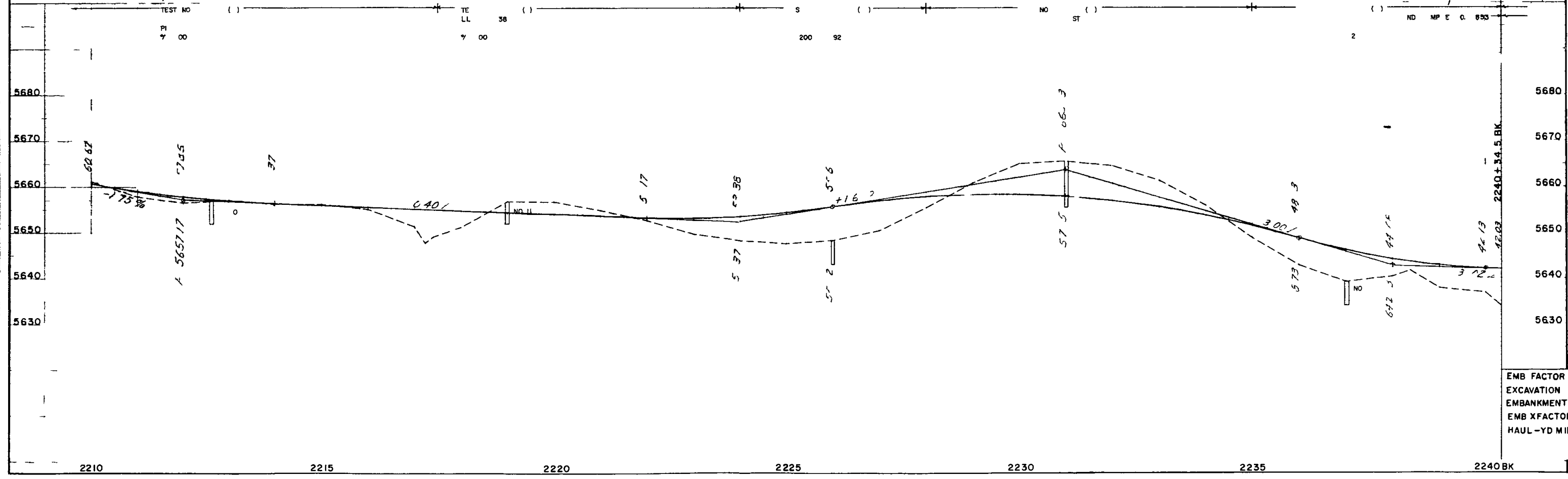
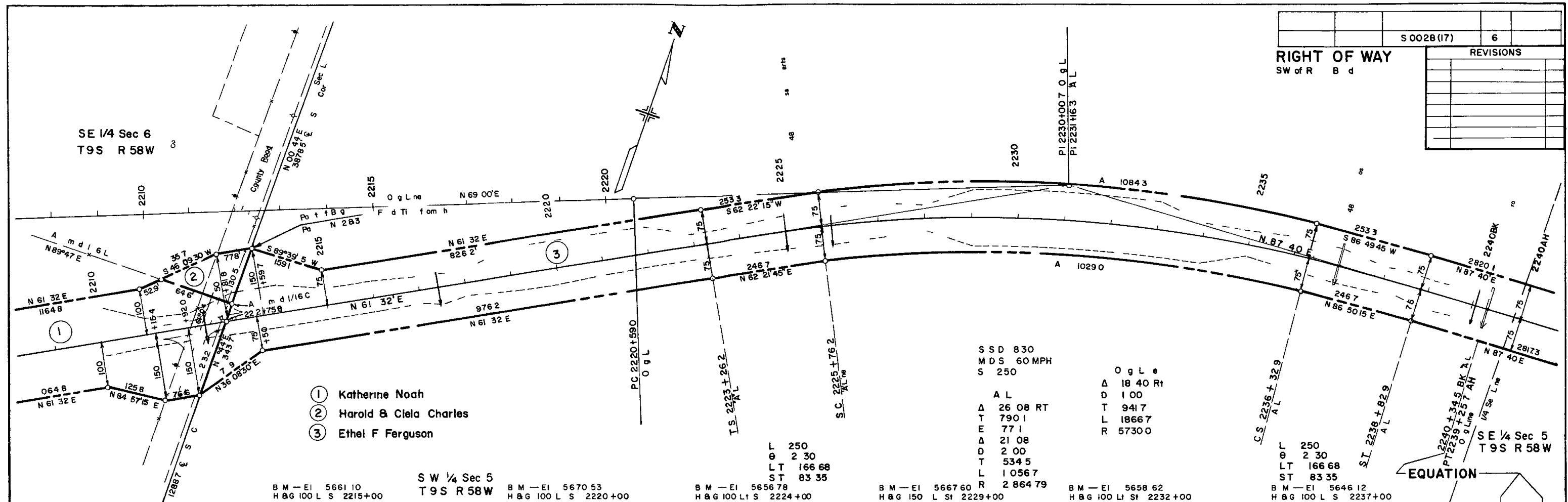
PLAN

PROFILE

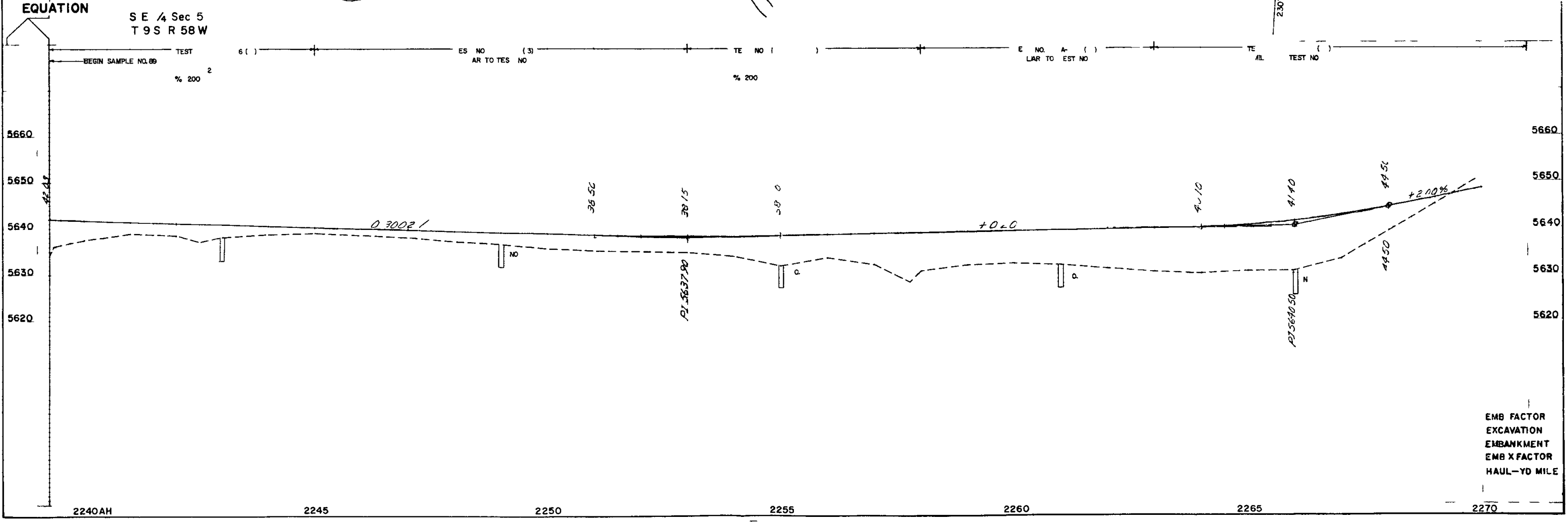
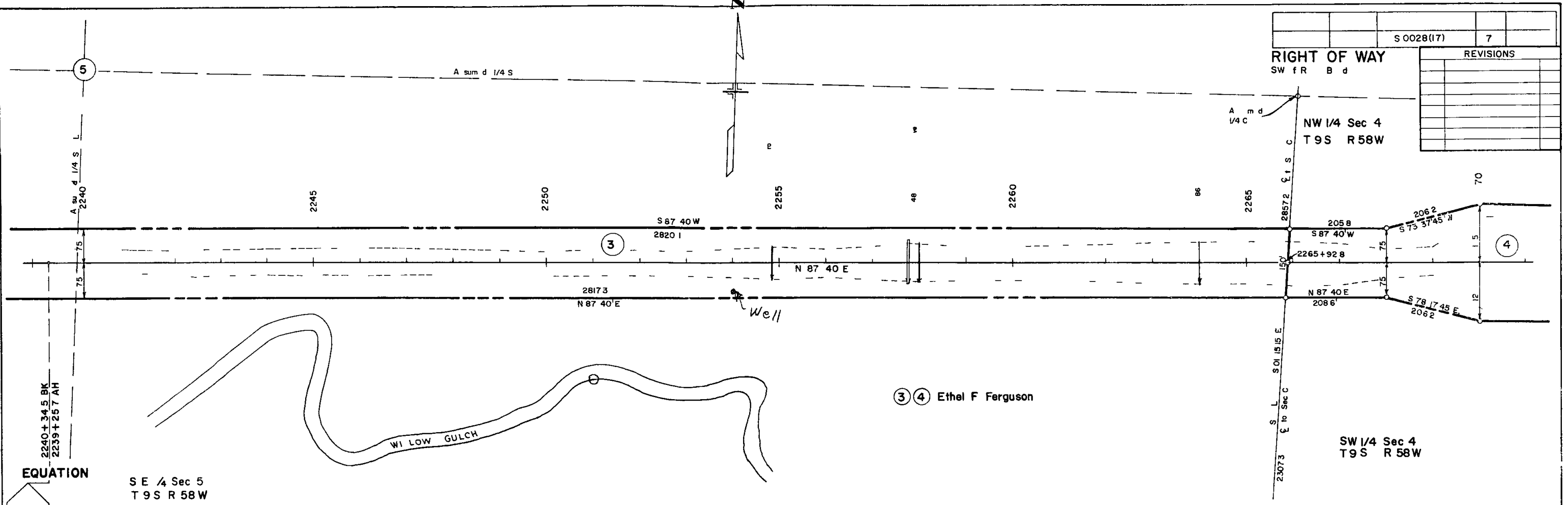
S 0028 (17)		6
-------------	--	---

RIGHT OF WAY
 SW of R B d

REVISIONS	



S 0028(17)		7
REVISIONS		

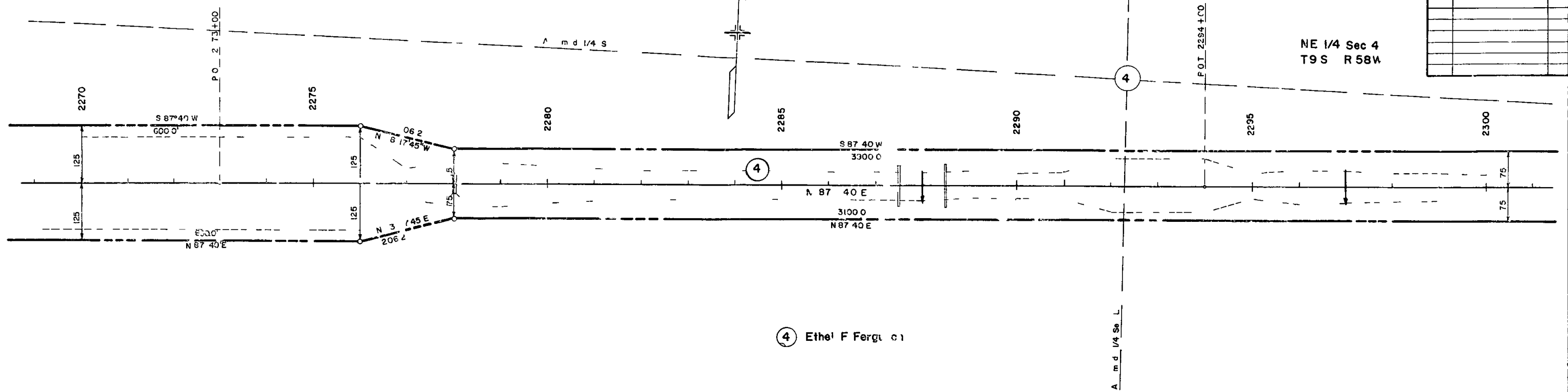


EMB FACTOR
 EXCAVATION
 EMBANKMENT
 EMB X FACTOR
 HAUL-YD MILE

Topography

NW 1/4 Sec 4
T9S R58W

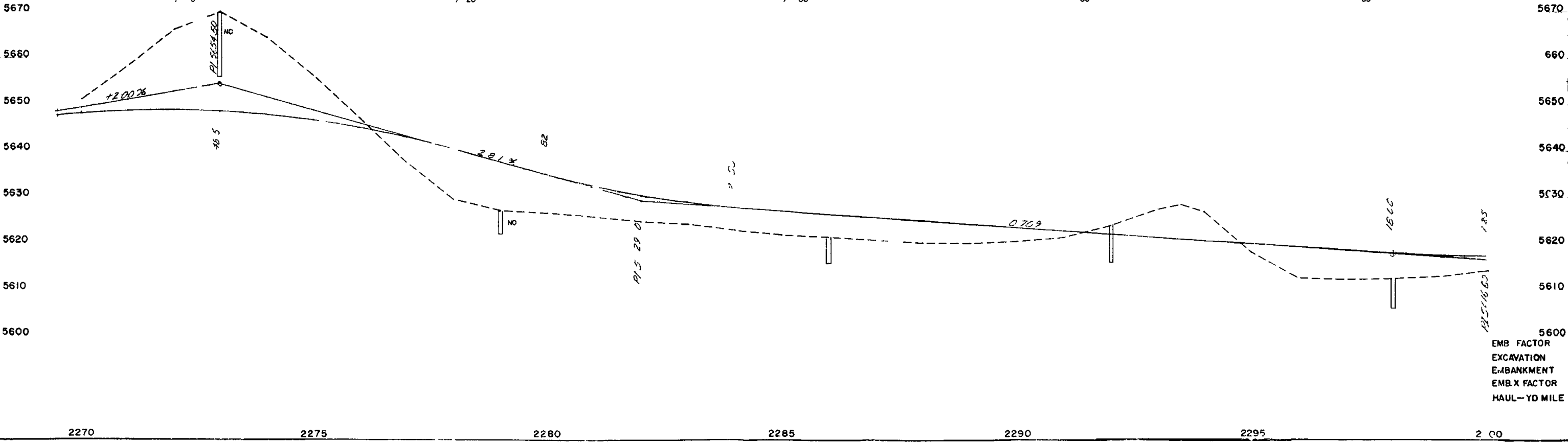
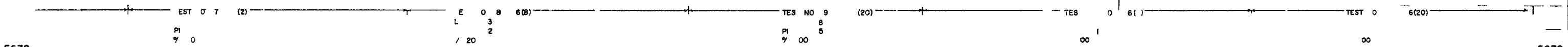
0028 (17)		8
RIGHT OF WAY		
SW of R Be d		
NE 1/4 Sec 4 T9S R58W		
REVISIONS		



④ Ethel F Ferguson

SW 1/4 Sec 4
T9S R58W

SE 1/4 Sec 4
T9S R58W



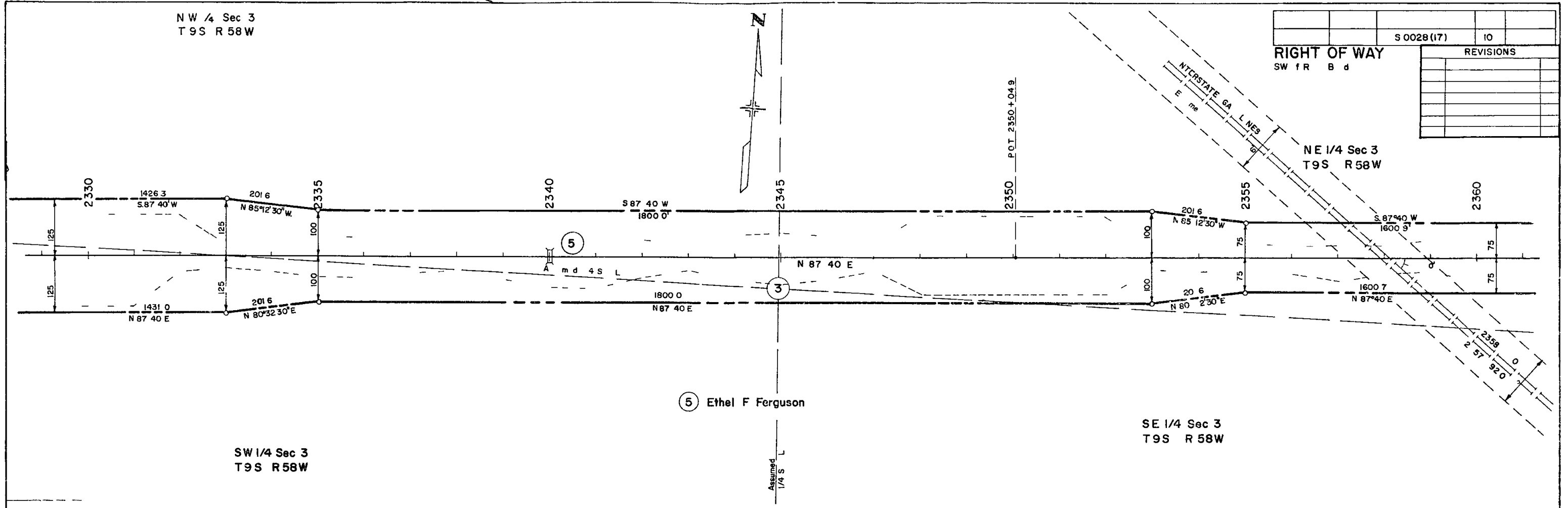
EMB FACTOR
EXCAVATION
EMBANKMENT
EMB X FACTOR
HAUL-YD MILE

TP n 800 # 34 1 P 15

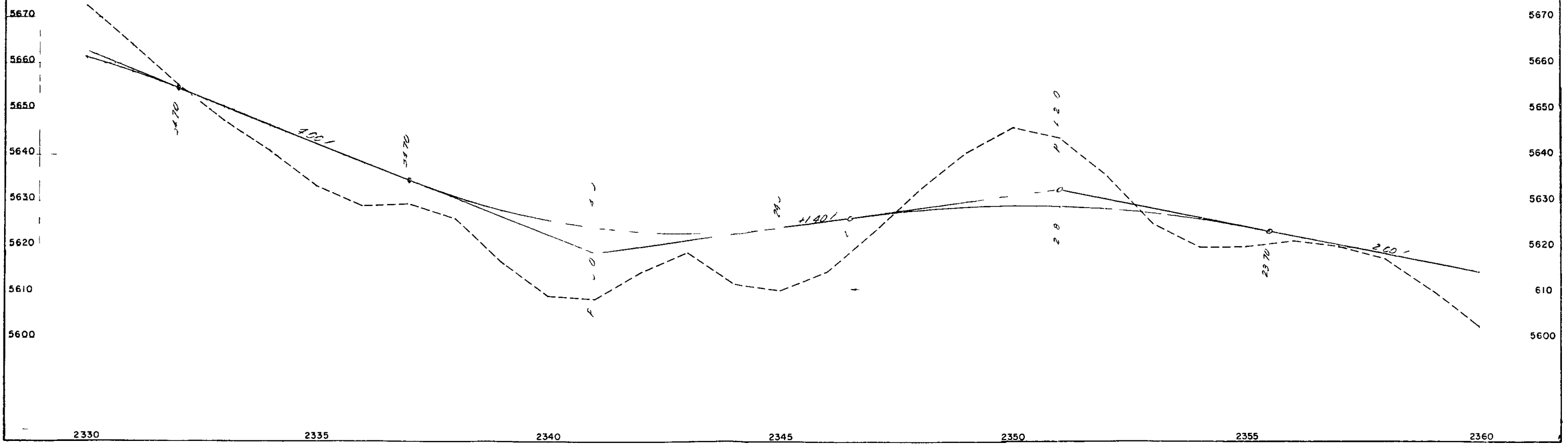
PLAN

NW 1/4 Sec 3
T9S R58W

S 0028 (17)		10
RIGHT OF WAY SW f R B d		
REVISIONS		



PROFILE



NW 1/4 Sec 2
T 9 S R 58 W

Δ 36 44 LT
T 1 076 4
E 154 8
Δ 31 44
D 2 00
T 814 3
L 1 586 7
R 2 864 79

L 250
θ 2 30
LT 166 68
ST 83 35

REVISIONS	

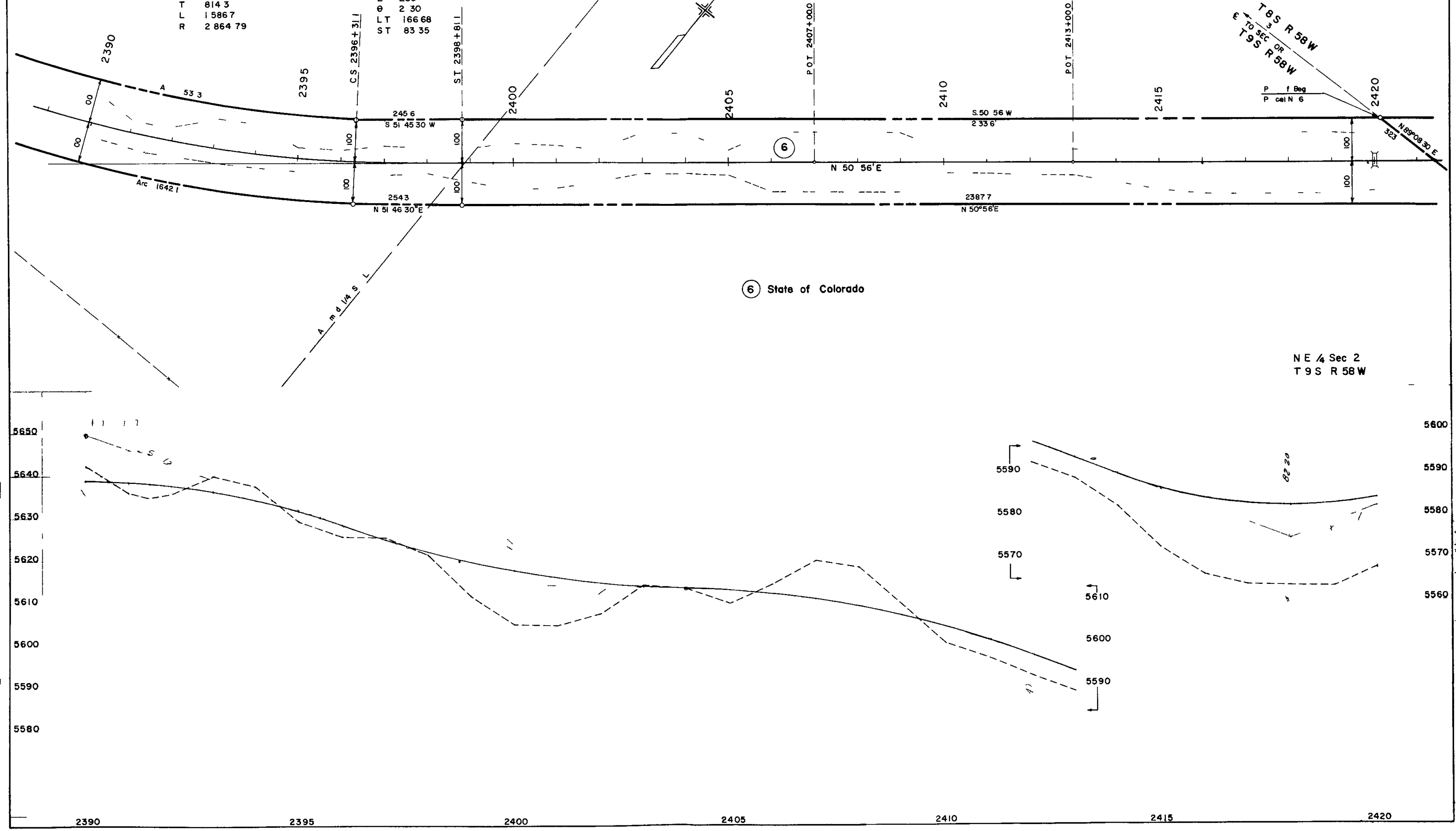
RIGHT OF WAY
SW of R e B d

T 8 S R 58 W
TO SEC OR
T 9 S R 58 W

P f Beg
P cell N 6

6 State of Colorado

NE 1/4 Sec 2
T 9 S R 58 W



prog. phy

PLAN

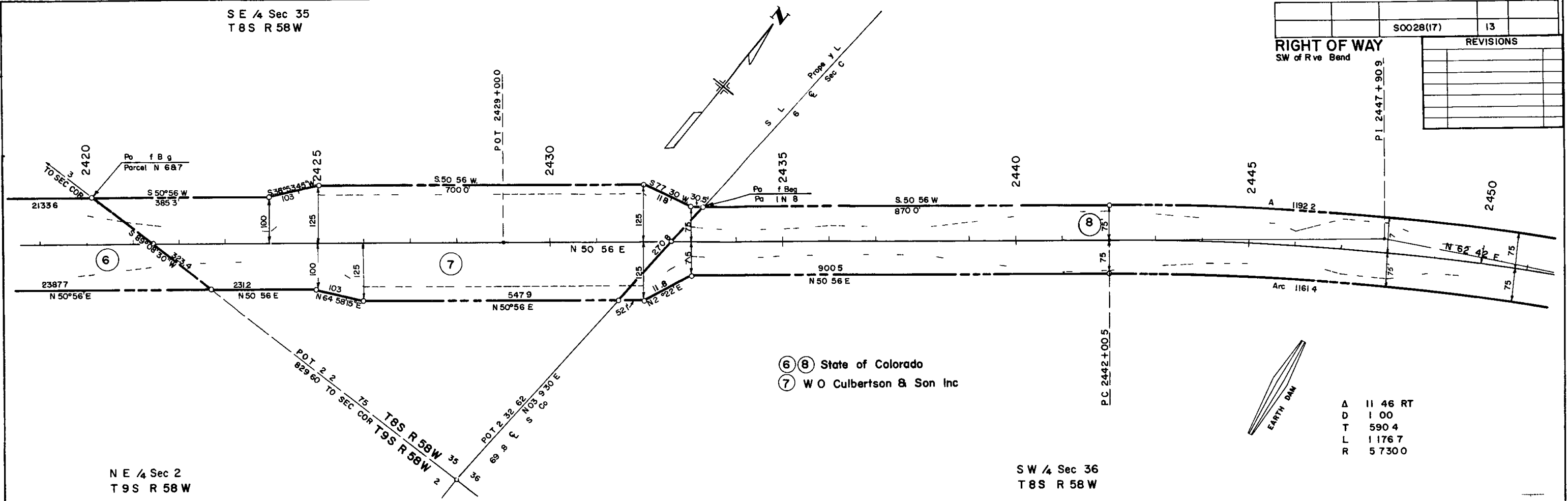
PRC I.E

SE 1/4 Sec 35
T8S R58W

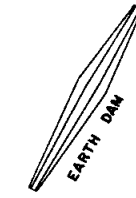
NE 1/4 Sec 2
T9S R58W

SW 1/4 Sec 36
T8S R58W

S0028(17)		13
RIGHT OF WAY SW of Rve Bend		
REVISIONS		



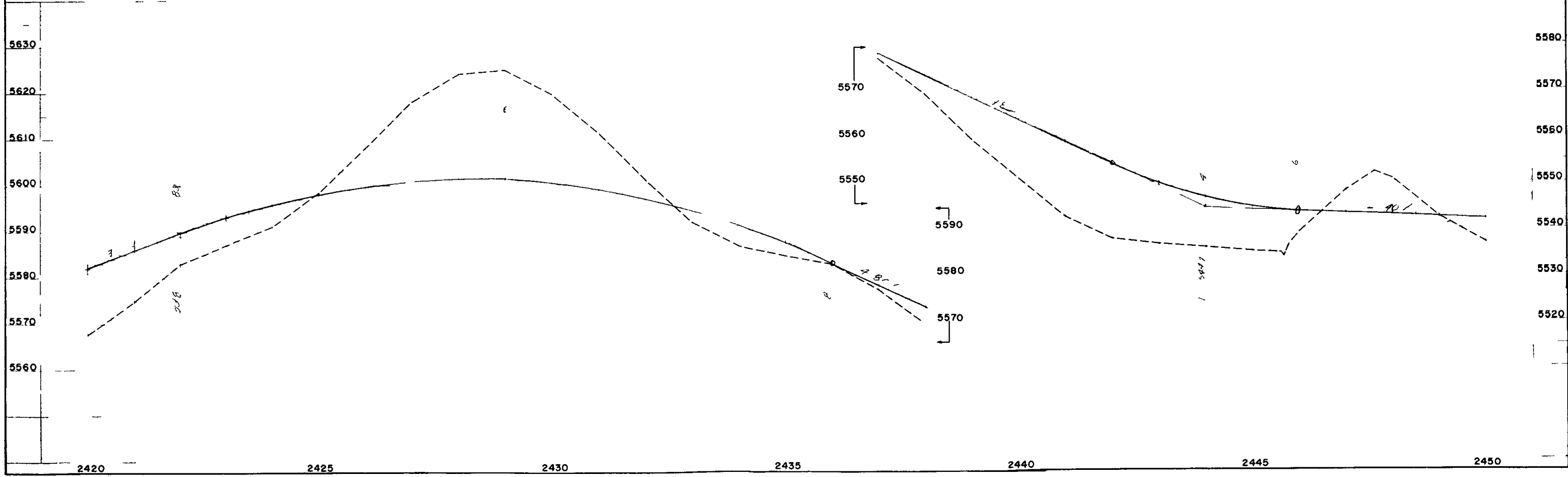
- ⑥ ⑧ State of Colorado
- ⑦ W O Culbertson & Son Inc



A 11 46 RT
D 1 00
T 590 4
L 1 176 7
R 5 730 0

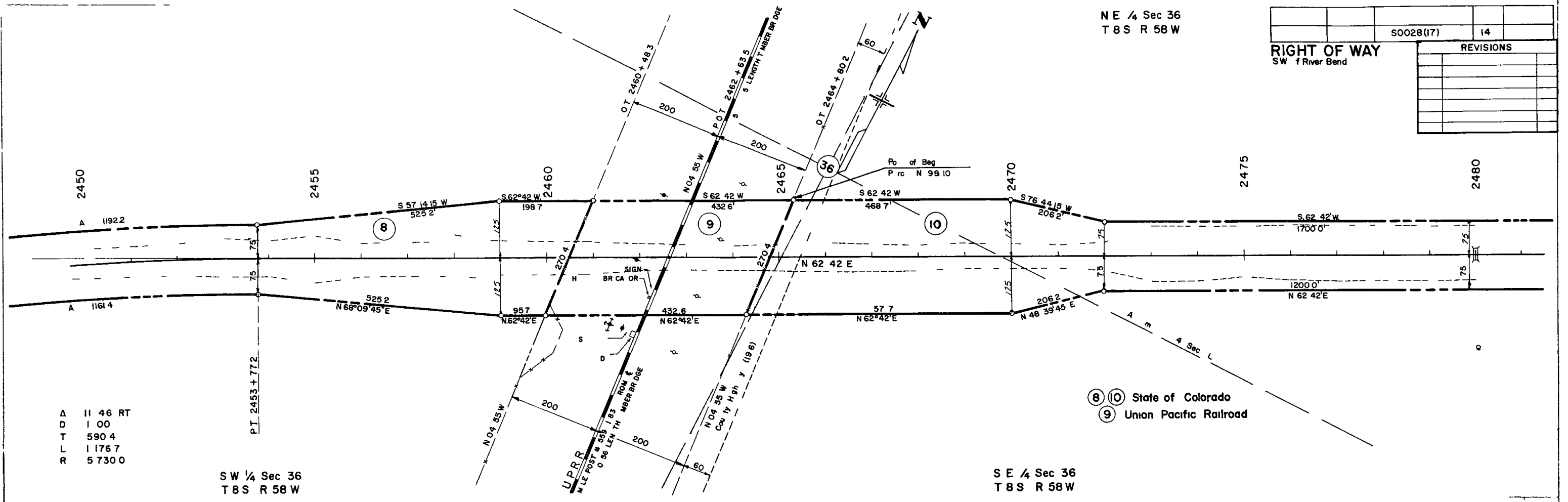
PLAN

PROFILE



NE 1/4 Sec 36
T 8 S R 58 W

0028(17)		14
RIGHT OF WAY SW 1/4 River Bend		
REVISIONS		



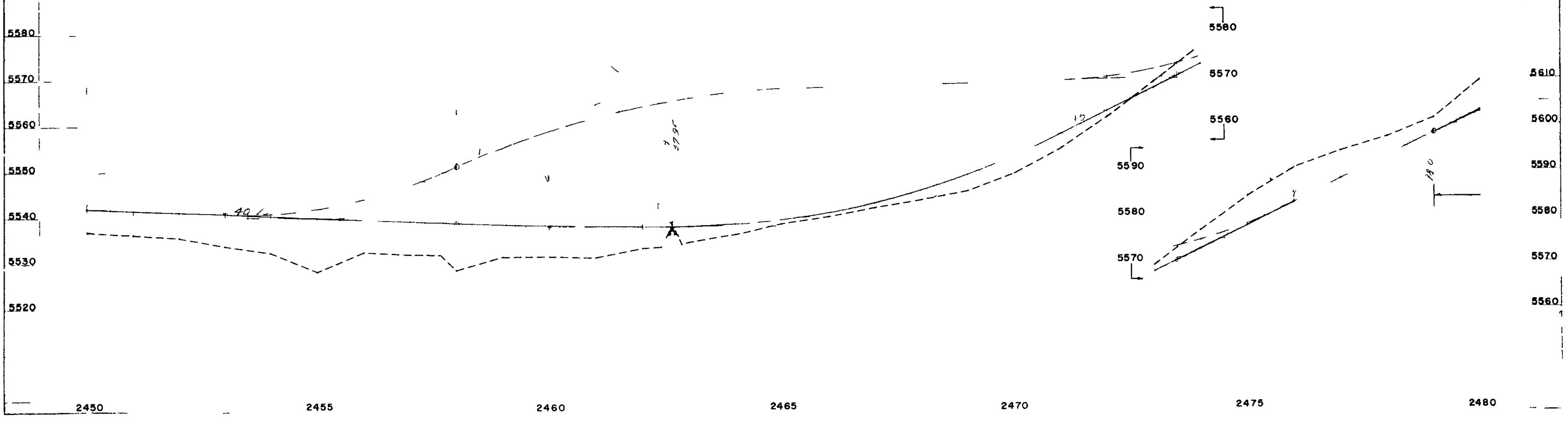
A 11 46 RT
 D 1 00
 T 590 4
 L 1 176 7
 R 5 730 0

SW 1/4 Sec 36
 T 8 S R 58 W

SE 1/4 Sec 36
 T 8 S R 58 W

8 10 State of Colorado
 9 Union Pacific Railroad

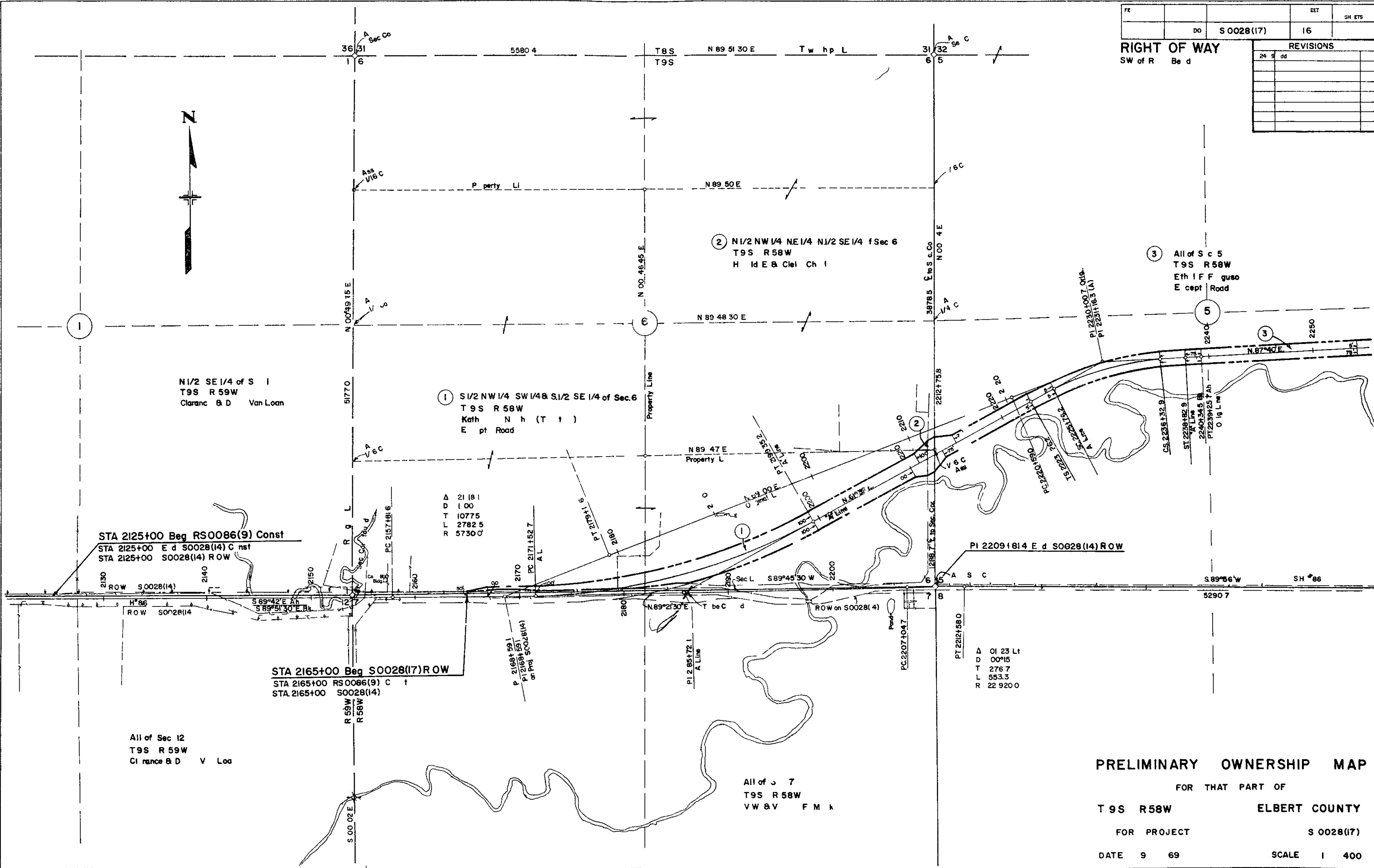
PROFILE



FE		EET	SH ETS
	DO	S 0028(17)	16

REVISIONS	
24	dd

RIGHT OF WAY
SW of R Be d



N 1/2 SE 1/4 of S 1
T9S R 59W
Claranc & D Van Loan

1 S 1/2 NW 1/4 SW 1/4 & S 1/2 SE 1/4 of Sec. 6
T9S R 58W
Kath N h (T t)
E pt Road

2 N 1/2 NW 1/4 NE 1/4 N 1/2 SE 1/4 of Sec 6
T9S R 58W
H Id E & Cl e l Ch 1

3 All of S c 5
T9S R 58W
Eth I F F guse
E cept Road

STA 2125+00 Beg RSO086(9) Const
STA 2125+00 E d S0028(14) C nst
STA 2125+00 S0028(14) ROW

STA 2165+00 Beg S0028(17) ROW
STA 2165+00 RSO086(9) C t
STA 2165+00 S0028(14)

All of Sec 12
T9S R 59W
Cl rance & D V Loo

All of S 7
T9S R 58W
VW & V F M k

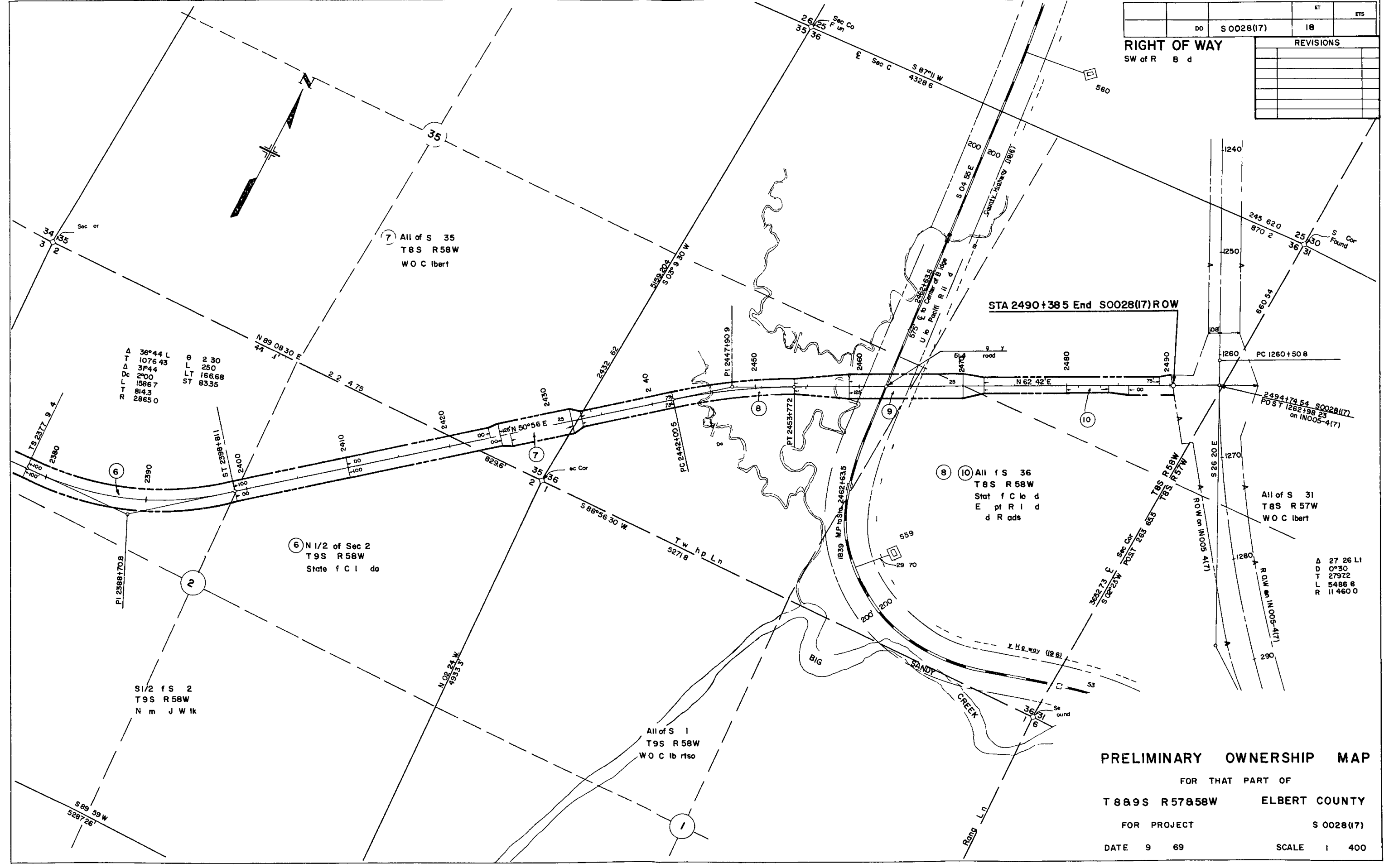
A 21181
D 100
T 10775
L 27825
R 57300

A 0123 L1
D 0015
T 2767
L 553.3
R 229200

PRELIMINARY OWNERSHIP MAP

FOR THAT PART OF
T 9 S R 58 W **ELBERT COUNTY**
FOR PROJECT **S 0028(17)**
DATE 9 69 SCALE 1 400

DO	S 0028(17)	18	ET	ETS
RIGHT OF WAY SW of R B d				
REVISIONS				



Δ 36°44' L
 T 1076.43
 Δ 37°44'
 DR 2700
 LT 1586.7
 LT 814.3
 R 2865.0
 θ 2.30
 L 250
 LT 166.68
 ST 83.35

S1/2 fs 2
 T9S R58W
 N m J W ik

7 All of S 35
 T8S R58W
 W O C lbert

6 N1/2 of Sec 2
 T9S R58W
 State f C I do

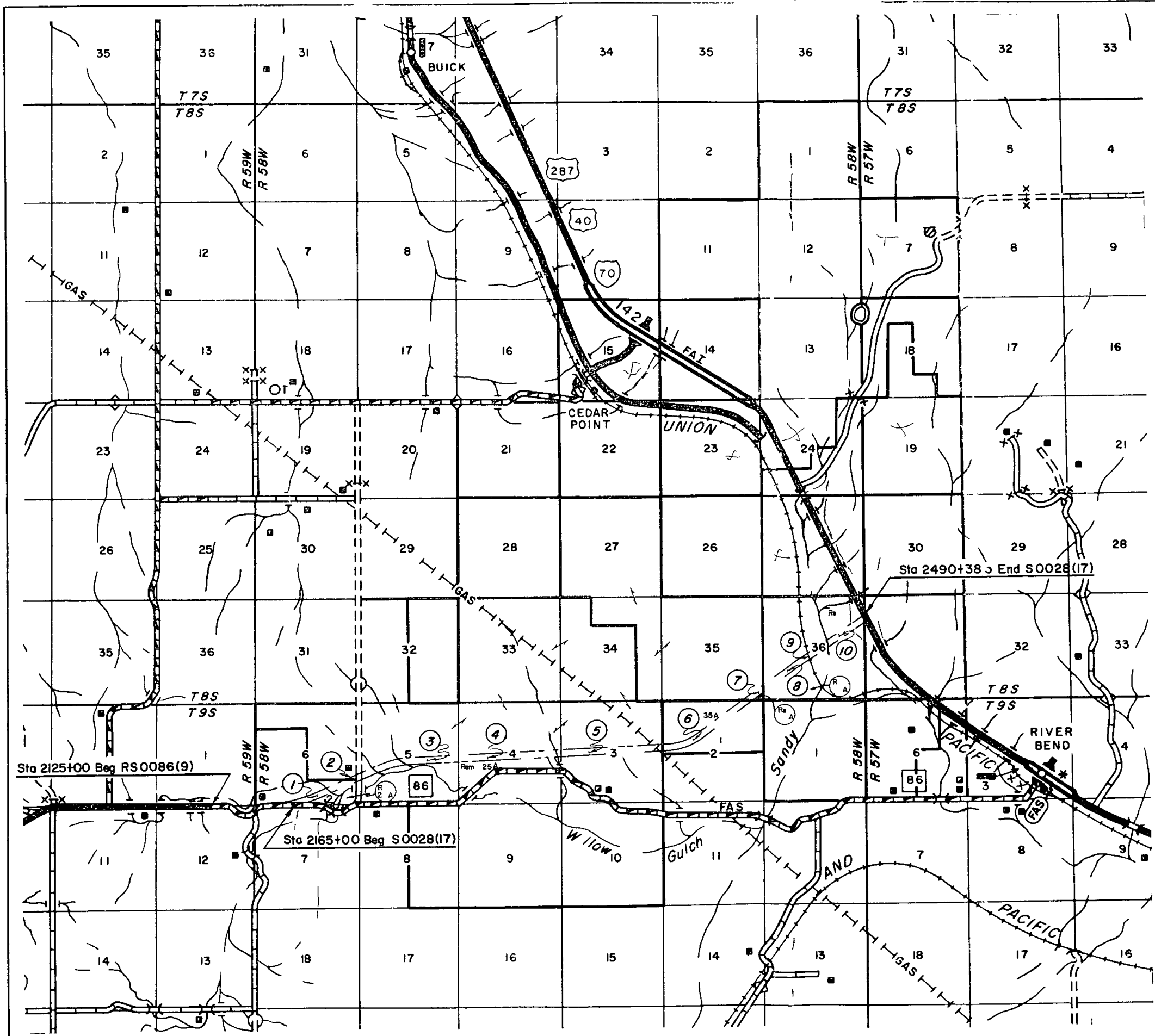
All of S 1
 T9S R58W
 W O C lbert so

8 10 All fs 36
 T8S R58W
 Stat f C lo d
 E pt R I d
 d R ads

All of S 31
 T8S R57W
 W O C lbert

Δ 27°26' Lt
 D 0°50'
 T 2797.2
 L 5488.6
 R 11460.0

PRELIMINARY OWNERSHIP MAP
 FOR THAT PART OF
T8&9S R57&58W ELBERT COUNTY
 FOR PROJECT **S 0028(17)**
 DATE 9 69 SCALE 1 400



S 0028(17)		ET	ET
RIGHT OF WAY		19	
SW f R e B d		REVISIONS	

- ① K h N h (T st)
T SW 1/4 S 1/2 f NW 1/4 a S 1/2 f SE 1/4 f S 6
T9S R 58W
- ② H E B C Ch 1
Th NE 1/4 N 1/2 f NW 1/4 a N 1/2 f SE 1/4 f Sec 6
T9S R 58W
- ③, 4, 5 E h F g
Th W 1/2 f Sec 32 S 33 SW 1/4 E 1/2 f SE 1/4
SW 1/4 f NE 1/4 S 1/2 NW 1/4 a NW 1/4 of NW 1/4 f S
34 T8S R 58W A 1 f S 34 5 9 a 10 h E 1/2 f
Sec 8 T9S R 58W
- ⑥, 8, 10 St t f Col d
All f Sec 30 t N 1/2 f N 1/2 S 1/2 f NE 1/4 N 1/2 f
SE 1/4 SE 1/4 of SE 1/4 W 1/2 f SW 1/4 a 1 SW 1/4 f
NW 1/4 f S 18 a th W 1/2 f Sec 32 T8S R 57W
A f S 36 T7S R 58W A 1 f S 10 14 16
22 26 28 a 36 h S 1/2 f S 4 th NW 1/4 W 1/2 f NE 1/4
NE 1/4 f NE 1/4 a h NW 1/4 f SW 1/4 f S 18 h SE 1/4
E 1/2 f NE 1/4 a h S 1/2 of SW 1/4 f S 24 T8S R 58W
All f S 16 a th N 1/2 of 2 T9S R 58W Th W 1/2
f Sec 36 T7S R 59W All of Sec 1 26 a 36 h
S 1/2 f S 14 T8S R 59W
- ⑦ W O C b t 8 S 1
All f Sec 7 9 a 3 1 a h SE 1/4 f NW 1/4 E 1/2 f
SW 1/4 a SW 1/4 f SE 1/4 Sec 19 T7S R 57W Th SE 1/4
BE 1/2 f NE 1/4 f Sec 6 T8S R 57W A 1 f S 11
12 13 15 2 23 25 27 a 35 a f NW 1/4 W 1/2 f NE 1/4 a
N 1/2 f SW 1/4 f S 24 h E 1/2 f E 1/2 NW 1/4 f
NE 1/4 a NE 1/4 f NW 1/4 f S 34 T8S R 58W A 1 f
S T9S R 58W
- ⑨ U P f R lro d
ROW 200' eod h d f C L
S 36 T8S R 58W



PRELIMINARY OWNERSHIP MAP
 FOR THAT PART OF
 ELBERT COUNTY
 FOR PROJECT S0028(17)
 DATE 9 25 69 SCALE 2 1/4"