

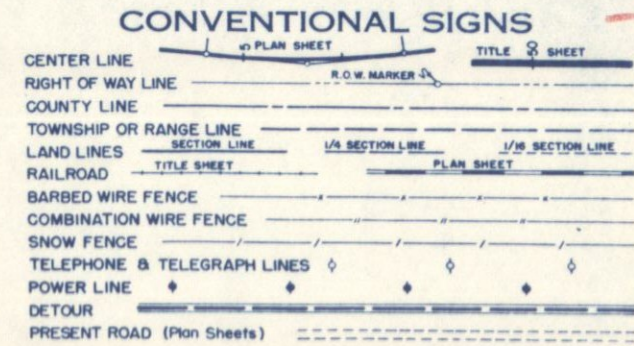
FEDERAL ROAD DIVISION NO.	DISTRICT	PROJ. NO.	SHEET NO.	TOTAL SHEETS
9	COLORADO	S0030(3)	1	

RIGHT OF WAY CS 15-0052-07

COLORADO DEPARTMENT OF HIGHWAYS

PLAN AND PROFILE OF PROPOSED FEDERAL AID PROJECT NO. S0030(3) STATE HIGHWAY NO. 52 WELD COUNTY

- INDEX OF SHEETS
- SHEET NO. 1 SKETCH MAP AND TITLE PAGE
 - 2 TABULATION OF PROPERTIES
 - 3-10 ALIGNMENT PLAN AND PROFILE
 - 11 OWNERSHIP MAP



SCALES OF ORIGINAL DRAWINGS

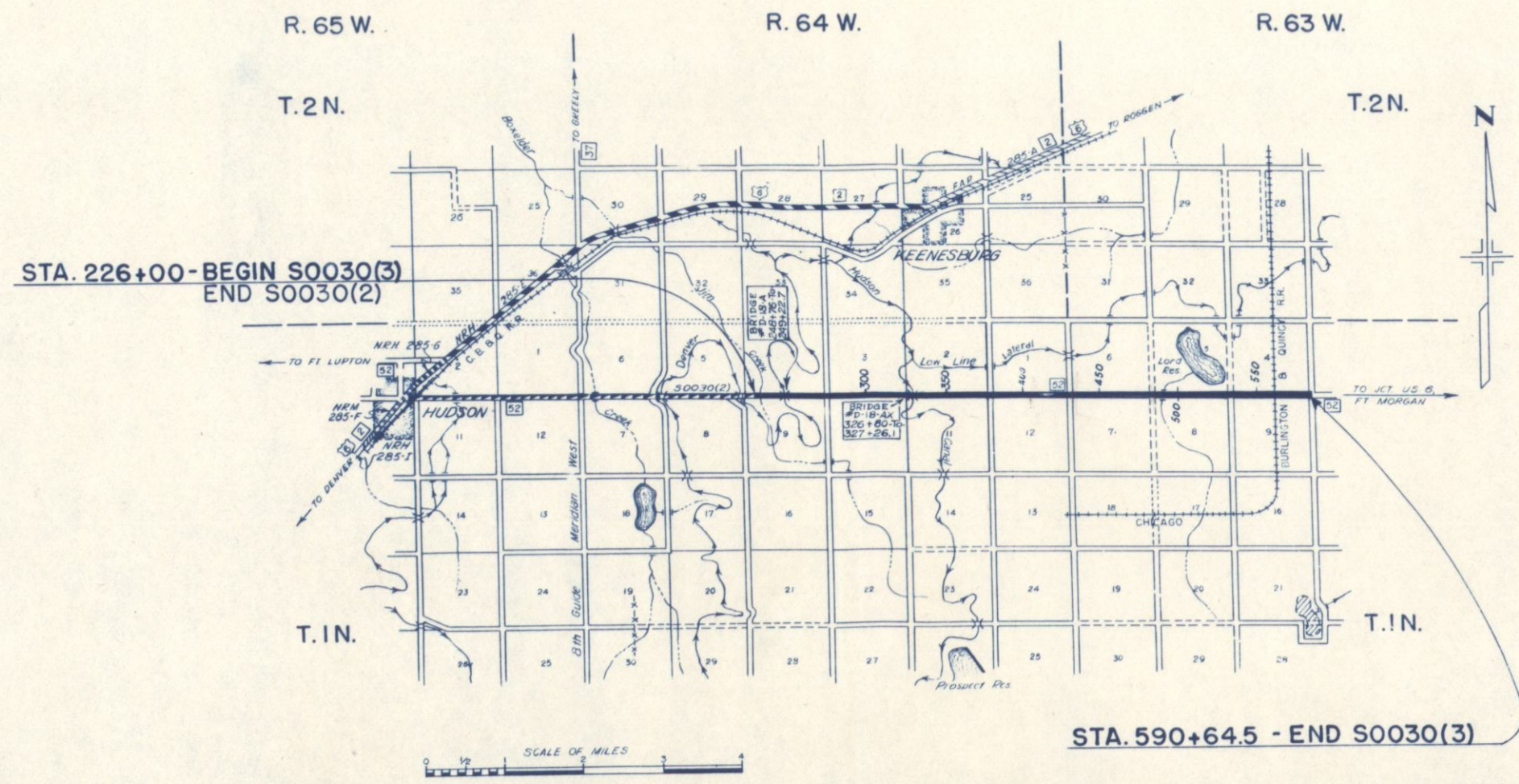
ON PLAN. 1 IN. = 100 FT.
ON PROFILE 1 IN. = 100 FT. HORIZONTAL
1 IN. = 10 FT. VERTICAL

GRADE LINE ON PROFILE IS SHOWN AS GRADE OF FINISHED ROAD (See Note on Sheet No. 3)

GROSS LENGTH OF PROJECT } 36,464.50 FT. = 6.906 MI.
NET LENGTH OF PROJECT }

RIGHT OF WAY

NOTE:
Refer to Project No. S 0030(2) for Right of Way Sta. 226+00 to 378+37.3.

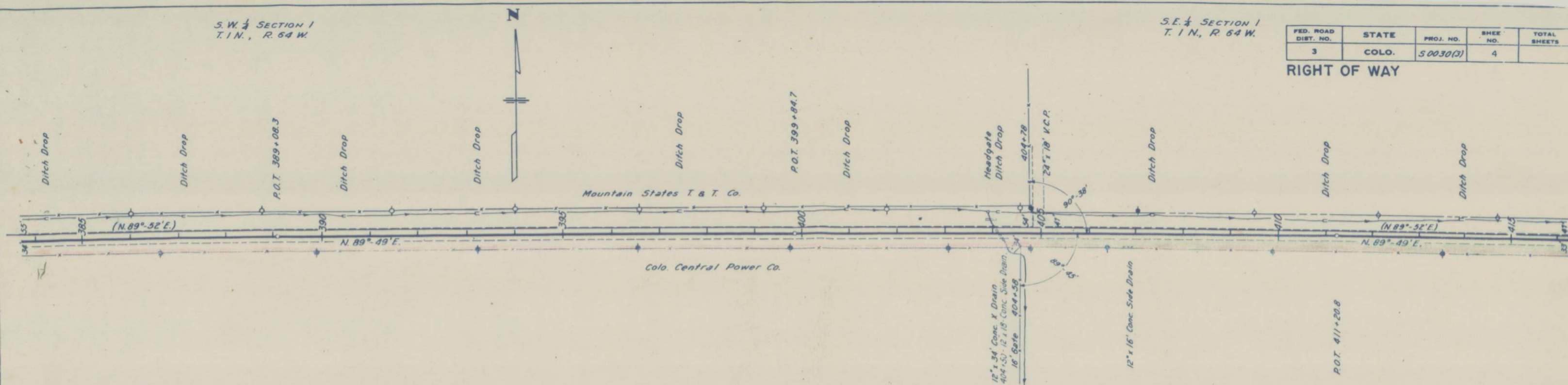


S.W. 1/4 SECTION 1
T. 1 N., R. 64 W.

S.E. 1/4 SECTION 1
T. 1 N., R. 64 W.

FED. ROAD DIST. NO.	STATE	PROJ. NO.	SHEET NO.	TOTAL SHEETS
3	COLO.	50030(3)	4	

RIGHT OF WAY



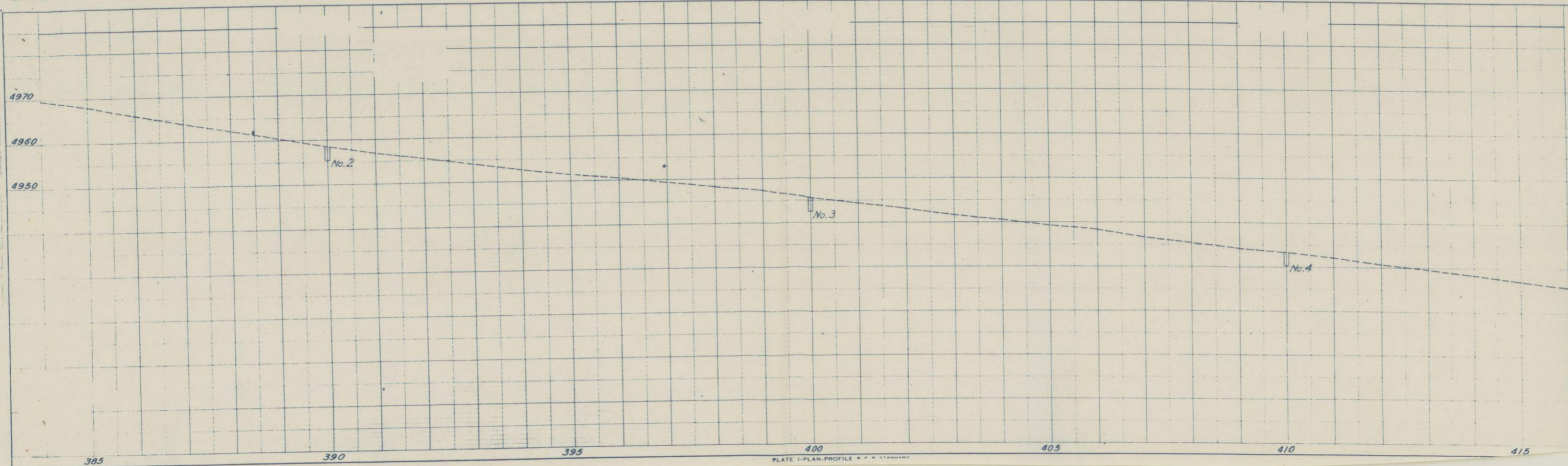
B.M. # 33 Spike in Tel. Pole
Lt. Sta. 388+70 4960.55

N.W. 1/4 SECTION 12
T. 1 N., R. 64 W.

B.M. # 34 Spike in Power Pole
Rt. Sta. 399+75 4944.87

B.M. # 35 Spike in Power Pole
Rt. Sta. 409+90 4931.84

NE 1/4 SECTION 12
T. 1 N., R. 64 W.



DATE 1-27-31
 BY L. D. DeWitt
 M. S. Thurnell E.L.M.
 SURVEYED
 PLATTED
 ALIGNED CHECKED
 RT. OF WAY CHECKED
 PLAN
 DATE BOOK
 NO.

DATE 1-27-31
 BY L. D. DeWitt
 M. S. Thurnell E.L.M.
 SURVEYED
 PLATTED
 GRADED CHECKED
 STRUCTURE NOTATIONS CHECKED
 PROFILE
 DATE BOOK
 NO.

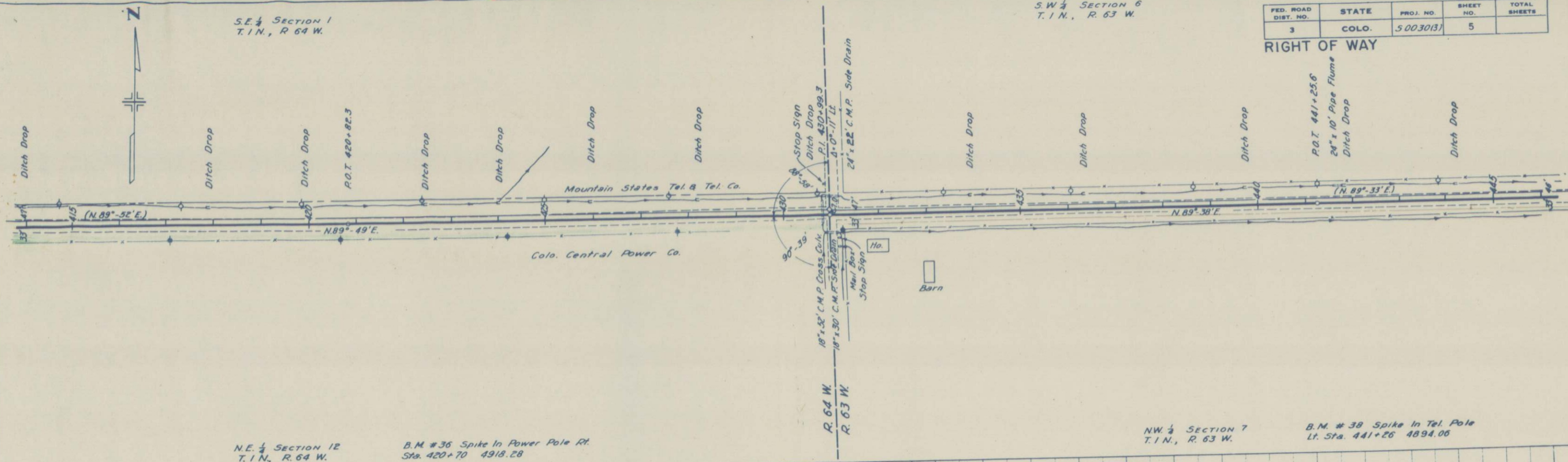


S.E. 1/4 SECTION 1
 T. 1 N., R. 64 W.

S.W. 1/4 SECTION 6
 T. 1 N., R. 63 W.

FED. ROAD DIST. NO.	STATE	PROJ. NO.	SHEET NO.	TOTAL SHEETS
3	COLO.	50030(3)	5	

RIGHT OF WAY

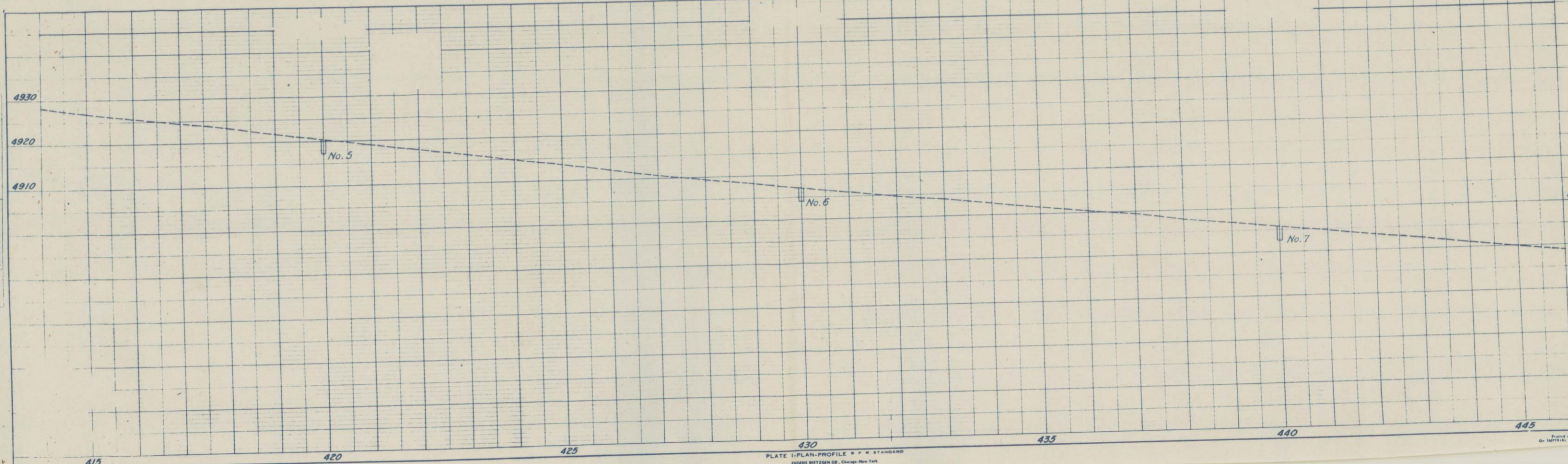


N.E. 1/4 SECTION 12
 T. 1 N., R. 64 W.

B.M. #36 Spike in Power Pole Rt.
 Sta. 420+70 4918.28

N.W. 1/4 SECTION 7
 T. 1 N., R. 63 W.

B.M. #38 Spike in Tel. Pole
 Lt. Sta. 441+26 4894.06

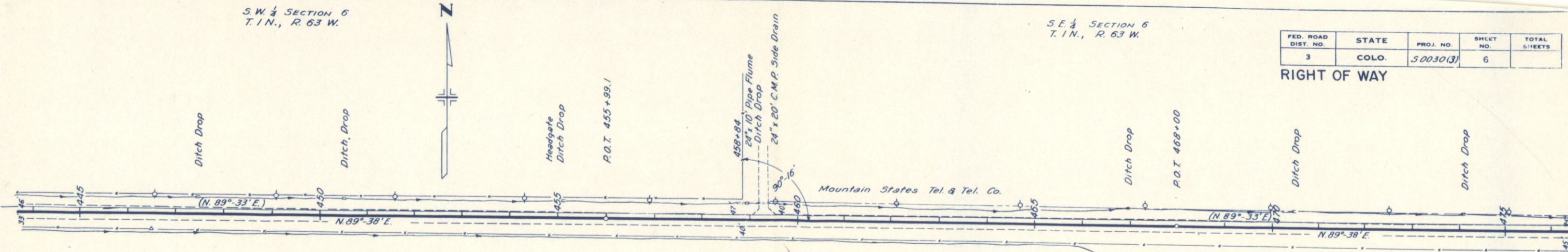


S.W. 1/4 SECTION 6
T. 1 N., R. 63 W.

S.E. 1/4 SECTION 6
T. 1 N., R. 63 W.

FED. ROAD DIST. NO.	STATE	PROJ. NO.	SHEET NO.	TOTAL SHEETS
3	COLO.	50030(3)	6	

RIGHT OF WAY



Sta. 446+40
U.S.G.S. B.M. 33' Pt.
Elev. 4887.835

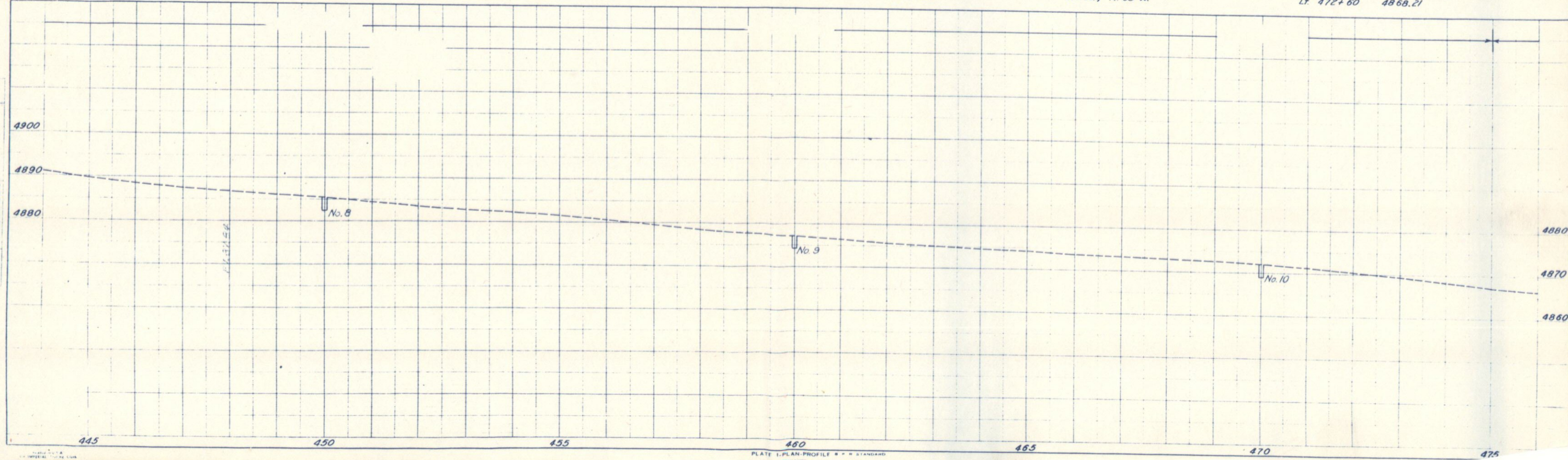
Mountain States Tel. & Tel. Co.

N.W. 1/4 SECTION 7
T. 1 N., R. 63 W.

B.M. #40 Spike in Tel. Pole
Lt. Sta. 462+10 4875.24

N.E. 1/4 SECTION 7
T. 1 N., R. 63 W.

B.M. #41 Spike in Tel. Pole
Lt. 472+60 4868.21



PLAN
DATE: 1-21-51
BY: H.L. Dieferich
M.P., Traced R.L.M. 1-51
CHECKED: [Signature]
DATE: [Signature]

PROFILE
DATE: 1-21-51
BY: H.L. Dieferich
M.P., Traced R.L.M. 1-51
CHECKED: [Signature]
DATE: [Signature]

S.W. 1/4 SECTION 5
T. 1 N., R. 63 W.

S.E. 1/4 SECTION 5
T. 1 N., R. 63 W.

FED. ROAD DIST. NO.	STATE	PROJ. NO.	SHEET NO.	TOTAL SHEETS
3	COLO.	500303	8	

RIGHT OF WAY

4 MERL E. DUNHAM &
RUBY L. DUNHAM
KEENESBURG, COLO.

5 THE HENRYLYN IRRIGATION DISTRICT
% RICHARD P. CULVERWELL
HUDSON, COLO.

1 CHARLEY BAUMGARTNER &
HERMAN BAUMGARTNER
KEENESBURG, COLO.

2 IRVIN J. SARGENT
ROGGEN, COLO.

3 THE HENRYLYN IRRIGATION DISTRICT
% RICHARD P. CULVERWELL
HUDSON, COLO.

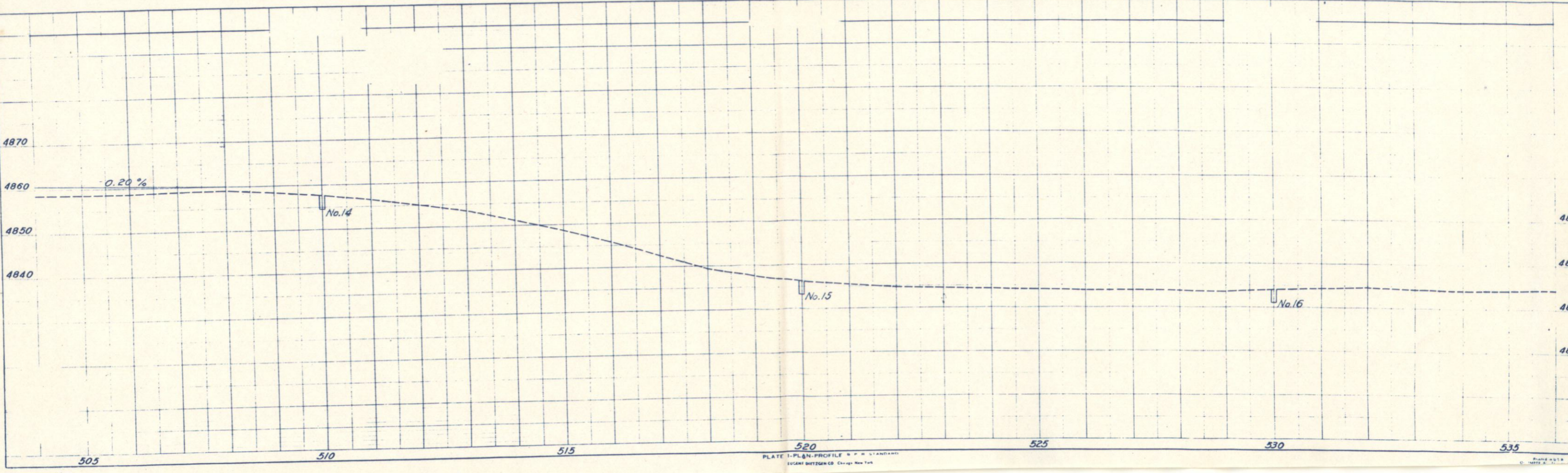
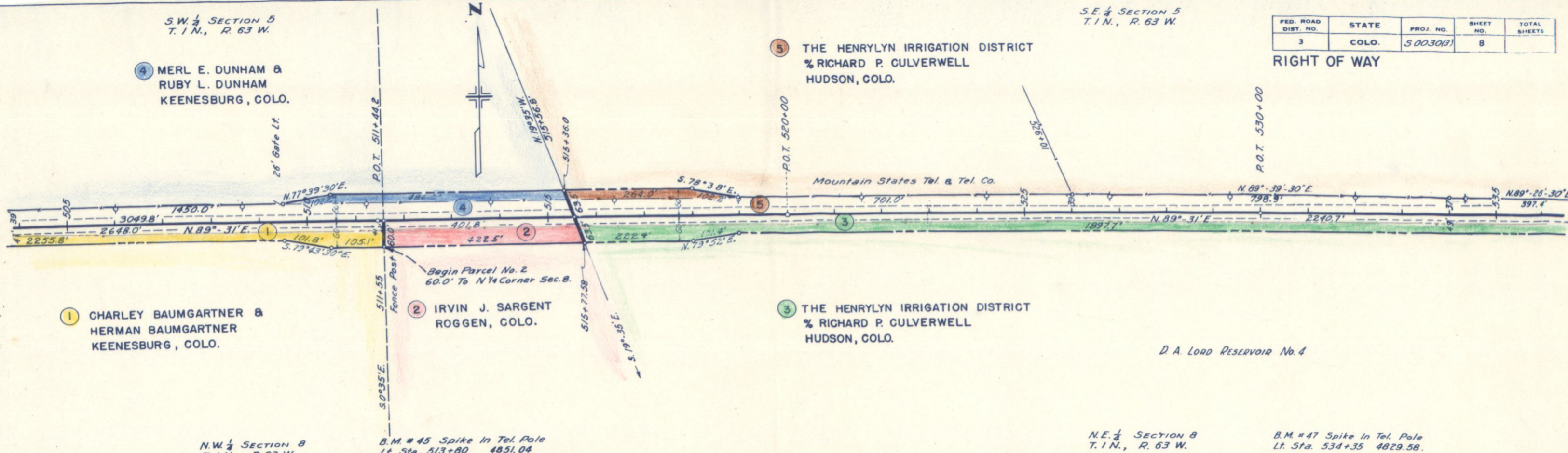
D A LORD RESERVOIR No. 4

N.W. 1/4 SECTION 8
T. 1 N., R. 63 W.

B.M. # 45 Spike In Tel. Pole
Lt. Sta. 513+80 4851.04

N.E. 1/4 SECTION 8
T. 1 N., R. 63 W.

B.M. # 47 Spike In Tel. Pole
Lt. Sta. 534+35 4829.58



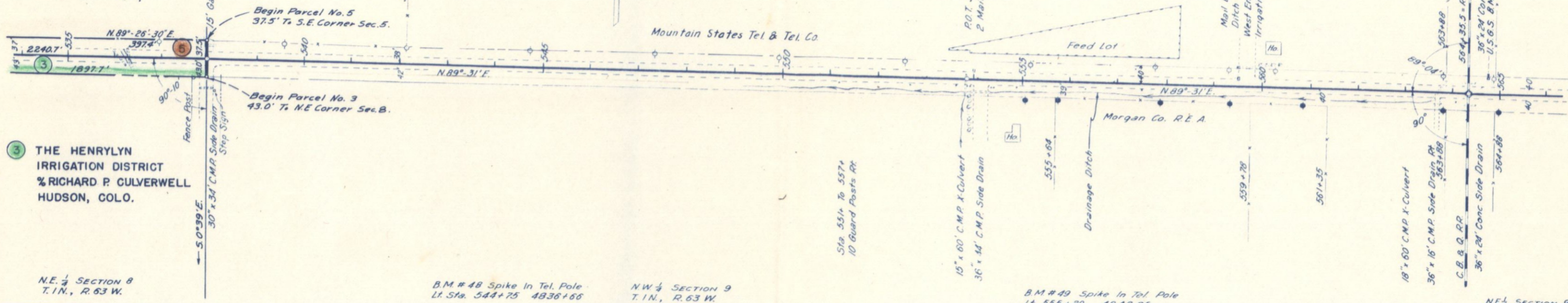
S.E. 1/4 SECTION 5
T.1N., R.63W.

S.W. 1/4 SECTION 4
T.1N., R.63W.

FED. ROAD DIST. NO.	STATE	PROJ. NO.	SHEET NO.	TOTAL SHEETS
3	COLO.	500303	9	

5 THE HENRYLYN IRRIGATION DISTRICT
% RICHARD P. CULVERWELL
HUDSON, COLO.

24" x 50' C.M.P. X-Culvert
36" x 40' C.M.P. X-Culvert



3 THE HENRYLYN IRRIGATION DISTRICT
% RICHARD P. CULVERWELL
HUDSON, COLO.

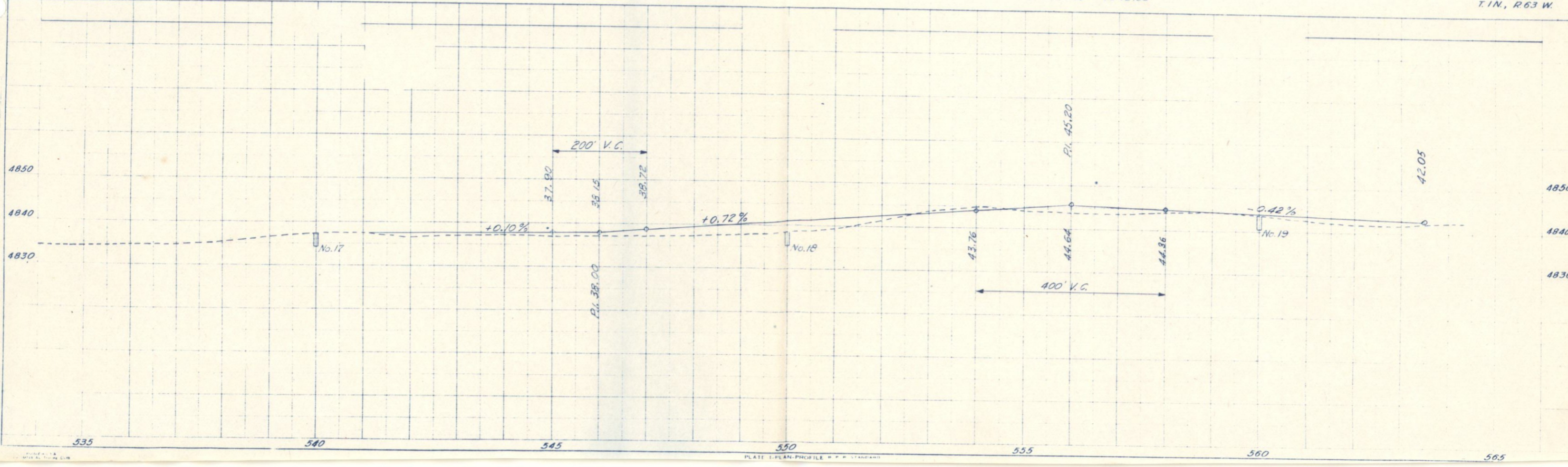
N.E. 1/4 SECTION 8
T.1N., R.63W.

B.M. #48 Spike In Tel. Pole
Lt. Sta. 544+75 4836+66

N.W. 1/4 SECTION 9
T.1N., R.63W.

B.M. #49 Spike In Tel. Pole
Lt. Sta. 555+20 4842.95

N.E. 1/4 SECTION 9
T.1N., R.63W.



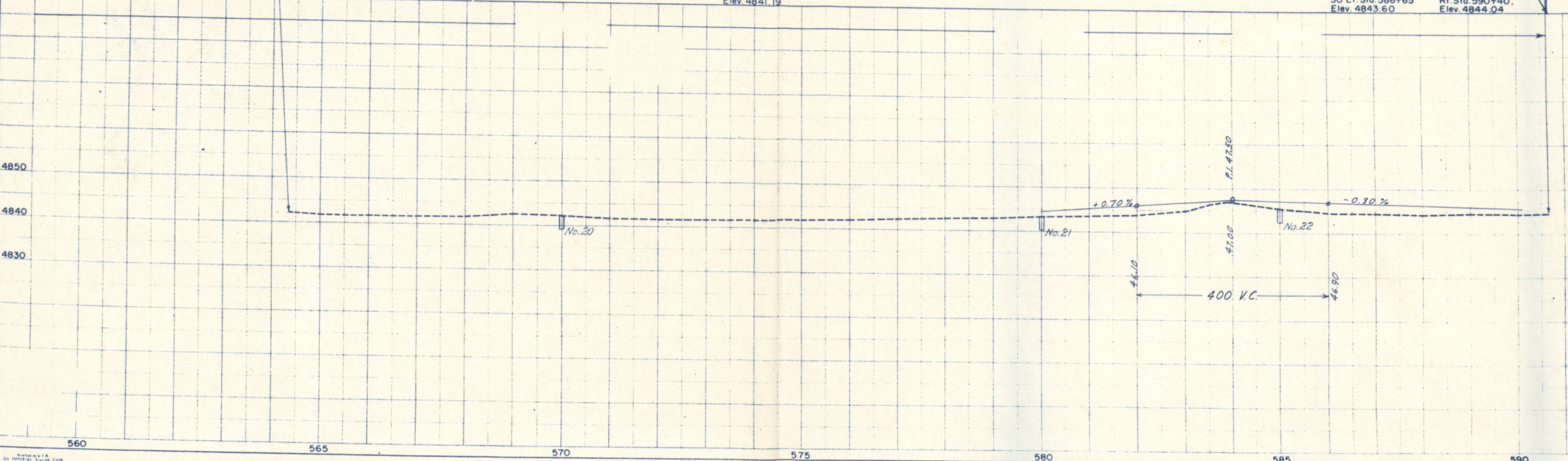
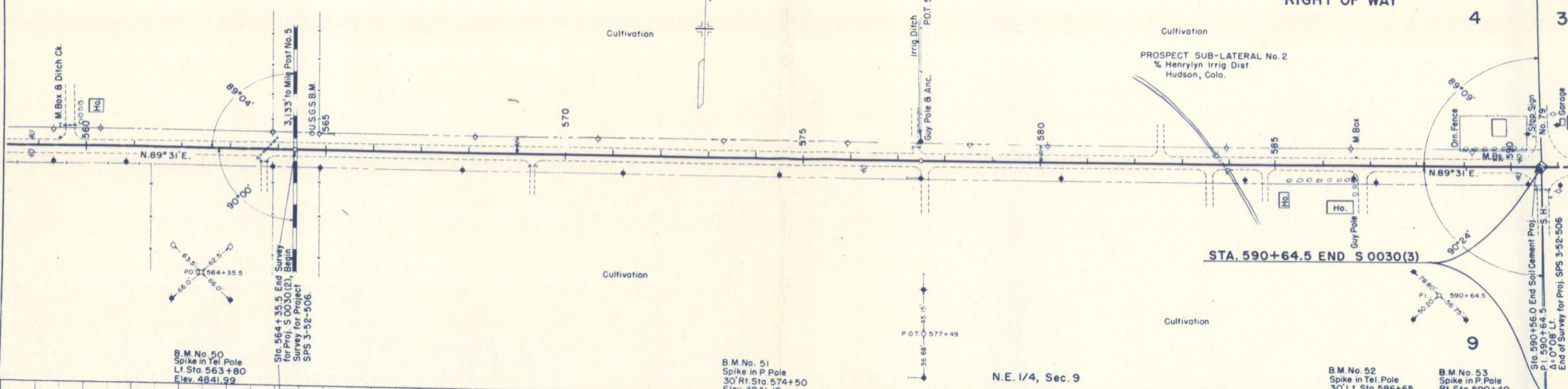
S.E. 1/4, Sec. 4
T. 1 N., R. 63 W.

FED. ROAD DIST. NO.	STATE	PROJ. NO.	SHEET NO.	TOTAL SHEETS
3	COLO.	S0030(3)	10	

RIGHT OF WAY

DATE 12-52
BY H. J. Winter
SURVEYED
ALIGNED CHECKED
NOTE BOOK NO.

DATE 12-52
BY H. J. Winter
SURVEYED
GRADES CHECKED
NOTE BOOK NO.



B.M. No. 50
Spike in Tel. Pole
Lt. Sta. 563+80
Elev. 4841.99

B.M. No. 51
Spike in P. Pole
30' Lt. Sta. 574+50
Elev. 4841.19

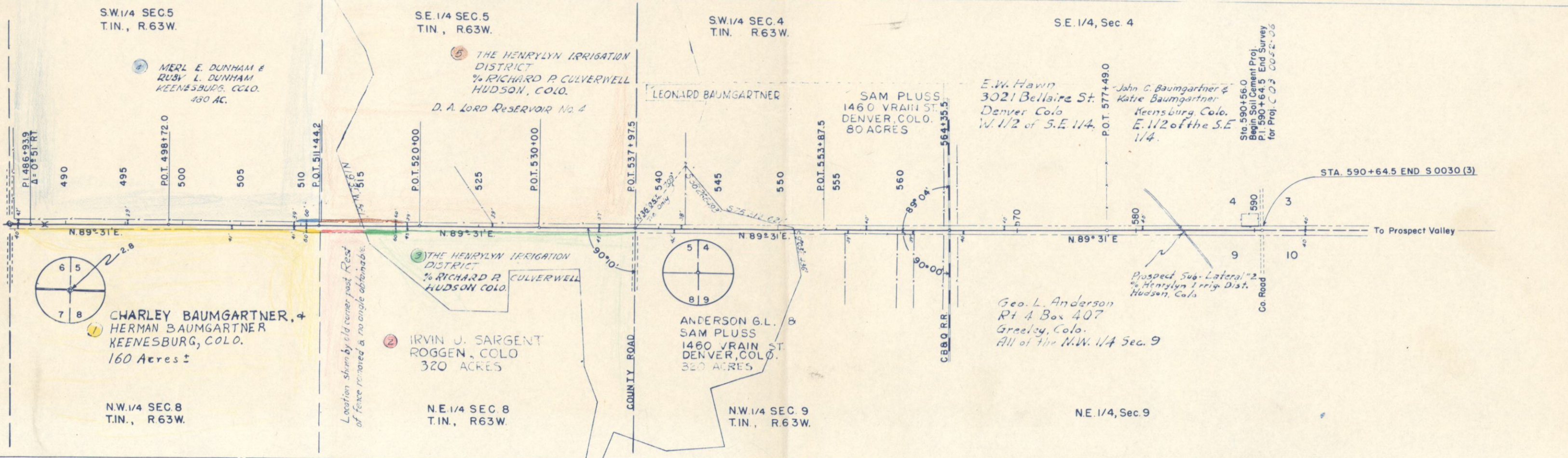
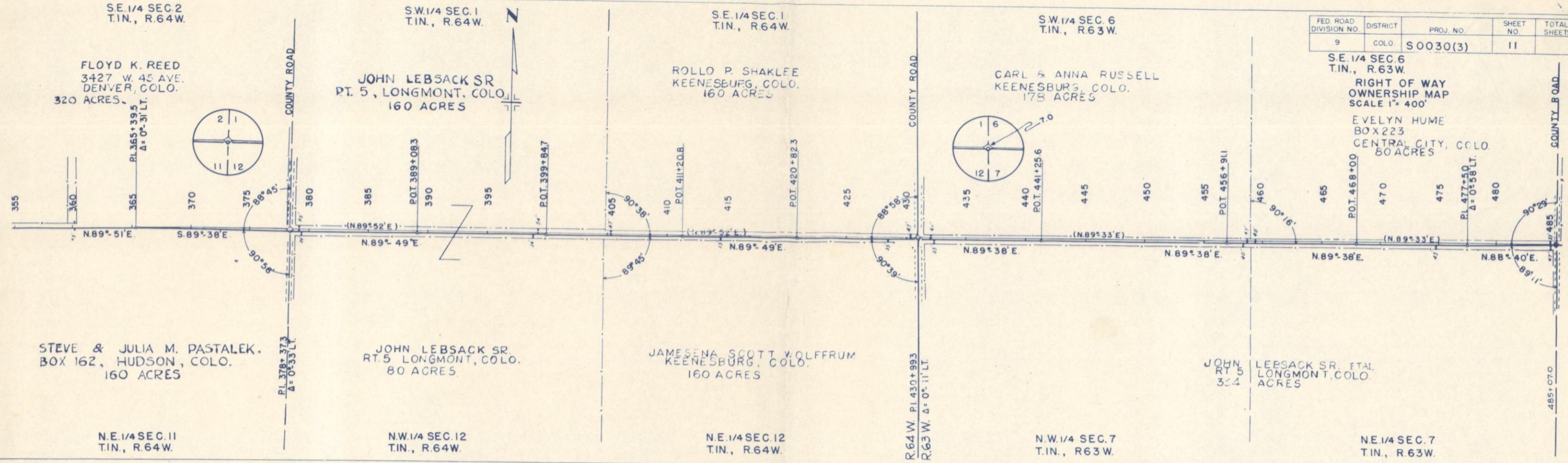
N.E. 1/4, Sec. 9

B.M. No. 52
Spike in Tel. Pole
30' Lt. Sta. 586+65
Elev. 4843.60

B.M. No. 53
Spike in P. Pole
Rt. Sta. 590+40
Elev. 4844.04

FED ROAD DIVISION NO.	DISTRICT	PROJ. NO.	SHEET NO.	TOTAL SHEETS
9	COLO	S0030(3)	11	

SE. 1/4 SEC. 6
T. 18 N., R. 63 W.
RIGHT OF WAY OWNERSHIP MAP
SCALE 1" = 400'
EVELYN HUME
BOX 223
CENTRAL CITY, COLO.
80 ACRES



Location shown by old corner post. Rest of fence removed & no angle obtainable.

Sta. 590+56.0
Begin Soil Cement Proj.
P.I. 590+64.5 End Survey
for Proj. C.O.S. 0052-05

Prospect Sub-Lateral #2
% Henrylyn Irrig. Dist.
Hudson, Colo.

Geo. L. Anderson
Rt 4 Box 407
Greeley, Colo.
All of the N.W. 1/4 Sec. 9

STA. 590+64.5 END S0030(3)

To Prospect Valley

SELECTED BORROW PLAN

It is estimated that material for Gravel Surfacing and Selected Borrow for the project is available in the vicinity of the pits indicated in the following tabulations. Estimated quantities involved in this operation are shown below.

Alteration of the Surfacing and/or Selected Borrow Plans as here outlined will be allowed only on written permission from the Department.

MATERIAL TO BE PLACED	SOURCE	QUANTITY & THICKNESS			OVERHAUL	
		AVAILABLE CU. YDS.	THICKNESS 'T'	CU. YDS.	STATION YARDS	YARD MILES
226+00 to 235+50	Pit #1-A, 16,300'	Pit #1-A 60,000	11"	1416	15576	4070
235+50 to 241+00	to Sta. 226+00		14"	1073	11803	3237
241+00 to 246+00	(Felson & Andrews)		11"	745	8195	2321
246+00 to 248+76	R=64		14"	539	5929	1719
249+22.8 to 252+00			14"	541	5951	1759
252+00 to 261+00			9"	1080	11880	3631
261+00 to 316+50			14"	10823	119053	42995
316+50 to 326+80			9"	1236	13596	5681
327+26.1 to 333+00			9"	689	7579	3277
333+00 to 341+00			14"	1560	17160	7623
341+00 to 359+00		9"	2160	23760	11087	
359+00 to 376+50	Pit #1-200' to Pit #1	14"	3413	37543	18665	
376+50 to 425+00	538+00 R=60 (Anderson) & Pit #3	11"	7227	79497	44040	
445+60 to 478+35	R=60 (Gregg)	* 11"	4881	53691	12532	
478+35 to 488+07	Pit #2-3 Mi. to 554+00 R=60 (Anderson) & Pit #3	* 11"	1449	15939	3751	
488+21 to 554+00	R=64 (Gregg)	* 11"	9803	107833	18314	
554+00 to 590+56	Pit #3-4.5 Mi. to 590+65 R=64 (Gregg)	11"	5448	59928	24761	
Widening Est. for Appr. to Project Est. for Irregularities				359 117 3298	3949 1287 36276	1598 768 15247
PROJECT TOTALS				36,276	399,034	167,718

∅ Based on Design Curve D

R. O. W. MARKERS

STATION	SIDE	NO.
239+20	Rt.	1
252+40	Lt.	1
265+60	Rt.	1
278+80	Lt.	1
292+00	Rt.	1
305+20	Lt.	1
318+40	Rt.	1
331+60	Lt.	1
344+80	Rt.	1
358+00	Lt.	1
371+20	Rt.	1
384+40	Lt.	1
397+60	Rt.	1
410+80	Lt.	1
424+00	Rt.	1
TOTAL		15

STATION	SIDE	NO.
437+00	Lt.	1
450+40	Rt.	1
463+60	Lt.	1
476+80	Rt.	1
490+00	Lt.	1
503+20	Rt.	1
516+40	Lt.	1
529+60	Rt.	1
543+00	Lt.	1
556+20	Rt.	1
570+50	Lt.	1
582+40	Rt.	1
TOTAL		27

SURFACING PLAN

MATERIAL TO BE PLACED	SOURCE	AVAILABLE	TONS USED - GRADING 'D'			TON MILES		
			SHOULDER MATERIAL	3" TOP COURSE SURFACING	3" BASE COURSE SURFACING	SHOULDER	TOP COURSE	BASE COURSE
226+00 to 248+76	Pit #1-A 16,300' to Sta. 226+00 (Felson & Andrews) R=64	60,000 Cu. Yds.	319	843	843	791	2785	2785
249+22.8 to 326+80			1086	2871	2871	3471	12235	12235
327+26.1 to 425+00			1369	3617	3617	6090	21451	21451
Est. for Widening Est. for Road Apprs. + Appr. to Project				85 134	85 287		366 667	366 1428
Total Roadway			2774	7550	7703	10,352	37,504	38,265
Bridge 248+ Bridge 326+				20 20			71 100	
PROJECT TOTALS			2774	7590	7703	10,352	37,675	38,265

▲ Does not include haul for binder. Binder to be obtained within R.O.W.
∅ Shoulder Material is not to be placed across road approaches

FENCING REQUIREMENTS

STATION	SIDE	REMOVE FENCE	REMOVE & REBUILD FENCE ∅	BUILD B. W. FENCE †	GATES B. W. EACH
		LIN. FT.	LIN. FT.	LIN. FT.	
226+00 to 245+40	Rt.		1940		
245+40 to 252+15	Rt.	615			
328+95 to 351+95	Rt.	2340			
352+25 to 352+65	Rt.		40		
325+74 to 330+50	Lt.	470			
332+50 to 341+50	Lt.	920			
343+00 to 351+00	Lt.	890			
357+50 to 360+29	Lt.	280			
245+40 to 252+15	Rt.			620	
328+95 to 351+95	Rt.			2350	
325+74 to 330+50	Lt.			880	
343+00 to 351+00	Lt.			830	
332+50 to 341+50	Lt.			920	
357+50 to 360+29	Lt.			280	
329+41	Rt.+Lt.				2
348+85	Lt.				1
TOTALS		5515	1980	5880	3

† 31 Date nails required (State Forces)
∅ It is estimated that 10 new line posts (treated wood) will be required in Rebuilding Fence.

FEDERAL ROAD DIVISION NO.	DISTRICT	PROJ. NO.	SHEET NO.	TOTAL SHEETS
9	COLORADO	S 0030 (3)	4	

TIMBER GUARD POSTS

STATION	SIDE	SPACING	NO
235+63	Rt.+Lt.	Culvert	2
248+12 to 248+76	Rt.+Lt.	Bridge	10
249+228 to 249+87	Rt.+Lt.	Bridge	10
273+00	Rt.+Lt.	Culvert	2
326+16 to 326+80	Rt.+Lt.	Bridge	10
327+261 to 327+90	Rt.+Lt.	Bridge	10
346+56	Rt.+Lt.	Culvert	2
365+30	Rt.+Lt.	Culvert	2
365+37	Rt.+Lt.	Culvert	2
404+19	Rt.+Lt.	Culvert	2
487+43 to 488+07	Rt.+Lt.	Bridge	10
488+21 to 488+85	Rt.+Lt.	Bridge	10
523+00	Rt.+Lt.	Culvert	2
536+25	Rt.+Lt.	Culvert	2
553+80	Rt.+Lt.	Culvert	2
563+70	Rt.+Lt.	Culvert	2
TOTAL			52