

FED. ROAD DIV. NO.	DIST.	PROJ. NO.	SHEET NO.	TOTAL SHEETS
9	COLO.	S0104(3)	1	

RIGHT OF WAY Rev. 8-21-50 T.L.K.

# COLORADO STATE HIGHWAY DEPARTMENT

## PLAN AND PROFILE OF PROPOSED FEDERAL AID SECONDARY PROJECT NO. S0104(3) STATE HIGHWAY NO. 14 LARIMER COUNTY

### INDEX OF SHEETS

- SHEET NO. 1 TITLE SHEET.
- 2 TABULATION OF PROPERTIES.
- 3-7 PLAN AND PROFILE SHEETS SHOWING RIGHT OF WAY.
- 8 OWNERSHIP MAP

### CONVENTIONAL SIGNS

- CENTER LINE OF SURVEY
- RIGHT OF WAY LINES
- TOWNSHIP LINES
- SECTION LINES
- ONE QUARTER SECTION LINES
- SIXTEENTH SECTION LINE
- PROPERTY OR TRACT LINE
- BARBED WIRE FENCE
- WOVEN WIRE COMBINATION FENCE
- BOARD FENCE
- TELEPHONE & TELEPHONE LINE
- POWER LINE
- WATER MAIN
- PRESENT ROAD (PLAN SHEETS)

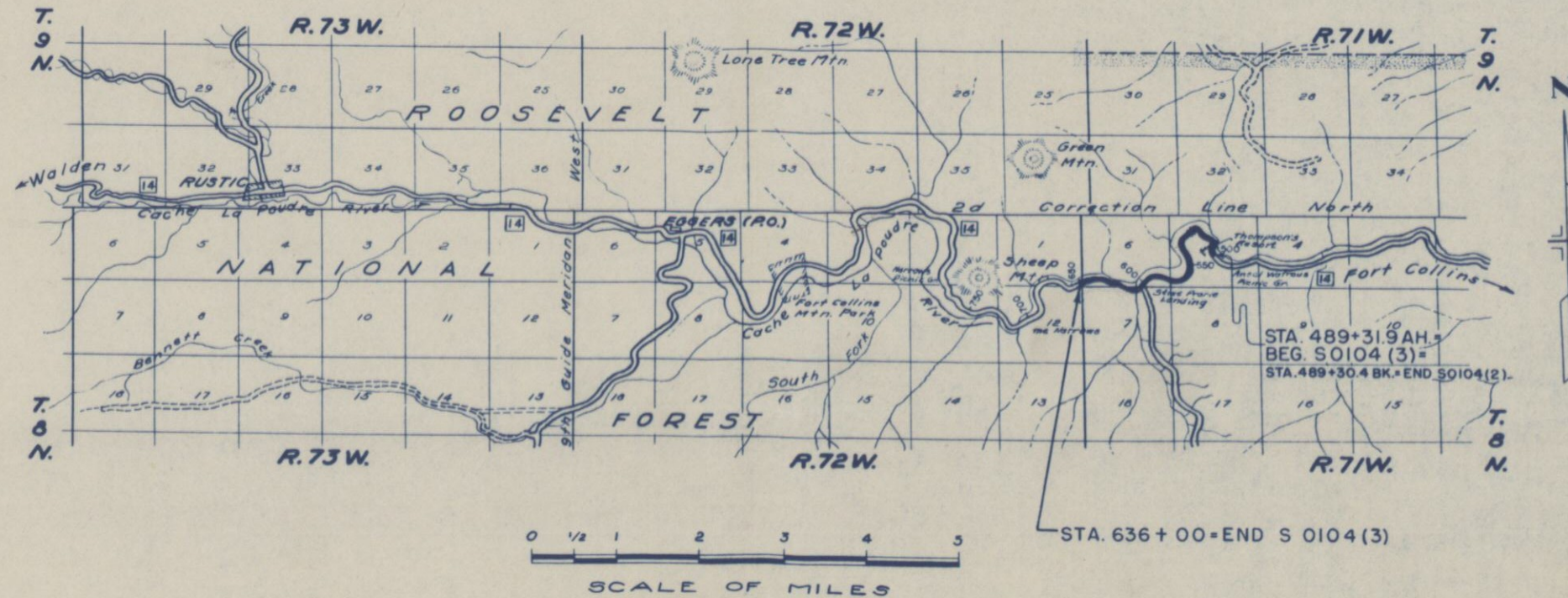


FILE

SCALES OF ORIGINAL TRACINGS  
 ON PLAN, 1 IN. = 100 FT.  
 ON PROFILE 1 IN. = 100 FT. HORIZONTAL  
 1 IN. = 10 FT. VERTICAL  
 GRADE LINE ON PROFILE IS SHOWN AS GRADE OF FINISHED ROAD  
 GROSS LENGTH OF PROJECT  
 NET LENGTH OF PROJECT

### RIGHT OF WAY

CONSTR. ENGR'S. COPY





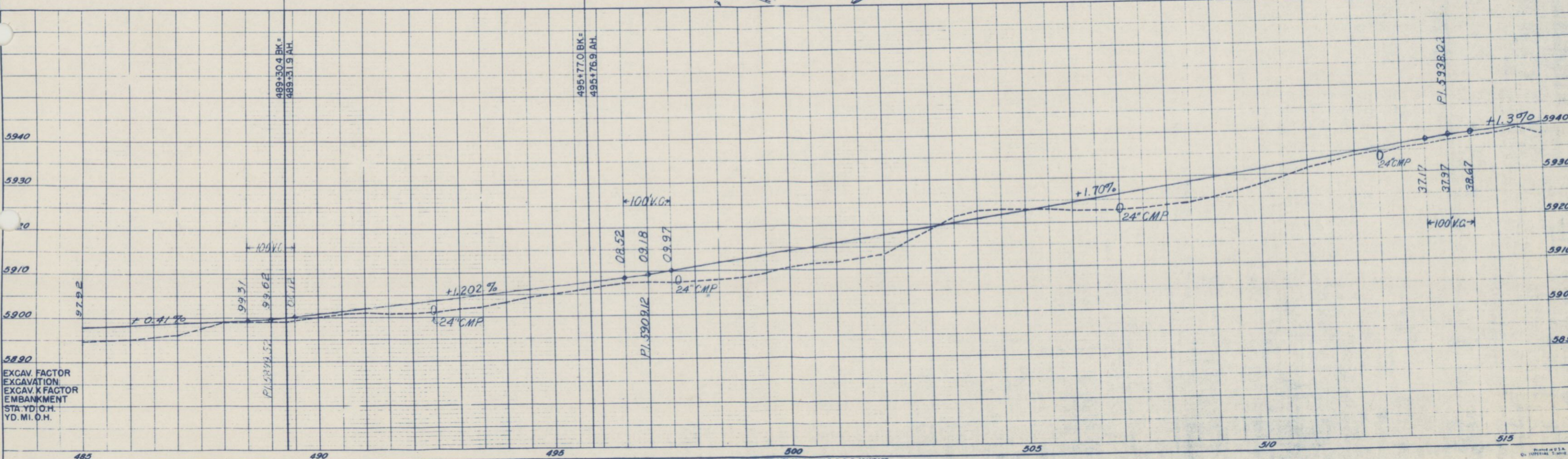
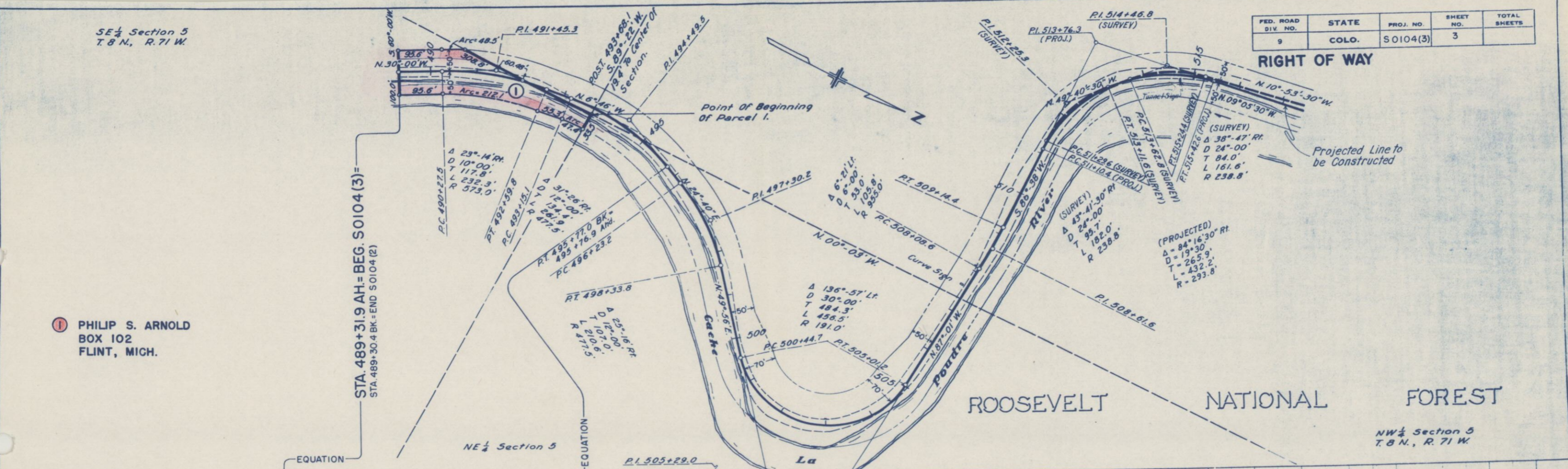
FED. ROAD DIV. NO.	STATE	PROJ. NO.	SHEET NO.	TOTAL SHEETS
9	COLO.	S0104(3)	3	

RIGHT OF WAY

SE 1/4 Section 5  
T. 8 N., R. 71 W.

STA. 489+31.9 AH. = BEG. S0104(3) =  
STA. 489+30.4 BK. = END S0104(2)

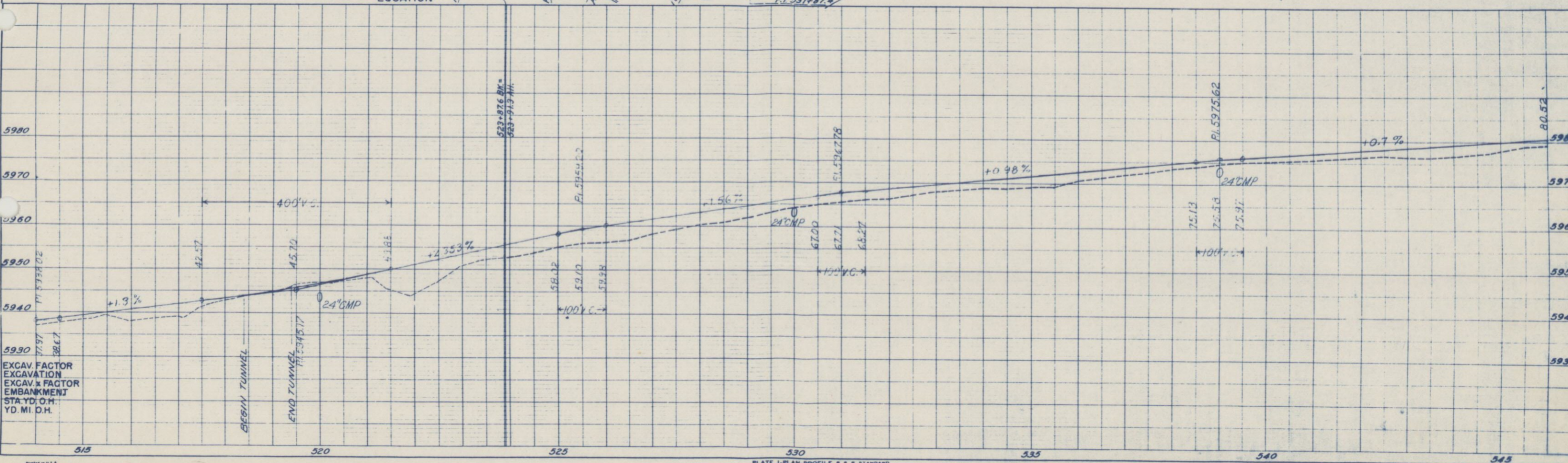
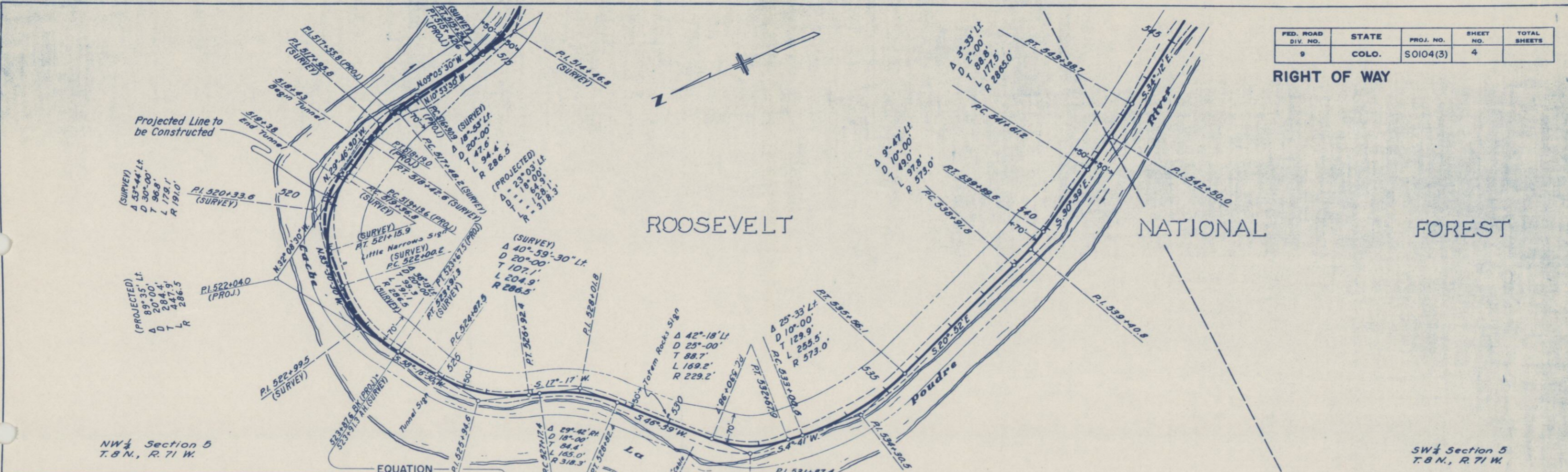
PHILIP S. ARNOLD  
BOX 102  
FLINT, MICH.



EXCAV. FACTOR  
EXCAVATION  
EXCAV. K FACTOR  
EMBANKMENT  
STA. YD. O.H.  
YD. MI. O.H.

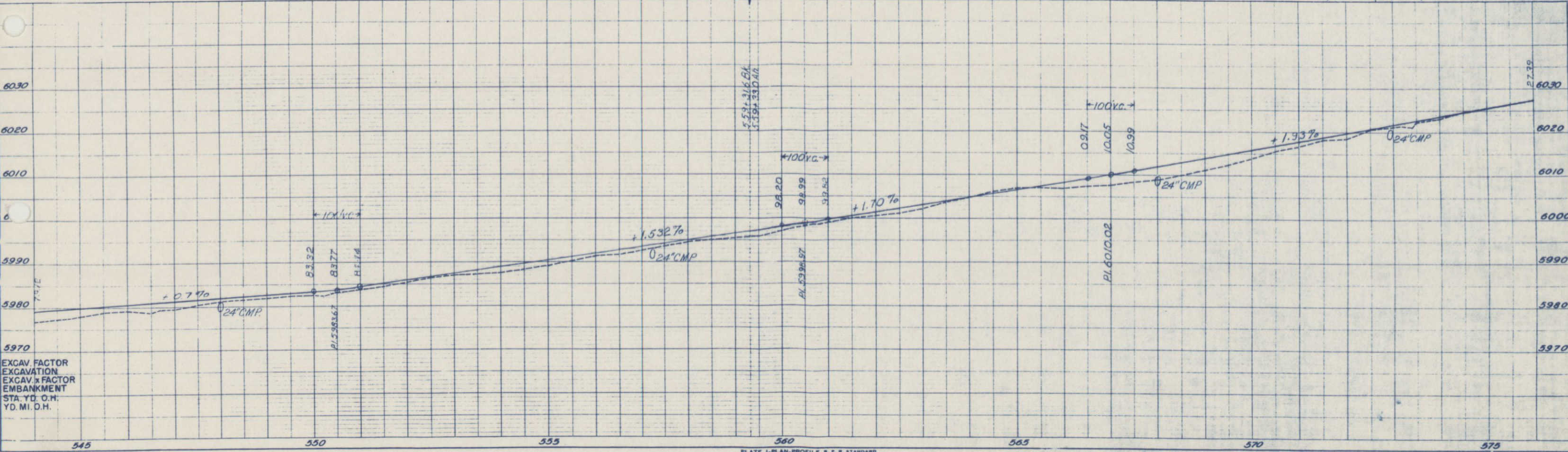
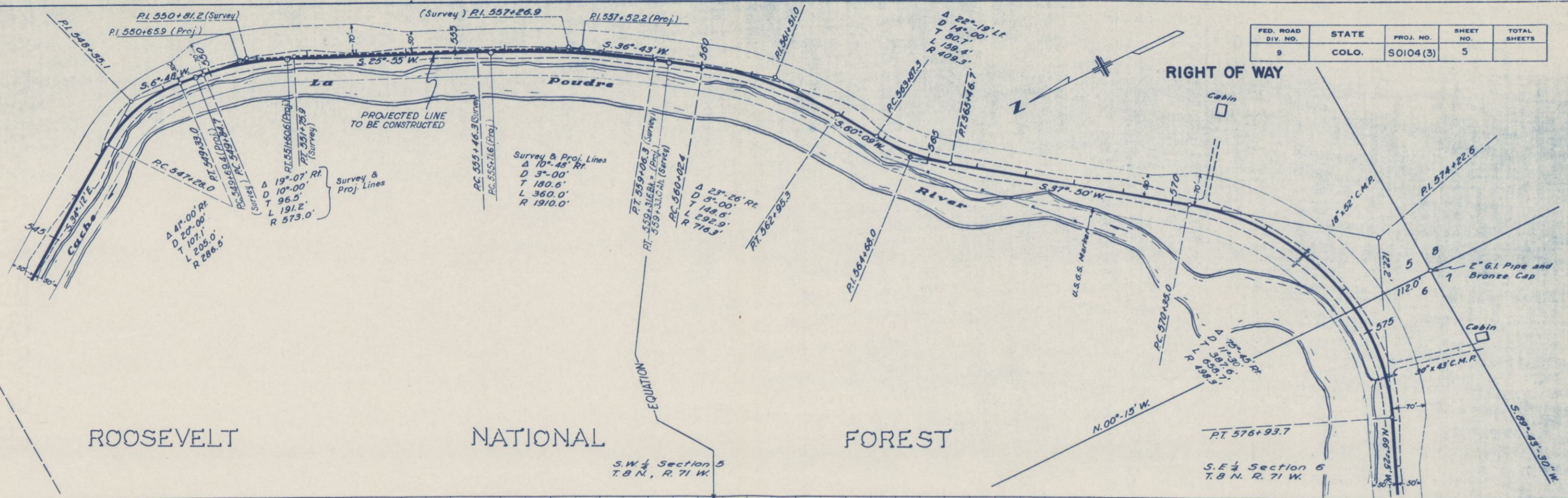
FED. ROAD DIV. NO.	STATE	PROJ. NO.	SHEET NO.	TOTAL SHEETS
9	COLO.	S0104(3)	4	

RIGHT OF WAY

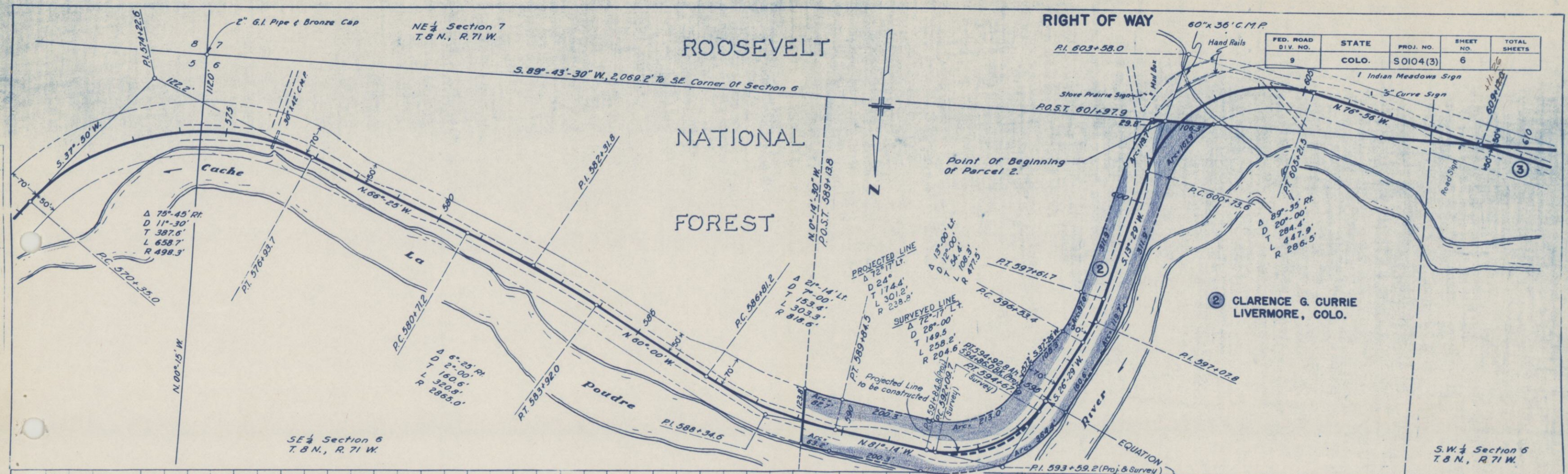


EXCAV. FACTOR  
EXCAVATION  
EXCAV. FACTOR  
EMBANKMENT  
STA. YD. O.H.  
YD. MI. O.H.

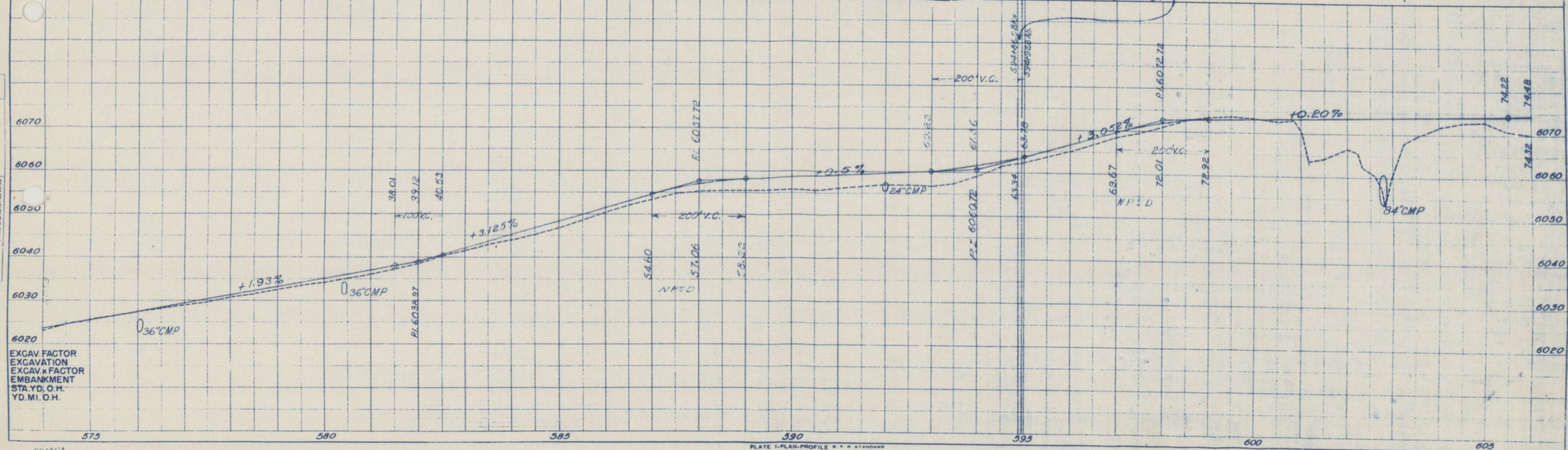
FED. ROAD DIV. NO.	STATE	PROJ. NO.	SHEET NO.	TOTAL SHEETS
9	COLO.	SO104(3)	5	



EXCAV. FACTOR  
EXCAVATION  
EXCAV. x FACTOR  
EMBANKMENT  
STA. YD. O.H.  
YD. MI. O.H.



FED. ROAD DIV. NO.	STATE	PROJ. NO.	SHEET NO.	TOTAL SHEETS
9	COLO.	S0104(3)	6	26



EXCAV. FACTOR  
 EXCAVATION  
 EXCAV. x FACTOR  
 EMBANKMENT  
 STA. YD. O.H.  
 YD. MI. O.H.

NE 1/4 Section 7  
T. 8 N., R. 71 W.

Δ 28°-25' Lt.  
D 14°-00'  
T 103.6'  
L 203.0'  
R 409.3'

N.W. 1/4 Section 7  
T. 8 N., R. 71 W.

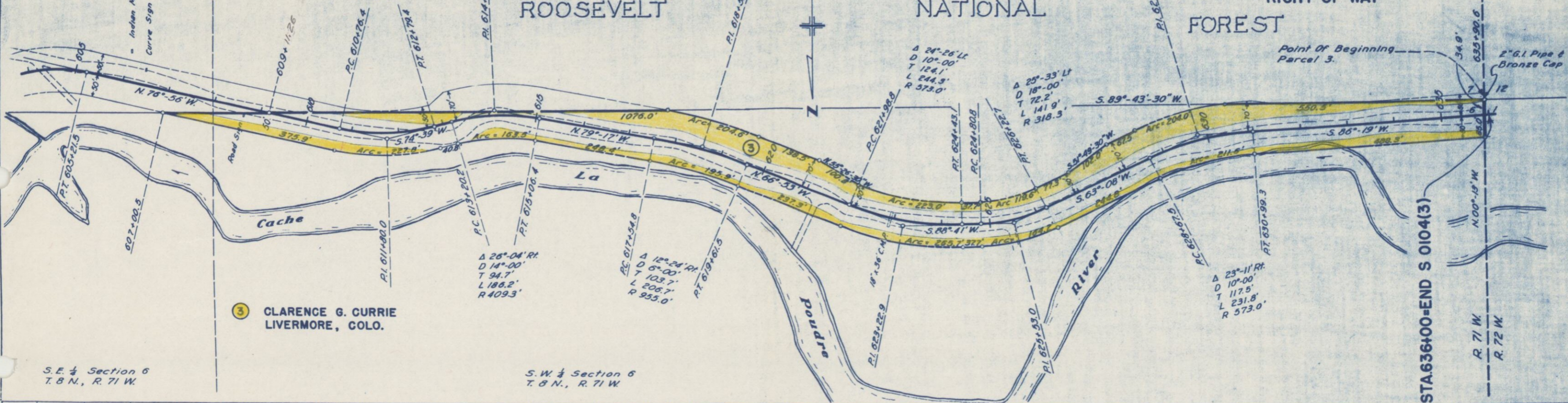
ROOSEVELT

NATIONAL

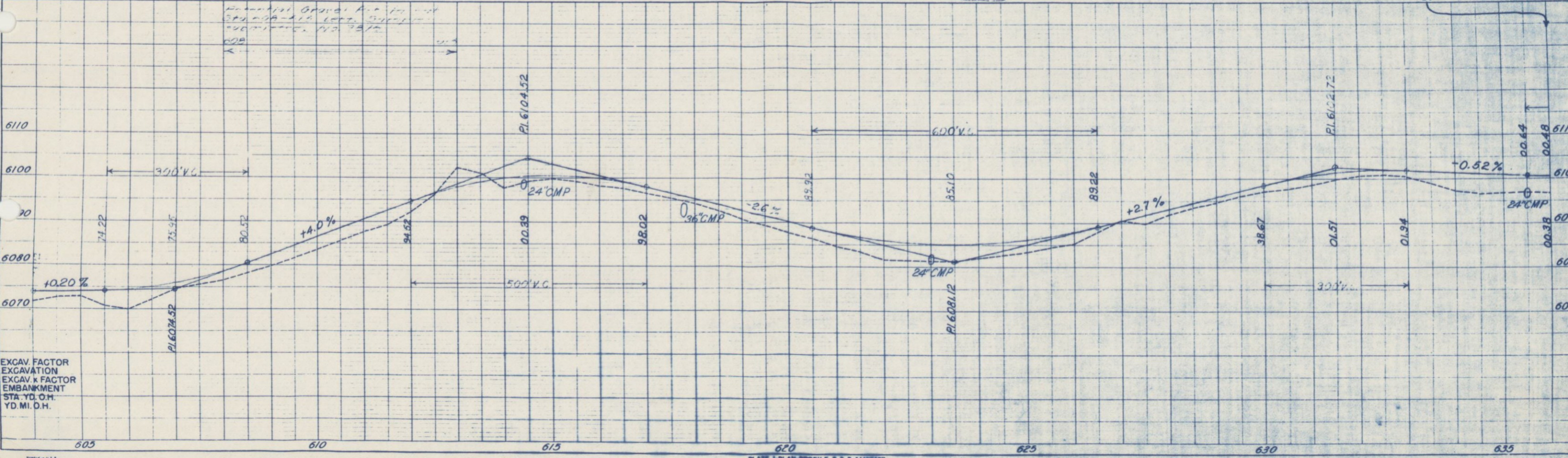
FOREST

FED. ROAD DIV. NO.	STATE	PROJ. NO.	SHEET NO.	TOTAL SHEETS
9	COLO.	SO104(3)	7	

RIGHT OF WAY



3 CLARENCE G. CURRIE  
LIVERMORE, COLO.



EXCAV. FACTOR  
EXCAV. x FACTOR  
EMBANKMENT  
STA. YD. O.H.  
YD. MI. O.H.

FED. ROAD DIST. NO.	STATE	PROJ. NO.	SHEET NO.	TOTAL SHEETS
3	COLO.	S 0104 (3)	8	

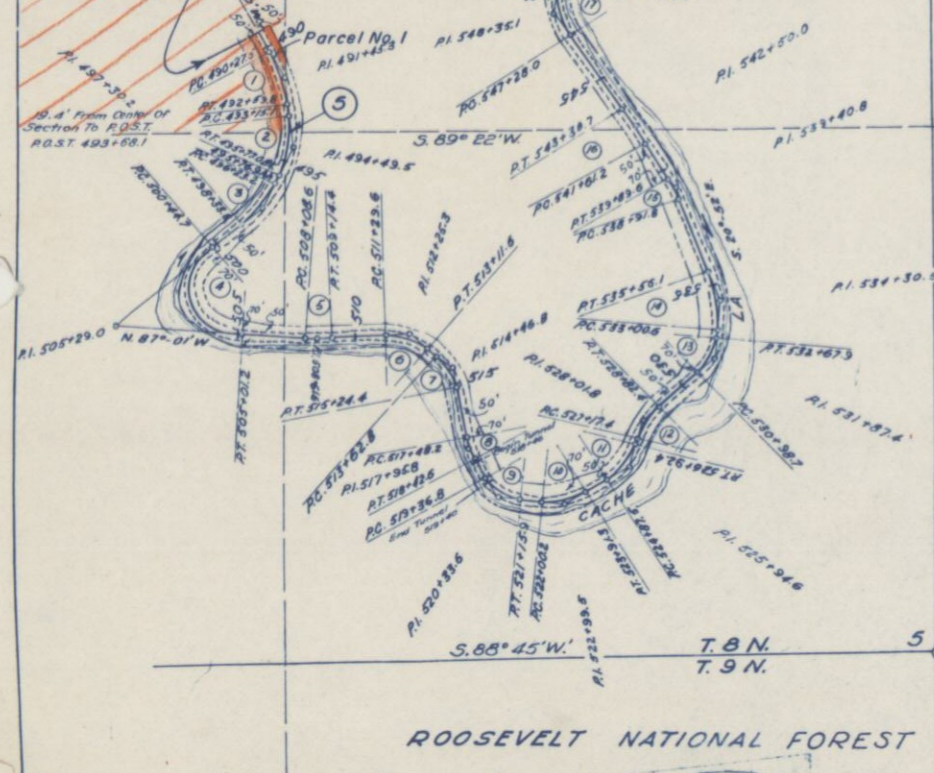
**RIGHT OF WAY OWNERSHIP MAP**

SHOWING CLAIMANTS WITH REGARD TO RIGHT OF WAY FOR PROJECT SPS 6-14-506  
ORIGINAL SCALE 1" = 400'

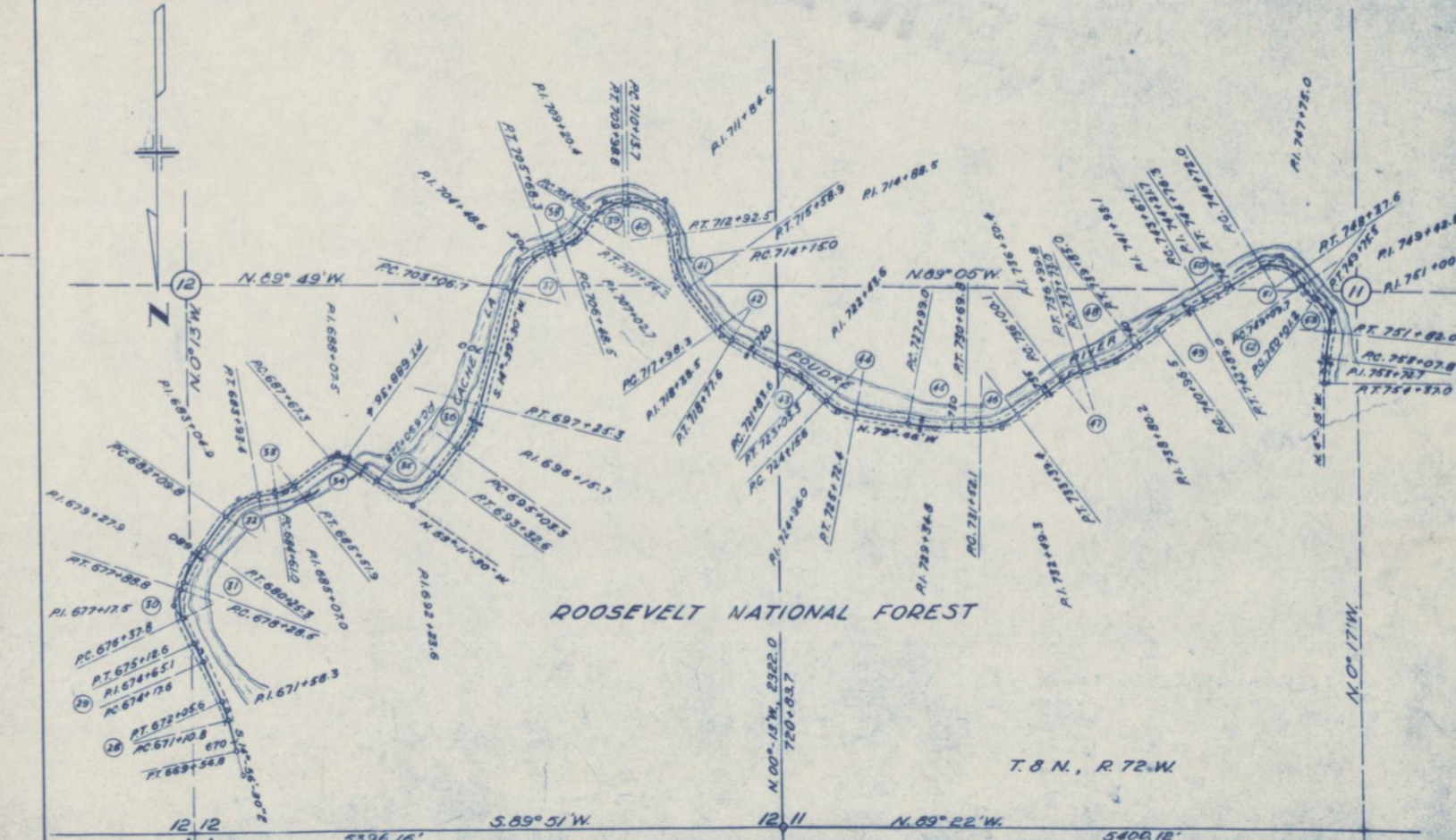
**ROOSEVELT NATIONAL FOREST**

- ① Δ: 23°-14' RT. D: 10°-00'. T: 172.8'. L: 232.3'. R: 573.0'
- ② Δ: 31°-26' RT. D: 12°-00'. T: 134.4'. L: 261.9'. R: 477.5'
- ③ Δ: 25°-18' RT. D: 12°-00'. T: 107.0'. L: 210.6'. R: 477.5'
- ④ Δ: 18°-57' LT. D: 30°-00'. T: 484.3'. L: 458.5'. R: 191.0'
- ⑤ Δ: 6°-21' LT. D: 6°-00'. T: 53.0'. L: 105.8'. R: 350.0'
- ⑥ Δ: 47°-41' 30" RT. D: 12°-00'. T: 35.7'. L: 182.0'. R: 238.8'
- ⑦ Δ: 38°-47' RT. D: 24°-00'. T: 184.0'. L: 181.8'. R: 238.8'
- ⑧ Δ: 18°-53' LT. D: 20°-00'. T: 47.6'. L: 94.4'. R: 286.5'
- ⑨ Δ: 53°-44' LT. D: 30°-00'. T: 96.8'. L: 179.1'. R: 191.0'
- ⑩ Δ: 38°-18' LT. D: 30°-00'. T: 98.8'. L: 191.1'. R: 286.5'
- ⑪ Δ: 40°-53' 30" LT. D: 20°-00'. T: 107.1'. L: 204.9'. R: 286.5'
- ⑫ Δ: 29°-42' RT. D: 18°-00'. T: 84.6'. L: 165.0'. R: 318.3'
- ⑬ Δ: 42°-18' LT. D: 25°-00'. T: 88.7'. L: 159.2'. R: 229.2'
- ⑭ Δ: 25°-33' LT. D: 10°-00'. T: 49.0'. L: 97.8'. R: 286.5'
- ⑮ Δ: 9°-47' LT. D: 10°-00'. T: 49.0'. L: 97.8'. R: 286.5'
- ⑯ Δ: 3°-33' LT. D: 18°-00'. T: 88.8'. L: 177.5'. R: 286.5'
- ⑰ Δ: 41°-00' RT. D: 20°-00'. T: 107.1'. L: 205.0'. R: 286.5'
- ⑱ Δ: 19°-07' RT. D: 10°-00'. T: 49.0'. L: 97.8'. R: 286.5'
- ⑲ Δ: 23°-26' RT. D: 8°-00'. T: 148.8'. L: 292.5'. R: 716.3'
- ⑳ Δ: 21°-14' LT. D: 7°-00'. T: 153.4'. L: 303.3'. R: 518.5'
- ㉑ Δ: 78°-13' LT. D: 28°-00'. T: 149.5'. L: 258.2'. R: 286.6'
- ㉒ Δ: 13°-00' LT. D: 12°-00'. T: 88.7'. L: 108.3'. R: 277.5'
- ㉓ Δ: 25°-33' LT. D: 18°-00'. T: 72.2'. L: 141.9'. R: 409.3'
- ㉔ Δ: 20°-08' RT. D: 18°-00'. T: 96.7'. L: 186.2'. R: 409.3'
- ㉕ Δ: 25°-33' LT. D: 18°-00'. T: 72.2'. L: 141.9'. R: 318.3'
- ㉖ Δ: 43°-50' LT. D: 22°-00'. T: 121.0'. L: 226.5'. R: 260.5'
- ㉗ Δ: 9°-23' LT. D: 10°-00'. T: 49.0'. L: 97.8'. R: 286.5'

① PHILIP S. ARNOLD  
BOX 102  
FLINT, MICH.  
IN NW 1/4, S.E. 4, SEC. 5  
STA. 489+31.9 AH.  
BEGIN S 0104(3)  
STA. 489+30.4 BK.  
END S 0104(2)



- ⑳ Δ: 9°-23' LT. D: 10°-00'. T: 49.0'. L: 97.8'. R: 286.5'
- ㉑ Δ: 1°-54' LT. D: 2°-00'. T: 47.6'. L: 94.4'. R: 286.5'
- ㉒ Δ: 45°-18' RT. D: 30°-00'. T: 79.7'. L: 151.0'. R: 191.0'
- ㉓ Δ: 19°-41' RT. D: 10°-00'. T: 49.0'. L: 97.8'. R: 286.5'
- ㉔ Δ: 36°-48' 30" RT. D: 30°-00'. T: 98.1'. L: 185.8'. R: 286.5'
- ㉕ Δ: 21°-49' 30" LT. D: 46.0'. T: 30.9'. L: 60.9'. R: 238.8'
- ㉖ Δ: 73°-15' RT. D: 106°-00'. T: 40.1'. L: 69.1'. R: 54.1'
- ㉗ Δ: 89°-47' LT. D: 30°-00'. T: 130.8'. L: 239.8'. R: 191.0'
- ㉘ Δ: 22°-12' LT. D: 10°-00'. T: 112.4'. L: 222.0'. R: 432.5'
- ㉙ Δ: 54°-58' 30" RT. D: 21°-00'. T: 141.9'. L: 261.6'. R: 272.9'
- ㉚ Δ: 19°-56' RT. D: 20°-00'. T: 50.3'. L: 99.7'. R: 286.5'
- ㉛ Δ: 50°-58' 30" RT. D: 30°-00'. T: 79.7'. L: 151.0'. R: 191.0'
- ㉜ Δ: 23°-47' LT. D: 24°-00'. T: 40.2'. L: 79.3'. R: 191.0'
- ㉝ Δ: 28°-47' LT. D: 20°-00'. T: 73.5'. L: 145.2'. R: 286.5'
- ㉞ Δ: 31°-31' 30" LT. D: 30°-00'. T: 80.4'. L: 156.8'. R: 286.5'
- ㉟ Δ: 11°-58' RT. D: 10°-00'. T: 60.0'. L: 119.7'. R: 286.5'
- ㊱ Δ: 3°-21' 30" LT. D: 20°-00'. T: 103.0'. L: 165.6'. R: 110.2'
- ㊲ Δ: 57°-41' RT. D: 32°-00'. T: 39.0'. L: 180.8'. R: 179.1'
- ㊳ Δ: 12°-55' LT. D: 10°-00'. T: 73.5'. L: 145.2'. R: 286.5'



**ROOSEVELT NATIONAL FOREST**

T. 8 N., R. 72 W.