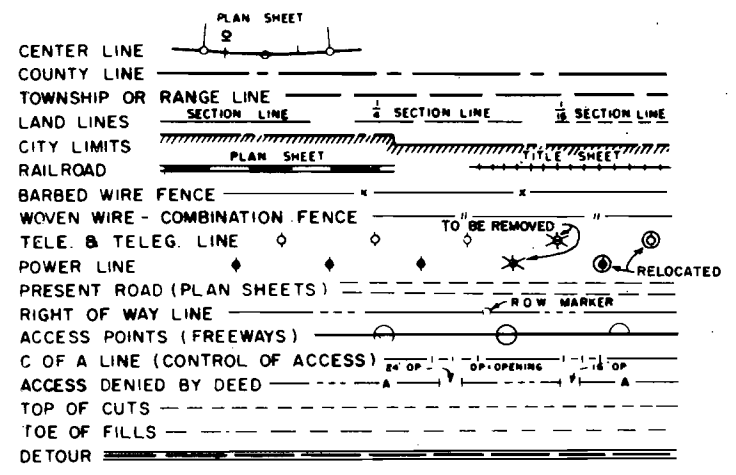


THE STATE DEPARTMENT OF HIGHWAYS DIVISION OF HIGHWAYS—STATE OF COLORADO

FEDERAL ROAD REGION NO.	DIVISION	PROJECT NO.	SHEET NO.
9	COLORADO	S 0119(14)	1
RIGHT OF WAY SOUTH OF CRESTED BUTTE			REVISIONS

CONVENTIONAL SIGNS



PLAN AND PROFILE OF PROPOSED FEDERAL AID PROJECT NO. S 0119(14) STATE HIGHWAY NO. 135 GUNNISON COUNTY RIGHT OF WAY

SCALE OF ORIGINAL DRAWINGS
 PLAN SHEETS 1" = 100'
 DETAIL SHEETS 1" = 100'
 OWNERSHIP MAPS 1" = 200'

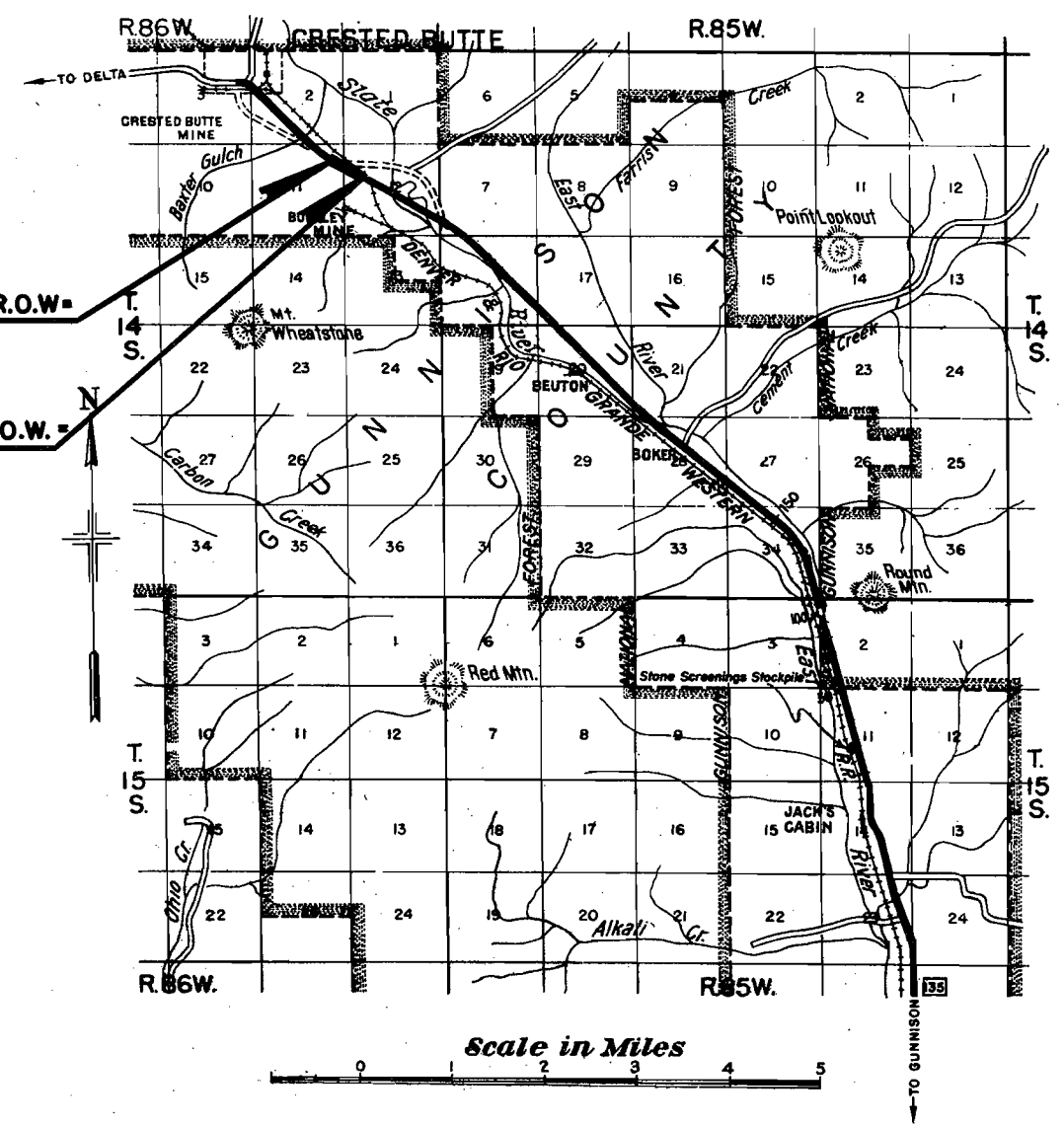
R.O.W. LENGTH OF PROJECT = 0.389 MILES

INDEX OF SHEETS

SHEET NO. 1	TITLE SHEET
SHEET NO. 2	TABULATION OF PROPERTIES
SHEET NO. 3	PLAN & PROFILE ALIGNMENT
SHEET NO. 4	OWNERSHIP MAP

END PROJECT S 0119(14) STA. 487 +02.2 CONST. & R.O.W. =
 Sta. 487 +34.1 Project S 0119(9)

BEGIN PROJECT S 0119(14) STA. 466 +49.9 CONST. & R.O.W. =
 Sta. 466 +49.9 Project S 0119(9)



T.14S., R.86W., 6th.P.M.

FED. ROAD REG. NO.	DIVISION	PROJ. NO.	SHEET NO.	TOTAL SHEETS
9	COLO.	3-0119(4)	3	4

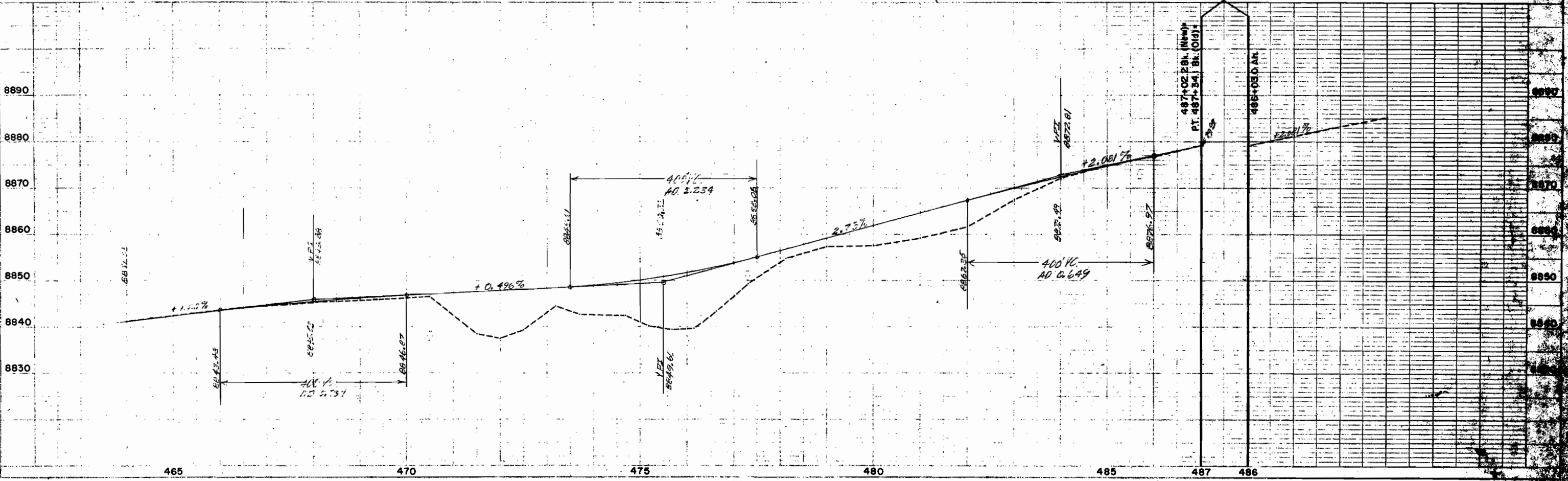
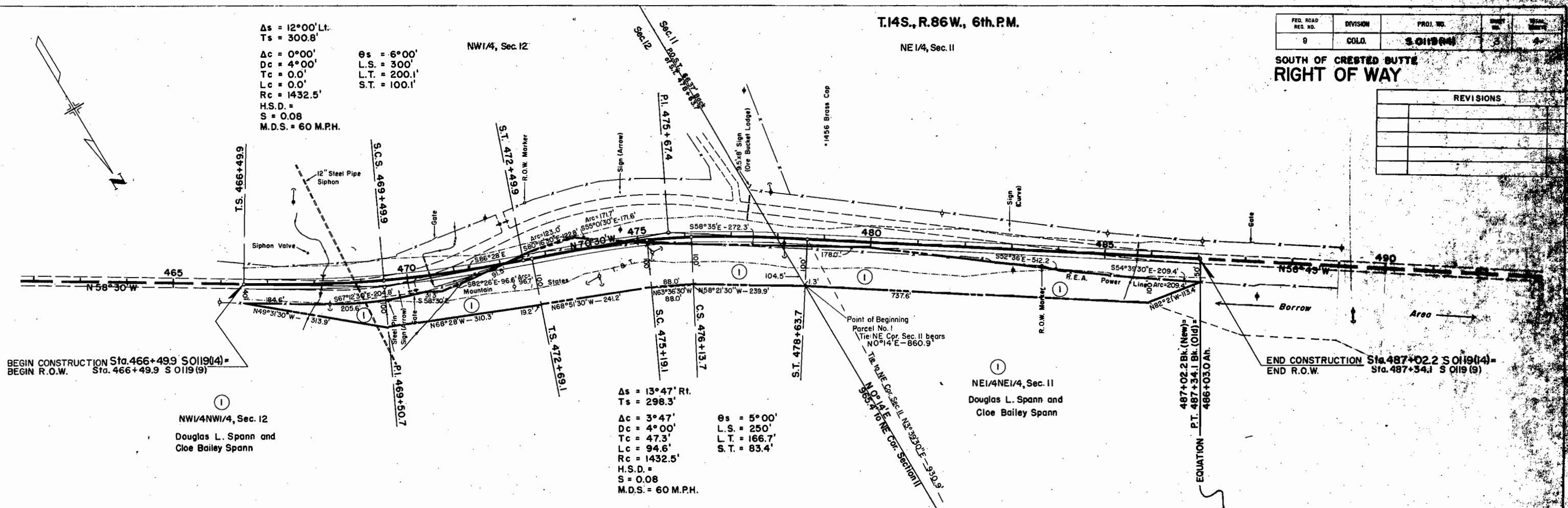
SOUTH OF CRESTED BUTTE
RIGHT OF WAY

REVISIONS	

$\Delta s = 12^{\circ}00'$ Lt.
 $Ts = 300.8'$
 $\Delta c = 0^{\circ}00'$
 $Dc = 4^{\circ}00'$
 $Tc = 0.0'$
 $Lc = 0.0'$
 $Rc = 1432.5'$
 $H.S.D. =$
 $S = 0.08$
 $M.D.S. = 60 \text{ M.P.H.}$

$\theta s = 6^{\circ}00'$
 $L.S. = 300'$
 $L.T. = 200.1'$
 $S.T. = 100.1'$

$\Delta s = 13^{\circ}47'$ Rt.
 $Ts = 298.3'$
 $\Delta c = 3^{\circ}47'$
 $Dc = 4^{\circ}00'$
 $Tc = 47.3'$
 $Lc = 94.6'$
 $Rc = 1432.5'$
 $H.S.D. =$
 $S = 0.08$
 $M.D.S. = 60 \text{ M.P.H.}$



THE STATE DEPARTMENT OF HIGHWAYS
 DIVISION OF HIGHWAYS - STATE OF COLORADO
PROJECT S 0119(14)
 R.O.W. OWNERSHIP MAP
 GUNNISON COUNTY
 T.14S, R.86W, 6th P.M.
 Scale 1" = 200'

FEDERAL ROAD REGION NO.	DISTRICT	PROJ. NO.	SHEET NO.	TOTAL SHEETS
9	COLORADO	S 0119(14)	4	4

RIGHT OF WAY
 SOUTH OF CRESTED BUTTE

REVISIONS	

