

INDEX OF SHEETS

- SHEET NO. 1 TITLE SHEET
- 2-2A TABULATION OF PROPERTIES
- 3-7 PLAN AND PROFILE SHEETS SHOWING RIGHT OF WAY
- 8 OWNERSHIP MAP

COLORADO DEPARTMENT OF HIGHWAYS

PLAN AND PROFILE OF PROPOSED FEDERAL AID PROJECT NO. SO150(4) STATE HIGHWAY NO. 145 SAN MIGUEL COUNTY RIGHT OF WAY

FED. ROAD DIST. NO.	STATE		SHEET NO.	TOTAL SHEETS
3	COLO.	SO150(4)	1	

RIGHT OF WAY

CONVENTIONAL SIGNS

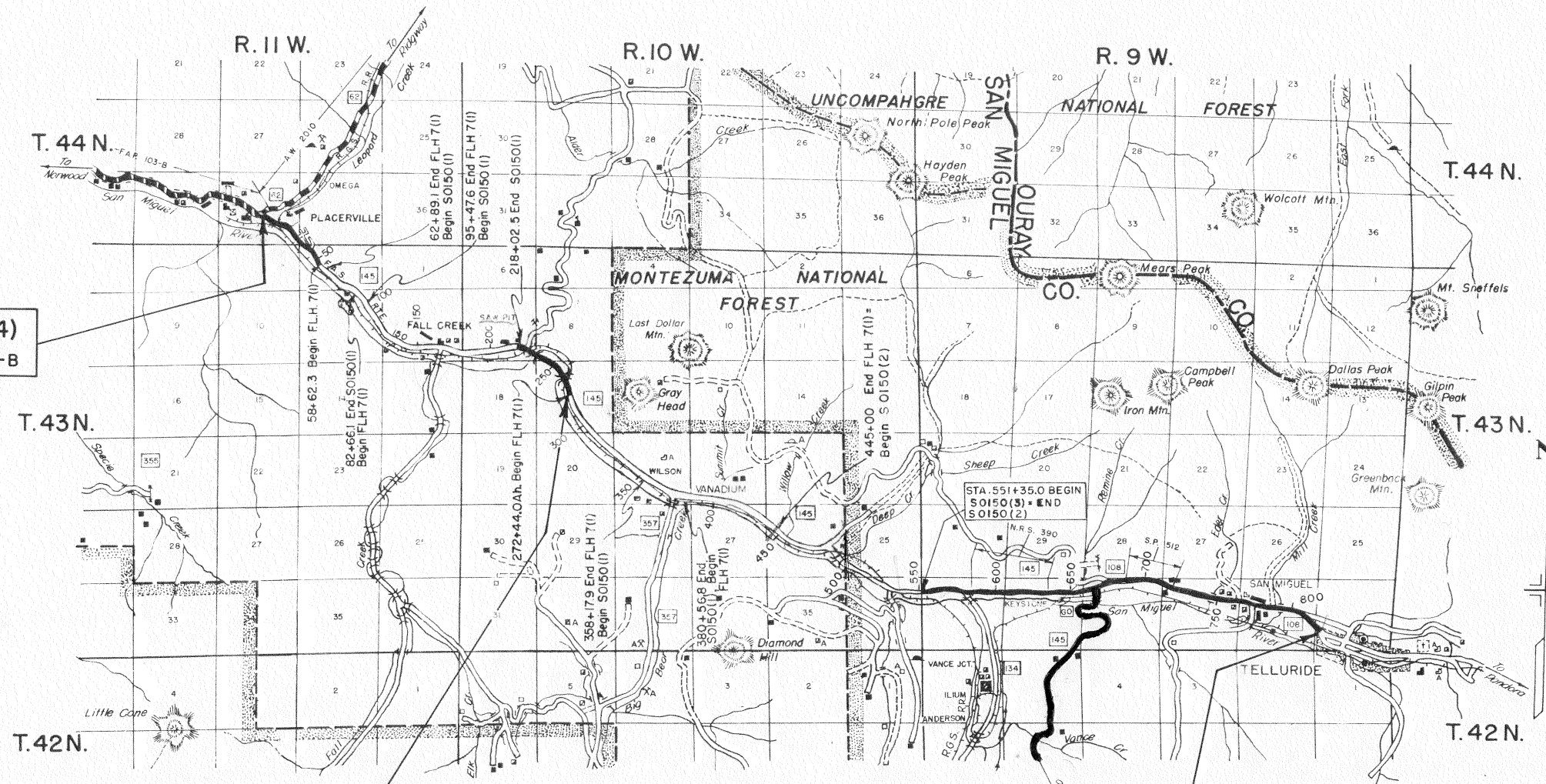
- CENTER LINE OF SURVEY Title Sheet
- RIGHT OF WAY LINE
- COUNTY LINE
- TOWNSHIP OR RANGE LINE T. 43 N., R. 10 W.
- SECTION LINE T. 43 N., R. 11 W.
- QUARTER SECTION LINE
- SIXTEENTH SECTION LINE
- CITY LIMITS
- RAILROAD
- BARBED WIRE FENCE
- WOVEN WIRE-COMBINATION FENCE
- PICKET FENCE
- TELEPHONE LINE
- R.R. TELEGRAPH LINE
- POWER LINE
- WATER MAIN
- PRESENT ROAD

SCALES OF ORIGINAL TRACINGS
ON PLAN, 1 IN. = 100 FT.
ON PROFILE 1 IN. = 100 FT. HORIZONTAL
1 IN. = 10 FT. VERTICAL

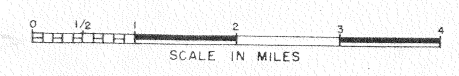
GRADE LINE ON PROFILE IS SHOWN AS GRADE OF FINISHED ROAD

GROSS LENGTH OF PROJECT
NET LENGTH OF PROJECT

STA. 1+44.7 BEGIN SO150(4)
OPPOSITE STA. 673+50 ON F.A.P. 103-B



STA. 272+75.0 Bk. END SO150(4)
FOR RIGHT OF WAY PURPOSES



STA. 842+65.0 END SO150(4)=
RIGHT OF WAY ACQUIRED UNDER SO150(3)
STA. 842+65 END SO150(3)

R.O.W. TABULATION OF PROPERTIES IN SAN MIGUEL COUNTY S.H.No. 145 PROJ. S0150 (4)

FEDERAL ROAD DIVISION NO.	DISTRICT	PROJ. NO.	SHEET NO.	TOTAL SHEETS
9	COLORADO	S0150 (4)	2	

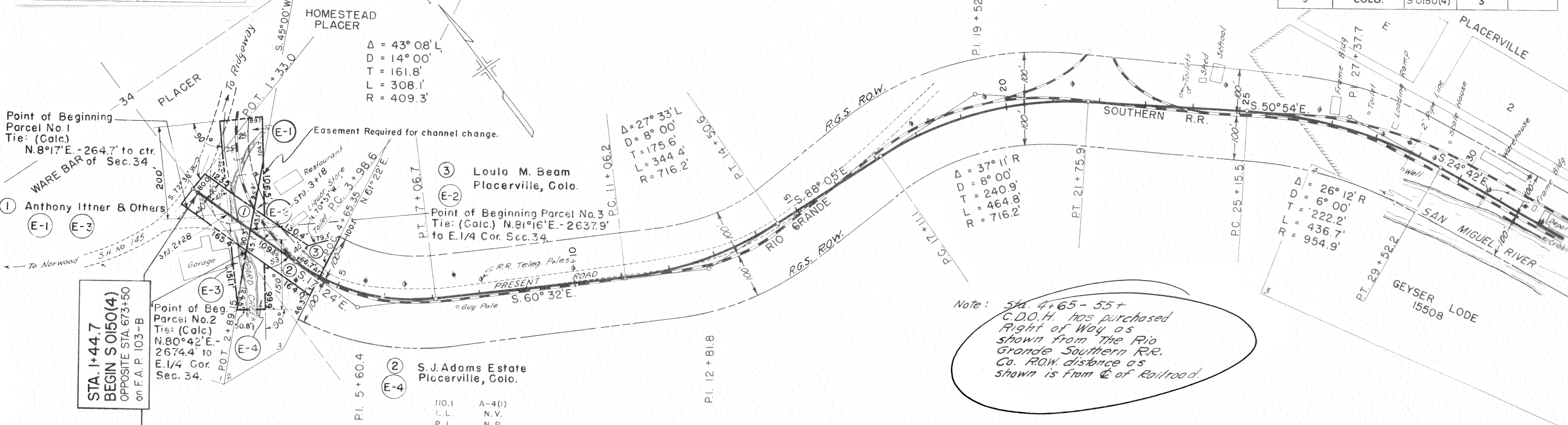
RIGHT OF WAY

PARCEL NO.	OWNER	ADDRESS	LOCATION	AREA IN ACRES			REMARKS	NO.
				TOTAL LAND IN TRACT	PARCEL	TO BE ACQUIRED		
1	ANTHONY ITTNER 26/32 ELLEN M. GREENWAY 6/32 JOSIE E. WITTE HENRY C. HAARSTICK 4/32 MARY ISABELLA ITTNER 2/32		T.44 N. R.II.W. S.1/2, SEC.34		0.265	0.046	Ware Bar Placer Last two deeds from Anthony Ittner out of his 26/32	1
2	S.J.ADAMS ESTATE	PLACERVILLE, COLORADO	S.E.1/4, SEC.34		0.161	0.130	Homestead Placer	2
3	LOULA M. BEAM	PLACERVILLE, COLORADO	S.E.1/4, SEC.34		0.208	0.042	Homestead Placer	3
4	ARCHIE and MINNIE WERRY	PLACERVILLE, COLORADO	T.43N. R.II.W. S.W.1/4, SEC.2		0.138	0.034		
5	LOU SALLY A. GUTHRIE	PLACERVILLE, COLORADO	T.43N. R.IOW. S.E.1/4, SEC.7		0.169	0.114	Portions of Lots 37,39,41,43,45,47, Block 5, Sawpit	5
6	MANUEL WEEKS and ANNA WEEKS	PLACERVILLE, COLORADO	S.E.1/4, SEC.7		0.115	0.071	Portions of Lots 27,29,31,33,35, Block 5, Sawpit	6
7	RUTH GROSSO and LOUIE GROSSO	PLACERVILLE, COLORADO	S.E.1/4, SEC.7		0.299	0.029	Portions of Lots 17,19,21,23,25, Block 3, Sawpit	7
8	WILLIAM A. GUTHRIE & OTHERS	PLACERVILLE, COLORADO	S.E.1/4, SEC.7		0.149	0.008	Portions of Lots 40,42,44, Block 4, Sawpit	8
9	SANFORD N. SEEVERS & FRANCES M. SEEVERS	PLACERVILLE, COLORADO	S.E.1/4, SEC.7		0.115	0.040	Portions of Lots 30,32,34,36,38, Block 4, Sawpit	9
10	LAWRENCE ROSS and EVA ROSS	PLACERVILLE, COLORADO	S.E.1/4, SEC.7		0.023	0.012	Portion of Lot 28, Block 4, Sawpit	10
11	ETHEL ROSS	PLACERVILLE, COLORADO	S.E.1/4, SEC.7		0.092	0.055	Portions of Lots 20,22,24,26, Block 2, Sawpit	11
12	RALPH E. SMITH	PLACERVILLE, COLORADO	S.E.1/4, SEC.7		0.091	0.069	Portions of Lots 12,14,16,18, Block 2, Sawpit	12
13	ETTIE B. PROPER	PLACERVILLE, COLORADO	S.E.1/4, SEC.7		0.181	0.034	Portions of Lots "A", 10, 9, Block 1, Sawpit	13
14	SAN MIGUEL COUNTY	TELLURIDE, COLORADO	S.E.1/4, SEC.7		2.815	1.943	Portion of Sawpit	14
15	HELEN NEILSON	RIDGEWAY, COLORADO	S.E.1/4, SEC.7 S.W.1/4, SEC.8		1.430	0.899	A. Placer	15
15-A	HELEN NEILSON	RIDGEWAY, COLORADO	S.E.1/4, SEC.7		0.032	0.032	A. Placer	15-A
16	UNITED STATES GOVERNMENT		S.E.1/4, SEC.7		2.318	2.145	Vacant Public Land	16
17	UNITED STATES GOVERNMENT		S.W.1/4, SEC.8		1.852	1.582	Vacant Public Land	17
18	HELEN NEILSON	RIDGEWAY, COLORADO	S.W.1/4, SEC.8; N.W.1/4, SEC.17		7.637	5.686	Old Joe Placer	18
19	UNITED STATES GOVERNMENT		N.W.1/4, SEC.17		7.845	5.480	Vacant Public Land	19

PLAN	SURVEYED	BY	DATE
NOTE BOOK	PLOTTED		
NO 1731D	ALIGNMENT CHECKED		
	RT. OF WAY CHECKED		

RIGHT OF WAY

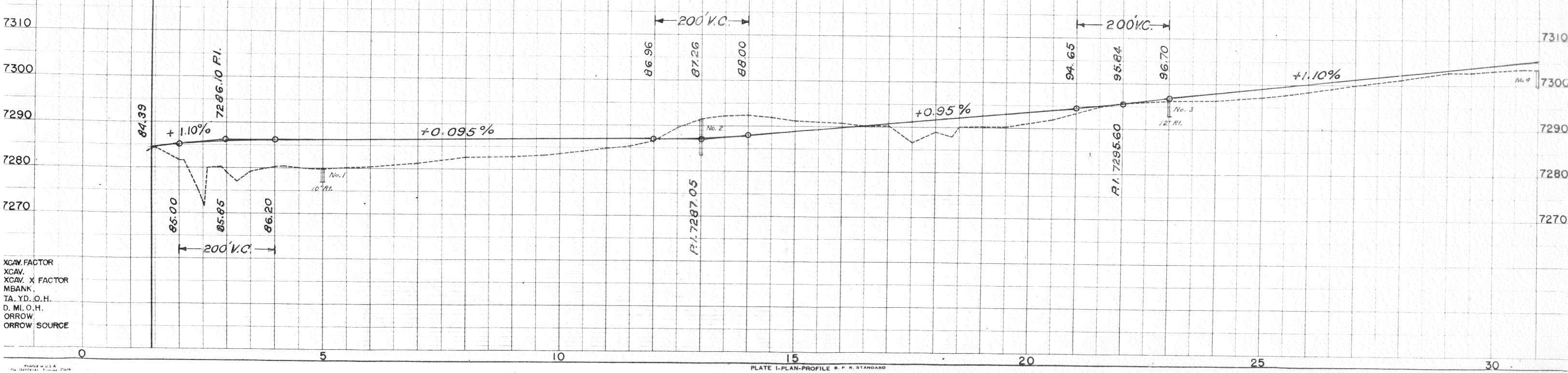
FED. ROAD DIST. NO.	STATE	PROJ. NO.	SHEET NO.	TOTAL SHEETS
3	COLO.	S 0150(4)	3	



Note: Sta. 4+65-55+ C.D.O.H. has purchased Right of Way as shown from the Rio Grande Southern R.R. Co. ROW distance as shown is from C of Railroad.

NO. 1	A-4(1)	NO. 2	A-1-B(0)	NO. 3	A-4(4)	NO. 4	A-4(6)
L.L.	N.V.	L.L.	N.V.	L.L.	N.V.	L.L.	N.V.
P. I.	N.P.	P. I.	N.P.	P. I.	N.P.	P. I.	N.P.
-200 = 40.0%		-200 = 19.0%		-200 = 56.0%		-200 = 63.0%	
C.B.R. = 15.2		R = 75.0		C.B.R. = 5.7		C.B.R. = 4.7	

NOTE:
Alignment and Grades as shown are subject to modification during construction after approval by the Denver Office.
Soil data shown on the plans is obtained from best available laboratory information. This information is shown for convenience of the Contractor and the Department does not guarantee the accuracy of these tests. If materials not conforming to the data on plans are encountered during construction the grading plan shown on plans will be modified where necessary to secure dense, stable embankments.

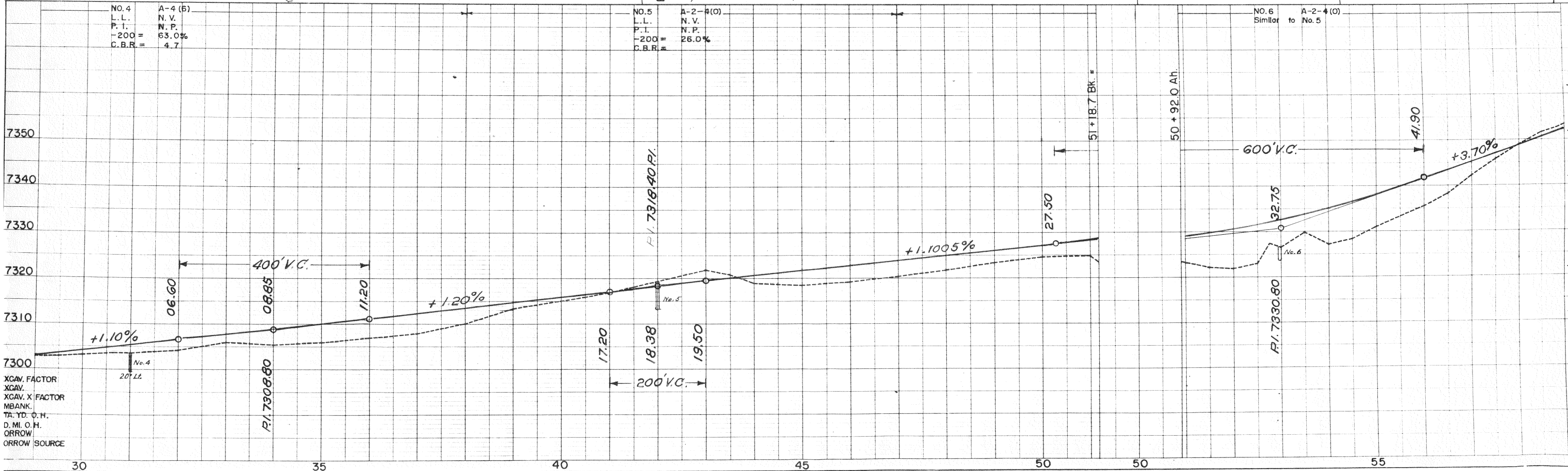
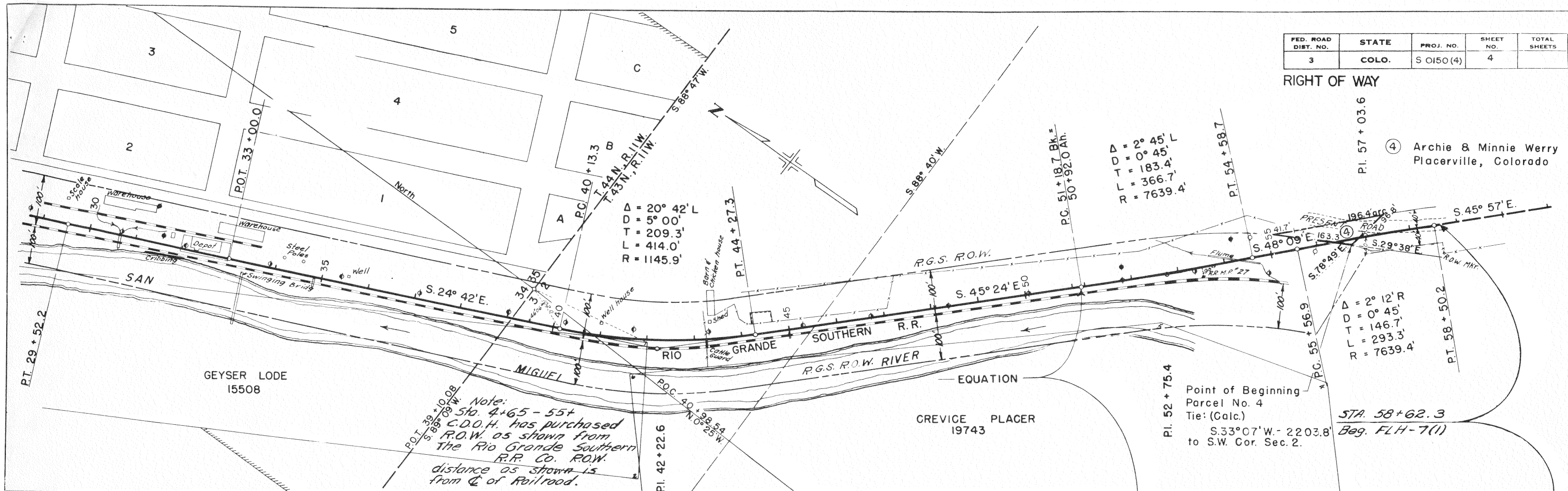


XCAV. FACTOR
XCAV.
XCAV. X FACTOR
MBANK.
TA. YD. O.H.
D. MI. O.H.
ORROW
ORROW SOURCE

FED. ROAD DIST. NO.	STATE	PROJ. NO.	SHEET NO.	TOTAL SHEETS
3	COLO.	S 0150 (4)	4	

RIGHT OF WAY

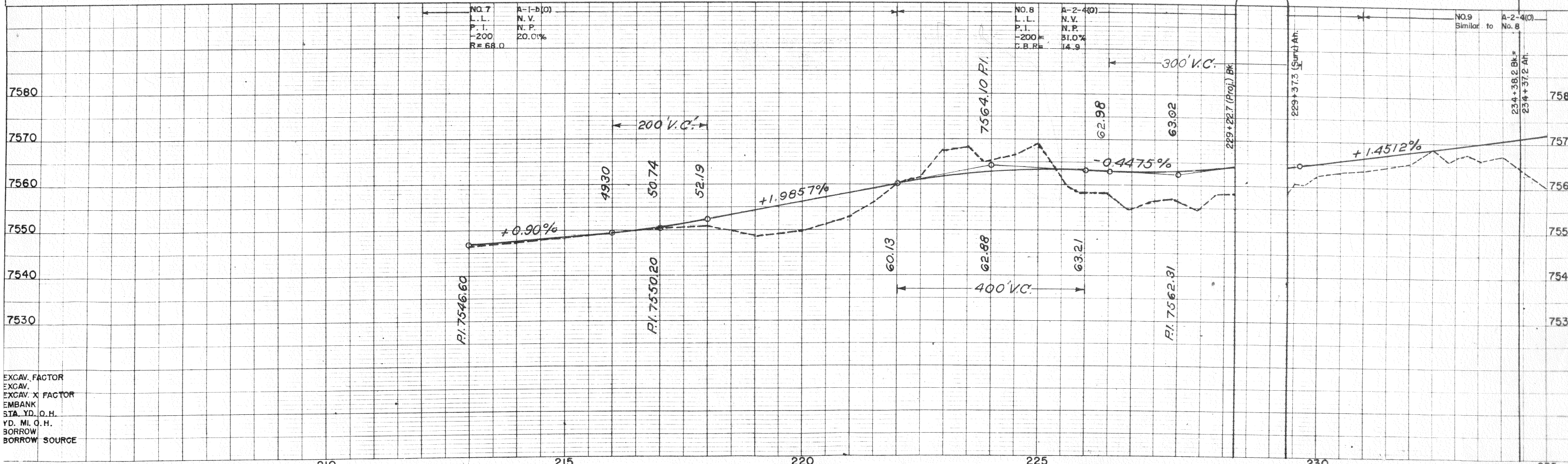
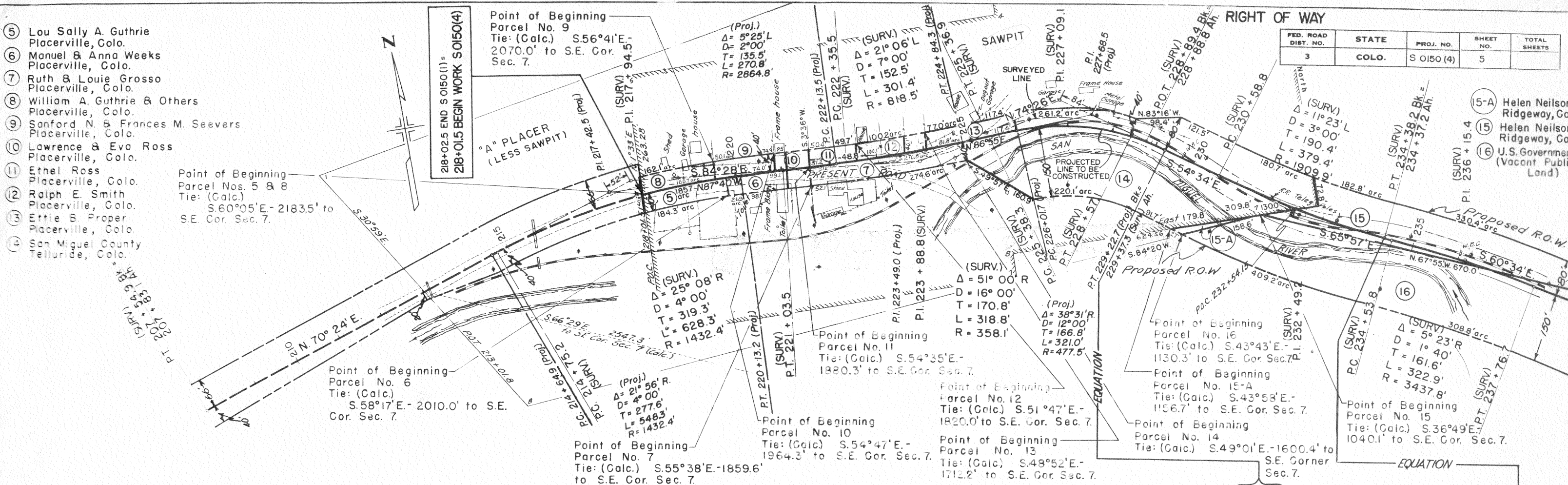
PI. 57 + 03.6
 (4) Archie & Minnie Werry
 Placerville, Colorado



- ⑤ Lou Sally A. Guthrie Placerville, Colo.
- ⑥ Manuel & Anna Weeks Placerville, Colo.
- ⑦ Ruth & Louie Grosso Placerville, Colo.
- ⑧ William A. Guthrie & Others Placerville, Colo.
- ⑨ Sanford N. & Frances M. SeEVERS Placerville, Colo.
- ⑩ Lawrence & Eva Ross Placerville, Colo.
- ⑪ Ethel Ross Placerville, Colo.
- ⑫ Ralph E. Smith Placerville, Colo.
- ⑬ Ettie B. Proper Placerville, Colo.
- ⑭ San Miguel County Telluride, Colo.

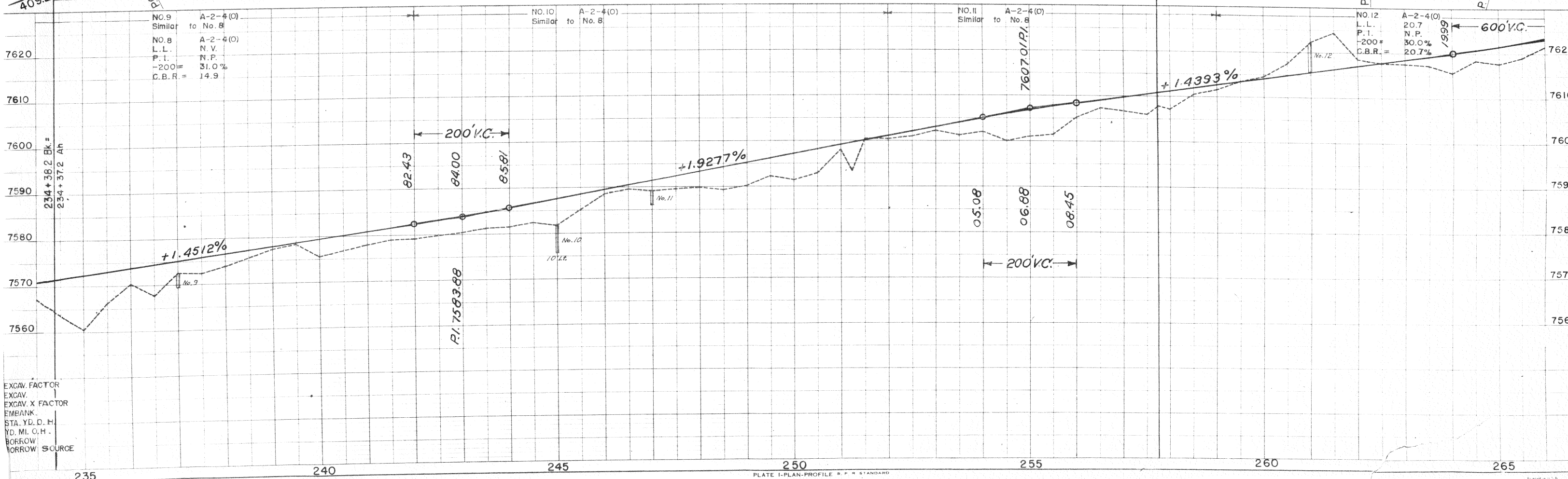
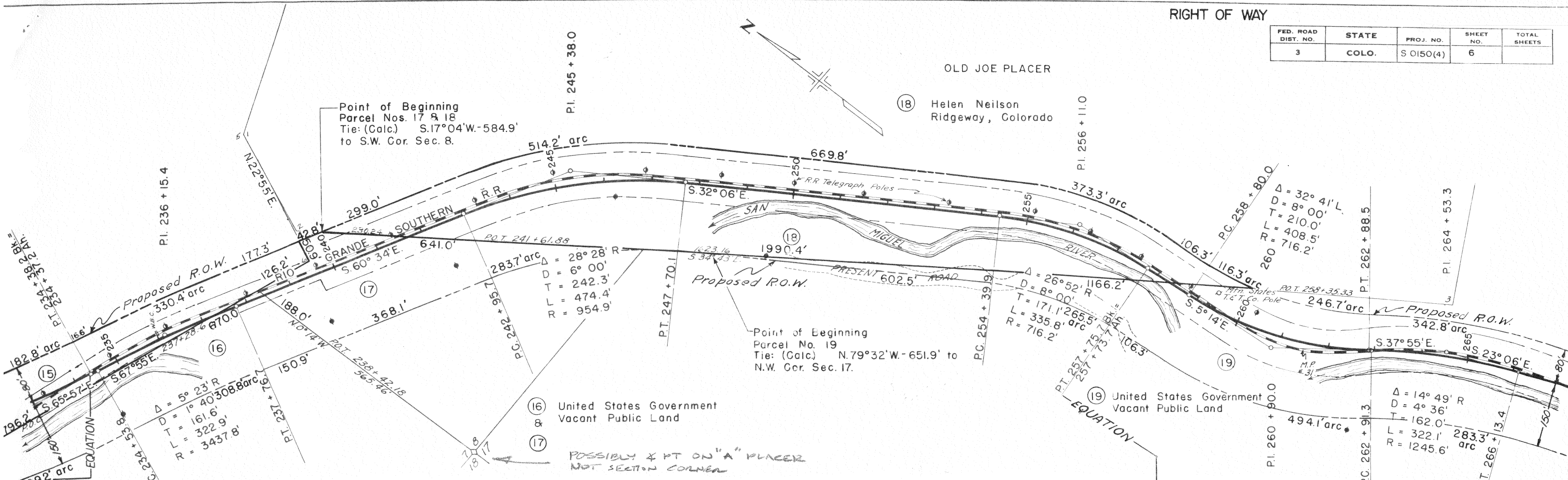
FED. ROAD DIST. NO.	STATE	PROJ. NO.	SHEET NO.	TOTAL SHEETS
3	COLO.	S O150 (4)	5	

- ⑮-A Helen Neilson Ridgeway, Co
- ⑮ Helen Neilson Ridgeway, Co
- ⑯ U.S. Government (Vacant Public Land)



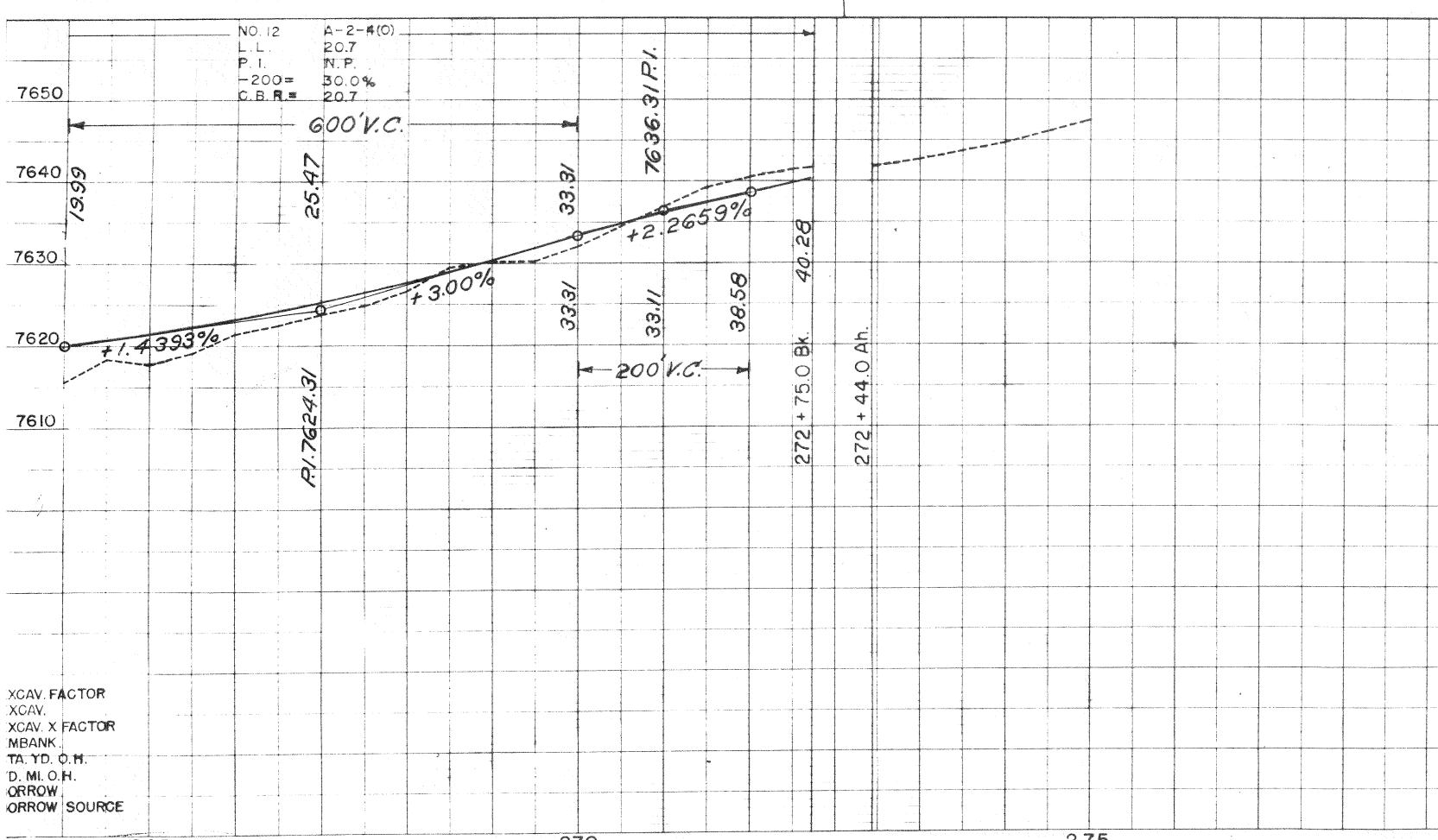
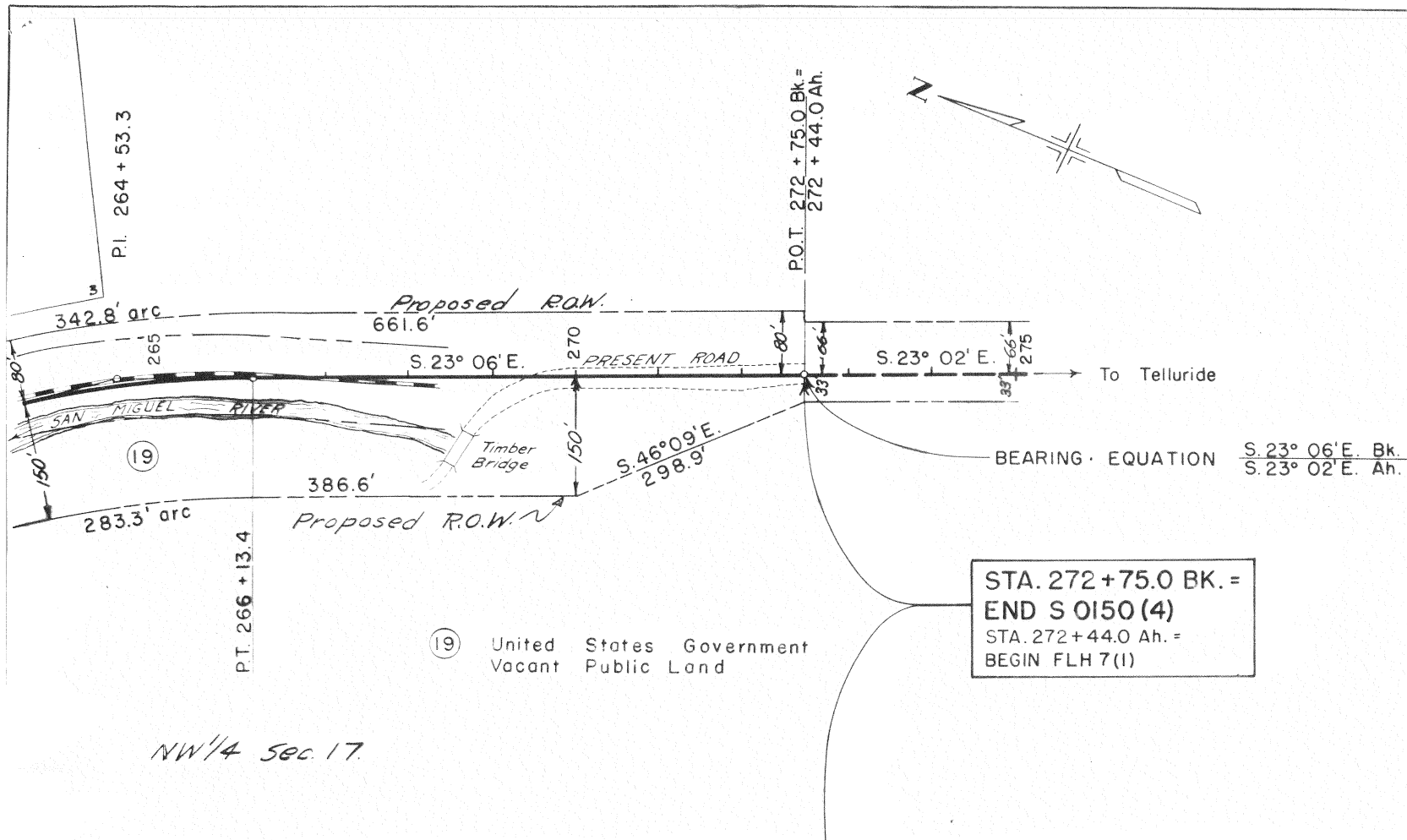
EXCAV. FACTOR
 EXCAV.
 EXCAV. X FACTOR
 EMBANK
 STA. YD. O.H.
 YD. MI. O.H.
 BORROW
 BORROW SOURCE

FED. ROAD DIST. NO.	STATE	PROJ. NO.	SHEET NO.	TOTAL SHEETS
3	COLO.	S 0150(4)	6	



RIGHT OF WAY

FED. ROAD DIST. NO.	STATE	PROJ. NO.	SHEET NO.	TOTAL SHEETS
3	COLO.	S 0150(4)	7	



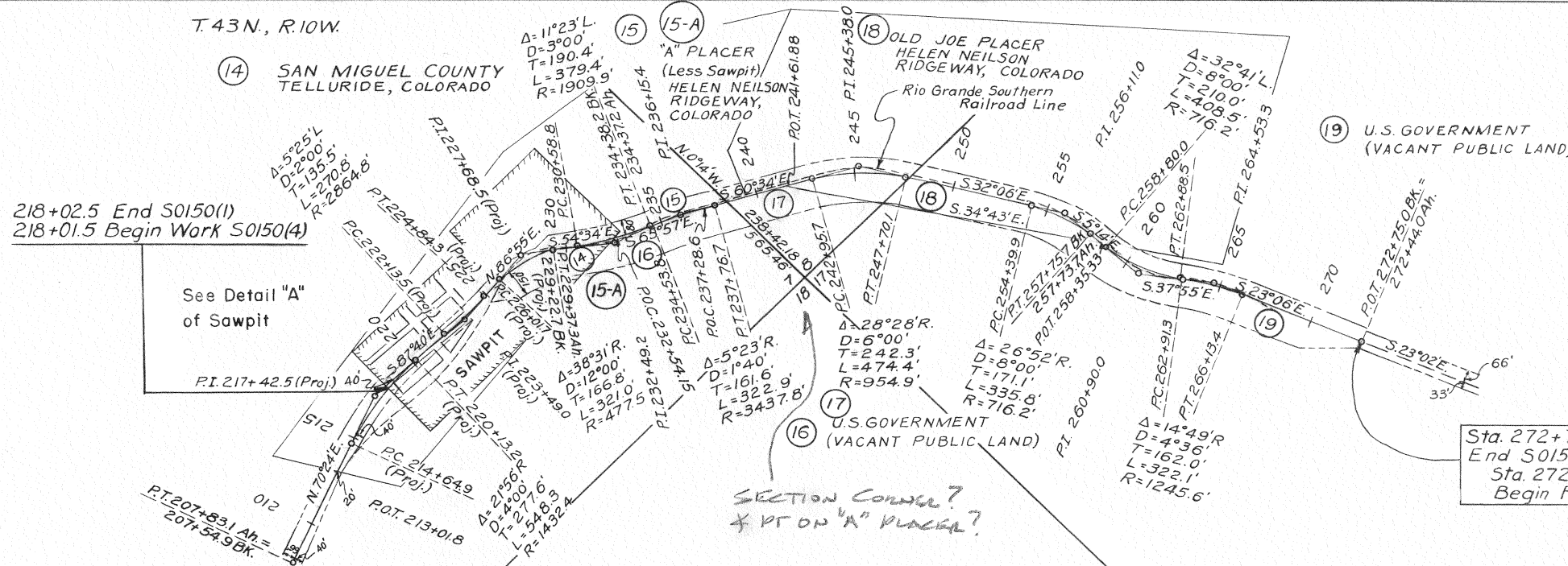
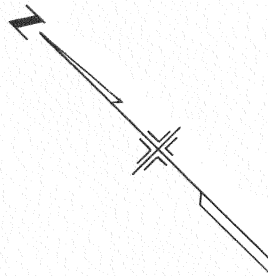
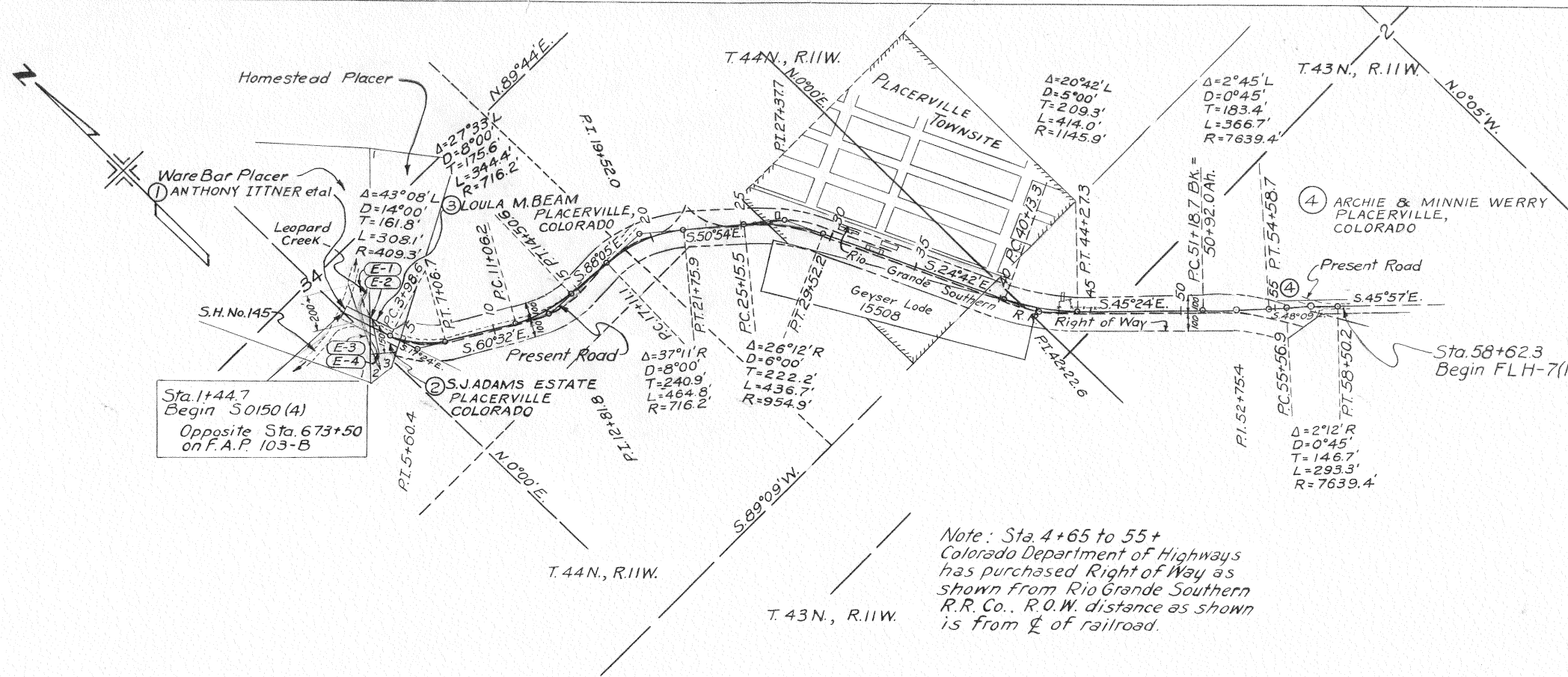
XCAV. FACTOR
 XCAV.
 XCAV. X FACTOR
 MBANK
 TA. YD. C.H.
 D. MI. O.H.
 ORROW
 ORROW SOURCE

FEDERAL ROAD DIVISION NO.	DISTRICT	PROJ. NO.	SHEET NO.	TOTAL SHEETS
9	COLORADO	S 0150(4)	8	

RIGHT OF WAY

OWNERSHIP MAP PLAT

SHOWING CLAIMANTS WITH REGARD TO RIGHT OF WAY FOR PROJECT S 0150(4). ORIGINAL SCALE 1"=400'



- (5) LOU SALLY A. GUTHRIE PLACERVILLE, COLORADO
- (6) MANUEL & ANNA WEEKS PLACERVILLE, COLORADO
- (7) RUTH & LOUIE GROSSO PLACERVILLE, COLORADO
- (8) WILLIAM A. GUTHRIE & OTHERS PLACERVILLE, COLORADO
- (9) SANFORD N. & FRANCES M. SEEVERS PLACERVILLE, COLORADO
- (10) LAWRENCE & EVA ROSS PLACERVILLE, COLORADO
- (11) ETHEL ROSS PLACERVILLE, COLO.
- (12) RALPH E. SMITH PLACERVILLE, COLORADO
- (13) ETTIE B. PROPER PLACERVILLE, COLORADO
- (14) SAN MIGUEL COUNTY TELLURIDE, COLORADO

Sta. 272+75.0 BK = End S0150(4)
Sta. 272+44.0 Ah. = Begin FLH 7(1)

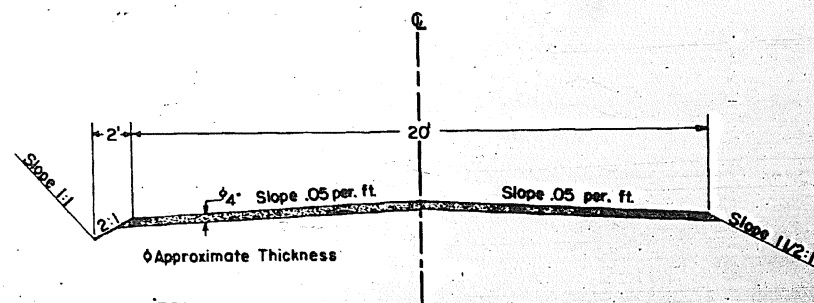
DETAIL "A"
ORIGINAL SCALE 1"=100'

FEDERAL ROAD DISTRICT NO.	DISTRICT	FILE NO.
1	COLORADO	S 0150

RIGHT OF WAY MARKERS

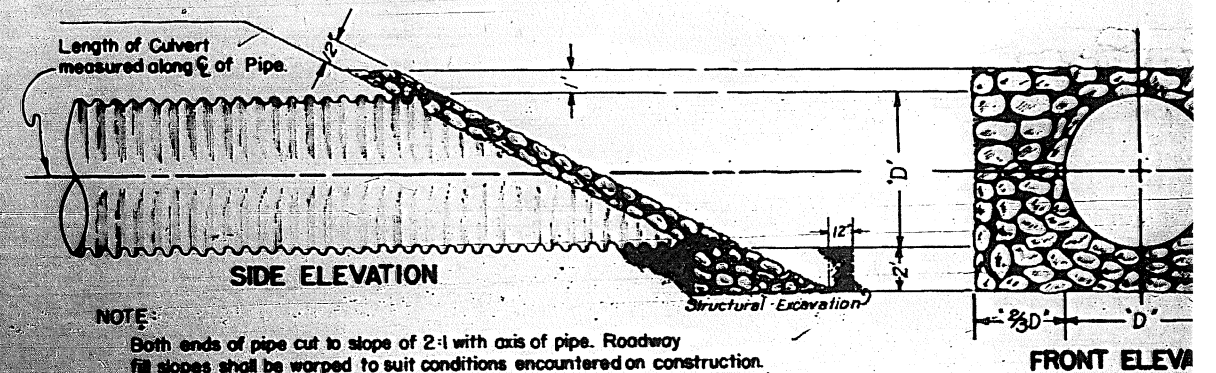
STATION	SIDE	NO.
7+00	Rt.	1
20+00	Lt.	1
33+50	Rt.	1
49+50	Lt.	1
231+00	Rt.	1
244+50	Lt.	1
257+50	Rt.	1
TOTALS		7

TYPICAL SECTION FOR DETOUR



NOTE:
 Approximate 4" compacted thickness of Detour Surfacing to be placed at the rate of 34 cu. yds. per 100 lin. ft. of roadway.
 It is estimated that Detour Surfacing is available from Material Pit No. 1.

**DETAIL OF SLOPE PAVING AND MITER FOR C.M.P. CULVERT
 STOCK PASS STA. 52+75**



NOTE:
 Both ends of pipe cut to slope of 2:1 with axis of pipe. Roadway fill slopes shall be warped to suit conditions encountered on construction.

TIMBER GUARD POSTS

STATION	SIDE	SPACING	NO.
1+94 - 2+33	Lt. & Rt.	Bridge	12
3+18 - 3+54	Lt. & Rt.	Bridge	12
3+99 - 9+69	Rt.	14° Curve	16
5+50	Lt.	Culvert	1
10+68 - 18+13	Rt.	8° Curve	13
25+50	Lt. & Rt.	Culvert	2
34+85	Lt. & Rt.	Culvert	2
40+00	Lt. & Rt.	Culvert	2
45+00	Lt. & Rt.	Culvert	2
52+75	Lt. & Rt.	Culvert	2
219+00	Lt. & Rt.	Culvert	2
223+10 - 229+75	Rt.	12° Curve	17
226+95	Lt.	Culvert	1
229+72	Lt.	Culvert	1
230+59 - 234+30	Rt.	3° Curve	8
234+50	Lt.	Culvert	1
235+04 - 243+33	Rt.	130° Curve	8
236+00	Lt.	Culvert	1
241+50	Lt.	Culvert	1
244+44 - 251+48	Rt.	6° Curve	12
245+00	Lt.	Culvert	1
251+25	Lt.	Culvert	1
252+82 - 258+29	Rt.	8° Curve	14
258+88 - 266+40	Rt.	8° Curve	16
259+	Lt.	Culvert	1
262+80	Lt.	Culvert	1
265+00	Lt.	Culvert	1
272+50	Lt. & Rt.	Culvert	2
TOTALS			153

FENCING REQUIREMENTS

STATION TO STATION	SIDE	REMOVE FENCE	REMOVE & REBUILD FENCE	BUILD CHAIN LINK FENCE	GATES	
		LIN. FT.	LIN. FT.	LIN. FT.	DOUBLE DRIVE	WALK
2+80 to 4+10	Rt.	140		360		
24+00 to 26+80	Lt.					
24+00	Lt.					
26+50	Lt.					
43+25	x	110				
43+50 to 47+30	Lt.	565				
55+70 to 58+60	Lt.		310			
218+20 to 220+00	Rt.	220				
220+40 to 220+90	Rt.	50				
219+10 to 220+90	Lt.	205				
221+60 to 223+60	Lt.	310				
224+00 to 225+00	Lt.	130				
228+00 to 229+60	Lt.	180				
TOTALS		1910	310	360	1	1

▲ To match school fence (Must be approved by Engineer)

**DETAIL OF HEAVY RIPRAP
 STA. 9+ to 12+ and STA. 17+ to 18+**

