

INDEX OF SHEETS
 SHEET NO. 1 TITLE SHEET and SKETCH MAP
 SHEET NO. 2 TABULATION OF PROPERTIES
 SHEET NO. 3-6 ALIGNMENT PLAN and PROFILE SHEETS
 SHOWING F.O.W. REQUIREMENTS.

*Do not
 Remove from
 ROW FILES*

COLORADO
DEPARTMENT OF HIGHWAYS
PLAN AND PROFILE OF PROPOSED
FEDERAL AID PROJECT NO. S 0153(10)
STATE HIGHWAY NO. 145
SAN MIGUEL COUNTY

SCALE OF ORIGINAL DRAWINGS
 ON PLAN, 1 IN. = 100 FT. HORIZONTAL
 ON PROFILES 1 IN. = 10 FT. VERTICAL
 GRADE LINE ON PROFILE IS SHOWN AS GRADE OF FINISHED ROAD
 NET LENGTH OF PROJECT

RIGHT OF WAY
 STA. 120+11.8 BK. (Pro.) = END S 0153(10)
 STA. 120+000 AH (Survey)

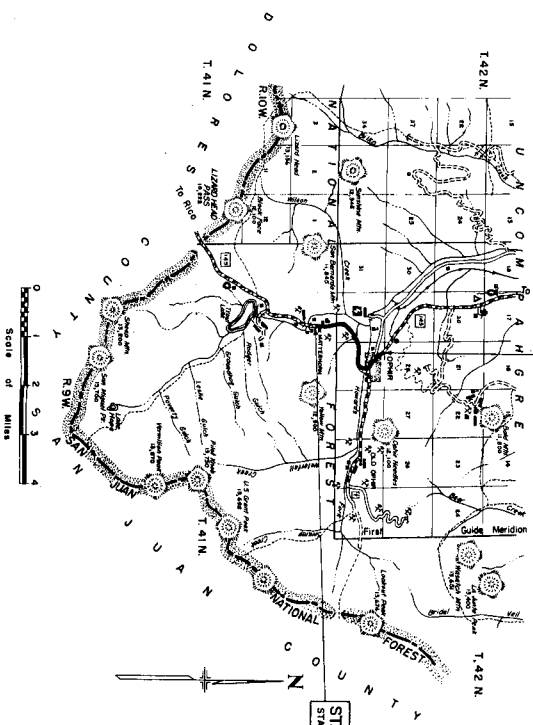
STA 0+00-BEGIN S 0153(10) =
 STA. 50+00 ON C.S. 0104-05

CONVENTIONAL SIGNS

RIGHT OF WAY LINE	1/2 MILE	1 MILE
CENTER LINE	1/2 MILE	1 MILE
COUNTY LINE	1/2 MILE	1 MILE
TOWNSHIP LINE	1/2 MILE	1 MILE
RANGE LINE	1/2 MILE	1 MILE
LAND LINES	1/2 MILE	1 MILE
RAILROAD	1/2 MILE	1 MILE
ROAD	1/2 MILE	1 MILE
POWER LINE	1/2 MILE	1 MILE
TELEPHONE & TELEGRAPH LINES	1/2 MILE	1 MILE
SECTION	1/2 MILE	1 MILE
PRESERVE ROAD (Pine Shave)	1/2 MILE	1 MILE

RIGHT OF WAY

FEDERAL AID PROJECT NO.	STATE HIGHWAY NO.	SECTION
S 0153(10)	145	1



R. O. W. TABULATION OF PROPERTIES IN SAN MIGUEL COUNTY S. H. NO. 145 PROJ. S0153(10)

SECTION	DISTRICT	RANGE	TOWNSHIP
1	5053(10)	2	2

RIGHT OF WAY

PARCEL NO.	OWNER	ADDRESS	LOCATION	AREA IN ACRES		REMARKS
				PARCEL	TO BE ACQUIRED	
1	PARAGON MINES, INC.	66 Dr. Norton, Battlement, Montrose, Colo.	T.41N., R.9W., N.12E., N.E. 1/4 Sec 5	0.320	0.155	LAME PLACER CLAIM, T301
2	MONARCH MINING CO	2200. Orchard St., Milwaukee, Wisconsin	T.42N., R.9W., N.12E., S.E. 1/4 Sec 32.	3.489	2.442	IDA. NO 2, 12416, BURKETE, 6019, BALM OF GILEAD, 12416.
3	WESTERN COLORADO POWER CO	Durango, Colorado	N.W. 1/4 Sec 33.	1.893	1.251	ROANOAK CLAIM, 18590
4	SILVER BELLE MINES, INC.	633. Garrothy Bldg., Denver 2, Colo.	N.W. 1/4 Sec 33	1.075	0.653	SILVER BELLE NO. 10
5	SILVER BELLE MINES, INC.			0.020	0.020	SILVER BELLE NO. 8
6	SILVER BELLE MINES, INC.			0.424	0.424	SILVER BELLE MILL SITE
7	SILVER BELLE MINES, INC.			4.340	3.376	LOOPTON CLAIM, 14048
8	SILVER BELLE MINES, INC.			0.046	0.046	MUGGINS CLAIM, 8603A

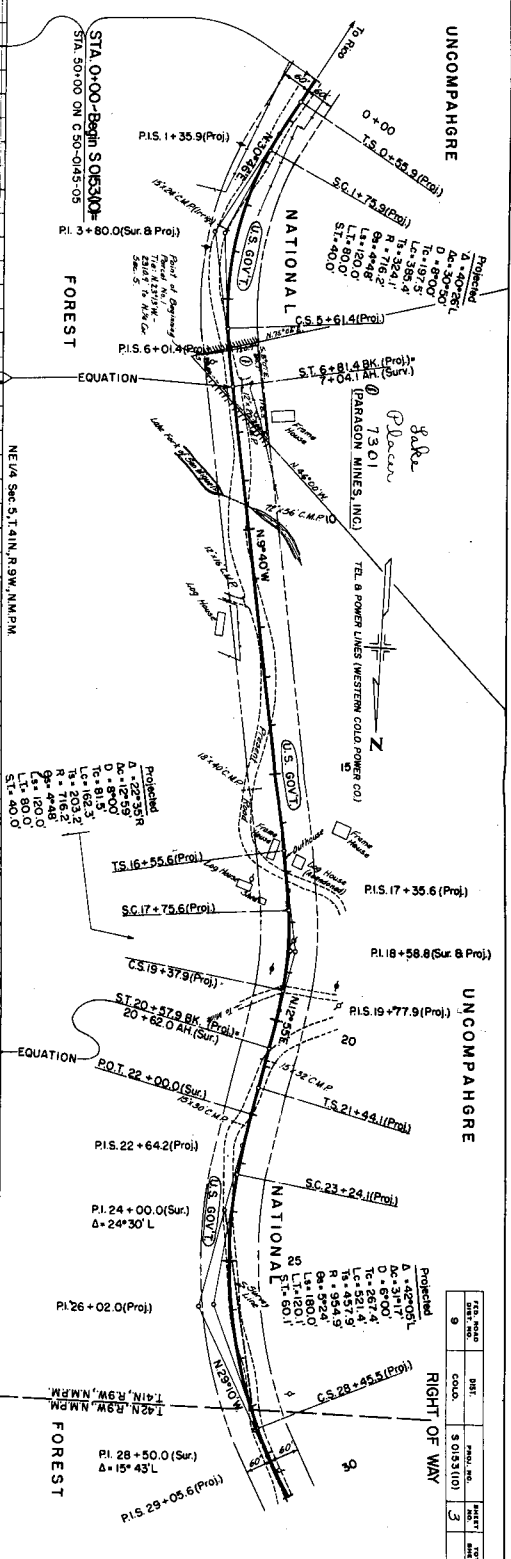
NOTE: ALL RIGHT OF WAY NOT LOCATED ON ABOVE LISTED MINING CLAIMS IS LOCATED ON UNITED STATES GOVERNMENT LANDS IN THE UNDOMINATED NATIONAL FOREST

UNCOMPAGHRE

UNCOMPAGHRE

RIGHT OF WAY

FILE NO.	BET.	TOTAL AC.	ACRES
9	COLO.	5 013 310	3



STA. 0+00 - BEGIN SECTION
 STA. 50+00 ON C-50-0145-05

NE 1/4 Sec 2, T. 41N, R. 9W, N.M.P.M.

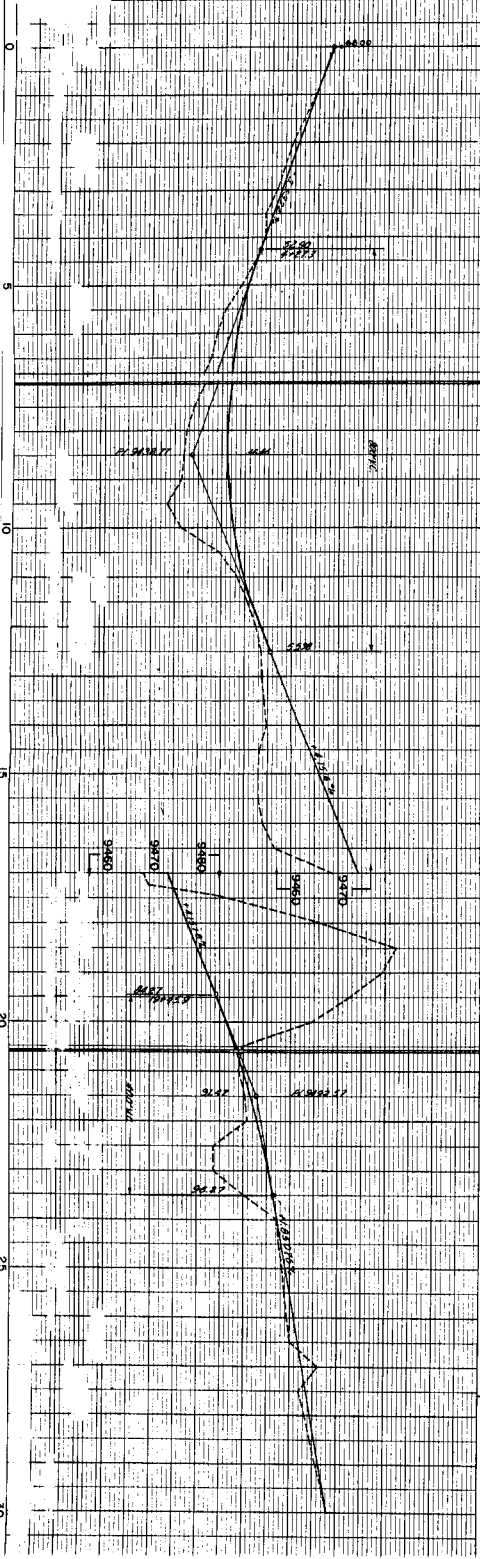
1/4 Sec 2, T. 41N, R. 9W, N.M.P.M.

FOREST

FOREST

FOREST

FOREST



1/4 Sec 2, T. 41N, R. 9W, N.M.P.M.

FOREST

FOREST

FOREST

FOREST

FOREST

FOREST

FOREST

FOREST

FOREST

FOREST

FOREST

FOREST

FOREST

FOREST

FOREST

FOREST

FOREST

FOREST

FOREST

FOREST

FOREST

Proposed
 Δ = 40'05"
 Δ = 31'17"
 D = 67'00"
 L = 667.4'
 R = 457.9'
 L = 457.9'
 R = 454.9'
 L = 1201.1'
 ST = 60.1'

Proposed
 Δ = 27'35.8"
 Δ = 12'59"
 D = 87'00"
 L = 815.3'
 R = 203.2'
 L = 418.8'
 L = 800.0'
 ST = 40.0'

Proposed
 Δ = 40'05"
 Δ = 31'17"
 D = 67'00"
 L = 667.4'
 R = 457.9'
 L = 457.9'
 R = 454.9'
 L = 1201.1'
 ST = 60.1'

Proposed
 Δ = 40'05"
 Δ = 31'17"
 D = 67'00"
 L = 667.4'
 R = 457.9'
 L = 457.9'
 R = 454.9'
 L = 1201.1'
 ST = 60.1'

Proposed
 Δ = 40'05"
 Δ = 31'17"
 D = 67'00"
 L = 667.4'
 R = 457.9'
 L = 457.9'
 R = 454.9'
 L = 1201.1'
 ST = 60.1'

Proposed
 Δ = 40'05"
 Δ = 31'17"
 D = 67'00"
 L = 667.4'
 R = 457.9'
 L = 457.9'
 R = 454.9'
 L = 1201.1'
 ST = 60.1'

Proposed
 Δ = 40'05"
 Δ = 31'17"
 D = 67'00"
 L = 667.4'
 R = 457.9'
 L = 457.9'
 R = 454.9'
 L = 1201.1'
 ST = 60.1'

Proposed
 Δ = 40'05"
 Δ = 31'17"
 D = 67'00"
 L = 667.4'
 R = 457.9'
 L = 457.9'
 R = 454.9'
 L = 1201.1'
 ST = 60.1'

Proposed
 Δ = 40'05"
 Δ = 31'17"
 D = 67'00"
 L = 667.4'
 R = 457.9'
 L = 457.9'
 R = 454.9'
 L = 1201.1'
 ST = 60.1'

Proposed
 Δ = 40'05"
 Δ = 31'17"
 D = 67'00"
 L = 667.4'
 R = 457.9'
 L = 457.9'
 R = 454.9'
 L = 1201.1'
 ST = 60.1'

Proposed
 Δ = 40'05"
 Δ = 31'17"
 D = 67'00"
 L = 667.4'
 R = 457.9'
 L = 457.9'
 R = 454.9'
 L = 1201.1'
 ST = 60.1'

Proposed
 Δ = 40'05"
 Δ = 31'17"
 D = 67'00"
 L = 667.4'
 R = 457.9'
 L = 457.9'
 R = 454.9'
 L = 1201.1'
 ST = 60.1'

Proposed
 Δ = 40'05"
 Δ = 31'17"
 D = 67'00"
 L = 667.4'
 R = 457.9'
 L = 457.9'
 R = 454.9'
 L = 1201.1'
 ST = 60.1'

Proposed
 Δ = 40'05"
 Δ = 31'17"
 D = 67'00"
 L = 667.4'
 R = 457.9'
 L = 457.9'
 R = 454.9'
 L = 1201.1'
 ST = 60.1'

Proposed
 Δ = 40'05"
 Δ = 31'17"
 D = 67'00"
 L = 667.4'
 R = 457.9'
 L = 457.9'
 R = 454.9'
 L = 1201.1'
 ST = 60.1'

Proposed
 Δ = 40'05"
 Δ = 31'17"
 D = 67'00"
 L = 667.4'
 R = 457.9'
 L = 457.9'
 R = 454.9'
 L = 1201.1'
 ST = 60.1'

Proposed
 Δ = 40'05"
 Δ = 31'17"
 D = 67'00"
 L = 667.4'
 R = 457.9'
 L = 457.9'
 R = 454.9'
 L = 1201.1'
 ST = 60.1'

Proposed
 Δ = 40'05"
 Δ = 31'17"
 D = 67'00"
 L = 667.4'
 R = 457.9'
 L = 457.9'
 R = 454.9'
 L = 1201.1'
 ST = 60.1'

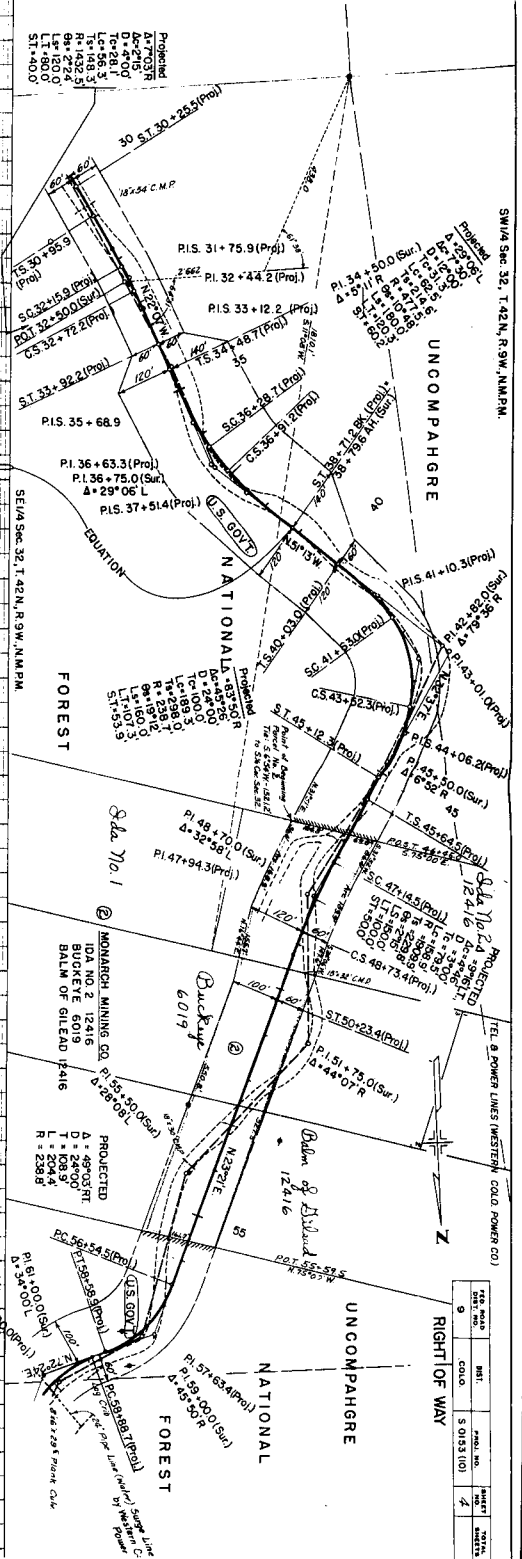
Proposed
 Δ = 40'05"
 Δ = 31'17"
 D = 67'00"
 L = 667.4'
 R = 457.9'
 L = 457.9'
 R = 454.9'
 L = 1201.1'
 ST = 60.1'

SW 1/4 Sec 32, T.42N, R.9W, N.M.P.M.

UNCOMPAGHRE

RIGHT OF WAY

FILE NO.	REV.	DATE	BY	CHKD.
9		5 0153 (0)		4

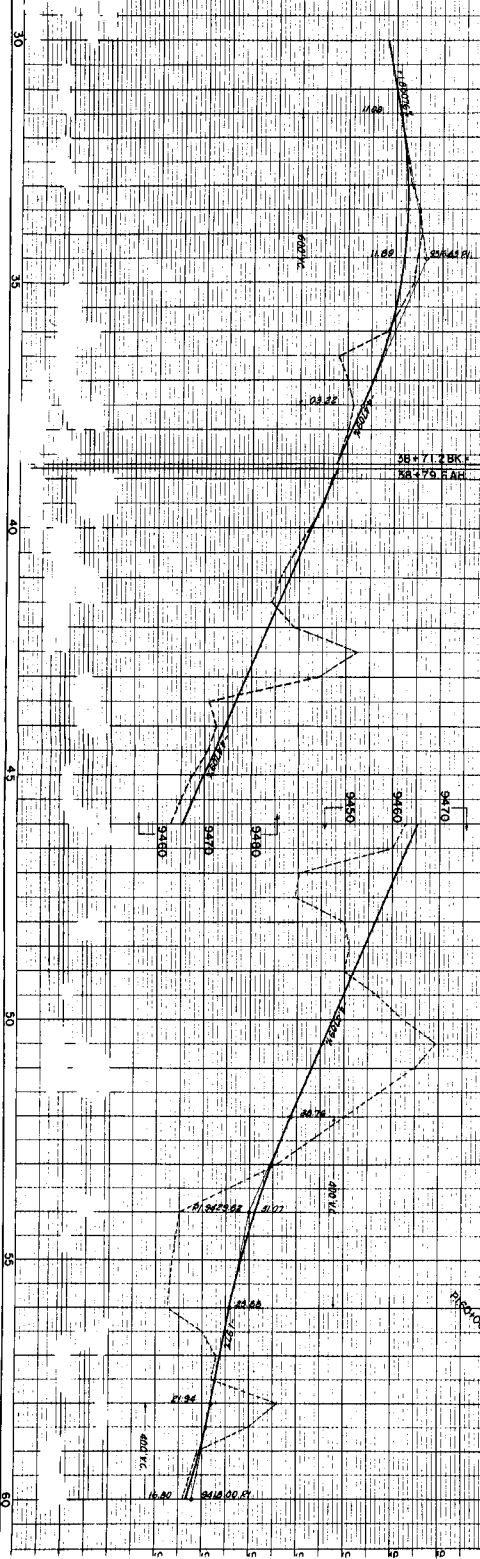


PROPOSED
 A=74.00'
 D=75.00'
 T=102.93'
 L=1492.50'
 L=1800'
 ST=400'

SE 1/4 Sec 32, T.42N, R.9W, N.M.P.M.

MONARCH MINING CO.
 IDA NO. 2 12416
 BUCKEYE 6019
 BALM OF GILEAD 15416

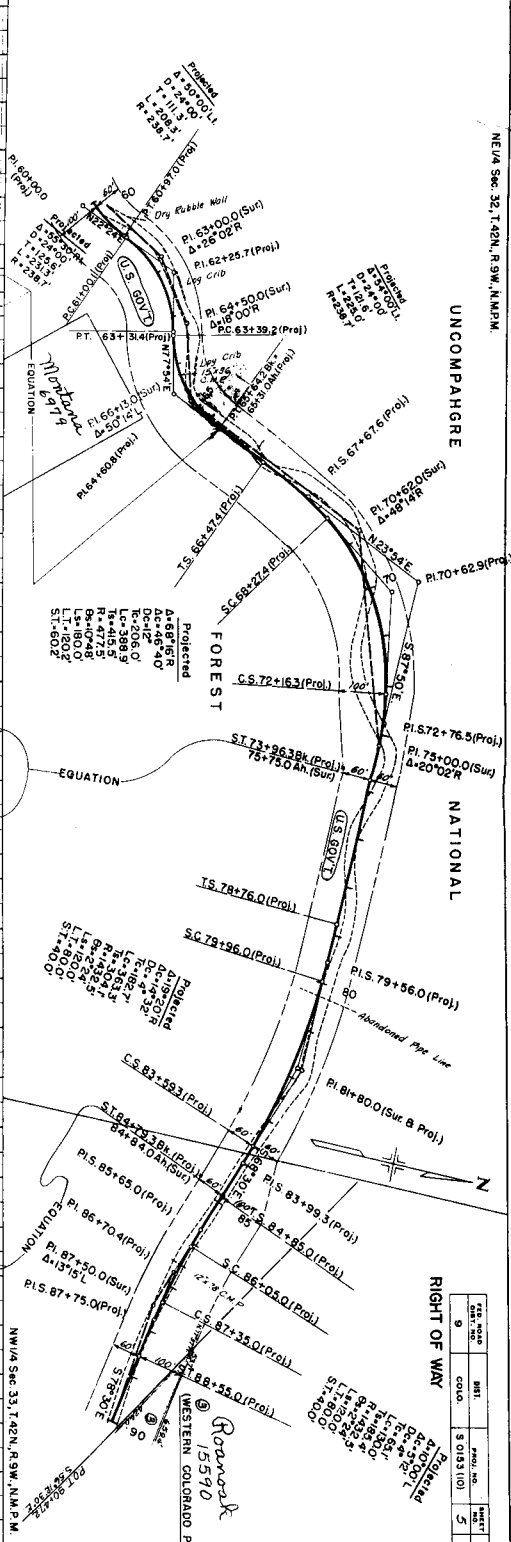
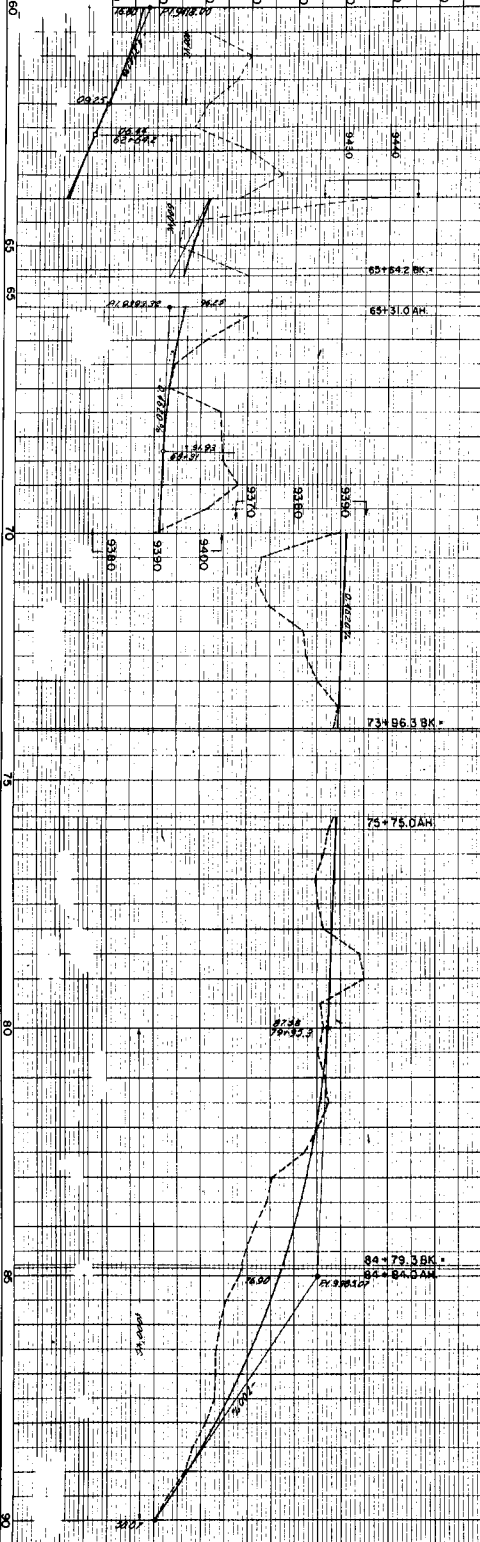
PROJECTED
 A=585.00'
 D=2500'
 T=1028.9'
 L=2034.4'
 L=2389'



UNCOMPARED

NATIONAL

RIGHT OF WAY



NW 1/4 Sec. 33, T. 42N, R. 9W, N.M.P.M.

