

FED. ROAD DIST. NO.	STATE	PROJ. NO.	SHEET NO.	TOTAL SHEETS
3	COLO.	S 46 (5)	1	

6/23/66 Rev. Proj. No. E.C.M.

INDEX OF SHEETS

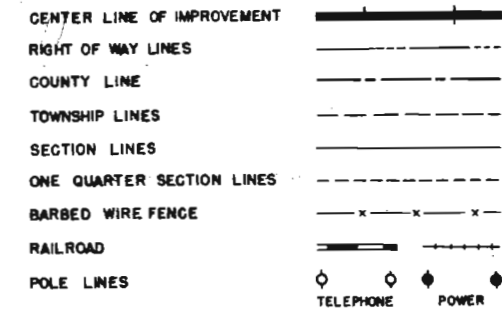
SHEET NO. 1 SKETCH MAP & TITLE PAGE.
 2 TABULATION OF PROPERTIES.
 3-5 ALIGNMENT PLAN & PROFILE.

COLORADO

STATE HIGHWAY DEPARTMENT

PLAN AND PROFILE OF PROPOSED FEDERAL AID SECONDARY PROJECT NO. S 46 (5) STATE HIGHWAY NO. 96 CROWLEY, OTERO, KIOWA COUNTIES

CONVENTIONAL SIGNS.

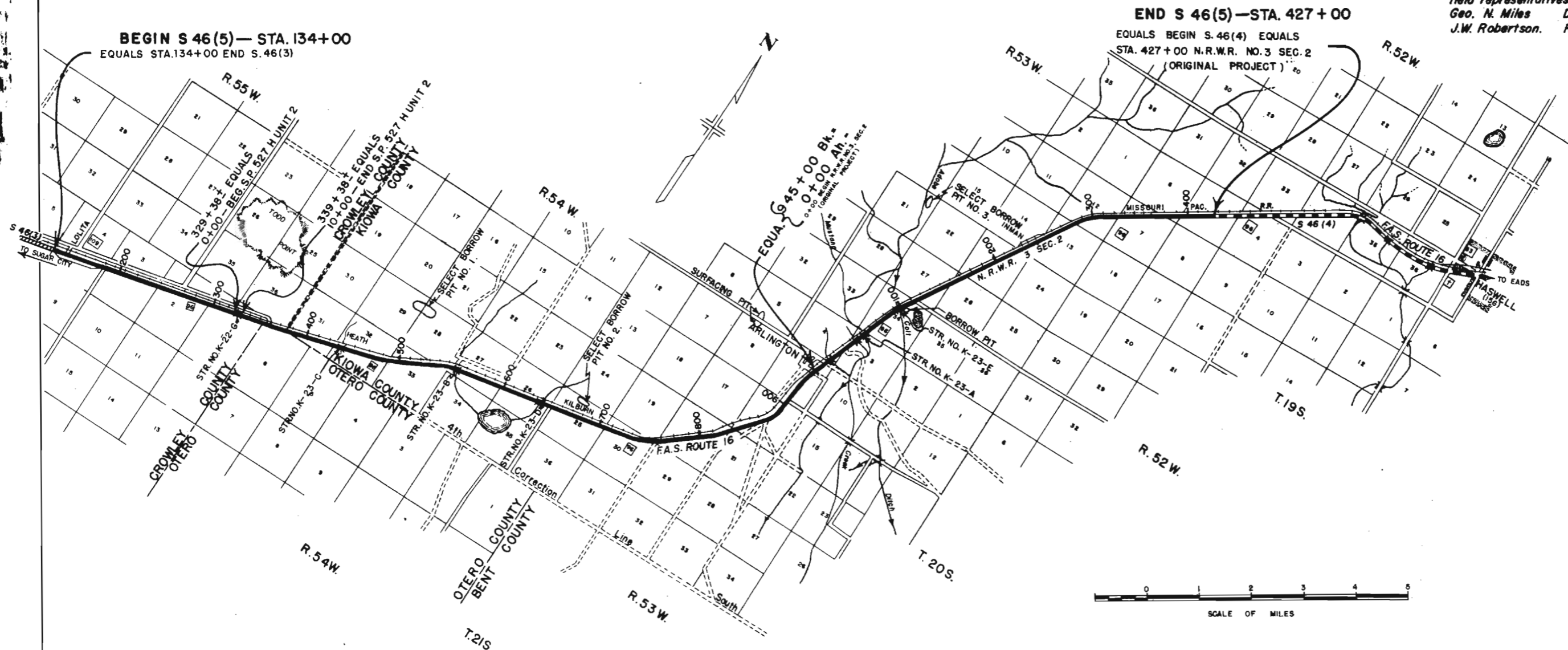


SCALES OF ORIGINAL TRACINGS

ON PLAN, 1 IN. = 100 FT.
 ON PROFILE 1 IN. = 100 FT. HORIZONTAL
 1 IN. = 10 FT. VERTICAL
 GRADE LINE ON PROFILE IS SHOWN AS GRADE OF FINISHED ROAD
 GROSS LENGTH OF PROJECT 123,704.7 FT. = 23.428 MI.
 NET LENGTH OF PROJECT 123,352.9 FT. = 23.362 MI.

RIGHT OF WAY

NOTE:
 It is recommended that bidders on this Project go over the plan details with one of the following field representatives of this Department.
 Geo. N. Miles Division Engineer Pueblo, Colo.
 J.W. Robertson. Resident Engineer Orday, Colo.



RECOMMENDED FOR APPROVAL

ASSISTANT ENGINEER _____ DATE _____

APPROVED

STATE HIGHWAY ENGINEER _____ DATE _____

RECOMMENDED FOR APPROVAL DATE _____

DISTRICT ENGINEER
 PUBLIC ROADS ADMINISTRATION
 FEDERAL WORKS AGENCY

APPROVED _____ DATE _____

DIVISION ENGINEER
 PUBLIC ROADS ADMINISTRATION
 FEDERAL WORKS AGENCY

NOTE:

Alignment and Grades as shown are subject to modification during construction after approval by the Denver Office.

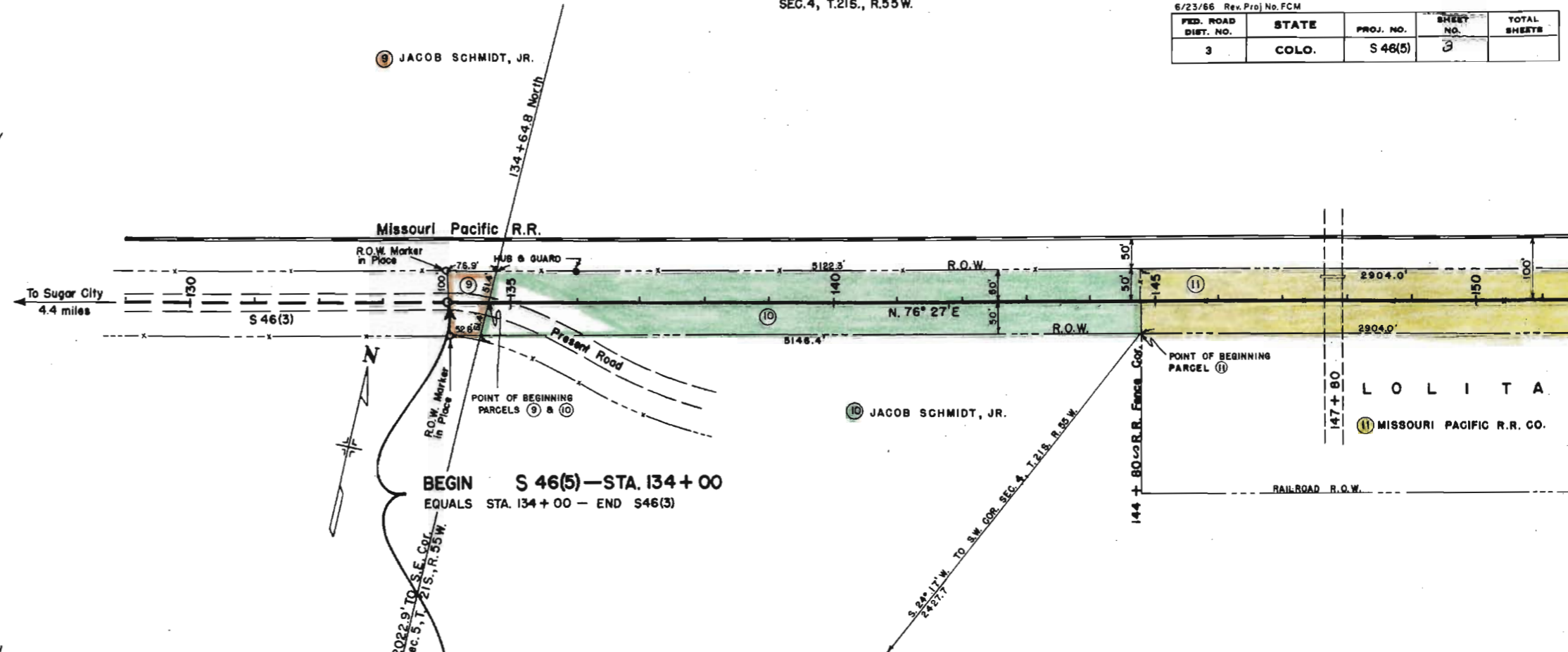
The soil data shown on the plans is obtained from the best available testing laboratory information. This information is shown for the convenience of the Contractor and the Department does not guarantee the accuracy of these tests. If materials not conforming to the data on plans are encountered during construction, necessary modifications of the grading plan shown on plans will be made to secure dense, stable embankments.

Select Borrow and Surfacing Requirements are shown on Sheet No. 4 of Plans.

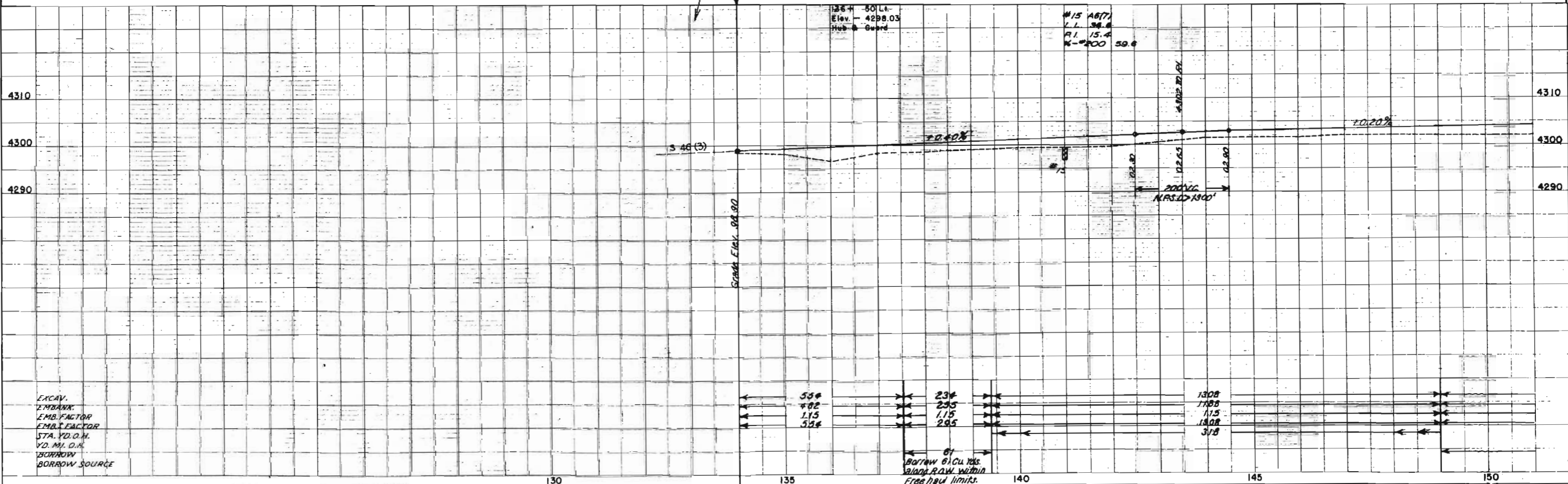
SEC. 4, T. 21 S., R. 55 W.

6/23/66 Rev. Proj. No. FCM

FED. ROAD DIST. NO.	STATE	PROJ. NO.	SHEET NO.	TOTAL SHEETS
3	COLO.	S 46(5)	3	



S.E. 1/4 SEC. 5, T. 21 S., R. 55 W.



PLAN	DATE
DESIGNED	
PLOTTED	
CHECKED	
BY	

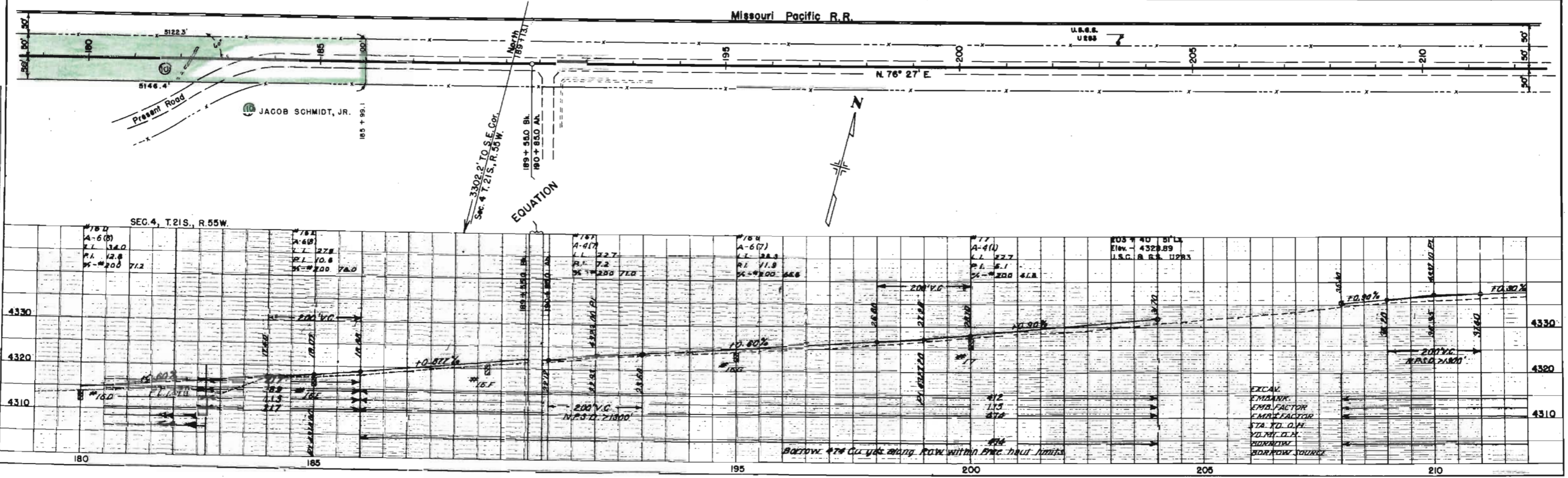
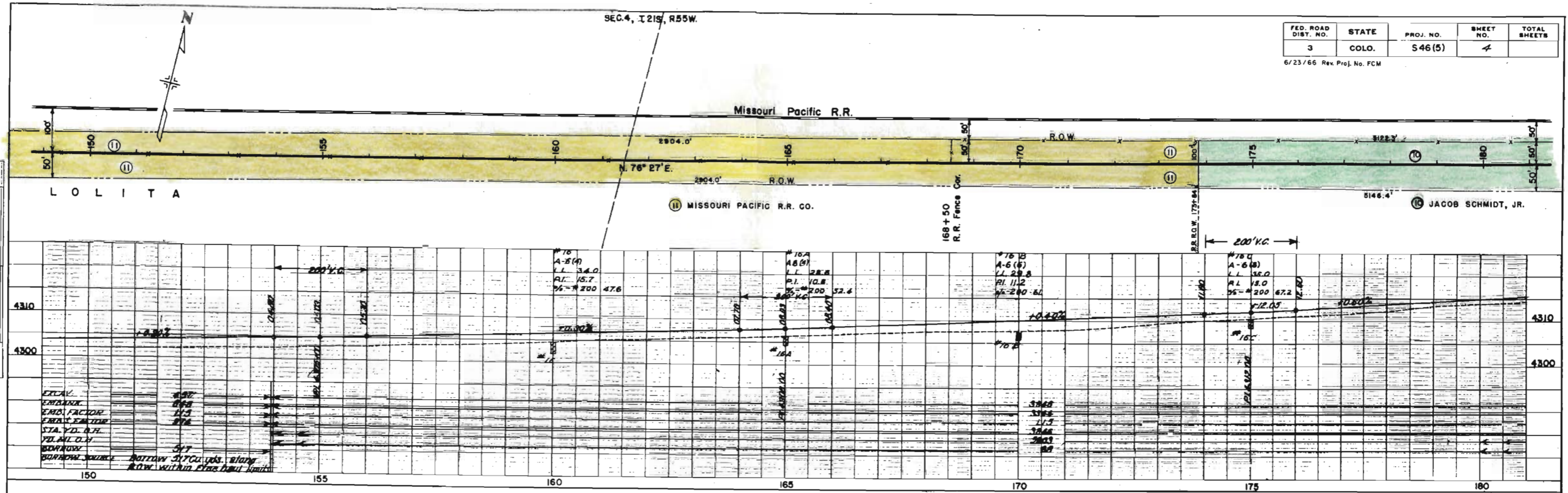
PROFILE	DATE
DESIGNED	
PLOTTED	
CHECKED	
BY	

FED. ROAD DIST. NO.	STATE	PROJ. NO.	SHEET NO.	TOTAL SHEETS
3	COLO.	546(5)	4	

6/23/66 Rev. Proj. No. FCM

PLAN	DATE
BY	
CHECKED	
APPROVED	
NOTE BOOK	
NO.	

PROFILE	DATE
BY	
CHECKED	
APPROVED	
NOTE BOOK	
NO.	



N.E. 1/4 SEC. 9, T. 20 S., R. 53 W.

NE 1/4, SEC. 9
T. 20 S. R. 53 W.

FED. ROAD DIST. NO.	STATE	PROJ. NO.	SHEET NO.	TOTAL SHEETS
3	COLO.	S46(5)	5	

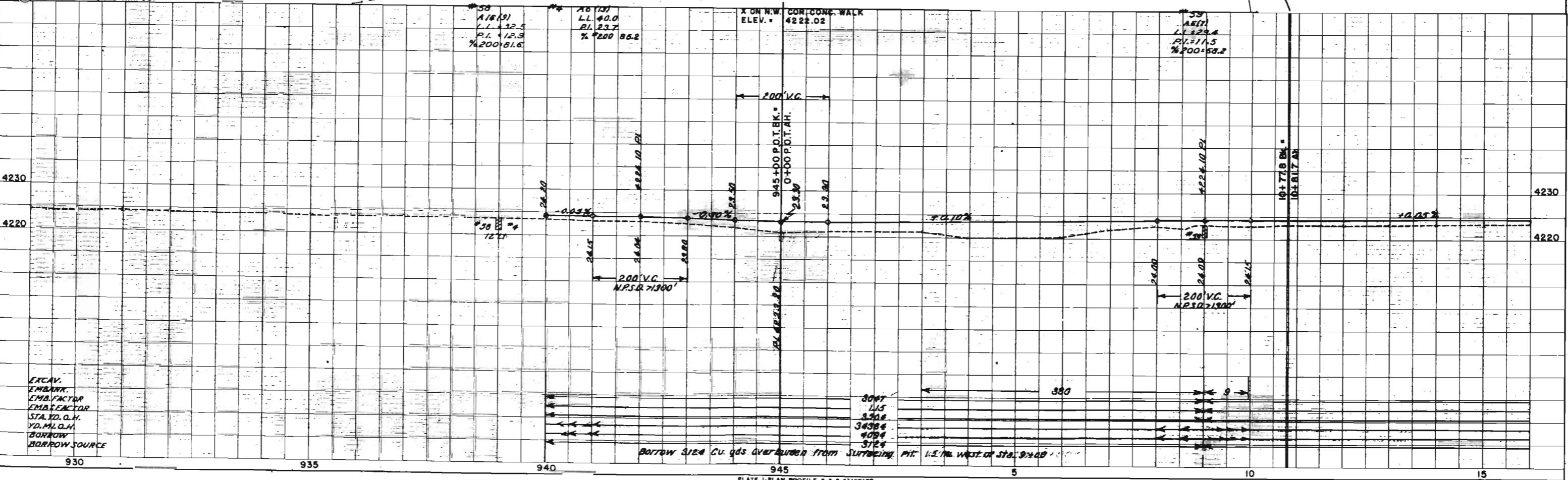
6/23/66 Rev. Proj. No. FCM.

PLAN	DATE	BY
REVISED		
PLATTED		
NOTE BOOK		
BY		



- 1 J.E. BUNCE & ETTA BUNCE
- 2 J.E. BUNCE & ETTA BUNCE
- 3 MARK R. CLAY
- 4 CLARA ELIZABETH STOKER & JESSIE F. BROMELL
- 5 GEORGE M. BOBST
- 6 CLARA ELIZABETH STOKER & JESSIE F. BROMELL
- 7 CLARA ELIZABETH STOKER & JESSIE F. BROMELL
- 8 MISSOURI PACIFIC R.R. CO.

PROFILE	DATE	BY
REVISED		
PLATTED		
NOTE BOOK		
BY		



EXCAV.
EMBANK.
EMB. FACTOR
STA. TO O.H.
Y.D. M.G.H.
BORROW
BORROW SOURCE

PLATE I-PLAN-PROFILE S. P. A. STANDARD
LIGHT INSTRUMENT CO. Chicago, Ill. U.S.A.