

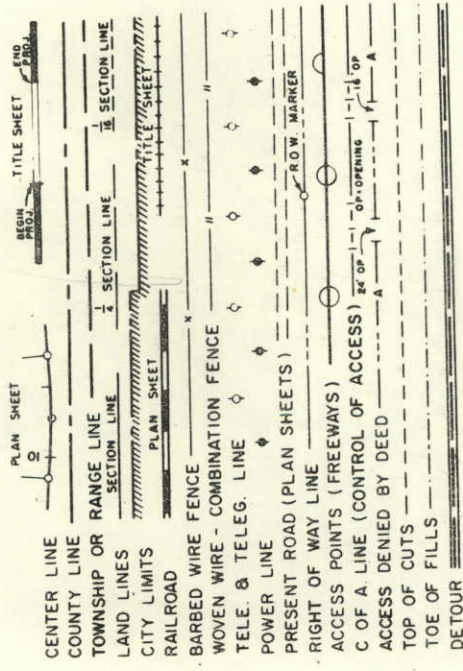
DEPARTMENT OF HIGHWAYS STATE OF COLORADO

RIGHT OF WAY PLAN OF PROPOSED
FEDERAL AID PROJECT NO. U 006-1(33)
STATE HIGHWAY NO. 3
WELD COUNTY
RIGHT OF WAY

INFORMATION OBTAINED FROM AVAILABLE COUNTY RECORDS

SCALE OF ORIGINAL DRAWING
ON PLAN, 1" = 100'
LENGTH OF PROJECT = 0.065 MILES (R.O.W.)

CONVENTIONAL SIGNS



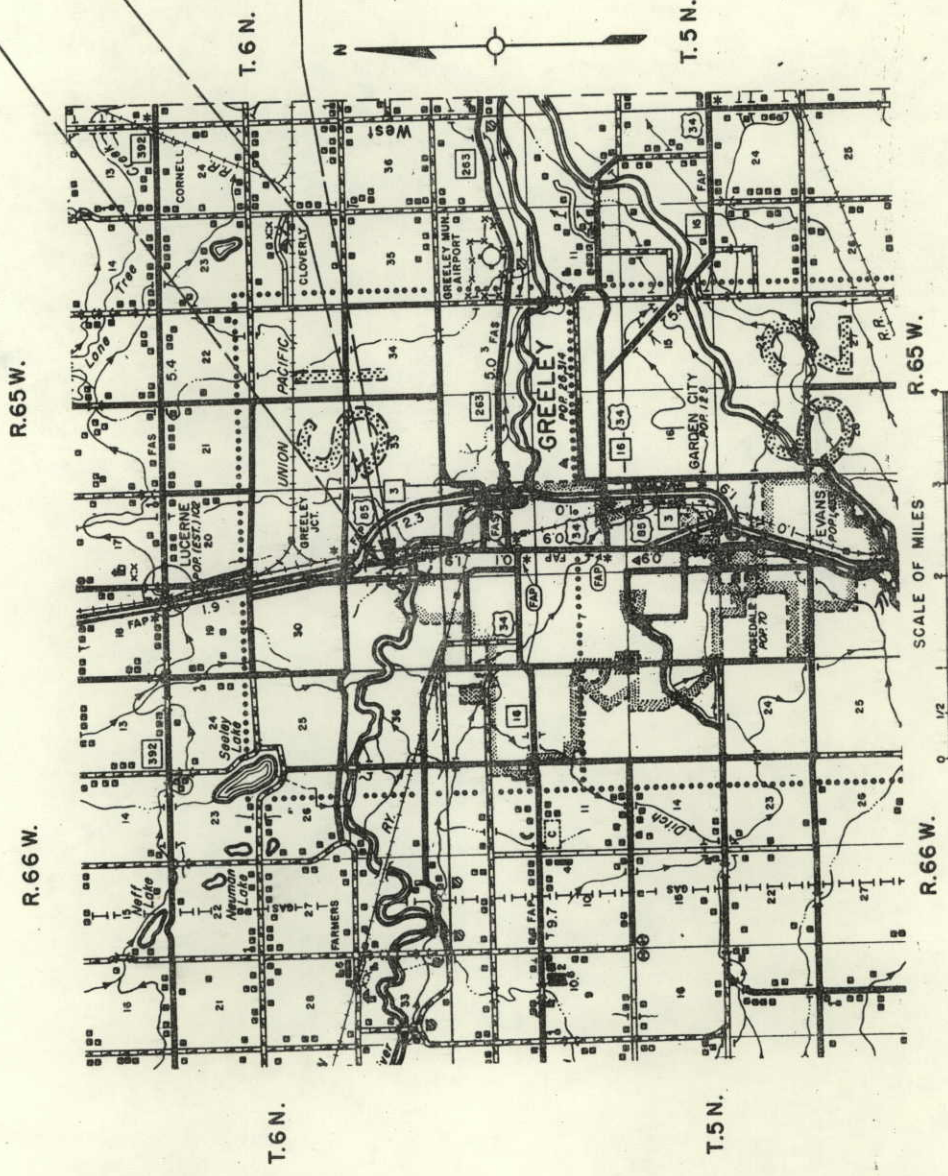
INDEX OF SHEETS

SHEET NO.	TITLE SHEET	TABULATION OF PROPERTIES	PLAN & PROFILE
1			
2			
3 & 4			

STA. 296+16.7 END U 006-1(33) =
STA. 53+50 "O" LINE ON U 006-1(26)

STA. 283+72.4 END R.O.W.
U 006-1(33)

STA. 280+29.8 BEGIN R.O.W.
U-006-1(33)



FEDERAL ROAD DISTRICT NO.	9	DIVISION	COLORADO	PROJECT NO.	U 006-1(33)	SHEET NO.	1
RIGHT OF WAY						REVISIONS	
GREELEY - NORTH							

REG. ROAD REG. NO.	DIVISION	PROJECT NO.	SHEET NO.
9	COLO.	U 006 - 1 (33)	3

RIGHT OF WAY
GREELEY - NORTH

N.W. 1/4 Sec. 32
T.6 N., R.63 W.

H.F. MARKUS
1700 15TH AVE.
GREELEY, COLO.

2 JOHN ELLS JR.
722 N. 11TH AVE.
GREELEY, COLO.
352-7660

Point Of Beginning, Parcels 1 & 2
S.76°00'30"W, 910.9 To W & Cor. Sec. 32
Ls = 200
D = 13'28".30
Ts = 269'2".00

N.28°39' W Prop. Line
283-724

M.P.E. 68'S
IM Line

Donated as Parcel 38
on Project F 006-1(12)

PAT 277-000

281-718

280-724

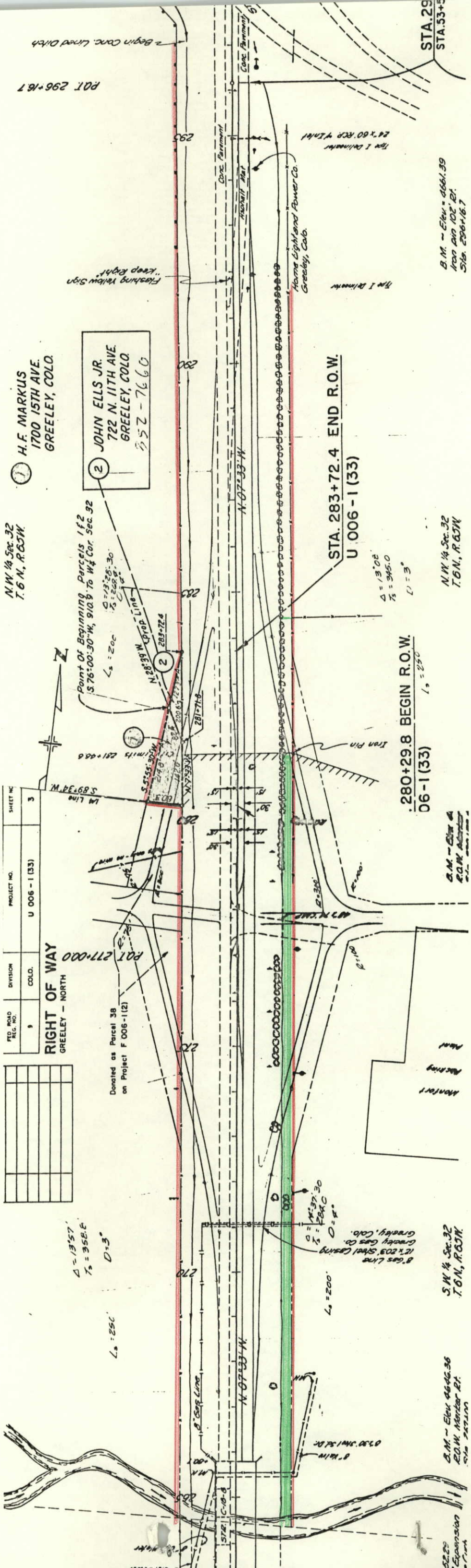
280-724

280-724

280-724

280-724

280-724



B.M. - Elev. = 4661.39
Iron pin 102 ft.
Sta. 296+16.7

N.W. 1/4 Sec. 32
T.6 N., R.63 W.

280+29.8 BEGIN R.O.W.
06-1(33)

283+72.4 END R.O.W.
U 006-1(33)

B.M. - Elev. = 4661.39
Iron pin 102 ft.
Sta. 296+16.7

S.W. 1/4 Sec. 32
T.6 N., R.63 W.

B.M. - Elev. = 4661.39
Iron pin 102 ft.
Sta. 296+16.7

S.W. 1/4 Sec. 32
T.6 N., R.63 W.

B.M. - Elev. = 4661.39
Iron pin 102 ft.
Sta. 296+16.7

S.W. 1/4 Sec. 32
T.6 N., R.63 W.

B.M. - Elev. = 4661.39
Iron pin 102 ft.
Sta. 296+16.7

HIGHWAY RIGHT OF WAY

LEASED TO MONFORTS

