

STATE DEPARTMENT OF HIGHWAYS DIVISION OF HIGHWAYS—STATE OF COLORADO

FEDERAL ROAD REGION NO.	DIVISION	PROJECT NO.	SHEET NO.
9	COLORADO	U 016-1(42)	1

RIGHT OF WAY Hampden Ave. at Broadway

CONVENTIONAL SIGNS

CENTER LINE	PLAN SHEET	TITLE SHEET	END PROJ.
COUNTY LINE	BEGIN PROJ.		
TOWNSHIP OR RANGE LINE	SECTION LINE	SECTION LINE	SECTION LINE
LAND LINES	PLAN SHEET		
CITY LIMITS	TITLE SHEET		
RAILROAD			
BARBED WIRE FENCE			
WOVEN WIRE - COMBINATION FENCE			
TELE. & TELEG. LINE			
POWER LINE			
PRESENT ROAD (PLAN SHEETS)			
RIGHT OF WAY LINE			
ACCESS POINTS (FREEWAYS)			
C OF A LINE (CONTROL OF ACCESS)			
ACCESS DENIED BY DEED			
TOP OF CUTS			
TOE OF FILLS			
DETOUR			
PROPERTY OWNERSHIP LINE			
WATER METERS			
WATER VALVES			

RIGHT OF WAY PLAN OF PROPOSED FEDERAL AID PROJECT NO. U 016-1(42) STATE HIGHWAY NO. 285 ARAPAHOE COUNTY RIGHT OF WAY

INDEX OF SHEETS

SHEET NO. 1	TITLE SHEET
SHEET NO. 2	TABULATION OF PROPERTIES
SHEET NO. 3	PLAN SHEET SHOWING R.O.W. REQUIRED

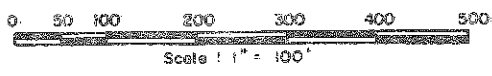
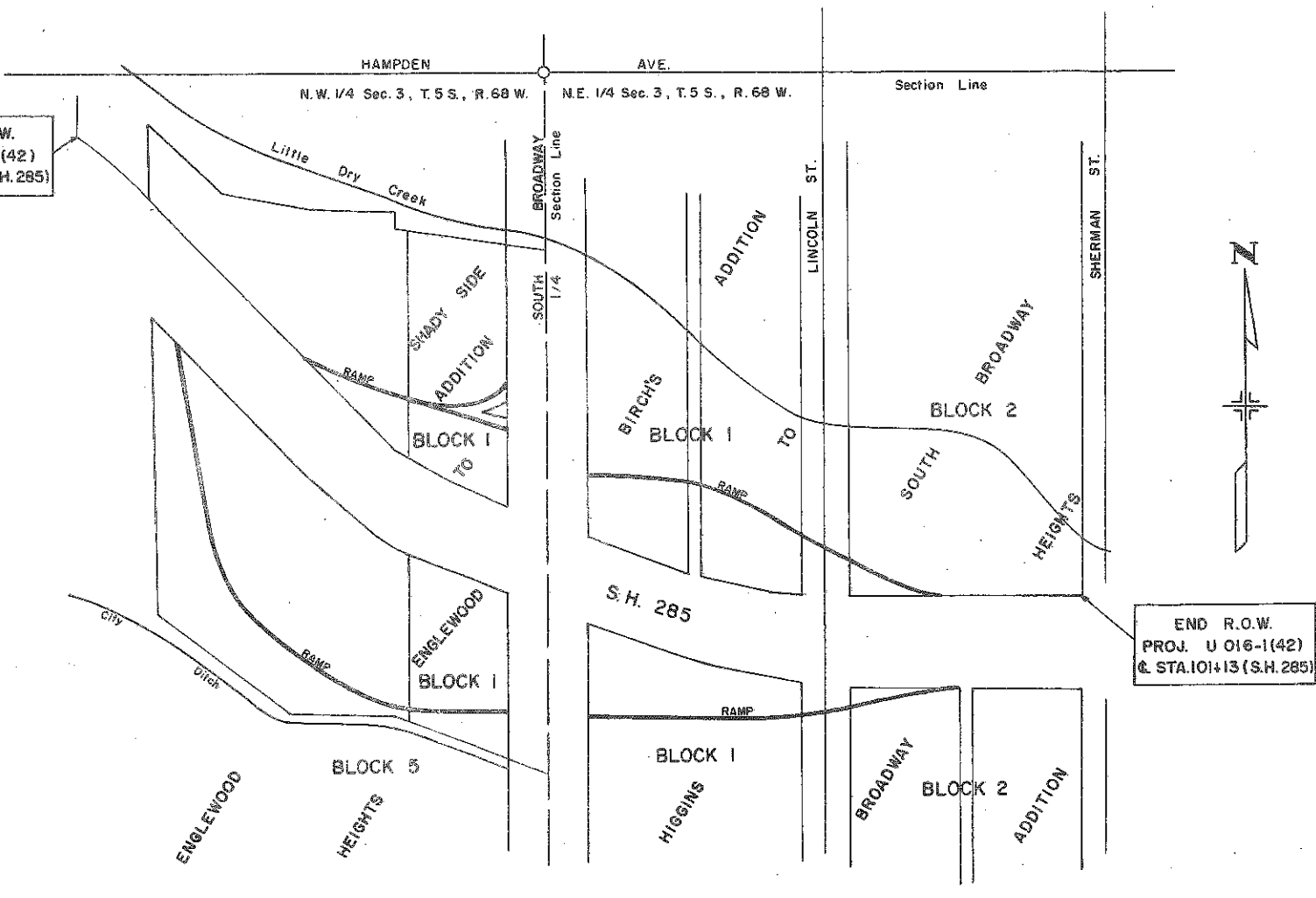
INFORMATION OBTAINED FROM AVAILABLE COUNTY RECORDS

SCALE OF ORIGINAL DRAWING
ON PLAN, 1" = 50'
LENGTH OF PROJECT = 0.278 MILES (ROW)

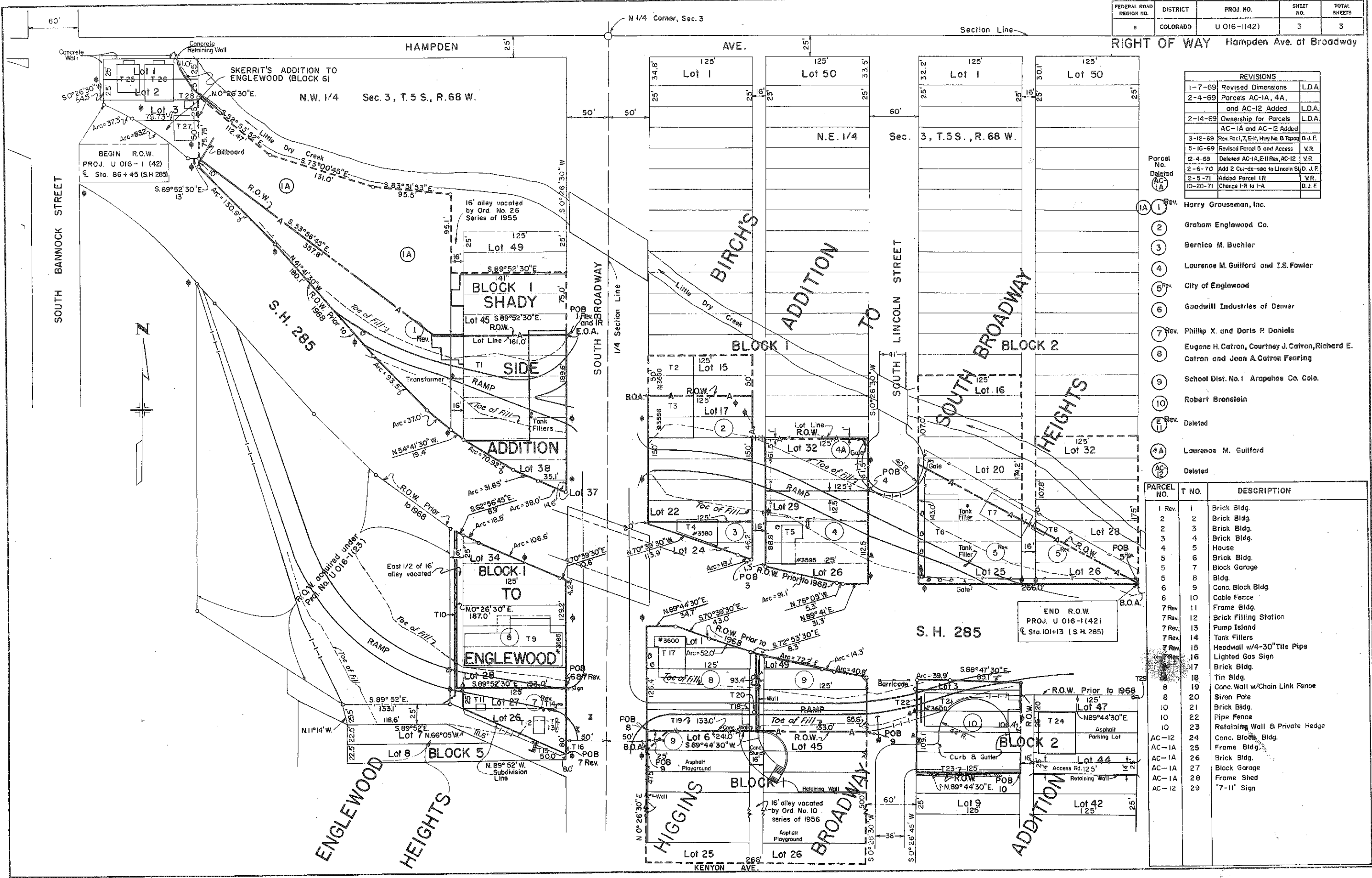
BEGIN R.O.W.
PROJ. U 016-1(42)
@ STA. 86+45 (S.H. 285)

NOTE: THIS PROJECT CALCULATED AND CHECKED BY THE DISTRICT. ALL BEARINGS ARE CALCULATED.

REVISIONS		
3-12-69	Rev. Highway No.	D.J.F.



FEDERAL ROAD REGION NO.	DISTRICT	PROJ. NO.	SHEET NO.	TOTAL SHEETS
9	COLORADO	U 016-1(42)	3	3



REVISIONS		
1-7-69	Revised Dimensions	L.D.A.
2-4-69	Parcels AC-1A, 4A, and AC-12 Added	L.D.A.
2-14-69	Ownership for Parcels AC-1A and AC-12	L.D.A.
3-12-69	Rev. Par. 1, 7, E-11, Hwy No. 8 Topog	D.J.F.
5-16-69	Revised Parcel 5 and Access	V.R.
12-4-69	Deleted AC-1A, E-11 Rev, AC-12	V.R.
2-6-70	Add 2 Cul-de-sac to Lincoln St	D.J.F.
2-5-71	Added Parcel 1R	V.R.
10-20-71	Change 1-R to 1-A	D.J.F.

- Parcel No. Deleted (A) 1 Rev. Harry Grouseman, Inc.
- (2) Graham Englewood Co.
- (3) Bernice M. Buchler
- (4) Laurence M. Guilford and T.S. Fowler
- (5) City of Englewood
- (6) Goodwill Industries of Denver
- (7) Rev. Phillip X. and Doris P. Daniels
- (8) Eugene H. Catron, Courtney J. Catron, Richard E. Catron and Joan A. Catron Fearing
- (9) School Dist. No. 1 Arapahoe Co. Colo.
- (10) Robert Bronstein
- (E) Deleted
- (4A) Laurence M. Guilford
- (AC-12) Deleted

PARCEL NO.	T NO.	DESCRIPTION
1 Rev.	1	Brick Bldg.
2	2	Brick Bldg.
2	3	Brick Bldg.
3	4	Brick Bldg.
4	5	House
5	6	Brick Bldg.
5	7	Block Garage
5	8	Bldg.
6	9	Conc. Block Bldg.
6	10	Cable Fence
7 Rev.	11	Frame Bldg.
7 Rev.	12	Brick Filling Station
7 Rev.	13	Pump Island
7 Rev.	14	Tank Fillers
7 Rev.	15	Headwall w/4-30" Tile Pipe
7 Rev.	16	Lighted Gas Sign
7 Rev.	17	Brick Bldg.
8	18	Tin Bldg.
8	19	Conc. Wall w/Chain Link Fence
8	20	Siren Pole
10	21	Brick Bldg.
10	22	Pipe Fence
10	23	Retaining Wall & Private Hedge
AC-12	24	Conc. Block Bldg.
AC-1A	25	Frame Bldg.
AC-1A	26	Brick Bldg.
AC-1A	27	Block Garage
AC-1A	28	Frame Shed
AC-12	29	"7-11" Sign