

FED. ROAD DIST. NO.	STATE	U.S.W.P. PROJ. NOS.	SHEET NO.	TOTAL SHEETS
3	COLO.	W.P.S.S. 388-C W.R.G.S. 388-D	1	

# COLORADO STATE HIGHWAY DEPARTMENT

## PLAN AND PROFILE OF PROPOSED U.S. WORKS PROGRAM HIGHWAY PROJECT W.P.S.S. NO. 388-C

### STATE HIGHWAY NO. 131 ROUTT COUNTY

#### INDEX OF SHEETS

- SHEET NO. 1- TITLE SHEET  
 " NO. 2- TYPICAL SECTION & SUMMARY  
 " 3 TO 7- DETAILS FOR R.R. OVERPASS  
 " NO. 8- STANDARD CULVERT HEADWALLS M-102-E  
 " NO. 9- C.M.P. SIPHON M-123-A  
 " NO. 10- GUARD FENCE M-20-G  
 " NO. 11- WIRE FENCES & MARKERS M-24-FX  
 " NO. 12- STRUCT. NO. LETTERING M-10-A  
 " NO. 13- SUPERELEVATION SHEET M-1-A  
 " NO. 14- APPROACH ROADS & SIGNS M-2-B  
 " NO. 15- PLAN & PROFILE SHEET  
 " 16- 17- CROSS SECTION SHEETS

*See final Const. & Sect.*

- SHEET NO. 1- TITLE SHEET  
 " NO. 2- TYPICAL SECTIONS & SUMMARY  
 " NO. 3- STD CONC. BOX CULVERTS M-103-D  
 " NO. 4- CULVERT HEADWALLS M-102-E  
 " NO. 5- C.M.P. SIPHON (SPECIAL) M-123-A  
 " NO. 6- WIRE FENCE & MARKERS M-24-FX  
 " NO. 7- SUPERELEVATION SHEET M-1-A  
 " NO. 8- APPROACH ROADS & SIGNS M-2-B  
 " 9 TO 12- PLAN & PROFILE SHEETS  
 " 13 TO 15- CROSS SECTION SHEETS

*See final Const. & Sect.*

#### SCALES OF ORIGINAL TRACINGS

ON PLAN, 1 IN. = 100 FT.

ON PROFILE 1 IN. = 100 FT. HORIZONTAL

1 IN. = 10 FT. VERTICAL

GRADE LINE ON PROFILE IS SHOWN AS GRADE OF FINISHED ROAD

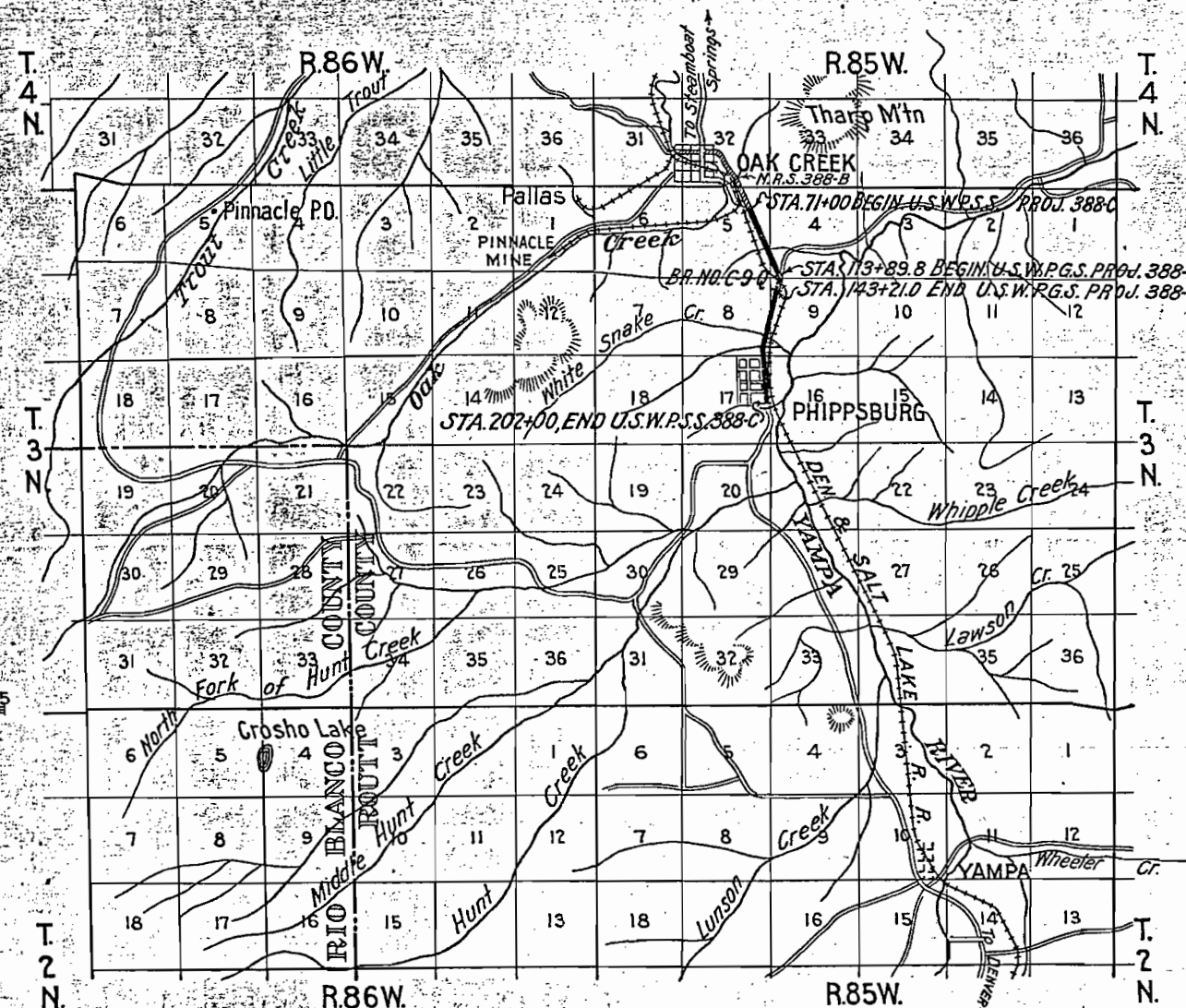
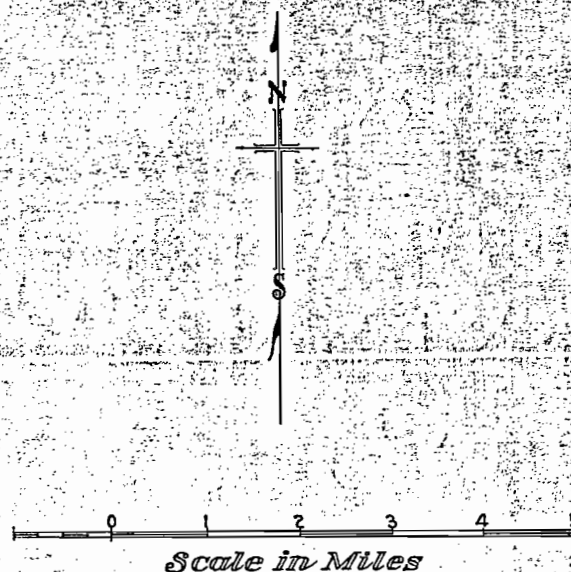
W.P.S.S. 388-C GROSS LENGTH OF PROJECT 12,976.8 FT. = 2.457 MI.  
 NET LENGTH OF PROJECT 9,976.8 FT. = 1.889 MI.

W.P.G.S. 388-D GROSS LENGTH OF PROJECT 3,000.0 FT. = 0.568 MI.  
 NET LENGTH OF PROJECT

#### CONVENTIONAL SIGNS

CENTER LINE OF SURVEY 350  
 RIGHT OF WAY LINES  
 ONE QUARTER SECTION LINES  
 SECTION LINES  
 TOWNSHIP LINES  
 COUNTY LINES  
 BARBED WIRE FENCE  
 COMBINATION WIRE FENCE  
 WIRE CABLE GUARD FENCE  
 RAILROADS  
 POLE LINES

NOTE: It is recommended that bidders on this Project go over the plan details with one of the following field representatives of this Department:  
 H.L. Jenness, Division Engineer, located at Glenwood Springs.  
 Stanley Dismuke, Resident " " " Oak Creek.



RECOMMENDED FOR APPROVAL 11/19/35

*J. H. Halmer*  
 ASSISTANT ENGINEER

APPROVED  
*Chas. D. Vail*  
 STATE HIGHWAY ENGINEER

RECOMMENDED FOR APPROVAL

DIST. ENG. BUREAU PUBLIC ROADS

RECOMMENDED FOR APPROVAL

CHIEF ENG. BUREAU PUBLIC ROADS

APPROVED



FED. ROAD DIST. NO.	STATE	W.P.S.S. PROJ. NO.	SHEET NO.	TOTAL SHEETS
2	COLO.	388C	9	

N.E.4 SEC.5

N.W.4 SEC.4

S.W.4 SEC.4

NOTE: Fencing & Right of Way Markers  
Reqd are Tabulated on Sheet No.2.  
Poles Encroaching on R.O.W.  
Are to Be Moved By Owners.

STA. 82+75-  
Reqd 15"x32' C.M.P. side drain, left, &  
50 cu. yds embank. for Rd approaches,  
R. & L., Gates Reqd. R. & L.

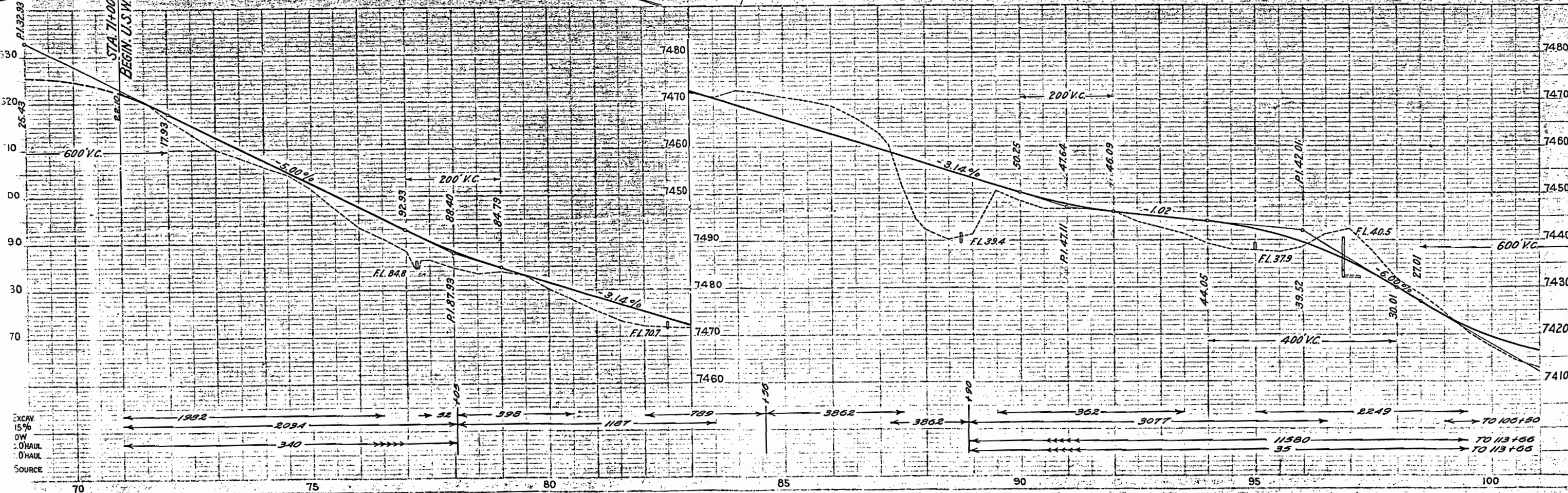
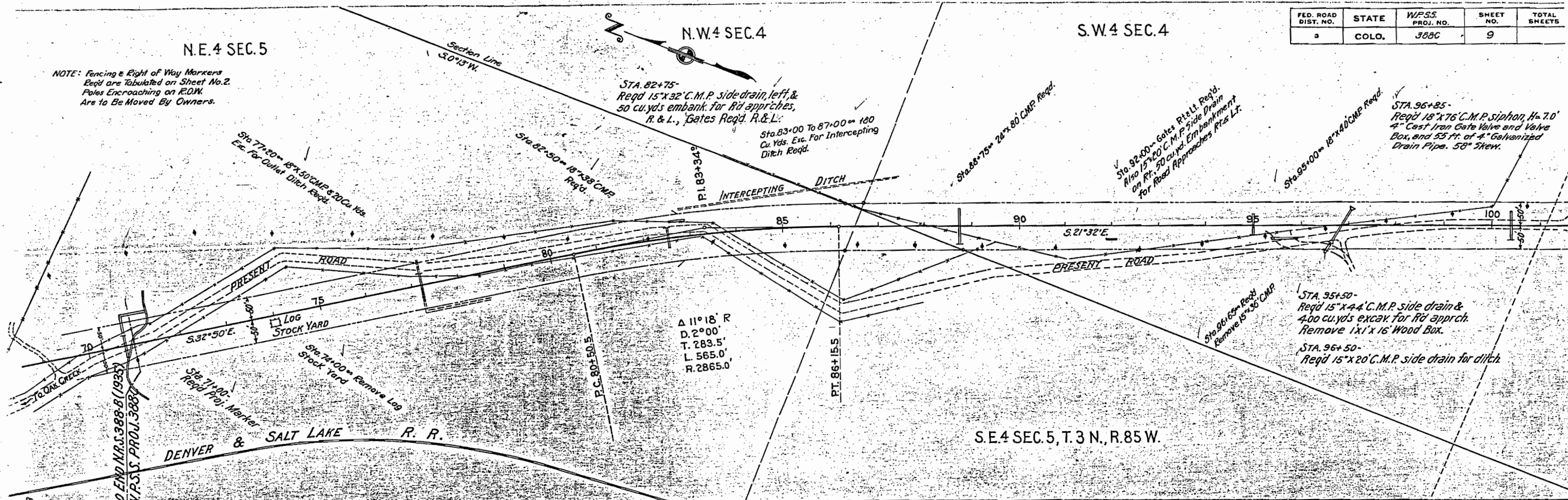
Sta. 83+00 To 87+00 = 180  
Cu. Yds. Exc. For Intercepting  
Ditch Reqd.

Sta. 88+75 = 20"x80' CMP Reqd.

Sta. 92+00 = Gates Rt. Lt. Reqd.  
Also 15"x20' C.M.P. Side Drain  
on Rt. 50 cu. yd. Embankment  
for Road Approaches Rts Lt.

Sta. 95+00 = 18"x40' CMP Reqd.

STA. 96+85-  
Reqd 18"x76' C.M.P. siphon, H=7.0'  
4" Cast Iron Gate Valve and Valve  
Box, and 55 ft. of 4" Galvanized  
Drain Pipe. 58° Skew.

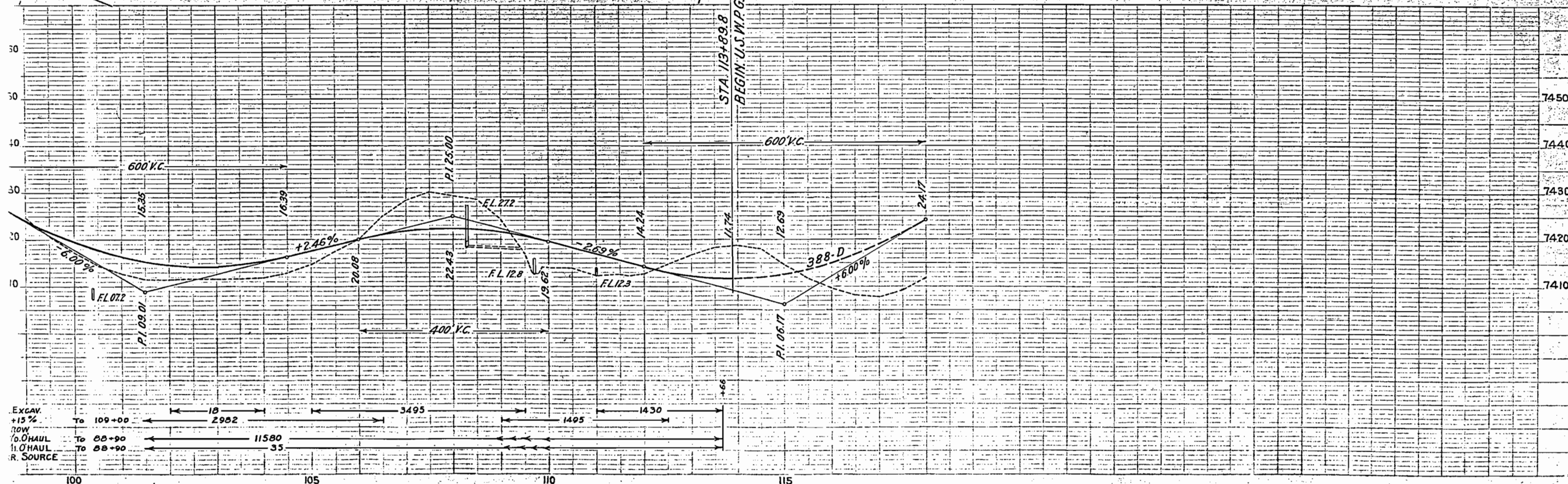
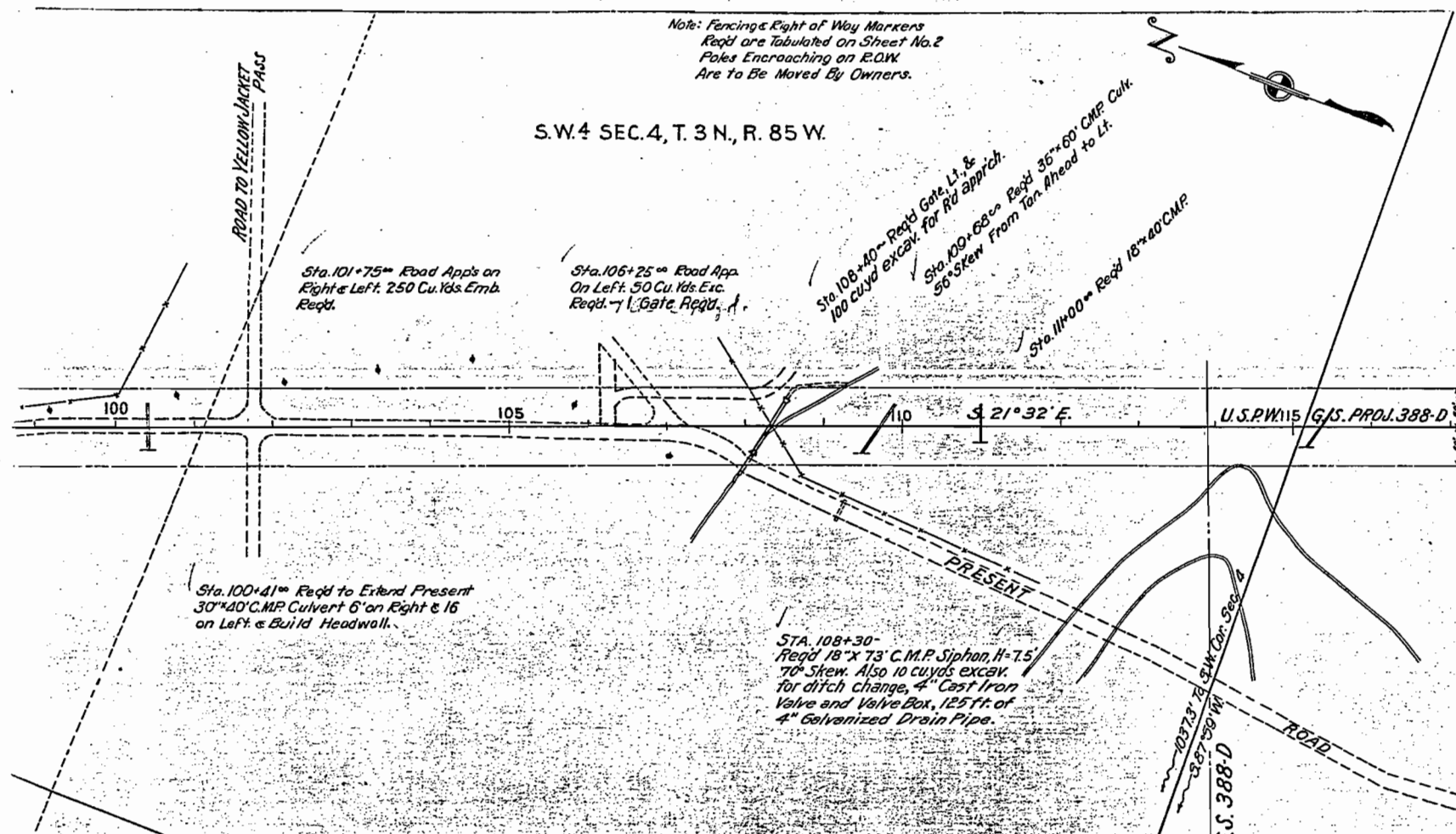




FED. ROAD DIST. NO.	STATE	W.P.S.S. PROJ. NO.	SHEET NO.	TOTAL SHEETS
3	COLO.	388-C	10	

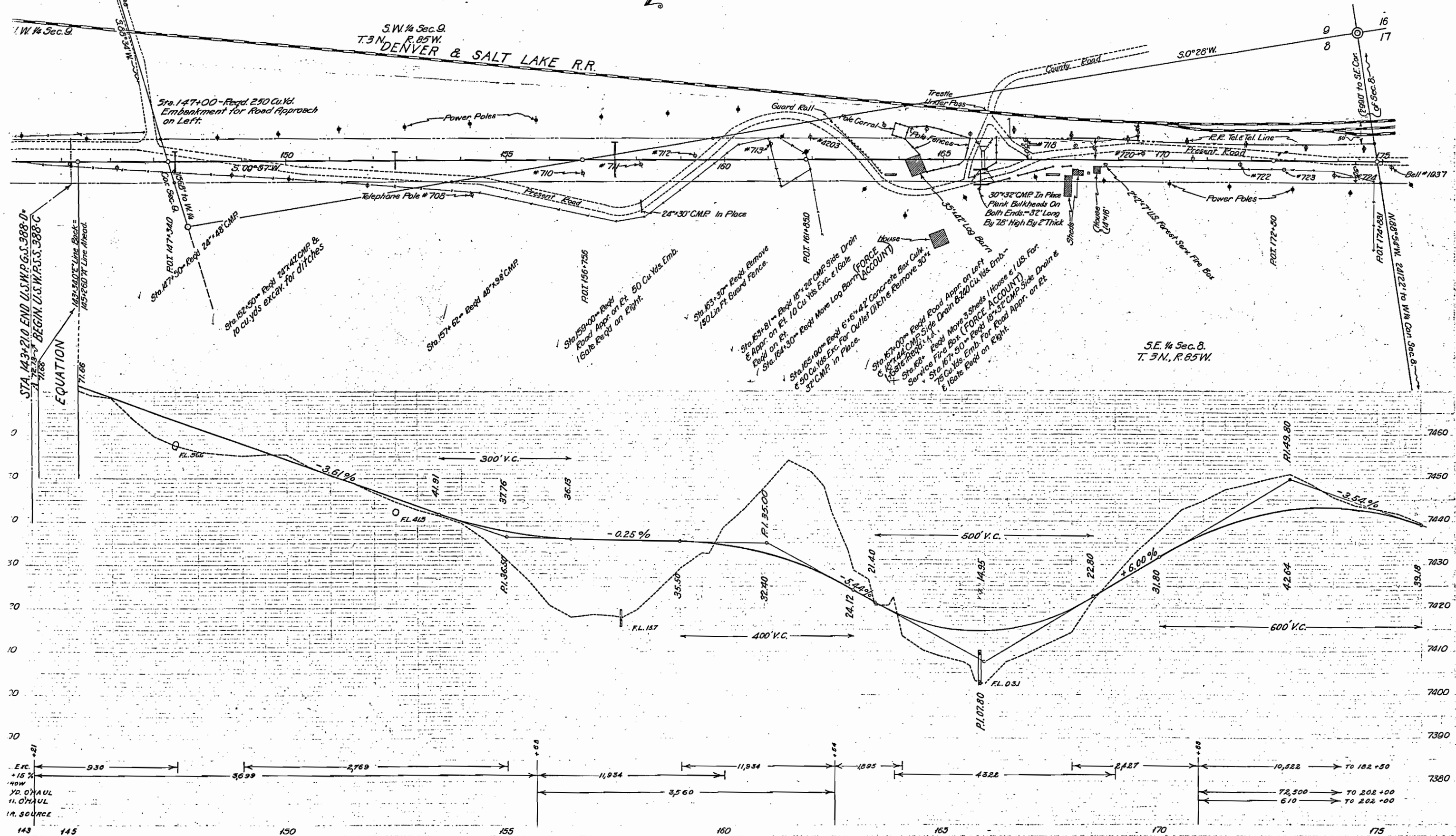
Note: Fencings & Right of Way Markers  
Reqd are Tabulated on Sheet No. 2  
Poles Encroaching on R.O.W.  
Are to Be Moved By Owners.

S.W. 4 SEC. 4, T. 3 N., R. 85 W.



EXCAV. +15%	To 109+00	18	2952	3495	1495	1430	66
ROW	To 88+90	11580					
TO HAUL	To 88+90	35					
R. SOURCE							

S.W. 1/4 Sec. 9.  
T.3N. R.85W.  
DENVER & SALT LAKE R.R.



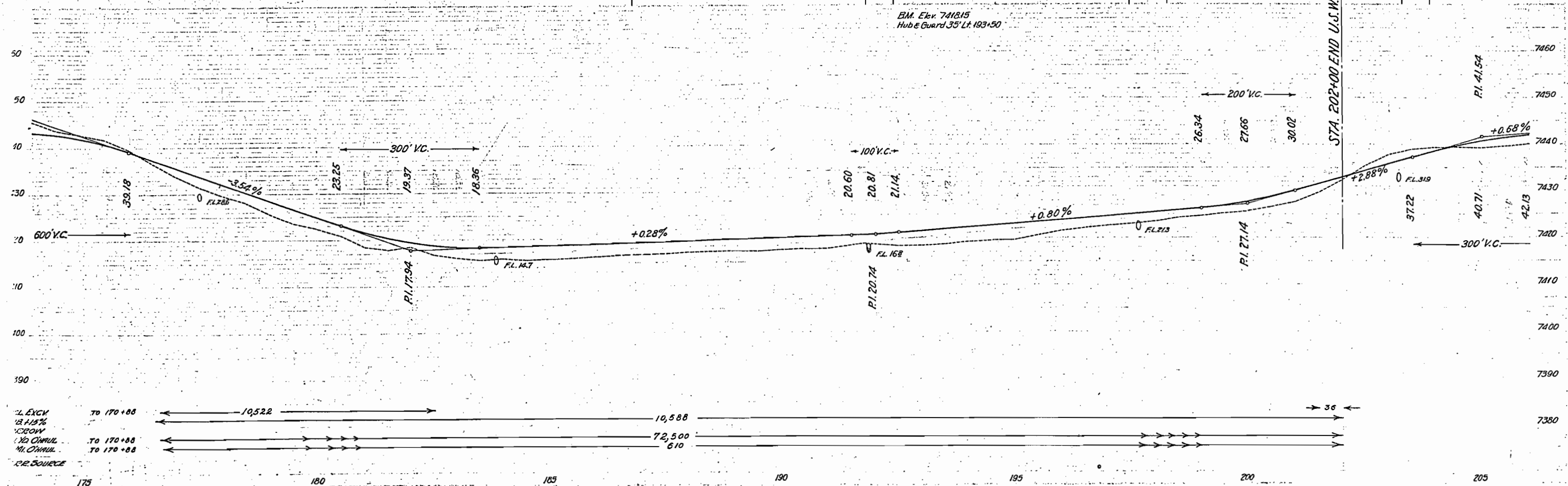
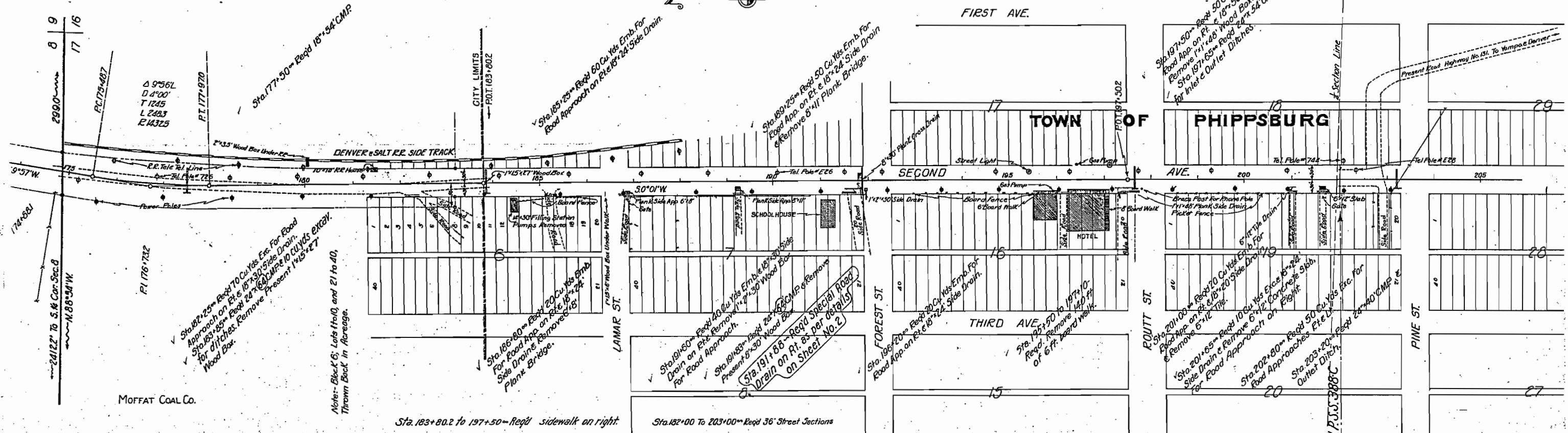
Note: Fencing & Right of Way Markers Reqd  
Are Tabulated on Sheet No 2.  
Poles Encroaching on R.O.W.  
Are to Be Moved By Owners.

Sec. 17, T. 3 N., R. 85 W.

W.P.S.S.

388-C 12

Revised-Jan. 31, 1936-H.R.H.



INDEX OF SHEETS

# COLORADO STATE HIGHWAY DEPARTMENT

## PLAN AND PROFILE OF PROPOSED

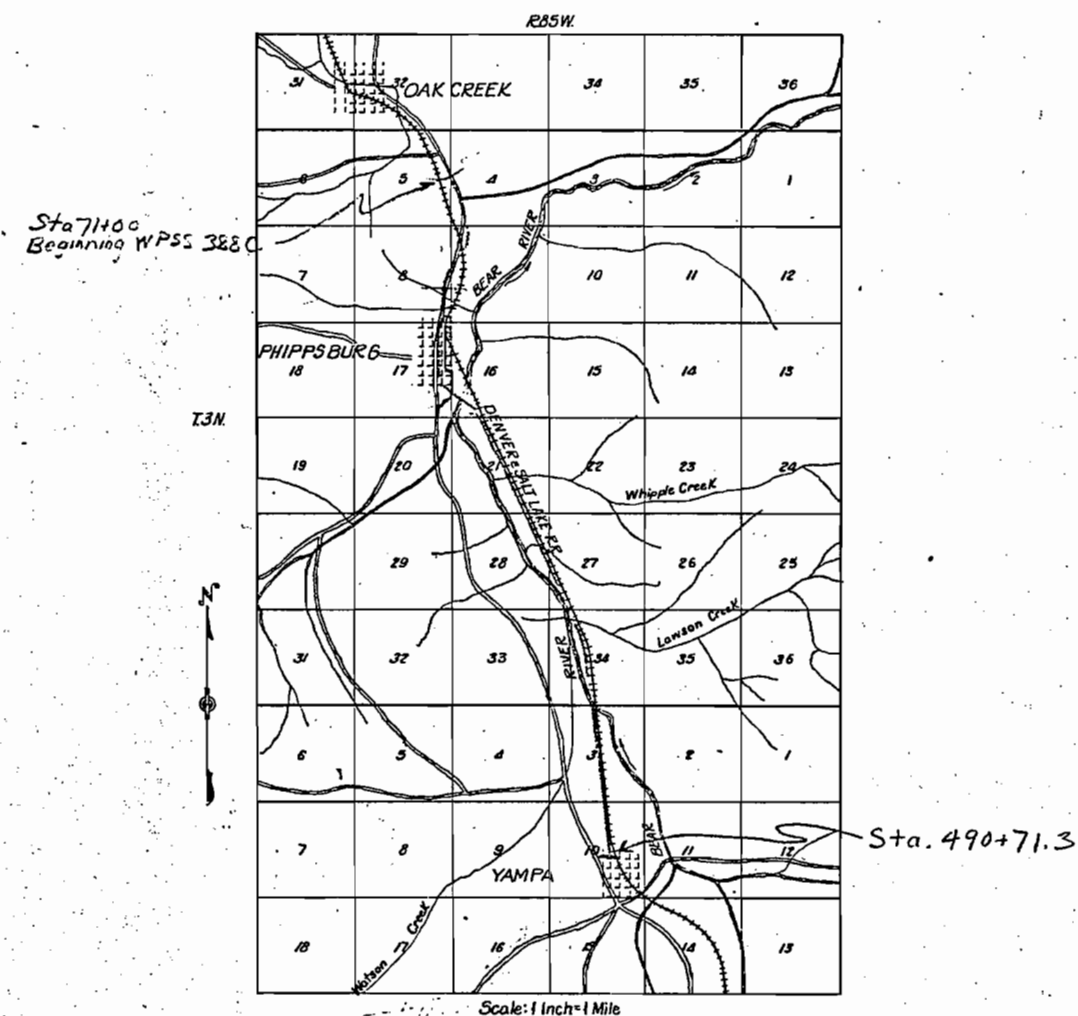
WPSS 388-C

## STATE HIGHWAY NO. 131 ROUTT COUNTY

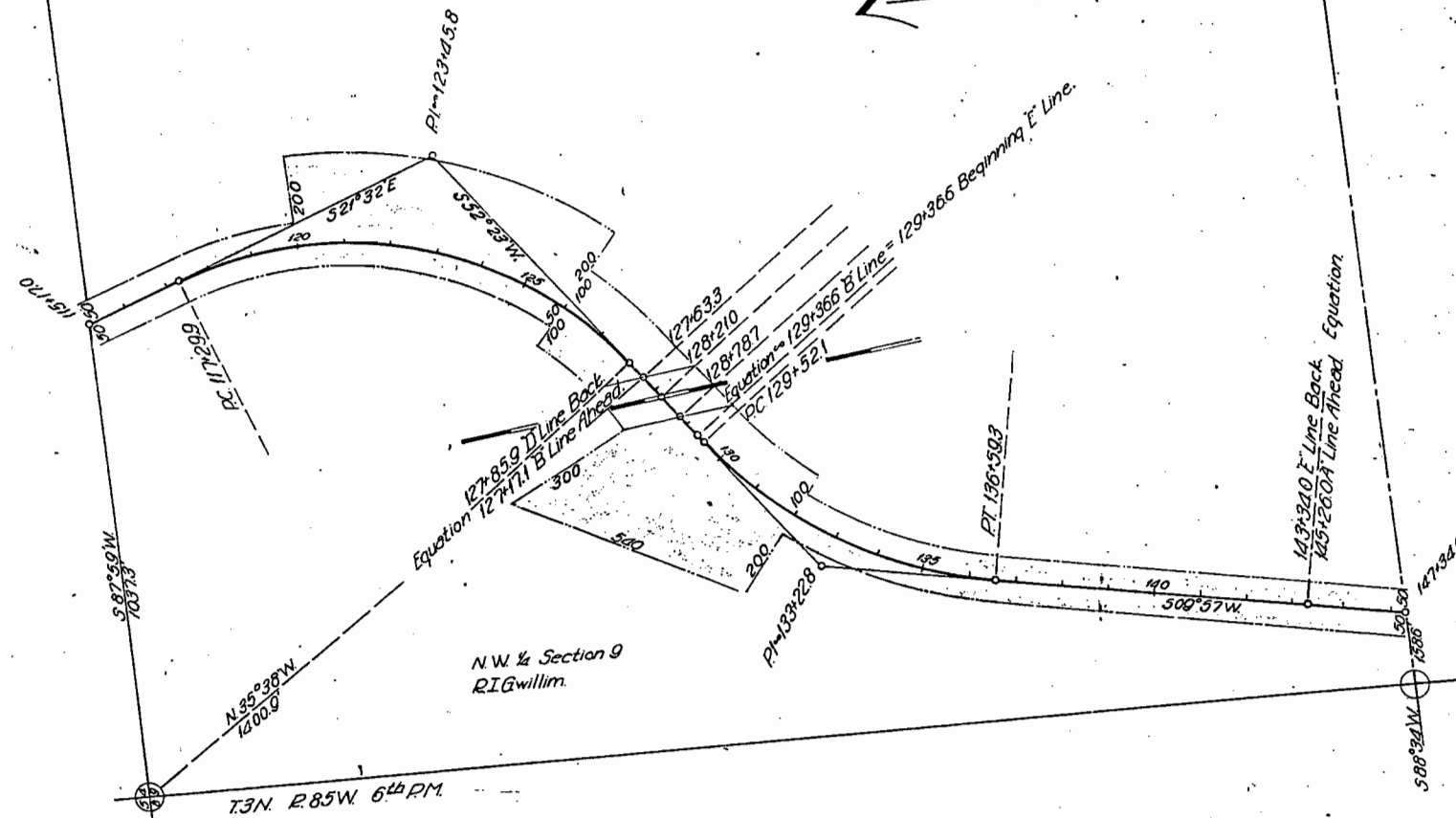
### CONVENTIONAL SIGNS

Center Line Improvement  
ROW Lines  
Section Line  
Line  
RR Tele Tel. Line  
Fencing  
DeSLRR

SCALES  
ON PLAN 1 IN. = 100 FT.  
ON PROFILE 1 IN. = 100 FT. HORIZONTAL  
1 IN. = 10 FT. VERTICAL  
GRADE LINE ON PROFILE IS SHOWN AS GRADE OF FINISHED ROAD  
GROSS LENGTH OF PROJECT  
NET LENGTH OF PROJECT







P. I. WILLI

Conveys all of the land situated within the Right of Way of W.P.S.S.-388-C. Said R.O.W. is located in the NW 1/4 of Section 9, T 3 N, R 65 W, of the 6th. P.M. More particularly described as follows.

Beginning at Station 115+17 a point on the centerline of said highway from which the NW corner of Section 9 bears S 87°59' W a distance of 1037.3 feet; thence S 87°59' W along the North boundary line of Section 9 for a distance of 53.0 feet to the West R.O.W. line of the said highway; thence S 21°32' E for a distance of 230.6 feet; thence with a curve to the right having a radius of 768.6 feet for a distance of 817.0 feet; thence S 50°38' W a distance of 50 feet; thence continuing with a curve parallel to afore mentioned curve with a radius of 716.6 feet for a distance of 153.1 feet to the intersection of the D. & S.L. R.R. Right of Way; thence S 07°37' E a distance of 115.5 feet to Station 127+63.3 a point on the centerline of said highway; thence continuing S 07°37' E a distance of 115.5 feet; thence N 52°23' E for a distance of 103.9 feet; thence with a curve to the left with a radius of 918.6 feet for a distance of 208.8 feet; thence S 50°38' E a distance of 100 feet; thence continuing with a curve parallel to afore mentioned curve having a radius of 1618.6 feet for a distance of 746.6 feet; thence S 87°22' W a distance of 150 feet; thence continuing with a curve parallel to afore mentioned curve having a radius of 858.6 feet for a distance of 286.6 feet; thence N 21°32' W for a distance of 195.2 feet to the North boundary line of Section 9; thence S 87°59' W a distance of 53.0 feet to the point of beginning.

Said R.O.W. contains 5.690 acres all of which is to be acquired.

DEWEY AND SALT LAKE MILITARY

Conveys all the land situated within the Right of Way of W.P.S.S.-388-C. Said R.O.W. is located in the NW 1/4 of Section 9, T 3 N, R 65 W, of the 6th. P.M. More particularly described as follows.

Beginning at Station 127+63.3 a point on the centerline of said highway from which the NW corner of Section 9 bears N 35°38' W a distance of 1400.6 feet; thence N 07°37' E a distance of 115.5 feet; thence S 52°23' E a distance of 115.4 feet; thence S 07°37' E a distance of 115.5 feet to Station 128+78.7 a point on the centerline of said highway; thence continuing S 07°37' E a distance of 115.5 feet; thence N 52°23' E a distance of 115.4 feet; thence W 07°37' E a distance of 115.5 feet to point of beginning.

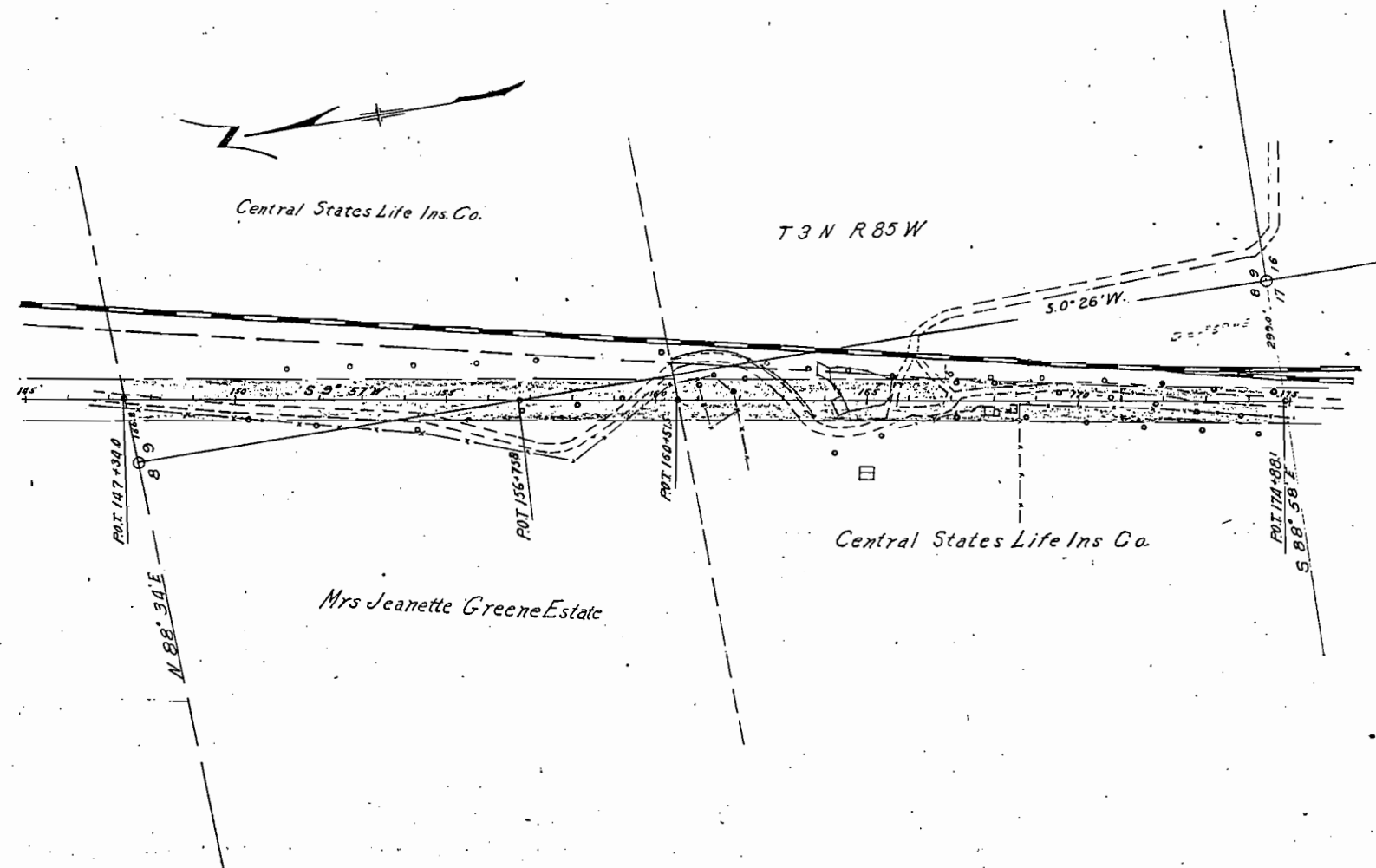
Said Right of Way contains 0.530 acres all of which is to be acquired.

R. I. WILLI

Conveys all of the land situated within the Right of Way of W.P.S.S.-388-C. Said R.O.W. is located in the NW 1/4 of Section 9, T 3 N, R 65 W, of the 6th. P.M. More particularly described as follows.

Beginning at Sta. 147+34 a point on the centerline of the said highway from which the West 1/4 corner of Section 9 bears S 68°34' W a distance of 158.6 feet; thence N 88°34' E a distance of 51.0 feet; thence N 09°57' E a distance of 872.6 feet; thence with a curve to the right with a radius of 905 feet for a distance of 435.3 feet; thence S 52°29' E a distance of 50 feet; thence continuing with a curve parallel to the before mentioned curve with a radius of 855 feet for a distance of 221.9 feet; thence S 32°23' E a distance of 15.7 feet; thence N 07°37' W a distance of 115.5 feet to Station 128+78.7 a point on the centerline of said highway; thence continuing N 07°37' W a distance of 115.5 feet; thence S 28°02' W a distance of 300 feet; thence S 26°23' W a distance of 540 feet; thence S 52°29' E a distance of 150 feet; thence with a curve to the left having a radius of 1005 feet for a distance of 483.3 feet; thence S 09°57' W a distance of 652.6 feet; thence N 88°34' E a distance of 51.0 feet to point of beginning.

Said R.O.W. contains 6.517 acres of which 2.172 acres is contained in the present road, leaving 4.345 acres to be acquired.



CENTRAL STATES LIFE INSURANCE CO.

Conveys all the land situated within the Right of Way of W.P.S.S. 388-C. Said R.O.W. is located in the SW $\frac{1}{4}$  of Section 8, T3N, R85W, of the 6th. P.M. More particularly, described as follows.

Beginning at Sta. 147+39.0 a point on the centerline of said highway from which the West  $\frac{1}{4}$  corner of Section 8, bears S 88° 34' E a distance of 156.8 feet; thence S 88° 34' E a distance of 51 feet; thence S 09° 57' E a distance of 635.4 feet; thence S 0° 26' W a distance of 302.4 feet to Sta. 156+75.8 a point on the centerline of said highway; thence continuing S 0° 26' W a distance of 302.4 feet; thence N 09° 57' E a distance of 1250.2 feet; thence S 88° 34' E a distance of 51 feet to point of beginning.

Said R.O.W. contains 2.164 acres of which 1.107 acres are contained in the old road and 1.057 acres to be acquired.

MRS. JEANETTE GREENE, ESTATE.

Conveys all the land situated within the Right of Way of W.P.S.S. 388-C. Said R.O.W. is located in the SE $\frac{1}{4}$  of Section 8, T3N, R85W, of the 6th. P.M. More particularly, described as follows.

Beginning at Sta. 156+75.8 a point on the centerline of said highway from which the West  $\frac{1}{4}$  corner of Section 8, bears N 0° 26' E a distance of 539.9 feet; thence N 0° 26' E a distance of 302.4 feet; thence S 09° 57' E a distance of 635.0 feet; thence N 89° 47' E a distance of 50.8 feet to station 160+51.5 a point on the centerline of said highway; thence continuing N 89° 47' E a distance of 50.8 feet; thence N 09° 57' E a distance of 68.4 feet; thence N 0° 26' E a distance of 302.4 feet to point of beginning.

Said R.O.W. contains 0.862 acres of which 0.207 acres are contained in the present road and 0.655 acres to be acquired.

CENTRAL STATES LIFE INSURANCE CO.

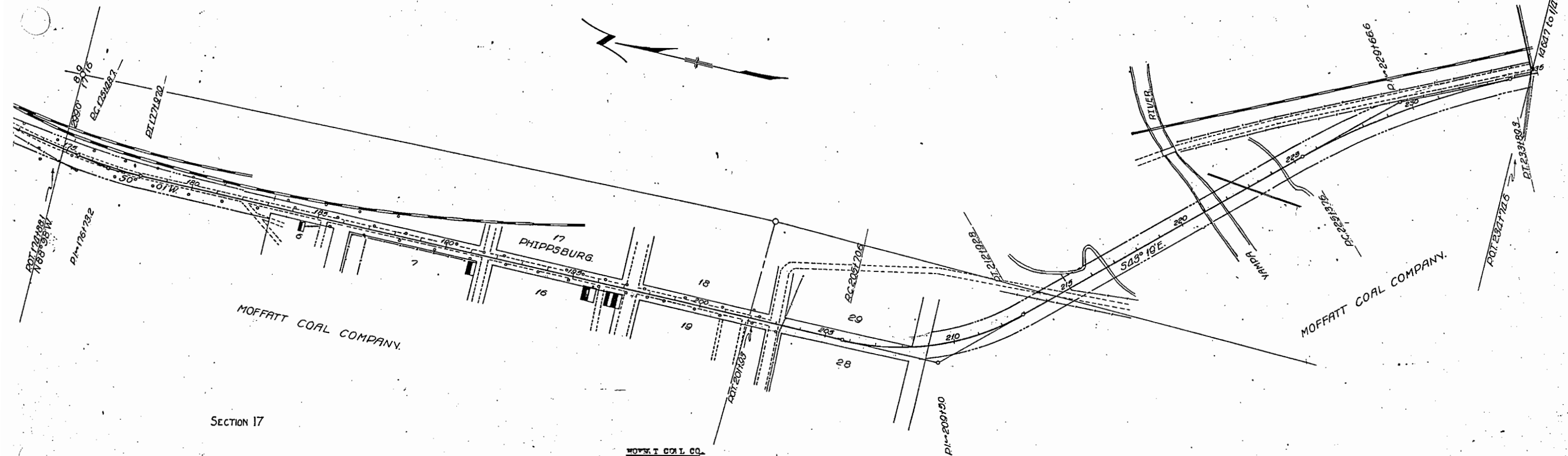
Conveys all the land situated within the Right of Way of W.P.S.S. 388-C. Said R.O.W. is located in the SE $\frac{1}{4}$  of Section 8, T3N, R85W, of the 6th. P.M. More particularly, described as follows.

Beginning at Sta. 174+88.1 a point on the centerline of said highway from which the section corner common to S, 9, 17 and 16 bears S 88° 58' E a distance of 299.0 feet; thence N 88° 58' W a distance of 302.4 feet; thence N 09° 57' E a distance of 1435.4 feet; thence N 89° 47' E a distance of 50.8 feet to Sta. 160+51.5 a point on the centerline of said highway; thence continuing N 89° 47' E a distance of 50.8 feet; thence S 09° 57' E a distance of 805.5 feet; thence with a curve to the left with a radius of 5779.6 feet for a distance of 626.5 feet; thence N 88° 58' W a distance of 40.5 feet to point of beginning.

Said R.O.W. contains 3.225 acres of which 1.446 acres are contained in the present road and 1.779 acres to be acquired.



SECTION 16  
T. 3 N., R. 85 W.

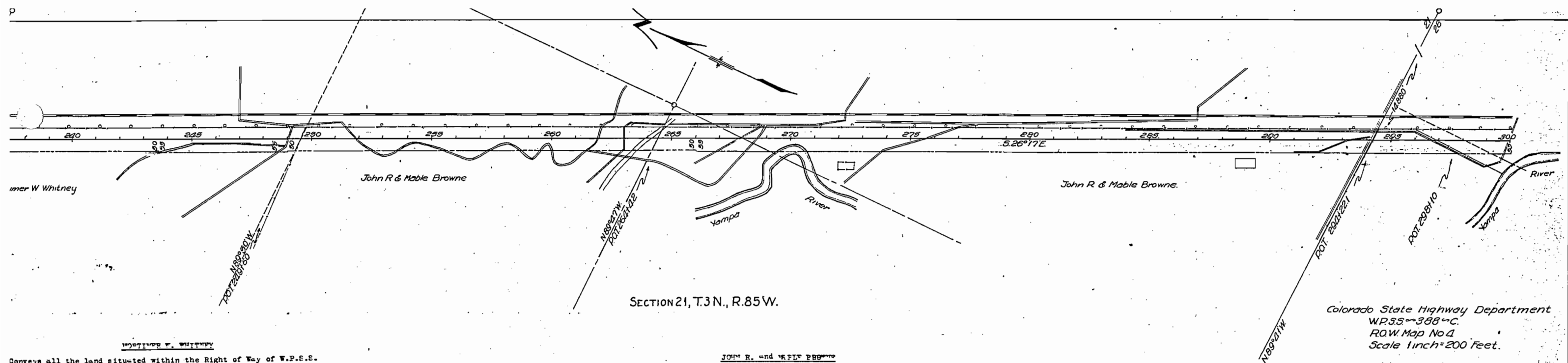


SECTION 17

Conveys all the land situated within the Right of Way of W.R.S.S. 388-C. Said R.O.W. is located in the NE $\frac{1}{4}$  and SE $\frac{1}{4}$  of Section 17 and the SW $\frac{1}{4}$  of Section 16, T. 3 N., R. 85 W., of the 6th. P.M. More particularly described as follows.

Beginning at Sta. 174+88.1 a point on the centerline of said highway from which the section corner common to 8, 9, 16, and 17 bears S 88°58' E a distance of 289 feet; thence N 88°58' W a distance of 506 feet; thence S 09°57' W a distance of 528 feet; thence with a curve to the left having a radius of 1482.5 feet for a distance of 257 feet; thence S 0°01' W a distance of 521 feet; thence S 89°59' E a distance of 20 feet; thence S 0°01' W a distance of 2252.6 feet; thence with a curve to the left with a radius of 985 feet for a distance of 320 feet; thence N 89°59' W a distance of 21 feet; thence continuing with a curve parallel to before mentioned curve with a radius of 1005 feet for a distance of 445 feet; thence S 43°19' E a distance of 1244.8 feet; thence with a curve to the right with a radius of 2815 feet for a distance of 836.9 feet; thence S 26°17' E a distance of 605 feet; thence S 89°54' E a distance of 558 feet to Station 234+74.6 a point on the centerline of said highway; thence continuing S 89°54' E a distance of 558 feet; thence N 26°17' W a distance of 1101 feet; thence with a curve to the left having a radius of 2815 feet for a distance of 866.6 feet; thence N 43°19' W a distance of 1244.8 feet; thence with a curve to the right having a radius of 905 feet for a distance of 364 feet; thence N 89°58' W a distance of 21 feet; thence with a curve to the right parallel to afore mentioned curve having a radius of 925 feet for a distance of 319 feet; thence N 0°01' E for a distance of 2252.6 feet; thence with a curve to the right having a radius of 5779.6 feet along the D. & S.L. R.R. Right of Way line for a distance of 830 feet; thence N 88°58' W for a distance of 40.8 feet to point of beginning.

Said R.O.W. contains 10.642 acres of which 4.652 acres are contained in the present road and 5.990 acres to be acquired.



SECTION 21, T.3 N., R.85 W.

IMPER W. WHITNEY

Conveys all the land situated within the Right of Way of W.P.S.S. 358-B. Said R.O.W. is located in the NW $\frac{1}{4}$  of Section 21, T 3 N, R 85 W, of the 6th. P.M. More particularly described as follows.

Beginning at Sta. 234/74.6 a point on the centerline of said highway from which the  $\frac{1}{4}$  corner common to Sections 16 and 21 bears S 89°54' E a distance of 1464.7 feet; thence N 89°54' W a distance of 55.8 feet; thence S 26°17' E a distance of 850.3 feet; thence S 63°43' W a distance of 5 feet; thence S 26°17' E a distance of 632.6 feet; thence S 89°50' E a distance of 61.4 feet; to Sta. 249/60 a point on the centerline of said highway; thence continuing S 89°50' E a distance of 55.8 feet; thence N 26°17' W a distance of 1485.4 feet; thence N 89°54' W a distance of 55.8 feet to point of beginning.

Said R.O.W. contains 3.483 acres all of which is to be acquired.

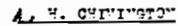
JOHN R. and MABLE BROWNE

Conveys all the land situated within the Right of Way of W.P.S.S. 388-C. Said R.O.W. is located in the NW $\frac{1}{4}$  and SE $\frac{1}{4}$  of Section 21 and in the NE $\frac{1}{4}$  of Section 28, T 3 N, R 85 W, of the 6th. P.M. More particularly described as follows.

Beginning at Sta. 294/42.1 a point on the centerline of said highway from which the Section corner common to 21, 22, 27 and 28 bears S 89°41' E a distance of 1455 feet; thence N 89°41' W a distance of 61.5 feet; thence N 26°17' W a distance of 2754.6 feet; thence N 63°43' E a distance of 5 feet; thence N 26°17' W a distance of 1664.9 feet; thence S 89°50' E a distance of 55.8 feet to Station 249/60 a point on the centerline of said highway; thence continuing S 89°50' E a distance of 55.8 feet; thence S 26°17' E a distance of 4725.1 feet; thence S 0°17' W a distance of 111.8 feet to Sta. 298/10 a point on the centerline of said highway; thence continuing S 0°17' E a distance of 123 feet; thence N 26°17' W a distance of 525.4 feet; thence S 89°41' E a distance of 61.5 feet to point of beginning.

Said R.O.W. contains 11.515 acres all of which is to be acquired.

Colorado State Highway Department  
W.P.S.S. 388-C.  
R.O.W. Map No 4  
Scale 1 inch = 200 Feet.



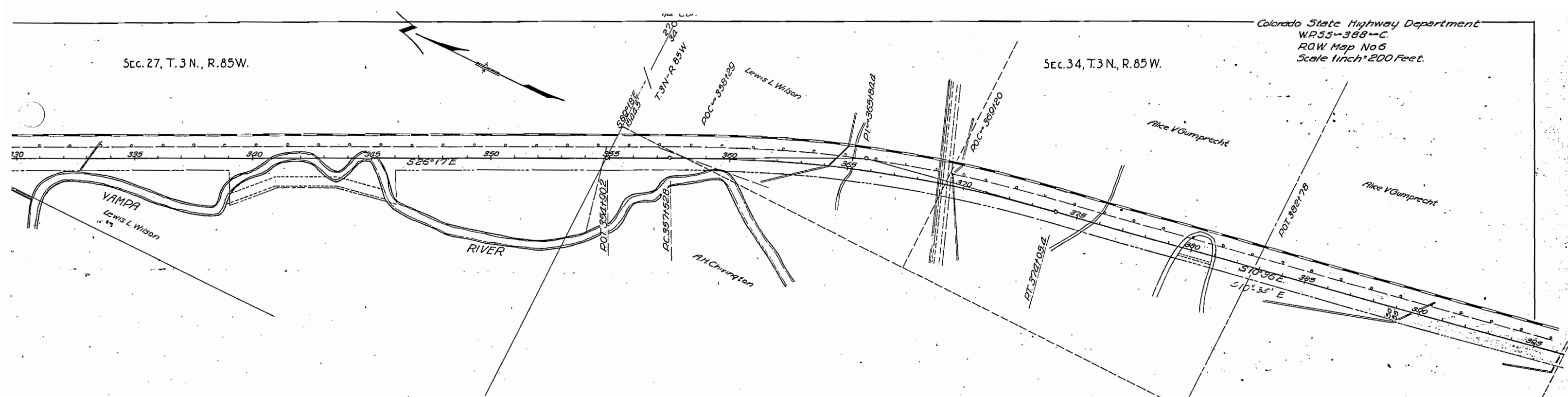
Beginning At Sta. 327/38-6 a point on the centerline of said highway, from which the 1/4 corner common to 27 and 28 bears N. 0°17' E. a distance of 285.9 feet; thence S 0°17' W a distance of 12.3 feet; thence N 26°17' W a distance of 292.6 feet; thence N 0°17' E a distance of 123 feet to Sta. 298/10 a point on the centerline of said highway; thence continuing N 0°17' E a distance of 111.6 feet; thence S 26°17' E a distance of 292.6 feet; thence S 0°17' W a distance of 111.3 feet to point of beginning.

Said R.O.F. contains 7.059 acres all of which isto be acquired.



Sec. 27, T.3 N., R.85 W.

Sec. 34, T.3 N., R.85 W.



LEWIS L. WILSON

Conveys all of the land situated within the Right of Way of W.P.S.S. 388-C. Said R.O.W. is located in the SW $\frac{1}{4}$  of Section 27, T.3 N., R.85 W., of the 6th. P.M. More particularly described as follows:

Beginning at Sta. 327+38.6 a point on the centerline of said highway from which the  $\frac{1}{4}$  corner of Section 27 and 28 bears N 0°17' E a distance of 245.9 feet; thence S 0°17' W a distance of 111.8 feet; thence S 26°17' E a distance of 1061.4 feet; thence S 63°43' W a distance of 150 feet; thence S 46°50' E a distance of 213.6 feet; thence S 26°17' E a distance of 250 feet; thence S 09°35' E a distance of 1 foot; thence N 63°43' E a distance of 150 feet; thence S 17° E a distance of 864.7 feet; thence S 89°18' E a distance of 1 foot to Sta. 354+90.2 a point on the centerline of said highway; thence continuing S 89°18' E a distance of 56.1 feet; thence N 26°17' W a distance of 2877.1 feet; thence S 0°17' W a distance of 111.8 feet to point of beginning.

Said R.O.W. contains 7.909 acres all of which is to be acquired.

A. H. CHIVINGTON

Conveys all the land situated within the Right of Way of W.P.S.S. 388-C. Said R.O.W. is located in the NW $\frac{1}{4}$  of Section 34, T.3 N., R.85 W., of the 6th. P.M. More particularly described as follows:

Beginning at Sta. 354+90.2 a point on the centerline of said highway from which the  $\frac{1}{4}$  corner common to Section 34 and 27 bears S 89°18' E a distance of 1544.5 feet; thence N 85°18' W a distance of 56.1 feet; thence S 26°17' E a distance of 288.1 feet; thence with a curve to the right having a radius of 5981.6 feet for a distance of 1788 feet; thence N 0°41' E a distance of 115 feet to Sta. 355+29 a point on the centerline of said highway; thence continuing N 0°41' E a distance of 1145 feet; thence N 26°17' W a distance of 2111 feet; thence N 89°18' W a distance of 56.1 feet to point of beginning.

Said R.O.W. contains 0.778 acres all of which is to be acquired.

LEWIS L. WILSON

Conveys all the land situated within the Right of Way of W.P.S.S. 388-C. Said R.O.W. is located in the NE $\frac{1}{4}$  of the NW $\frac{1}{4}$  of Section 34, T.3 N., R.85 W., of the 6th. P.M. More particularly described as follows:

Beginning at Sta. 355+29 a point on the centerline of said highway from which the  $\frac{1}{4}$  corner common to Sections 27 and 34 bears N 78°27' E a distance of 1423.6 feet; thence S 0°41' W a distance of 115 feet; thence with a curve to the right having a radius of 5981.6 feet and the semi-tangent bears S 26°17' E for a distance of 9653 feet; thence S 89°19' E for a distance of 518 feet to Sta. 369+20 a point on the centerline of said highway; thence continuing S 89°19' E for a distance of 518 feet; thence with a curve to the left having a radius of 6081.6 feet and the semi-tangent bears N 10°36' W for a distance of 1190.4 feet; thence S 0°41' W a distance of 1145 feet to point of beginning.

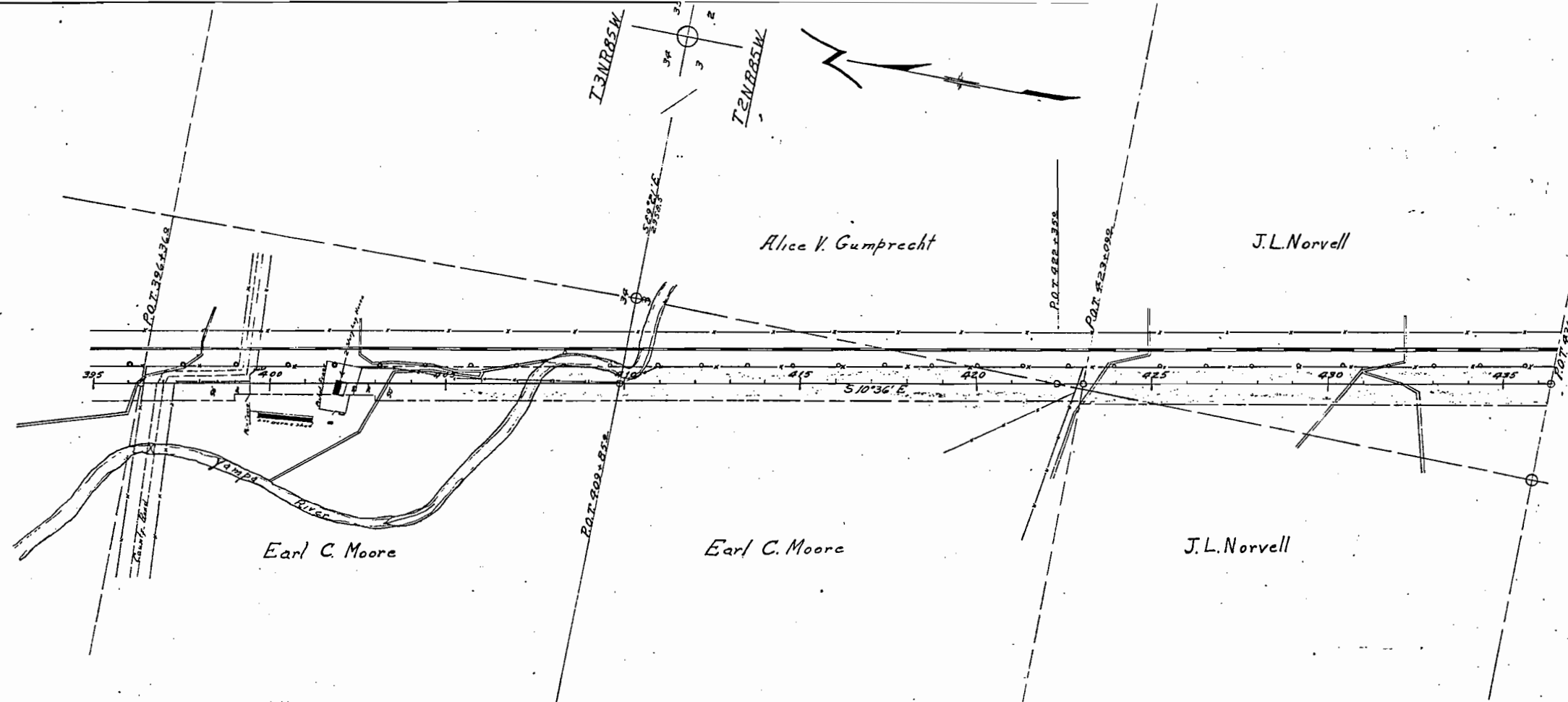
Said R.O.W. contains 2.505 acres all of which is to be acquired.

ALICE V. GUMPRECHT

Conveys all the land situated within the Right of Way of W.P.S.S. 388-C. Said R.O.W. is located in the West  $\frac{1}{4}$  of Section 34, T.3 N., R.85 W., of the 6th. P.M. More particularly described as follows:

Beginning at Sta. 369+36 a point on the centerline of said highway from which the SE corner of Section 34 bears S 83°21' E a distance of 3032.3 feet; thence N 89°21' W a distance of 56.1 feet; thence N 10°36' W a distance of 74.5 feet; thence N 79°24' E a distance of 5 feet; thence N 10°36' W a distance of 1494.6 feet; thence with a curve to the left having a radius of 5981.6 feet for a distance of 4949 feet; thence S 89°19' E a distance of 561 feet; to station 369+20 a point on the centerline of said highway; thence continuing S 89°19' E a distance of 561 feet; thence with a curve to the right having a radius of 6081.6 feet and the semi-tangent bears S 10°36' E for a distance of 476 feet; thence S 10°36' E a distance of 2440.6 feet; thence N 89°21' W a distance of 51 feet to point of beginning.

Said R.O.W. contains 5.318 acres all of which is to be acquired.



# EARL C. MOORE

Conveys all the land situated within the Right of Way of W.P.S. 388-C. Said R.O.W. is located in the SW $\frac{1}{4}$  of Section 34, T 3 N, R 85 W, of the 6th. P.M. and the NW $\frac{1}{4}$  of Section 3, T 2 N, R 85 W, of the 6th. P.M. More particularly described as follows.

Beginning at Sta. 409/85 a point on the centerline of said highway from which the Section corner of 34 and 35, T 3 N, R 85 W and Section 2 and 3, T 2 N, R 85 W, bears S 89°21' E a distance of 2958.5 feet; thence N 89°21' W a distance of 51.0 feet; thence N 10°36' W a distance of 675.1 feet; thence N 79°24' E a distance of 20 feet; thence N 10°36' W a distance of 400 feet; thence S 79°24' W a distance of 20 feet; thence N 10°36' W a distance of 273.9 feet; thence S 89°21' E a distance of 51.0 feet to station 396/36 a point on the centerline of said highway; thence S 10°36' E a distance of 2337.7 feet; thence S 0°39' W a distance of 2563 feet to station 422/35 a point on the centerline of said highway; thence continuing S 0°39' W a distance of 726 feet; thence N 89°21' W a distance of 36.6 feet; thence N 10°36' W a distance of 1324 feet; thence S 89°21' E a distance of 51.0 feet to point of beginning.

Said R.O.W. contains 5.706 acres all of which is to be acquired, of which 0.316 acres are contained in the R.O.W. of the Present Road, leaving 5.390 acres to be acquired.

# ALICE V. GUMPRECHT

Conveys all the land situated within the Right of Way of W.P.S. 388-C. Said R.O.W. is located in the NE $\frac{1}{4}$  of Section 3, T 2 N, R 85 W, of the 6th. P.M. More particularly described as follows.

Beginning at Station 423/09 a point on the centerline of said highway from which the NE Section corner of Section 3 bears N 64°58' E a distance of 2996.2 feet; thence N 89°21' W a distance of 14.4 feet; thence N 0°36' E a distance of 328.9 feet; thence S 10°36' W a distance of 355.5 feet; thence N 89°21' W a distance of 51 feet to point of beginning.

Said R.O.W. contains 0.247 acres all of which is to be acquired.

thence S 89°21' E. for 51.0 feet;

# J. L. NORVELL

Conveys all the land situated within the Right of Way of W.P.S. 388-C. Said R.O.W. is located in the NE $\frac{1}{4}$  and NW $\frac{1}{4}$  of Section 3, T 2 N, R 85 W, of the 6th. P.M. More particularly described as follows.

Beginning at Sta. 423/09 a point on the centerline of said highway, from which the NE corner of Section 3 bears N 64°58' E a distance of 2996.2 feet; thence N 89°21' W a distance of 56.1 feet; thence S 10°36' E a distance of 1326.5 feet; thence S 89°21' E a distance of 56.1 feet to Sta. 436/35 a point on the centerline of said highway; thence continuing S 89°21' E a distance of 51.0 feet; thence N 10°36' W a distance of 1326.5 feet; thence N 89°21' W a distance of 51.0 feet to point of beginning.

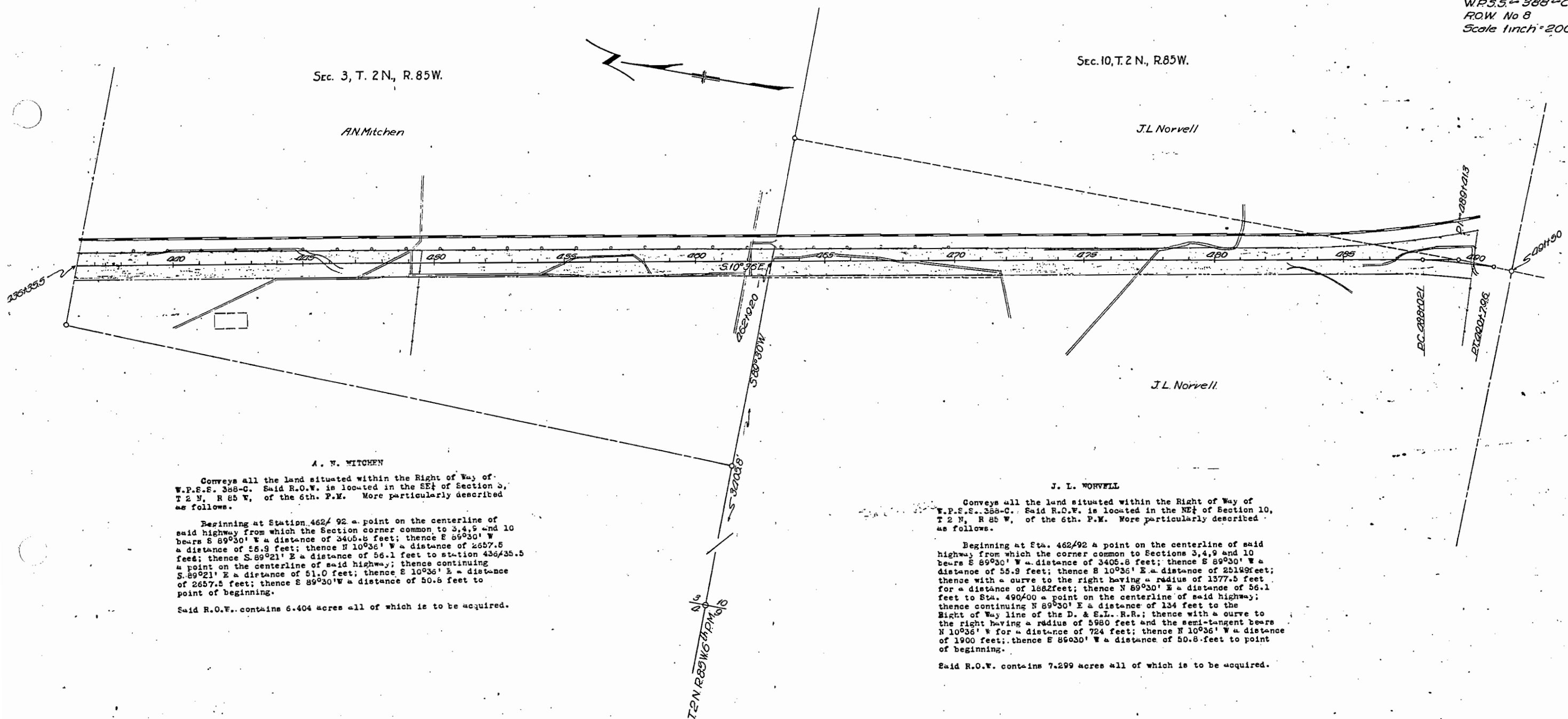
Said R.O.W. contains 3.197 acres all of which is to be acquired.

Sec. 3, T. 2 N., R. 85 W.

Sec. 10, T. 2 N., R. 85 W.

A.N. Mitchem

J.L. Norvell



A. W. MITCHEN

Conveys all the land situated within the Right of Way of W.P.S. 358-C. Said R.O.W. is located in the SE $\frac{1}{4}$  of Section 3, T. 2 N., R. 85 W., of the 6th. P.M. More particularly described as follows.

Beginning at Station 462+92 a point on the centerline of said highway from which the Section corner common to 3, 4, 9 and 10 bears S 89°30' W a distance of 3405.8 feet; thence S 89°30' W a distance of 55.9 feet; thence N 10°36' W a distance of 2657.5 feet; thence S 89°21' E a distance of 56.1 feet to station 435+35.5 a point on the centerline of said highway; thence continuing S 89°21' E a distance of 51.0 feet; thence S 10°36' E a distance of 2657.5 feet; thence S 89°30' W a distance of 50.8 feet to point of beginning.

Said R.O.W. contains 6.404 acres all of which is to be acquired.

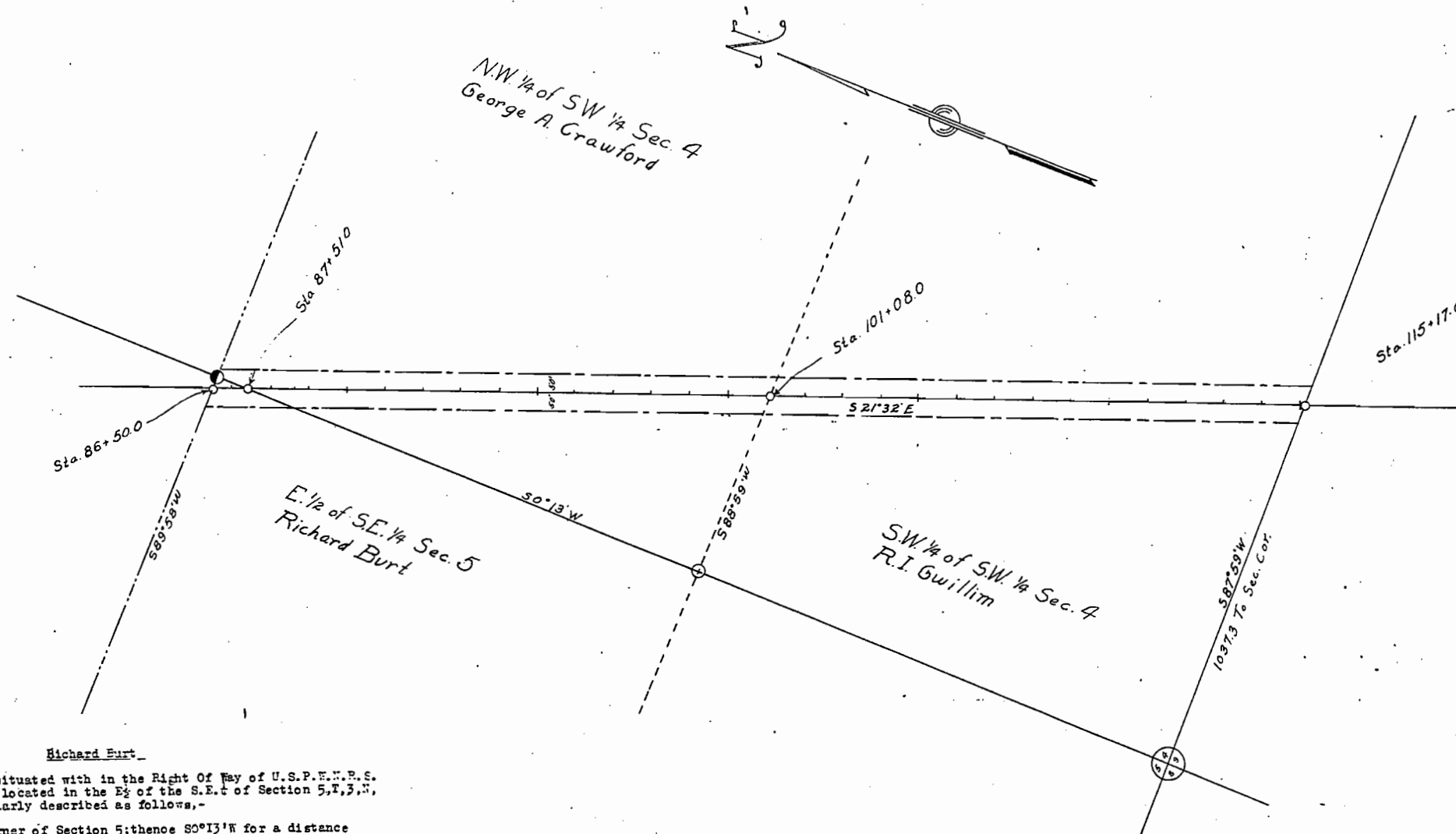
J. L. NORVELL

Conveys all the land situated within the Right of Way of W.P.S. 358-C. Said R.O.W. is located in the NE $\frac{1}{4}$  of Section 10, T. 2 N., R. 85 W., of the 6th. P.M. More particularly described as follows.

Beginning at Sta. 462+92 a point on the centerline of said highway from which the corner common to Sections 3, 4, 9 and 10 bears S 89°30' W a distance of 3405.8 feet; thence S 89°30' W a distance of 55.9 feet; thence S 10°36' E a distance of 2618.9 feet; thence with a curve to the right having a radius of 1377.5 feet for a distance of 188.2 feet; thence N 89°30' E a distance of 56.1 feet to Sta. 490+00 a point on the centerline of said highway; thence continuing N 89°30' E a distance of 134 feet to the Right of Way line of the D. & E.L. R.R.; thence with a curve to the right having a radius of 5980 feet and the semi-tangent bears N 10°36' W for a distance of 724 feet; thence N 10°36' W a distance of 1900 feet; thence S 89°30' W a distance of 50.8 feet to point of beginning.

Said R.O.W. contains 7.299 acres all of which is to be acquired.





Richard Burt

Conveys all of the land situated with in the Right Of Way of U.S.P.W.N.R.S. Project # 388-B, said R.O.W. is located in the E 1/2 of the S.E. 1/4 of Section 5, T.3, N., R. 85, W. 6th. P.M. More particularly described as follows:-

Beginning at the East 1/4 corner of Section 5; thence S0°13'W for a distance of 94.2 feet to station 87+51 a point on the centerline of the said Highway; thence continuing S0°13'W for a distance of 2135.0 feet to the East R.O.W. line of the said Highway; thence along the said R.O.W. line S21°32'W for a distance of 246.0 feet to the East and West line thru the center of Section 5; thence N89°58'E for a distance of 91.7 to the place of beginning.

Said R.O.W. contains 0.238 acres all of which is to be acquired.

George A. Crawford

Conveys all of the land situated with in the Right of Way of U.S.P.W.N.R.S. Project #388-B. Said R.O.W. is located in the N.W. 1/4 of the S.E. 1/4 of Section 4, T.3, N., R. 85, W. of the 6th. P.M. More particularly described as follows:-

Beginning at the East 1/4 corner of Section 5; thence N89°58'E for a distance of 16.3 feet to the East R.O.W. line of the said Highway; thence S21°32'E for a distance of 1457.0 feet to the East and West 1/16th. line thru the S.W. 1/4 of Section 4. thence S87°59'W for a distance of 53.4 feet to station 101+08 a station on the centerline of the said Highway; thence continuing S87°59'W for a distance of 53.4 feet to the West R.O.W. line of the said Highway; thence along said R.O.W. line N21°32'W for a distance of 1213.0 feet to the West Section line of Section 4; thence along the said Section line, N0°13'E, for a distance of 135.0 feet to station 87+51 of said Highway; thence continuing along said Section line for a distance of 94.2 feet to the place of beginning.

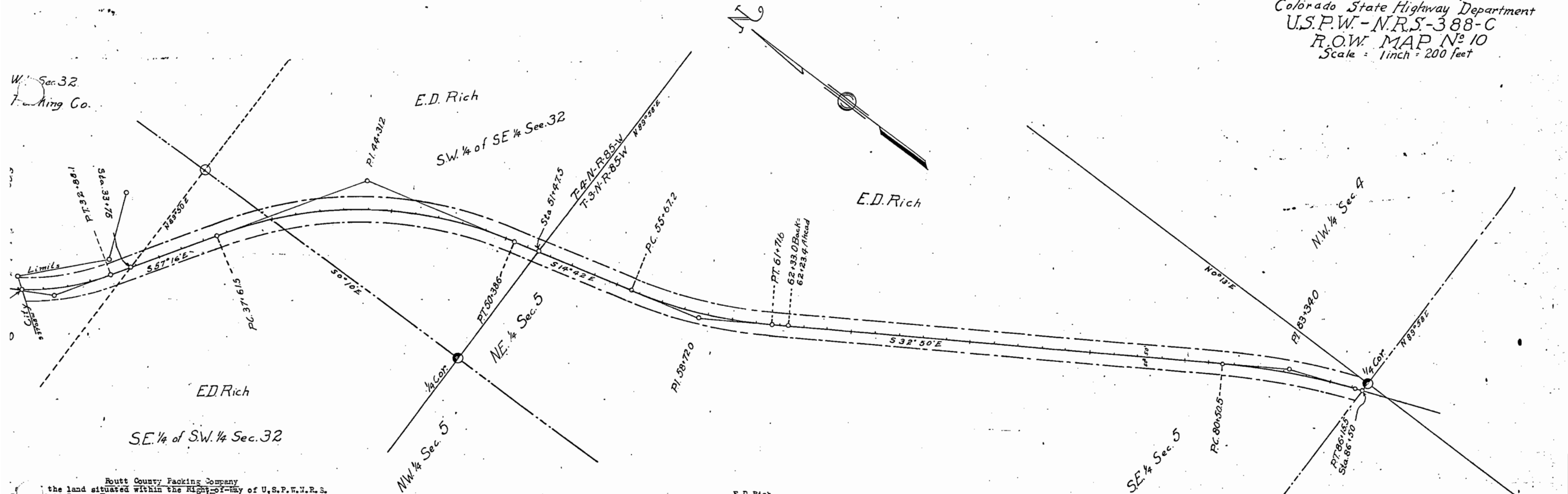
Said R.O.W. contains 3.108 acres.  
Of which 0.842 acres is contained in the old road.  
And 2.266 acres are to be acquired.

R.I. Gwillim

Conveys all of the land situated with in the Right Of Way of U.S.P.W. N.R.S. Project # 388-B. Said R.O.W. is located in the S.W. 1/4 of the S.W. 1/4 of Section 4, T.3, N., R. 85, W. of the 6th. P.M. More particularly described as follows.

Beginning at Station 115-17.0 a point on the centerline of the said Highway, from which the S.W. Corner of Section 4 bears S87°59'W for a distance of 1037.3 feet; thence S87°59'W along the South boundary line of Section 4 for a distance of 53.0 feet to the West R.O.W. line of the said Highway; thence N21°32'W for a distance of 2410.0 feet to the East and West 1/16th. line thru the S.W. 1/4 of Section 4; thence N89°58'E for a distance of 53.4 feet to station 101+08.0 a point on the centerline of the said Highway; thence continuing S87°59'W for a distance of 53.4 feet to the East R.O.W. line of the said Highway; thence S21°32'E for a distance of 1408.0 feet to the South boundary line of Section 4; thence S87°59'W for a distance of 53.0 feet to the place of beginning.

Said R.O.W. contains 3.234 acres  
Of which 1.012 acres are contained in the old road.  
And 2.222 acres are to be acquired.



Routt County Packing Company

the land situated within the Right-of-Way of U.S.P.W.&N.R.S. Said R.O.W. is located in the N.E.1/4 of the S.W.1/4 of section 32, of the 6th P.M. More particularly described as follows, -

ing at station 33+75 a point on the centerline of said Highway from S.E. Corner of Section 32 bears S.57°19'2" a distance of 3431.0 feet

35°50'E. along the East and West 1/16th. line thru the S.W.1/4 of

for a distance of 92.0 feet to the East R.O.W line of said High-

N.57°16'W. for a distance of 164.2 feet; thence on a curve to the right

us of 93.0 feet for a distance of 365.8 feet to the East City Limits

n of Oak Creek; thence S37°08'W along the East City Limits of the

k Creek for a distance of 52.6 feet to station 25+15.0 a point on

line of said Highway; thence continuing S37°08'W. for a distance of

to the West R.O.W. line of the said Highway; thence on a curve to the left

us of 1005.0 feet for a distance of 372.4 feet to the East and West

thru the S.W.1/4 of Section 32; thence N89°50'E. for a distance of 92.0 feet

ce of beginning.

i. contains 1.047 acres. All of which are to be acquired.

Conveys all of the land situated within the Right-of-way Of U.S. P. W. N.R.S. Project #388-B. Said Right Of Way is located in the South  $\frac{1}{2}$  of Section 32. T,4,N- R,85,W of the 6th. P.M. More particularly described as follows,-

Beginning at station 514+7.5 a point on the centerline of said Highway, from which the S.E. Corner of Section 32, T. 89° 55' E for a distance of 2079.6 ft; thence along the south boundary line of Section 32, T. 89° 55' E for a distance of 517.7 feet to the East R.O.W. line of said Highway; Thence N 14° 42' W for a distance of 122.0 feet; thence on a curve to the left with a radius of 1709.0 feet for a distance of 1914.2 feet; thence N 7° 16' W for a distance of 309.2 feet to the E. and K. T. 16th. line thru the S.W. 1/4 of Section 32; Thence S 89° 55' E for a distance of 92.1 feet to the centerline of said Highway; thence continue N 7° 16' E for a distance of 92.0 feet to the East R.O.W. line of the said Highway; thence S 7° 16' E for a distance of 463.8 feet to the centerline of said Highway with a radius of 1639.0 feet for a distance of 1240.0 feet; thence S 14° 42' E for a distance of 55.8 feet to the south boundary line of section 32; thence N 6° 55' E for a distance of 51.7 feet to the point of beginning.

Said R.O.W. contains 4.069 Acres, all of which are to be acquired.

Conveys all of the land situated with in the Right Of way of U.S.P.F.W.R.S. Project 385.-B. Said R.O.W. is located in the N  $\frac{1}{2}$  of Section 5. T. 3.N.,-R,65,W of the 6th. P.M. More particularly described as follows,-

Beginning at Station 57+7.5 a point on the centerline of the said Highway, thence the W<sup>2</sup> corner of Section 5 bears S 29° 51' E for a distance of 202.5 feet; thence along the North boundary line of Section 5, S 29° 51' E for a distance of 7.5 feet to the East R.O.W. line of the said Highway; thence S 71° 01' E for a distance of 420.5 feet; thence on a curve to the left with a radius of 1550.0 feet; thence S 32° 50' E for a distance of 1077.7 feet; thence on a curve to the right with a radius of 2219.0 feet for a change of 57.7 degrees; thence S 89° 13' E for a distance of 73.0 feet to the East corner of Section 5; thence S 89° 55' E for a distance of 36.5 feet to station 60+0.0 a point on the centerline of the said Highway; thence continuing S 89° 55' E for a distance of 531.5 feet to the West R.O.W. line of the said Highway; thence S 21° 02' E for a distance of 16.0 feet; thence on a curve to the left with a 2615.0 feet radius for a distance of 1037.7 feet; thence on a curve to the right with a radius of 1060.0 feet for a distance of 613.8 feet; thence N 49° 22' E for a distance of 136.1 feet to the North boundary line of Section 5; thence N 69° 55' E along the North boundary line of Section 5 for a distance of 50.5 feet to the place of beginning.

~~Said R.O. 7, contains 8.032 acres,  
Of which 1.462 acres are contained in the city.  
And 6.570 acres are to be acquired.~~

Beginning at station 51 + 47.5 a point on the center line of the said Highway from which the N.E. corner of Section 5 bears N 99°58' E a distance of 2870.0 feet; thence S 1°13' E along the North boundary line of section 5, N 89°58' E for a distance of 51.7 feet to the East boundary line of said Highway; thence S 14°42' E for a distance of 406.6 feet; thence on a curve to the left with a radius of 1860.0 feet for a distance of 588.6 feet; thence S 32°50' E for a distance of 1688.5 feet; thence on a curve to the right with a radius of 2910.0 feet for a distance of 574.9 feet; thence S 00°13' W for a distance of 40.7 feet to the east corner of Section 5; thence S 89°58' W for a distance of 37.4 feet to station 80 + 40 of said Highway; thence continuing S 99°58' W for a distance of 53.7 feet to the West R.O.W. line of said Highway; thence N 21°32' W for a distance of 148.8 feet; thence on a curve to the left with a radius of 2315.0 feet for a distance of 555.1 feet; thence N 32°50' W for a distance of 188.5 feet; thence on a curve to the right with a radius of 1960.0 feet for a distance of 620.2 feet; thence N 14°42' W for a distance of 432.8 feet to the North boundary line of section 5; thence N 99°58' E along the North boundary line of Section 5 for a distance of 51.7 feet to the place of beginning.

Said Right of Way contains 8.055 acres,  
Of which 1.462 acres are contained in the old road.  
And 6.593 acres are to be acquired.